

Chess Puzzles

3701-3718

Mate in Two

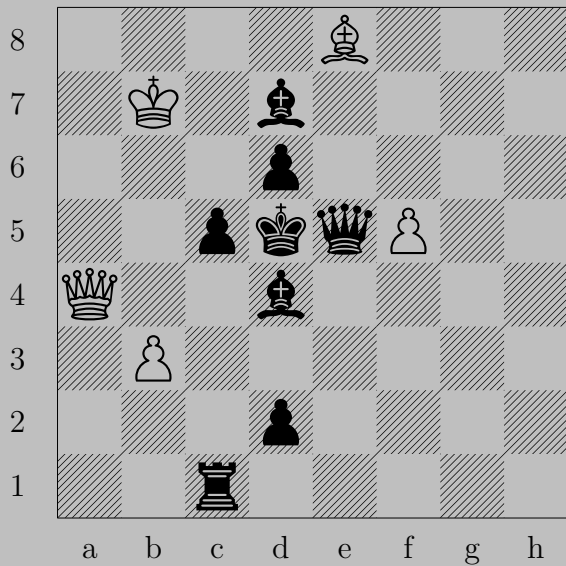
White to Move

László Polgár

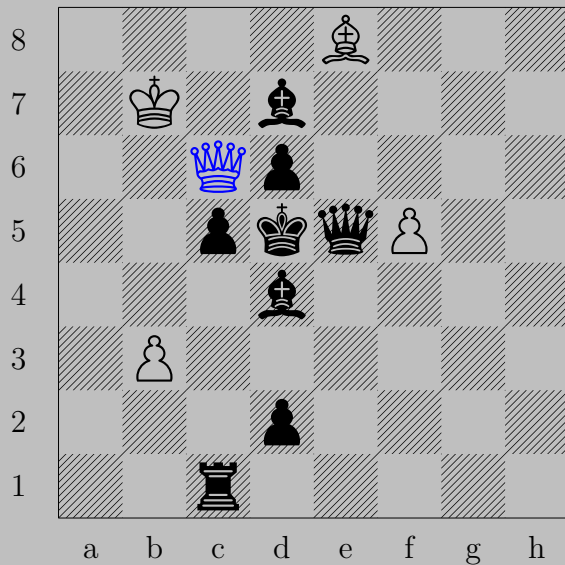
Links

[3701](#) [3702](#) [3703](#) [3704](#) [3705](#) [3706](#) [3707](#) [3708](#) [3709](#) [3710](#)
[3711](#) [3712](#) [3713](#) [3714](#) [3715](#) [3716](#) [3717](#) [3718](#)

3701

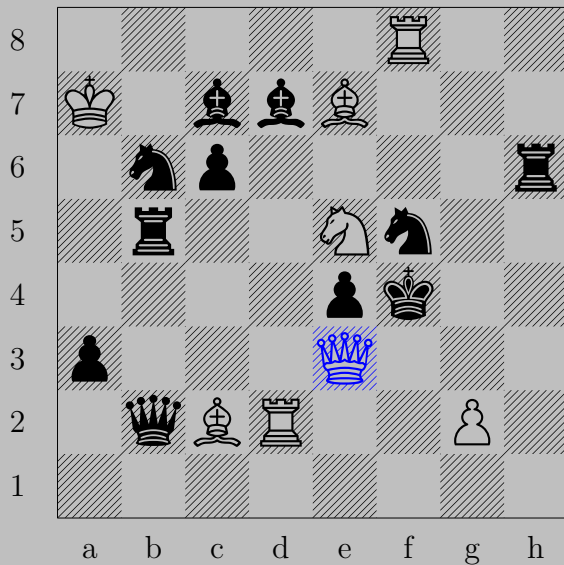


3701



♙c6+, ♜xc6
♜xc6

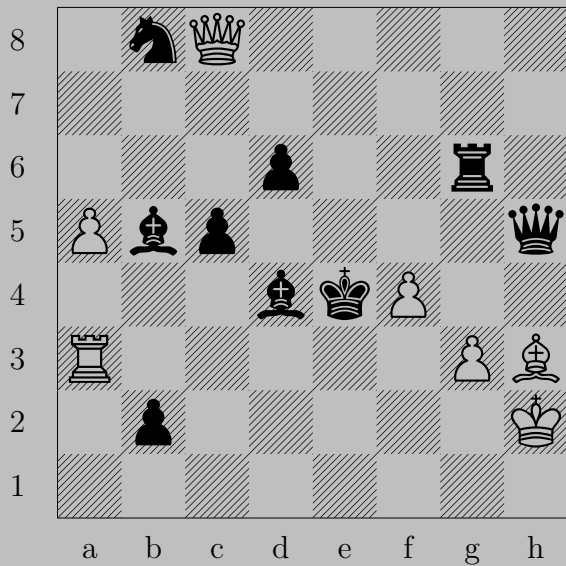
3702



♔e3+

If ♕xe3 , ♘g5 . If ♔xe5 , ♕xe4 .

3703

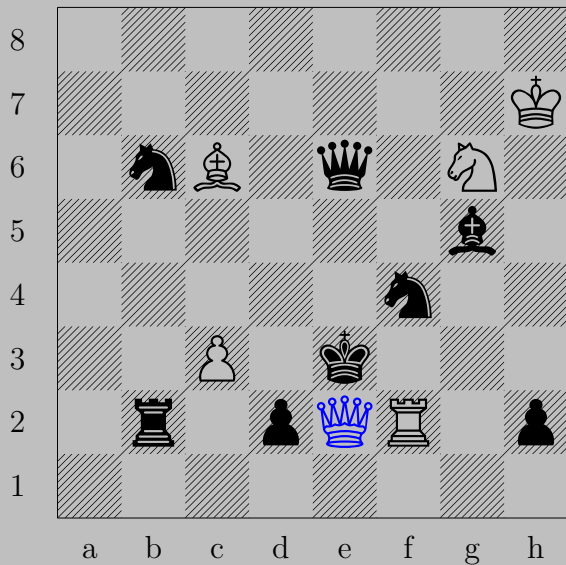


3703



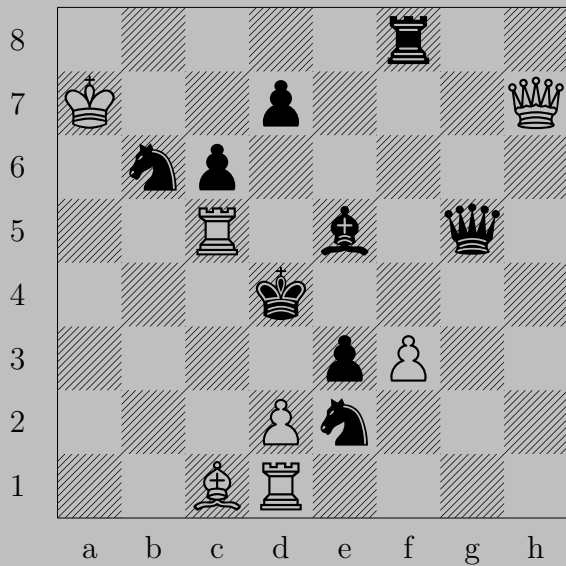
♙f5+, ♚×f5
♜g4

3704

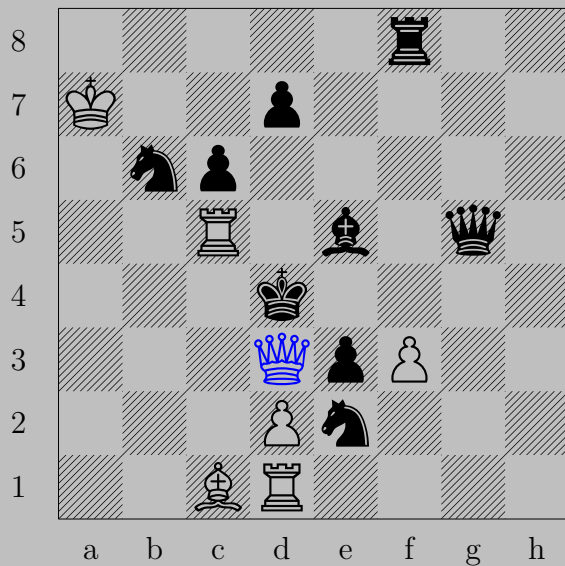


$\text{♔} \times e2+, \text{♞} \times e2$
 $\text{♖} f3$

3705



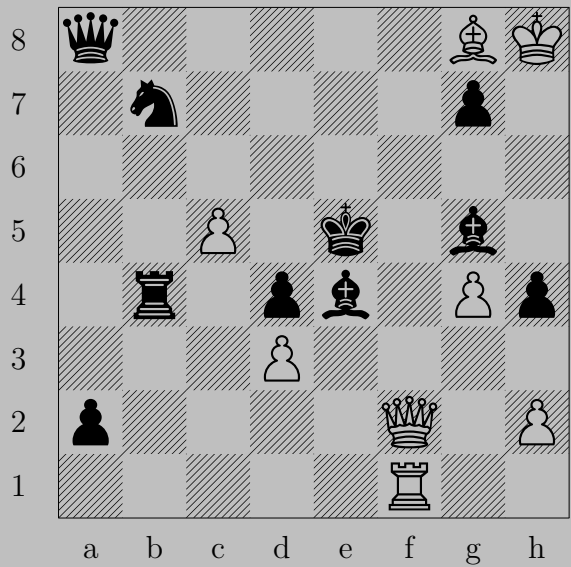
3705



♔d3+

If ♙xd3 , ♜xe3 . If ♙xc5 , ♞a3 .

3706

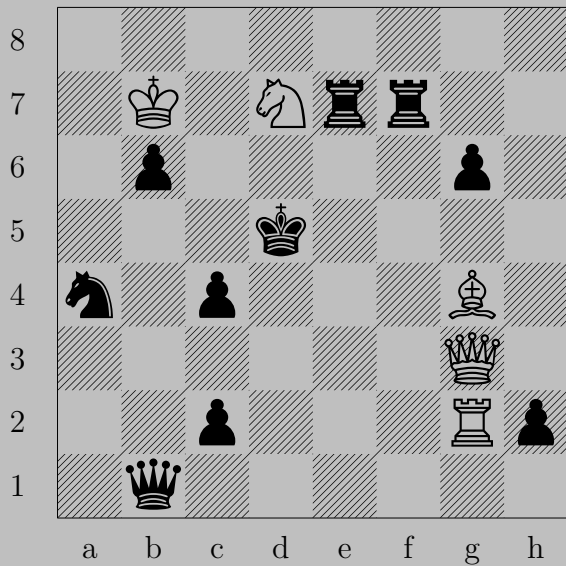


3706

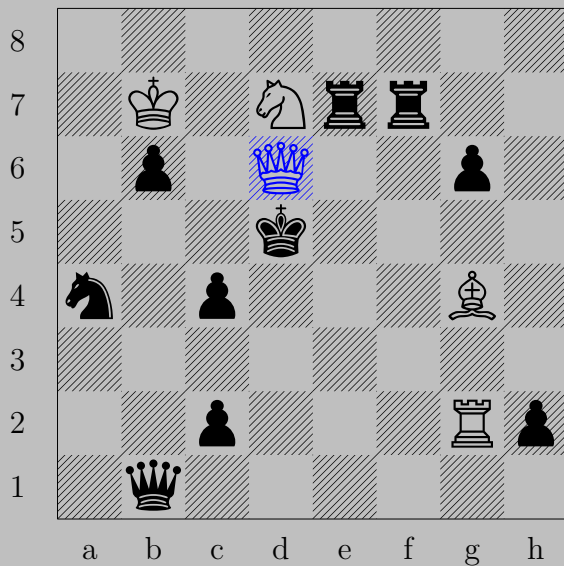


♙f5+, ♖xg5
♖xg5

3707



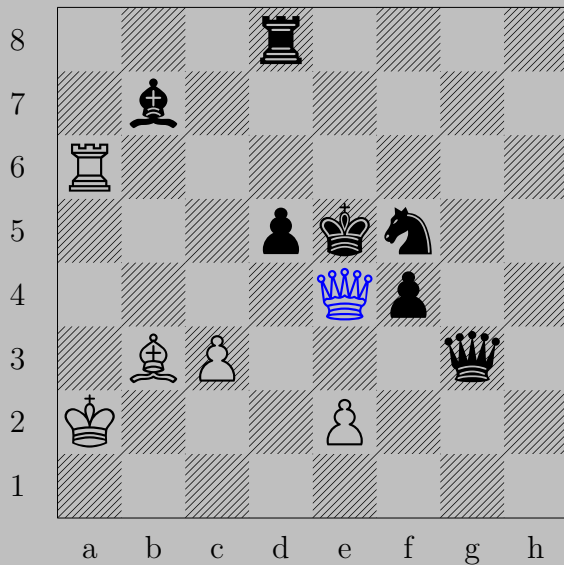
3707



♚d6+

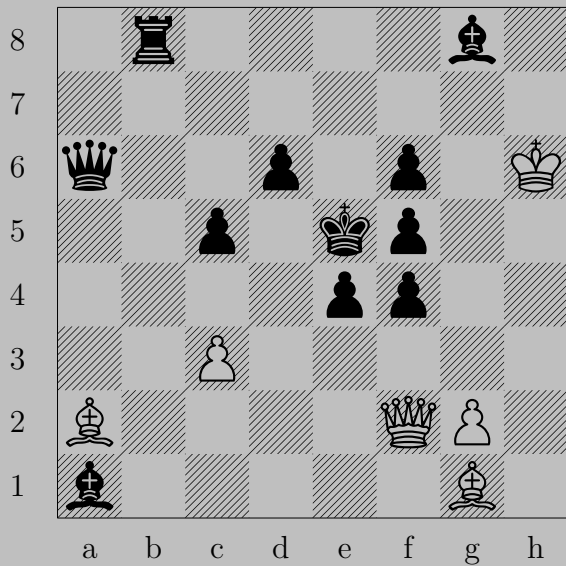
If ♟×d6, ♖d2. If ♟e4, ♖e2.

3708



♔e4+ , ♗xe4 or ♕xe4
 ♖e6

3709



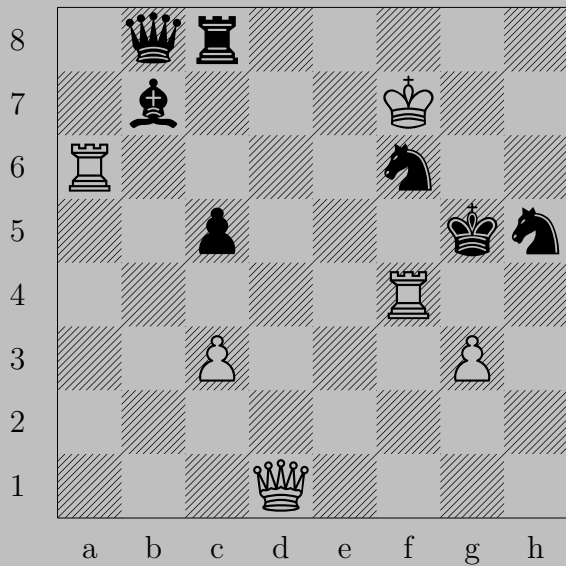
3709



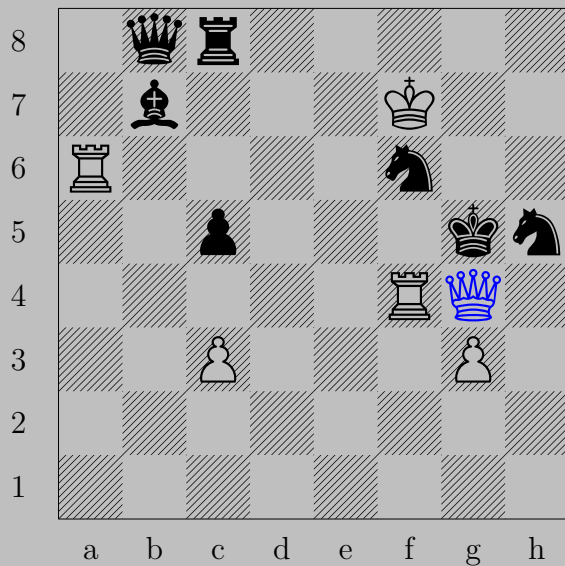
♙d4+, ♖×d4

♗×d4

3710



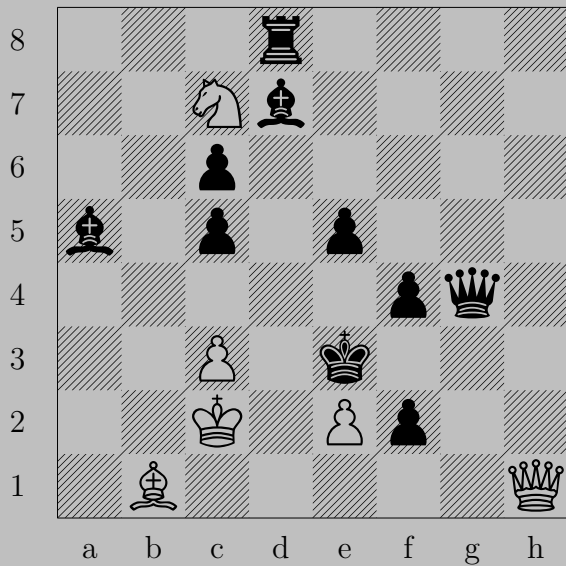
3710



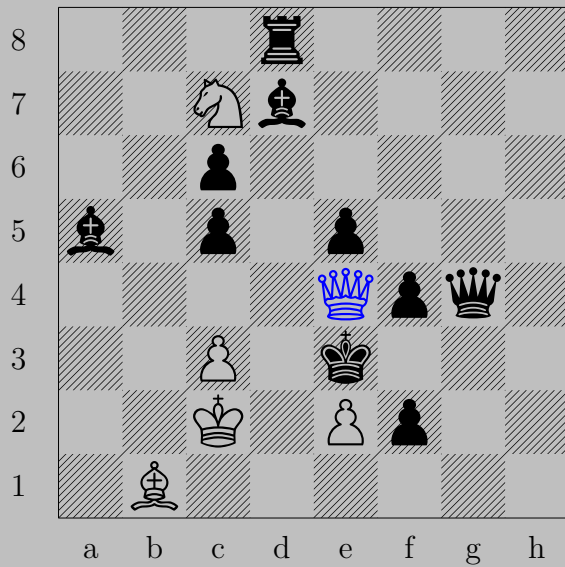
♔g4+

If ♘xg4, ♖g6. If ♔h6, ♕g6.

3711

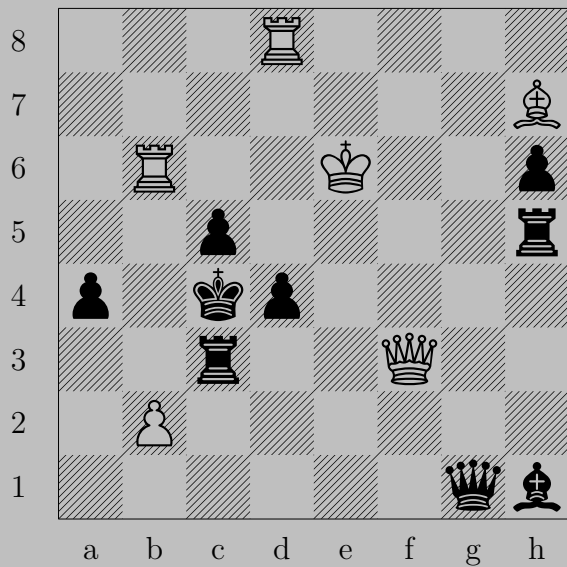


3711



♙e4+, ♚xe4
♙d2

3712



3712



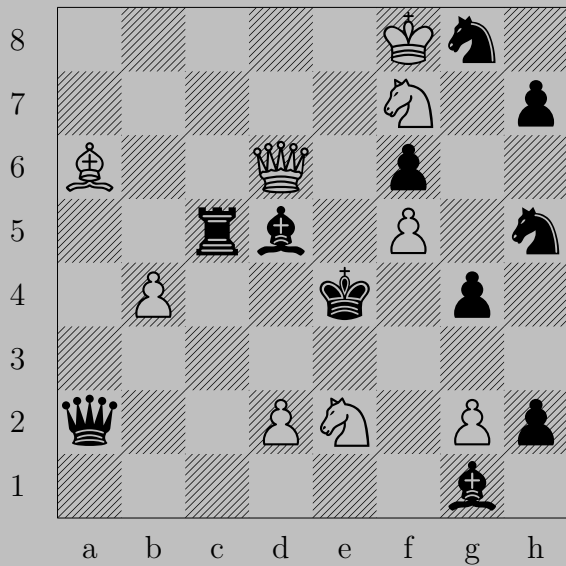
♙xc3+, ♖xc3
♗d3

3713

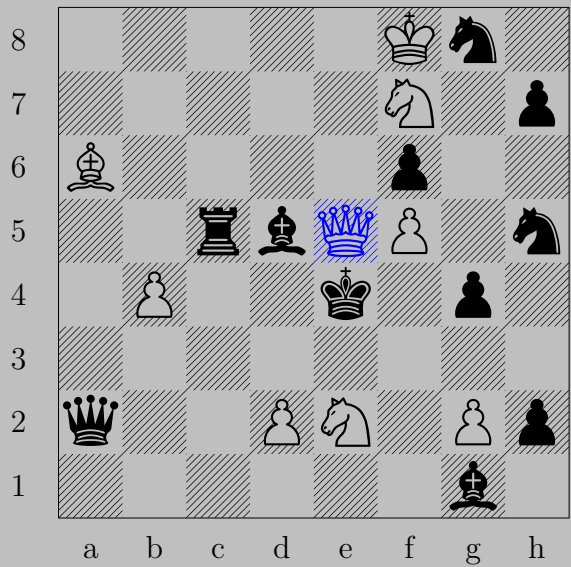


♙d4+, ♜x d4
♜x d4

3714

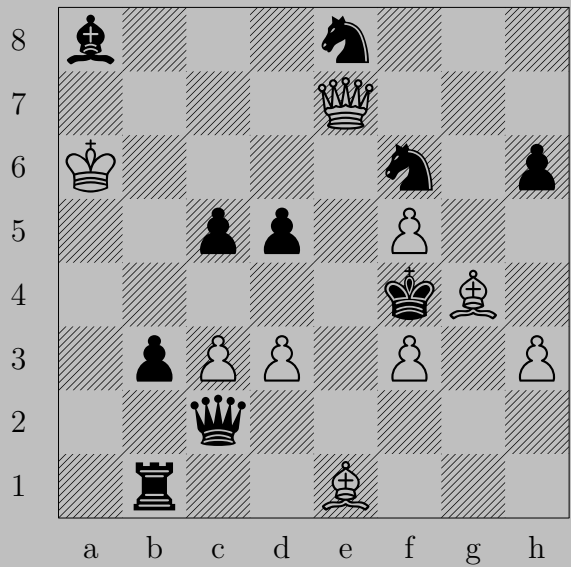


3714

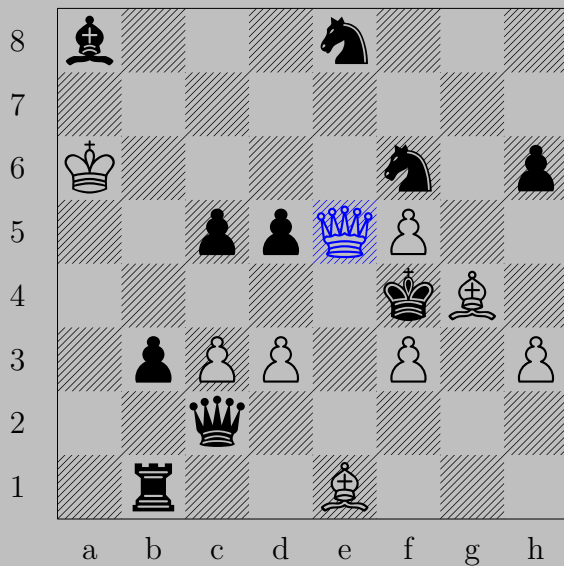


♔e5+, ♕xe5
♞d6

3715



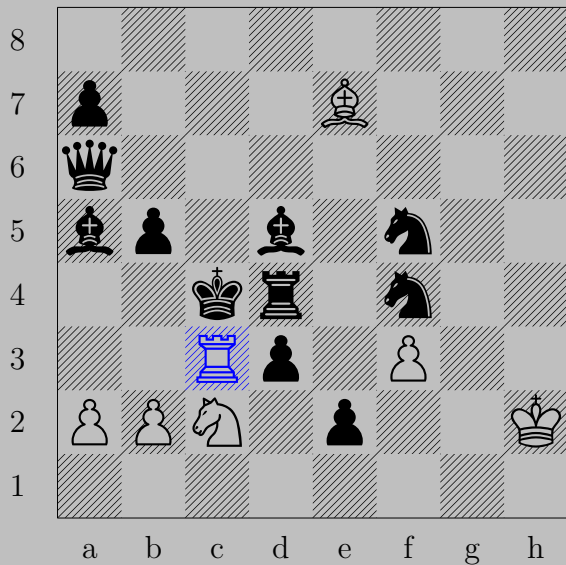
3715



♙e5 +

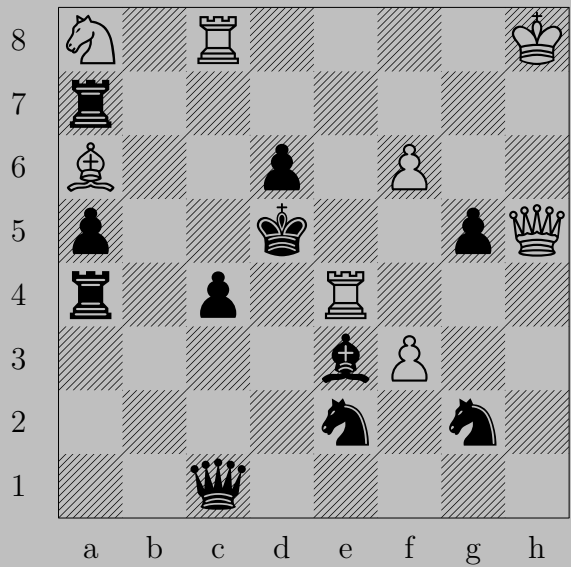
If ♖xe5, ♗g3. If ♖g5, ♙e3.

3716

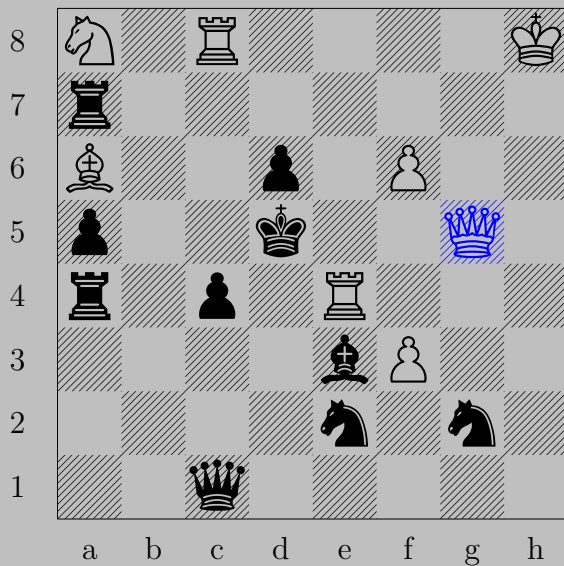


♞c3+, ♞xc3
♙b3

3717

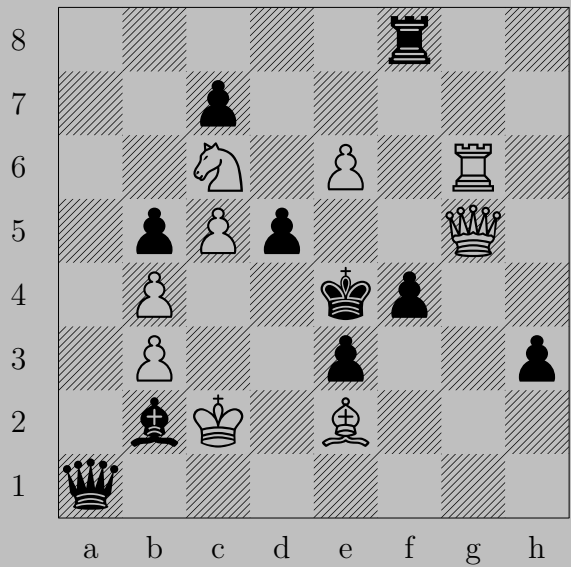


3717

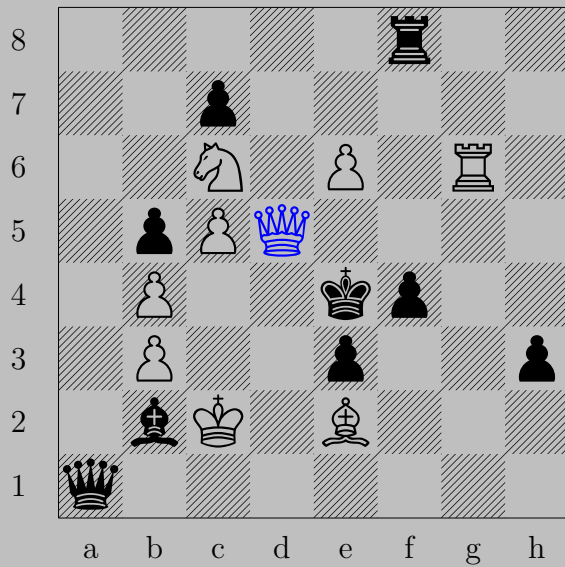


♔×g5+, ♕×g5
♞b6.

3718



3718



♙×d5+, ♚×d5
♘f3