

# Chess Puzzles

3201-3300

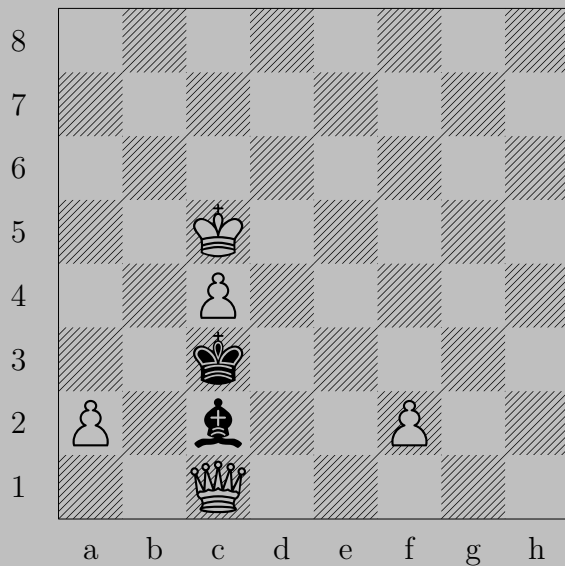
Mate in Two  
White to Move

László Polgár

## Links

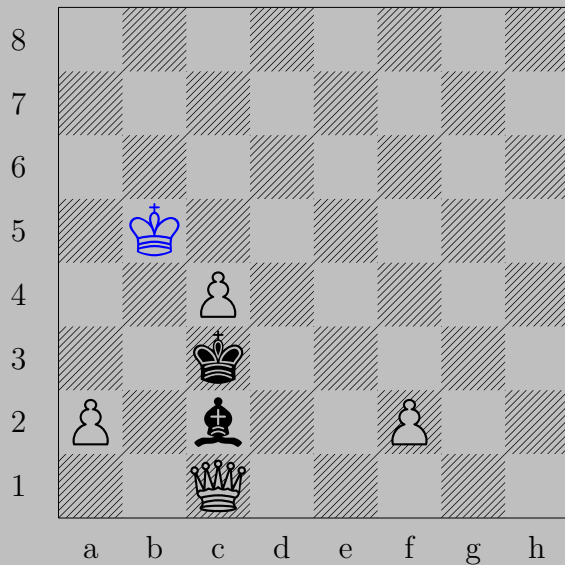
<a href="#">3201</a>	<a href="#">3202</a>	<a href="#">3203</a>	<a href="#">3204</a>	<a href="#">3205</a>	<a href="#">3206</a>	<a href="#">3207</a>	<a href="#">3208</a>	<a href="#">3209</a>	<a href="#">3210</a>
<a href="#">3211</a>	<a href="#">3212</a>	<a href="#">3213</a>	<a href="#">3214</a>	<a href="#">3215</a>	<a href="#">3216</a>	<a href="#">3217</a>	<a href="#">3218</a>	<a href="#">3219</a>	<a href="#">3220</a>
<a href="#">3221</a>	<a href="#">3222</a>	<a href="#">3223</a>	<a href="#">3224</a>	<a href="#">3225</a>	<a href="#">3226</a>	<a href="#">3227</a>	<a href="#">3228</a>	<a href="#">3229</a>	<a href="#">3230</a>
<a href="#">3231</a>	<a href="#">3232</a>	<a href="#">3233</a>	<a href="#">3234</a>	<a href="#">3235</a>	<a href="#">3236</a>	<a href="#">3237</a>	<a href="#">3238</a>	<a href="#">3239</a>	<a href="#">3240</a>
<a href="#">3241</a>	<a href="#">3242</a>	<a href="#">3243</a>	<a href="#">3244</a>	<a href="#">3245</a>	<a href="#">3246</a>	<a href="#">3247</a>	<a href="#">3248</a>	<a href="#">3249</a>	<a href="#">3250</a>
<a href="#">3251</a>	<a href="#">3252</a>	<a href="#">3253</a>	<a href="#">3254</a>	<a href="#">3255</a>	<a href="#">3256</a>	<a href="#">3257</a>	<a href="#">3258</a>	<a href="#">3259</a>	<a href="#">3260</a>
<a href="#">3261</a>	<a href="#">3262</a>	<a href="#">3263</a>	<a href="#">3264</a>	<a href="#">3265</a>	<a href="#">3266</a>	<a href="#">3267</a>	<a href="#">3268</a>	<a href="#">3269</a>	<a href="#">3270</a>
<a href="#">3271</a>	<a href="#">3272</a>	<a href="#">3273</a>	<a href="#">3274</a>	<a href="#">3275</a>	<a href="#">3276</a>	<a href="#">3277</a>	<a href="#">3278</a>	<a href="#">3279</a>	<a href="#">3280</a>
<a href="#">3281</a>	<a href="#">3282</a>	<a href="#">3283</a>	<a href="#">3284</a>	<a href="#">3285</a>	<a href="#">3286</a>	<a href="#">3287</a>	<a href="#">3288</a>	<a href="#">3289</a>	<a href="#">3290</a>
<a href="#">3291</a>	<a href="#">3292</a>	<a href="#">3293</a>	<a href="#">3294</a>	<a href="#">3295</a>	<a href="#">3296</a>	<a href="#">3297</a>	<a href="#">3298</a>	<a href="#">3299</a>	<a href="#">3300</a>

3201



E. Szentgyörgyi, 1933

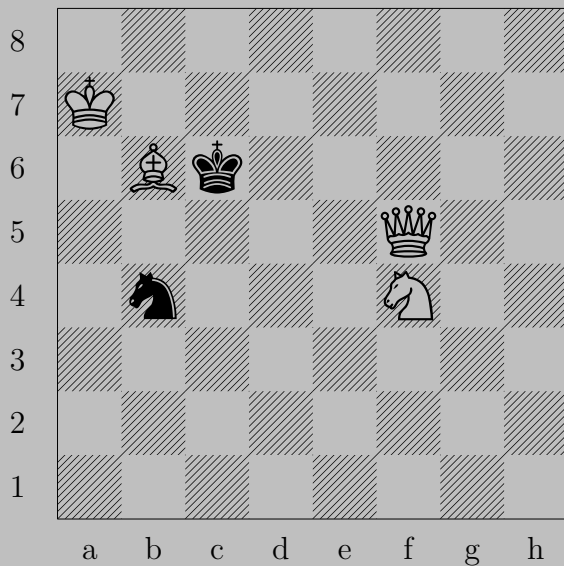
3201



♔b5, ♖d3 or ♖d4

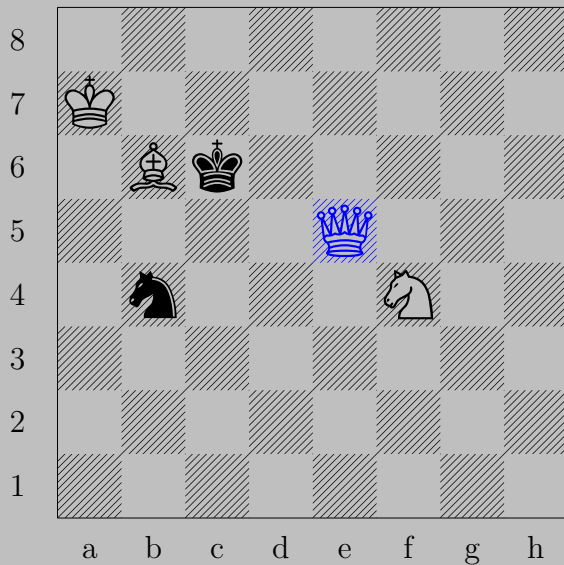
♚e3

3202



E. Szentgyörgyi, 1933

3202



♙e5

If ♔d7, ♙e6.

If ♞d5, ♙x d5. Otherwise, ♙d5.

3203



E. Szentgyörgyi, 1933

3203



$\text{♞c7}$ ,  $\text{♔a3}$  or  $\text{♔a5}$  or  $\text{♗d5}$   
 $\text{♖a6}$



3204



E. Szentgyörgyi, 1933

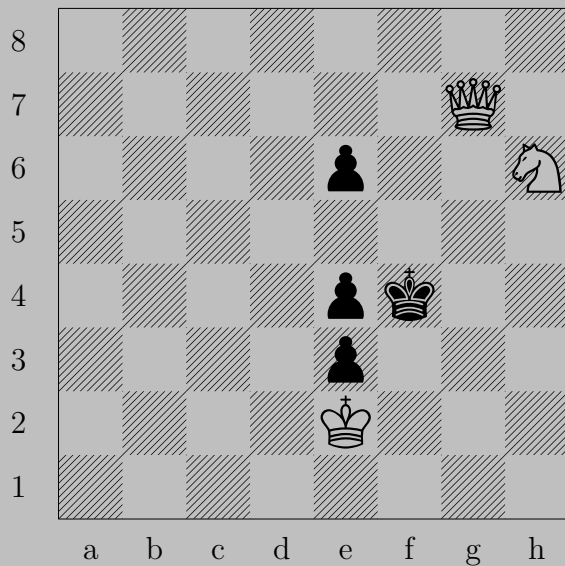
3204



♔d3

If ♔b4, ♔b5. If ♖a3, ♔c4.

3205



E. Szentgyörgyi, 1933

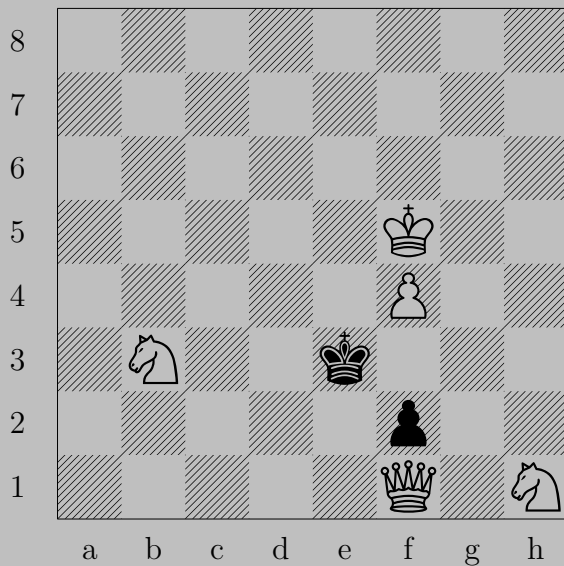
3205



♞f7, ♠e5 or ♔f5

♚g5

3206



E. Szentgyörgyi, 1933

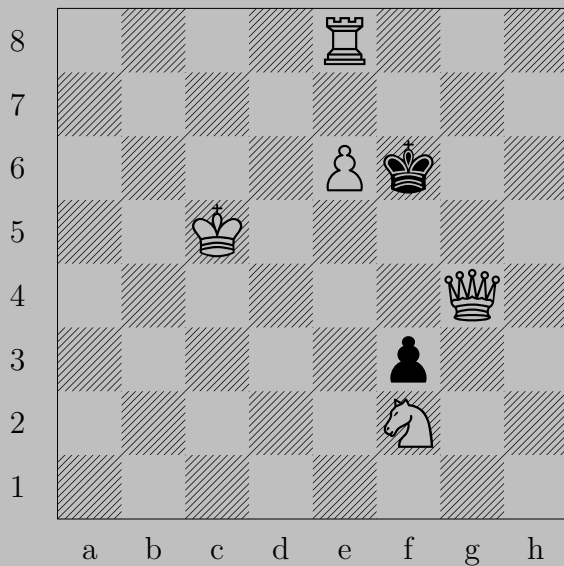
3206



♔c4, ♔f3 or ♘f1(anything)

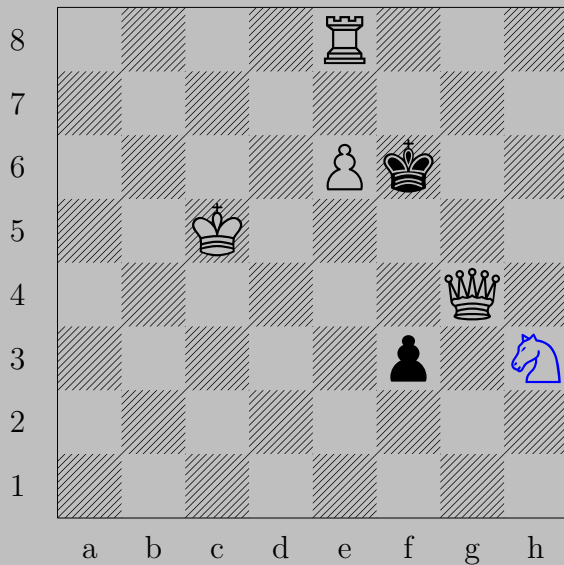
♔e4

3207



E. Szentgyörgyi, 1933

3207

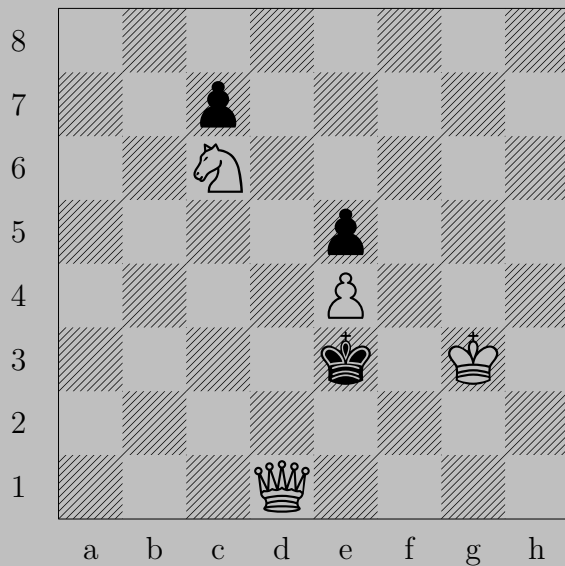


$\text{♞h3}$

If  $\text{♜f2}$ ,  $\text{♚g5}$ . If  $\text{♞e5}$ ,  $\text{♚f4}$ .

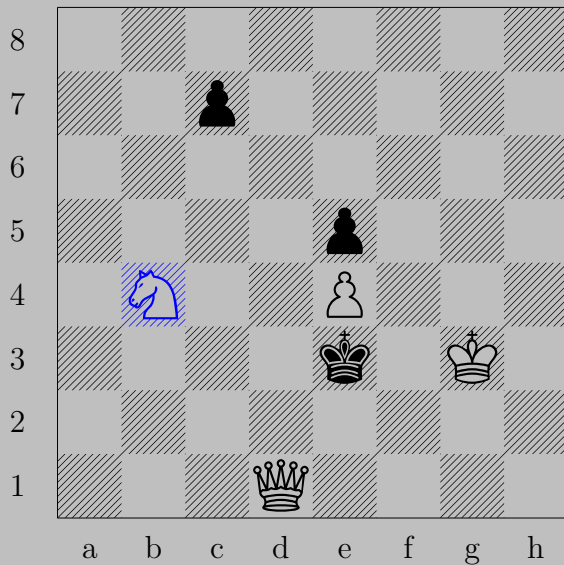





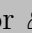
3208



E. Szentgyörgyi, 1933

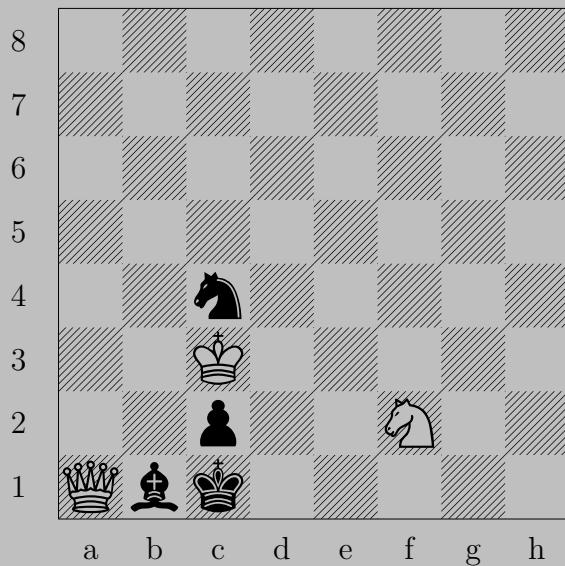
3208



b4, xe4 or c6 or c5

d3

3209



E. Szentgyörgyi, 1933

3209

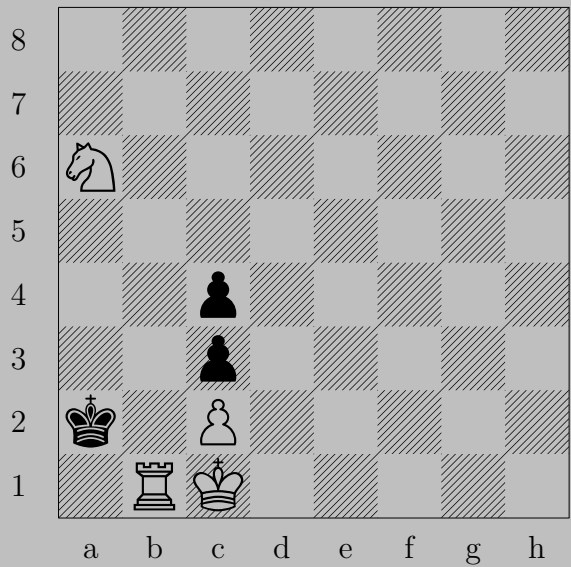


♔a4

If ♘b2, ♔f4. If ♕a2, ♔xc2.

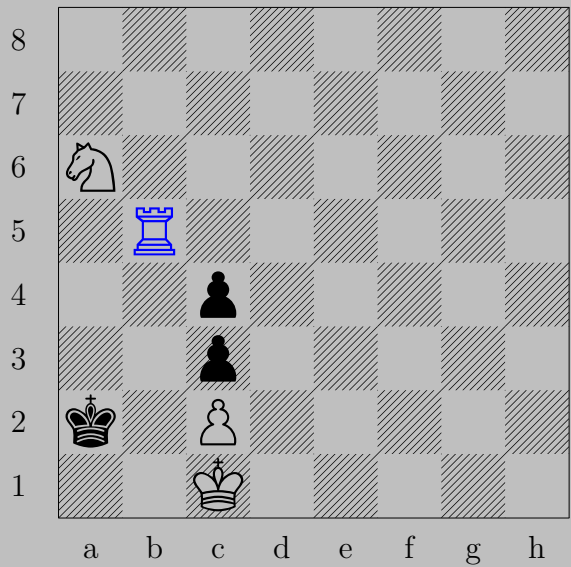
If ♘a3, ♔xa3. Otherwise, ♔a3.

3210



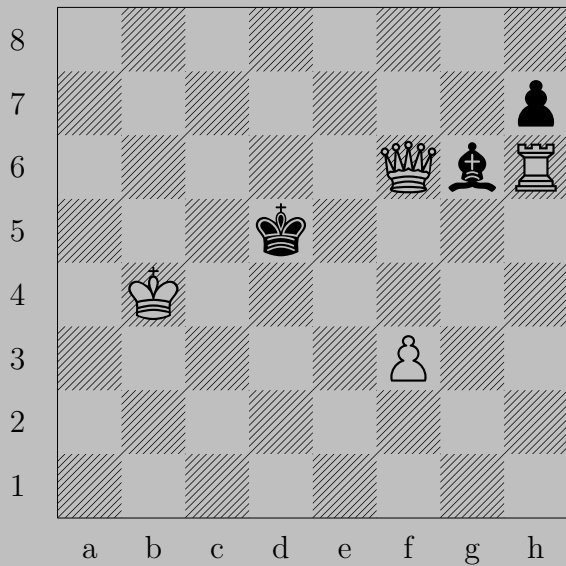
E. Szentgyörgyi, 1933

3210



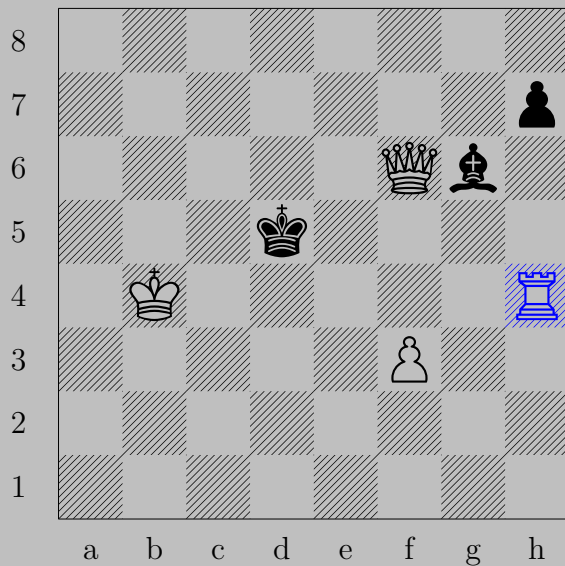
$\text{♖b5}$ ,  $\text{♔a1}$  or  $\text{♔a3}$   
 $\text{♖a5}$

3211



E. Szentgyörgyi, 1933

3211



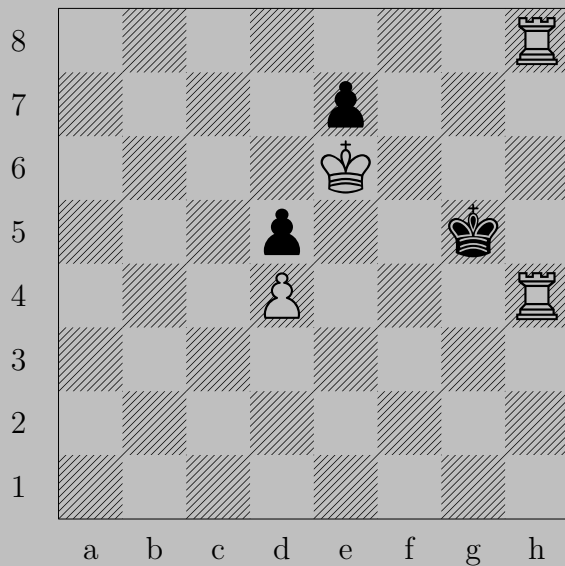
$\text{R}h4$

If  $\text{Q}e4$ ,  $\text{P}xe4$ .

Otherwise,  $\text{R}d4$ .



3212



E. Szentgyörgyi, 1933

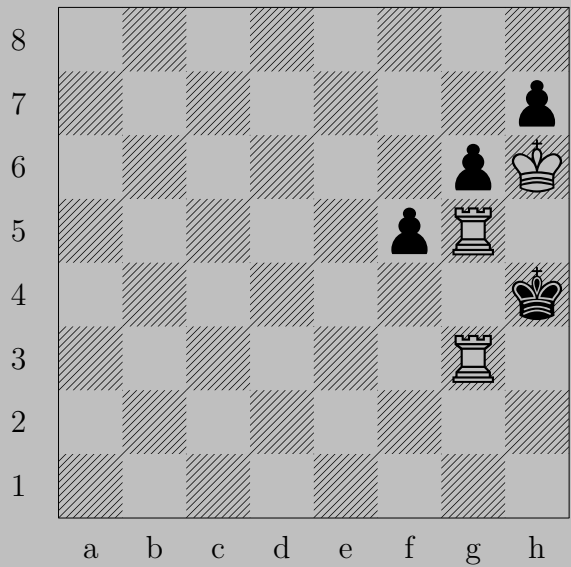
3212



♔f7, ♕f5 or ♖e6 or ♖e5

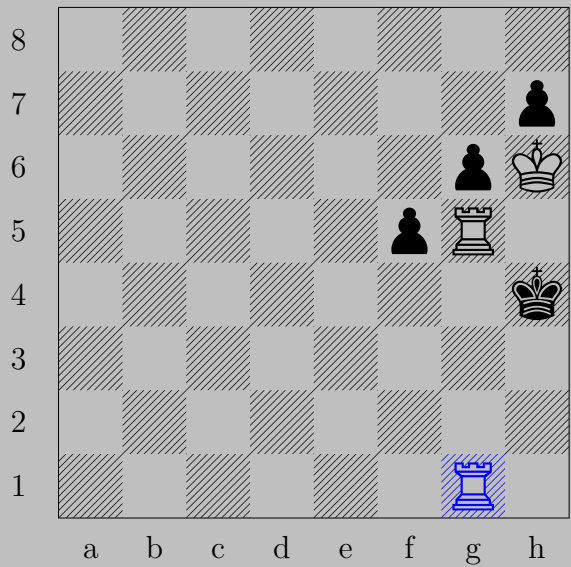
♖(h8) h5

3213



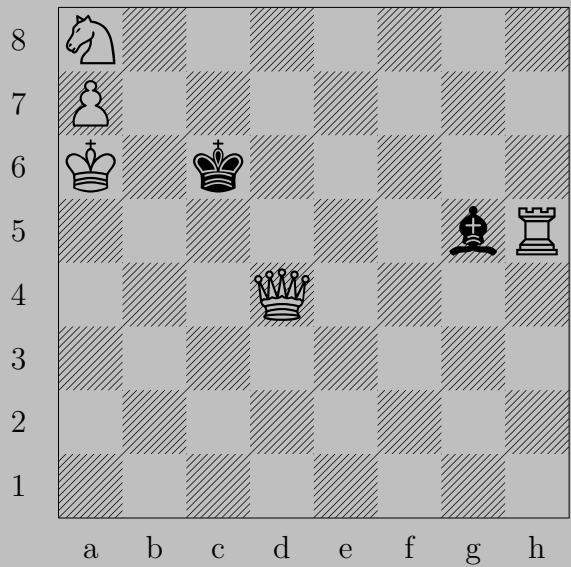
E. Szentgyörgyi, 1933

3213



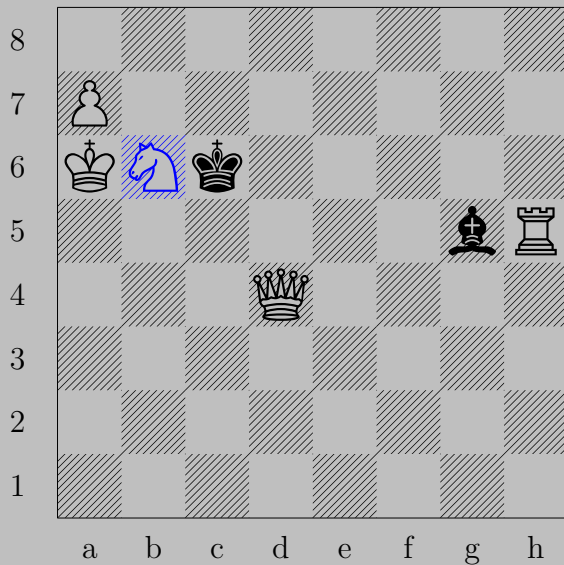
♖g1, ♘f4 or ♔h3  
♖h1

3214



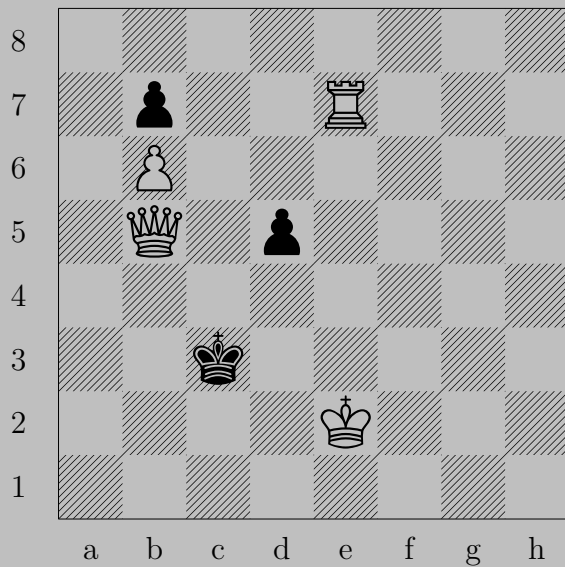
E. Szentgyörgyi, 1933

3214



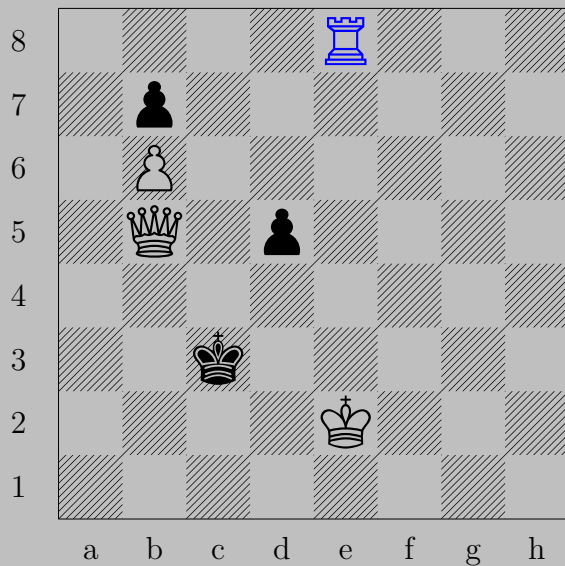
b6, c7 or d8-h4 or c1-h6  
d7

3215



E. Szentgyörgyi, 1933

3215

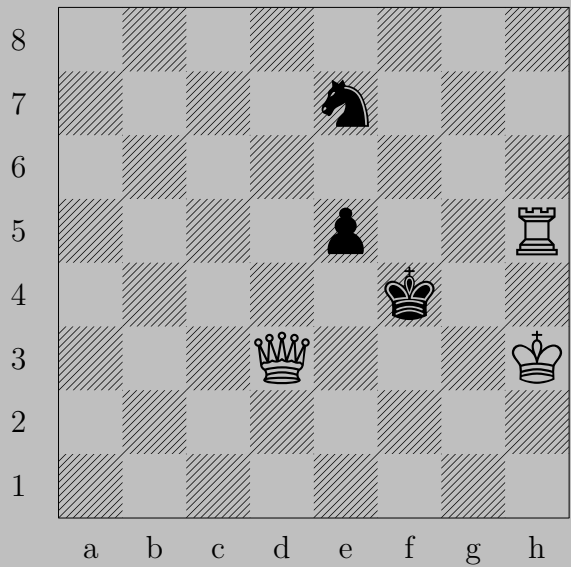


$\text{R}e8$

If  $\text{Q}c2$  or  $\text{B}d4$ ,  $\text{R}c8$ . If  $\text{Q}d4$ ,  $\text{Q}b4$ .



3216



E. Szentgyörgyi, 1933

3216

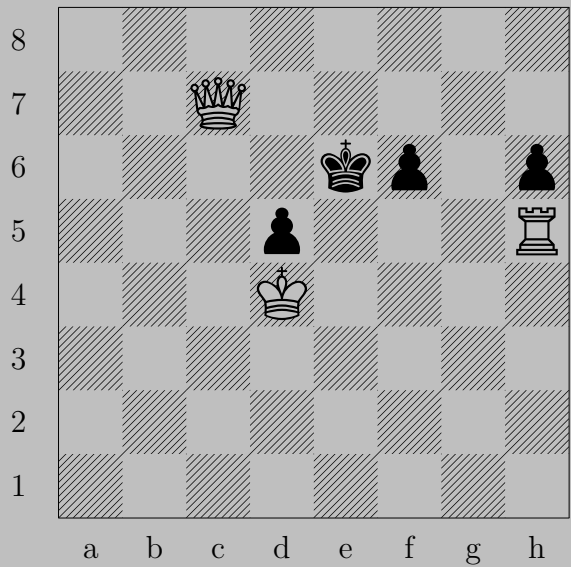


♔g2

If ♘e4, ♕g3.

Otherwise, ♕f3.

3217



E. Szentgyörgyi, 1933

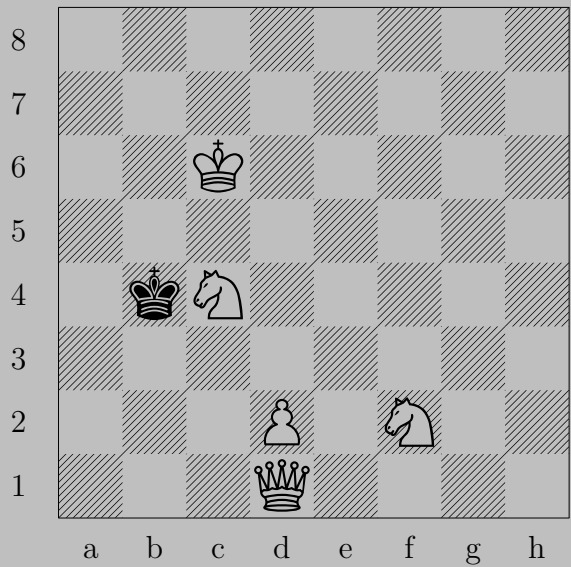
3217



♖×d5

If ♘f5, ♖d6. If ♘h5, ♔d7.

3218



E. Szentgyörgyi, 1933

3218



♙f3

If ♔xc4, ♙c3. If ♔a4, ♙a3.

3219



E. Szentgyörgyi, 1933

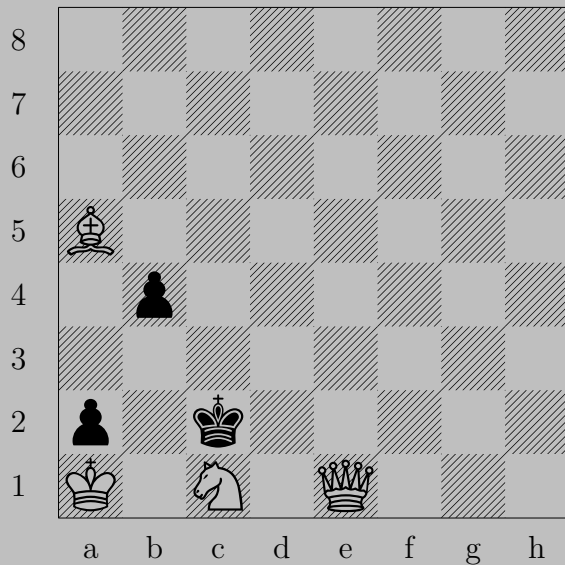
3219



♔f5, ♔h4  
♗e1

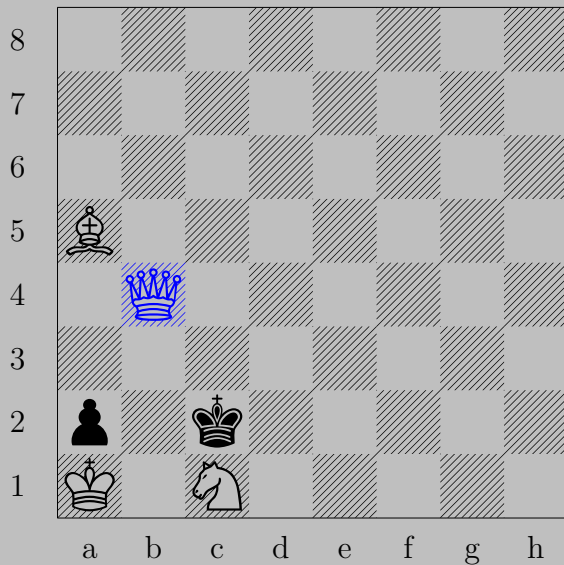





3220



E. Szentgyörgyi, 1933

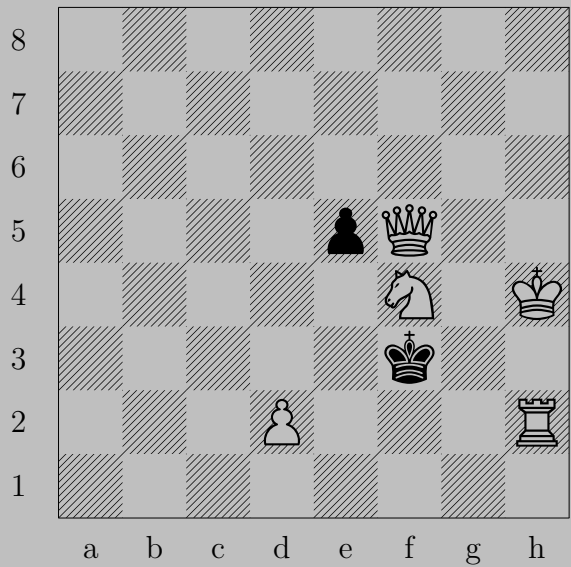
3220



x**b4**, x**c1** or x**d1**

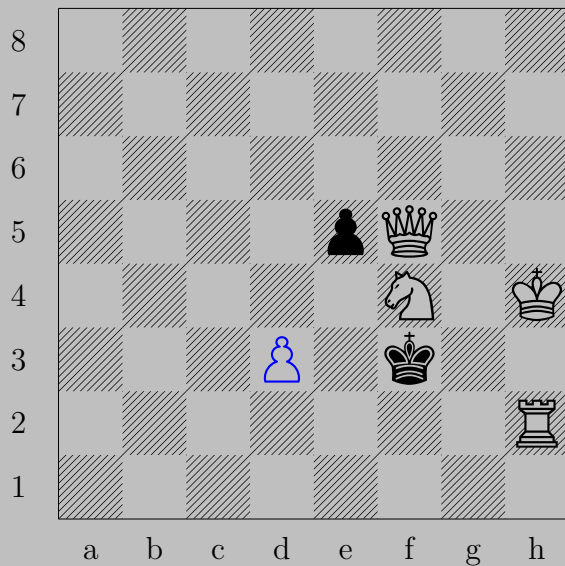
x**d2**

3221



E. Szentgyörgyi, 1933

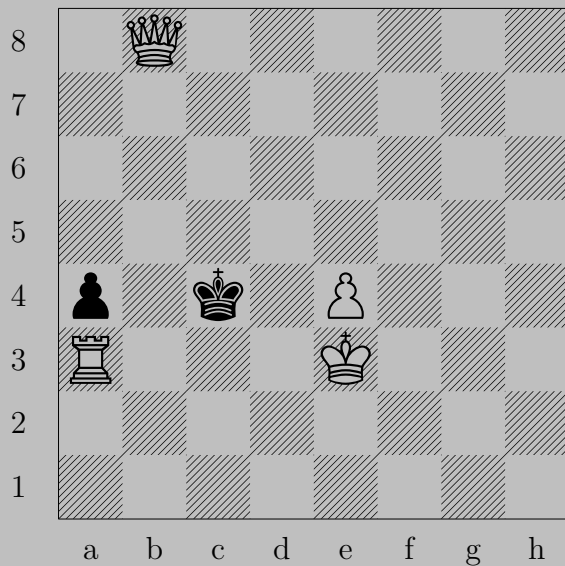
3221



$\triangleleft d3$

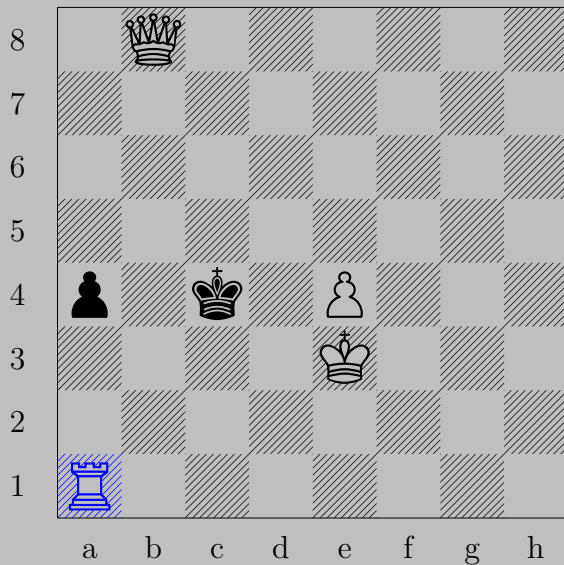
If  $\triangleleft e3$ ,  $\triangleleft e4$ . If  $\triangleleft e4$ ,  $\triangleleft \times e4$ .

3222



E. Szentgyörgyi, 1933

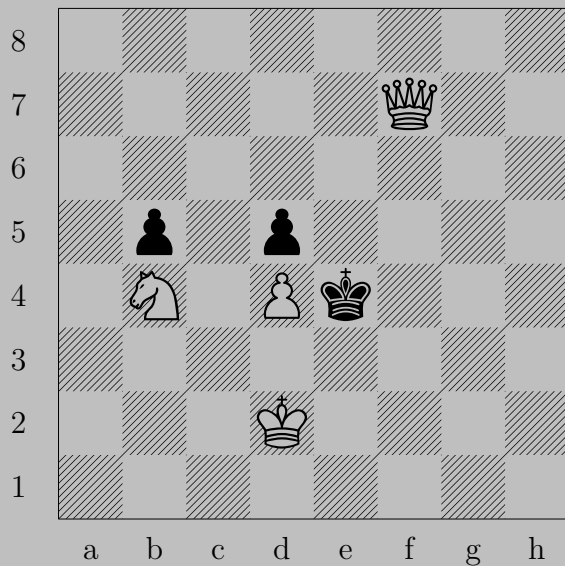
3222



$\text{♖a1}$ ,  $\text{♙a3}$  or  $\text{♚c3}$  or  $\text{♚c5}$

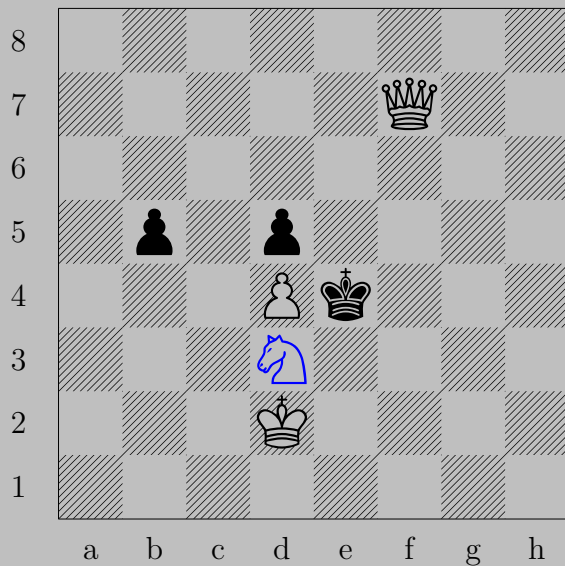
$\text{♜c1}$

3223



E. Szentgyörgyi, 1933

3223



♞d3, ♔xd4 or ♖b4

♚f4

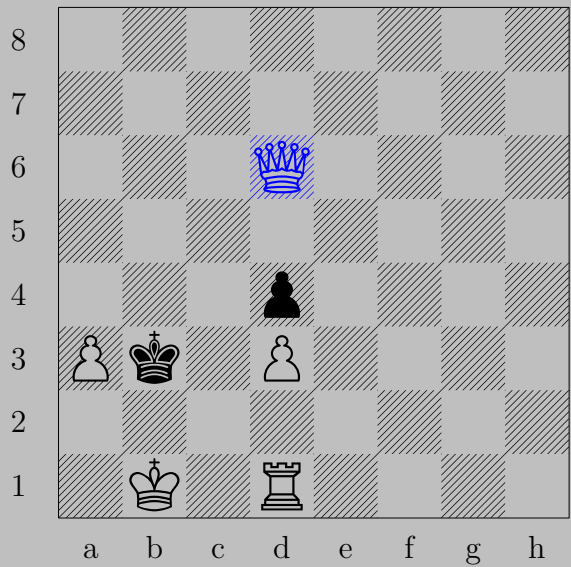


3224



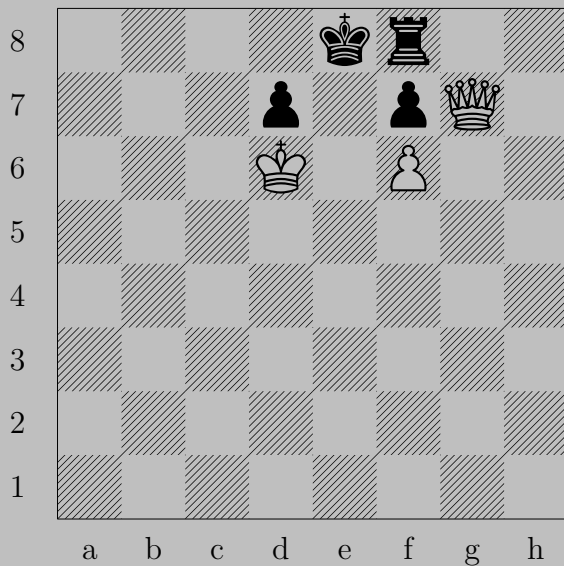
E. Szentgyörgyi, 1933

3224



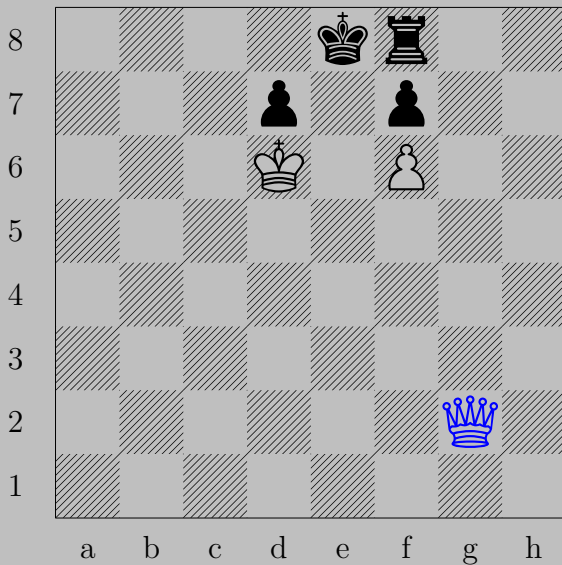
♙d6, ♙a4 or ♙c3  
♙b4

3225



E. Szentgyörgyi, 1933

3225



♔g2, ♔d8 or ♖g8-h8

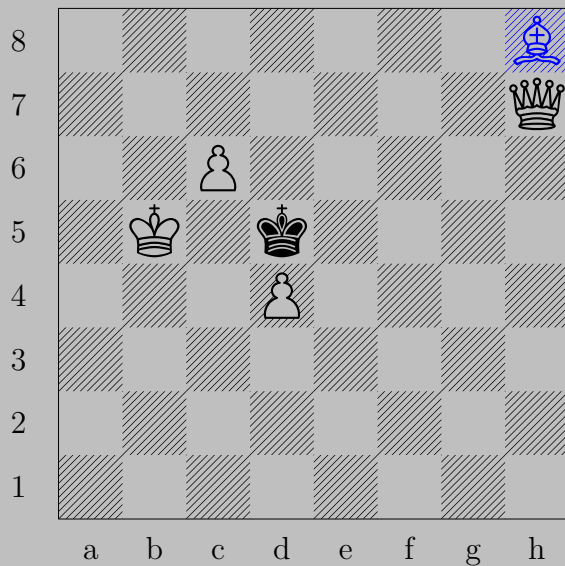
♕a8

3226



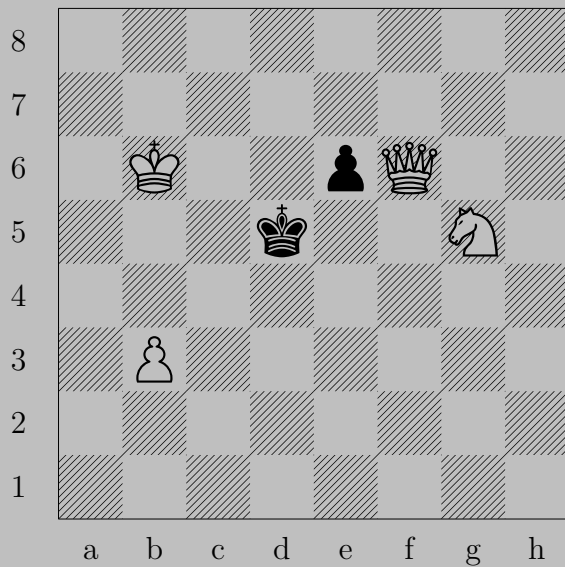
E. Szentgyörgyi, 1933

3226



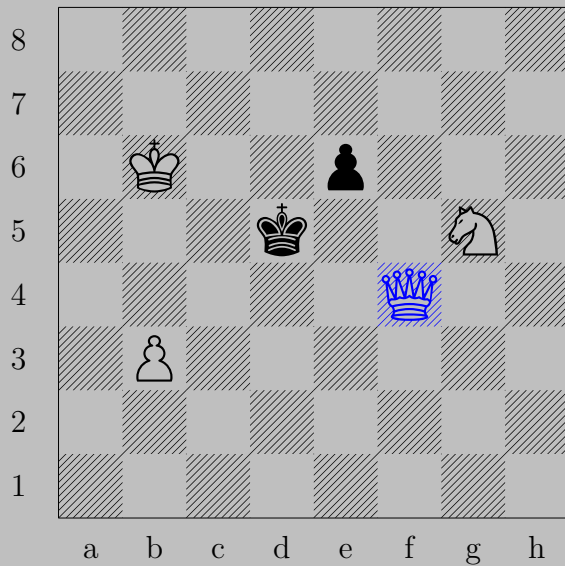
♔h8, ♕d6 or ♕e6  
♑d7

3227



E. Szentgyörgyi, 1933

3227

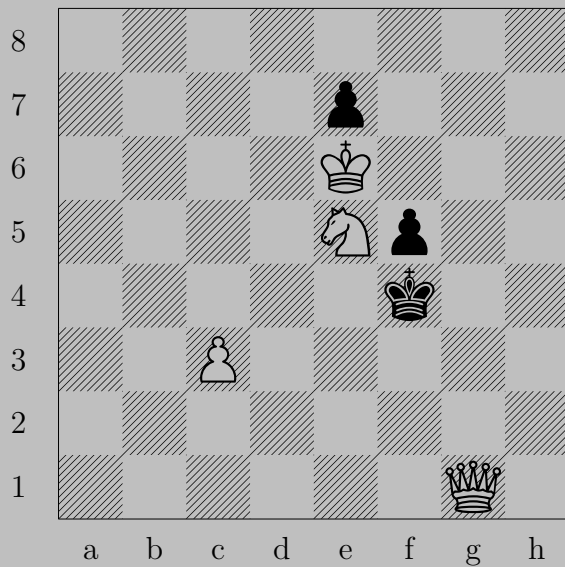


♔f4, ♖e5

♔d2

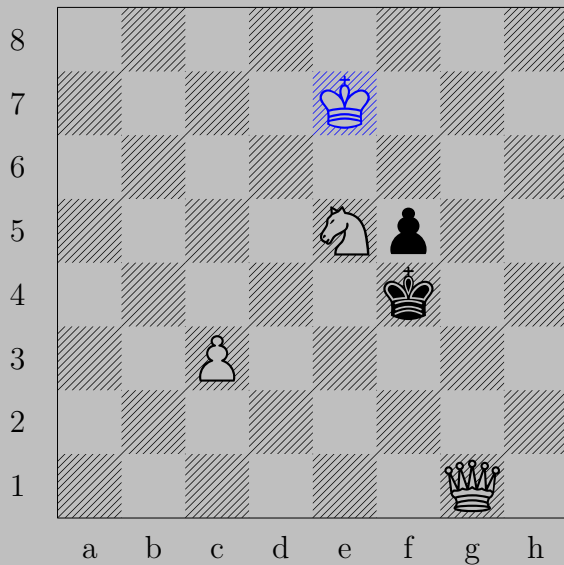


3228



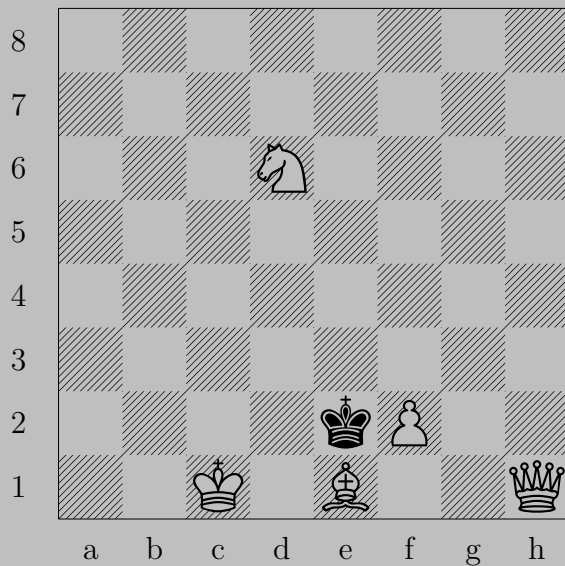
E. Szentgyörgyi, 1933

3228



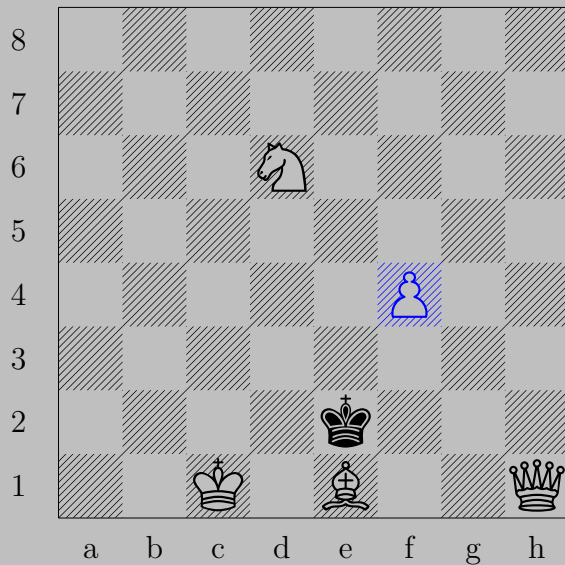
♔xe7, ♔xe5 or ♔e4  
♕d4

3229



E. Szentgyörgyi, 1933

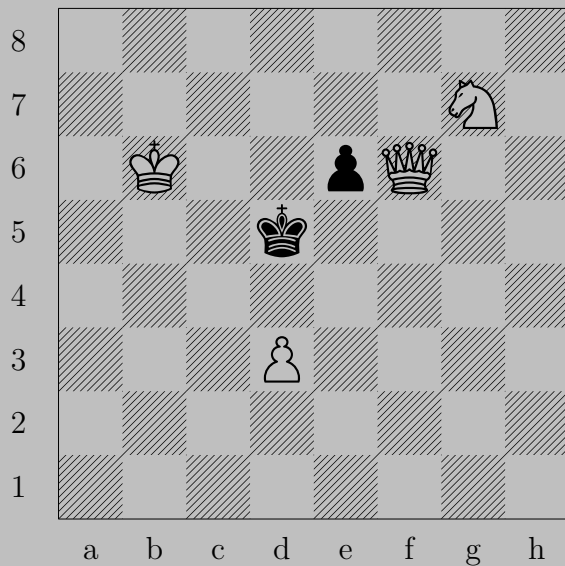
3229



♙f4, ♔d4 or ♕e4

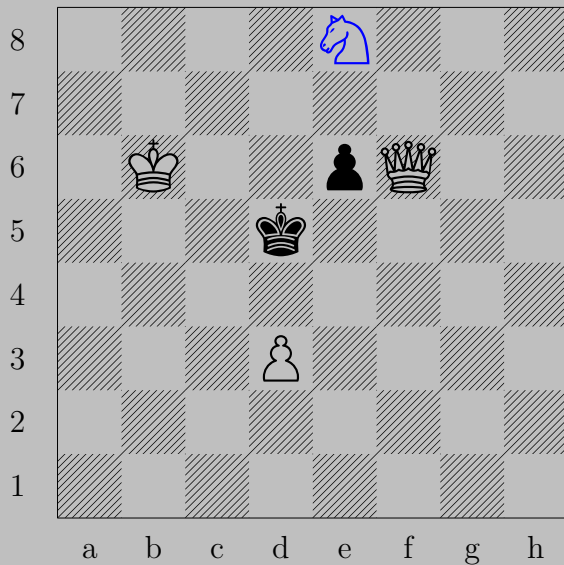
♚e5




3230



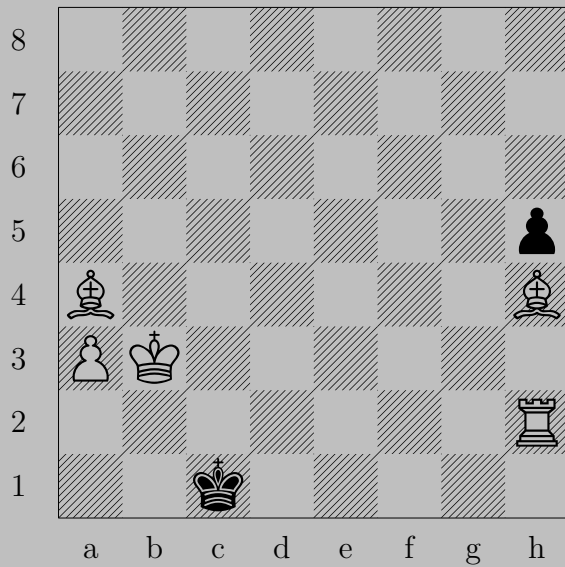
E. Szentgyörgyi, 1933

3230



e8, e5  
d6

3231



E. Szentgyörgyi, 1933

3231



$\text{Rg2}$

If  $\text{Qb1}$ ,  $\text{Rg1}$ . If  $\text{Qd1}$ ,  $\text{Qb2}$ .



3232



E. Szentgyörgyi, 1933

3232

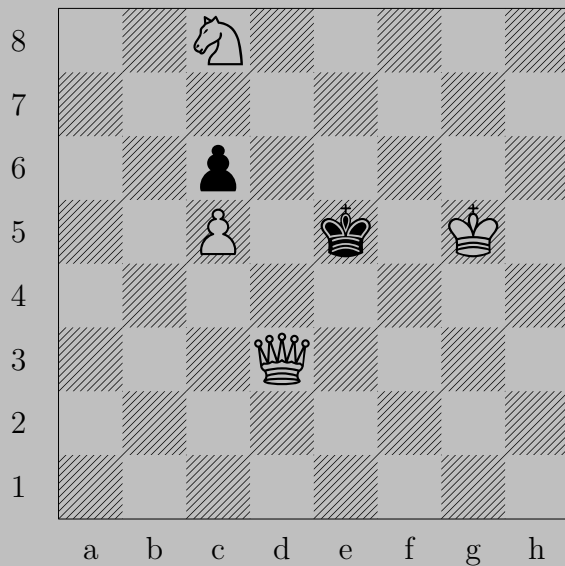


$\triangleleft f6$

If  $\triangleleft e6$ ,  $\triangleleft e7$ .

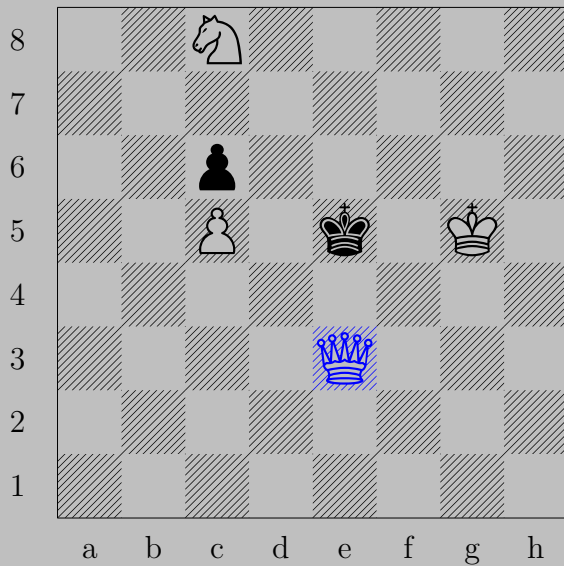
Otherwise,  $\triangleleft \times d7$ .

3233



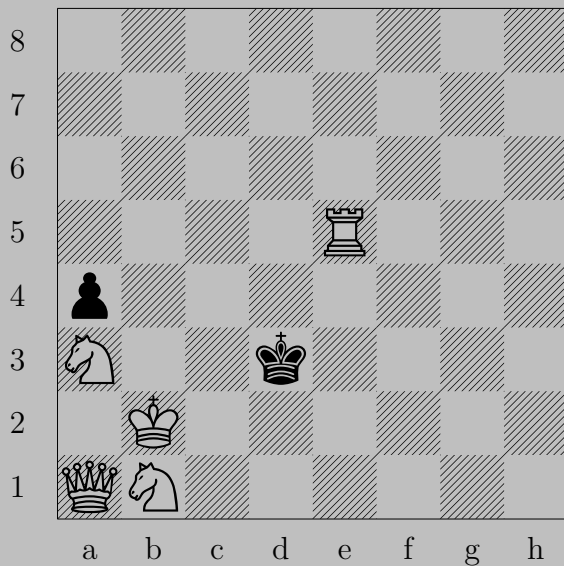
E. Szentgyörgyi, 1933

3233



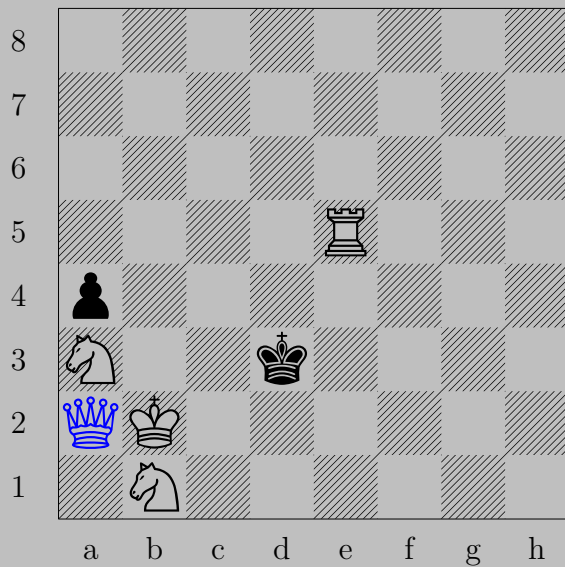
♔e3+, ♔d5  
♞b6

3234



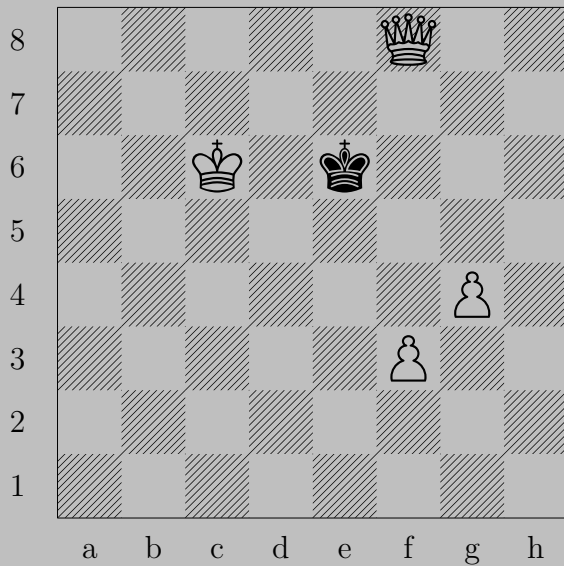
E. Szentgyörgyi, 1933

3234



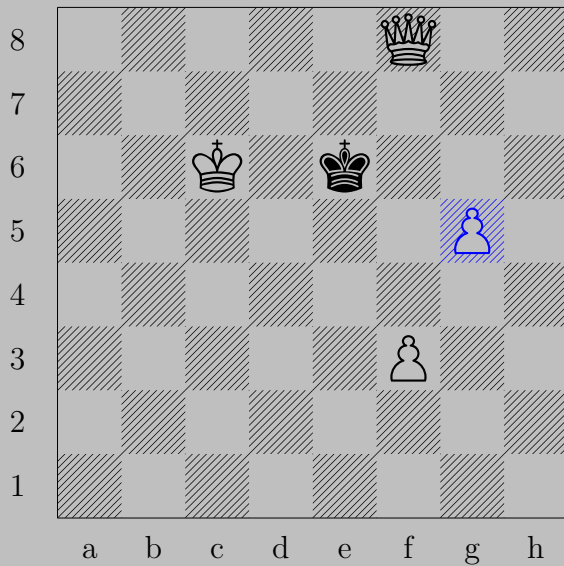
♙a2, ♚d4  
♙d5

3235



E. Szentgyörgyi, 1933

3235



♙g5, ♚e5  
♚f6



3236



E. Szentgyörgyi, 1933

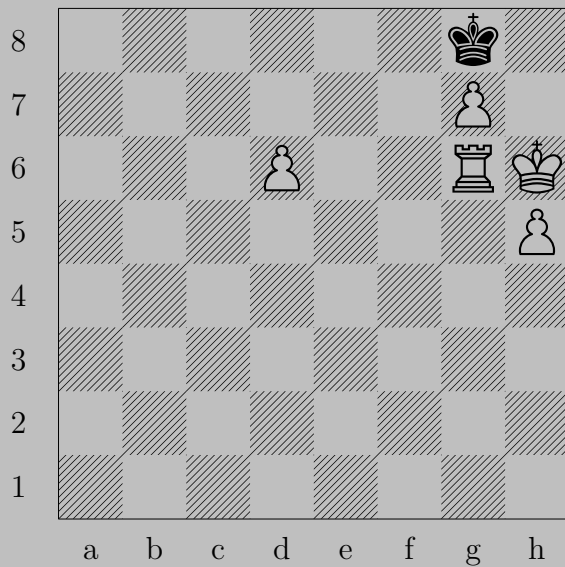
3236



♖c4, ♔d4 or ♔d6

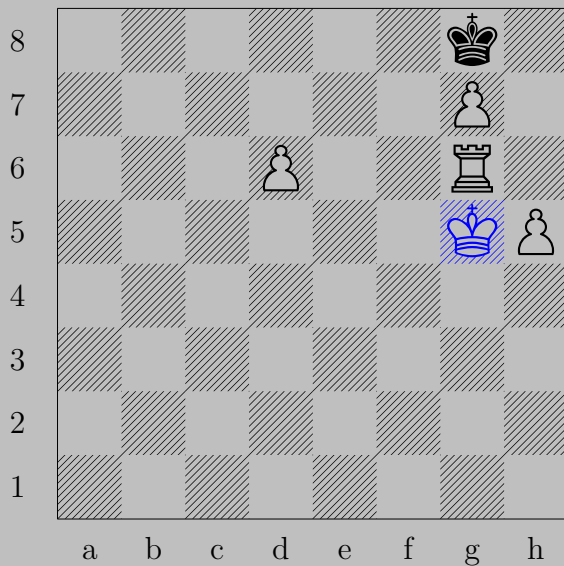
♚d5

3237



E. Szentgyörgyi, 1933

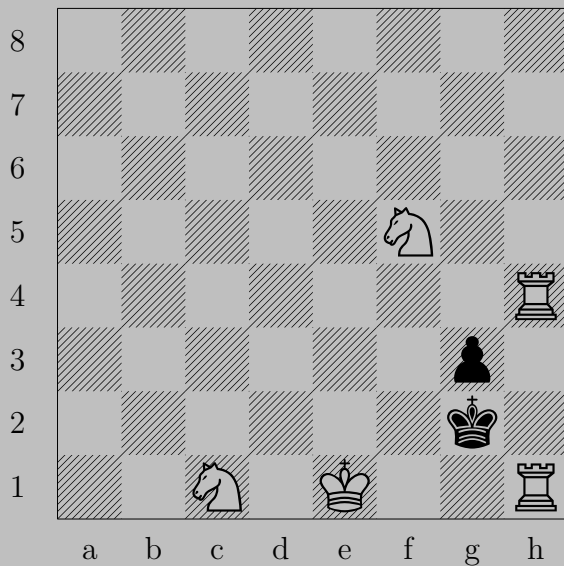
3237



♔g5, ♔f7 or ♔h7

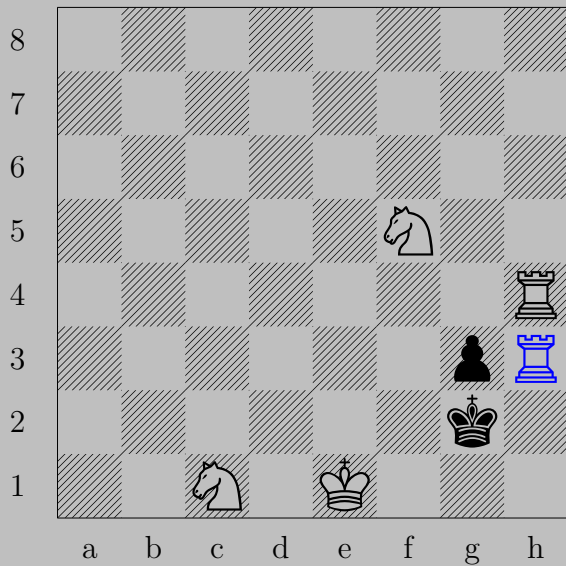
♟g8(♔)

3238



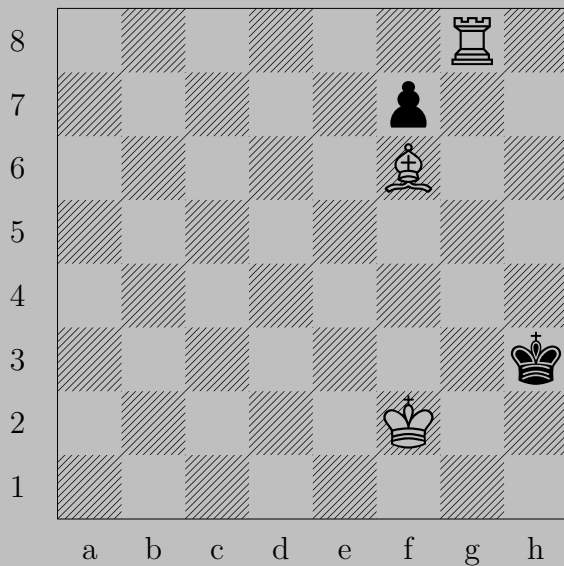
E. Szentgyörgyi, 1933

3238



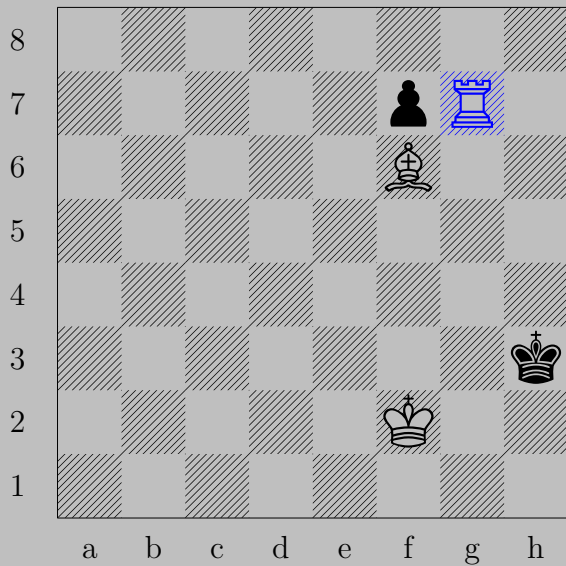
$\text{♖}(h1)h3, \text{♔}f3$   
 $\text{♖}\times g3$

3239



E. Szentgyörgyi, 1933

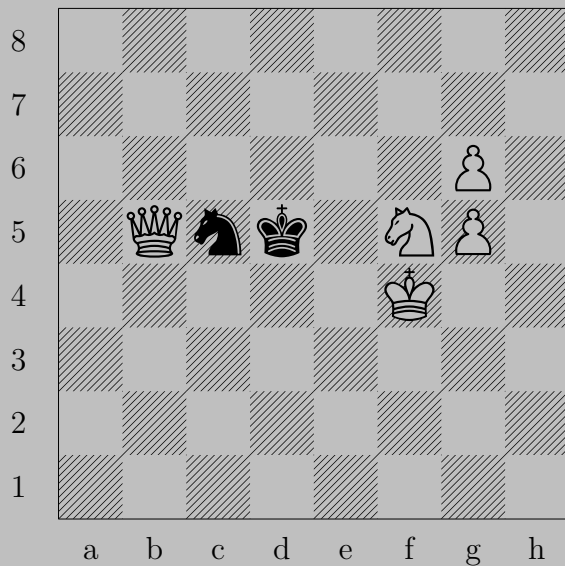
3239



$\text{♖g7}, \text{♔h2}$   
 $\text{♜h7}$

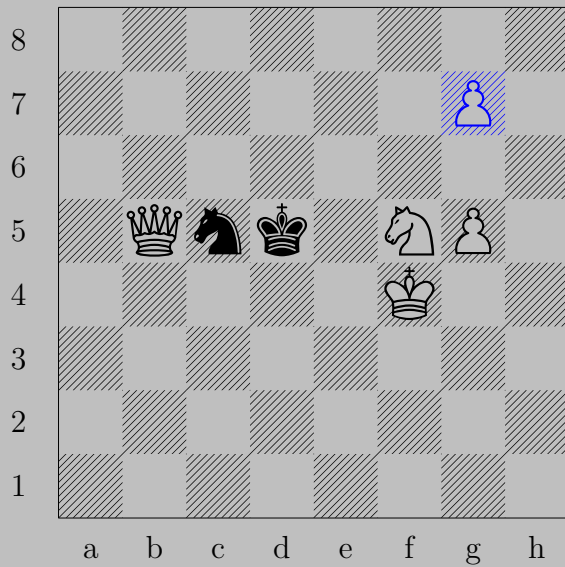


3240



E. Szentgyörgyi, 1933

3240



♙g7, ♔e6

♙g8(♚)

3241



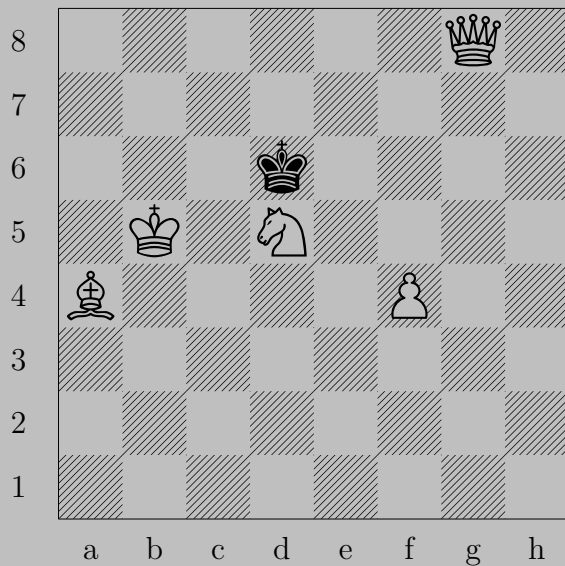
E. Szentgyörgyi, 1933

3241



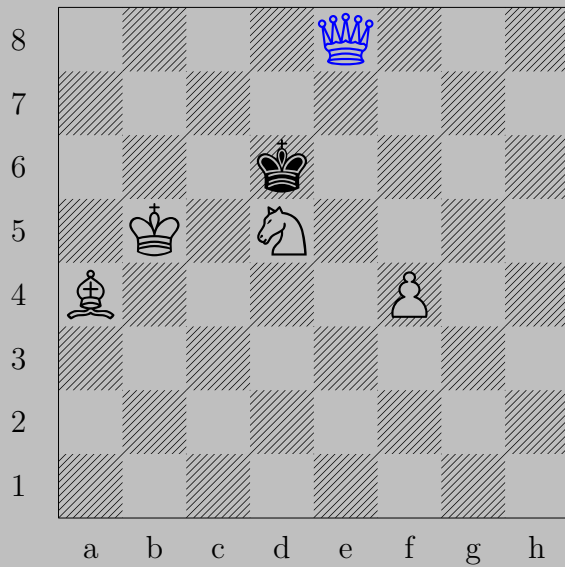
$\text{Ne6+}, \text{Kc6}$   
 $\text{Pd8}(\text{N})$

3242



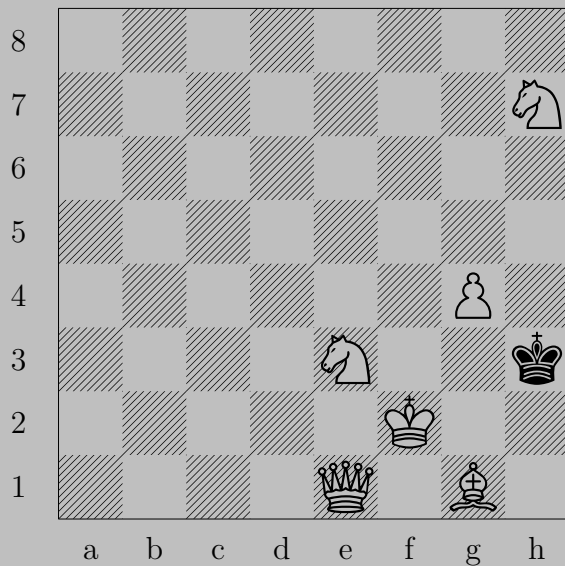
E. Szentgyörgyi, 1933

3242



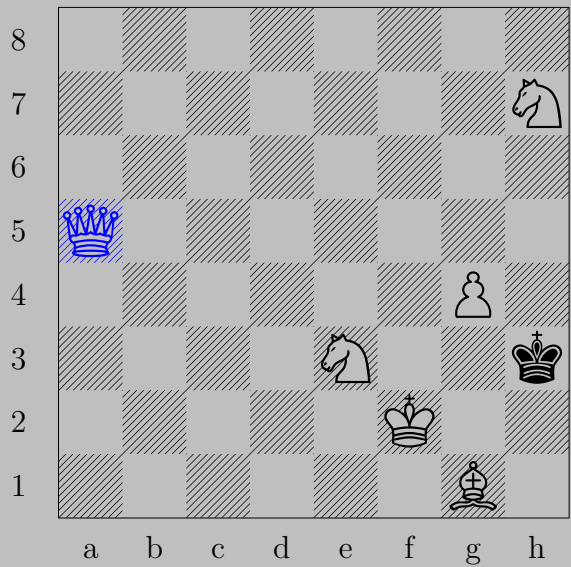
♙e8, ♚x d5  
♙e5

3243



E. Szentgyörgyi, 1933

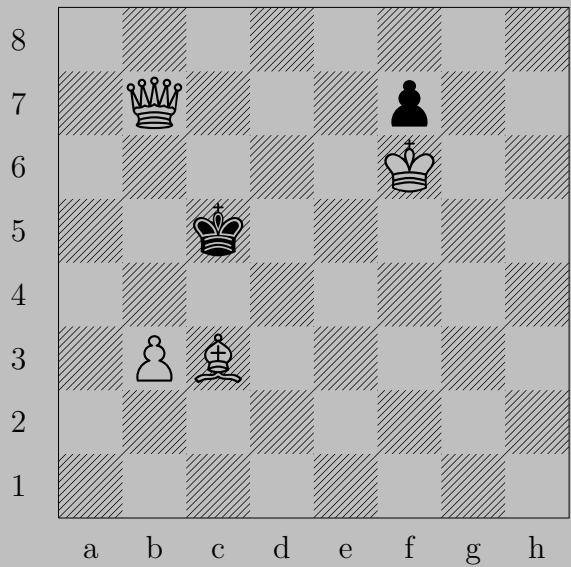
3243



♙a5, ♔h4  
♙h5

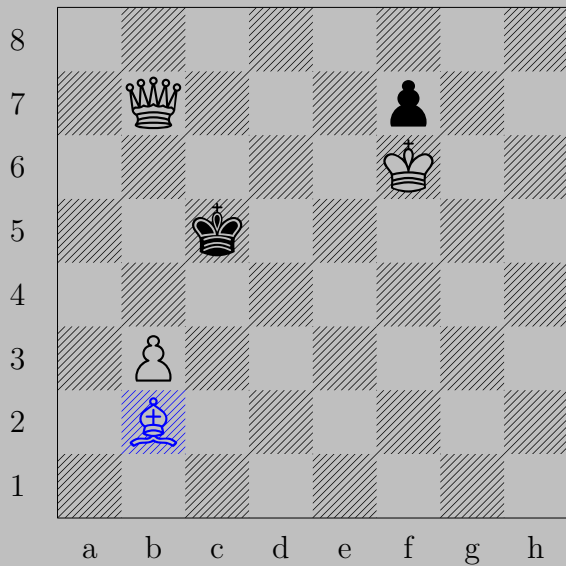


3244



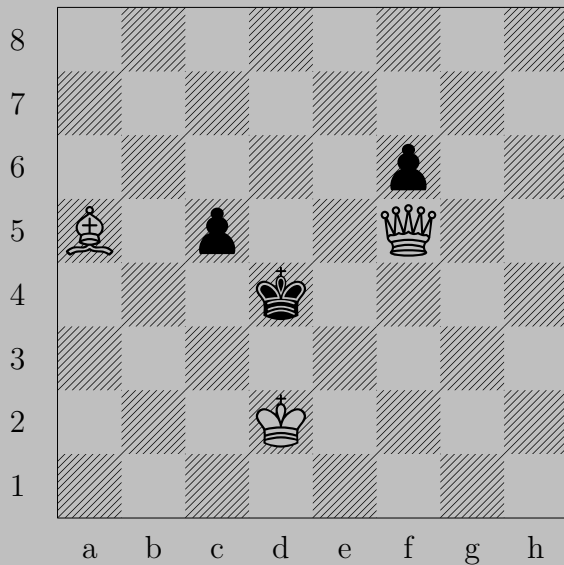
E. Szentgyörgyi, 1933

3244



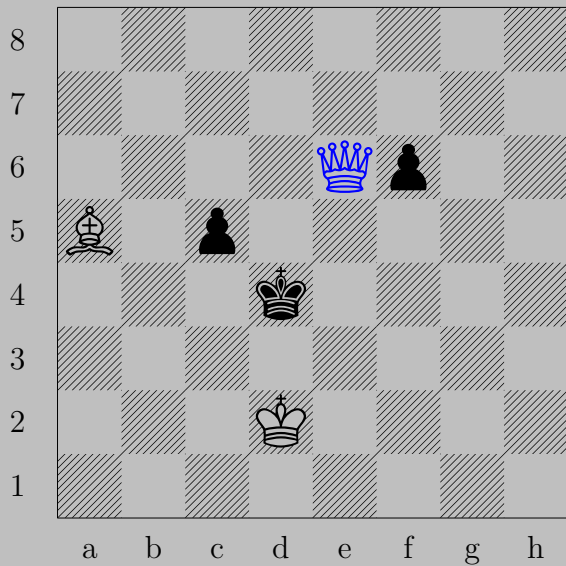
♙b2, ♚d6  
♙a3

3245



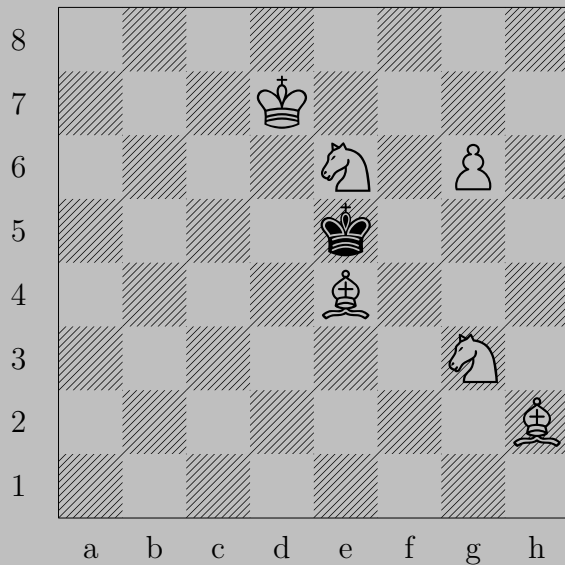
E. Szentgyörgyi, 1933

3245



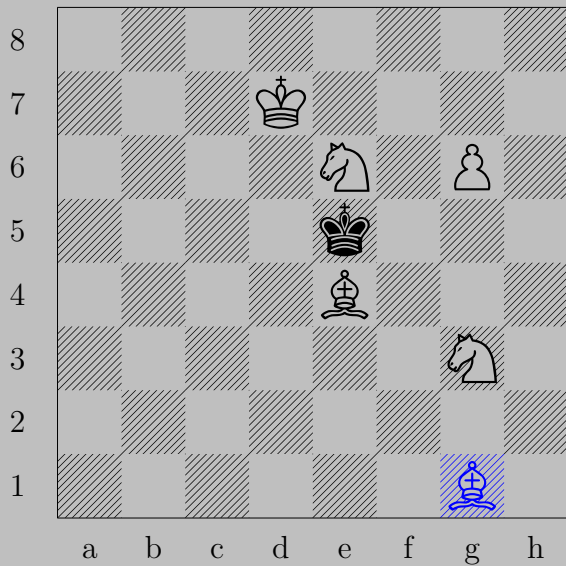
♔e6, ♕f5  
♗c3

3246



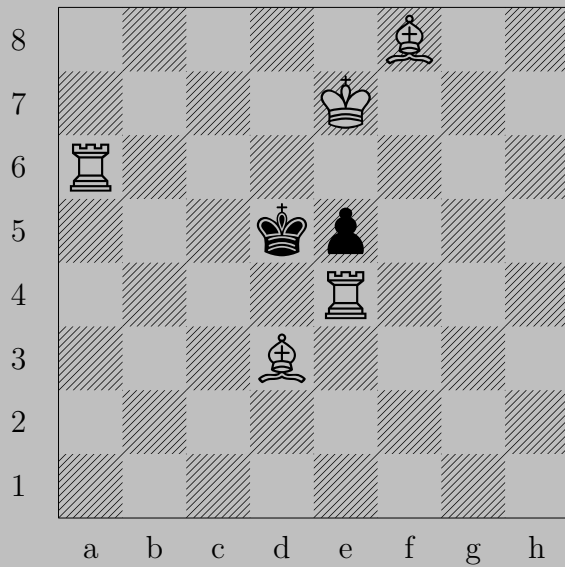
E. Szentgyörgyi, 1933

3246



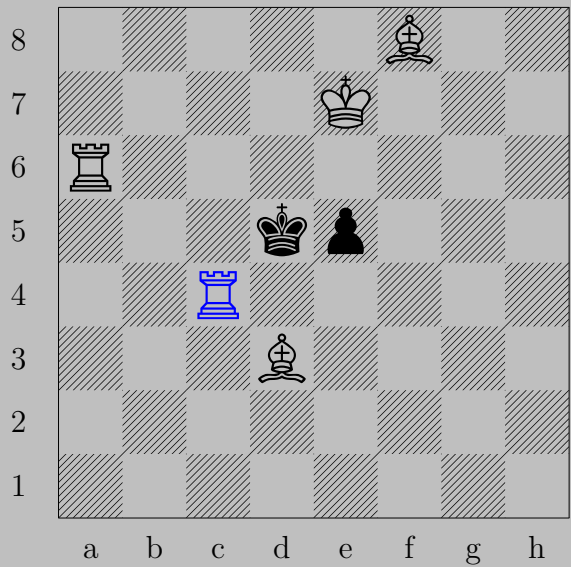
♙g1, ♚f6  
♜d4

3247



E. Szentgyörgyi, 1933

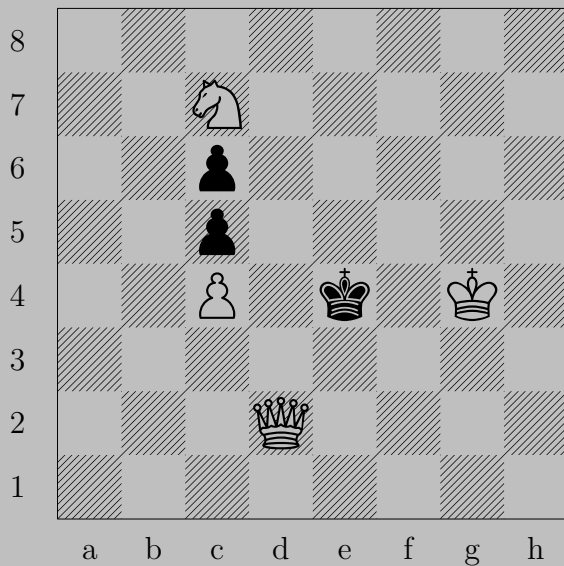
3247



♖c4, ♔e4  
♖a5

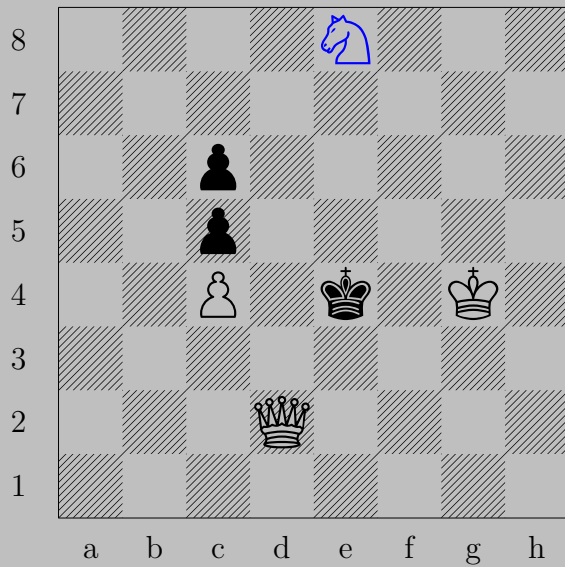





3248



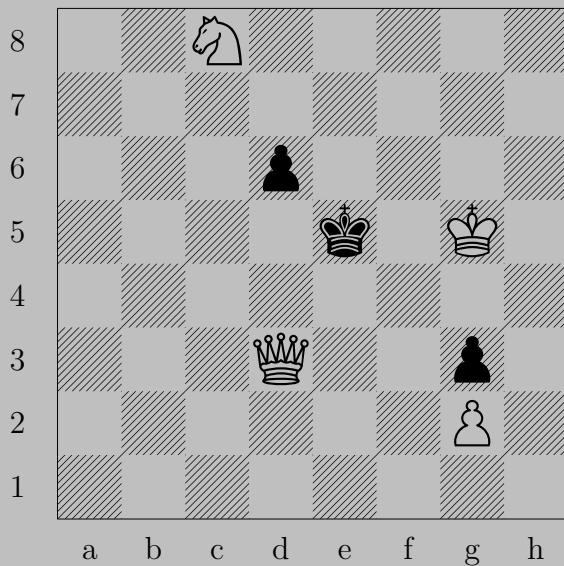
E. Szentgyörgyi, 1933

3248



e8, e5  
e3

3249



E. Szentgyörgyi, 1933

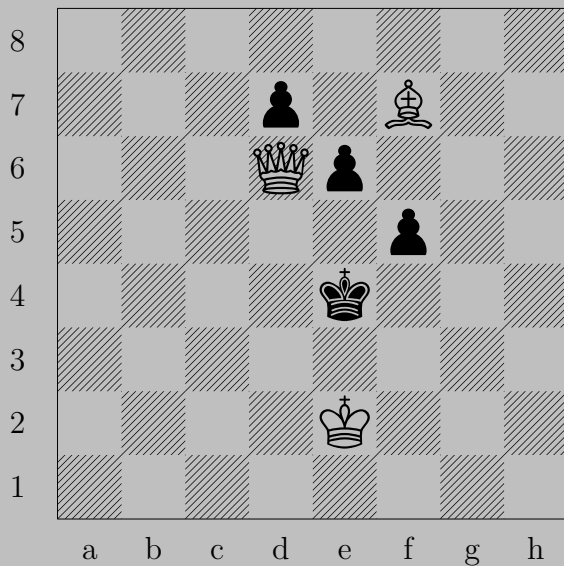
3249



♔g6

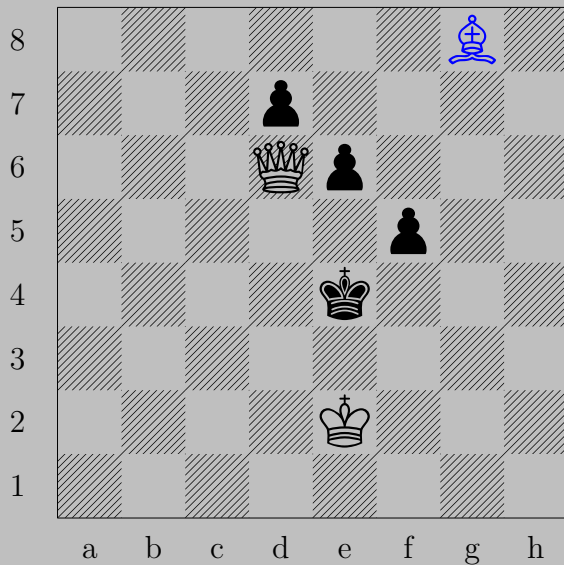
If ♔f4, ♕d4. If ♔e6, ♕f5. If ♖d5, ♗e3.

3250



E. Szentgyörgyi, 1933

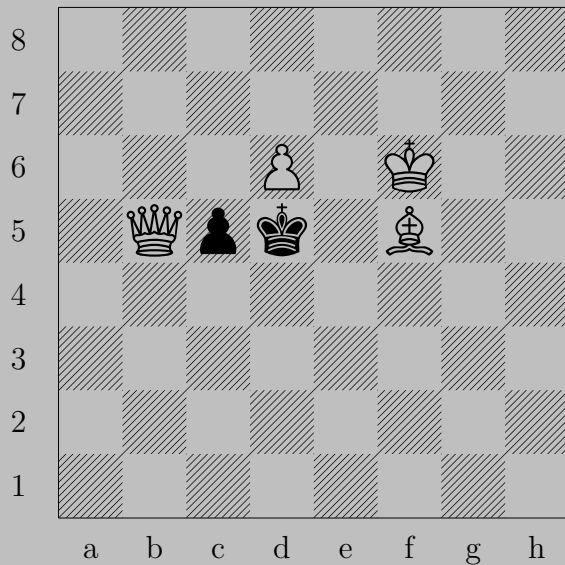
3250



♙g8

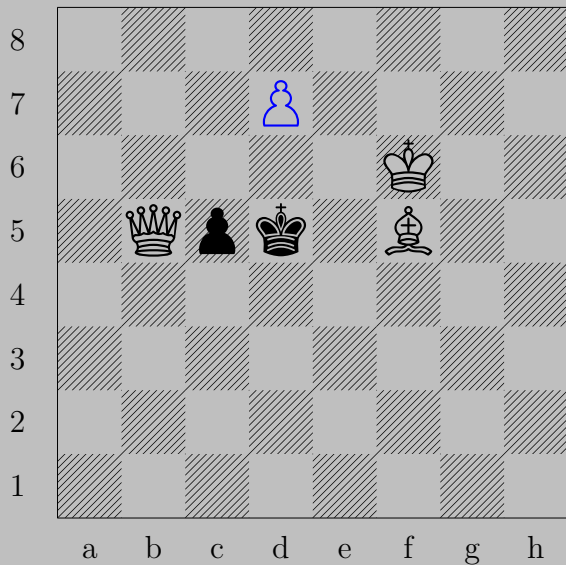
If ♜e5, ♚b4. If ♜f4, ♙h7.

3251



E. Szentgyörgyi, 1933

3251

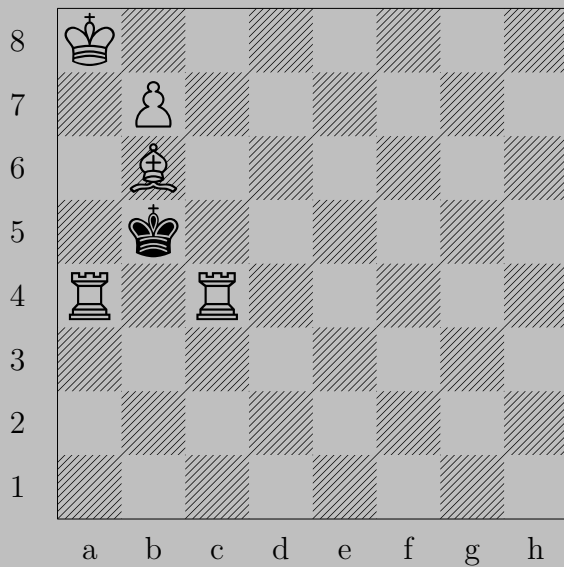


♙d7

If ♙d4, ♜d3. If ♚d6, ♙d8(♜).

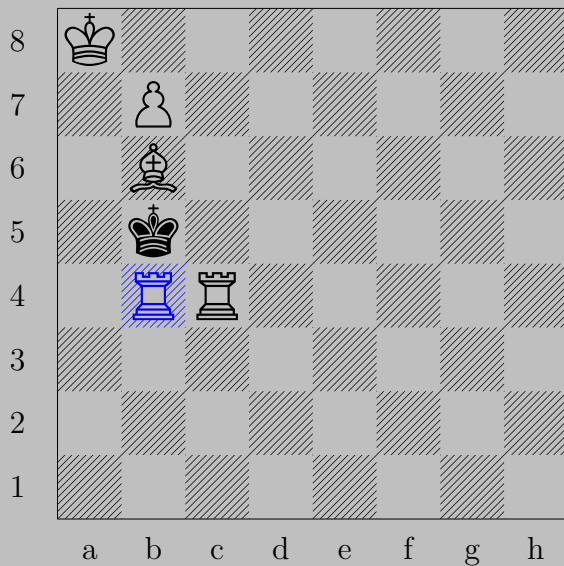


3252



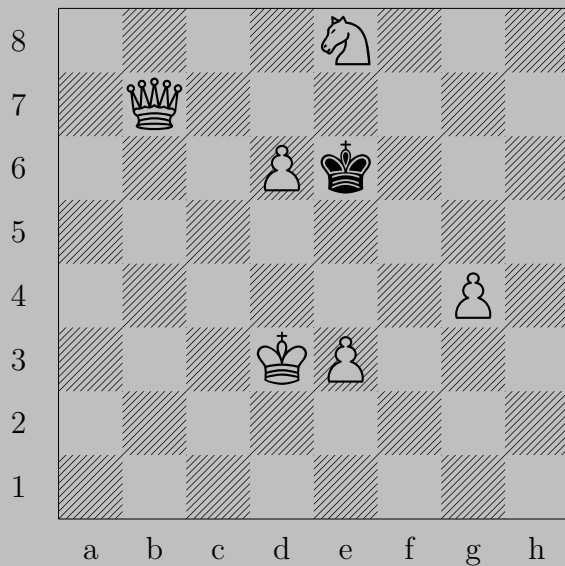
E. Szentgyörgyi, 1928

3252



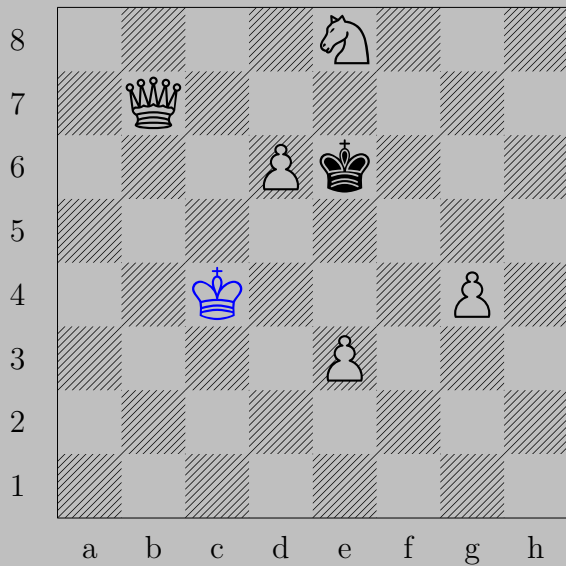
$\text{♞(a4)b4+}$ ,  $\text{♔a6}$   
 $\text{♙a7(♖)}$

3253



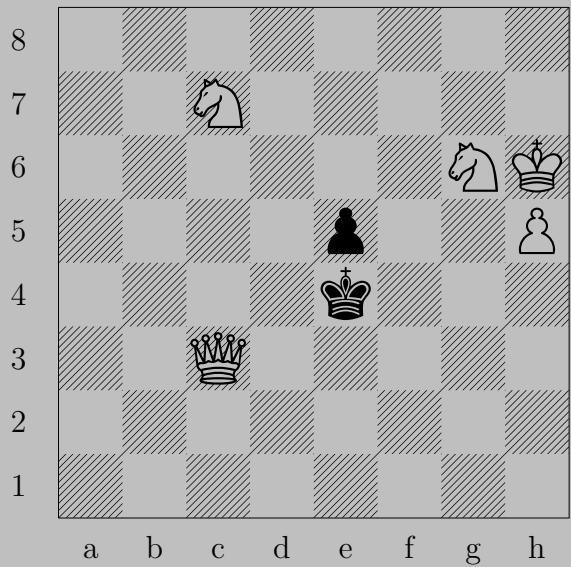
E. Szentgyörgyi, 1936

3253



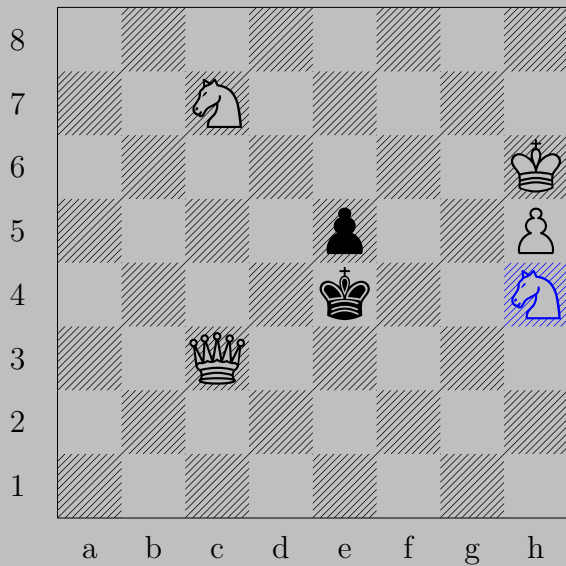
♔c4, ♕e5  
♑e7




3254



E. Szentgyörgyi, 1936

3254



h4, f4  
f3

3255



E. Szentgyörgyi, 1936

3255

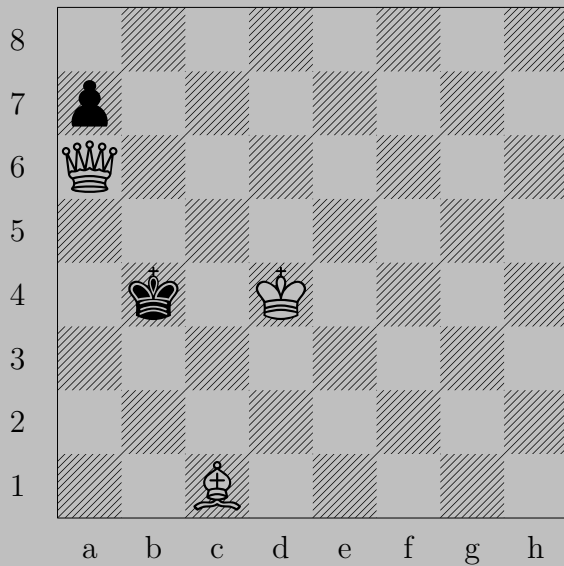


♔c6

If ♕×e6, ♖e4. If ♔d8 or ♔f8, ♕×f6.

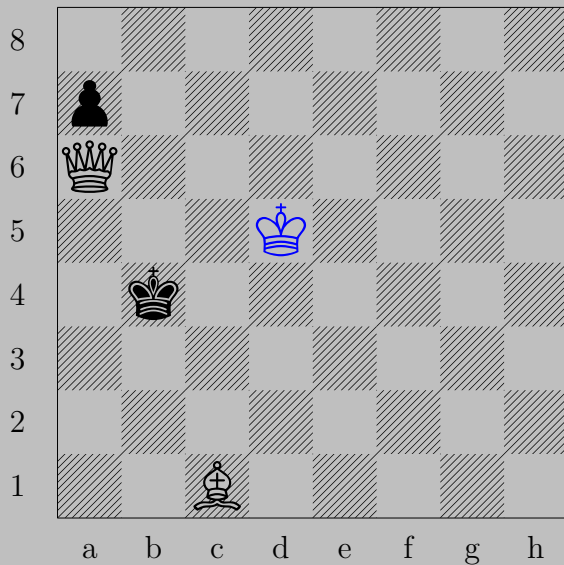


3256



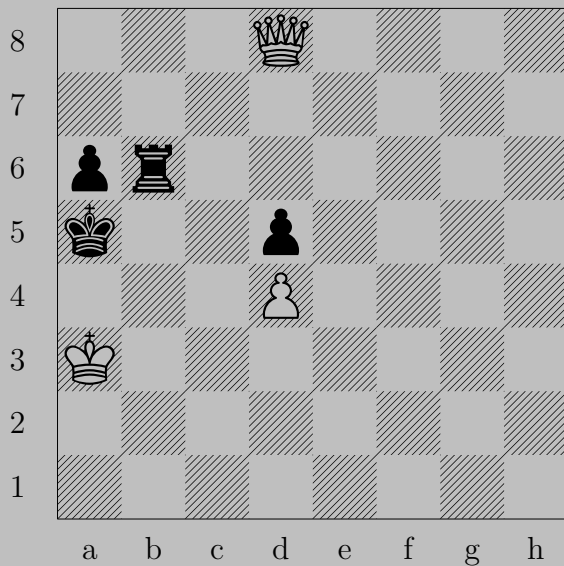
E. Szentgyörgyi, 1936

3256



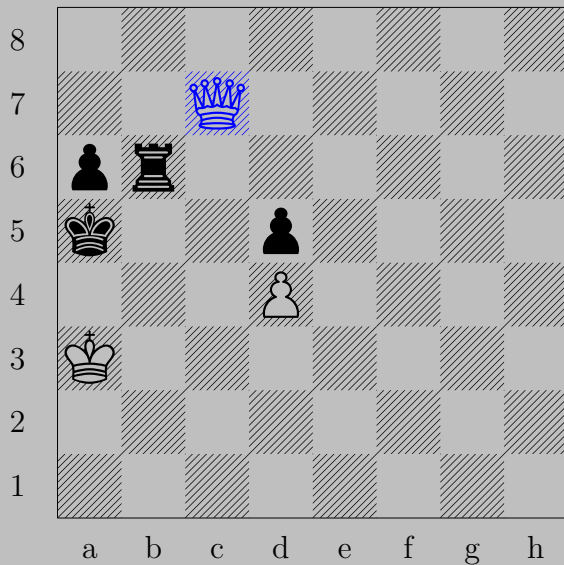
♔d5, ♕b3 or ♕c3  
♕c4]

3257



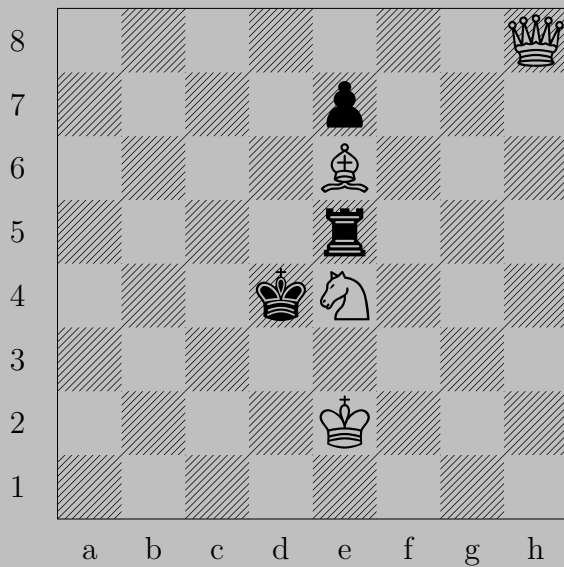
E. Szentgyörgyi, 1936

3257



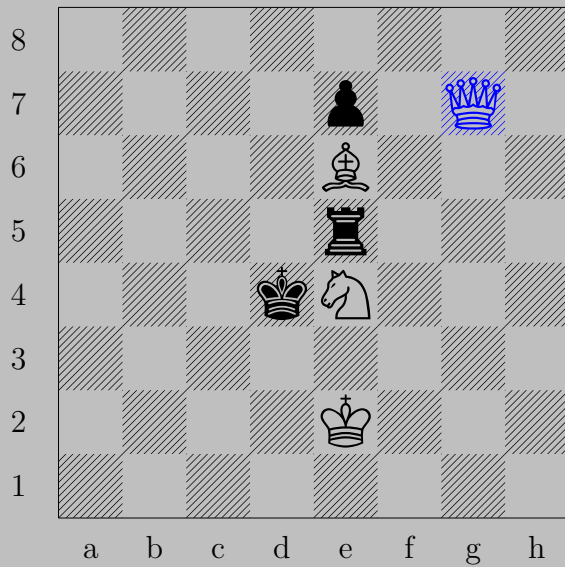
♔c7, ♔b5  
♔c5

3258



E. Szentgyörgyi, 1936

3258



♔g7, ♔x e4  
♔g4

3259



E. Szentgyörgyi, 1936

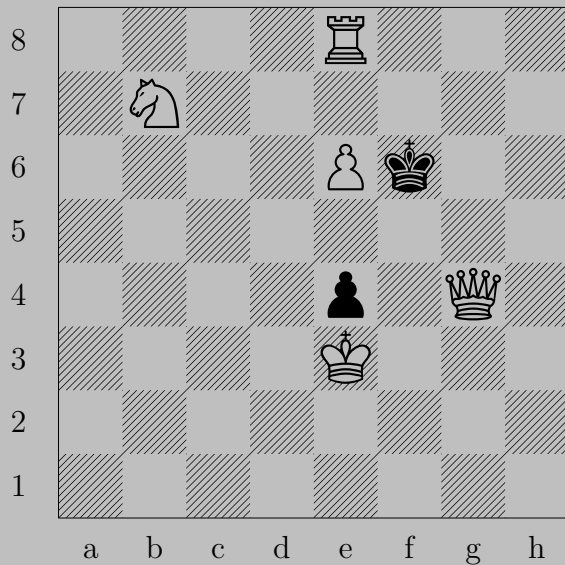
3259



$\text{♔g8}(\text{♕}), \text{♚f8}$   
 $\text{♞g6}$



3260



E. Szentgyörgyi, 1936

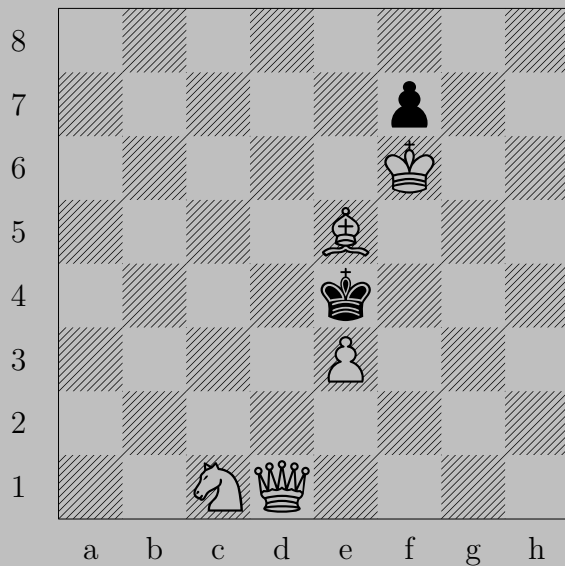
3260



♔f4, ♖e3

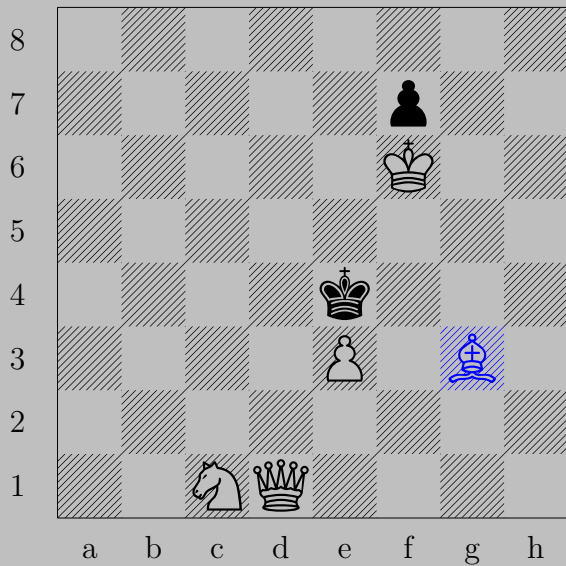
♚g5




3261



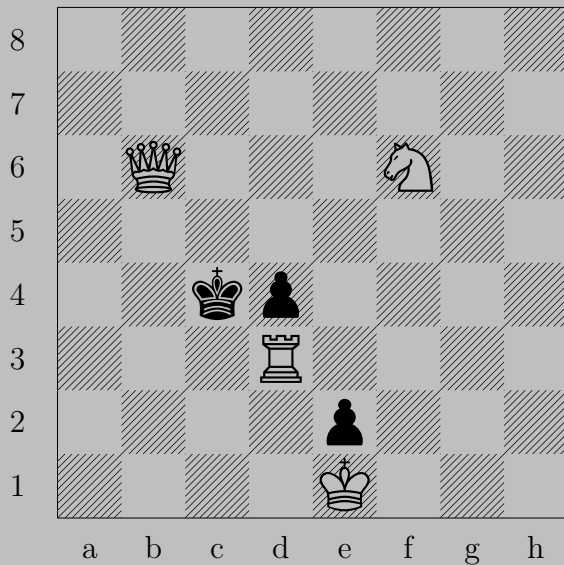
E. Szentgyörgyi, 1936

3261



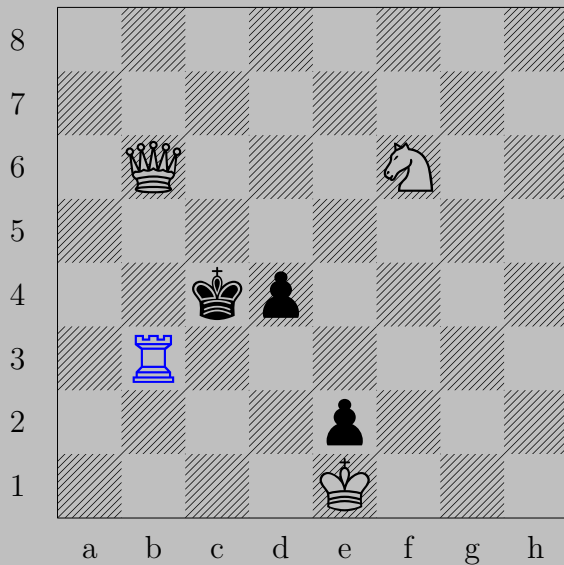
g3, xe3  
d3

3262



E. Szentgyörgyi, 1936

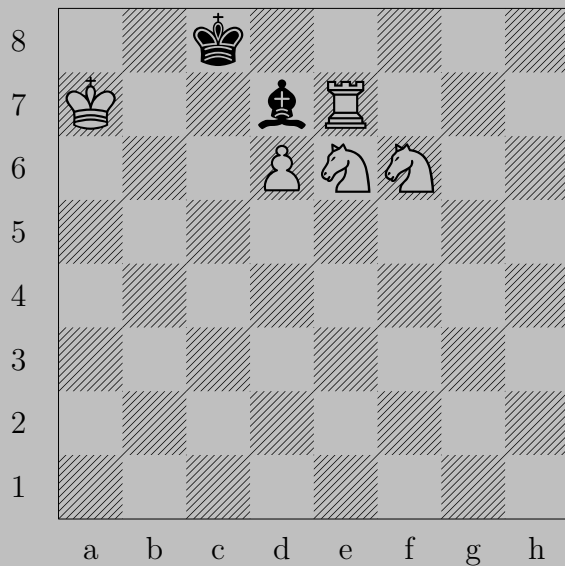
3262



♖b3, ♘d3

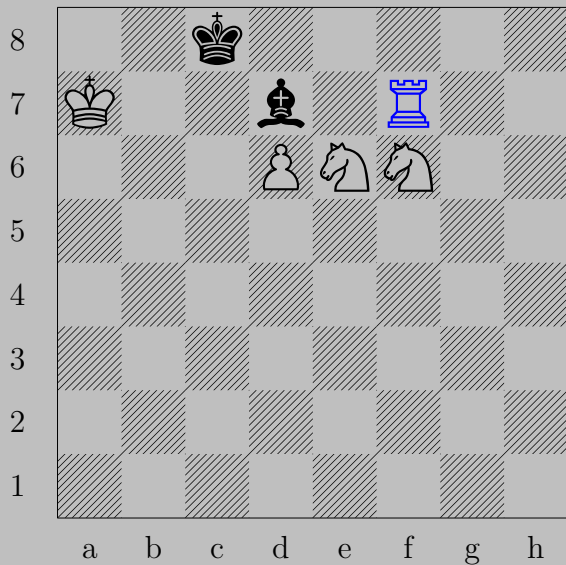
♙b4

3263



E. Szentgyörgyi, 1936

3263

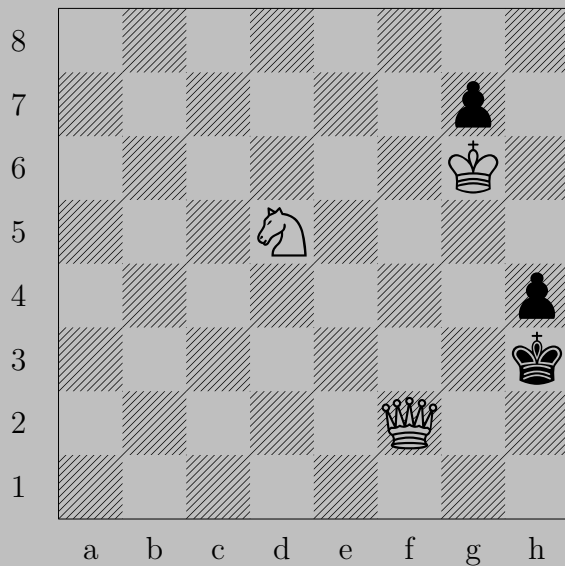


♖f7

If ♔×e6, ♖f8. If ♔a4-e8, ♖c7.

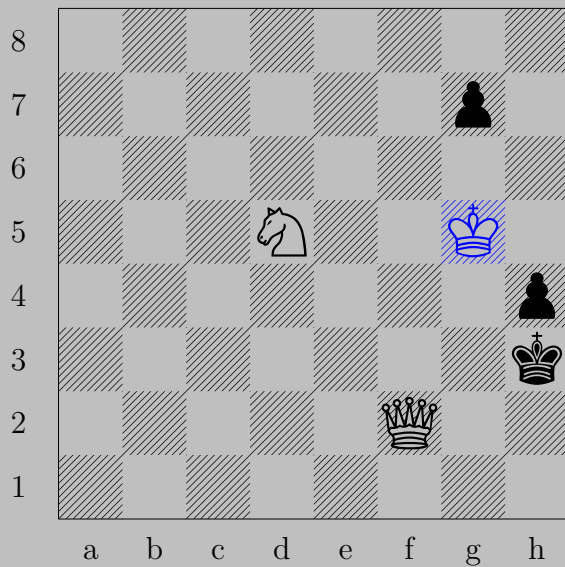


3264



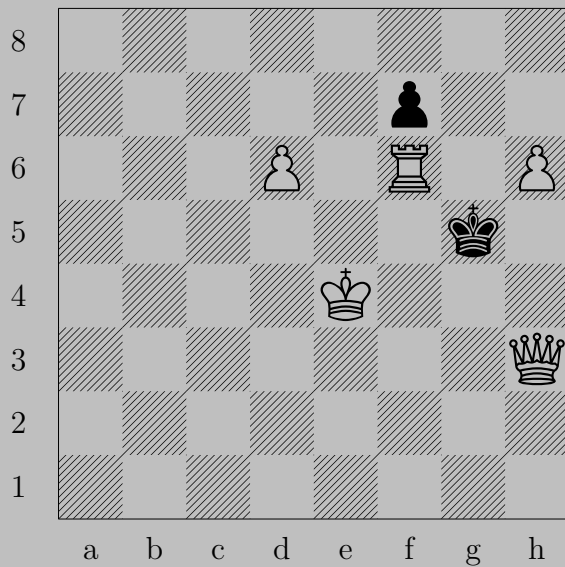
E. Szentgyörgyi, 1936

3264



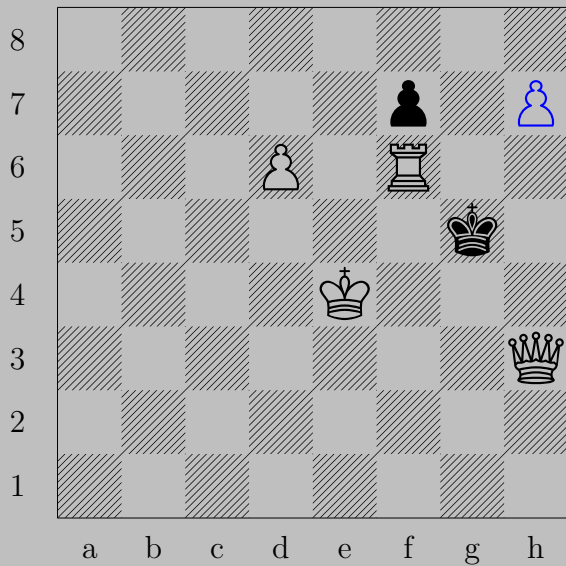
♔g5, ♖g6  
♘f4

3265



E. Szentgyörgyi, 1936

3265



♙h7, ♔xf6

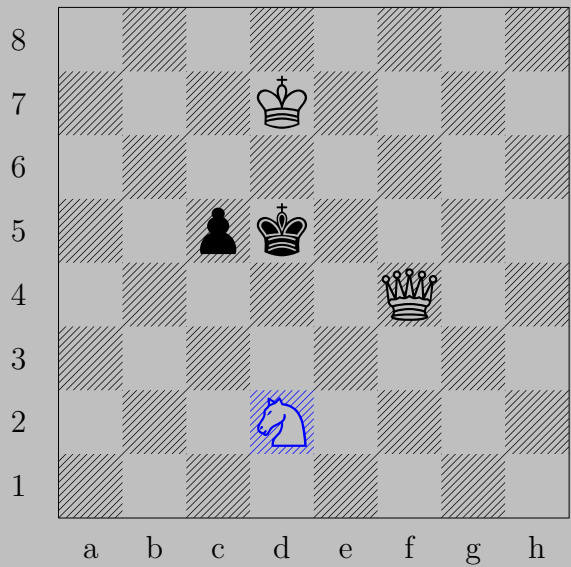
♚h6




3266



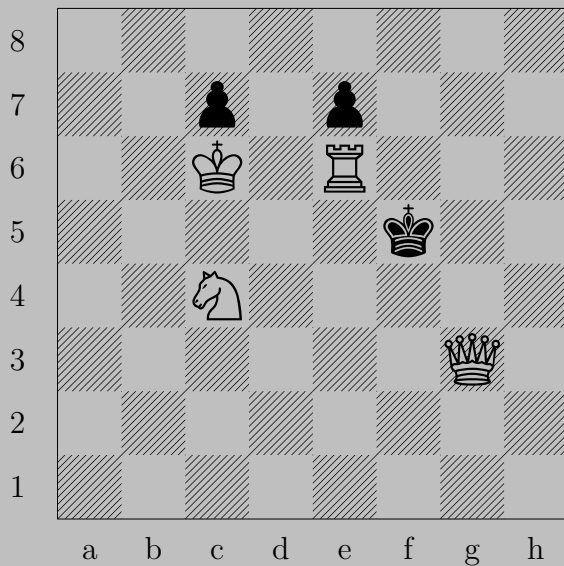
E. Szentgyörgyi, 1936

3266



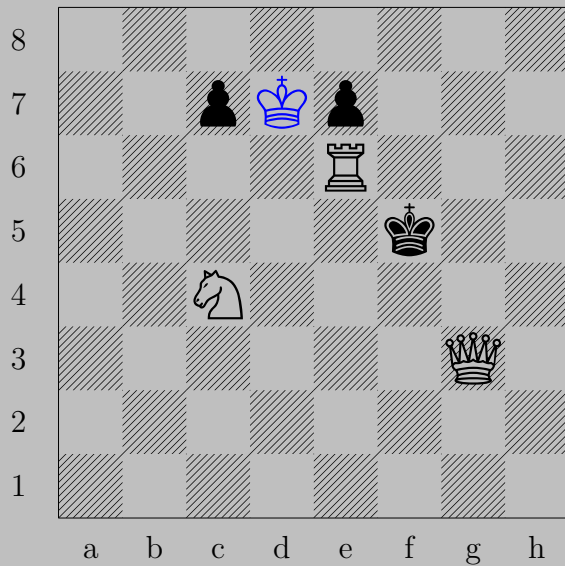
d2, c4  
d6

3267



E. Szentgyörgyi, 1936

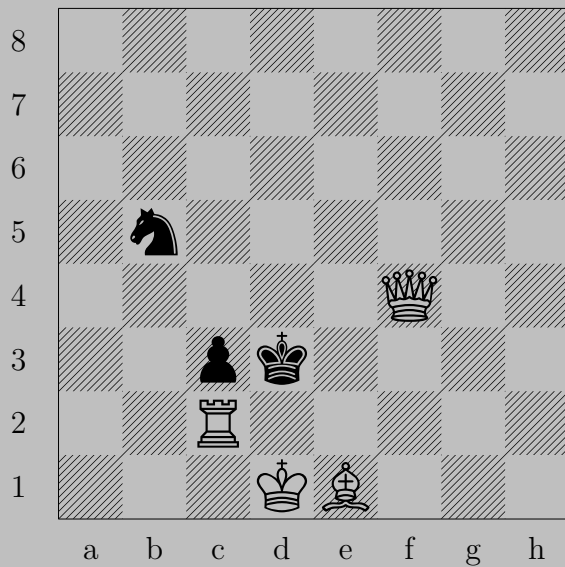
3267



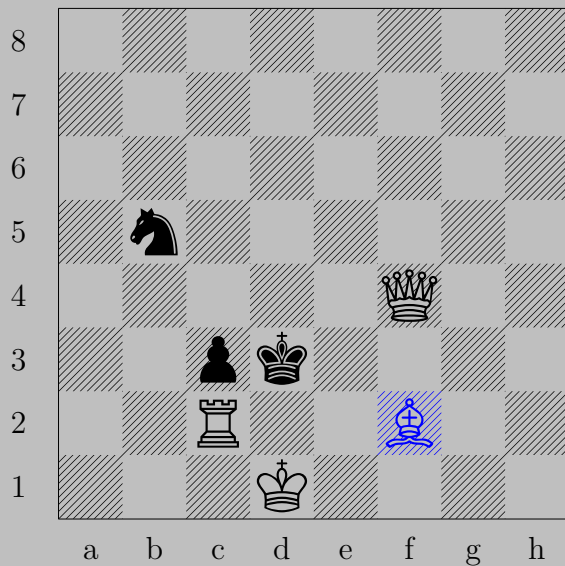
♔d7, ♖c6 or ♖c5

♞e3





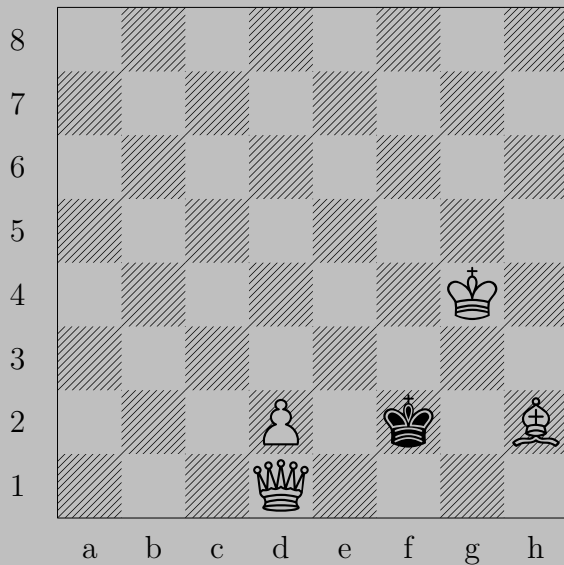
3268



$\text{♗f2}$

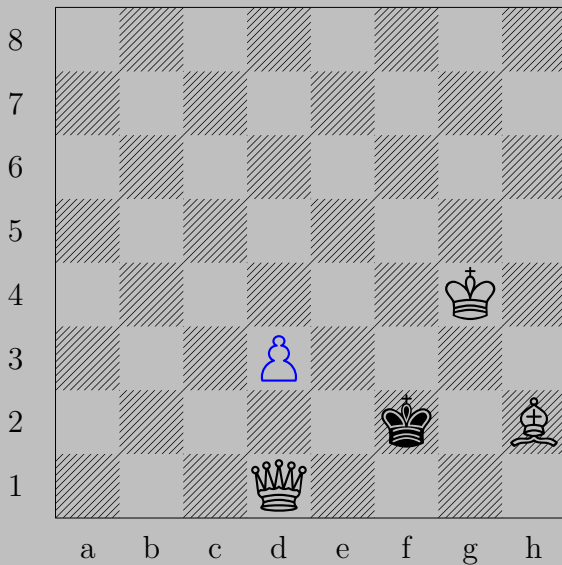
If  $\text{♞d4}$ ,  $\text{♚xd4}$ . Otherwise,  $\text{♚d4}$ .

3269



E. Szentgyörgyi, 1936

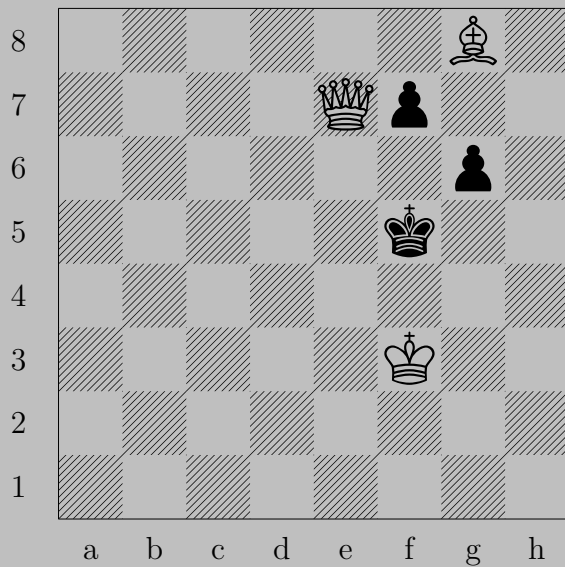
3269



♙d3

If ♔e3, ♘g1. If ♔g2, ♚g1.

3270



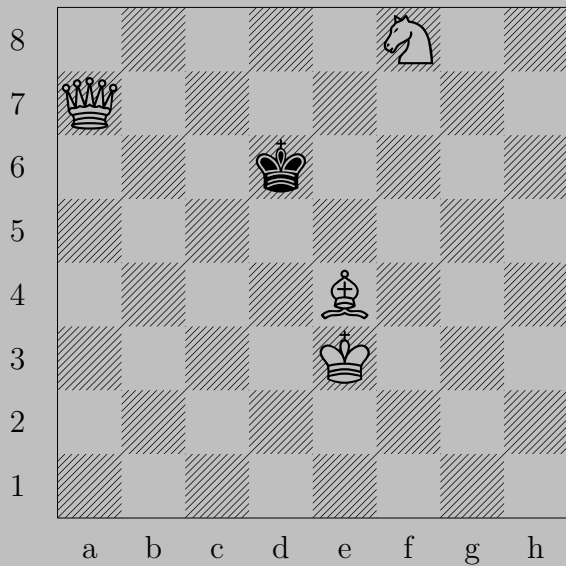
E. Szentgyörgyi, 1936

3270



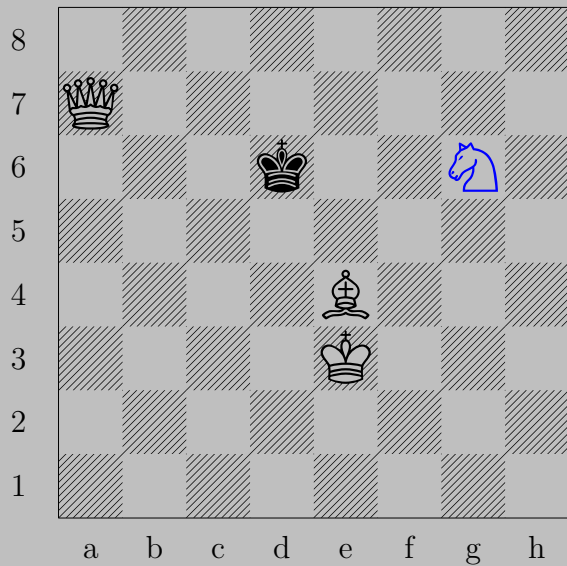
♔xf7, ♖g5  
♚e6




3271



E. Szentgyörgyi, 1936

3271



g6, e6  
e7

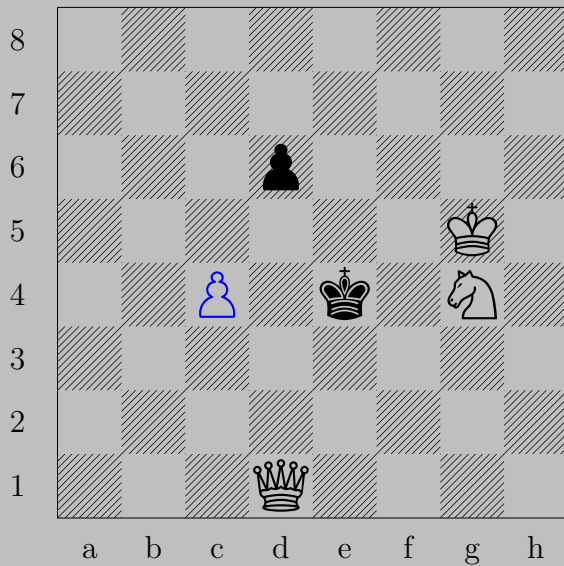


3272



E. Szentgyörgyi, 1936

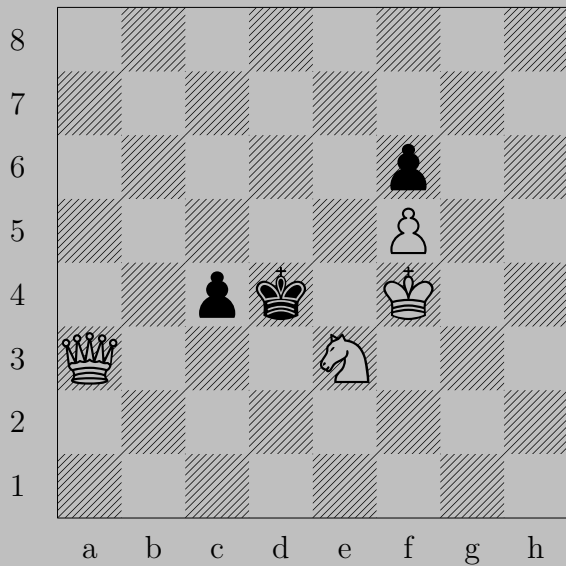
3272



♙c4, ♗d5

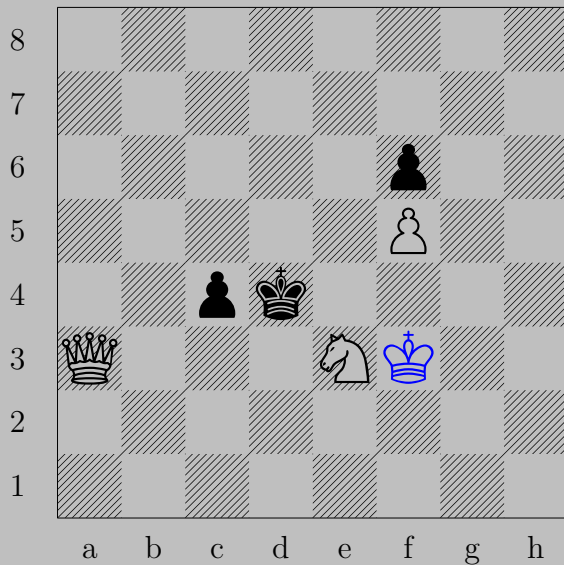
♙x♙d5

3273



E. Szentgyörgyi, 1936

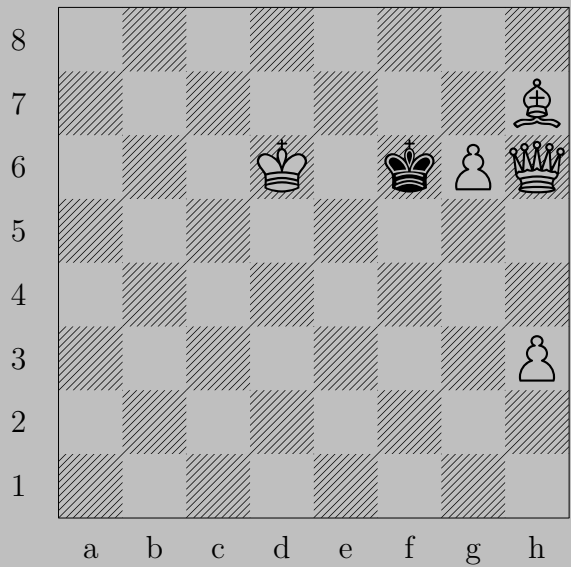
3273



♔f3

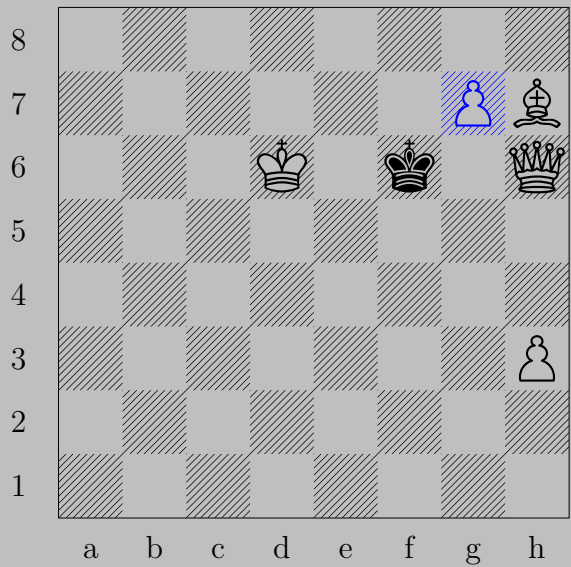
If ♖c3, ♕d6. if ♔e5, ♕c5.

3274



E. Szentgyörgyi, 1936

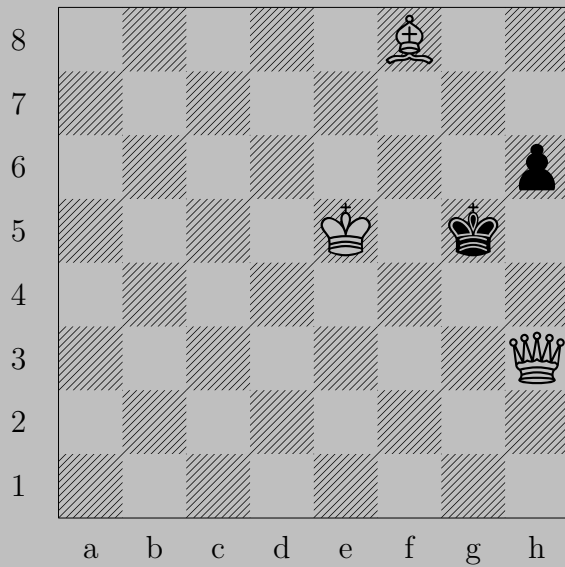
3274



♠g7+, ♔f7

♠g8(♚)

3275



E. Szentgyörgyi, 1936

3275

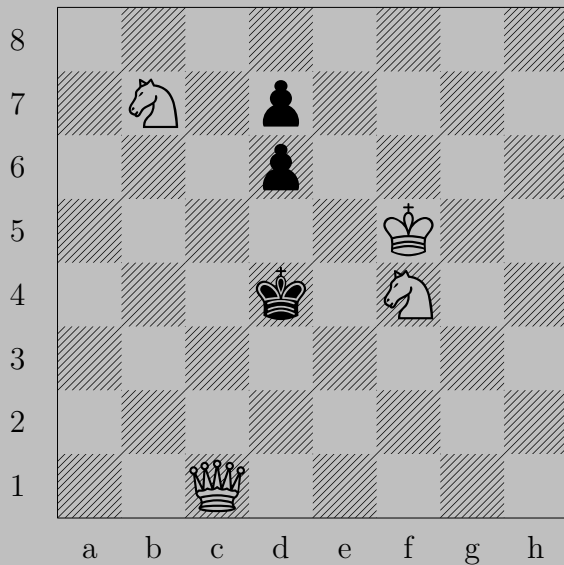


♙f3

If ♖h5, ♙g3. If ♔g6, ♙f5. If ♔h4, ♕e7.

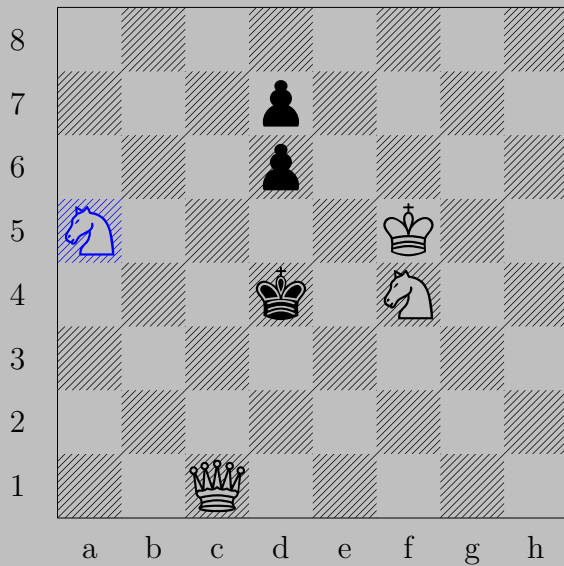


3276



E. Szentgyörgyi, 1936

3276



♞a5, ♖d5

♞b3

3277



E. Szentgyörgyi, 1936

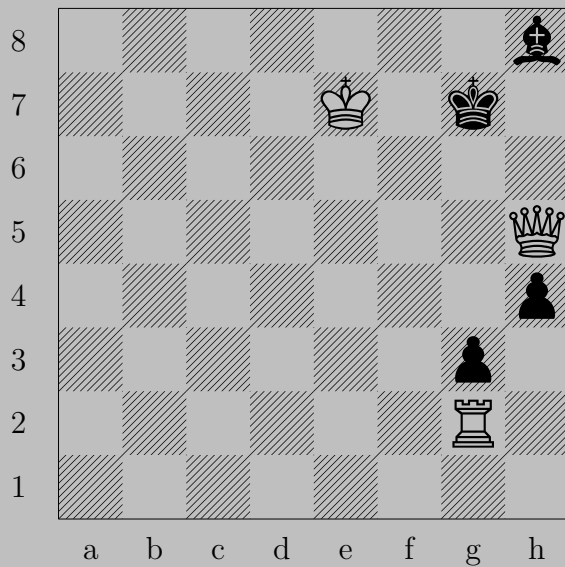
3277



$\text{♟e7}$

If  $\text{♞e6}$ ,  $\text{♟e8}$ ( $\text{♞}$ ). If  $\text{♞e4}$ ,  $\text{♞e2}$ .

3278



E. Szentgyörgyi, 1936

3278



$\text{Rg1}$

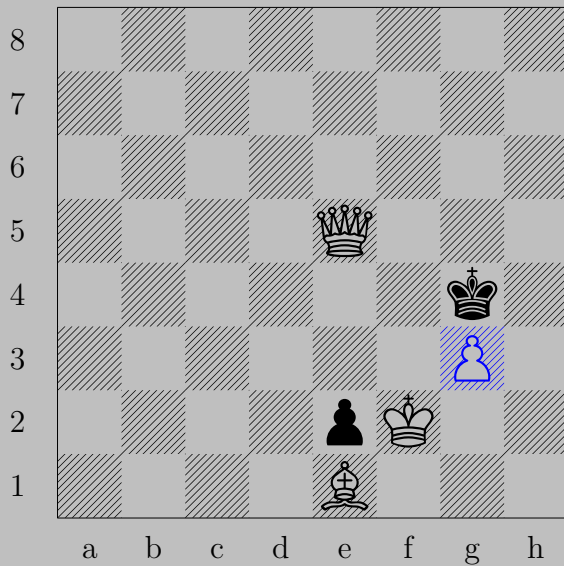
If  $\text{Kg8}$ ,  $\text{Qf7}$ . If  $\text{Pg2}$ ,  $\text{Rxg2}$ . If  $\text{Ph3}$ ,  $\text{Rxg3}$ .

3279



E. Szentgyörgyi, 1936

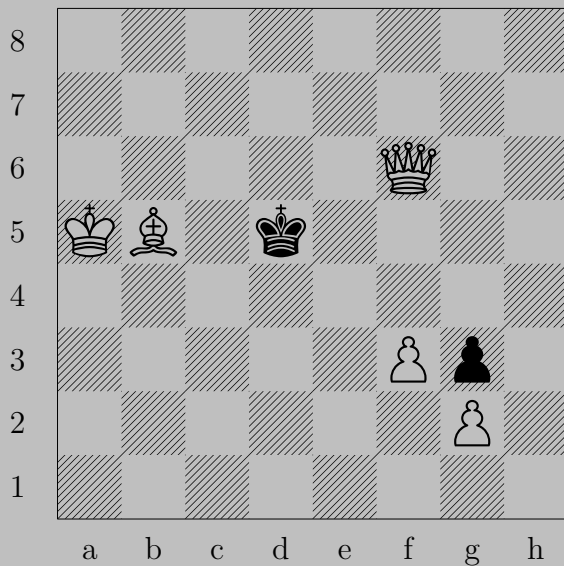
3279



♔g3, ♕h3  
♕h5

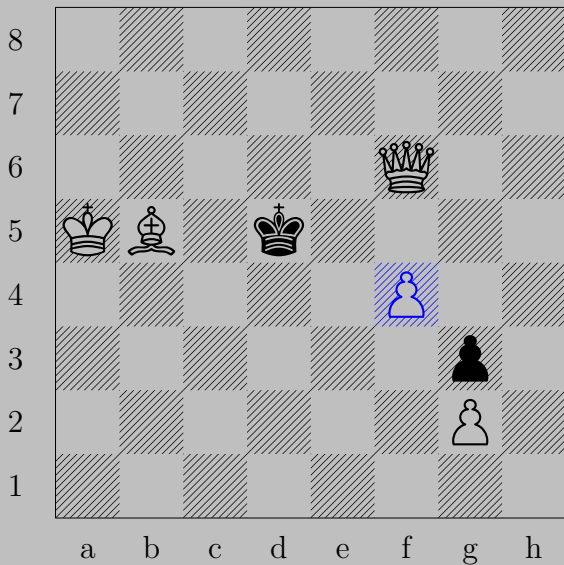


3280



E. Szentgyörgyi, 1936

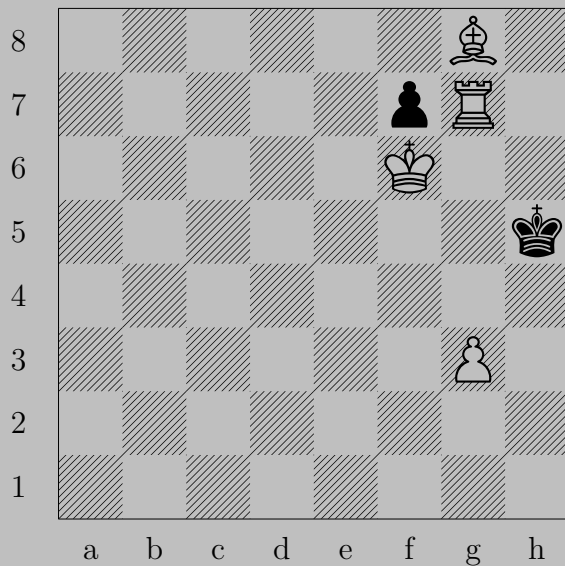
3280



♖f4, ♖c5 or ♖e4

♑e5

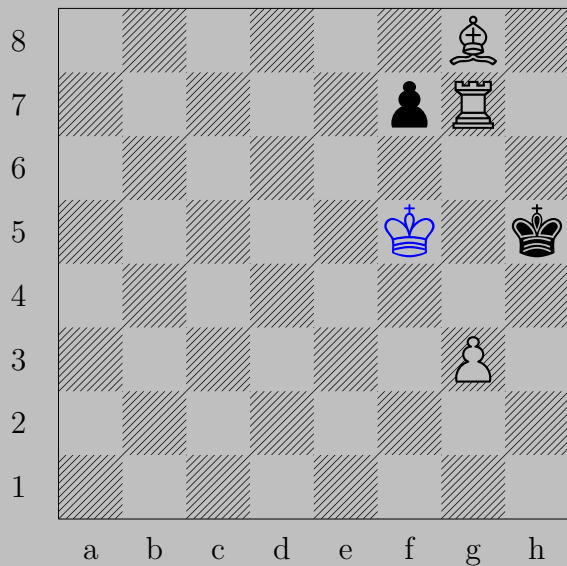
3281



E. Szentgyörgyi, 1936

See [3283](#)

3281



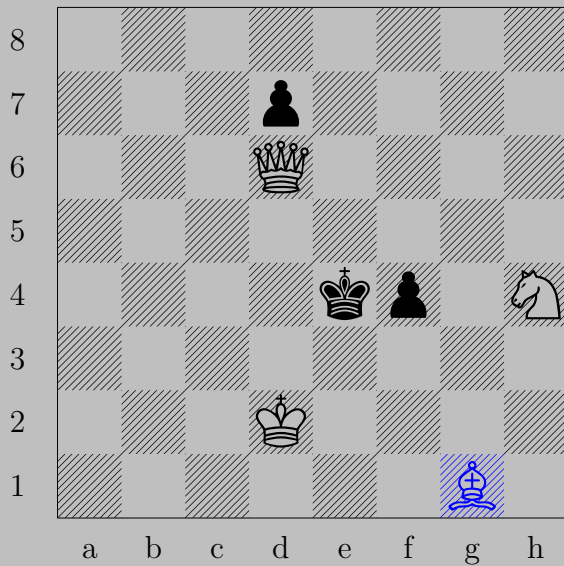
♔f5, ♔h6 or ♖f6  
♖h7

3282



E. Szentgyörgyi, 1936

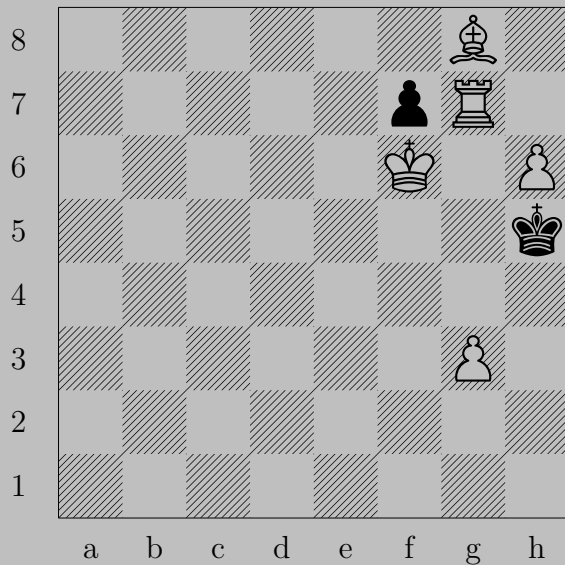
3282



♔g1, ♠f3

♚d4

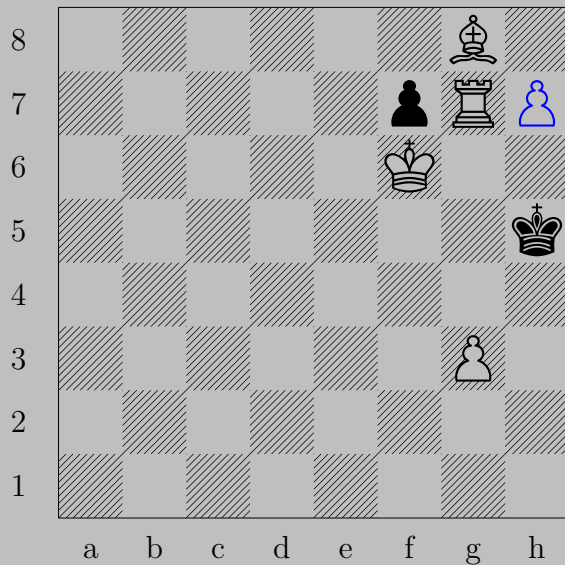
3283



E. Szentgyörgyi, 1936

See [3281](#)

3283



♖h7, ♔h6

♖h8(♔)



3284



E. Szentgyörgyi, 1936

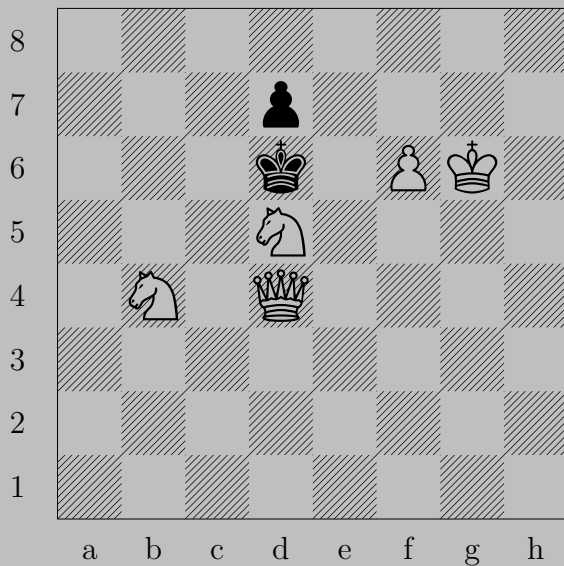
3284



♔a3, ♖d3 or ♔b1

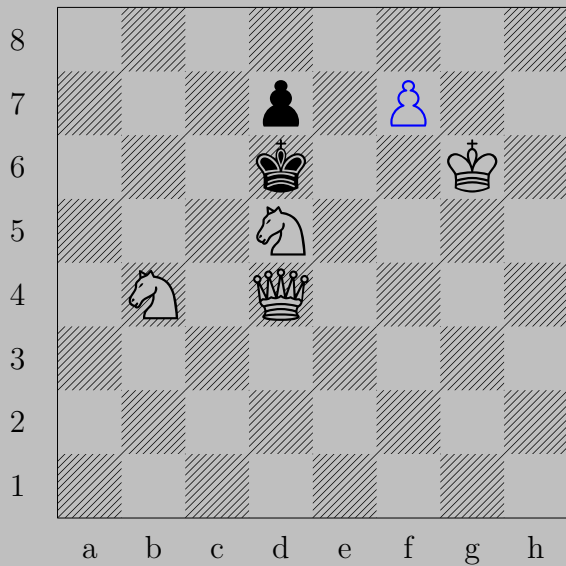
♚b2

3285



E. Szentgyörgyi, 1936

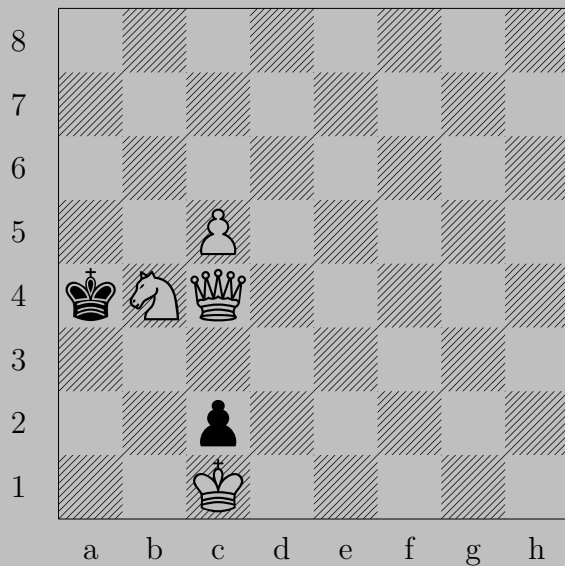
3285



♙f7, ♔e6

♚f6

3286



E. Szentgyörgyi, 1936

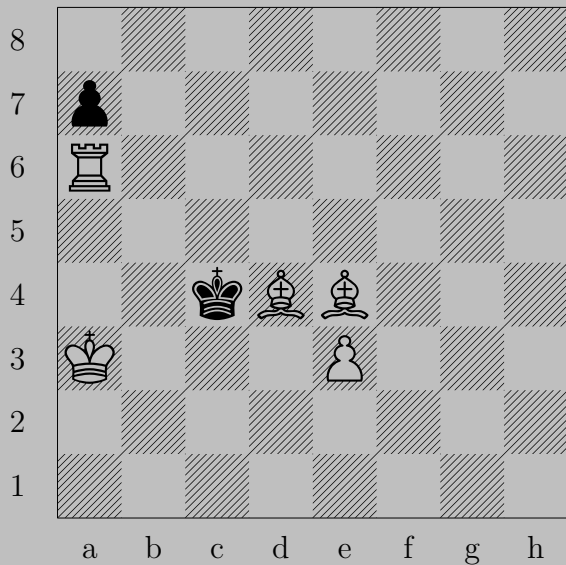
3286



♔×c2

If ♔a3, ♚b3. If ♔a5, ♞c6.

3287



E. Szentgyörgyi, 1936

3287



♖a5, ♗a6

♖c5





3288



♔f3

If ♖h4, ♔g4. If ♙g6, ♙f6.

3289



E. Szentgyörgyi, 1936

3289



♔h3, ♖h4  
♖f1

3290



E. Szentgyörgyi, 1936

3290



♖f2

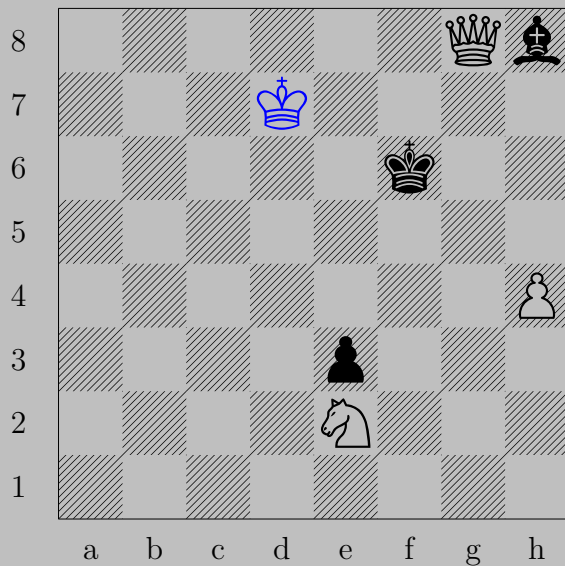
If ♔e5, ♕g3. If ♔g5, ♕e3.

3291



E. Szentgyörgyi, 1936

3291

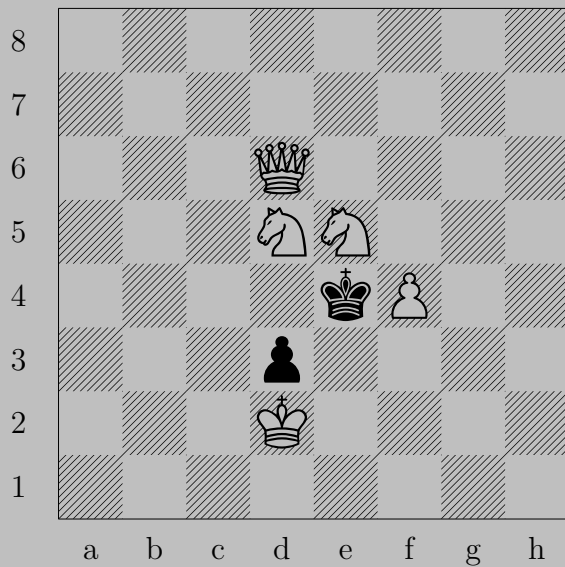


♔d7, ♕e5 or ♔f5 or ♘g7

♕e6

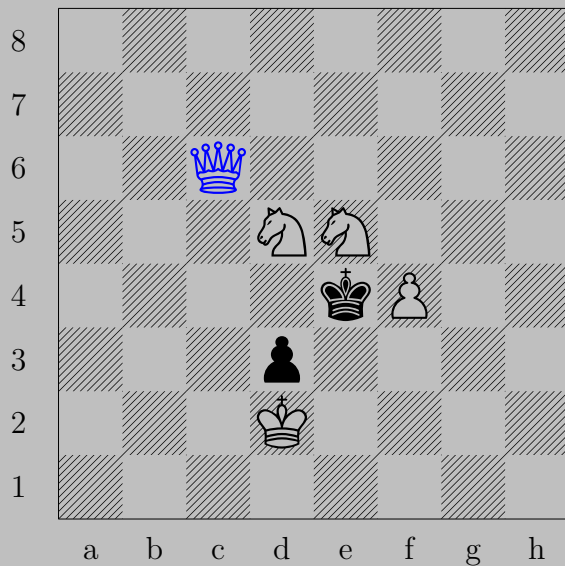


3292



E. Szentgyörgyi, 1936

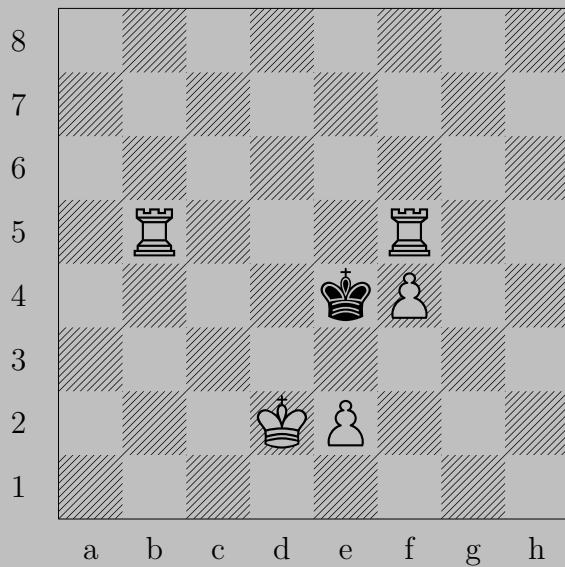
3292



♙c6

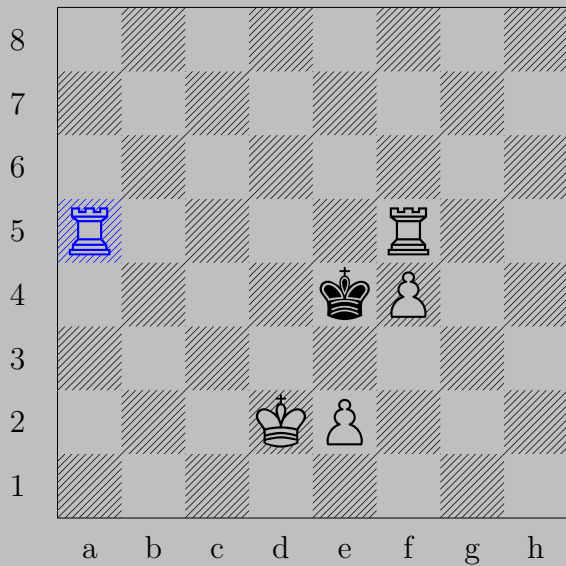
If ♔d4, ♙c4. If ♔f5, ♙g6.

3293



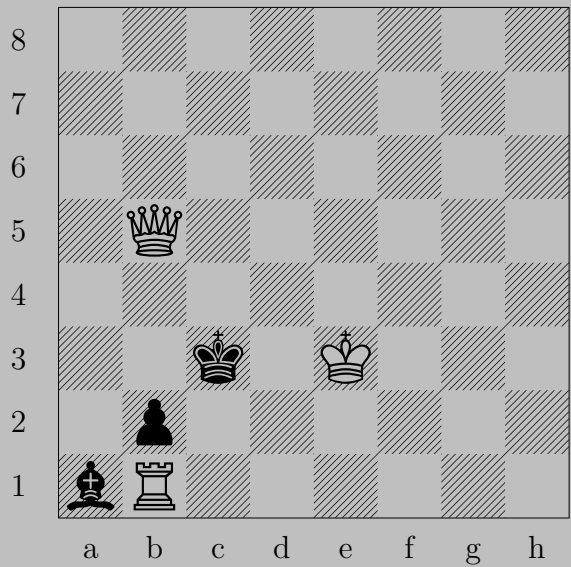
E. Szentgyörgyi, 1936

3293



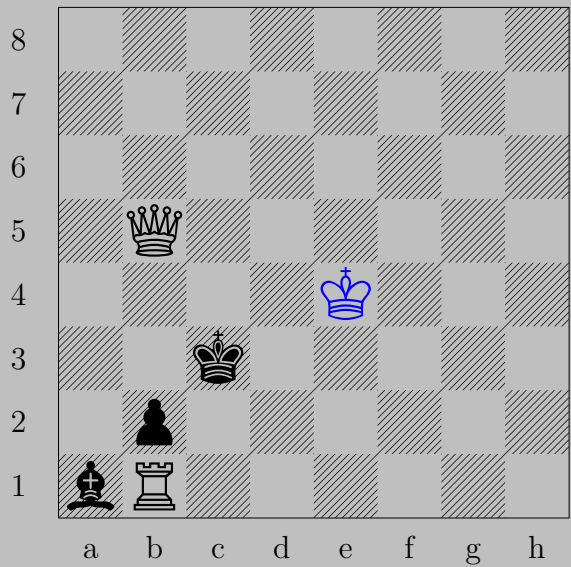
♖a5, ♔d4  
♖a4

3294



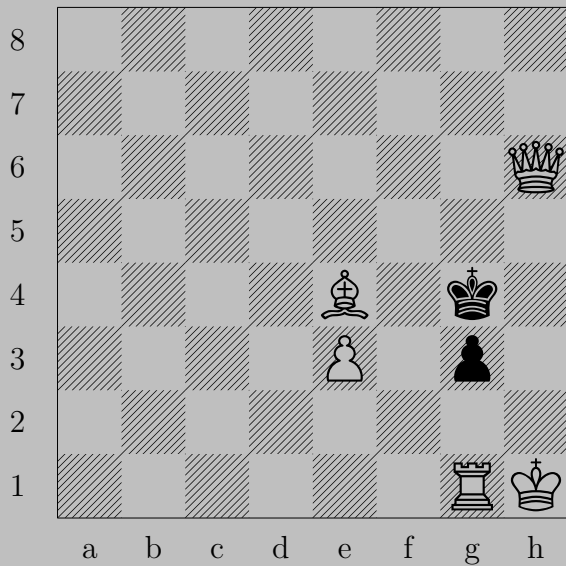
E. Szentgyörgyi, 1936

3294



♔e4, ♕c2 or ♔d2  
♕d3

3295



E. Szentgyörgyi, 1936

3295

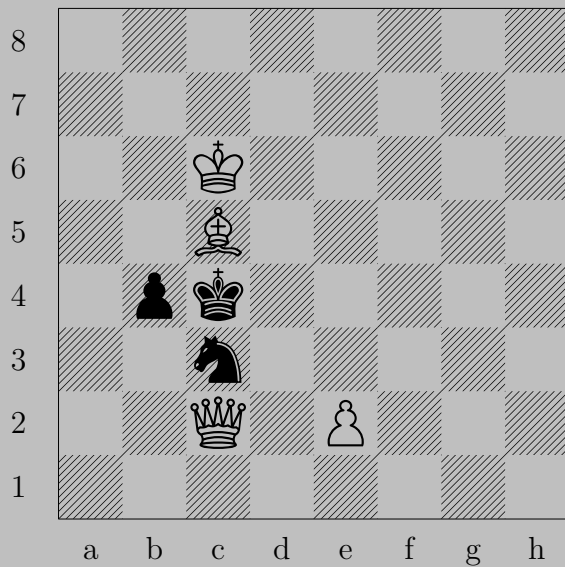


h8

If g2+, xg2. If g5, xg3.



3296



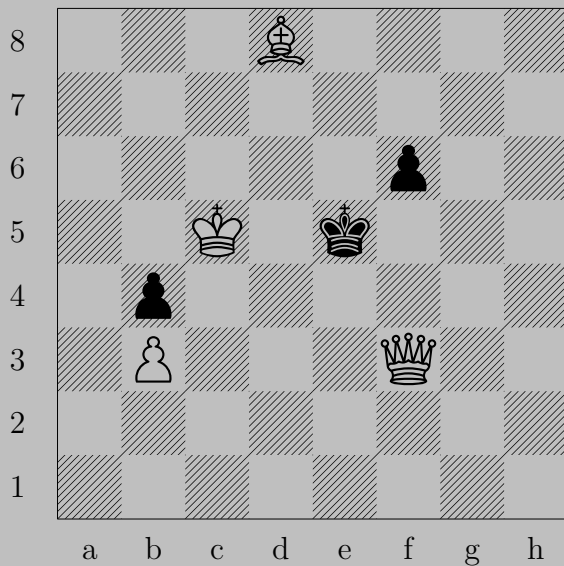
E. Szentgyörgyi, 1936

3296



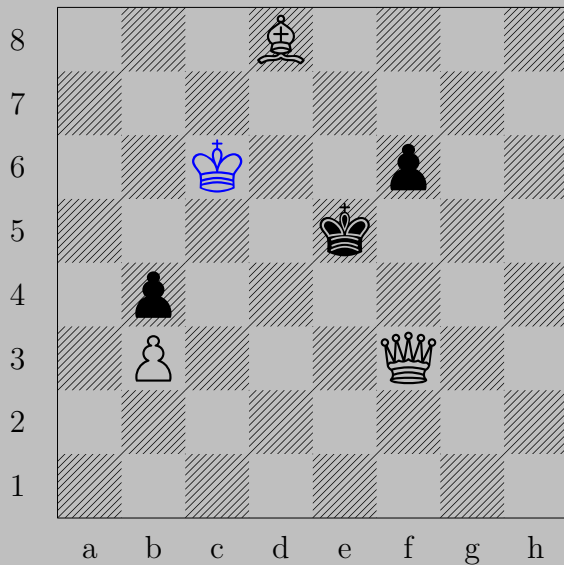
♙d6, ♖b3 or ♔d4  
♙d3

3297



E. Szentgyörgyi, 1936

3297



♚c6

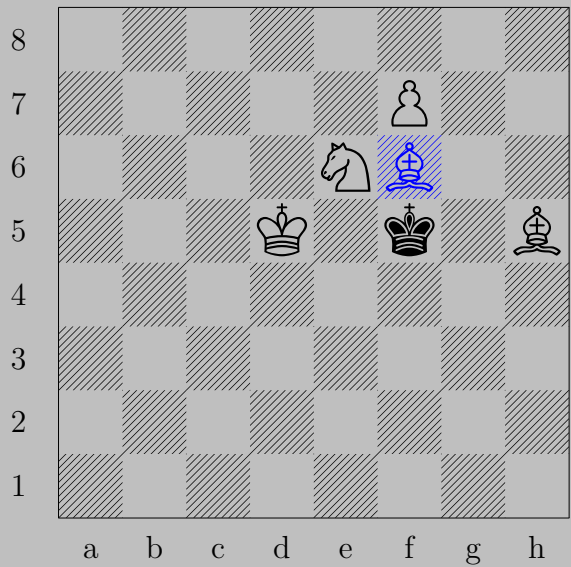
If ♜f5, ♚e3. If ♚e6, ♚d5.

3298



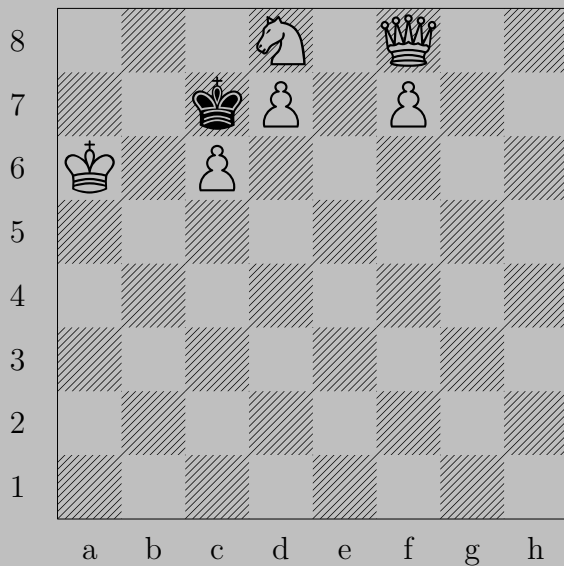
E. Szentgyörgyi, 1936

3298



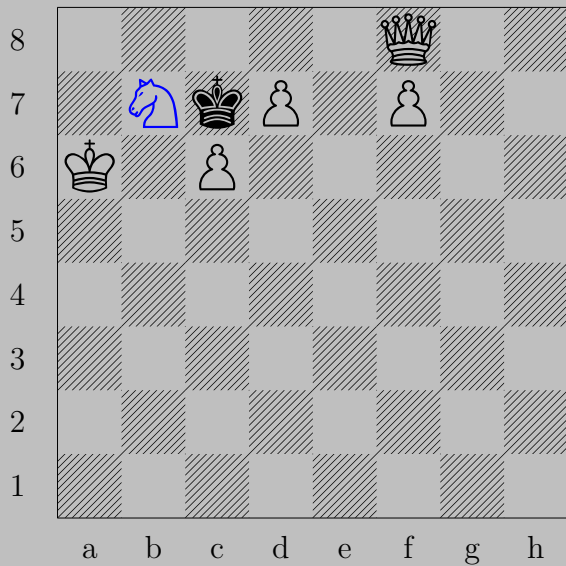
♔×f6, ♔×f6  
♕f8(♔)

3299



E. Szentgyörgyi, 1936

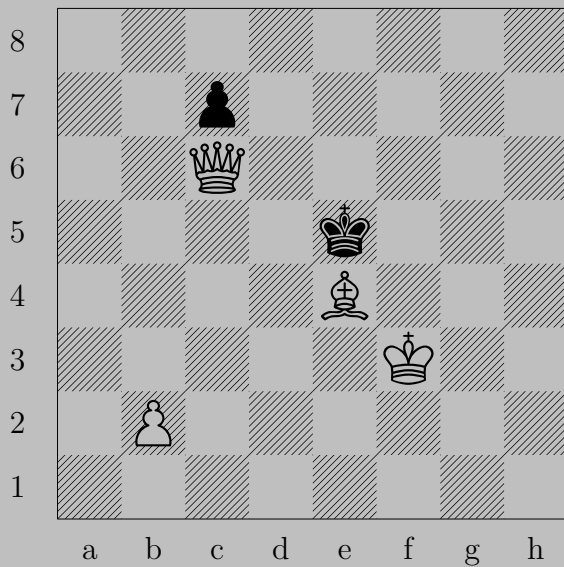
3299



$\text{♞b7, ♔xc6}$   
 $\text{♔d6}$

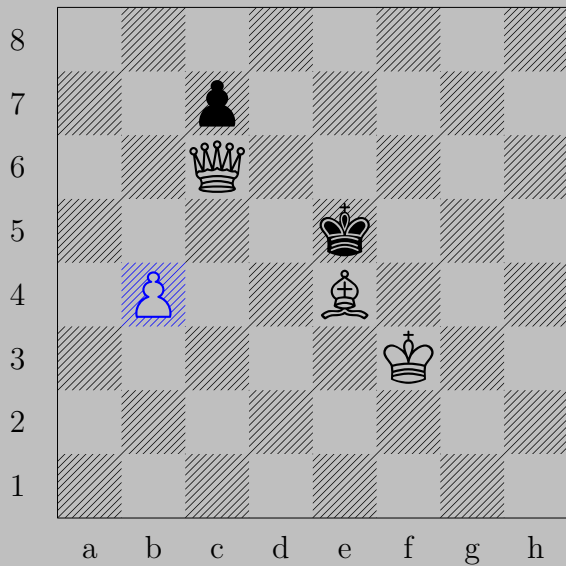


3300



E. Szentgyörgyi, 1936

3300



♙b4, ♔d4  
♚c5