

Chess Puzzles

3101-3200

Mate in Two

White to Move

László Polgár

Links

3101	3102	3103	3104	3105	3106	3107	3108	3109	3110
3111	3112	3113	3114	3115	3116	3117	3118	3119	3120
3121	3122	3123	3124	3125	3126	3127	3128	3129	3130
3131	3132	3133	3134	3135	3136	3137	3138	3139	3140
3141	3142	3143	3144	3145	3146	3147	3148	3149	3150
3151	3152	3153	3154	3155	3156	3157	3158	3159	3160
3161	3162	3163	3164	3165	3166	3167	3168	3169	3170
3171	3172	3173	3174	3175	3176	3177	3178	3179	3180
3181	3182	3183	3184	3185	3186	3187	3188	3189	3190
3191	3192	3193	3194	3195	3196	3197	3198	3199	3200

3101



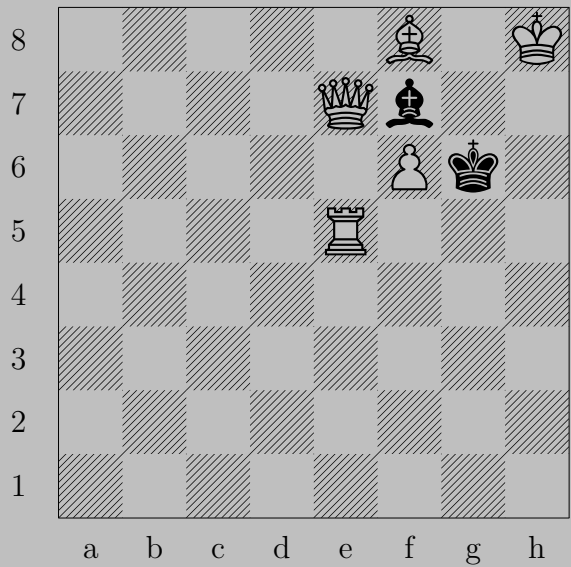
E. Szentgyörgyi, 1933

3101



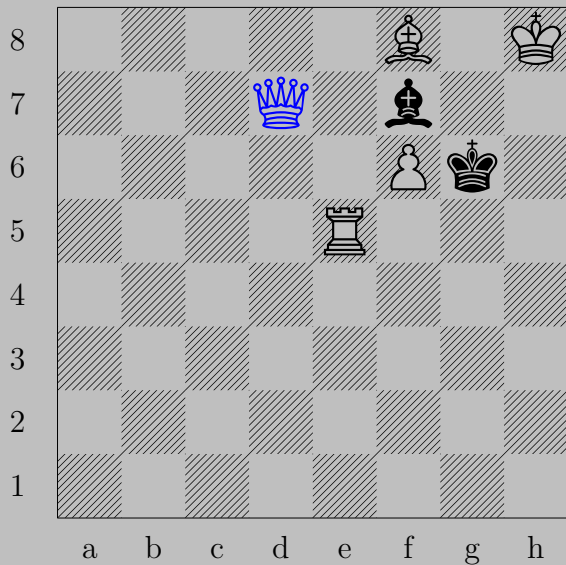
♔d3, ♖f3
♞d6

3102



E. Szentgyörgyi, 1933

3102

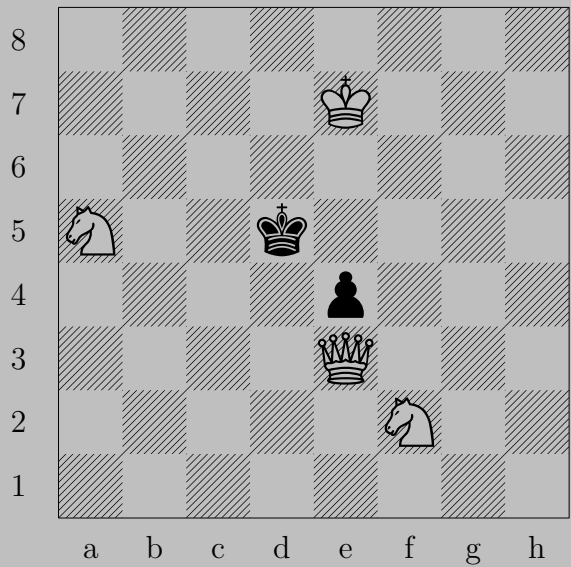


♙d7

If ♙×f6, ♙f5.

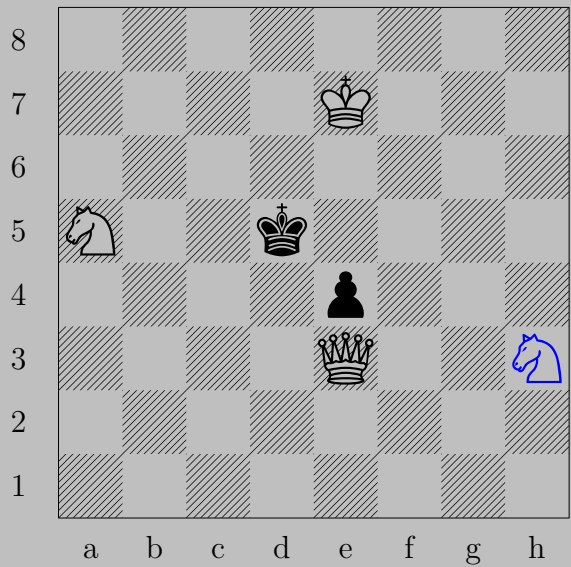
Otherwise, ♙g7.

3103

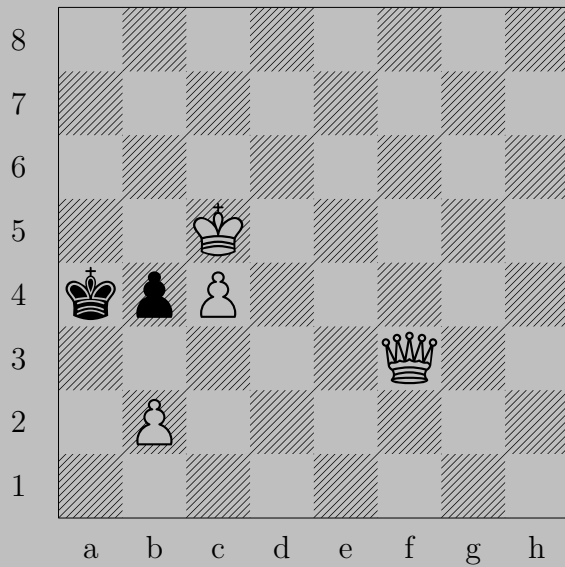


E. Szentgyörgyi, 1933

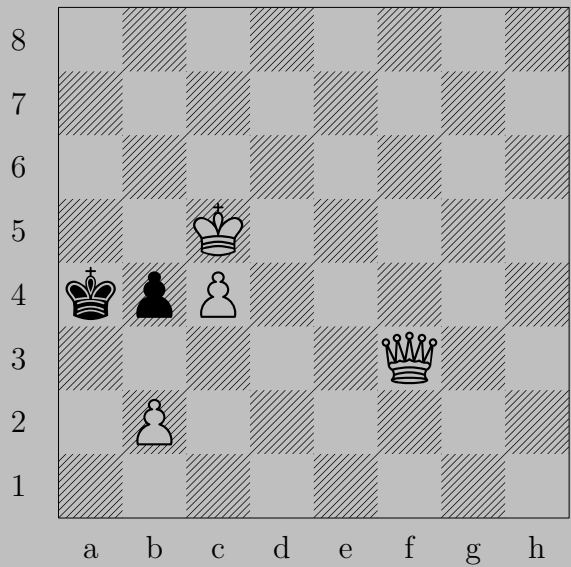
3103



h3, e5
c5



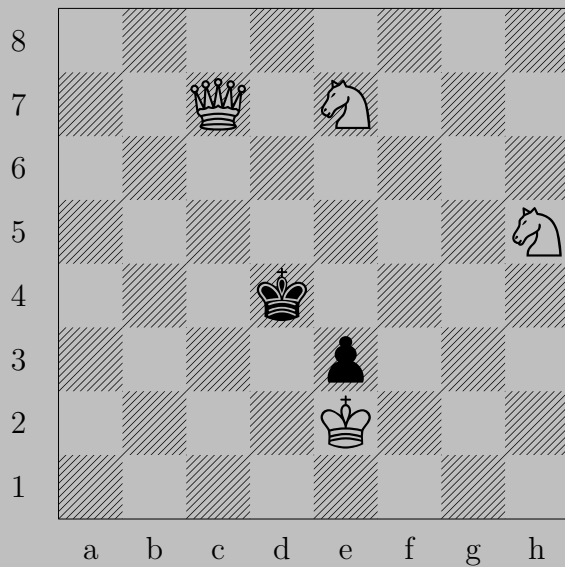
3104



♙d1+, ♔a5 or ♖b3

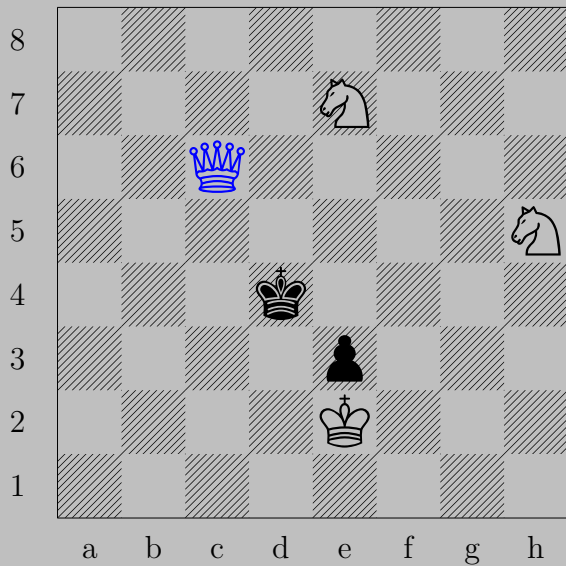
♙a1

3105



E. Szentgyörgyi, 1933

3105



♙c6, ♚e5
♙d5

3106



E. Szentgyörgyi, 1933

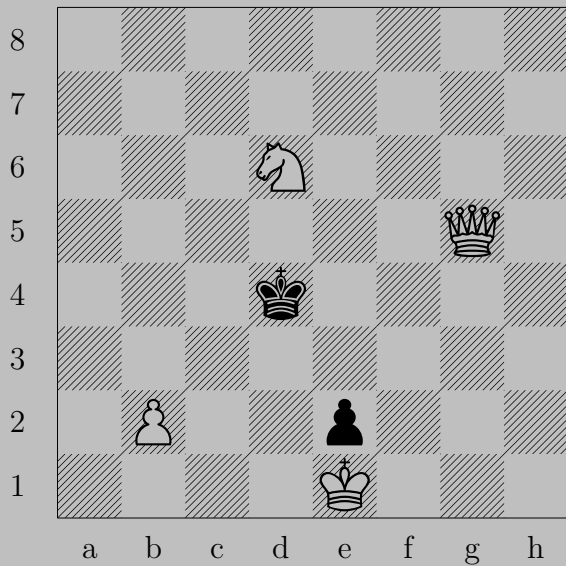
3106



♔×h2

If ♘×a6, ♔c7. If ♔×a6, ♔a2.

3107

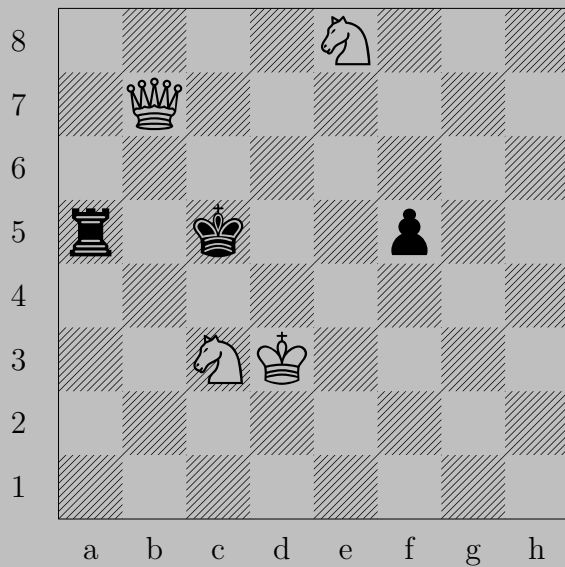


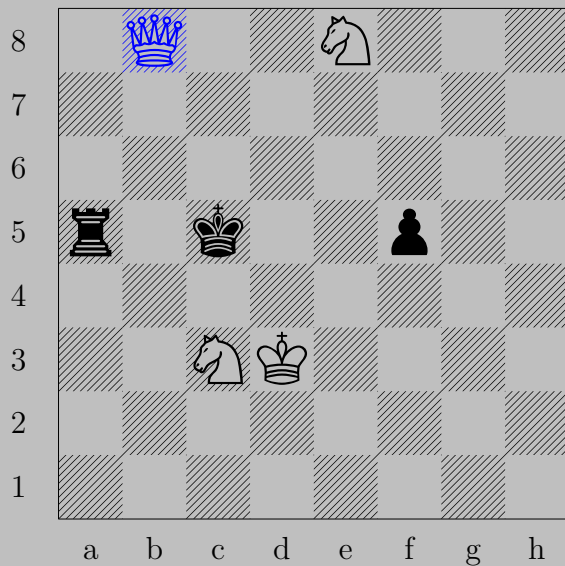
E. Szentgyörgyi, 1933

3107



♙f5, ♚e3
♙e4



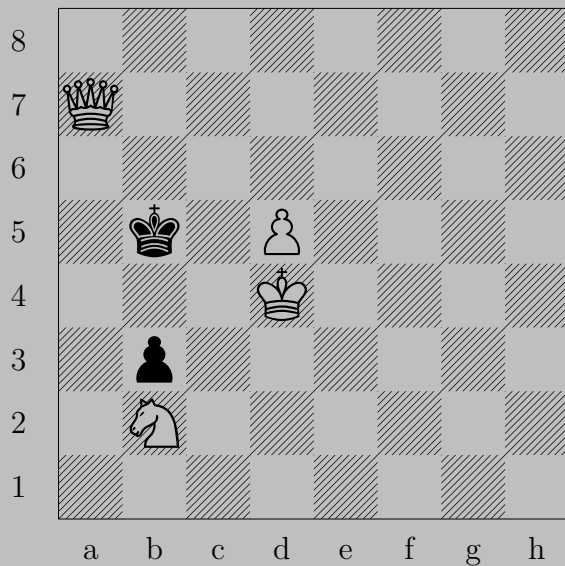


♙b8

If ♖a6, ♙b5. If ♔c6, ♙c7.

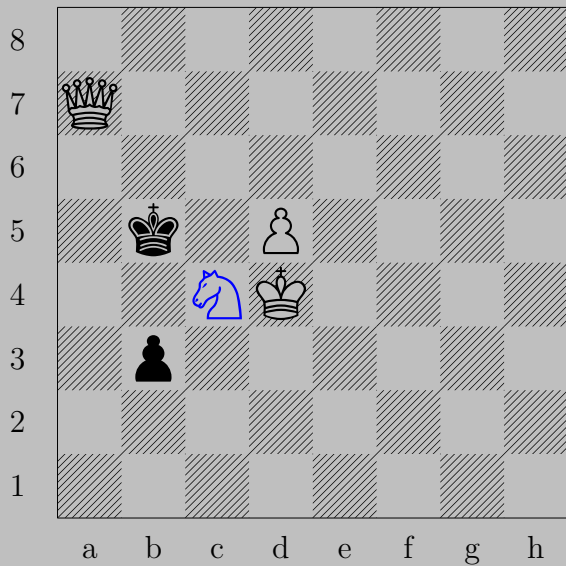
Otherwise, ♙d6

3109



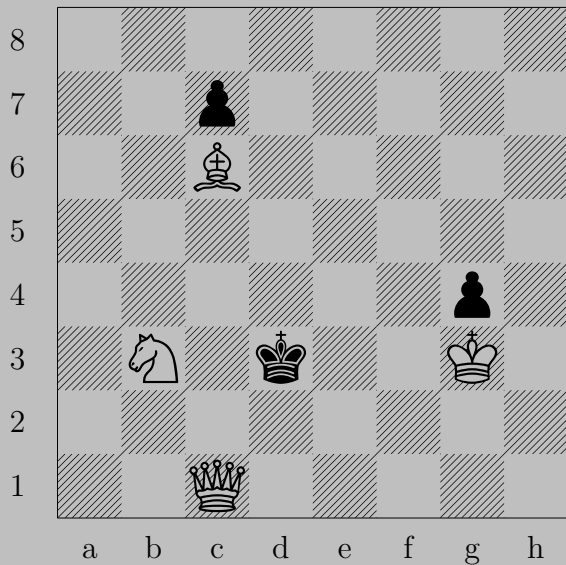
E. Szentgyörgyi, 1933

3109



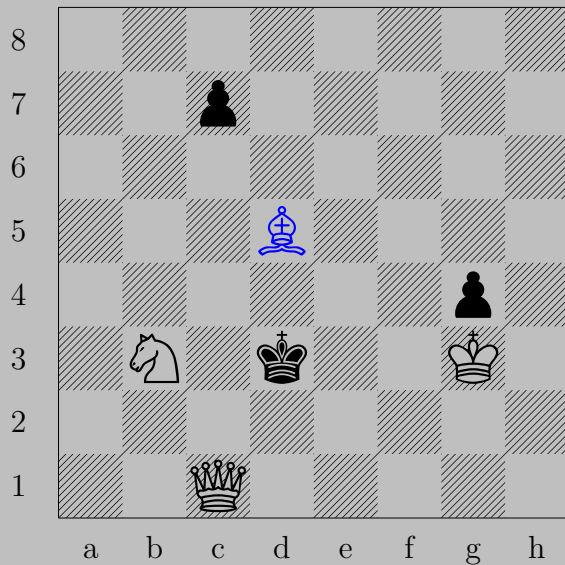
♞c4 , ♔b4 or ♘b2
 ♔a5

3110



E. Szentgyörgyi, 1933

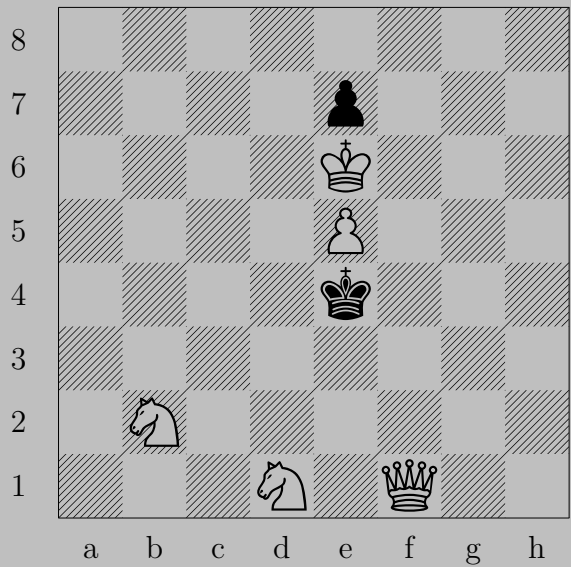
3110



♞d5

If ♔e2, ♞c4. If ♖c6 or ♖c5, ♔d2.

3111



E. Szentgyörgyi, 1933

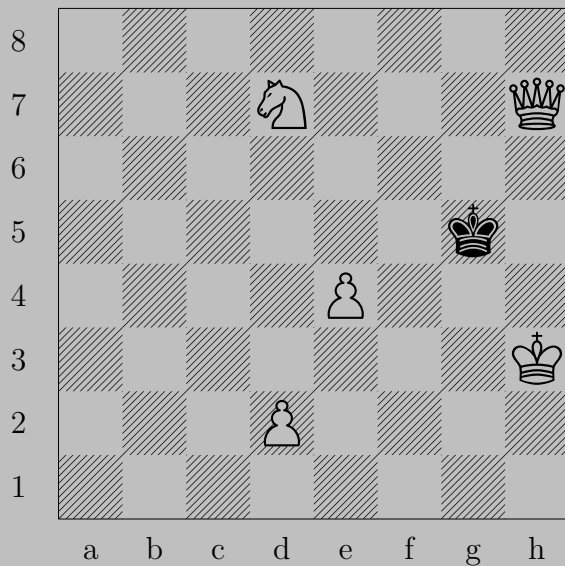
3111



♙g2+

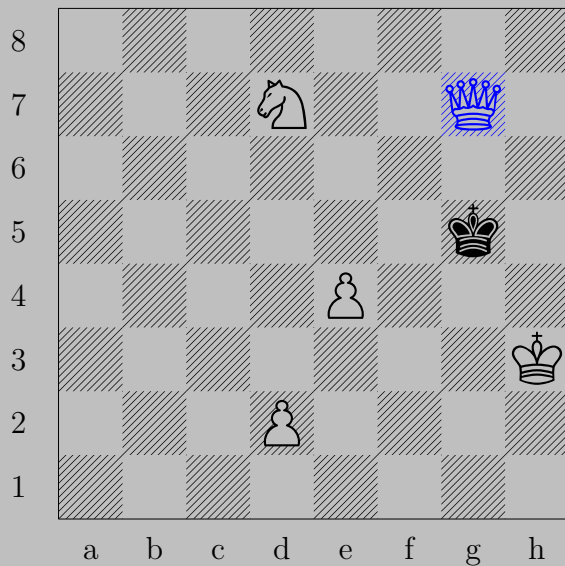
If ♔d4, ♙d5. If ♔f4, ♘d3.

3112



E. Szentgyörgyi, 1933

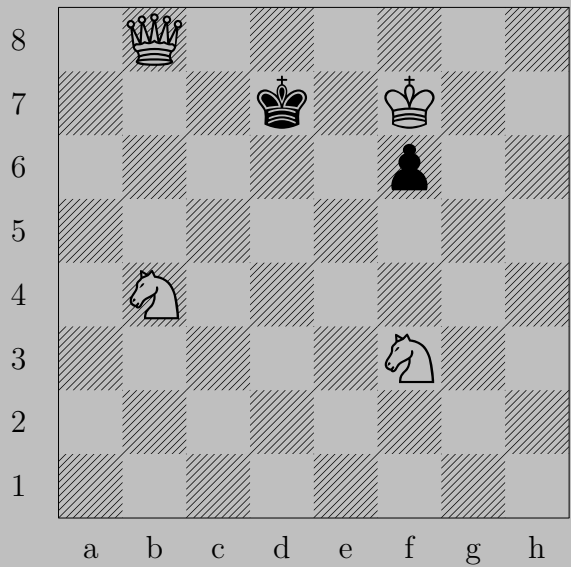
3112



♔g7+

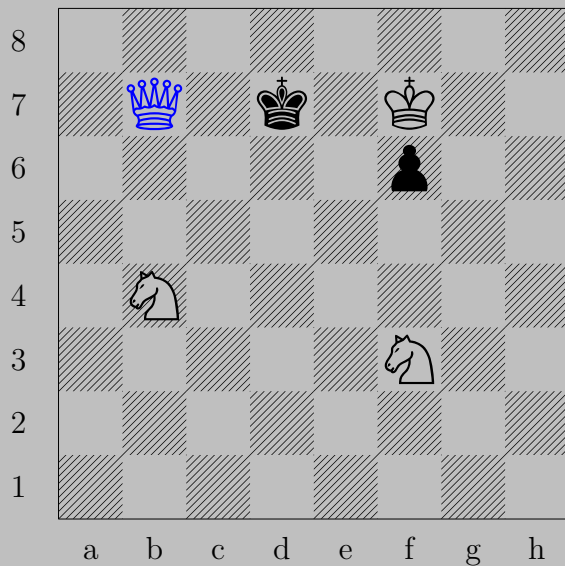
If ♔f4, ♔g4. If ♔h5, ♞f6.

3113



E. Szentgyörgyi, 1933

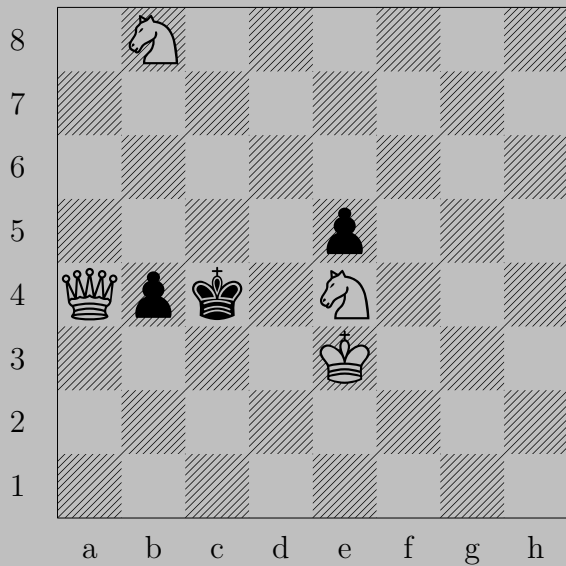
3113



♔b7+

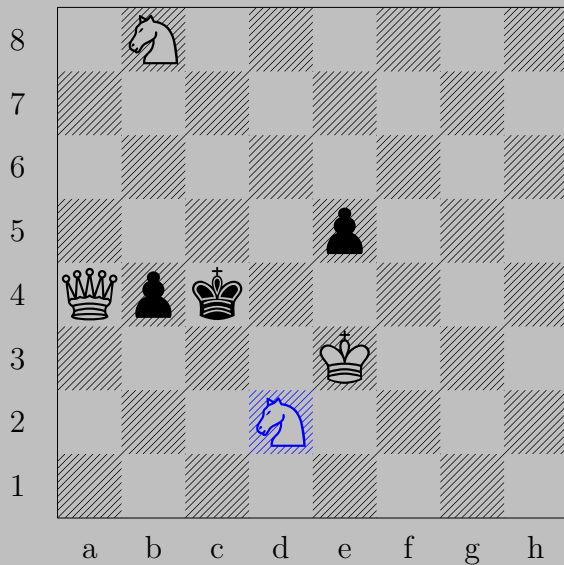
If ♔d8, ♘c6. If ♔d6, ♔d6.

3114



E. Szentgyörgyi, 1933

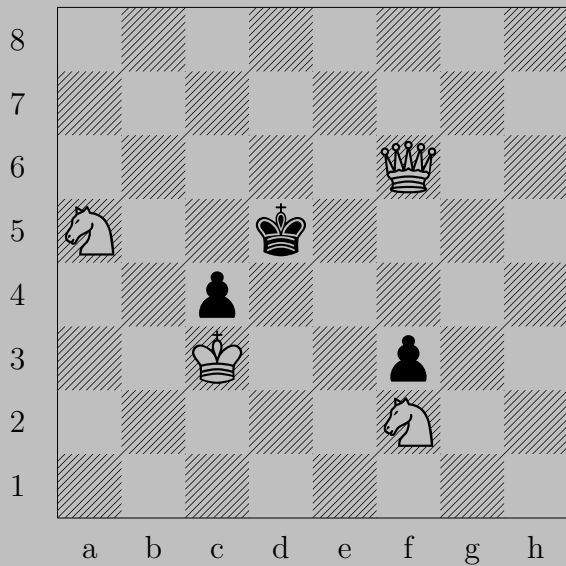
3114



♞d2+

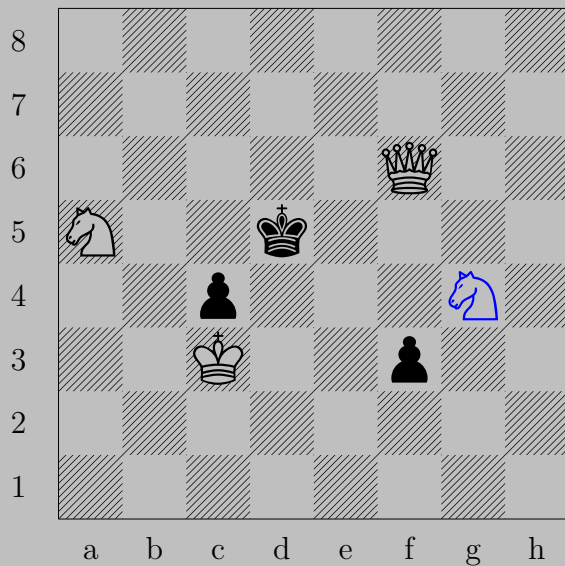
If ♔c3 , ♕b3 . If ♔c5 or ♔d5 , ♕c6 .

3115



E. Szentgyörgyi, 1933

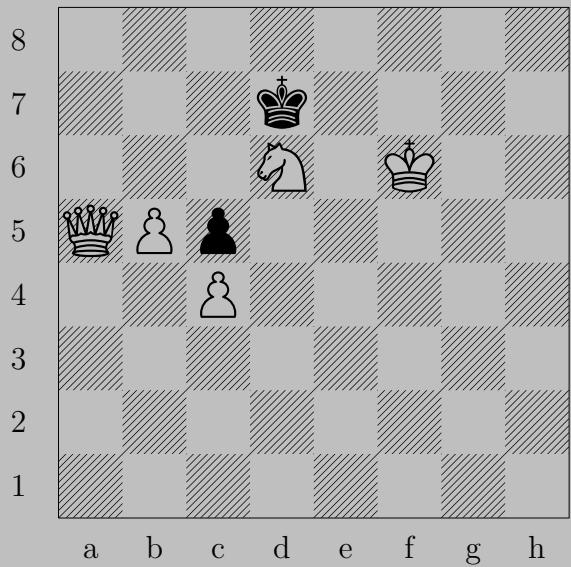
3115



Ng4

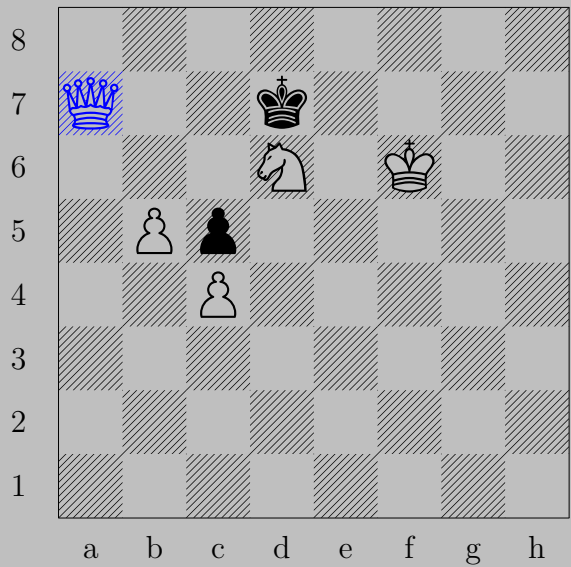
If Kc5 , Qc6 . If Ke4 , Qd4 . If Bf2 , Qe5 .

3116



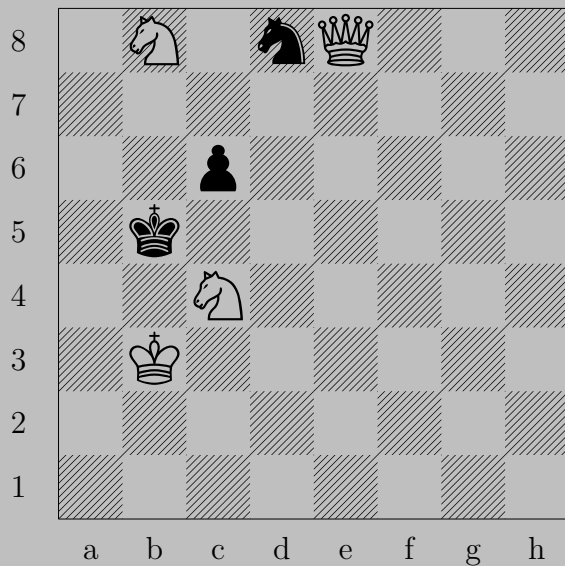
E. Szentgyörgyi, 1933

3116



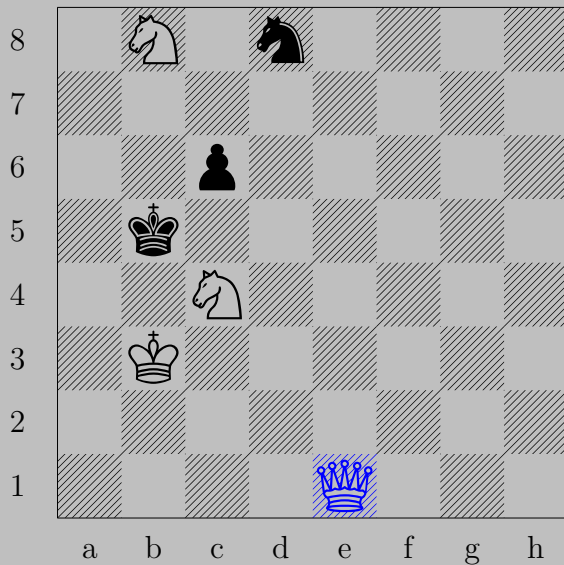
♔a7+, ♔×d6 or ♔d8
♔e7

3117



E. Szentgyörgyi, 1933

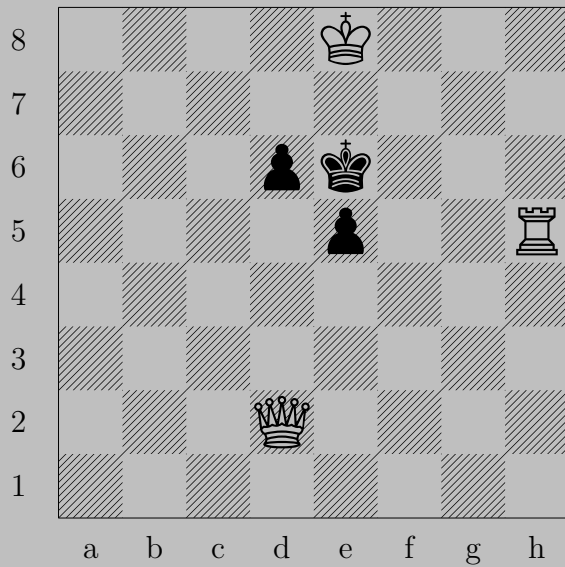
3117



♙e1

If ♙c5, ♙e5. If ♖c5, ♙a5.

Otherwise, ♙b4.



3118



♙a2+

If ♖d5, ♙a6. If ♔f6, ♙f7.

3119



E. Szentgyörgyi, 1933

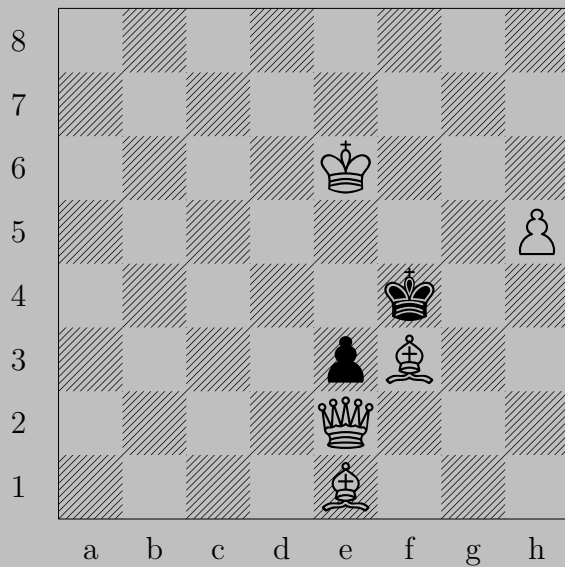
3119



♔g7

If ♚e4, ♔e5. If ♚e6, ♔g6.

3120



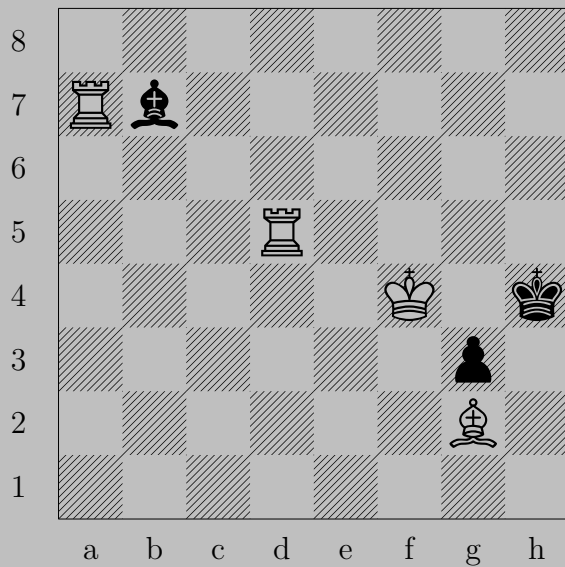
E. Szentgyörgyi, 1933

3120



♔g2, ♖e2
♚d2

3121



E. Szentgyörgyi, 1933

3121

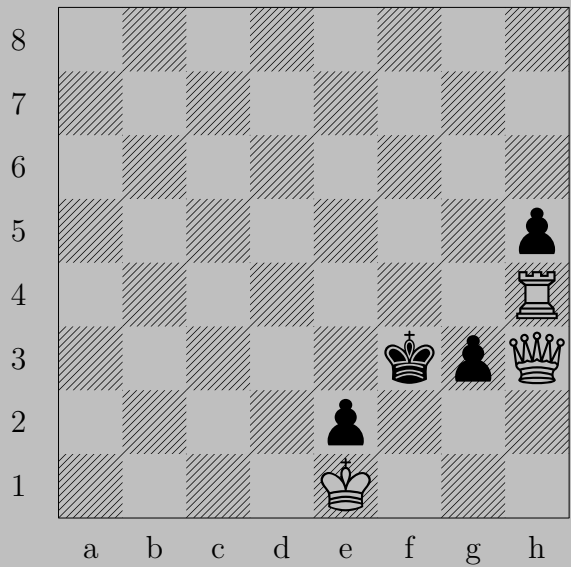


♔f3

If ♔×d5, ♖h7.

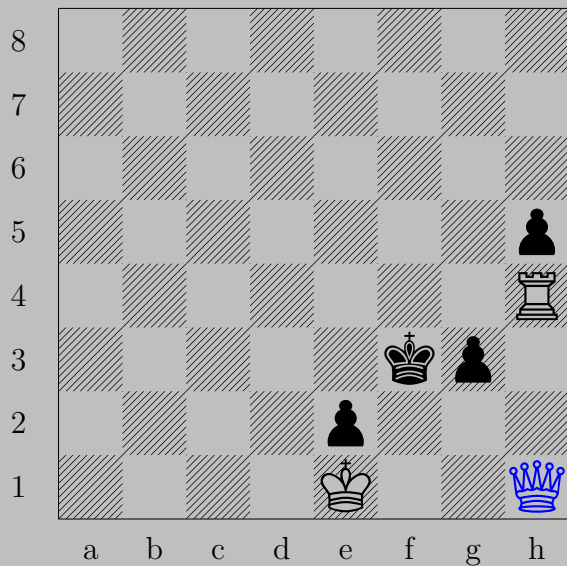
Otherwise, ♖h5.

3122



E. Szentgyörgyi, 1933

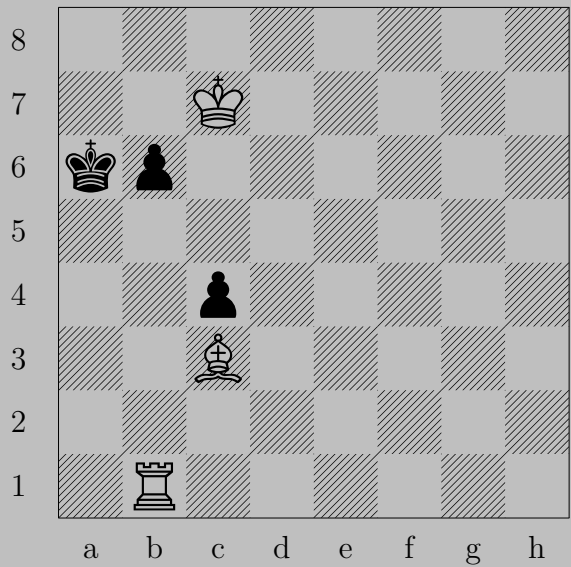
3122



♔h1+

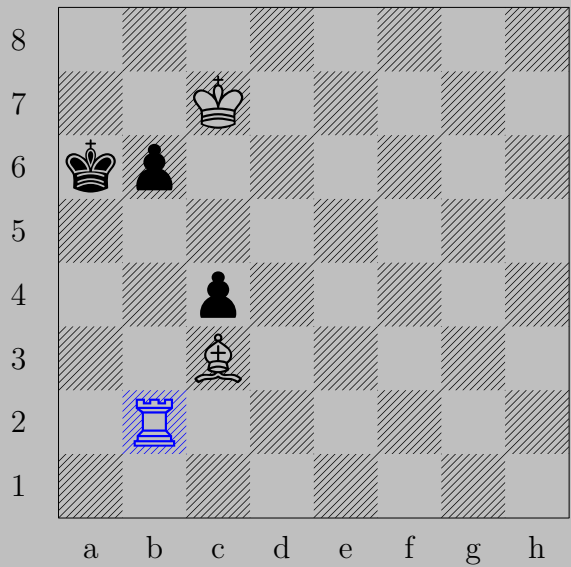
If ♖g2, ♔h3. If ♔e3, ♔e4.

3123



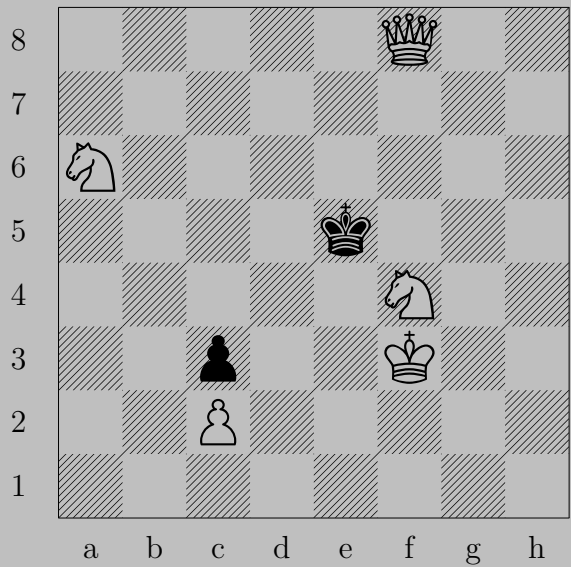
E. Szentgyörgyi, 1933

3123



♖b2, ♔a7 or ♗b5
♖a2

3124



E. Szentgyörgyi, 1933

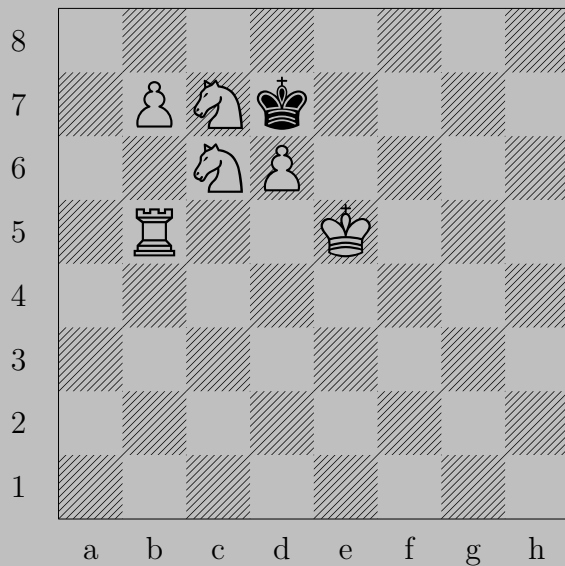
3124



♔f7

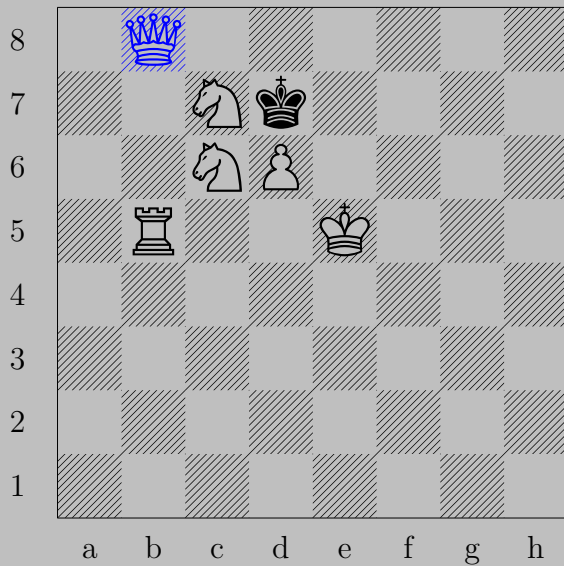
If ♙d4, ♔d5. If ♙d6, ♔e6.

3125



E. Szentgyörgyi, 1933

3125



$\text{♞b8}(\text{♞}), \text{♞xc6}$
 ♞e8

3126



E. Szentgyörgyi, 1927

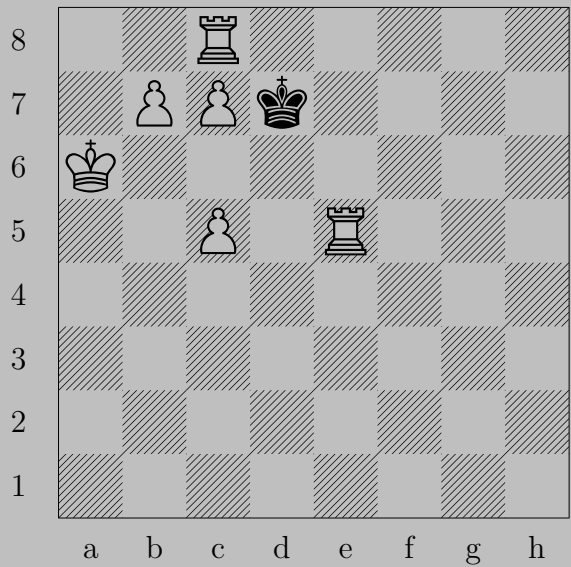
3126



♘d2

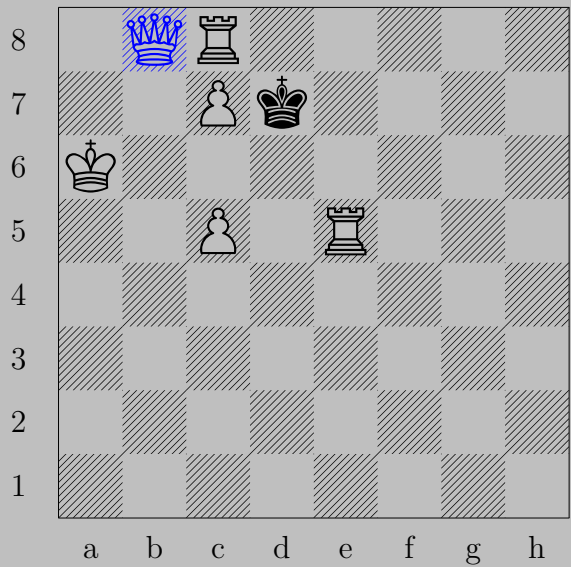
If ♔g3, ♘e1. If ♔h5, ♘f5.

3127



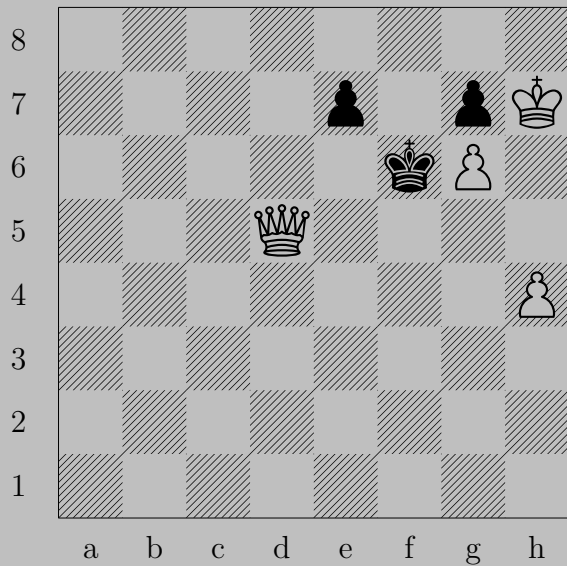
E. Szentgyörgyi, 1927

3127



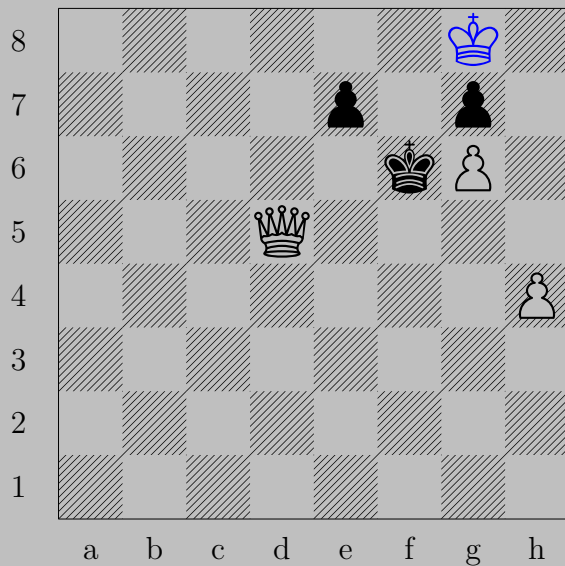
♖b8(♚), ♔c6
♚b5

3128



E. Szentgyörgyi, 1927

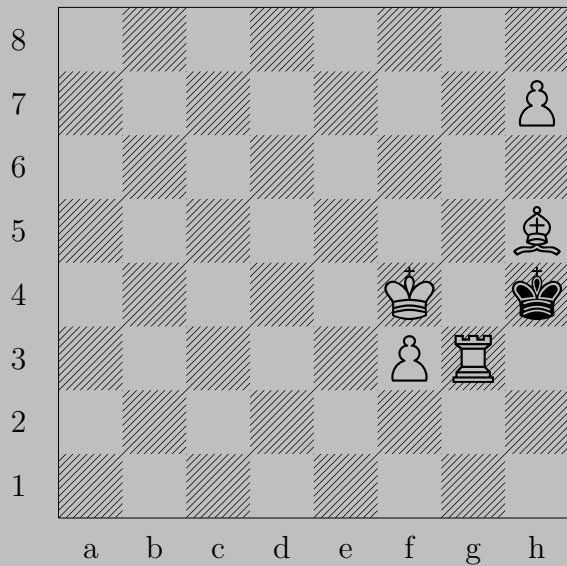
3128



♔g8

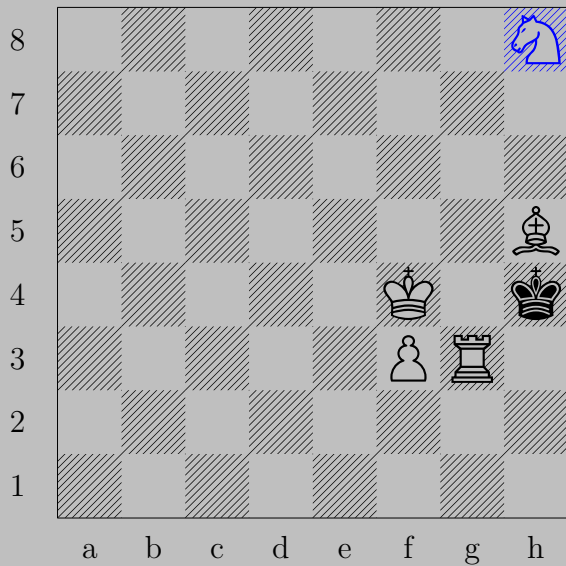
If ♔xg6 or ♜e6 , ♞g5 . If ♜e5 , ♞f7 .

3129



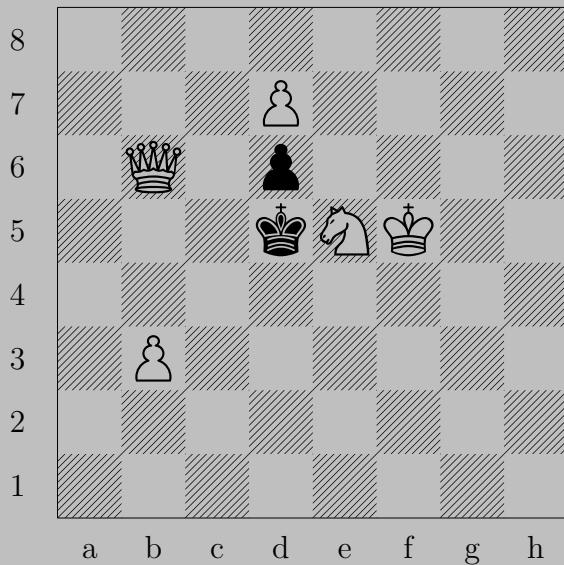
E. Szentgyörgyi, 1927

3129



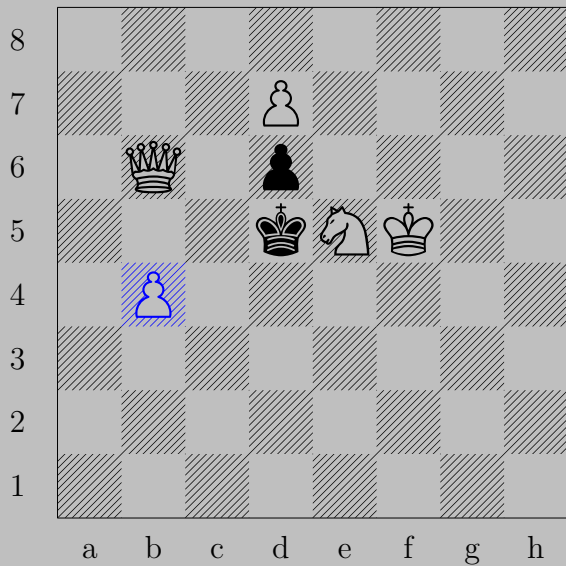
♞h8(♘), ♔xh5
♖h3

3130



E. Szentgyörgyi, 1927

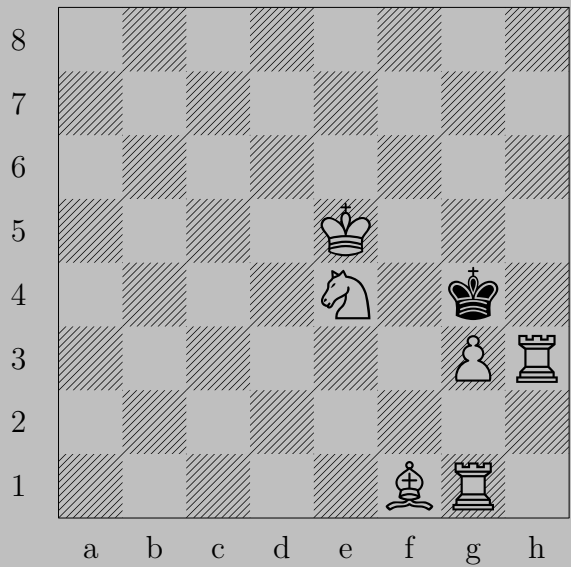
3130



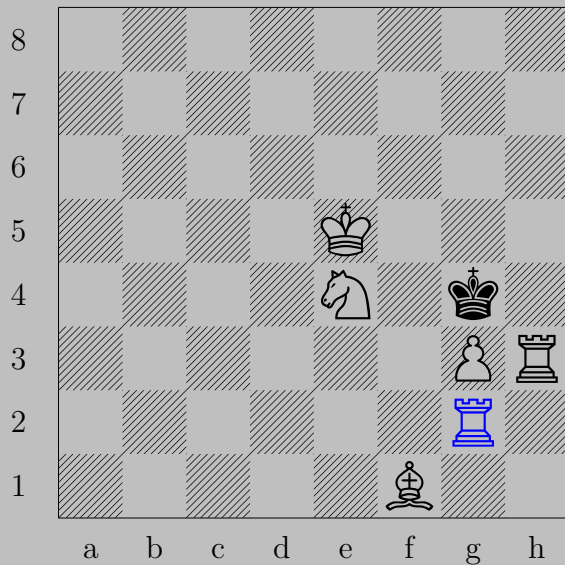
♔b4, ♖e5

♚c5

3131



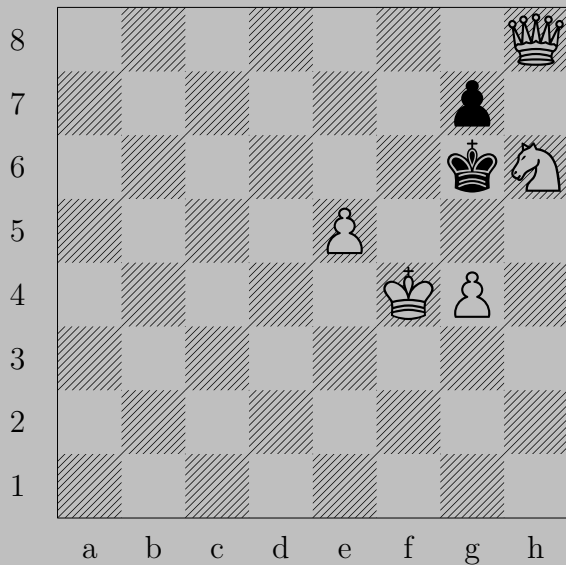
E. Szentgyörgyi, 1927



Rg2

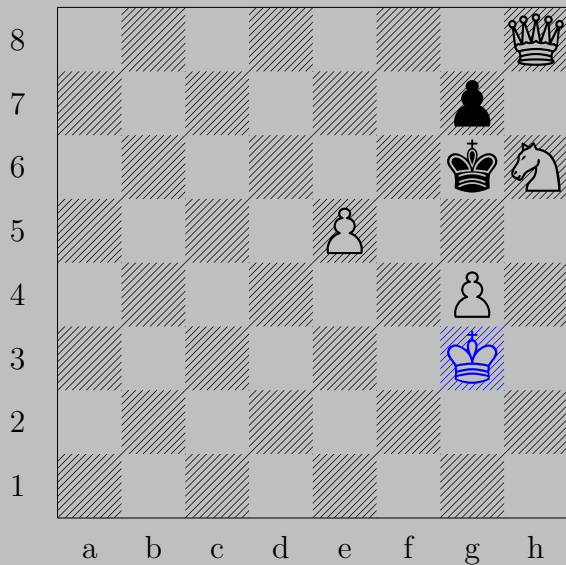
If Kxh3 , Nf2 . If Kg3 , Bg4 .

3132



E. Szentgyörgyi, 1927

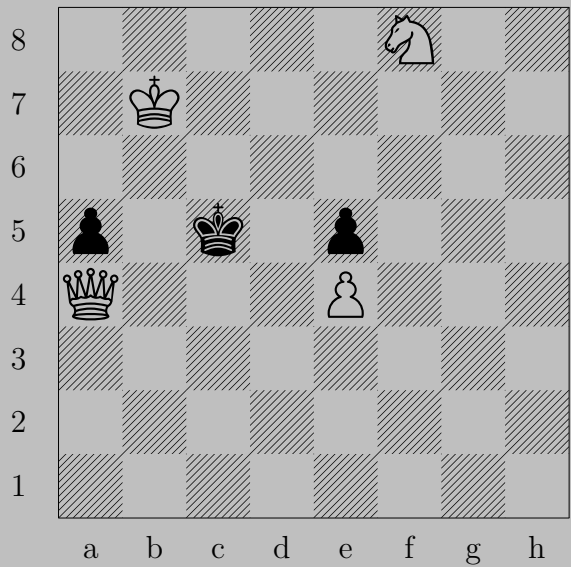
3132



♔g3

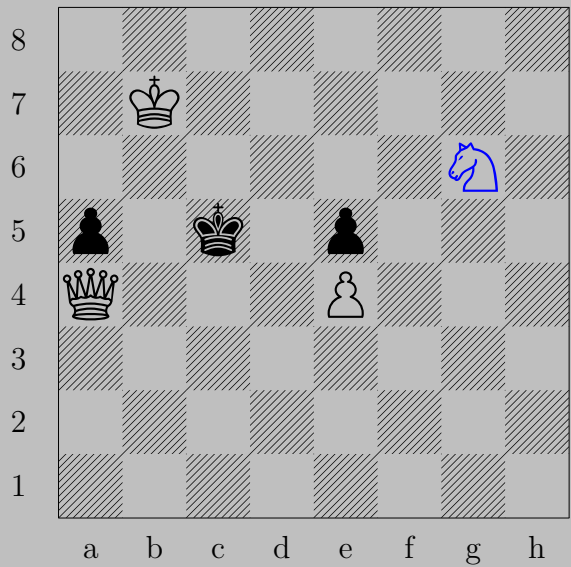
If ♖xh6, ♚g8. If ♔g5, ♚xg7.




3133



E. Szentgyörgyi, 1927

3133



g6, d6
c6

3134



E. Szentgyörgyi, 1927

See [3136](#)

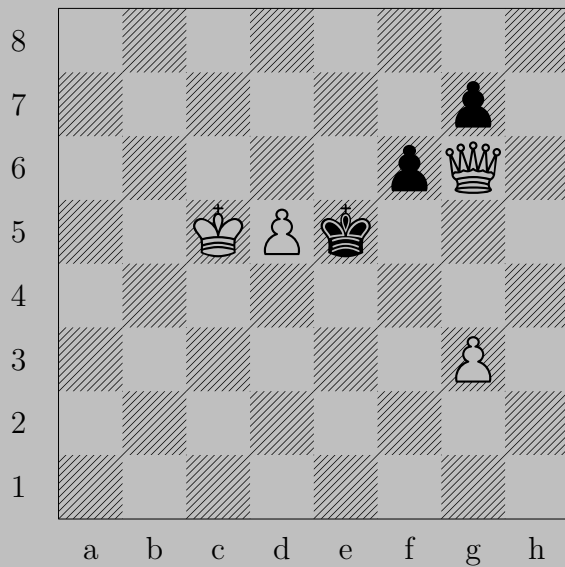
3134



♖e5

If ♔e3, ♕e1. If ♜e3, ♞d3.

3135



E. Szentgyörgyi, 1927

3135



♙g4

If ♗f5, ♙d4. If ♗g6 or ♗g5, ♙e6.

3136



E. Szentgyörgyi, 1927

See [3134](#).

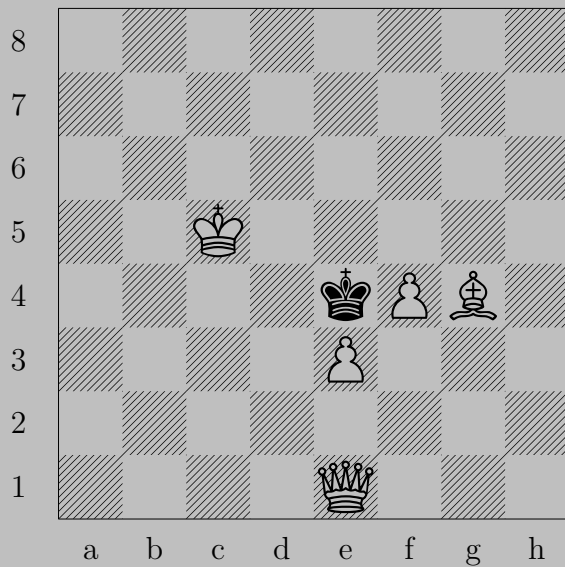
3136



♙h3

If ♔g1, ♕e3. If ♖e3, ♕xe3.

3137

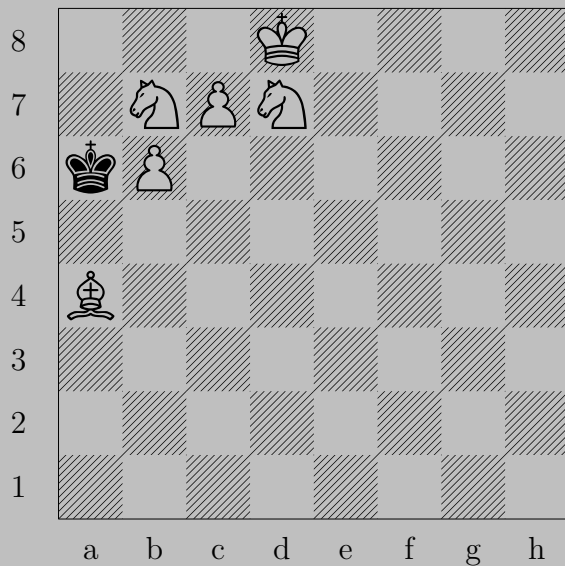


E. Szentgyörgyi, 1927

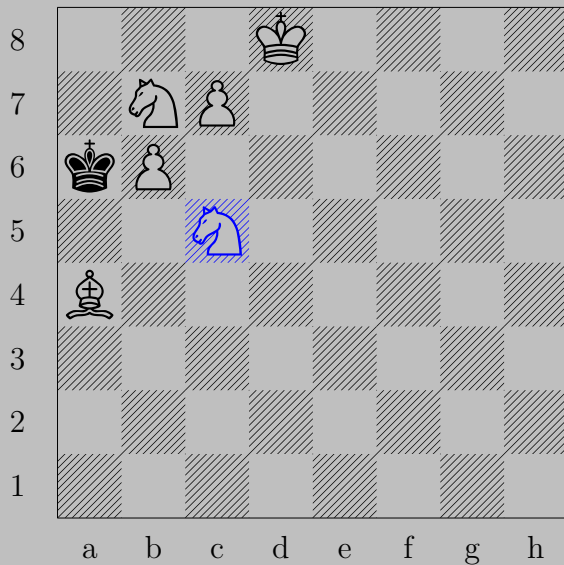
3137



♔d1, ♔xe3
♔d4



3138



$\text{♞}(d7)c5+, \text{♔}\times b6$
 $\text{♟}c8(\text{♞})$

3139



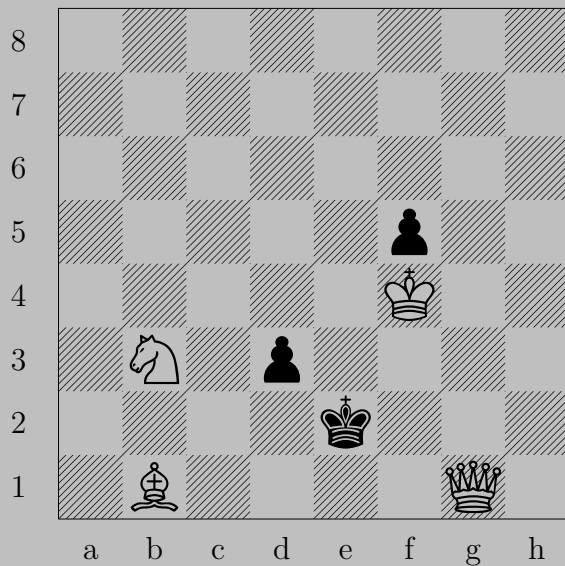
E. Szentgyörgyi, 1927

3139



♔d6

If ♘xh7, ♕f8. If ♔e8, ♕xg8.

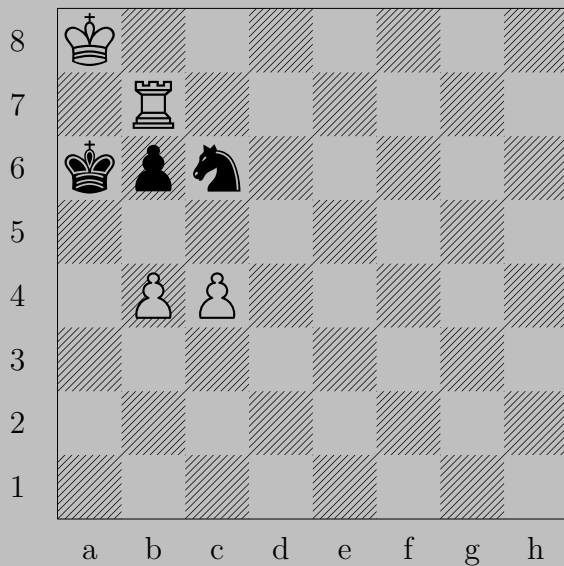


3140



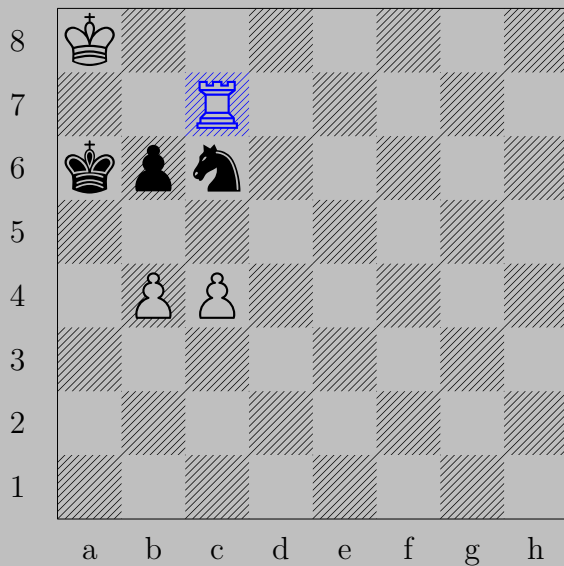
♔×d5, ♖d2 or ♗f3
♞d4.

3141



E. Szentgyörgyi, 1927

3141

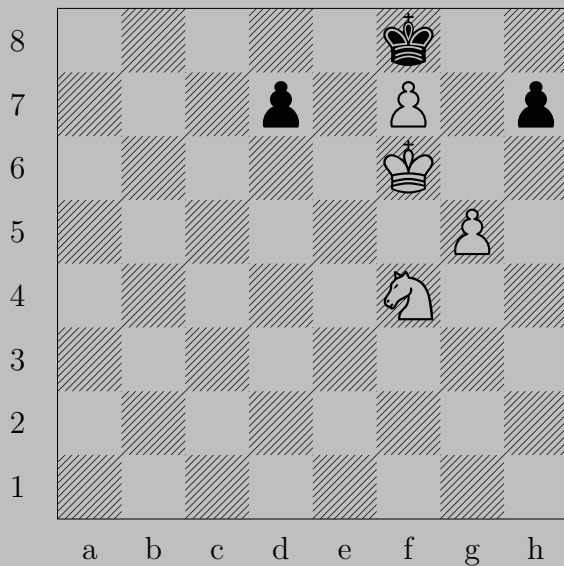


Rc7

If Bb5 , Rxc6 .

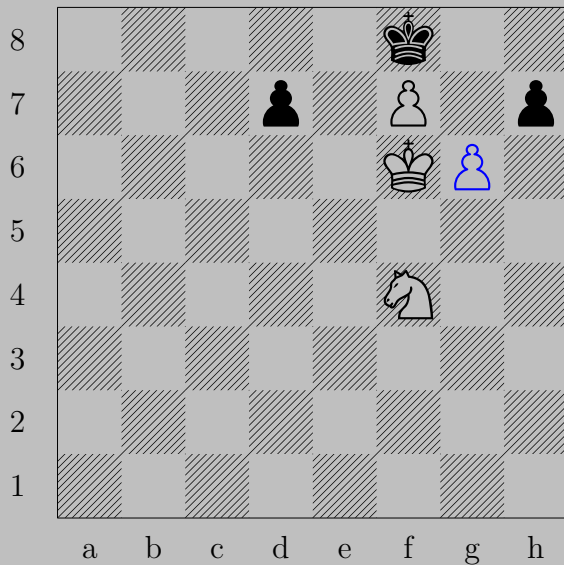
If Na7 , Rxa7 . Otherwise, Ra7 .

3142



E. Szentgyörgyi, 1927

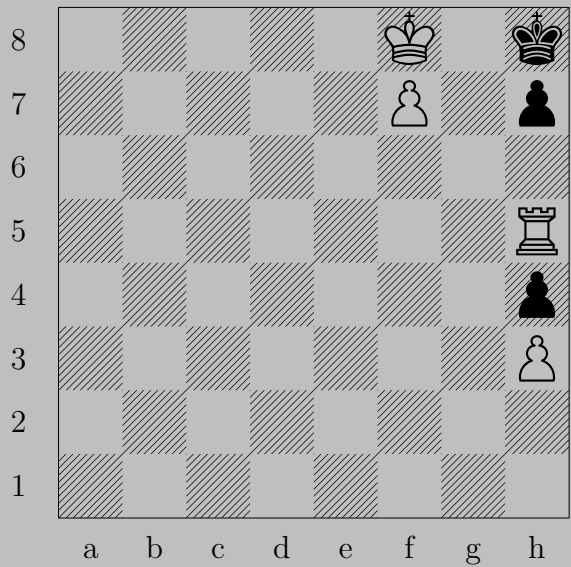
3142



$\triangleleft g6$

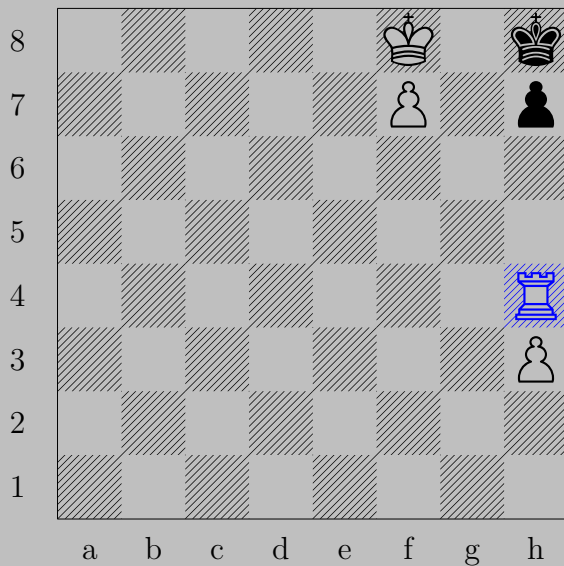
If $\triangleleft \times g6$, $\triangleleft \times g6$. If $\triangleleft h6$ or $\triangleleft h5$, $\triangleleft g7$. If $\triangleleft d6$ or $\triangleleft d5$, $\triangleleft e6$.

3143



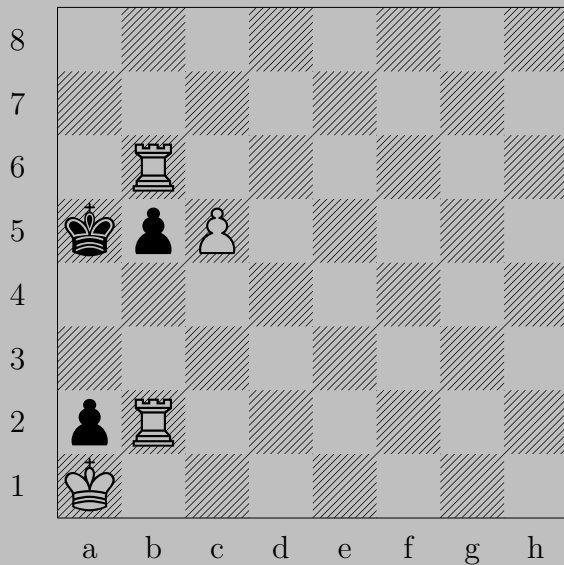
E. Szentgyörgyi, 1927

3143

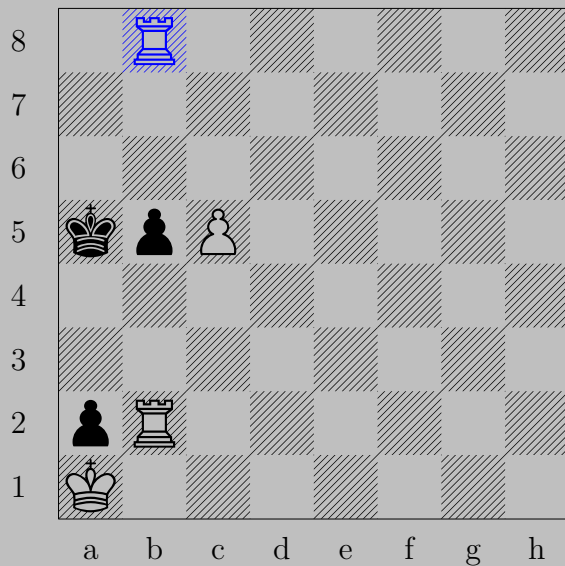


$\text{♖}\times\text{h4}$

If $\text{♜}\text{h6}$, $\text{♖}\times\text{h6}$. If $\text{♜}\text{h5}$, $\text{♖}\times\text{h5}$.



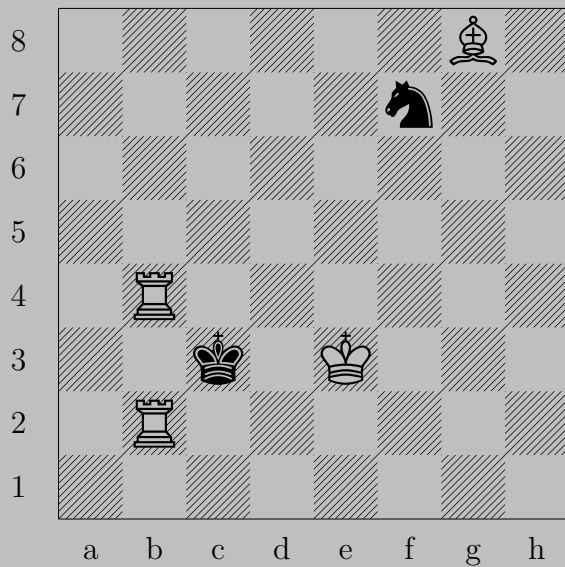
3144



♖b8

If ♔a4, ♖a8. If ♔a6 or ♙b4, ♖x a2.

3145



E. Szentgyörgyi, 1927

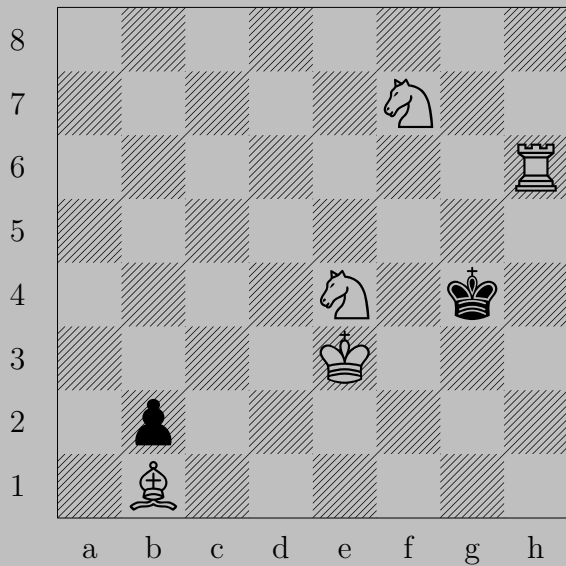
3145



♔h7, anything

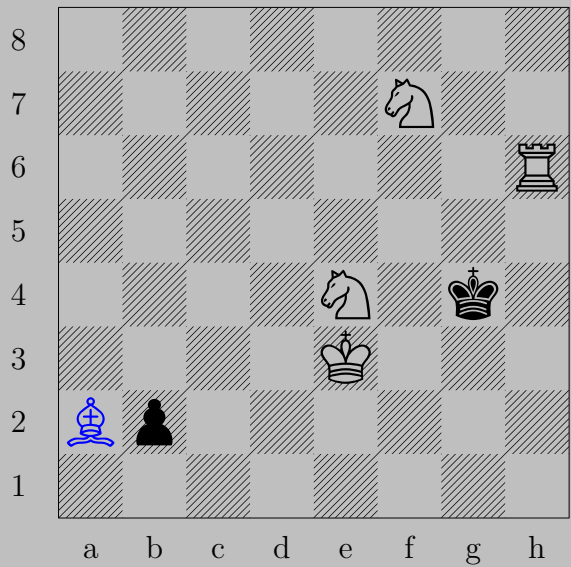
♖(b2)b3

3146



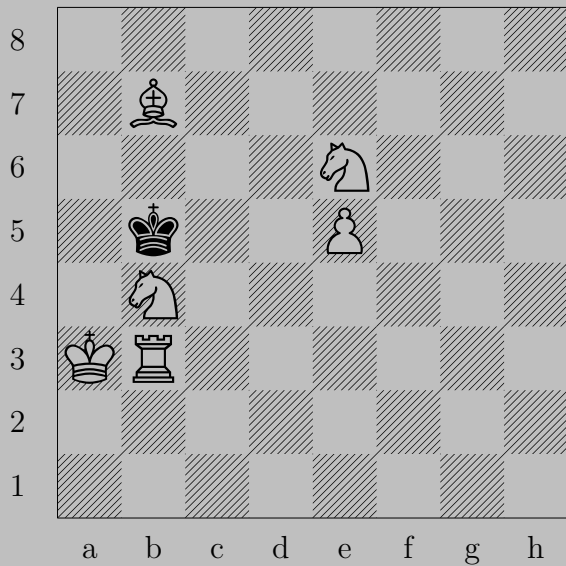
E. Szentgyörgyi, 1927

3146



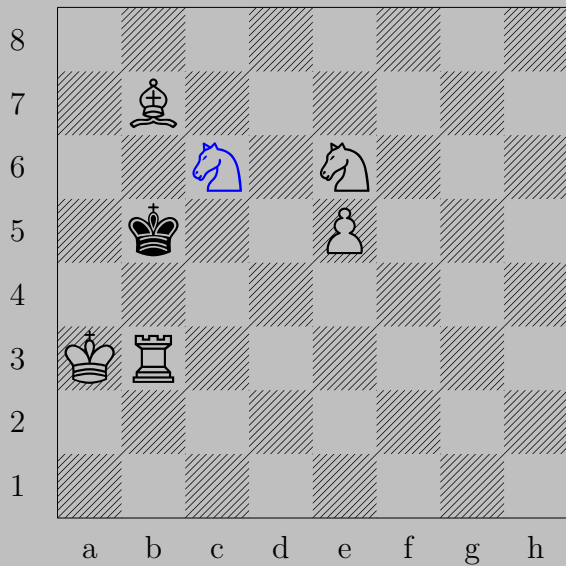
♗a2, ♔f5 or ♖b1
♗e6

3147



E. Szentgyörgyi, 1927

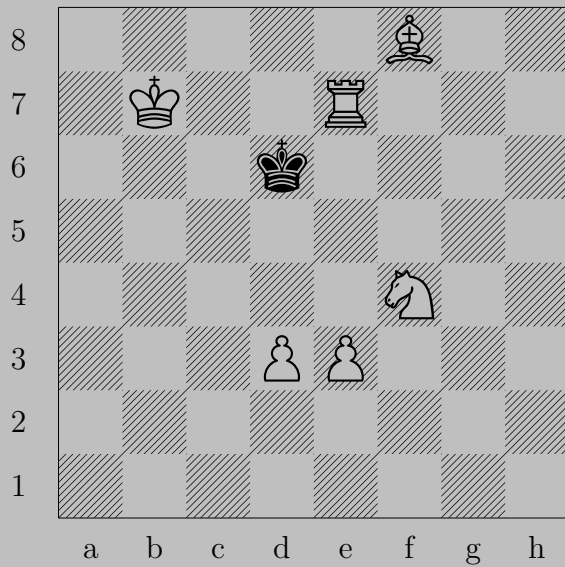
3147



♞c6+, ♔c4

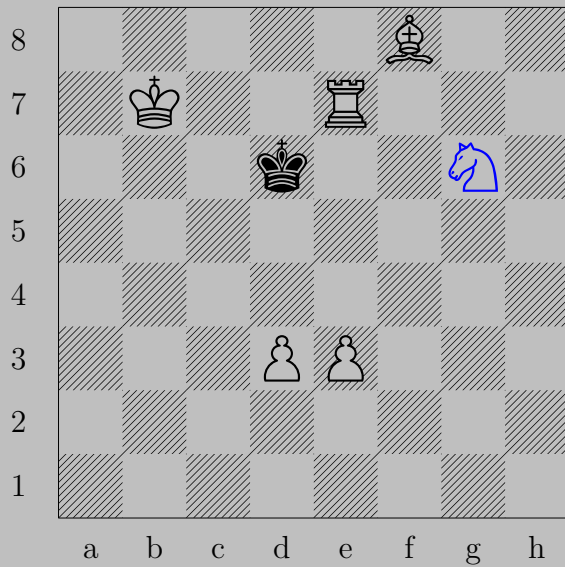
♞a5

3148



E. Szentgyörgyi, 1927

3148



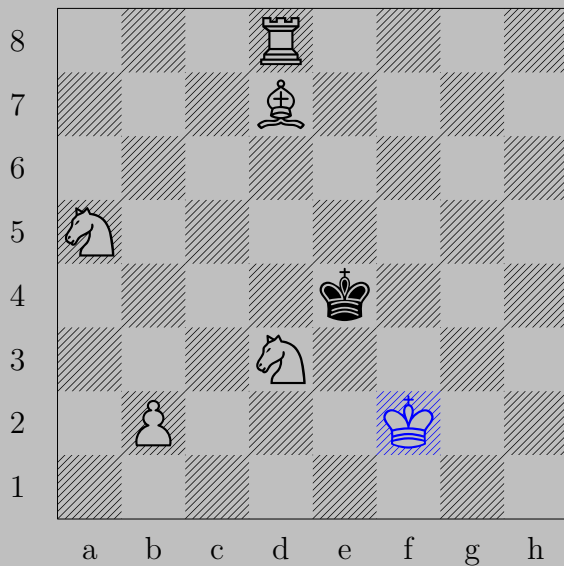
Ng6 , Kc5 or Kd6
 Re5

3149



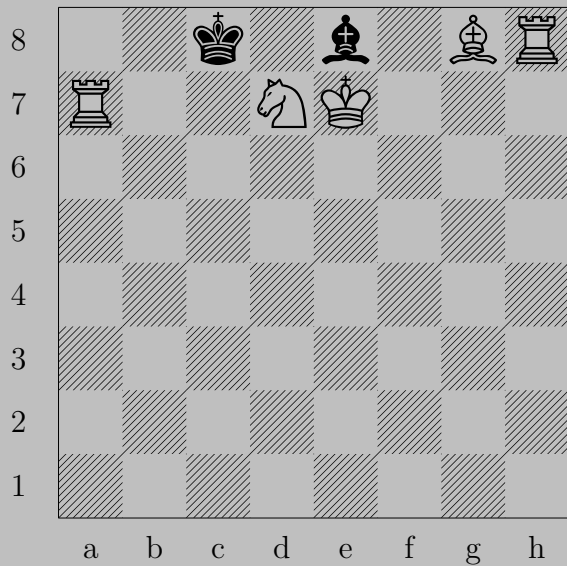
E. Szentgyörgyi, 1927

3149



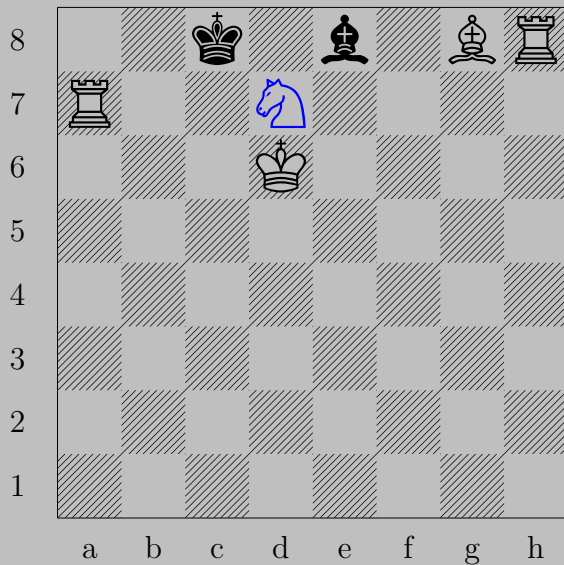
♔f2, ♖×d3 or ♖d4 or ♖d5
♘f5

3150



E. Szentgyörgyi, 1927

3150



♔d6

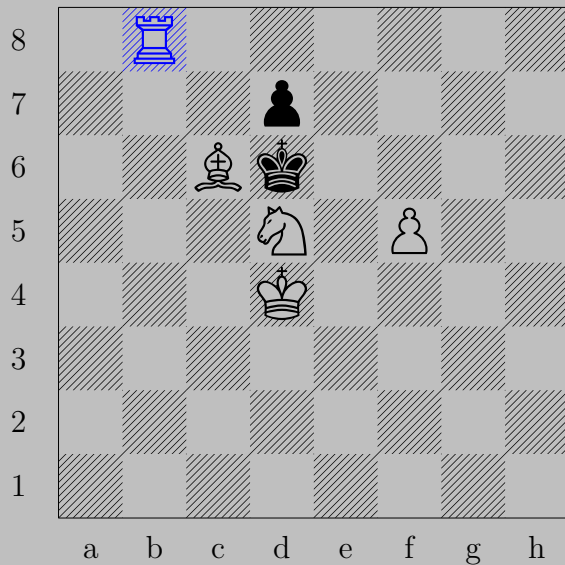
If ♔d8, ♖a8. If ♘xd7, ♘e6. If ♘g6-h5, ♘f7. If ♘f7, ♘xf7.

3151



E. Szentgyörgyi, 1927

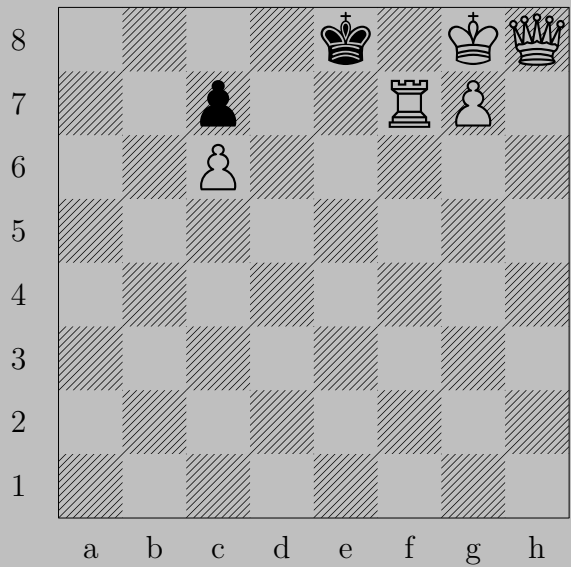
3151



Rb8

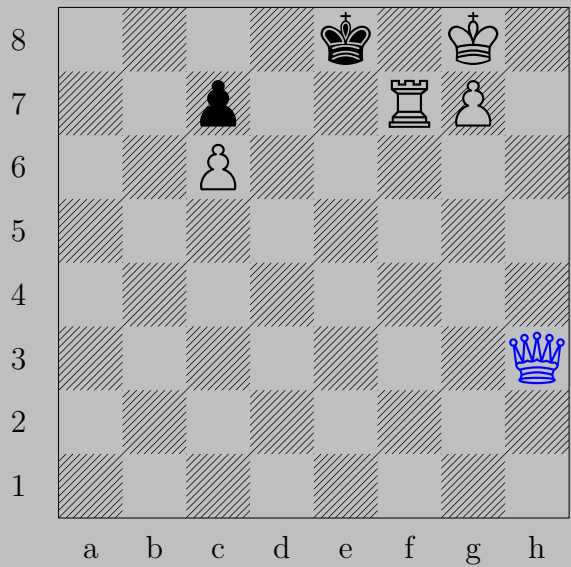
If Pxc6 , Rd8 . If Kxc6 , Rb6 .

3152



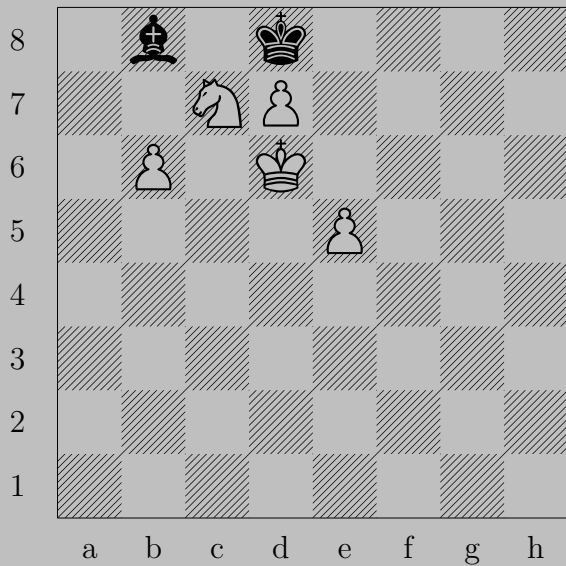
E. Szentgyörgyi, 1927

3152



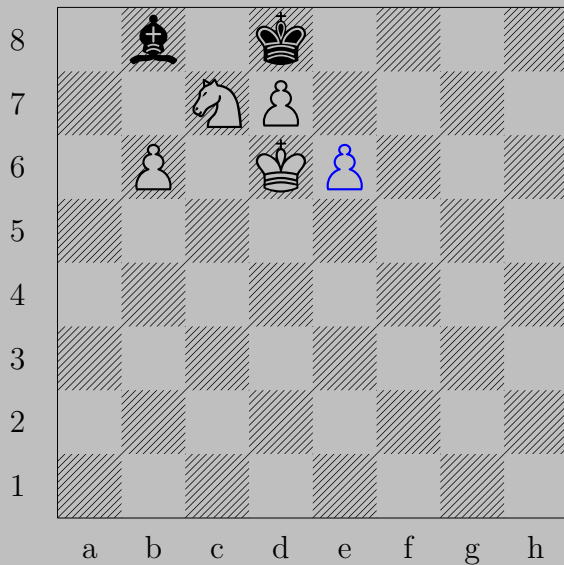
♔h3, ♔d8
♔d7

3153



E. Szentgyörgyi, 1927

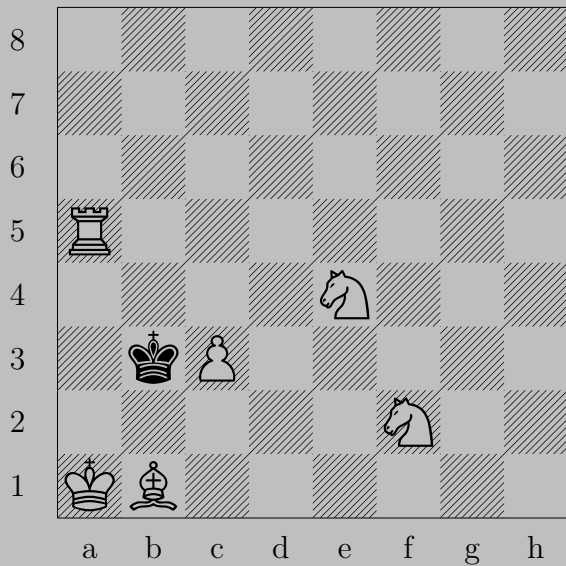
3153



♙e6

If ♙xc7, ♙xc7. If ♙a7, ♙e7.

3154



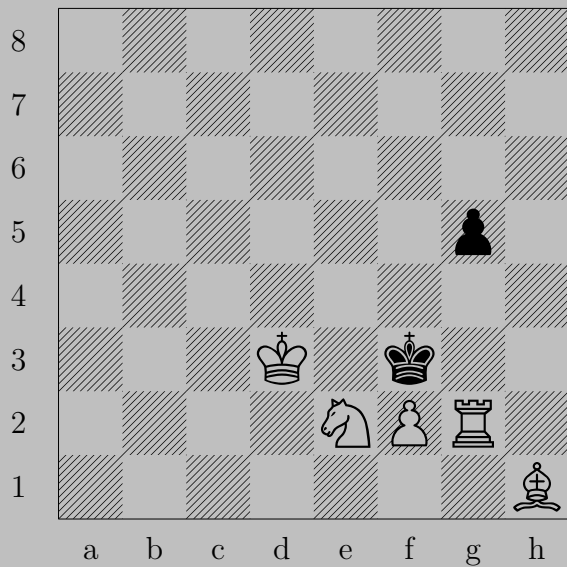
E. Szentgyörgyi, 1927

3154



d1, c4
d2

3155



E. Szentgyörgyi, 1927

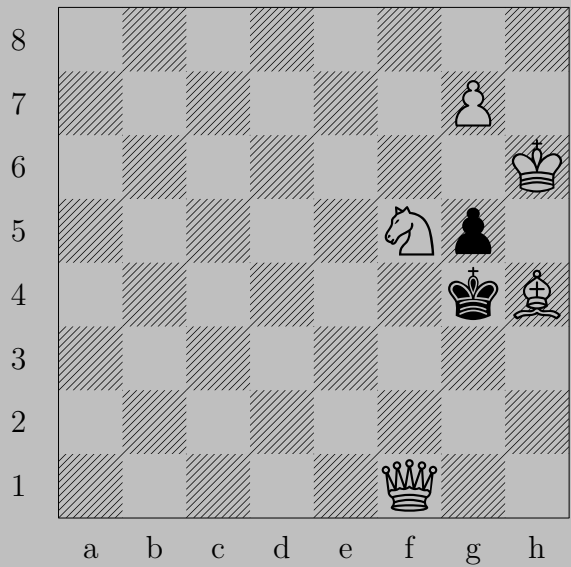
3155



♔d2

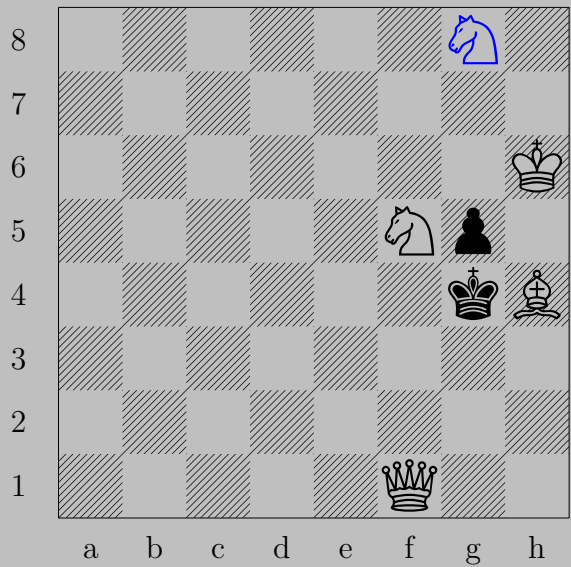
If ♕g4, ♖h2. If ♔e4, ♖xg5.

3156



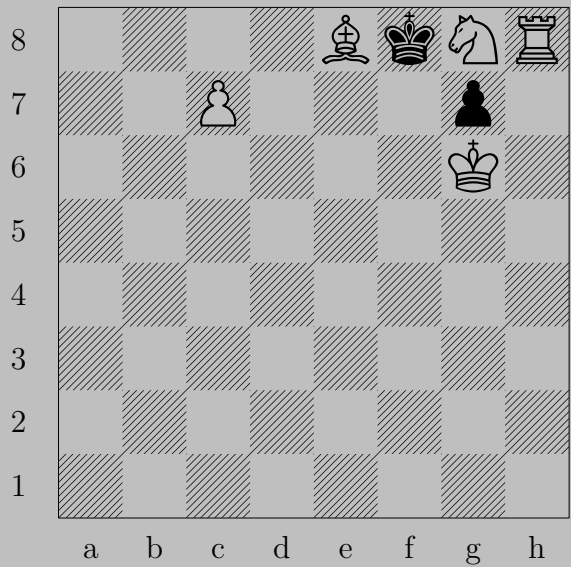
E. Szentgyörgyi, 1926

3156



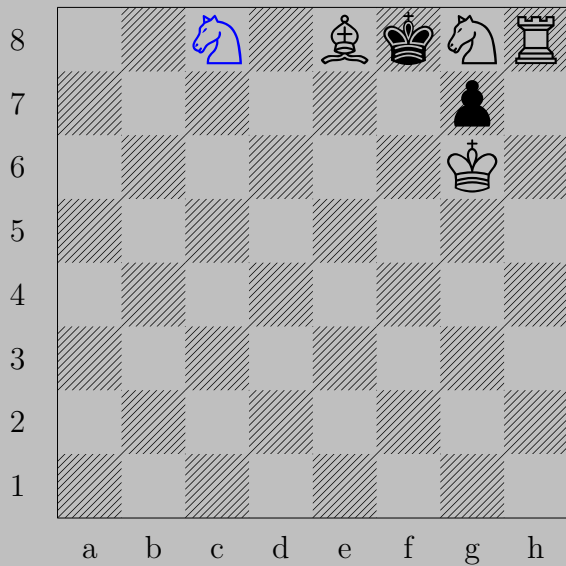
♔g8(♘), ♖xh4
♘f6

3157



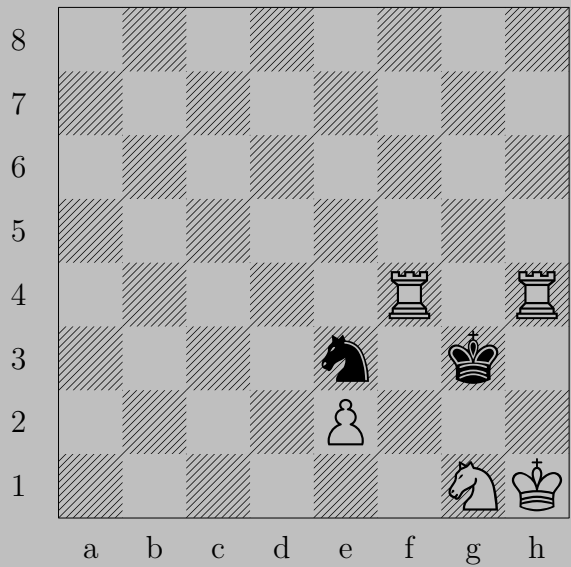
E. Szentgyörgyi, 1926

3157



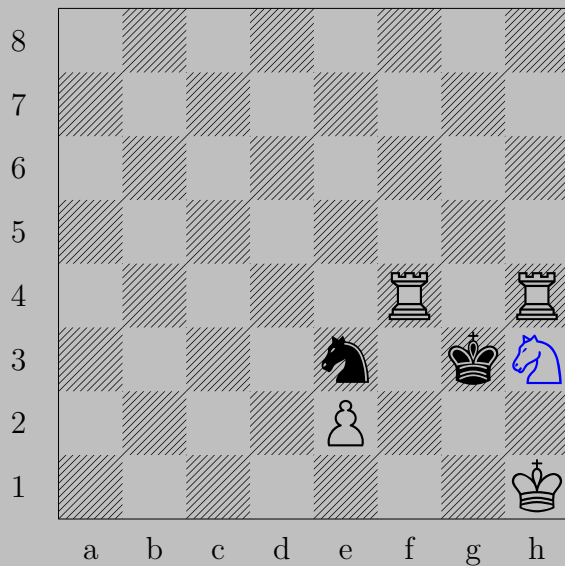
$\triangleleft c8(\text{♞}), \text{♔} \times e8$
 $\text{♞} f6$

3158



E. Szentgyörgyi, 1926

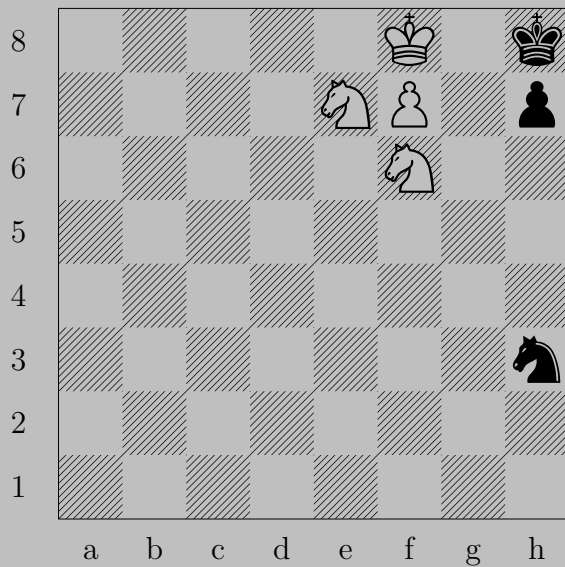
3158



♞h3

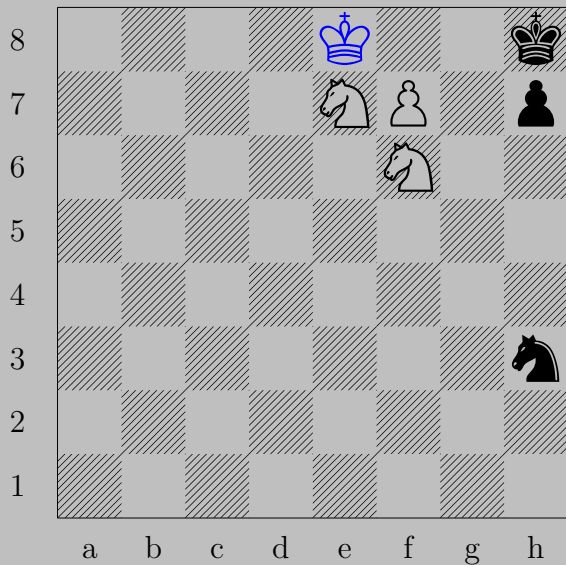
If ♞g4 , ♞(f4)×g4 . Otherwise, ♞(f4)g4 .

3159



E. Szentgyörgyi, 1926

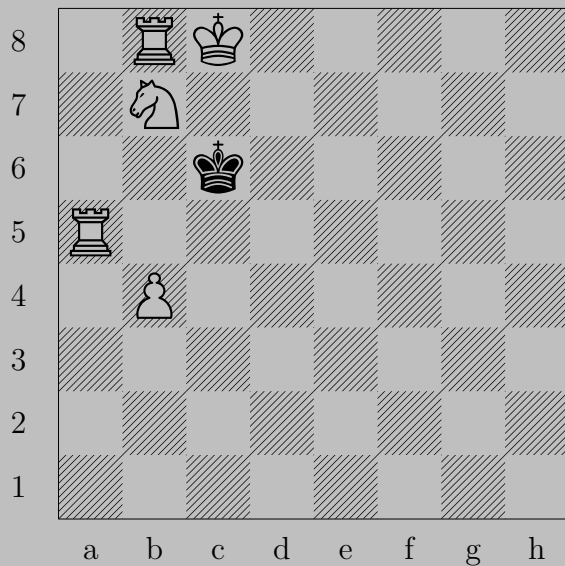
3159



♔e8, anything

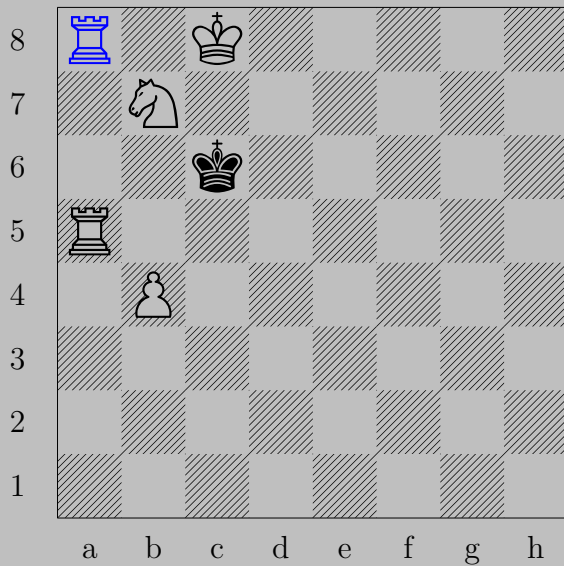
♕f8(♔)

3160



E. Szentgyörgyi, 1926

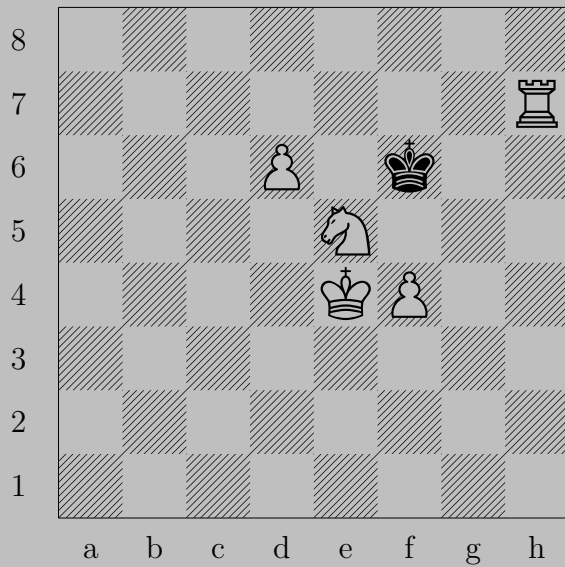
3160



$\text{♖}(b8)a8, \text{♔}b6$

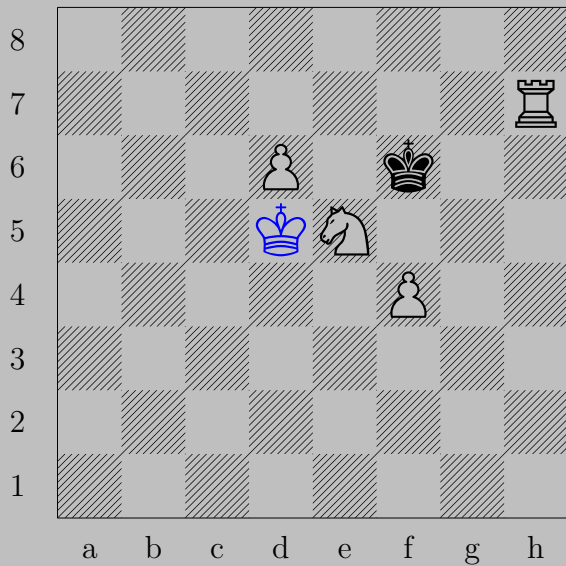
$\text{♖}(a8)a6$

3161



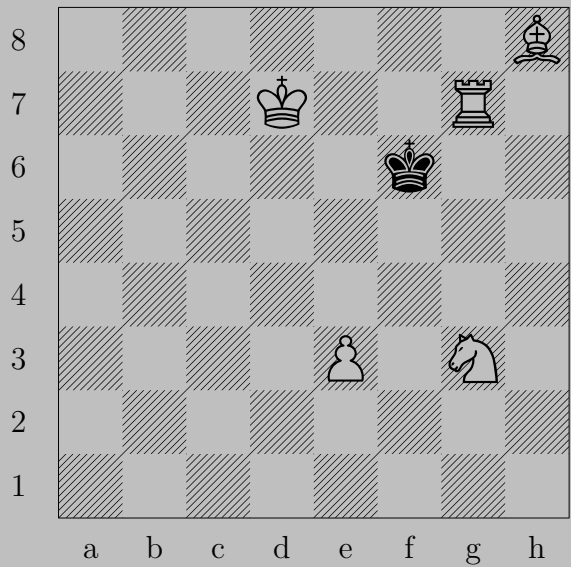
E. Szentgyörgyi, 1926

3161



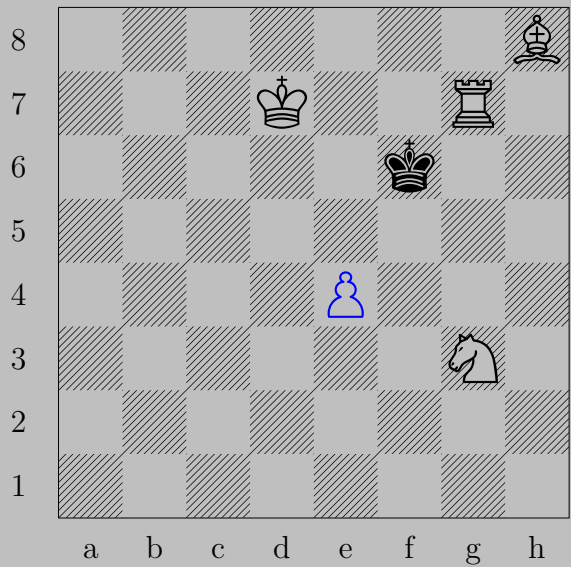
♔d5, ♔f5
♖f7

3162

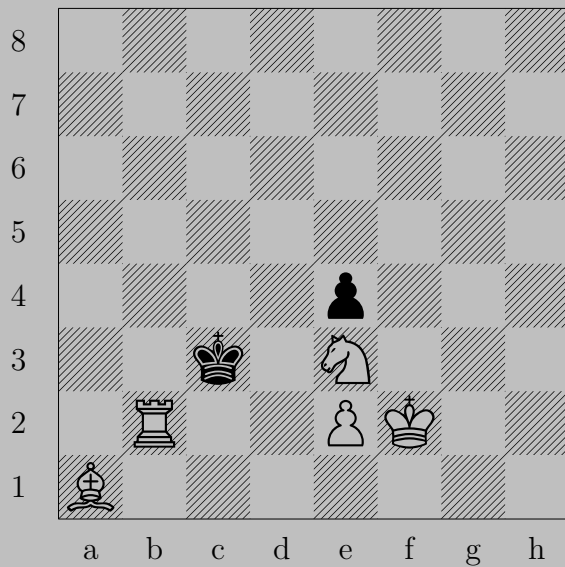


E. Szentgyörgyi, 1926

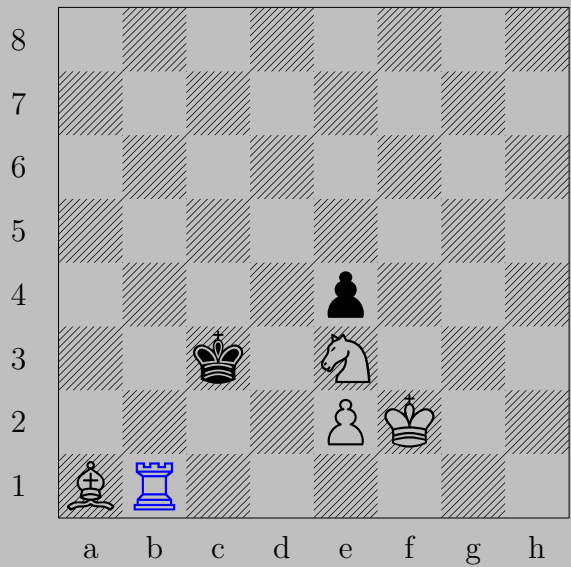
3162



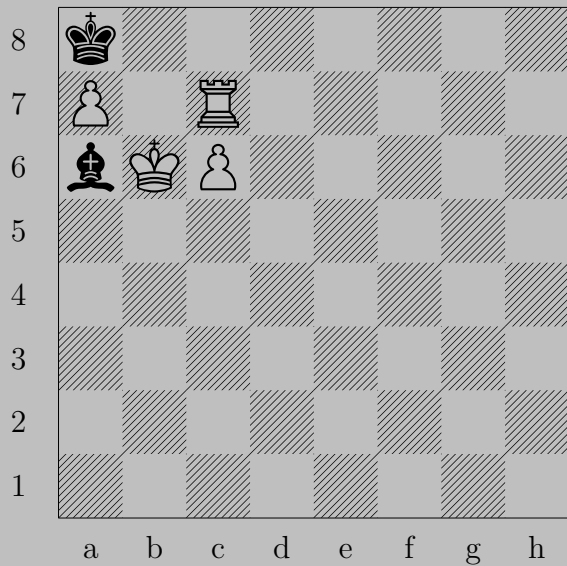
♙e4, ♚e5
♖g4



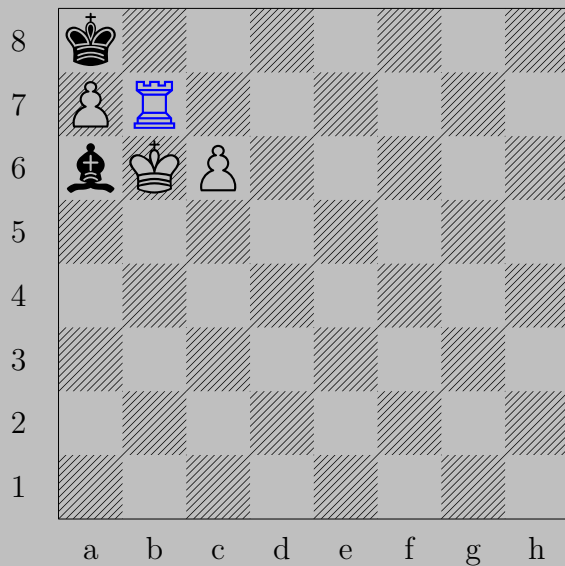
3163



♖b1+, ♔d2
♖d1



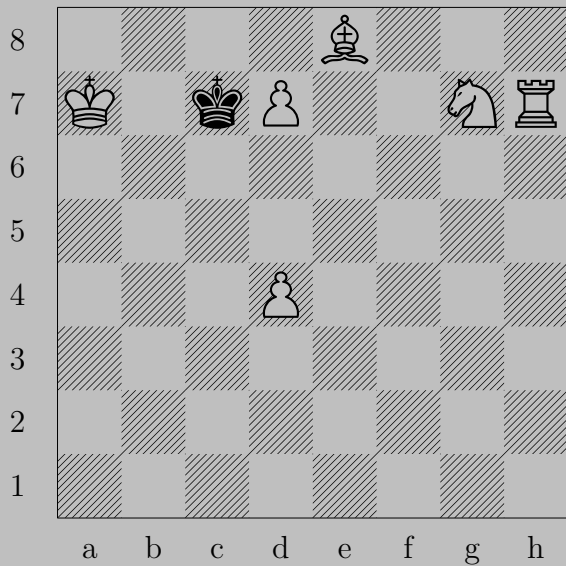
3164



♖b7

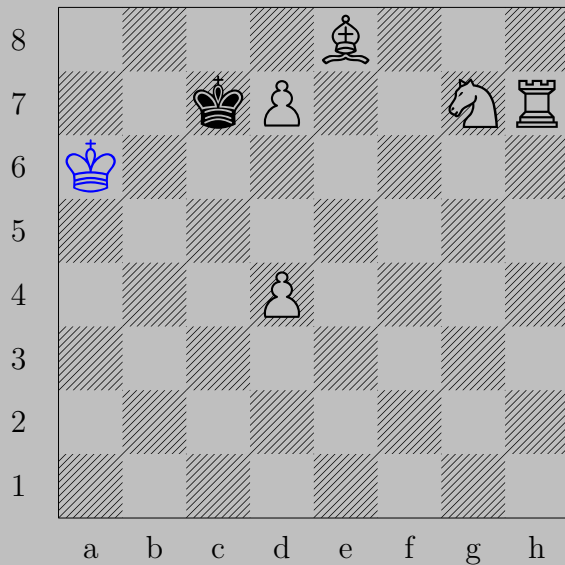
If ♕x b7 , ♗x b7 . If ♕b5-f1 , ♖b8 .

3165



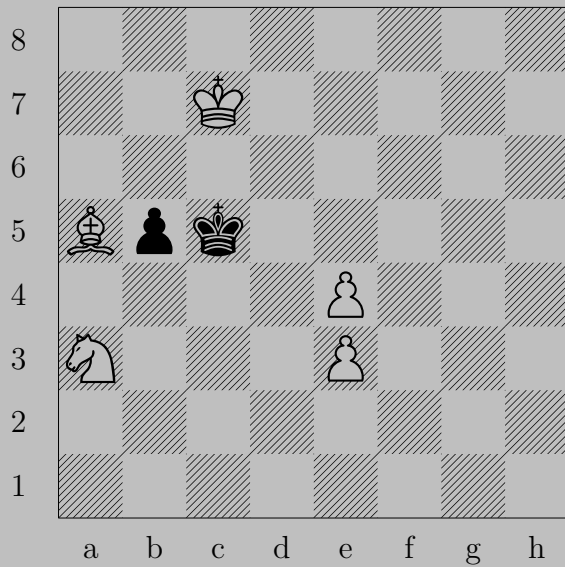
E. Szentgyörgyi, 1926

3165

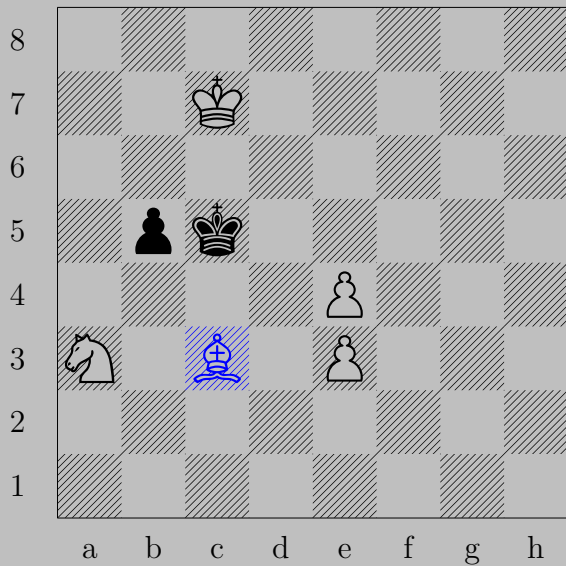


♔a6

If ♔d8, ♞e6. If ♔b8 or ♔c6 or ♔d6, ♖d8(♔).



3166



♙c3, ♖b4

♙d4

3167



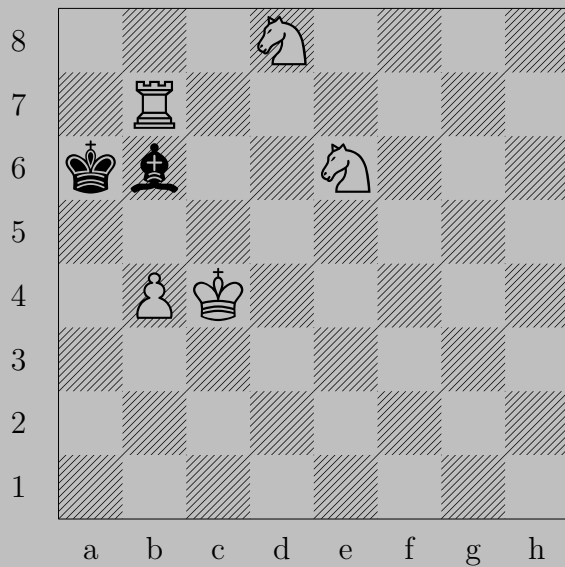
E. Szentgyörgyi, 1926

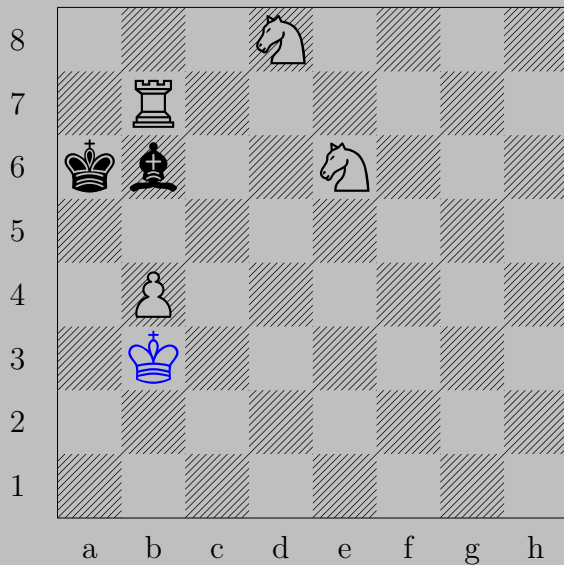
3167



♙g3

If ♚e6 , ♖h6 . If ♜e6 or ♚g5 , ♙h4 .

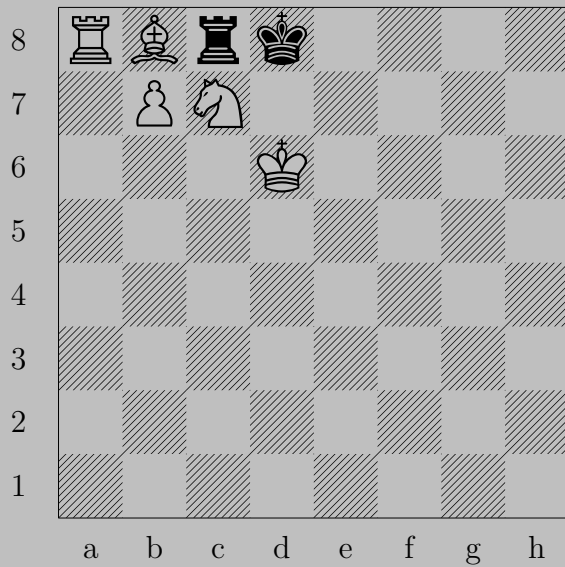




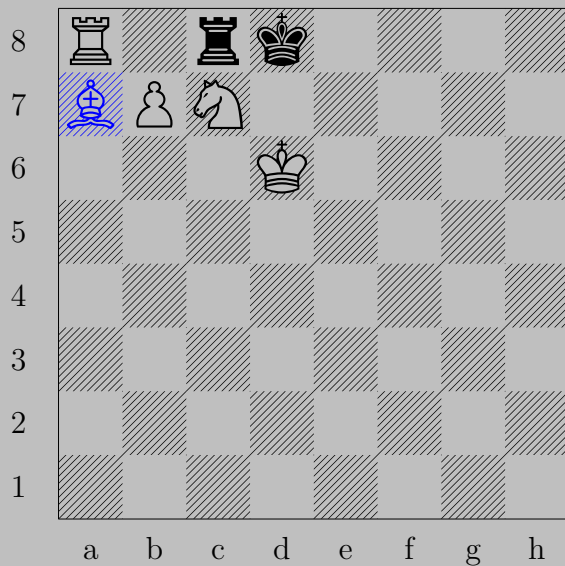
♔b3

If ♕xd8 or ♕d7 or ♕a5, ♖c5. If ♔b5, ♕a7 or ♕c5-g1, ♘c7.

3169



E. Szentgyörgyi, 1926



♔a7

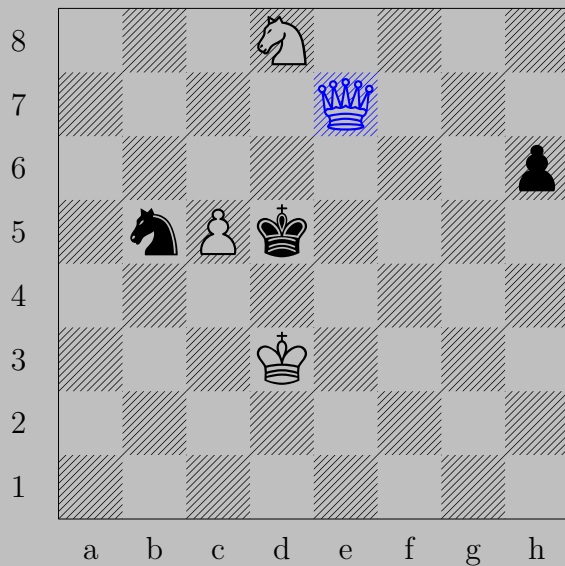
If ♖xa8, ♙xa8(♔). If ♖b8, ♖xb8.

3170



E. Szentgyörgyi, 1928

3170



♙e7

If ♘h5, ♙g5.

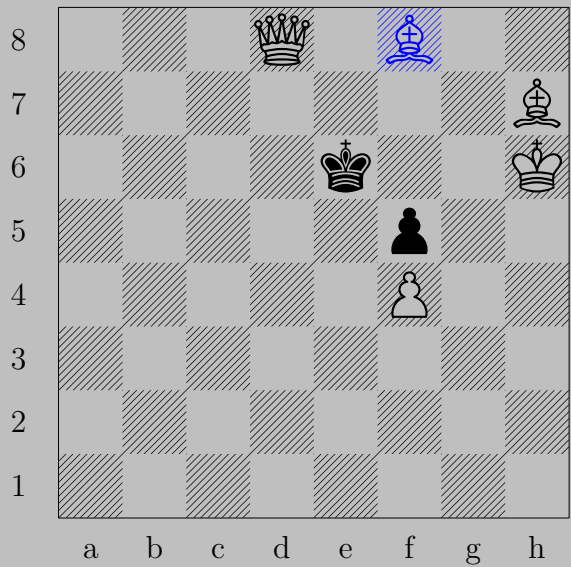
If ♘d7, ♙xd7. Otherwise, ♙d7.

3171



E. Szentgyörgyi, 1927

3171



♔f8(♕), ♔f7
♚e7

3172



E. Szentgyörgyi, 1926

3172

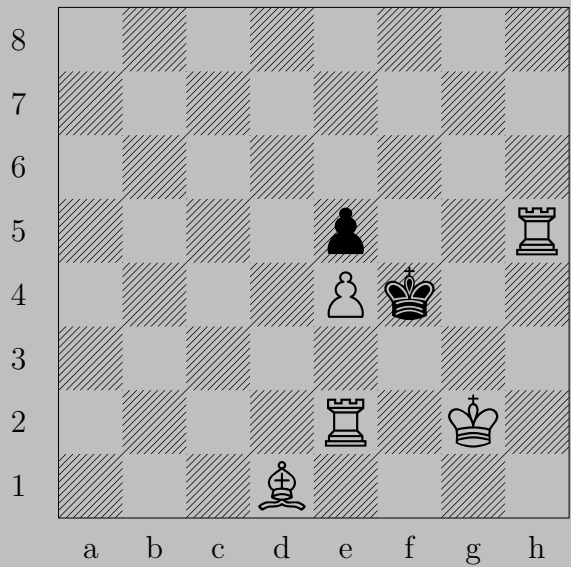


♔b6

If ♘d8 or ♔d6, ♖c8(♘).

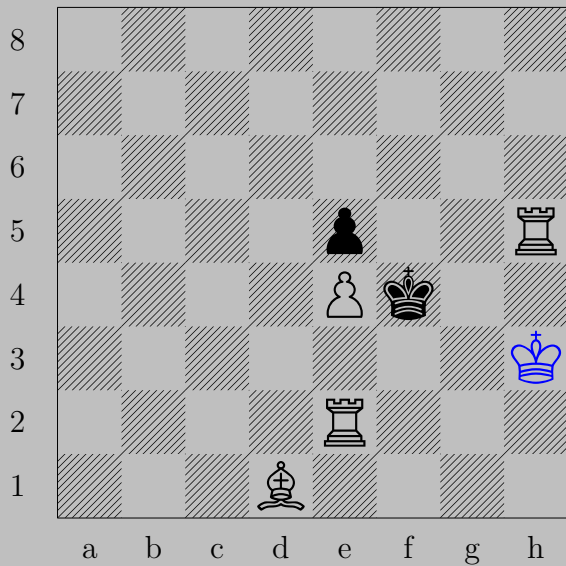
Otherwise, ♖d8(♔).

3173



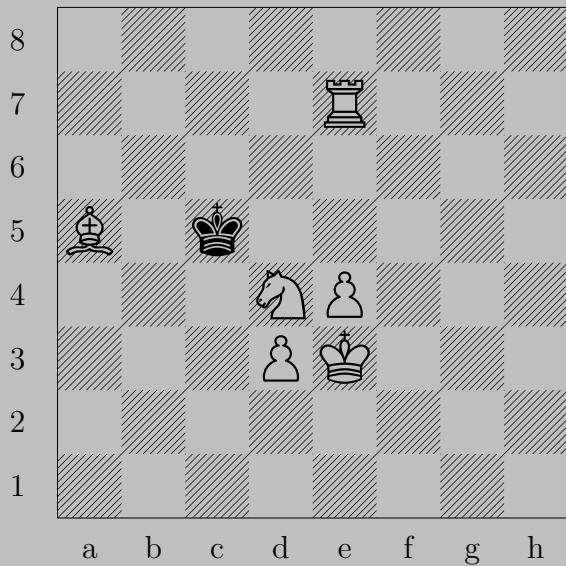
E. Szentgyörgyi, 1926

3173



♔h3, ♔f3
♖f5

3174



E. Szentgyörgyi, 1926

3174



♔d2

If ♖×d4, ♙b6. If ♔d6, ♙b4.

3175



E. Szentgyörgyi, 1936

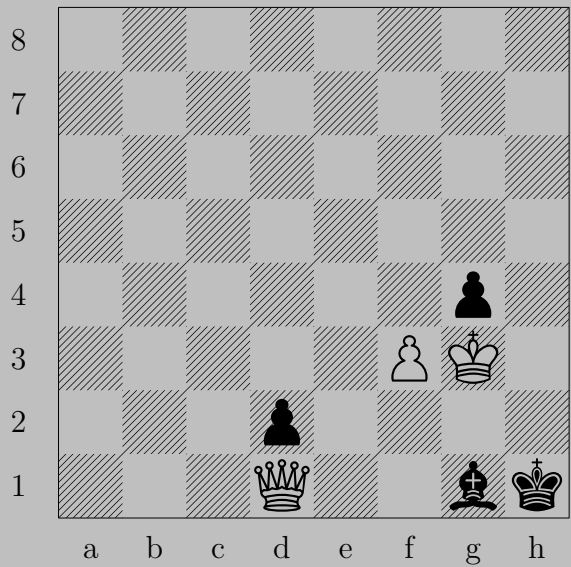
3175



♔h7, ♕f3

♔f5

3176



E. Szentgyörgyi, 1936

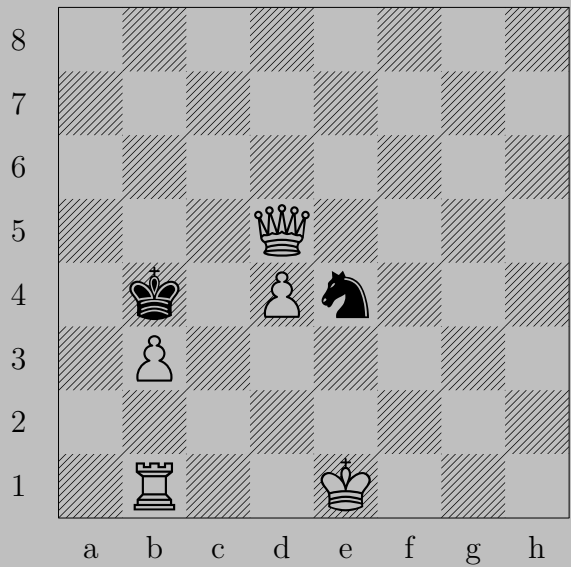
3176



g1

If x3, x3. If d1() or d1() , g2.

3177



E. Szentgyörgyi, 1925

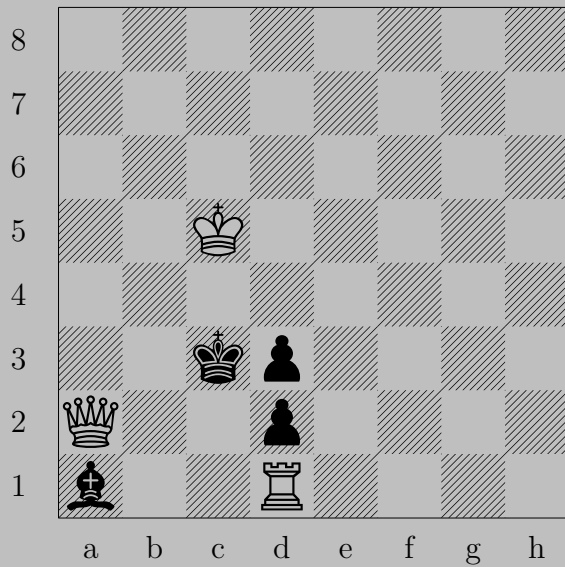
3177



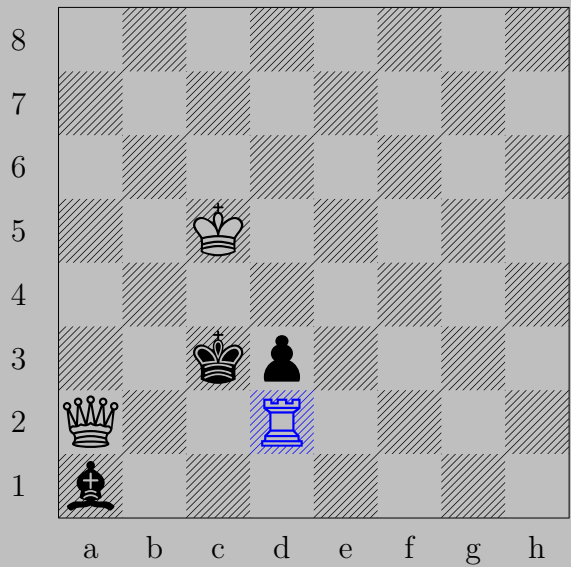
♙c6

If ♔a3, ♙a4. If ♔a5, ♖b4.

If ♘c5, ♙xc5. Otherwise, ♙c5.

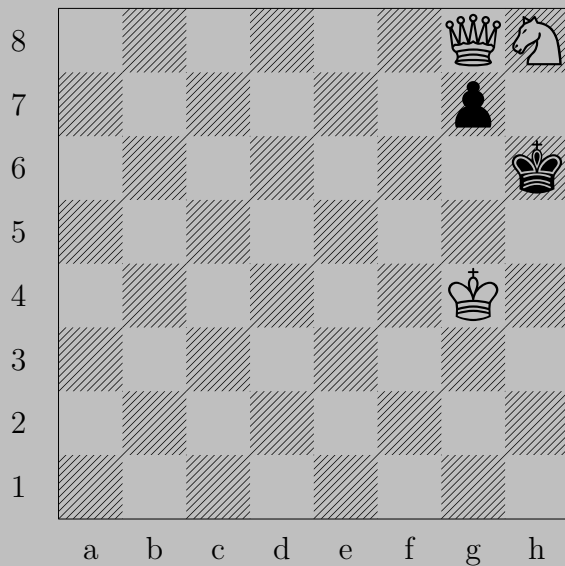


3178



♖×d2, ♔b2
♕×b2

3179



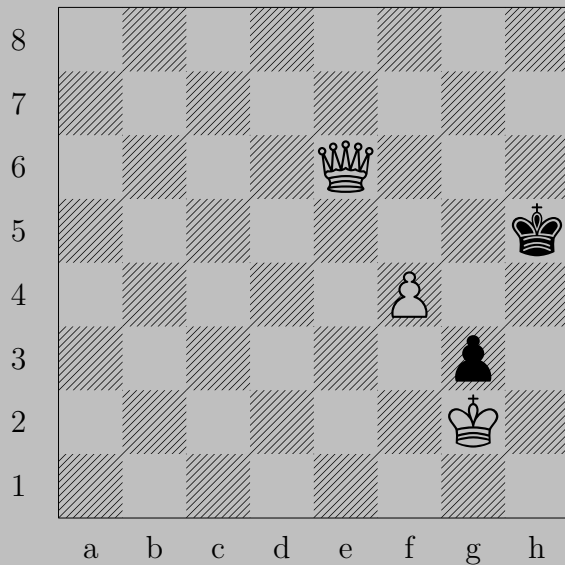
E. Szentgyörgyi, 1928

3179

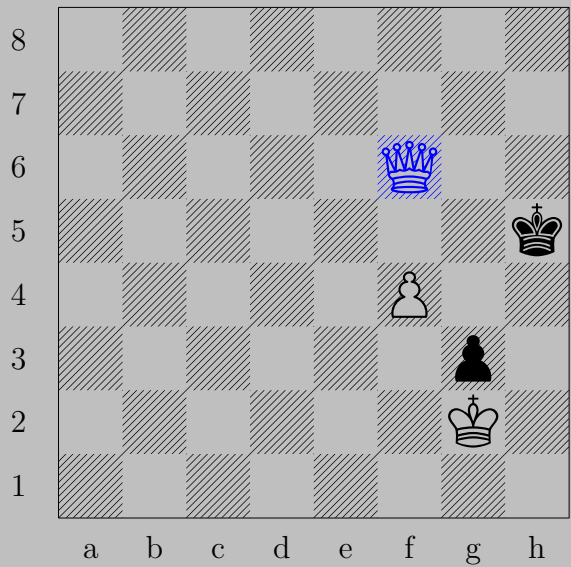


♔f5

If ♖g6+, ♚×g6. If ♖g5, ♚g6. If ♔h5, ♚h7.



3180



♙f6, ♔g4
♙g5

3181



E. Szentgyörgyi, 1927

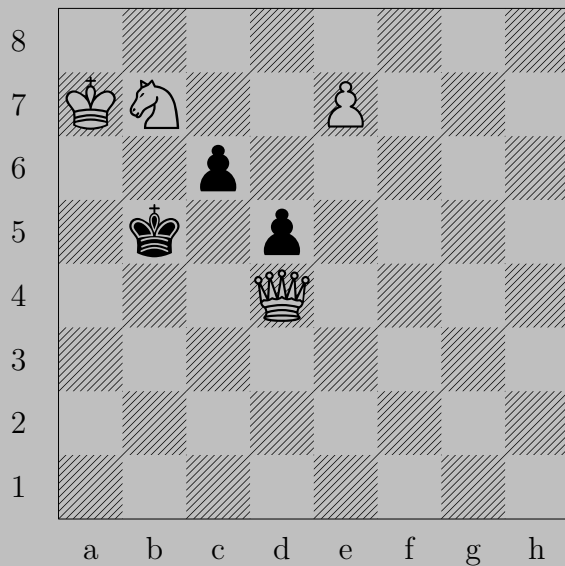
3181



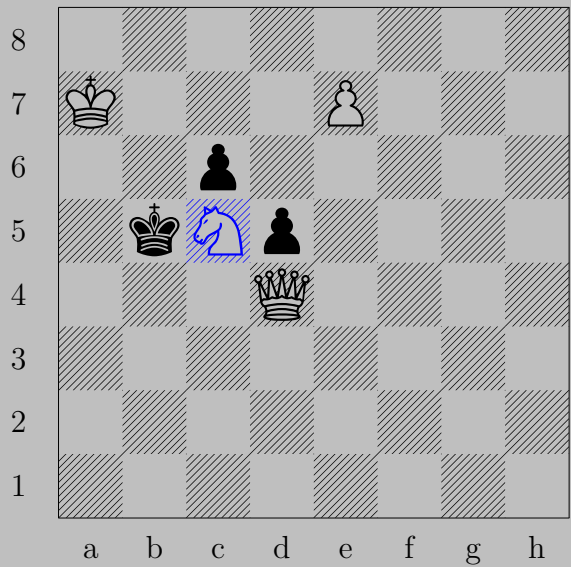
♔d4

If ♠e5, ♔g4. If ♠g4, ♔f4.

Otherwise, ♖f6.



3182



$\text{♞c5, } \text{♔a5}$
 ♔a4



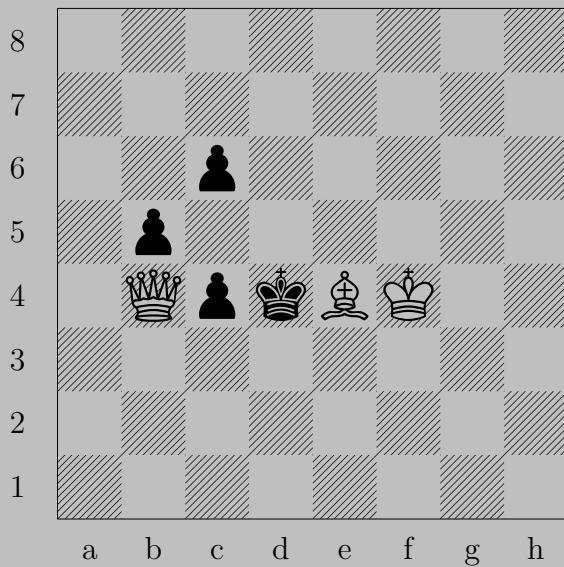
3183



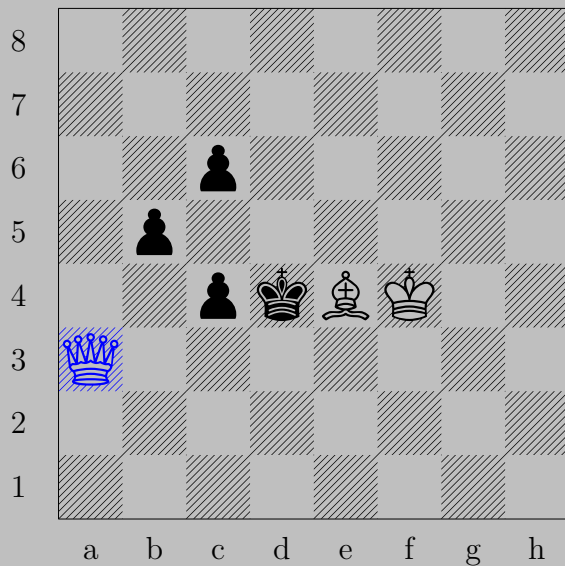
$\text{♙} \times a7$

If $\text{♜} b5$, $\text{♙} b6$. If $\text{♚} b5$ or $\text{♚} c5$, $\text{♙} \times b6$.

3184



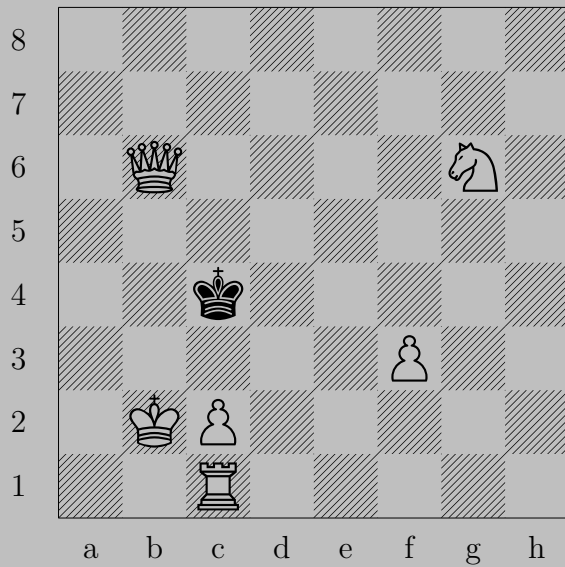
E. Szentgyörgyi, 1928



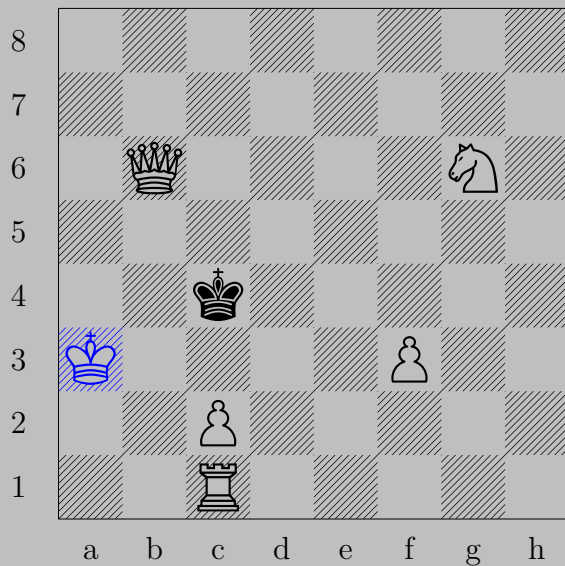
♙a3

If ♖c3, ♙b4. If ♖b4 or ♖c5, ♙e3.

3185



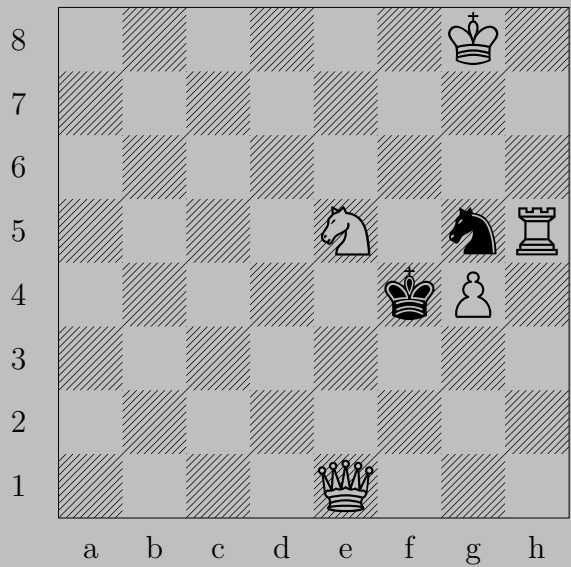
E. Szentgyörgyi, 1928



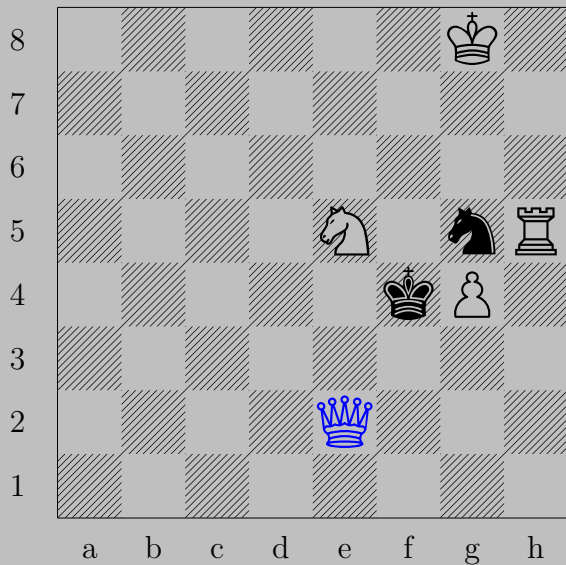
♔a3

If ♕c3, ♙b4. If ♔d5, ♖c4.

3186



E. Szentgyörgyi, 1928

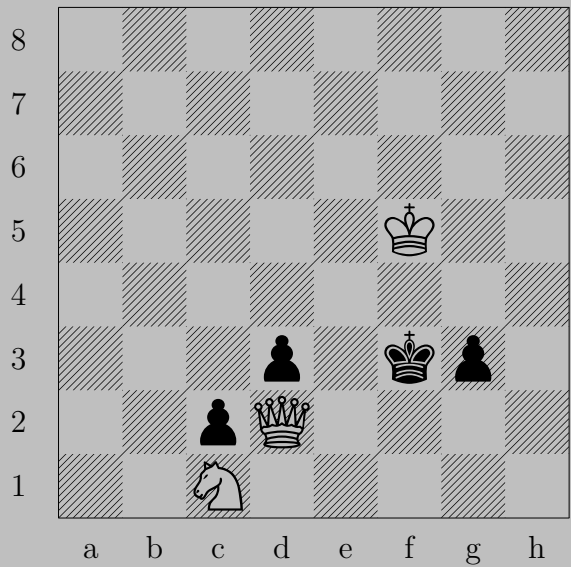


♙e2

If ♔g3, ♙h2.

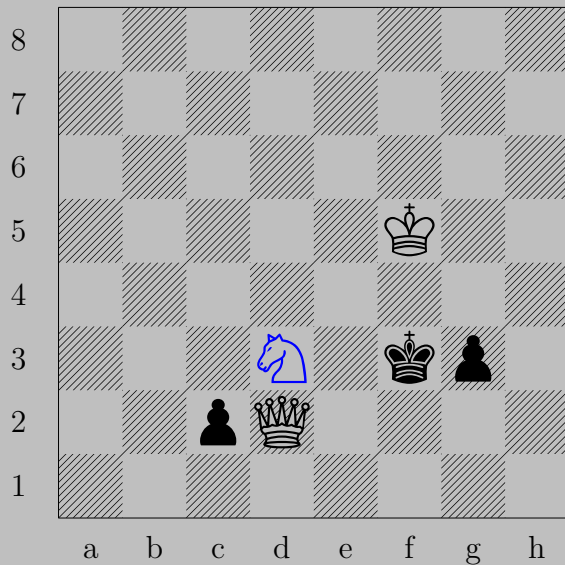
If ♘f3, ♙×f3. Otherwise, ♙f3.

3187



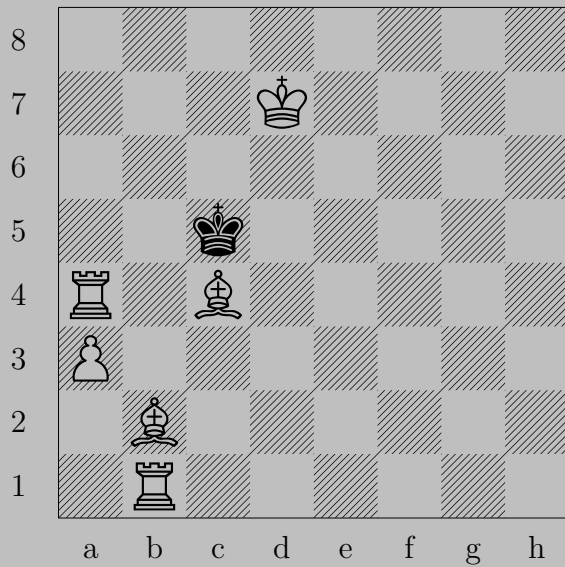
E. Szentgyörgyi, 1928

3187



$\text{♞} \times d3$

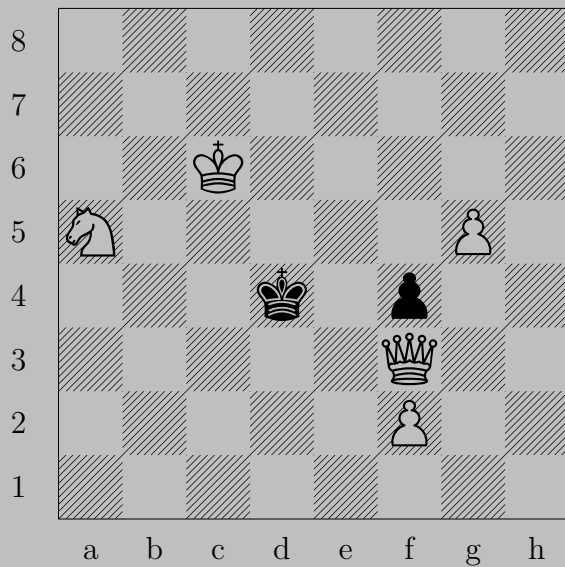
If $\text{♞}c1(\text{♞})$ or $\text{♞}c1(\text{♞})$, $\text{♞}e5$. If $\text{♞}g2$, $\text{♞}f2$.



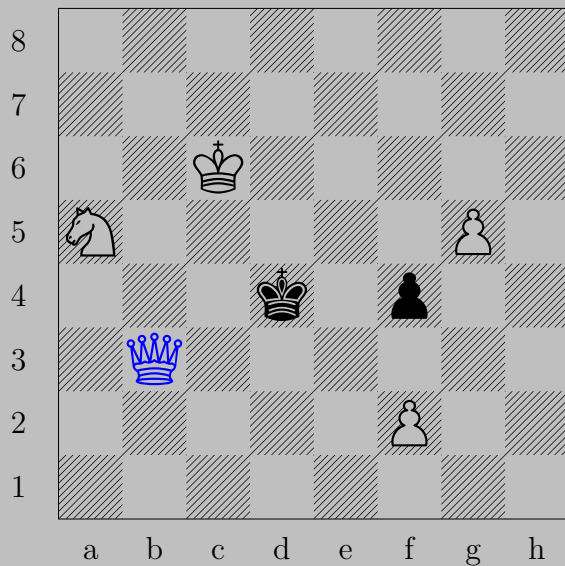


♙d3

If ♖b6, ♙d4. If ♔d5, ♖a5.



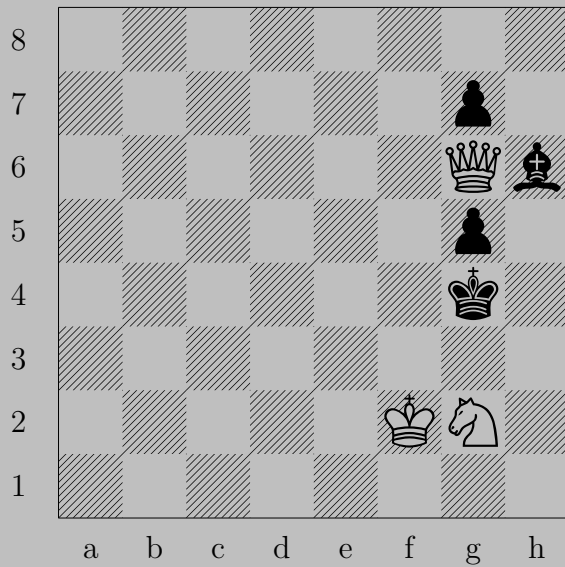
3189



♔b3

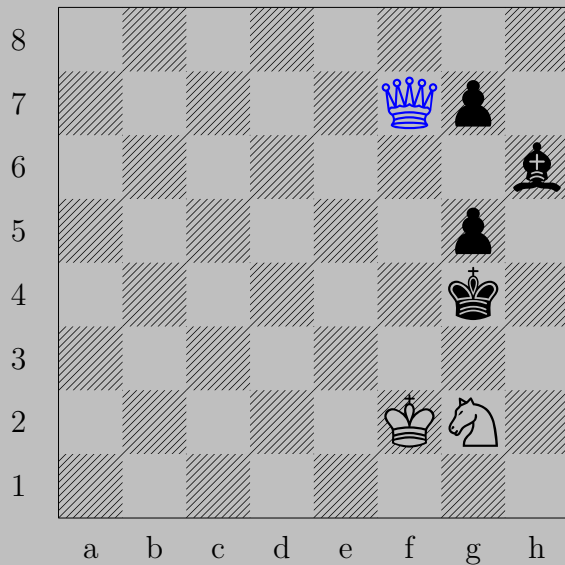
If ♔e4 or ♔e5, ♔d5. If ♖f3, ♔e3.

3190



E. Szentgyörgyi, 1928

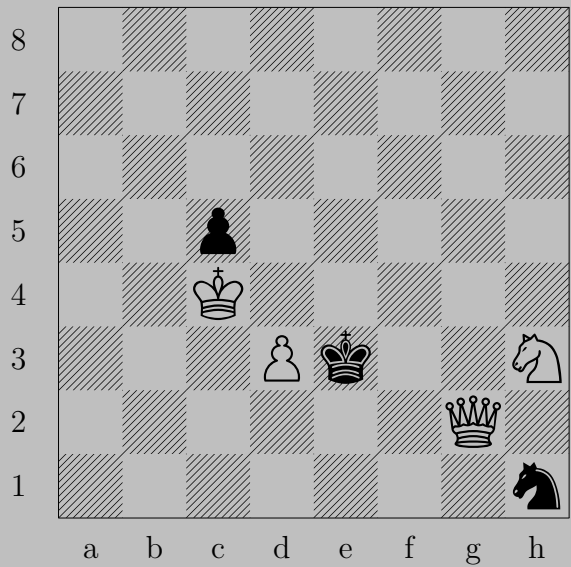
3190



♔f7

If ♔h3, ♕h5. If ♖g6, ♕f3.

3191



E. Szentgyörgyi, 1928

3191



♔c3

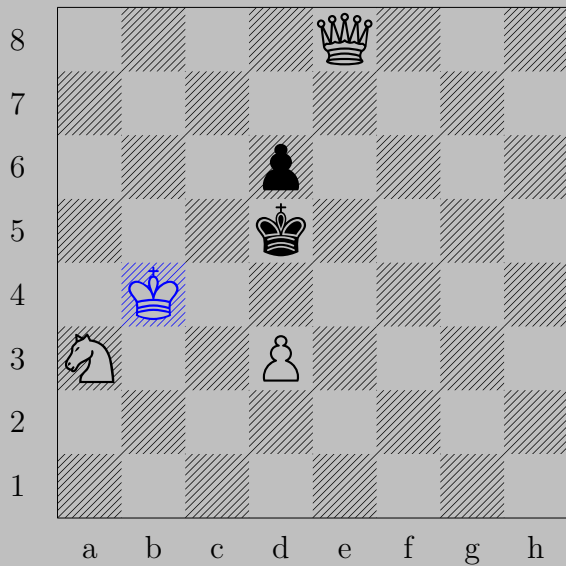
If ♙c4 , ♚e4 . If ♞g3 , ♚f2 . If ♞f2 , ♚xf2 .

3192



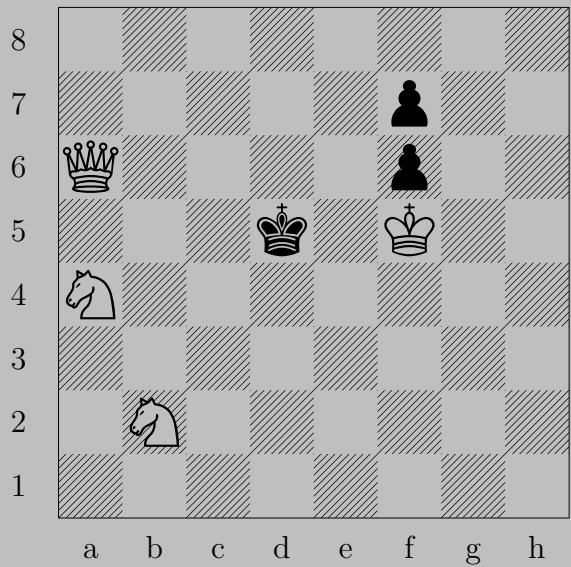
E. Szentgyörgyi, 1928

3192



♔b4, ♔d4
♕e4

3193



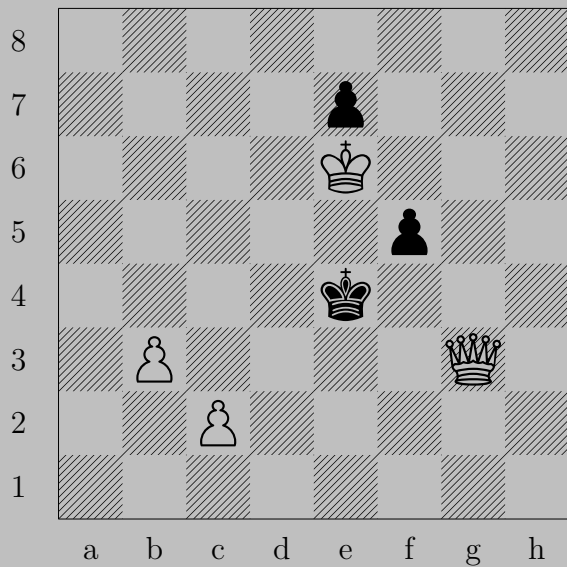
E. Szentgyörgyi, 1933

3193

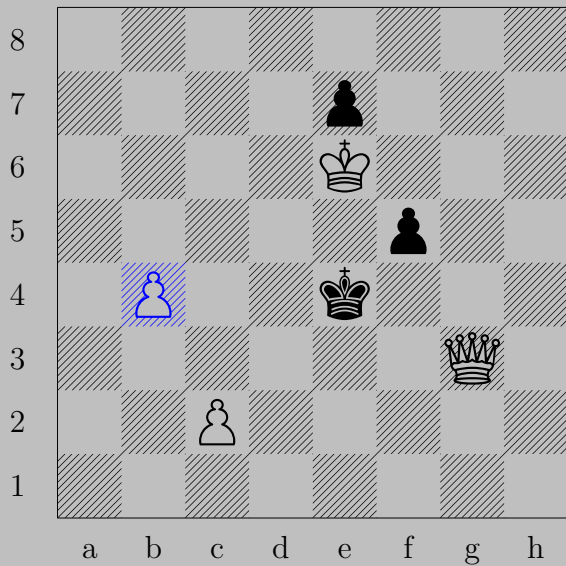


♙b7+

If ♔d4, ♙e4. If ♔d6, ♞c4.

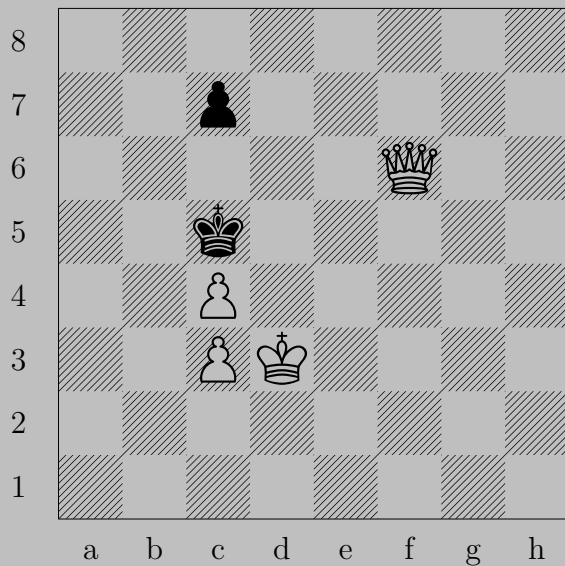


3194



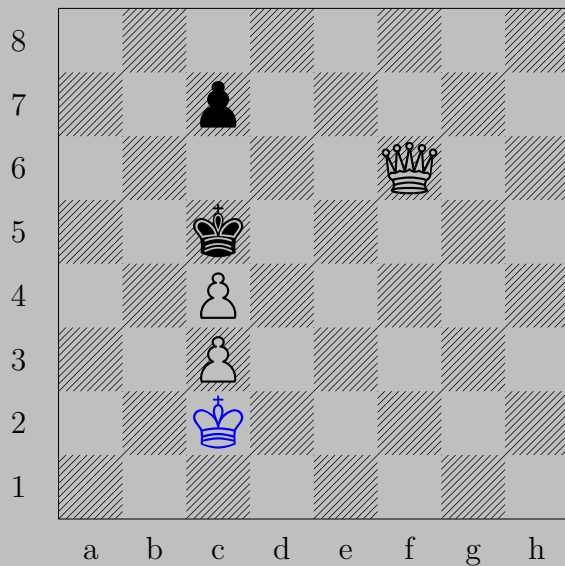
♖b4, ♔d4 or ♖f4
♕d3

3195



E. Szentgyörgyi, 1933

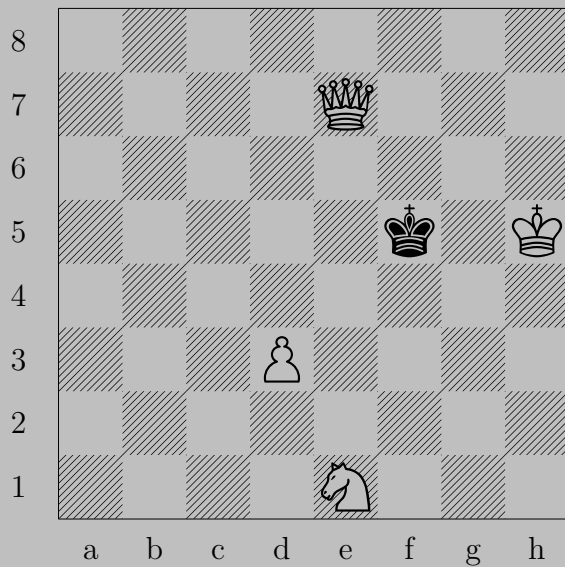
3195



♙c2

If ♙xc4, ♔c6. If ♙c6, ♔d4.

3196



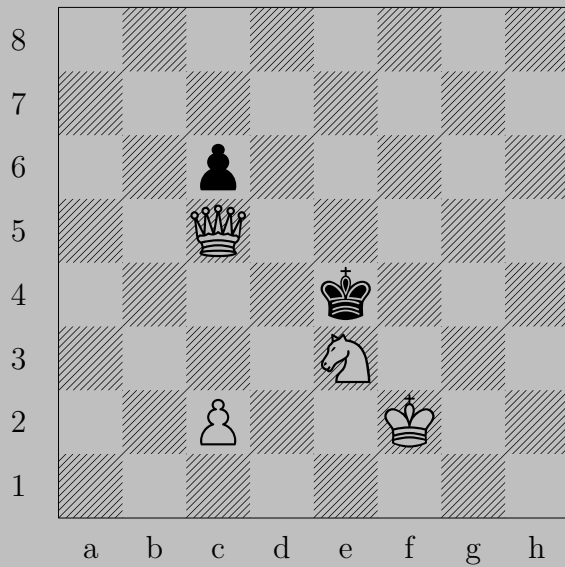
E. Szentgyörgyi, 1933

3196



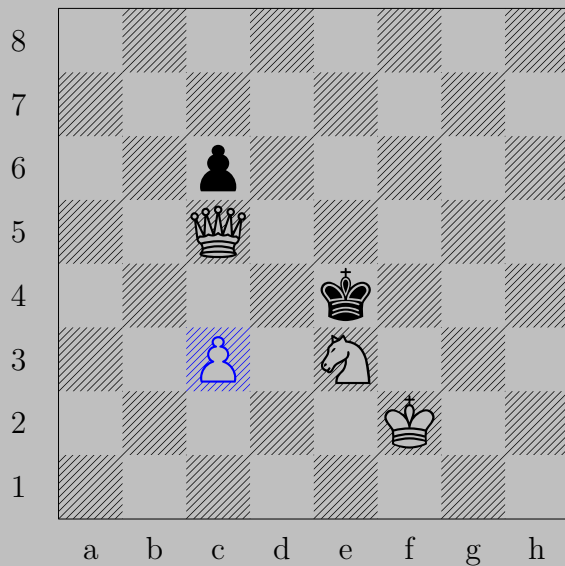
♙d4, ♔f4
♚e5

3197



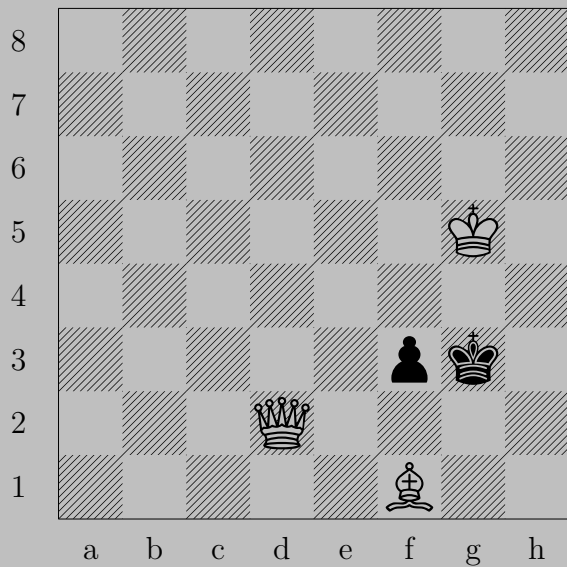
E. Szentgyörgyi, 1933

3197

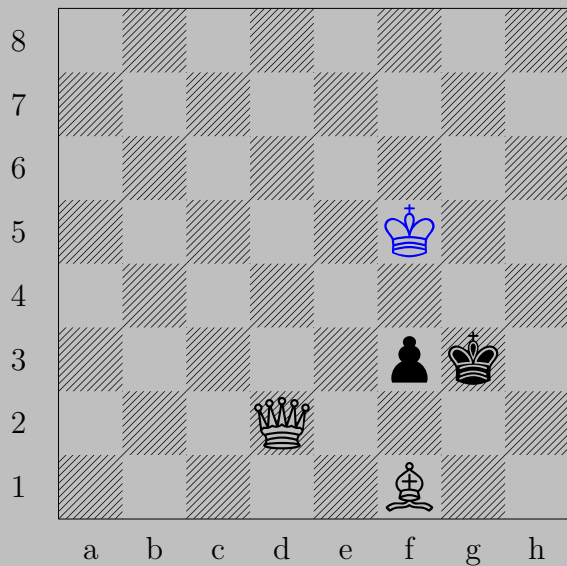


♙c3

If ♔d3, ♕d4. If ♔f4, ♕f5.



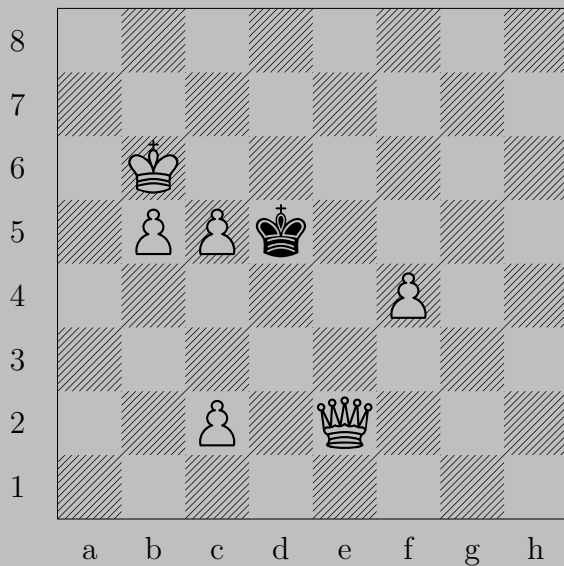
3198



♔f5

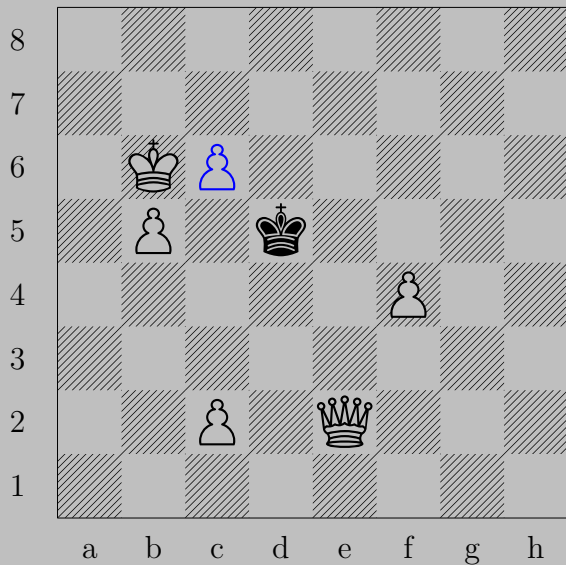
If ♕f2, ♖f4. If ♔h4, ♖h2.

3199



E. Szentgyörgyi, 1933

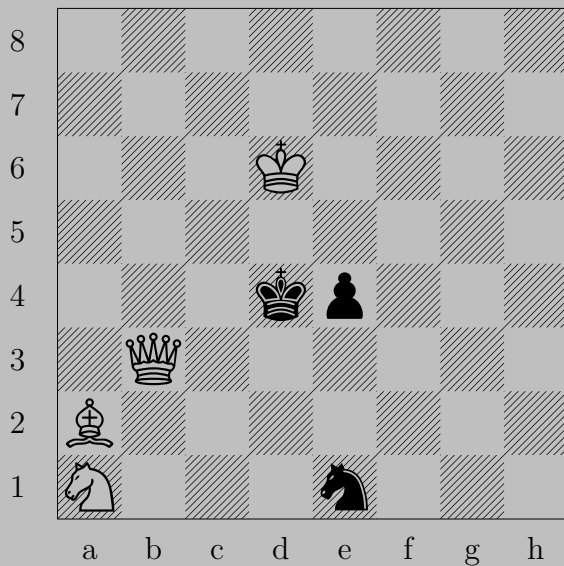
3199



♖c6

If ♔d4, ♕d3. If ♔d6, ♕e5.

3200



E. Szentgyörgyi, 1933

3200



♞b1

If ♜e3 , ♞b4 .

If ♞c2 , ♞xc2 . Otherwise, ♞c2 .