

Chess Puzzles

3001-3100

Mate in Two
White to Move

László Polgár

Links

| | | | | | | | | | |
|----------------------|----------------------|----------------------|----------------------|----------------------|----------------------|----------------------|----------------------|----------------------|----------------------|
| 3001 | 3002 | 3003 | 3004 | 3005 | 3006 | 3007 | 3008 | 3009 | 3010 |
| 3011 | 3012 | 3013 | 3014 | 3015 | 3016 | 3017 | 3018 | 3019 | 3020 |
| 3021 | 3022 | 3023 | 3024 | 3025 | 3026 | 3027 | 3028 | 3029 | 3030 |
| 3031 | 3032 | 3033 | 3034 | 3035 | 3036 | 3037 | 3038 | 3039 | 3040 |
| 3041 | 3042 | 3043 | 3044 | 3045 | 3046 | 3047 | 3048 | 3049 | 3050 |
| 3051 | 3052 | 3053 | 3054 | 3055 | 3056 | 3057 | 3058 | 3059 | 3060 |
| 3061 | 3062 | 3063 | 3064 | 3065 | 3066 | 3067 | 3068 | 3069 | 3070 |
| 3071 | 3072 | 3073 | 3074 | 3075 | 3076 | 3077 | 3078 | 3079 | 3080 |
| 3081 | 3082 | 3083 | 3084 | 3085 | 3086 | 3087 | 3088 | 3089 | 3090 |
| 3091 | 3092 | 3093 | 3094 | 3095 | 3096 | 3097 | 3098 | 3099 | 3100 |

3001



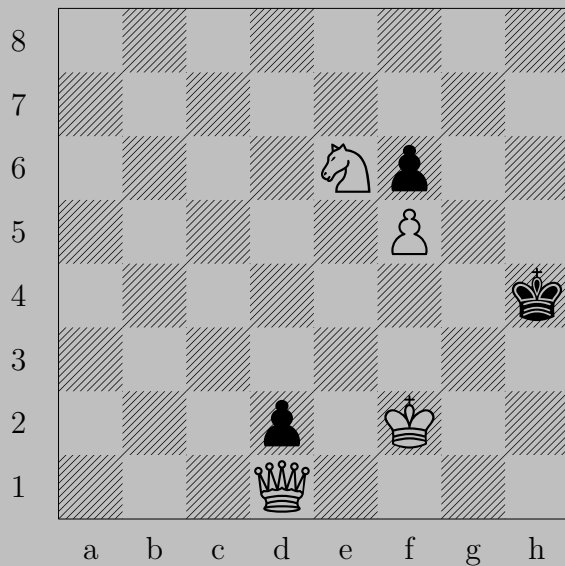
E. Szentgyörgyi, 1930

3001



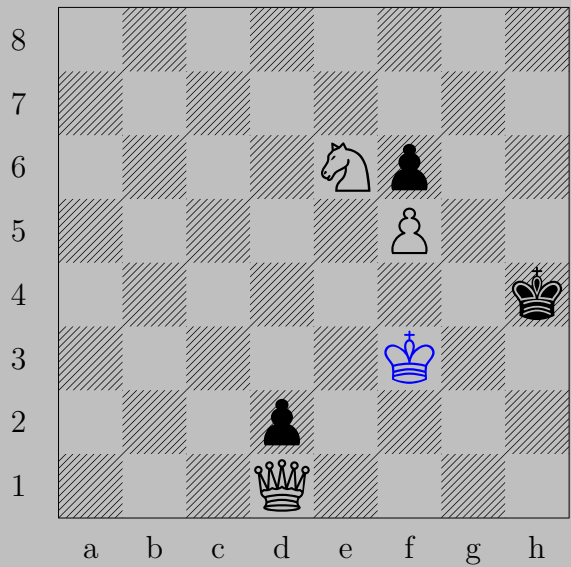
♙c5+, ♚xd7
♞f6

3002



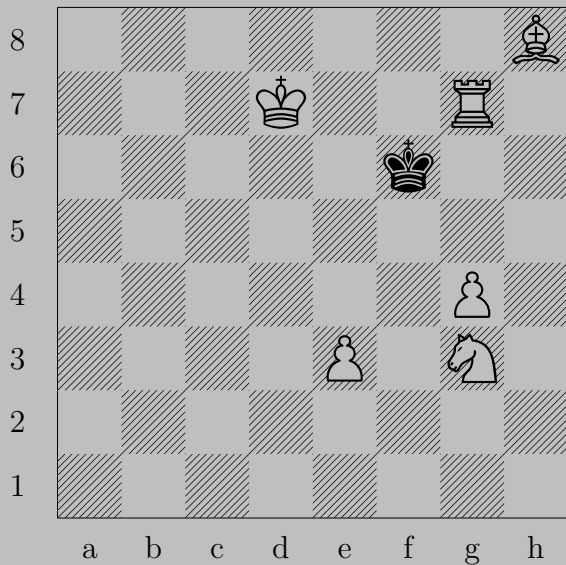
E. Szentgyörgyi, 1930

3002



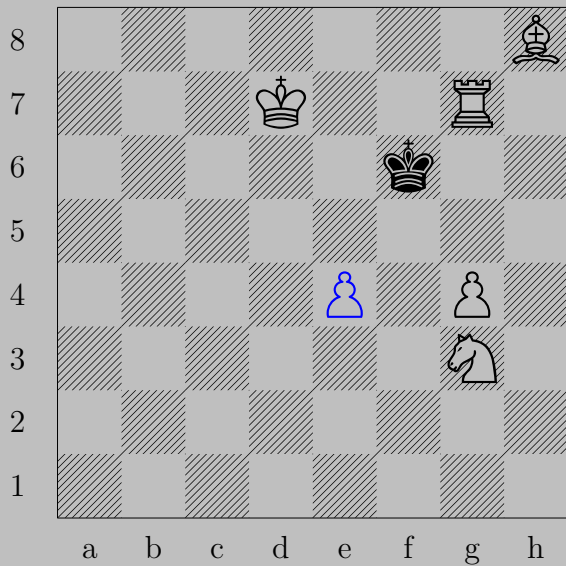
♔f3, ♔h3 or ♔h5
♔h1

3003



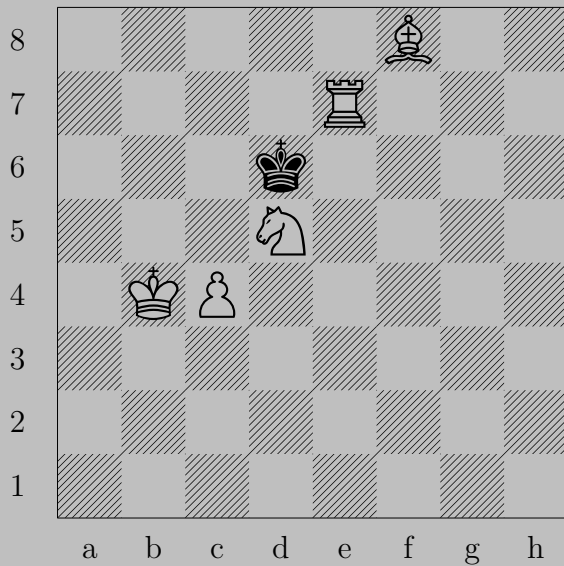
E. Szentgyörgyi, 1930

3003



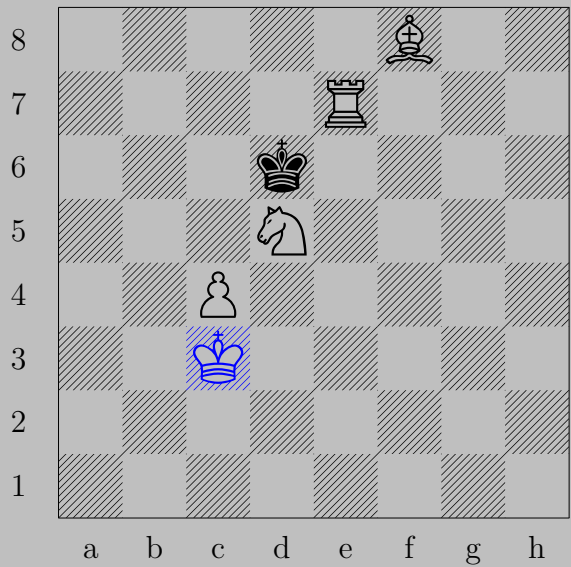
♙e4, ♔e5
♖f7

3004



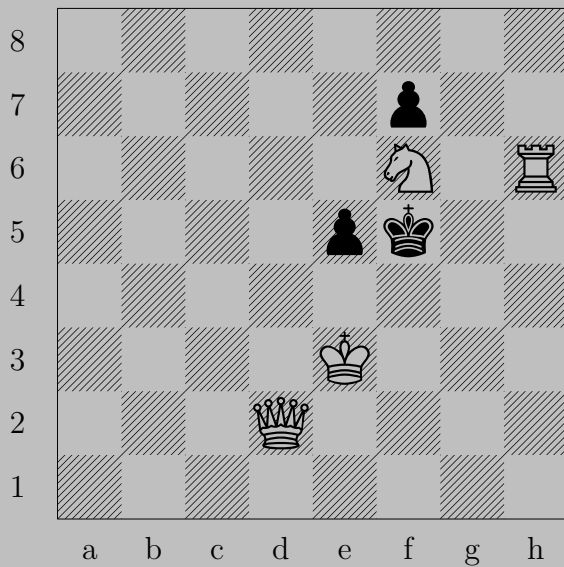
E. Szentgyörgyi, 1930

3004



♔c3, ♔c5 or ♔c6
♖c7

3005



E. Szentgyörgyi, 1930

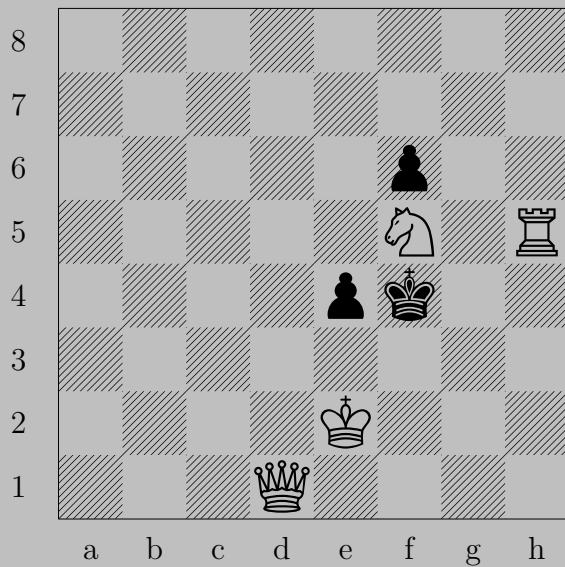
3005



♙d1

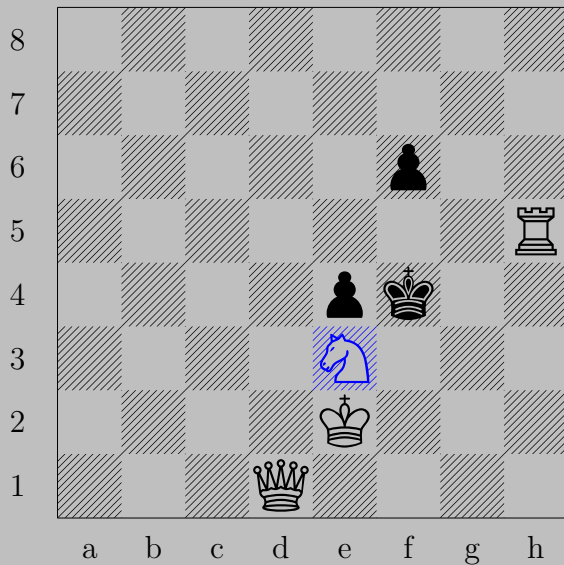
If ♖e4 or ♙g5, ♚h5. If ♚e6, ♙d7.

3006



E. Szentgyörgyi, 1930

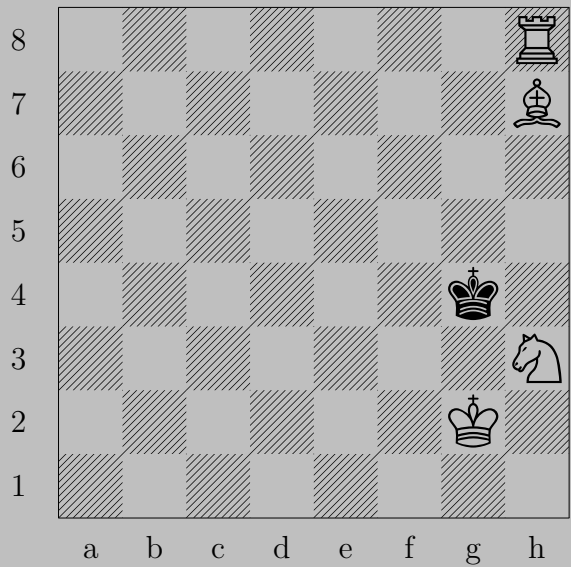
3006



♞d3, ♠f5 or ♔g3

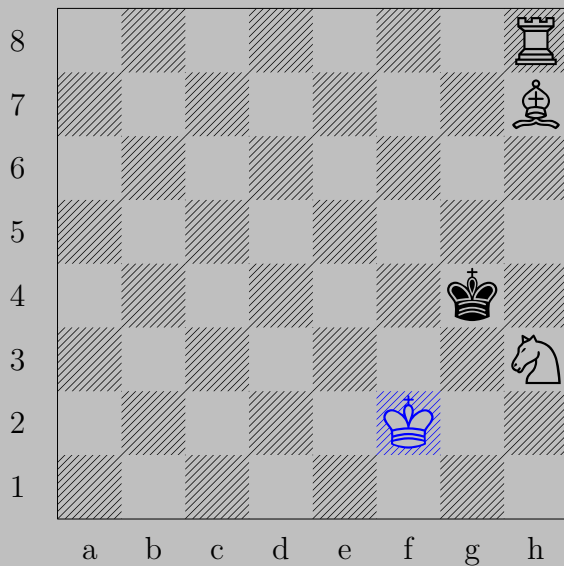
♚d6

3007



E. Szentgyörgyi, 1930

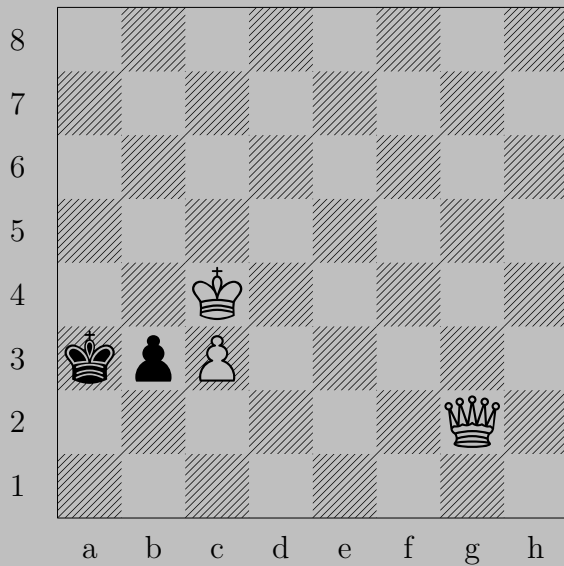
3007



♔f2, ♖xh3 or ♔h4 or ♔h5

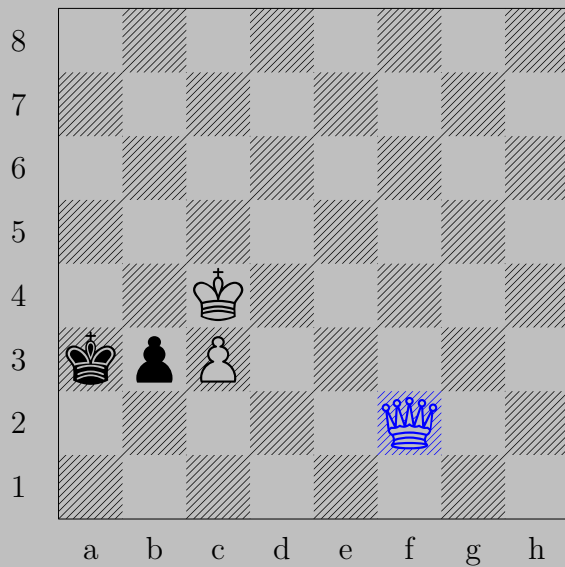
♘f5

3008



E. Szentgyörgyi, 1930

3008



♔f2, ♖b2 or ♔a4

♔a7

3009



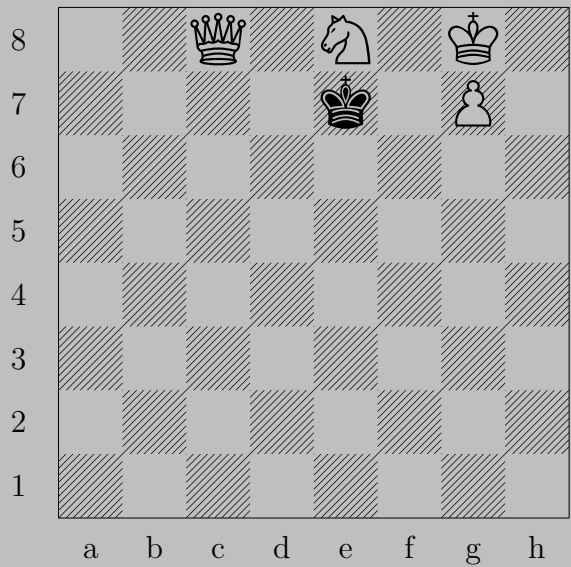
E. Szentgyörgyi, 1930

3009



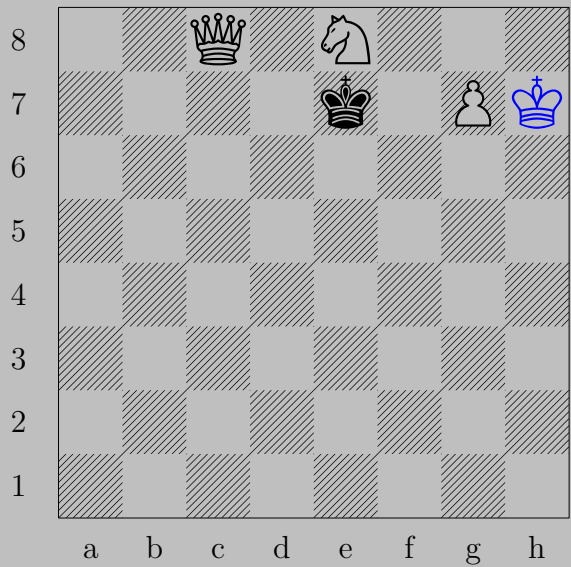
♖h1, ♔g5
♙h4

3010



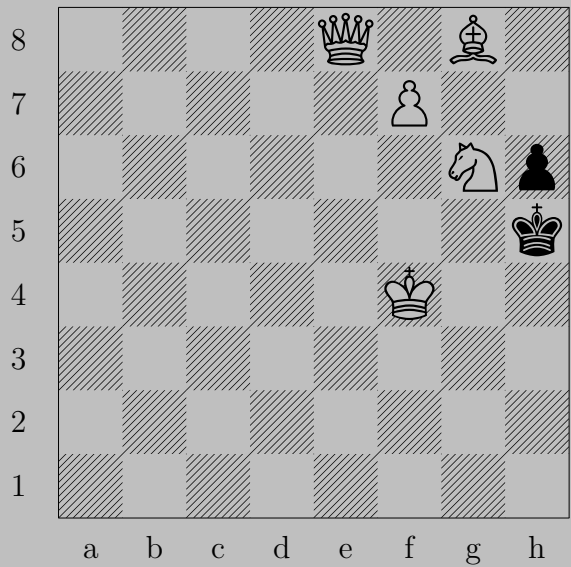
E. Szentgyörgyi, 1930

3010



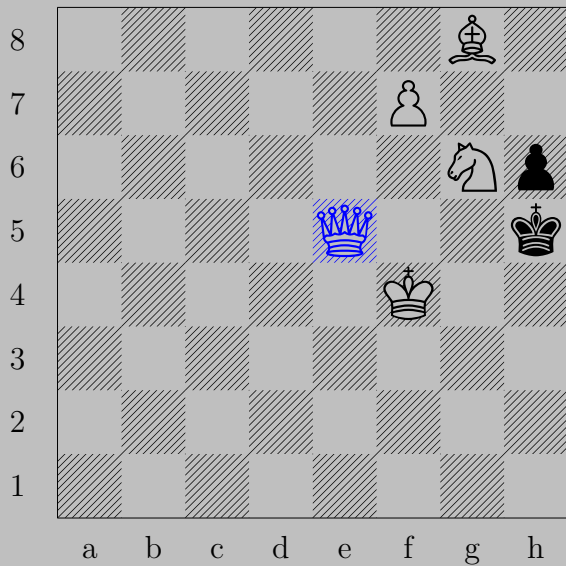
♔h7, ♔f7
♚d7

3011



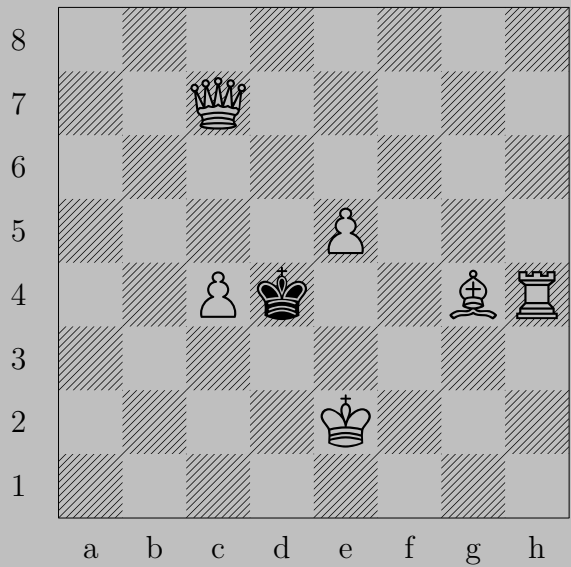
E. Szentgyörgyi, 1931

3011



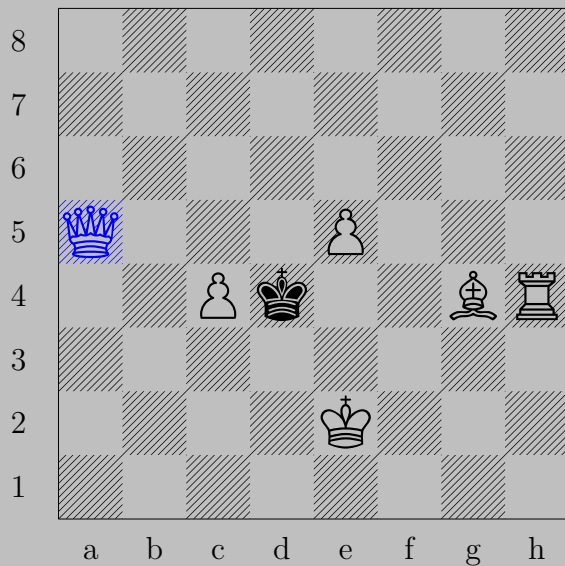
♙e5+, ♚xg6
♘f8(♘)

3012



E. Szentgyörgyi, 1931

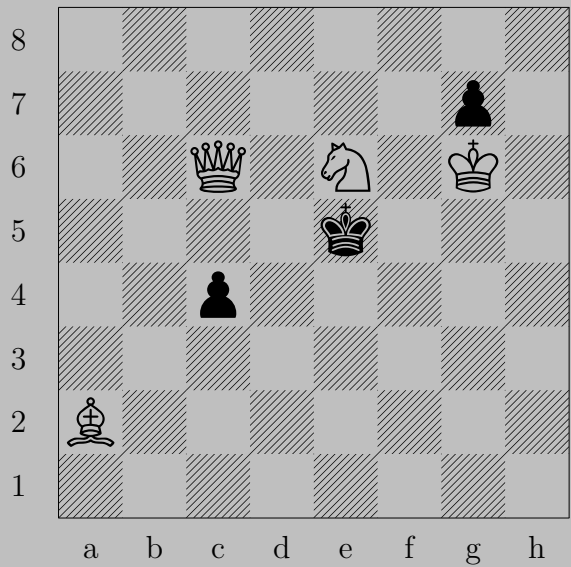
3012



♙a5

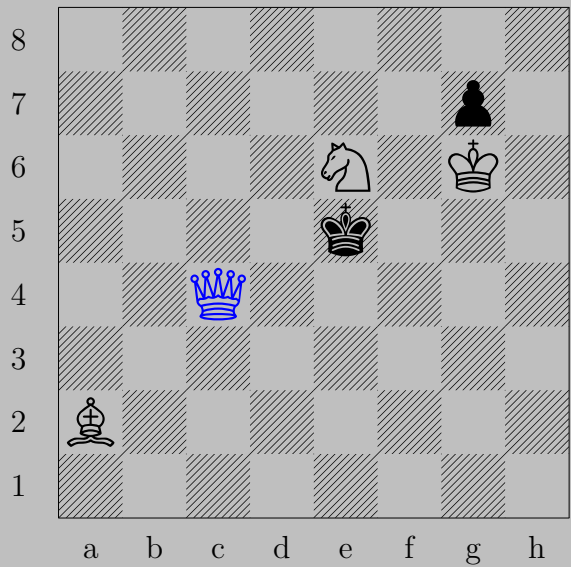
If ♗xc4, ♕e6. If ♙e4, ♕h3.

3013



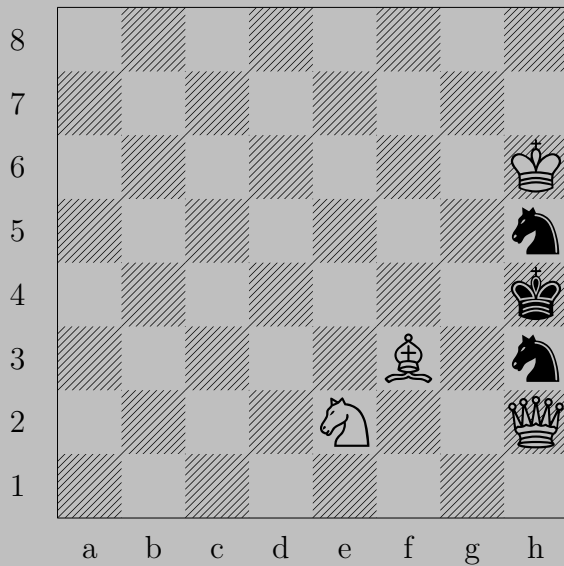
E. Szentgyörgyi, 1931

3013



♙×c4, ♚d6
♙c7

3014



E. Szentgyörgyi, 1931

3014

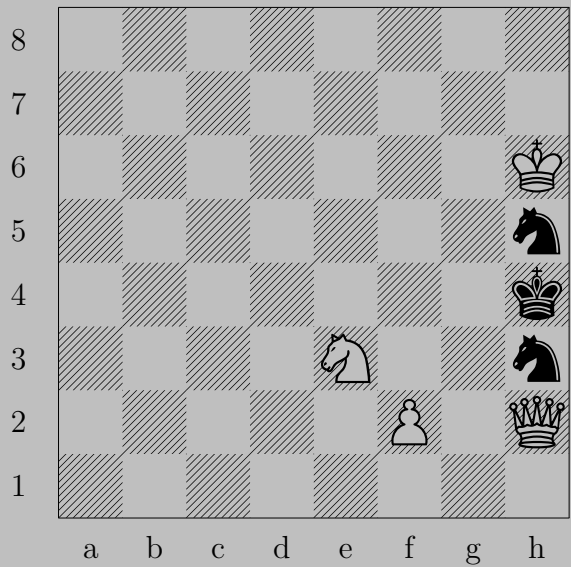


♔g2

If ♞(h5)f4 , ♕g3 .

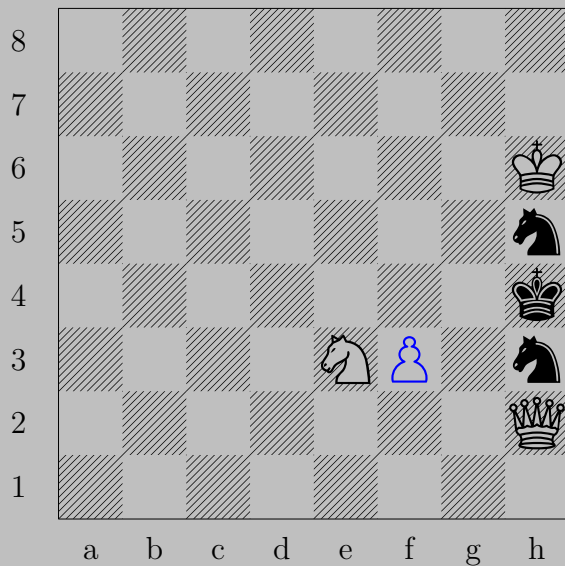
Otherwise, ♕xh3 .

3015



E. Szentgyörgyi, 1931

3015

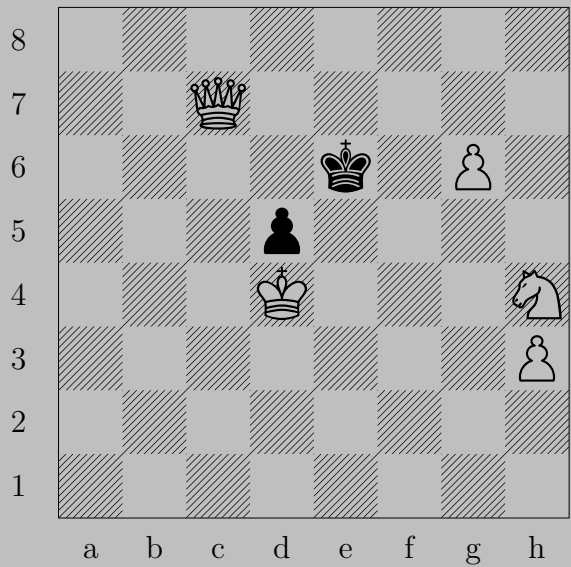


$\Delta f3$

If $\Delta(h5)f4$, $\Delta f5$.

Otherwise, $\Delta g2$.

3016



E. Szentgyörgyi, 1931

3016



♞f3, ♔f5 or ♔f6
♔f7

3017



E. Szentgyörgyi, 1931

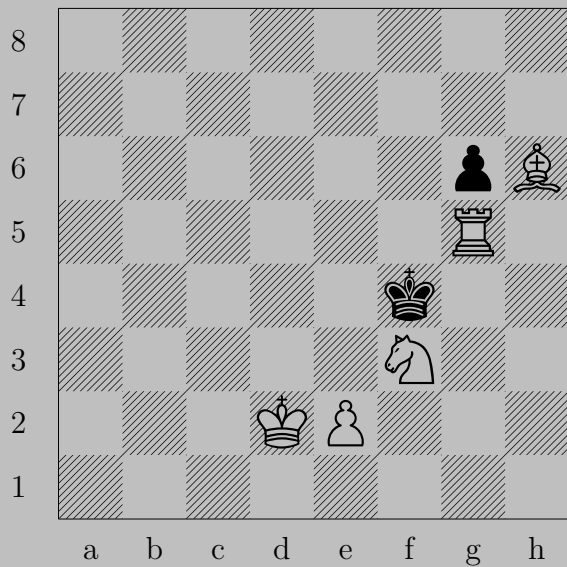
3017



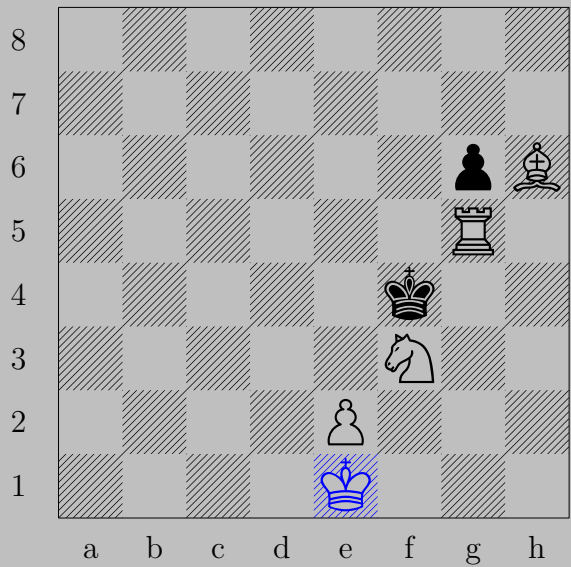
♙a4

If ♔b4, ♚b5.

If ♞c5, ♚xc5. Otherwise, ♚c5.

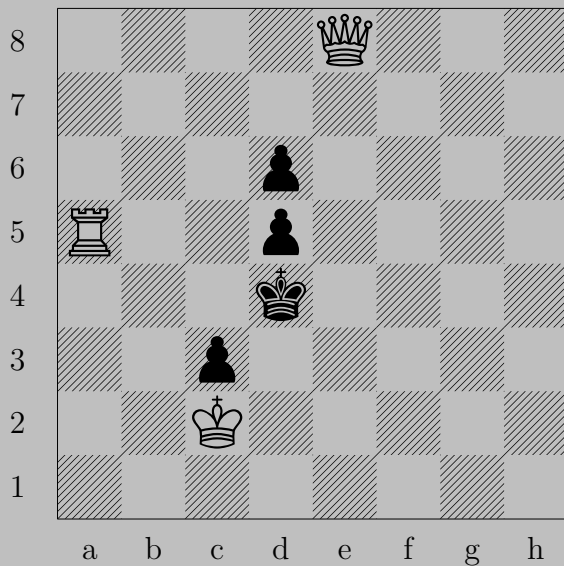


3018



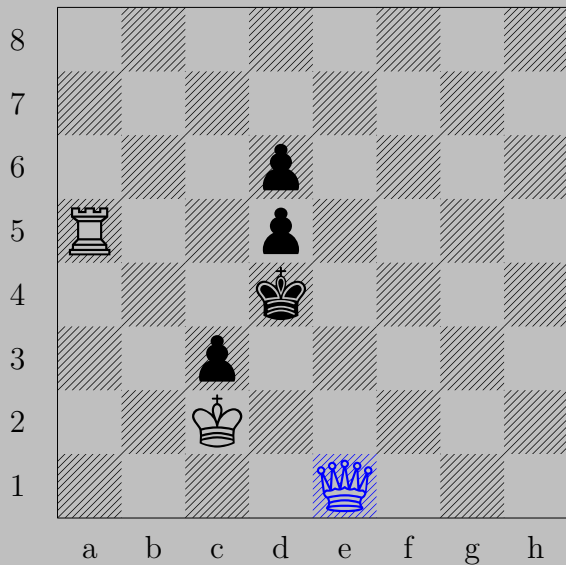
♔e1, ♕e3 or ♖e4
♖e5

3019



E. Szentgyörgyi, 1931

3019



♔e1, ♔c4

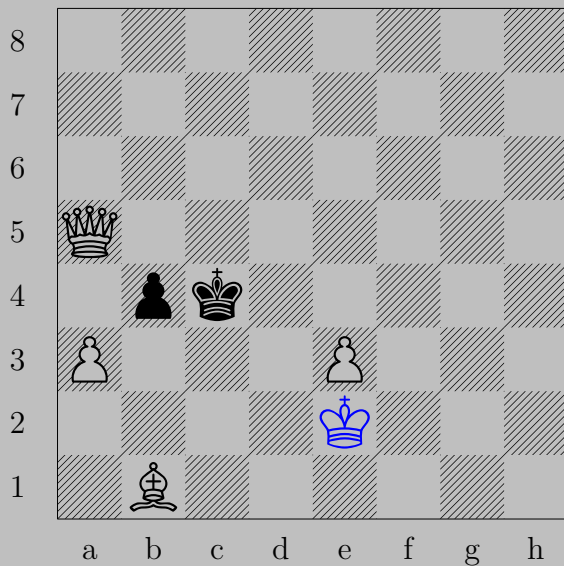
♔×c3

3020



E. Szentgyörgyi, 1931

3020



♔e2

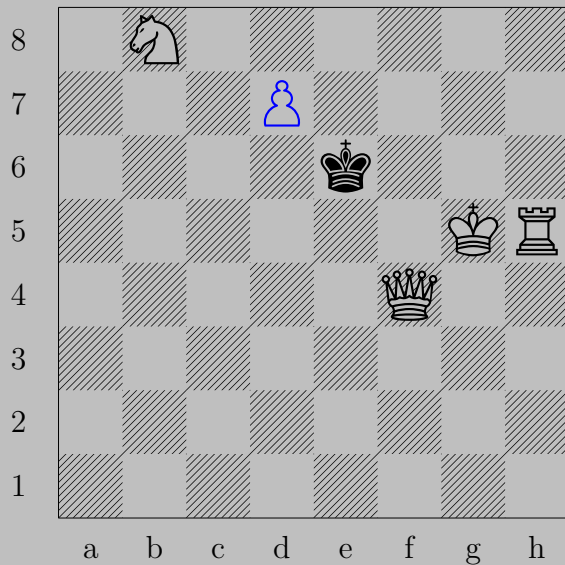
If ♖xa3, ♙a2. If ♖b3, ♙d3. If ♔b3 or ♔c3, ♙xb4.

3021



E. Szentgyörgyi, 1931

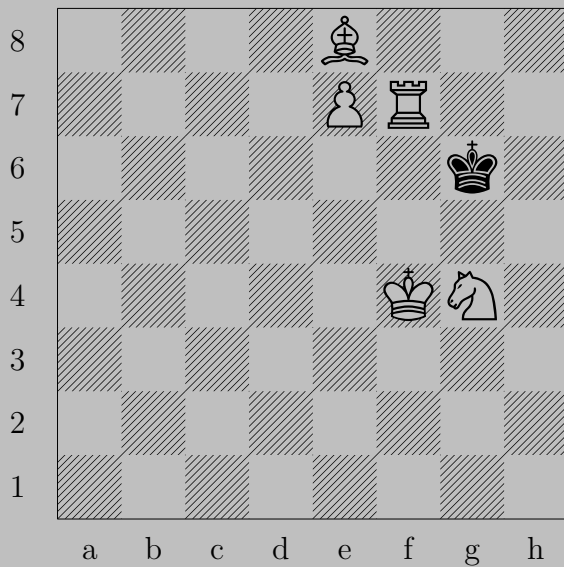
3021



♖d7

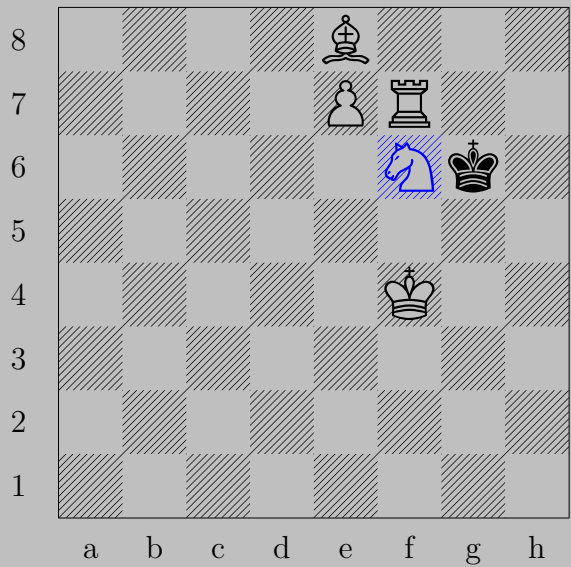
If ♔d5, ♕f6. If ♔e7, ♖f6.

3022



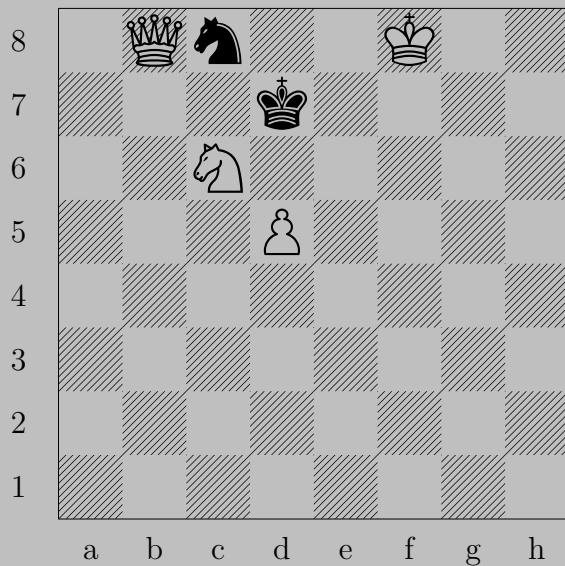
E. Szentgyörgyi, 1925

3022



♞f6 , ♔h6
 ♖h7

3023



E. Szentgyörgyi, 1925

3023

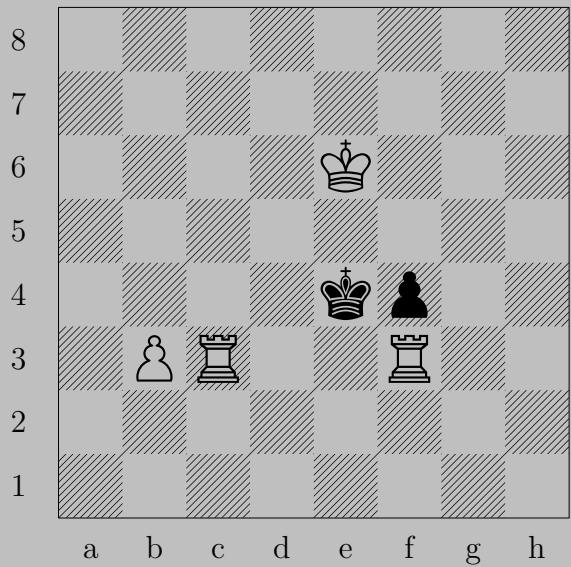


♔g7

If ♔e8, ♚xc8.

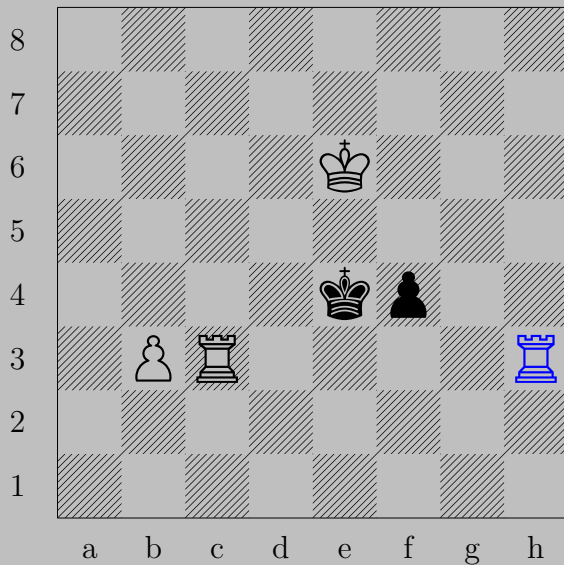
Otherwise, ♚d8.

3024



E. Szentgyörgyi, 1925

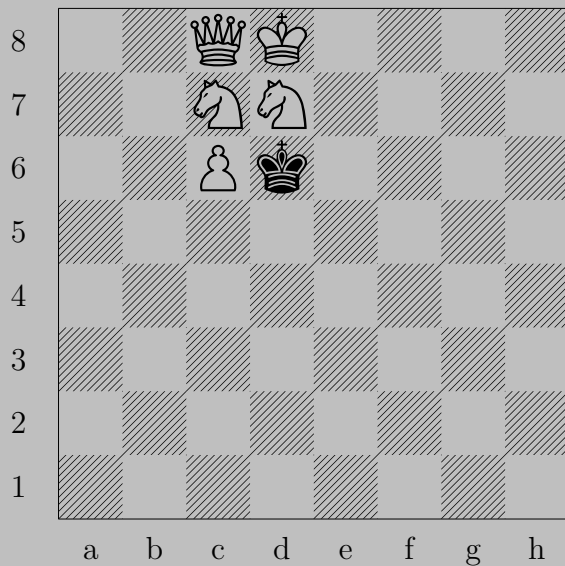
3024



$\text{R}h3$

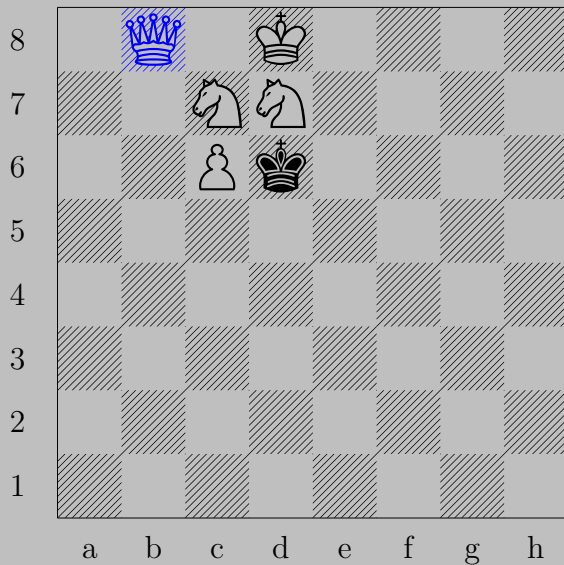
If $\text{P}f3$, $\text{R}h4$. If $\text{K}d4$, $\text{R}c4$.




3025



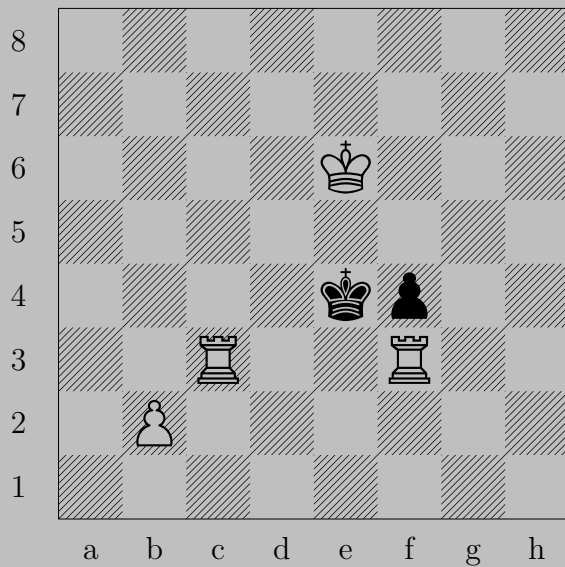
E. Szentgyörgyi, 1925

3025



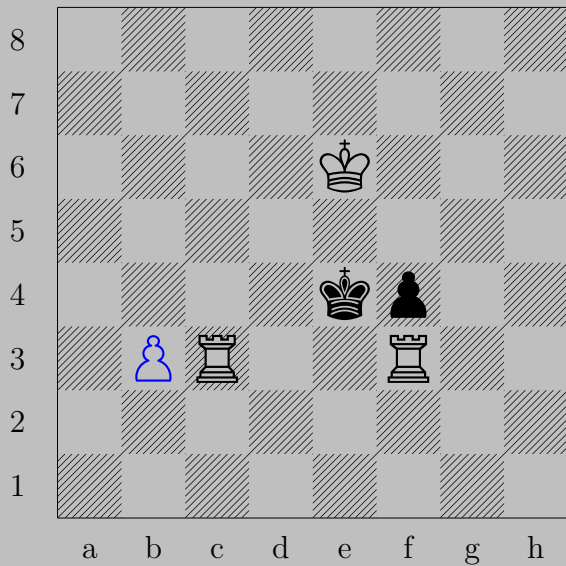
b8, xc6
b6

3026



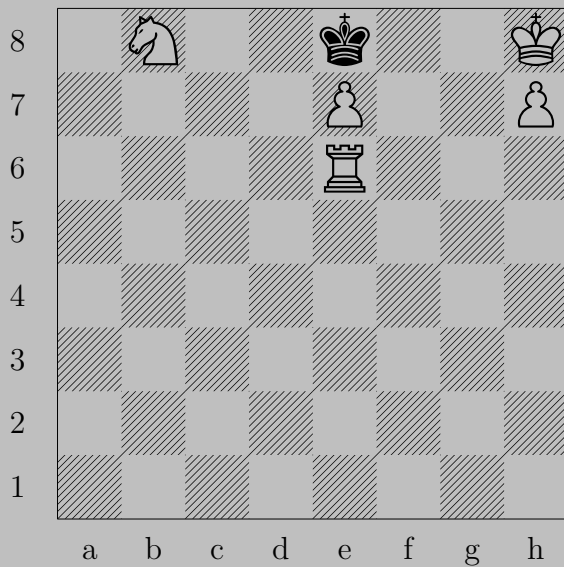
E. Szentgyörgyi, 1925

3026



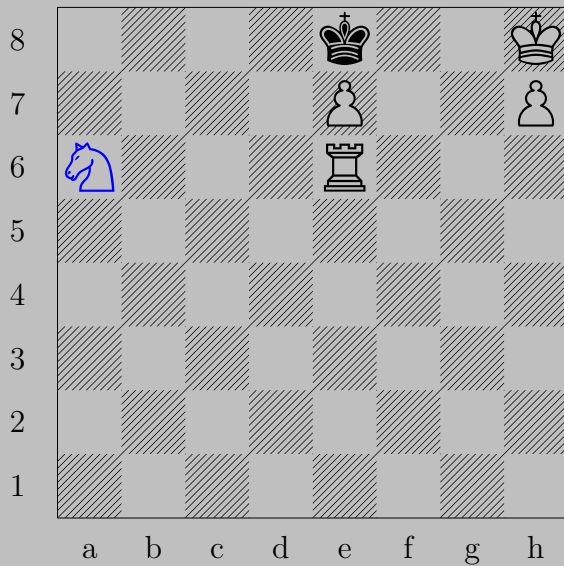
♙b3, ♔d4
♖c4

3027



E. Szentgyörgyi, 1925

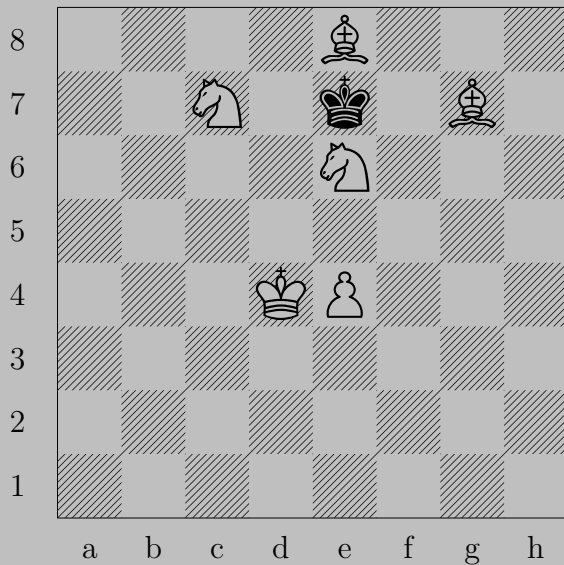
3027



♞a6 , ♔d7 or ♔f7

♙e8 (♔)

3028



E. Szentgyörgyi, 1925

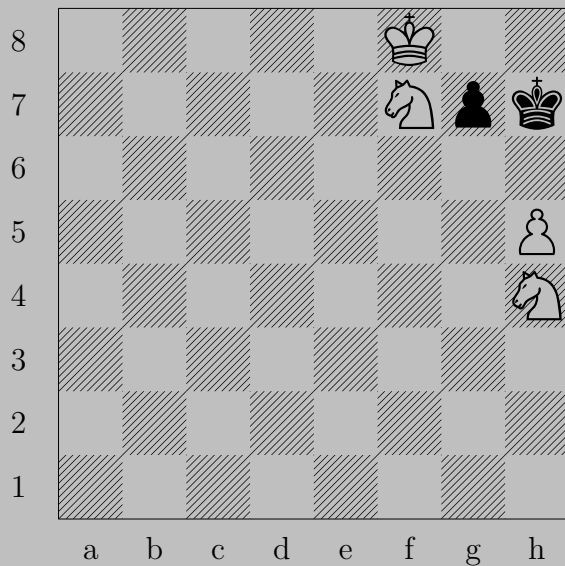
3028



♘h6

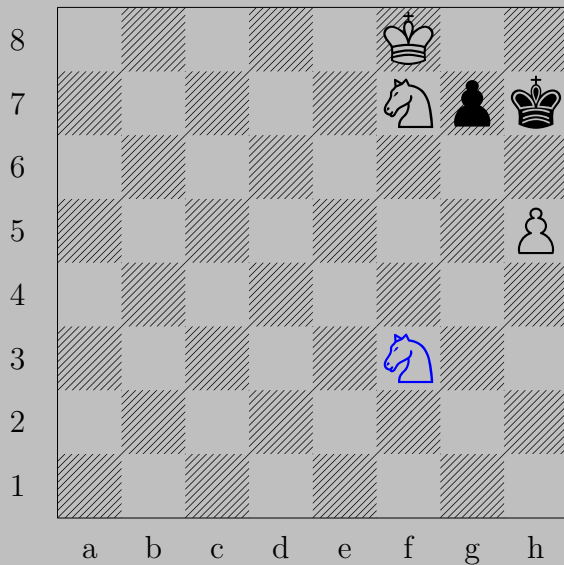
If ♔d6, ♘f8. If ♔f6, ♘g5.

3029



E. Szentgyörgyi, 1925

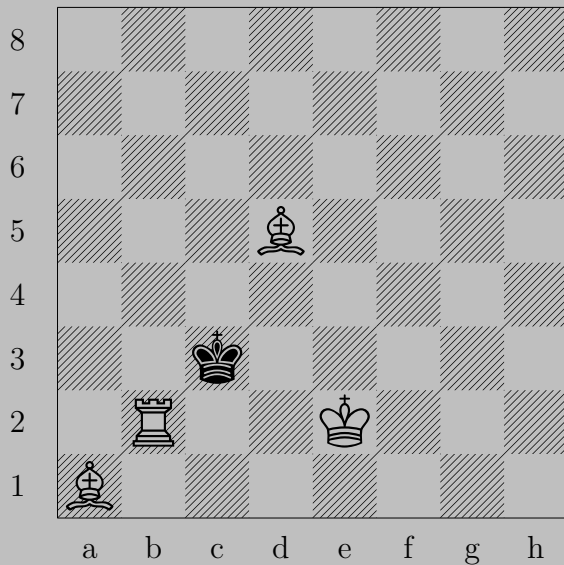
3029



♞f3

If ♙g6 , ♞g5 . If ♙g5 , $\text{♞}\times\text{g5}$.

3030



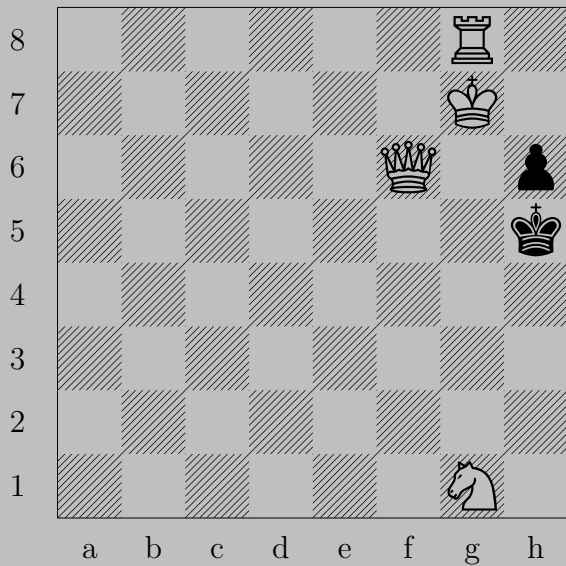
E. Szentgyörgyi, 1926

3030



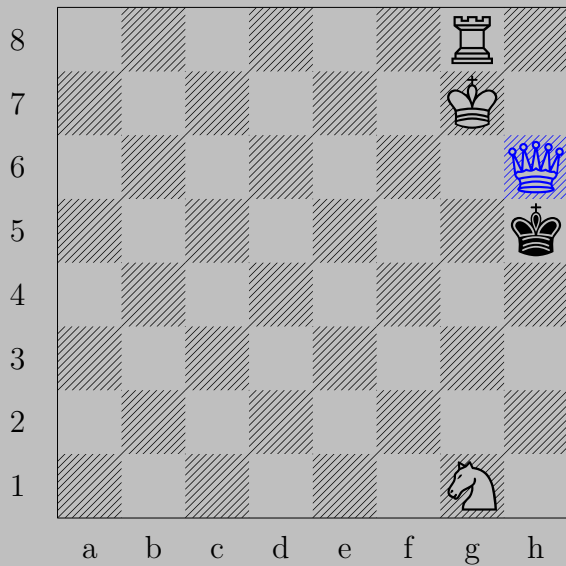
$\text{♖b1+}, \text{♔c2}$
 ♘e4

3031



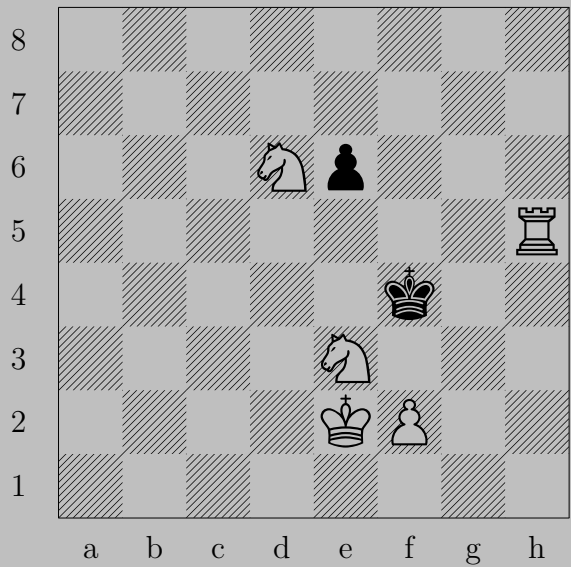
E. Szentgyörgyi, 1929

3031



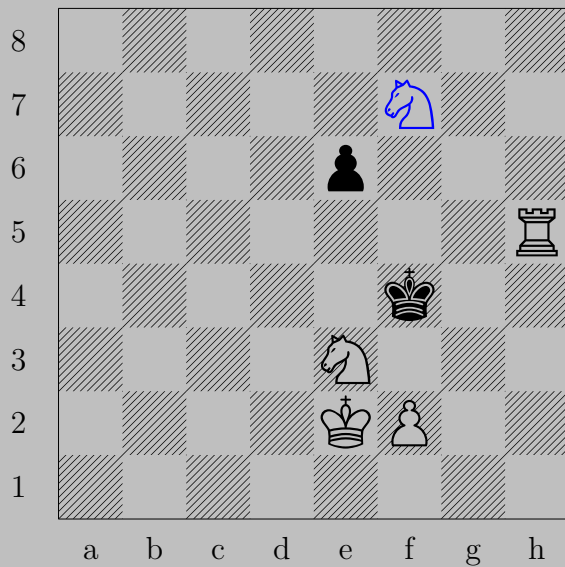
♙xh6+, ♔g4
♙f6

3032



E. Szentgyörgyi, 1926

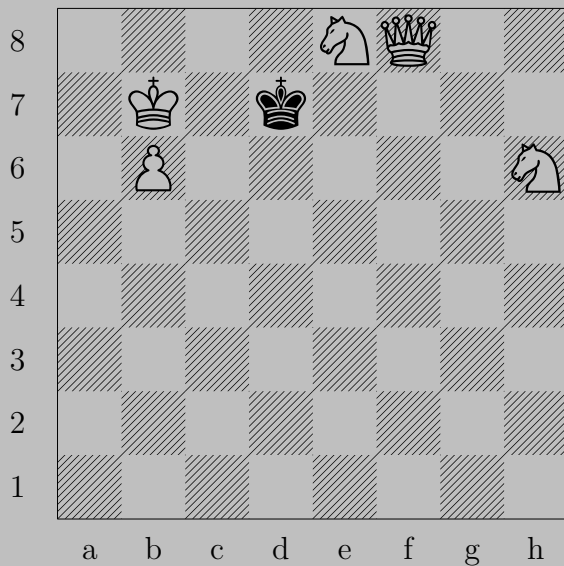
3032



Nf7 , Ke4 or Ke5

Rh4

3033



E. Szentgyörgyi, 1935

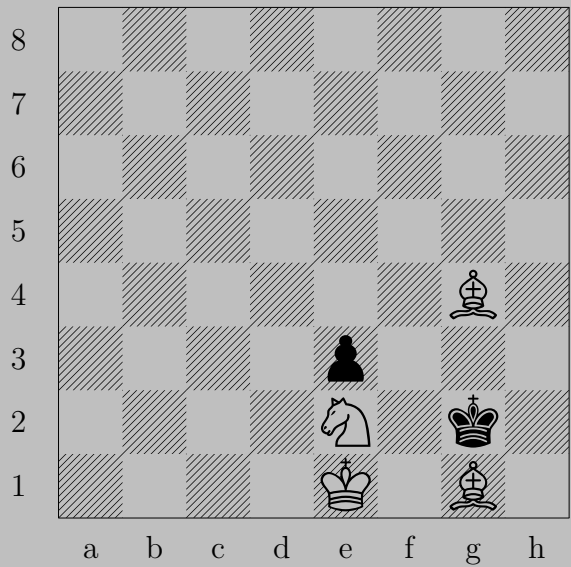
3033



♔a6

If ♔c6 or ♔e6, ♚d6. If ♔c8 or ♔d8, ♞f6.

3034



E. Szentgyörgyi, 1926

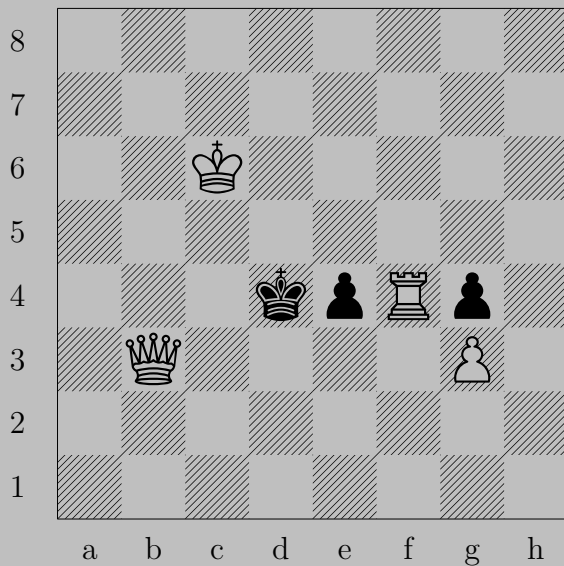
3034



♔d1

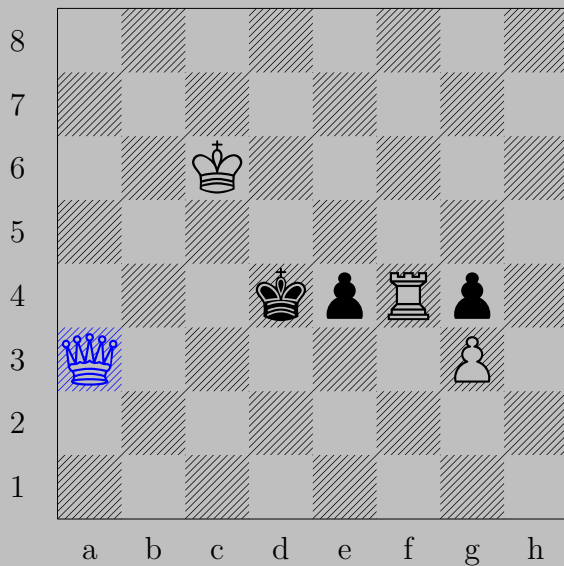
If ♔f1, ♘h3. If ♔h1, ♘f3.

3035



E. Szentgyörgyi, 1935

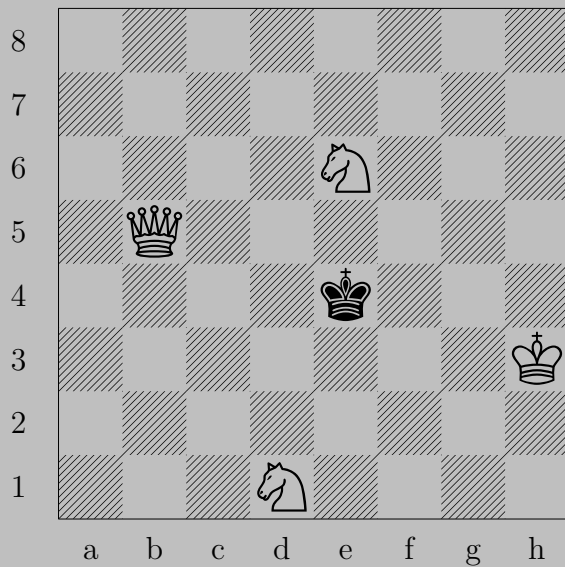
3035



♙a3

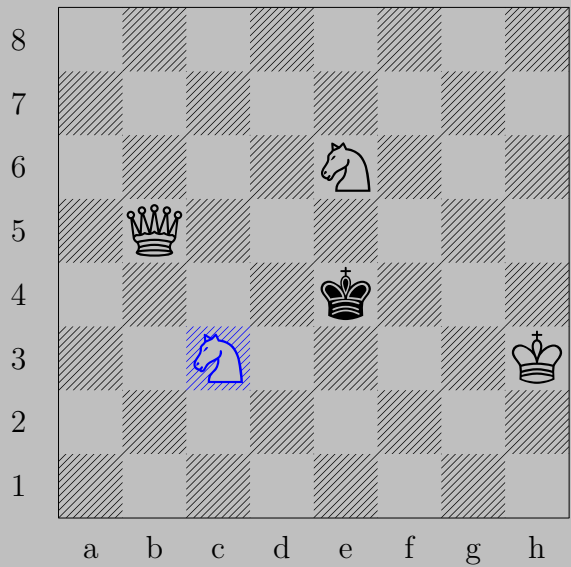
If ♔e5, ♙d6. If ♔c4, ♖xe4.

3036



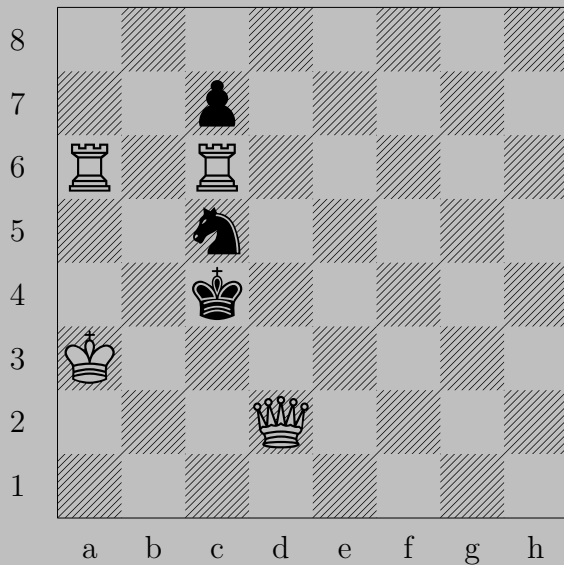
E. Szentgyörgyi, 1935

3036



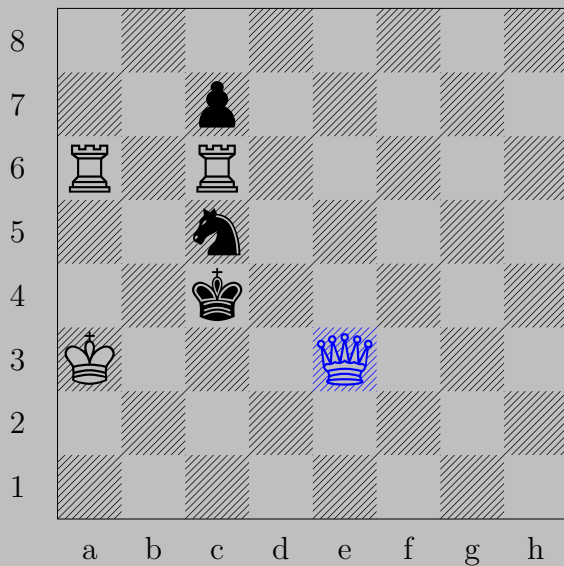
♞c3+ , ♔e3 or ♔f3
 ♕e2

3037



E. Szentgyörgyi, 1935

3037



♚e3

If ♔b5, ♚xc5. If ♔d5, ♖xc5.

3038



E. Szentgyörgyi, 1935

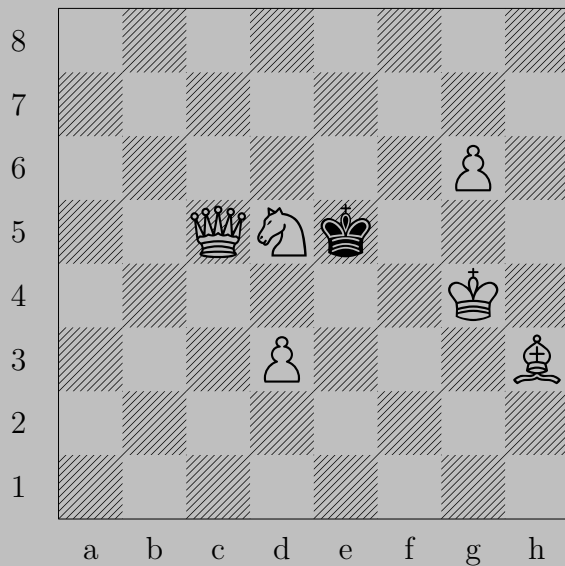
3038



♖d3

If ♖h5 or ♕f4, ♔g3. If ♕h5, ♘f3.




3039



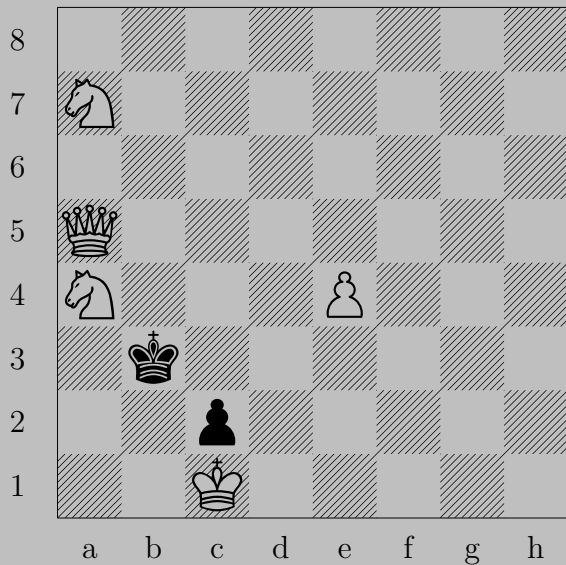
E. Szentgyörgyi, 1935

3039



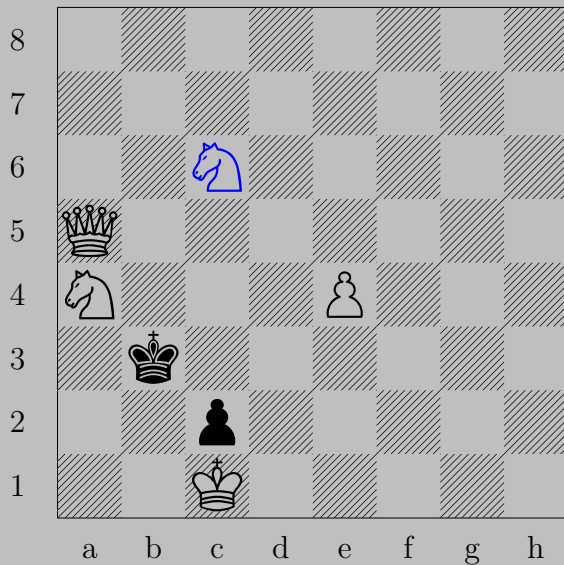
g2, e6
e7

3040



E. Szentgyörgyi, 1935

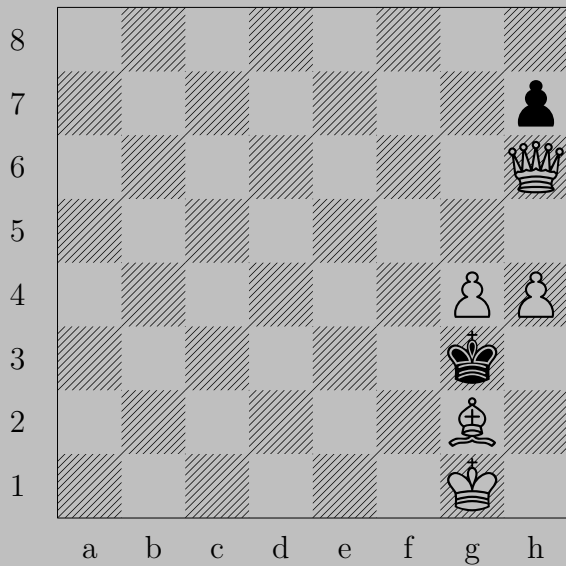
3040



Nc6

If Ka2 or Ka3 , Nc5 . If Kc4 , Qd5 .

3041



E. Szentgyörgyi, 1935

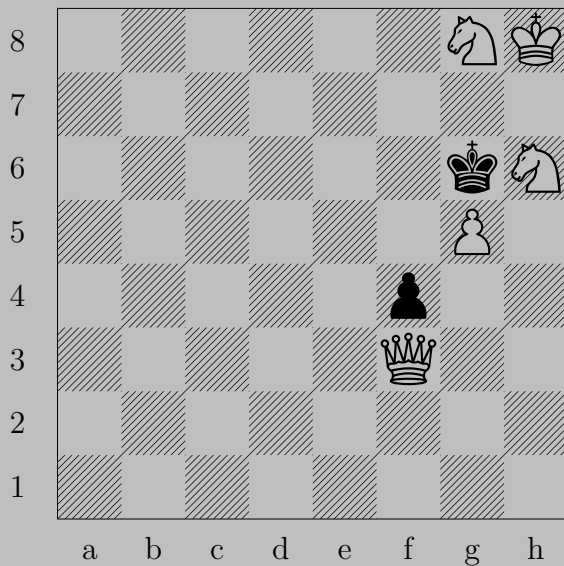
3041



♔f1

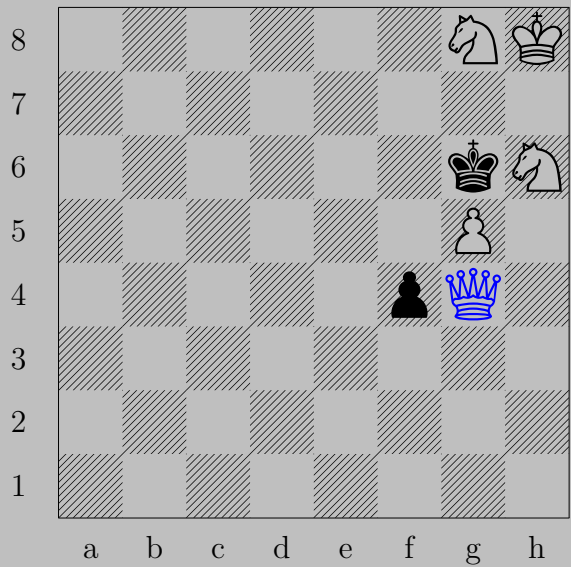
If ♕xg4, ♖g5. If ♔h2, ♖f4.

3042



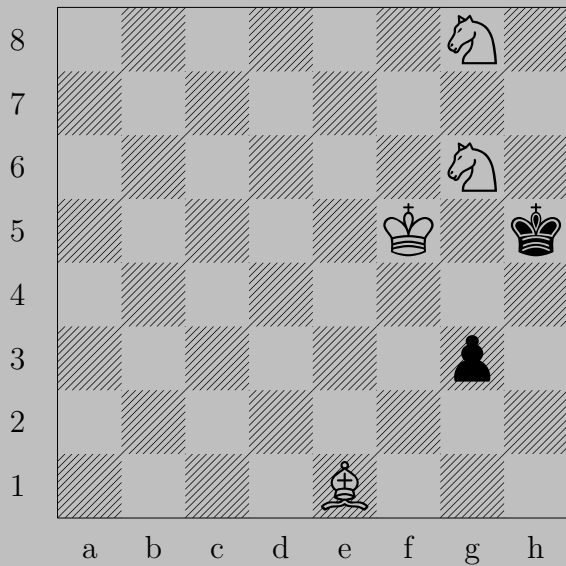
E. Szentgyörgyi, 1935

3042



♔g4, ♖f3
♞e7

3043



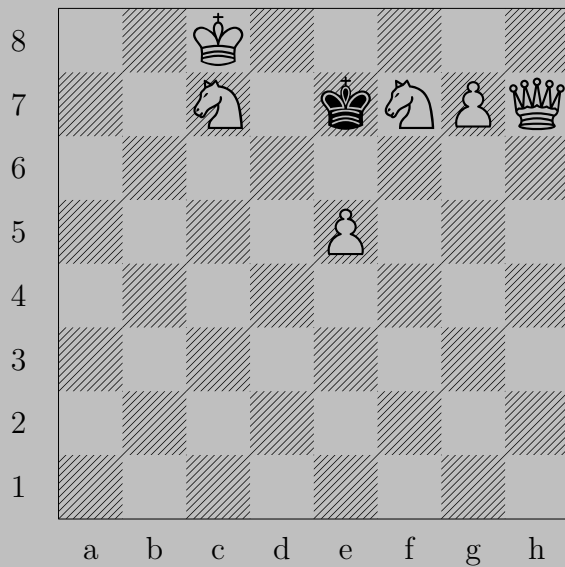
E. Szentgyörgyi, 1935

3043



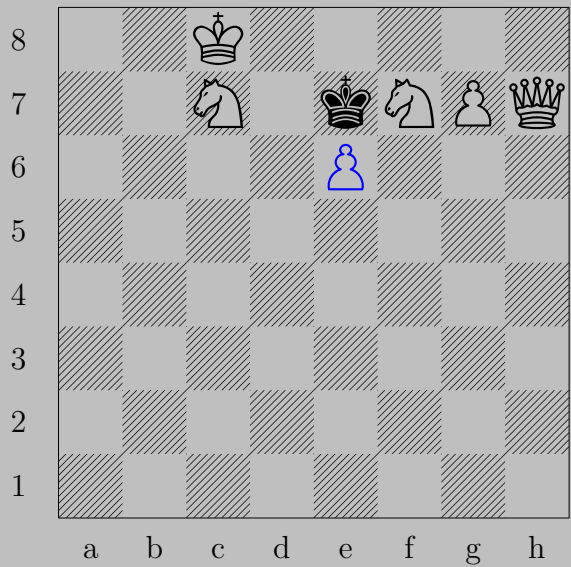
♔d2, ♖g2
♞f6

3044



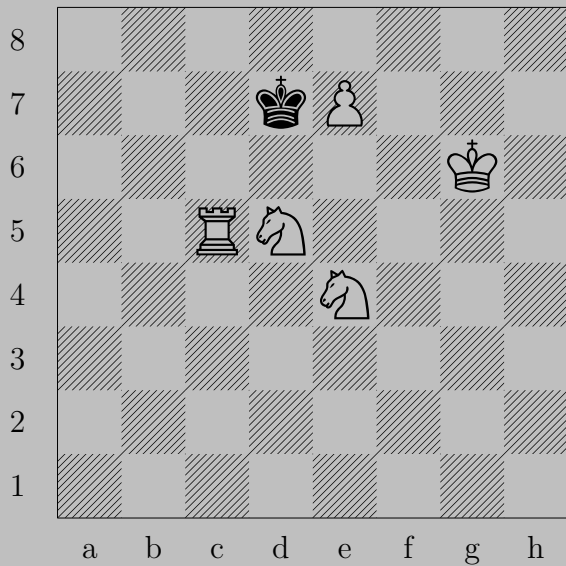
E. Szentgyörgyi, 1936

3044



♖e6, ♔f6
♖g8(♘)

3045



E. Szentgyörgyi, 1926

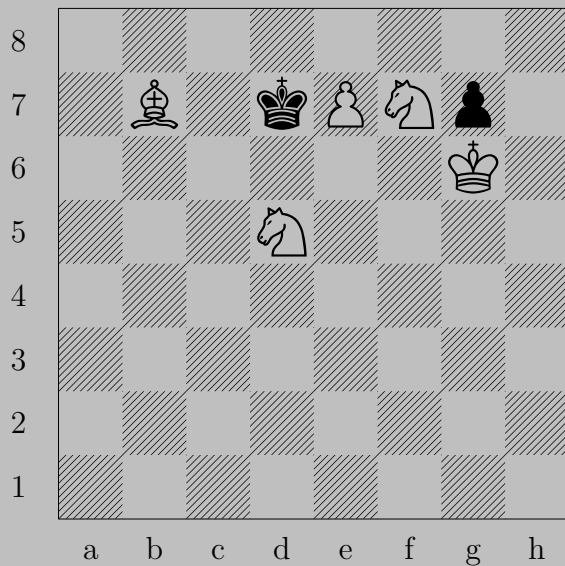
3045



Rb5

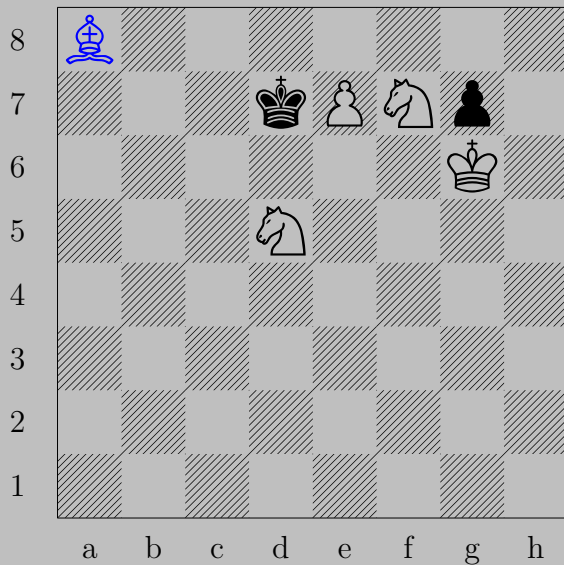
If Ke8 , N(e4)f6 . If Kc6 or Kc8 or Ke6 , Pe8 (Q)

3046



E. Szentgyörgyi, 1926

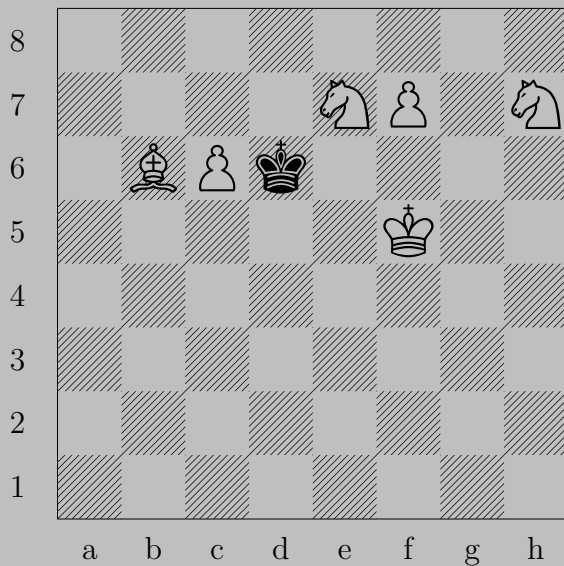
3046



♙a8

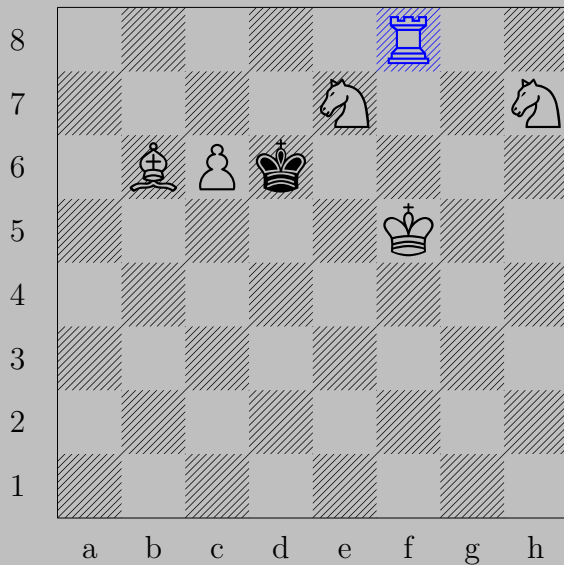
If ♚e8, ♙c6. If ♚c8 or ♚d6, ♖e8(♚).

3047



E. Szentgyörgyi, 1926

3047



$\triangleleft g8(\text{♔}), \text{♕} \times e7$
 $\text{♞} c5$

3048



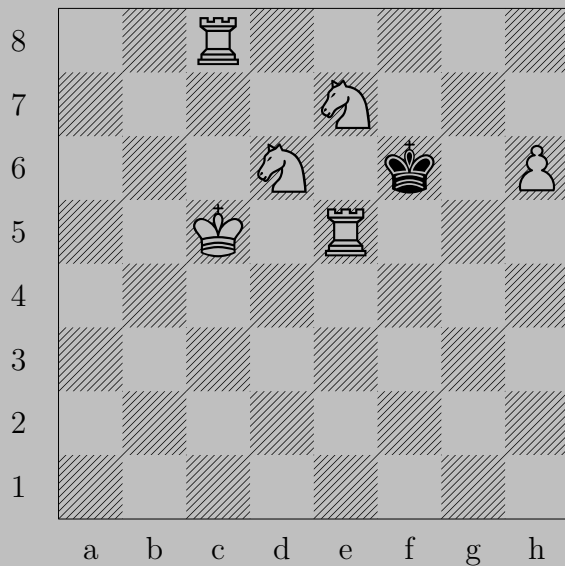
E. Szentgyörgyi, 1926

3048



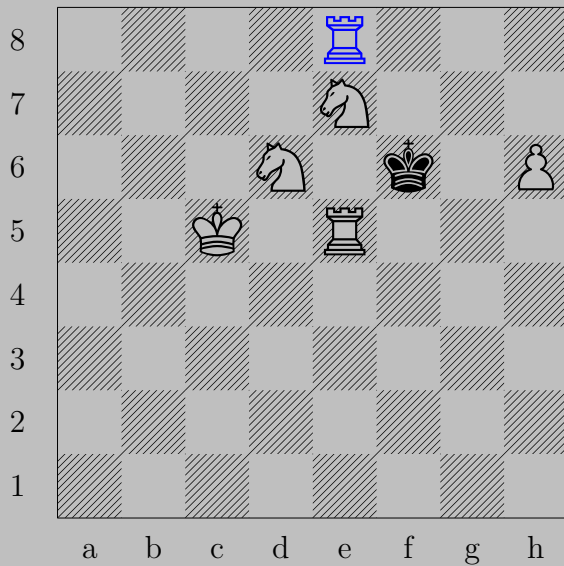
$\text{♖h7}, \text{♔f6}$
 $\text{♙g8}(\text{♖})$

3049



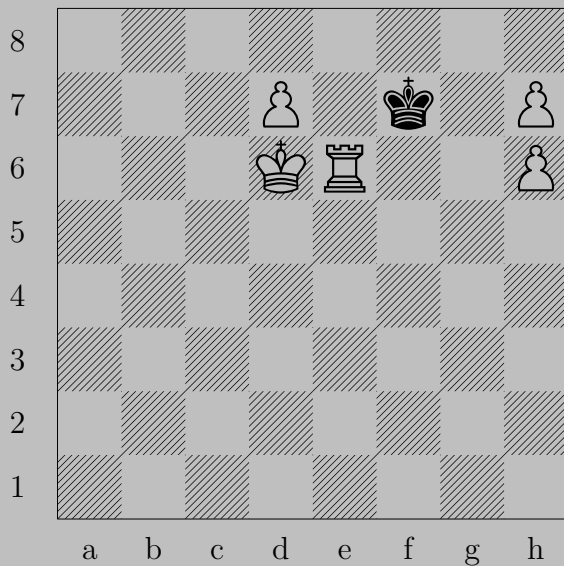
E. Szentgyörgyi, 1926

3049



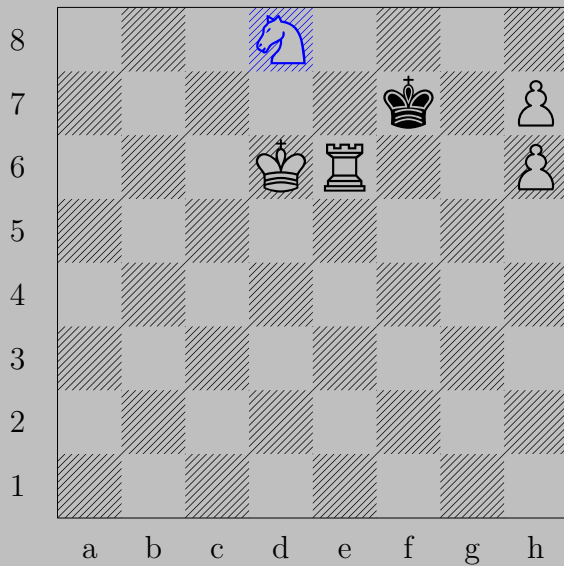
$\text{R}e8, \text{K}c5$
 $\text{N}d5$

3050



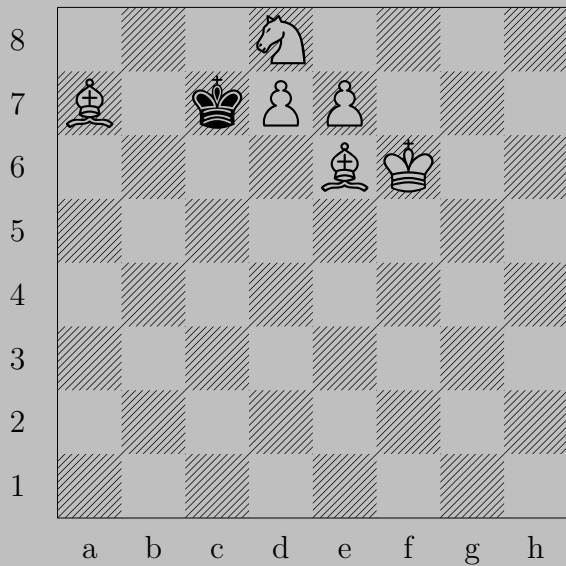
E. Szentgyörgyi, 1926

3050



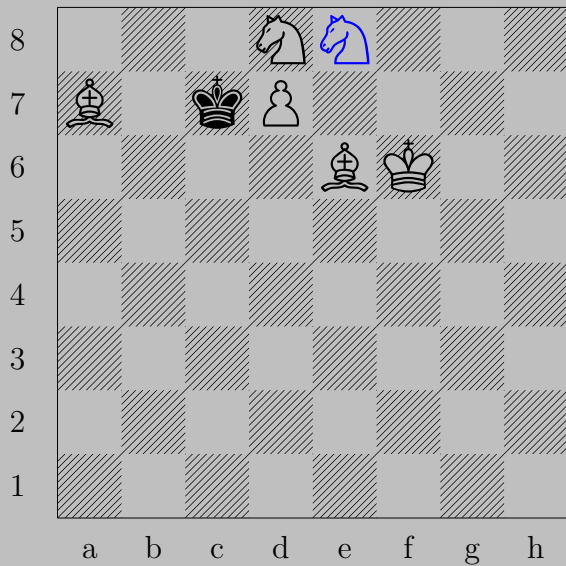
♞d8(♞)+, ♔f8
♞h8(♖)

3051



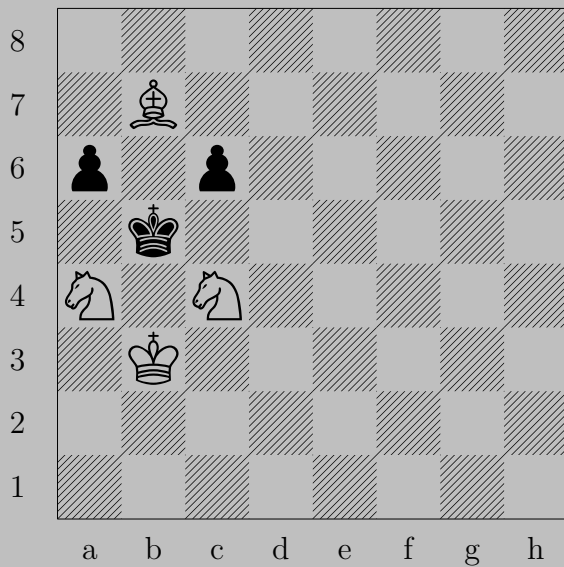
E. Szentgyörgyi, 1926

3051



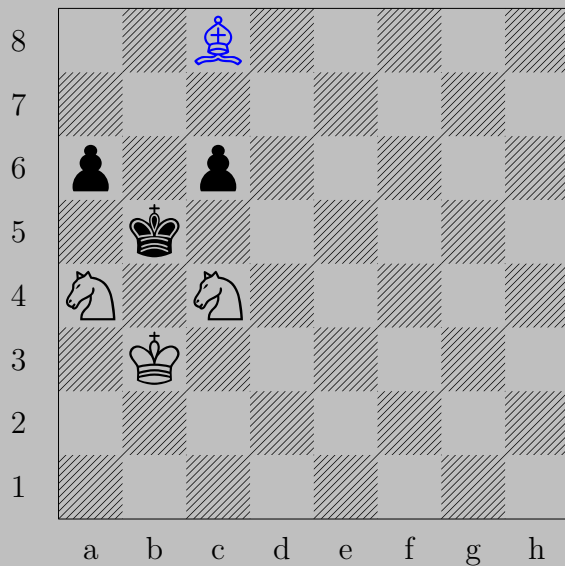
$\triangleleft e8(\triangleleft)+, \triangleleft \times d8$
 $\triangleleft b6$

3052



E. Szentgyörgyi, 1926

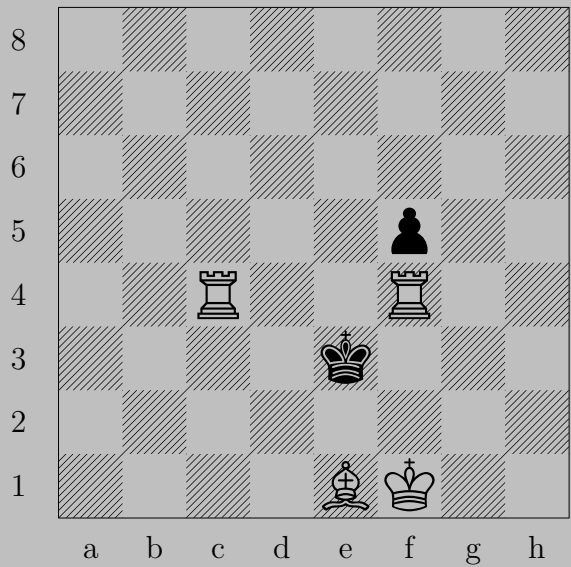
3052



♙c8

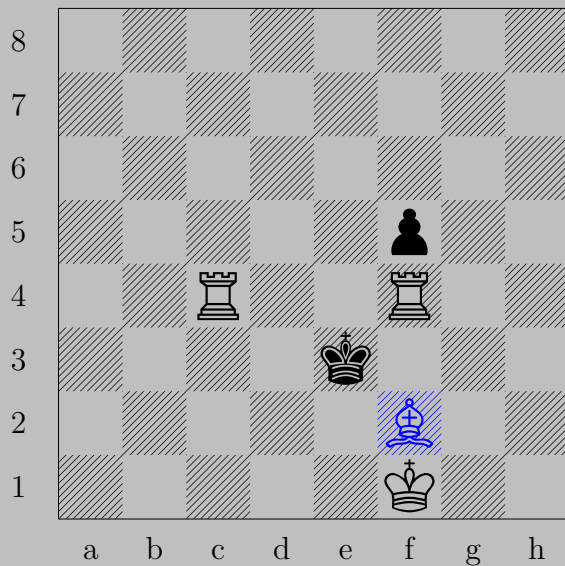
If ♖a5, ♘d6. If ♖c5, ♙d7.

3053



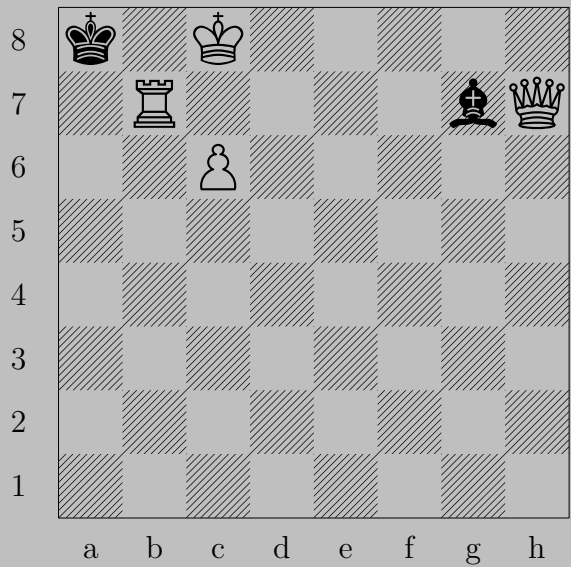
E. Szentgyörgyi, 1925

3053



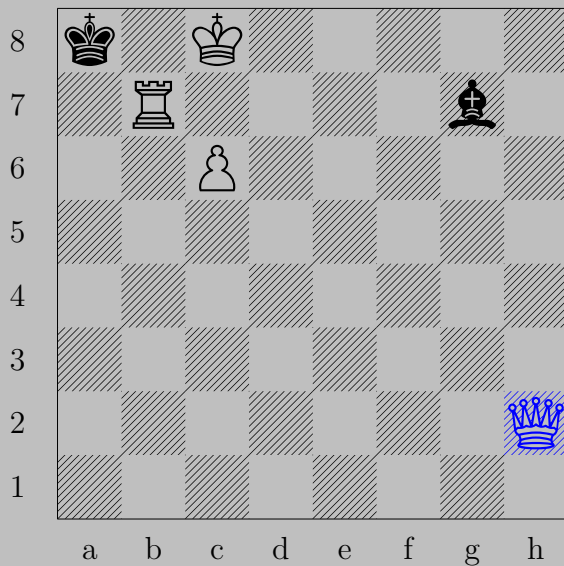
♙f3+, ♔d2 or ♔d3
♖d4

3054



E. Szentgyörgyi, 1925

3054

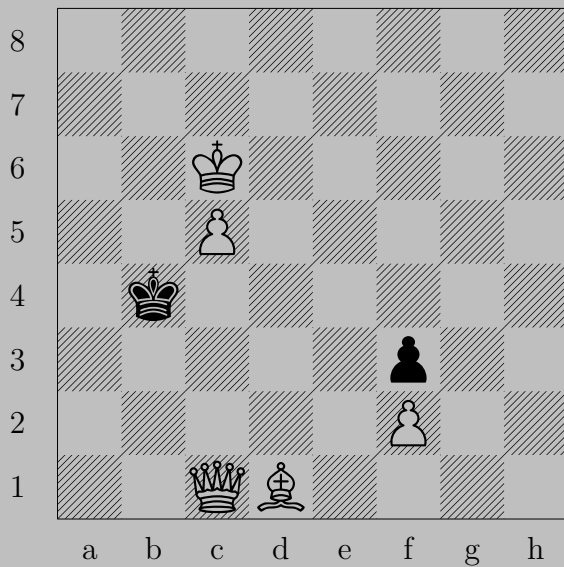


♔h2

If ♖e5, ♔a2.

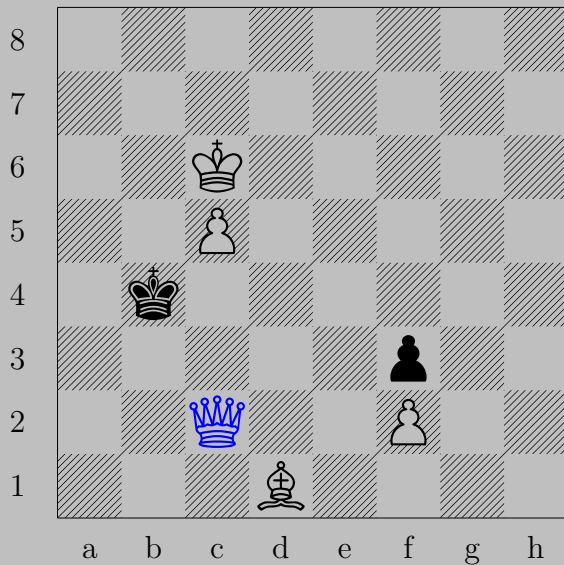
Otherwise, ♔b8.

3055



E. Szentgyörgyi, 1925

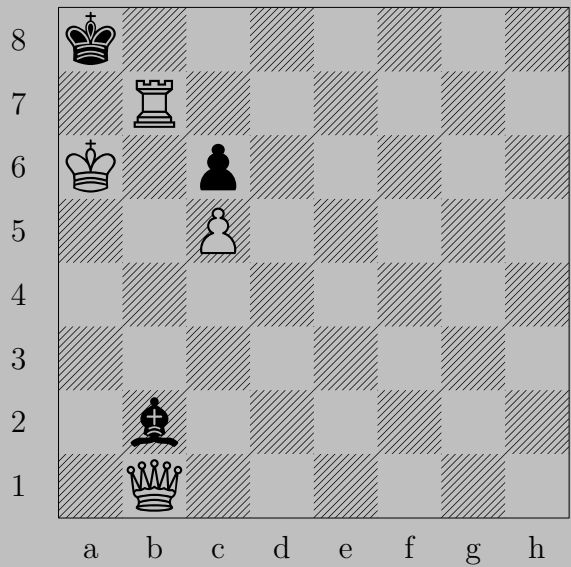
3055



♙c2

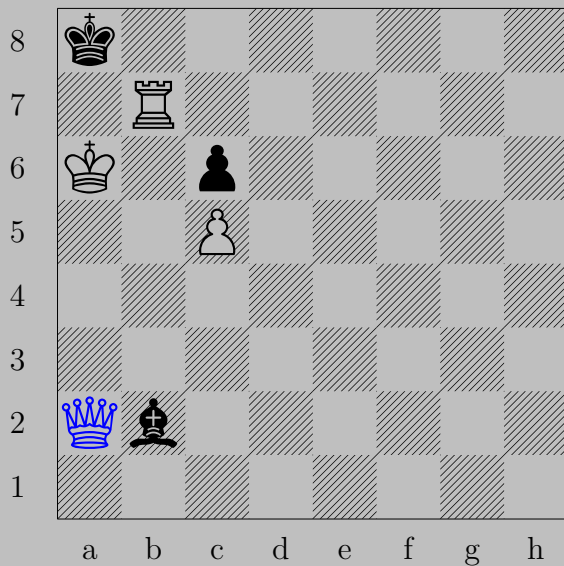
If ♔a3, ♚b3. If ♔a5, ♚a4.

3056



E. Szentgyörgyi, 1925

3056

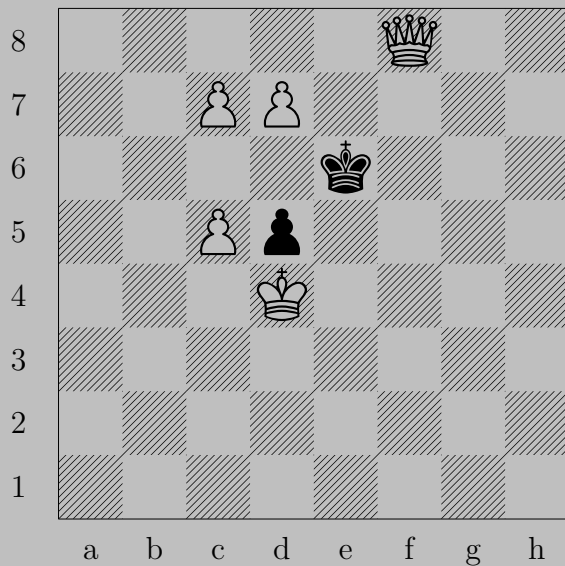


♚a2

If ♜e5-g7, ♔b6.

Otherwise, ♔g8.

3057



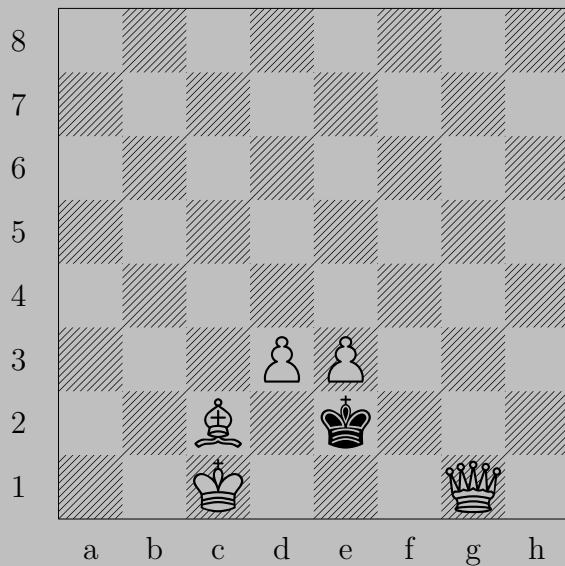
E. Szentgyörgyi, 1925

3057



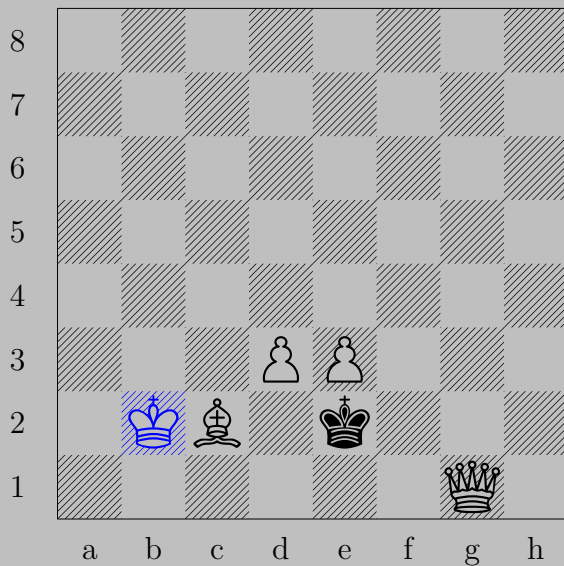
$\text{♖c8}(\text{♖}), \text{♔xd7}$
 ♔e8

3058



E. Szentgyörgyi, 1925

3058



♔b2

If ♔d2, ♚f2. If ♔f3, ♘d1.

3059



E. Szentgyörgyi, 1925

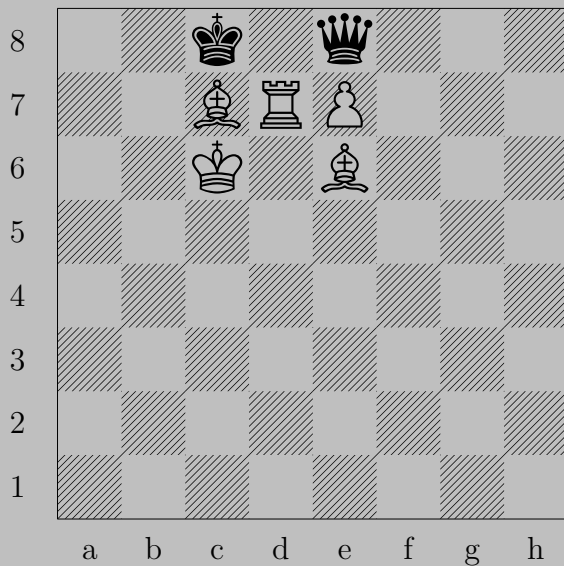
3059



♙f7, anything

♔f8(♚)

3060



E. Szentgyörgyi, 1925

3060

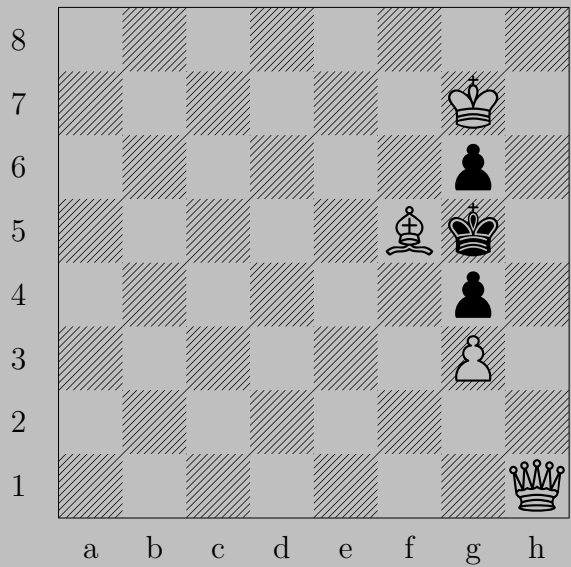


♔b6

If ♚×d7, ♖f8(♚). If ♚×e7, ♜×e7.

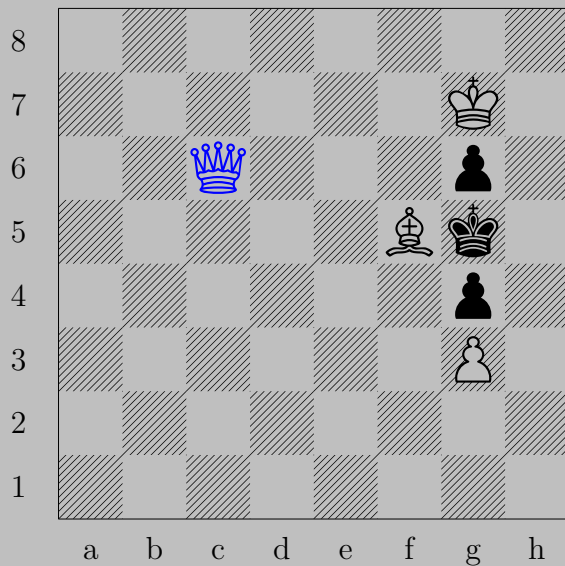
If ♚e8, ♜×e8. Otherwise, ♜e8.

3061



E. Szentgyörgyi, 1925

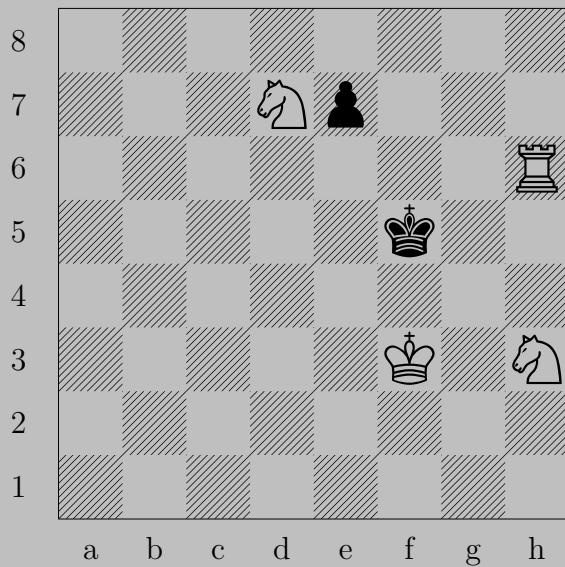
3061



♔c6

If ♔xf5, ♔d5. If ♙xf5, ♔g6. If ♔h5, ♔xg6.

3062



E. Szentgyörgyi, 1925

3062



♞f4 , ♙e6 or ♙e5 or ♔g5

♖h5

3063



E. Szentgyörgyi, 1929

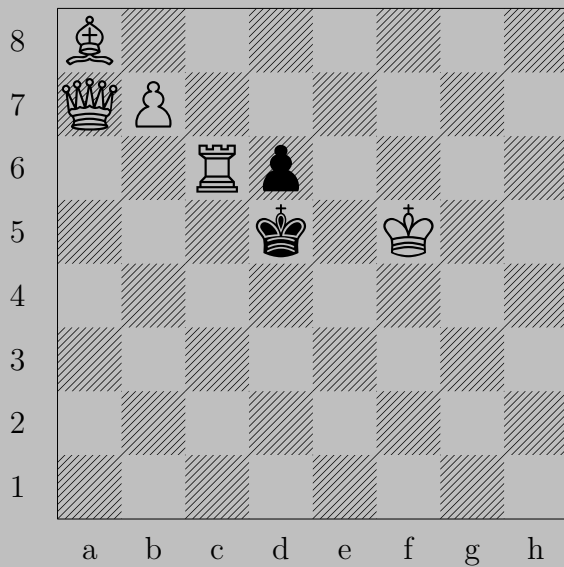
3063



$\text{N}a5$

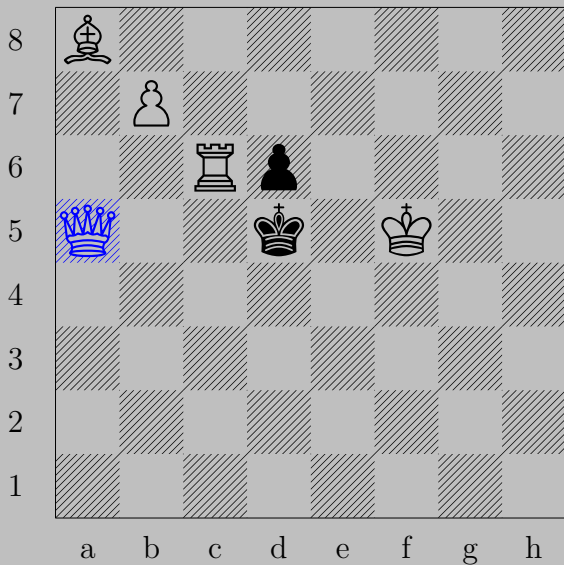
If $\text{N}e5$, $\text{K}xe5$. Otherwise, $\text{K}e5$.

3064



E. Szentgyörgyi, 1929

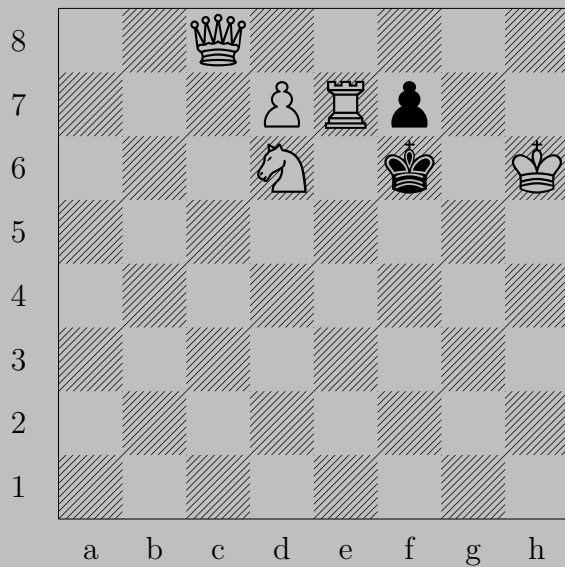
3064



♔a5+

If ♙xc6, ♖b8(♘). If ♙d4, ♔d2.

3065



E. Szentgyörgyi, 1929

3065



♔h5

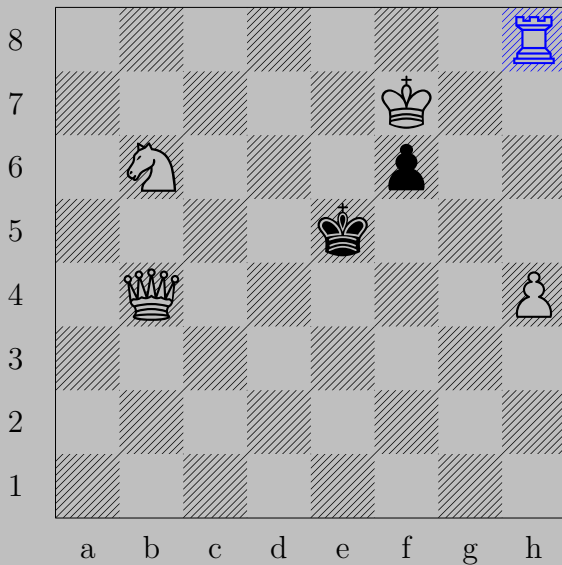
If ♔×e7, ♕d8(♔). If ♔g7, ♖×f7.

3066



E. Szentgyörgyi, 1929

3066



Rh8

If Qf5, Rh5. If Bf5, Re8.

3067



E. Szentgyörgyi, 1929

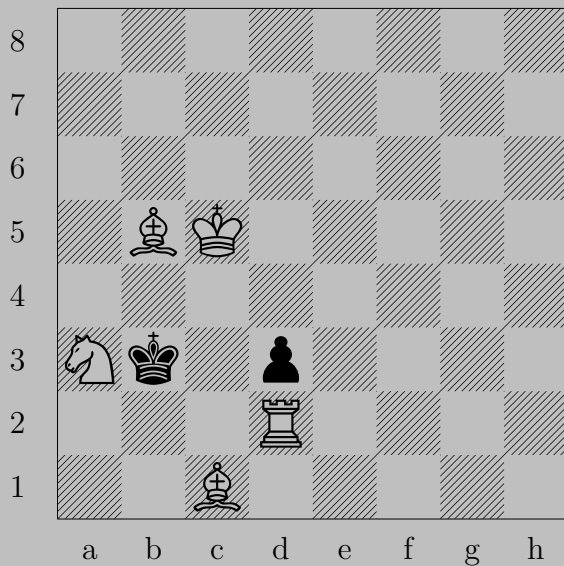
3067



Rf6 , Kxd5 or Bc6 pr Bc5

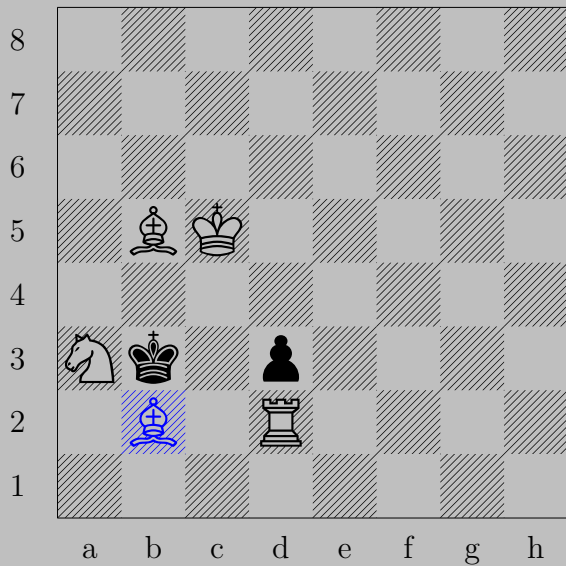
Bf3

3068



E. Szentgyörgyi, 1929

3068



♖b2, ♔a2

♗c4

3069



E. Szentgyörgyi, 1931

3069



Rf5

If Kxc4 , Rxb4 . If Ke4 or Kb2 , Rf4 .

3070



E. Szentgyörgyi, 1931

3070



♞c2, ♖f3

♞e3

3071



E. Szentgyörgyi, 1931

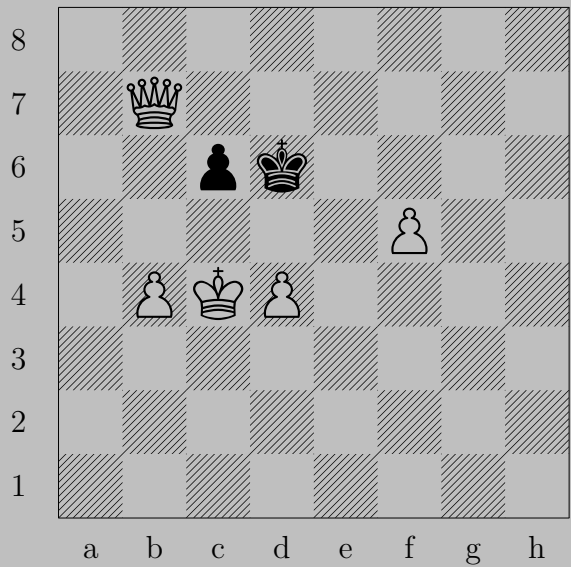
3071



♗a6 , $\text{♙}\times\text{e6}$ or ♙d6 or ♙d5

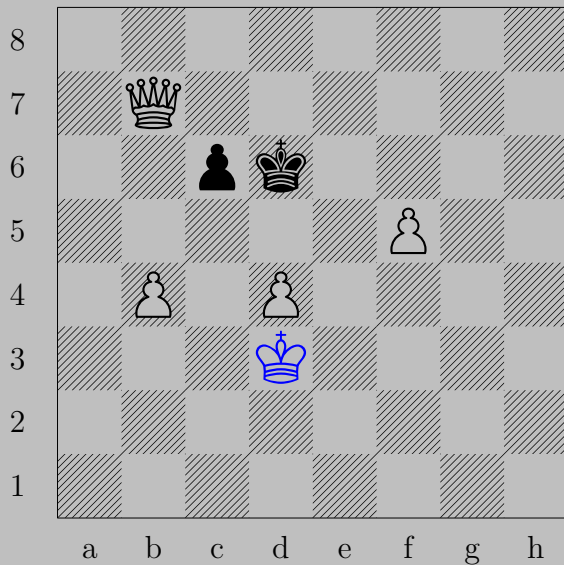
♗d3

3072



E. Szentgyörgyi, 1931

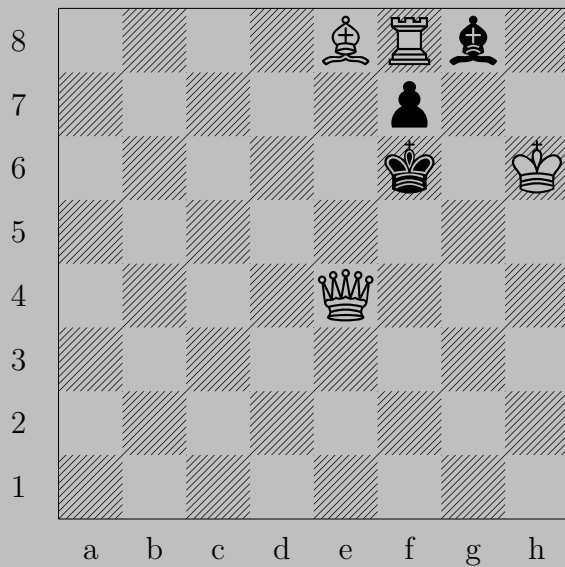
3072



♔d3

If ♕d5, ♙d7. If ♖c5, ♖(b4)×c5.

3073



E. Szentgyörgyi, 1931

3073



♗d7, ♖h7

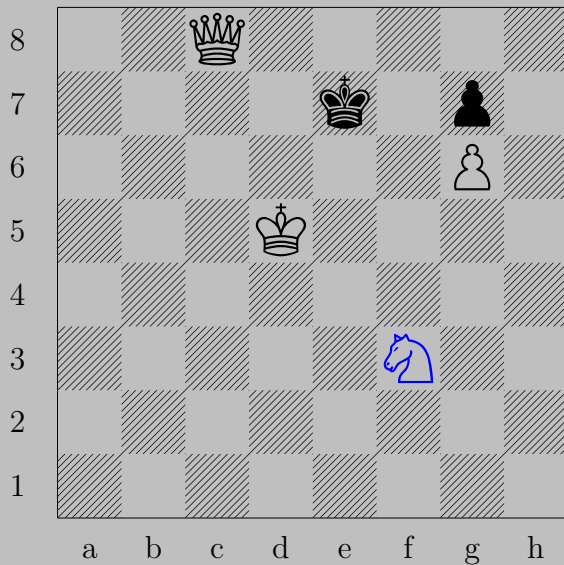
♚e6

3074



E. Szentgyörgyi, 1931

3074



♞f3, ♔f6
♚e6

3075



E. Szentgyörgyi, 1931

3075



♙e7

If ♔f4, ♖xf2.

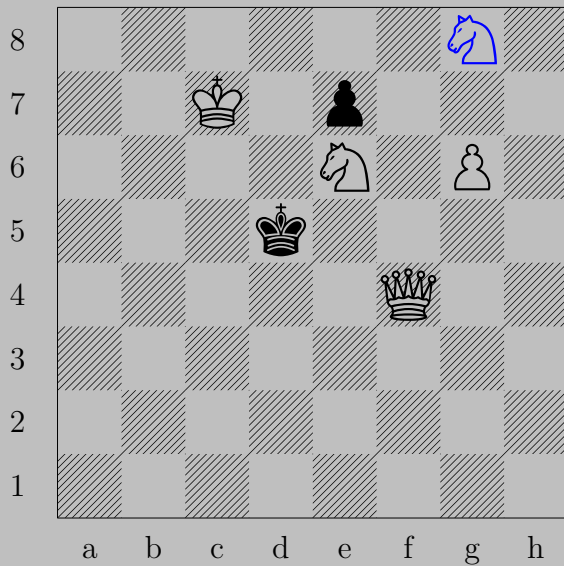
If ♞e3, ♙xe3. Otherwise, ♙e3.

3076



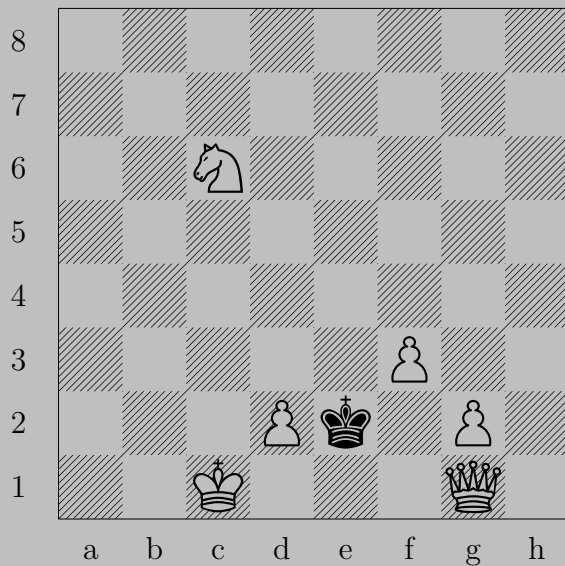
E. Szentgyörgyi, 1931

3076



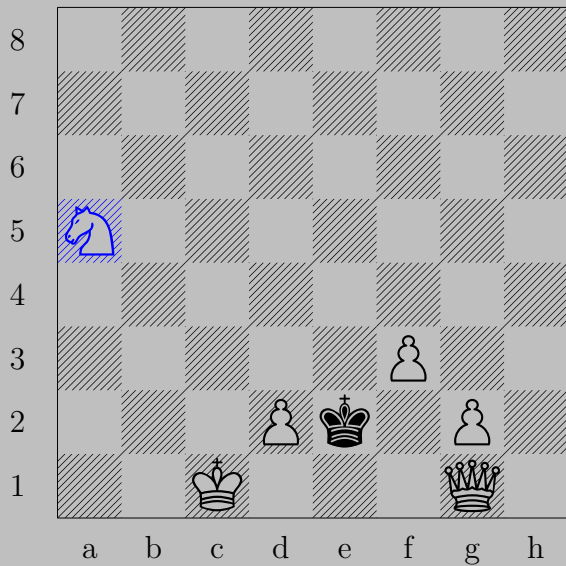
\triangleleft g8(♞), \triangleleft x e6
 \triangleleft e4

3077



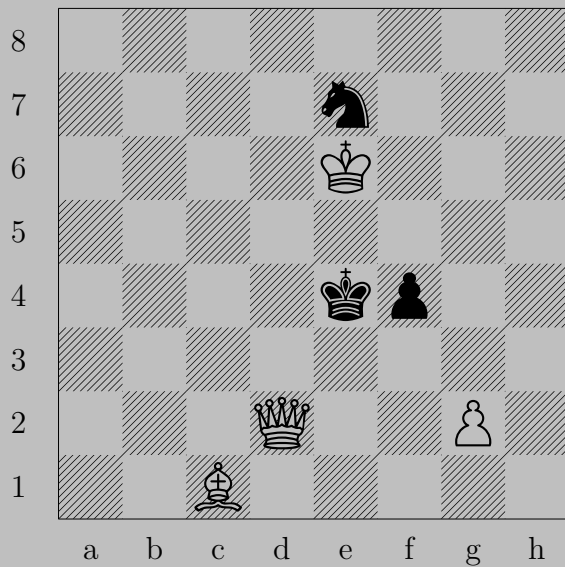
E. Szentgyörgyi, 1931

3077



a5, d3
e3

3078



E. Szentgyörgyi, 1931

3078

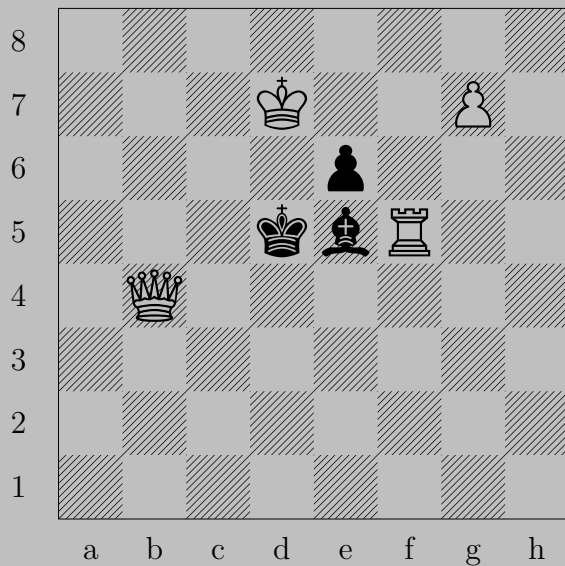


♔d1

If ♖f3, ♗×f3.

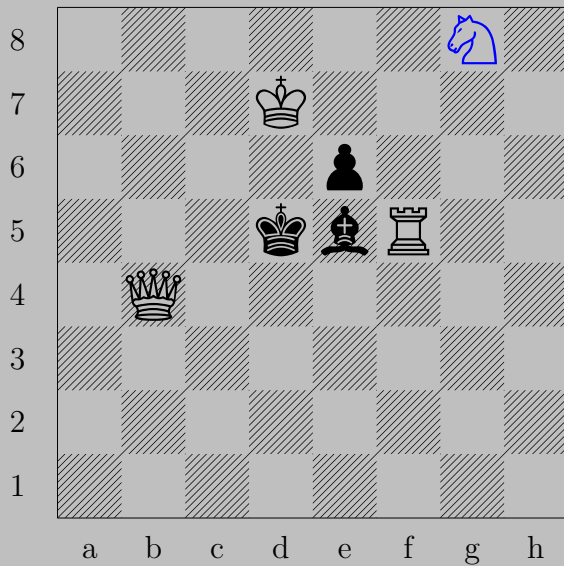
If ♞d5, ♔×d5. Otherwise, ♔d5.

3079



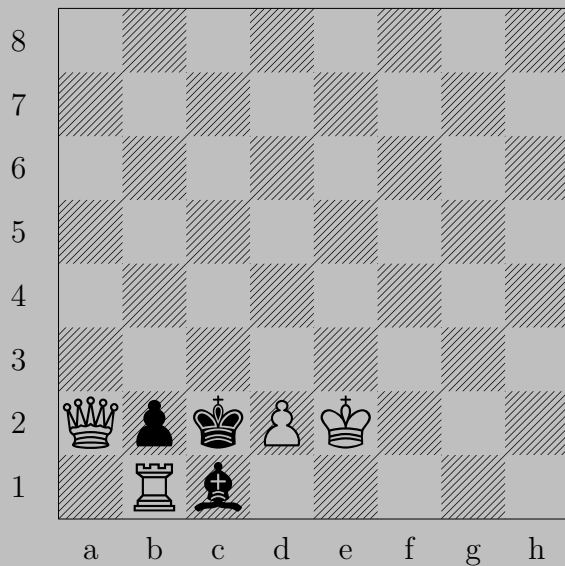
E. Szentgyörgyi, 1931

3079



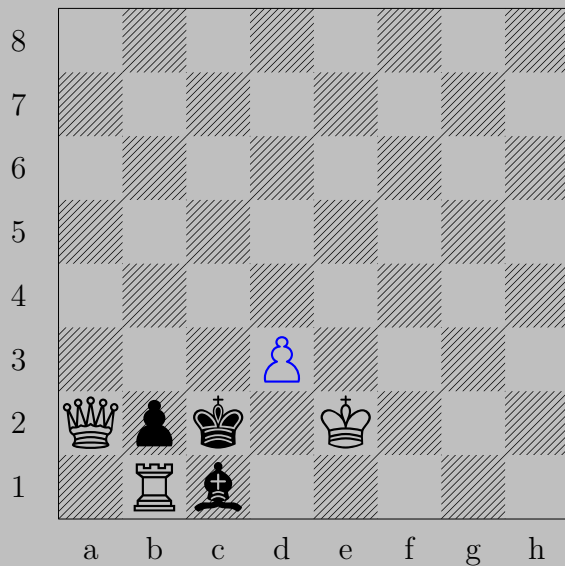
$\text{♔g8}(\text{♞}), \text{♔}\times\text{f5}$
 ♞e7

3080



E. Szentgyörgyi, 1931

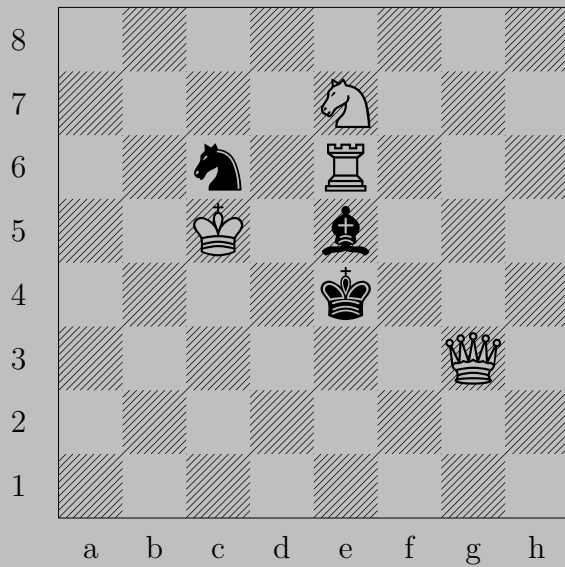
3080



♙d4

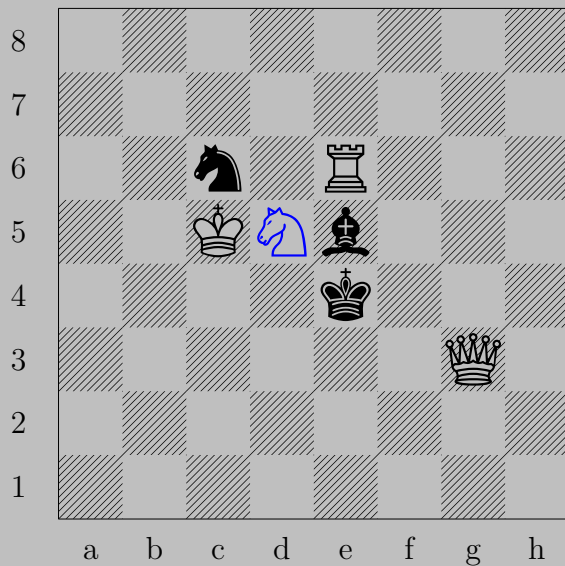
If ♔c3, ♚d4. If ♜d2-h6, ♚xb2.

3081



E. Szentgyörgyi, 1932

3081



♞d5

If ♚f5, ♚g6.

Otherwise, ♖xe5.

3082



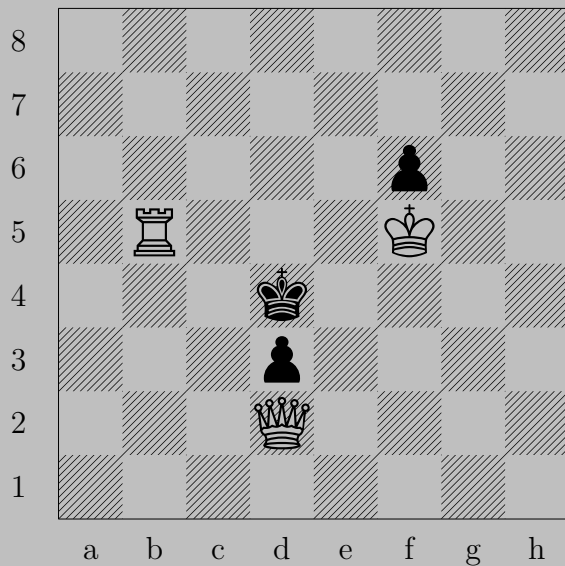
E. Szentgyörgyi, 1932

3082



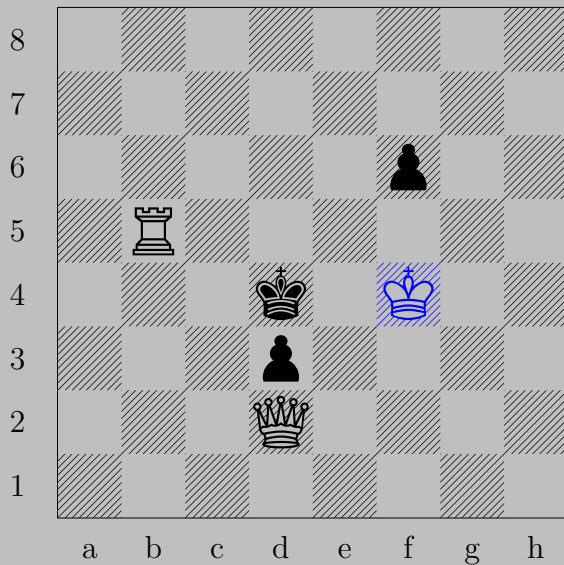
♔d7, ♘f6 or ♘h6
♔d8(♘)

3083



E. Szentgyörgyi, 1932

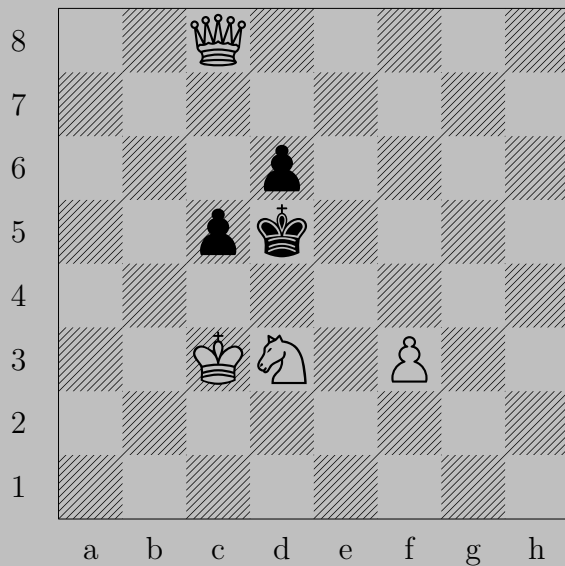
3083



♔f4, ♖f5 or ♔c4

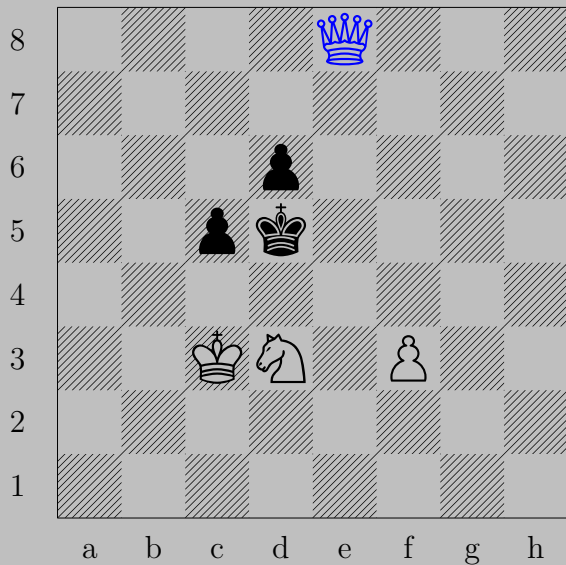
♔b4

3084



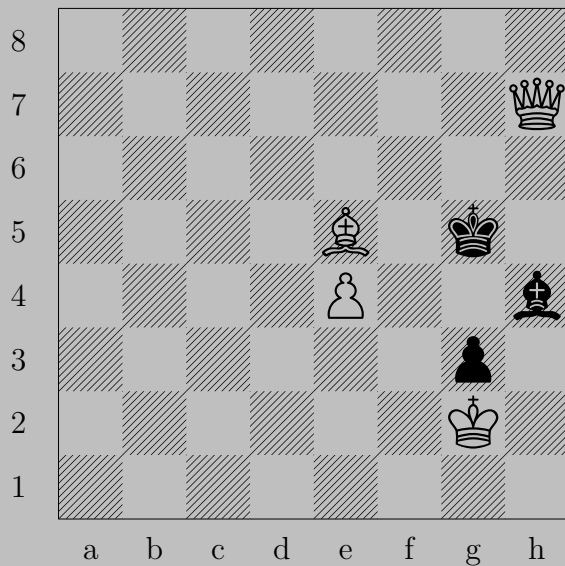
E. Szentgyörgyi, 1932

3084



♔e8, ♟c4
♟e4

3085



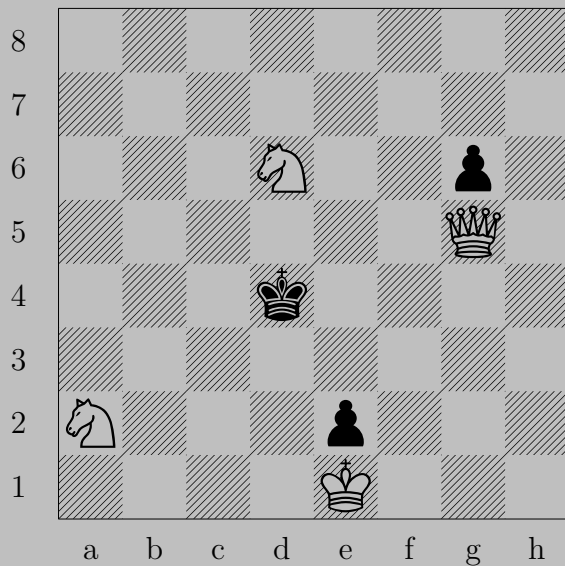
E. Szentgyörgyi, 1932

3085



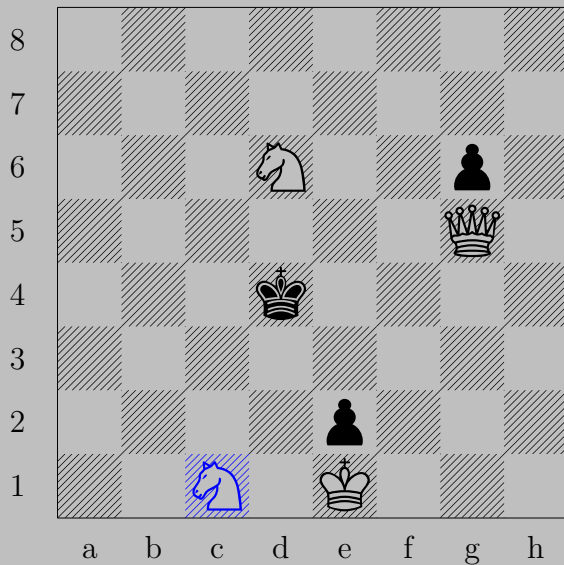
♖d4, ♔f4 or ♔g4
♔f5



3086



E. Szentgyörgyi, 1932

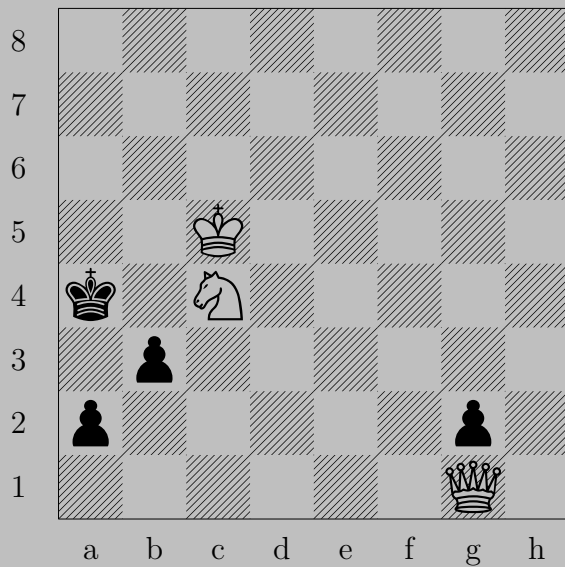
3086



c1, c3

d2

3087



E. Szentgyörgyi, 1932

3087



$\text{♔} \times g2$

If $\text{♕} a1(\text{♔})$, $\text{♔} a8$. If $\text{♕} b2$, $\text{♔} c2$.



3088



♔f3

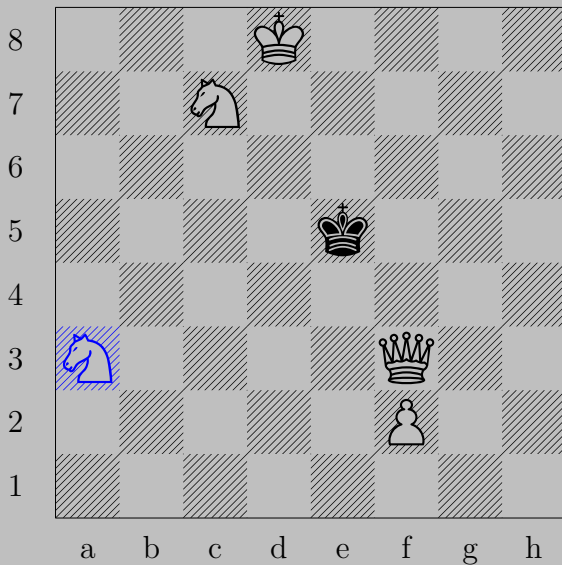
If ♔d4, ♞e5. If ♔d4, ♚c3.

3089



E. Szentgyörgyi, 1932

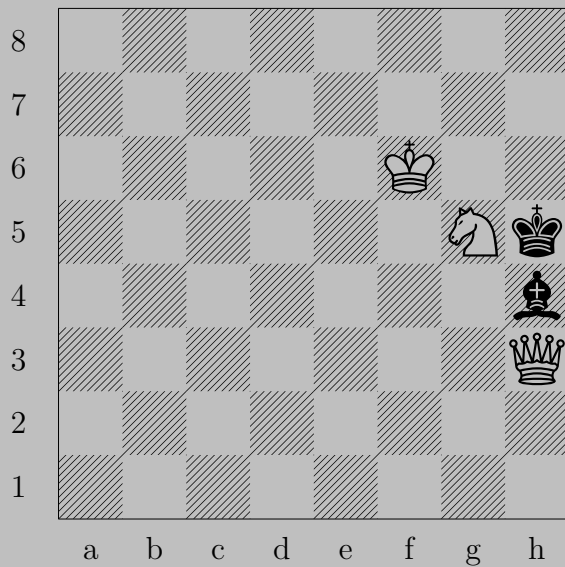
3089



♞a3

If ♔d4 , ♚e3 . If ♔d6 , ♚d5 .

3090



E. Szentgyörgyi, 1932

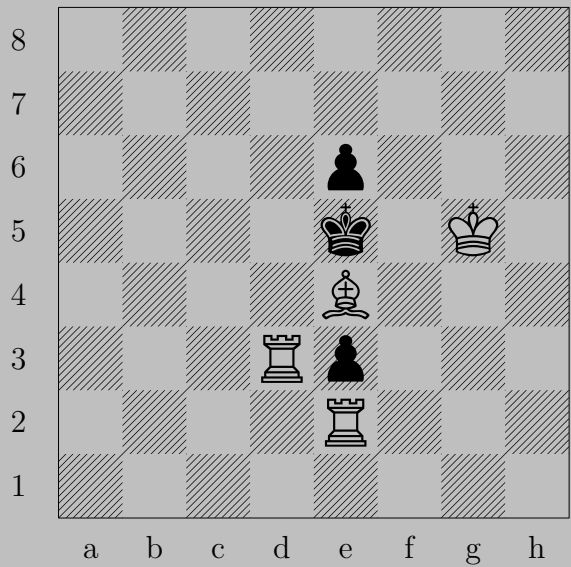
3090



♔h1

If ♙g4, ♚f3. If ♔h6, ♚xh4.

3091



E. Szentgyörgyi, 1932

3091



♔f5, ♖×f5
♖(e2)×e3

3092



E. Szentgyörgyi, 1932

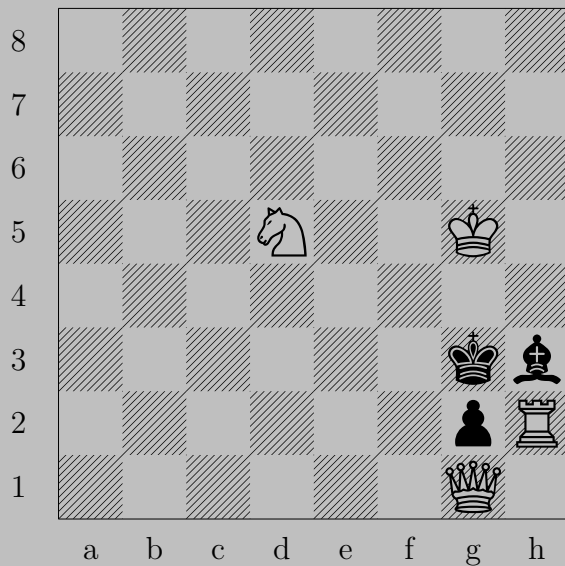
3092



♖h4

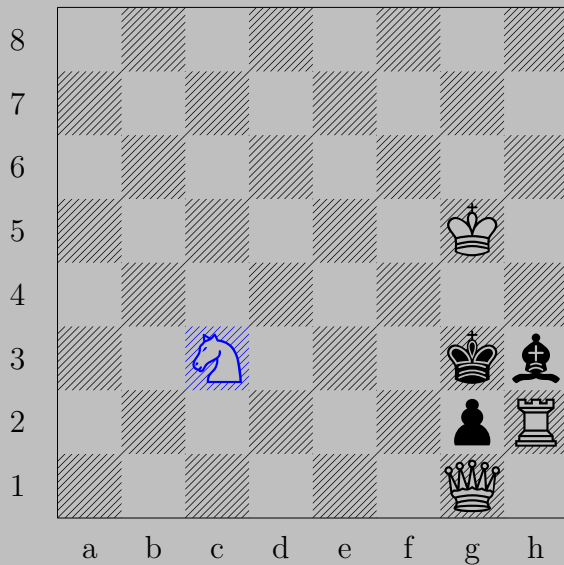
If ♔g4, ♚g5. If ♔e4, ♔g3.

3093



E. Szentgyörgyi, 1932

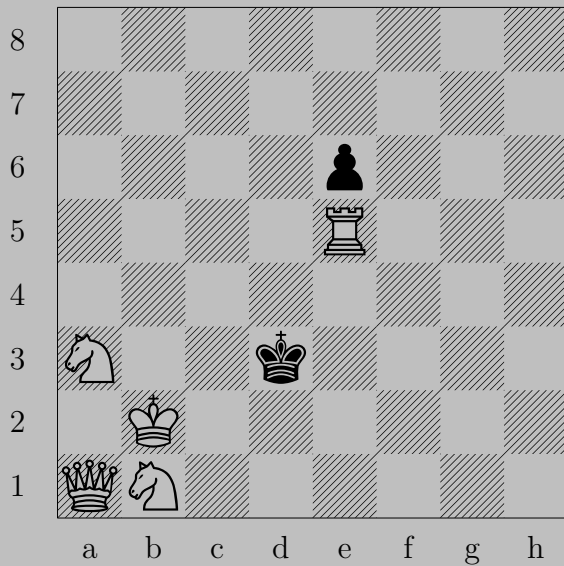
3093



Nc3

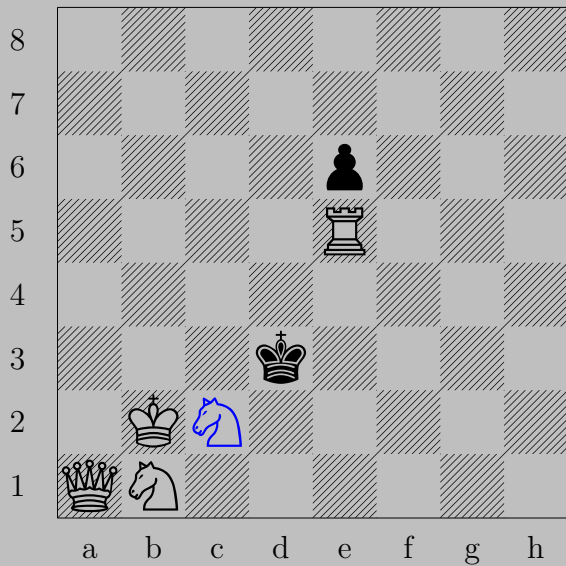
If Kg3 , Rxh3 . If Kg4-c8 , Qxg2 .




3094



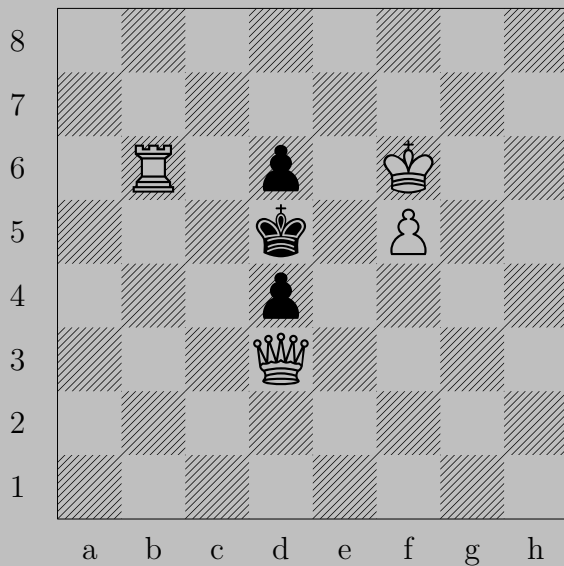
E. Szentgyörgyi, 1932

3094



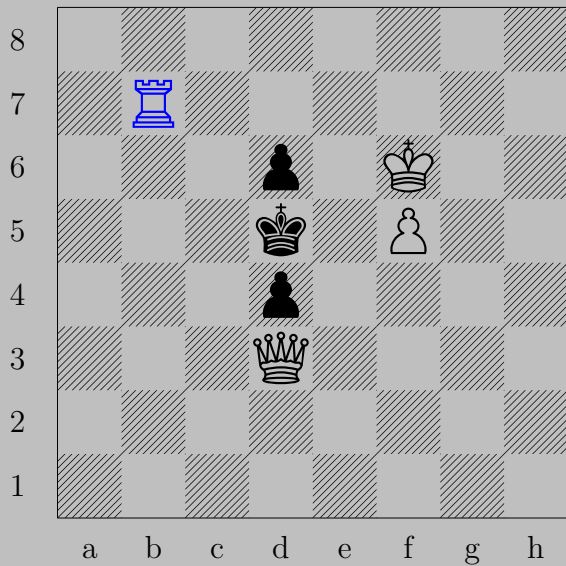
c2, c4
a6

3095



E. Szentgyörgyi, 1932

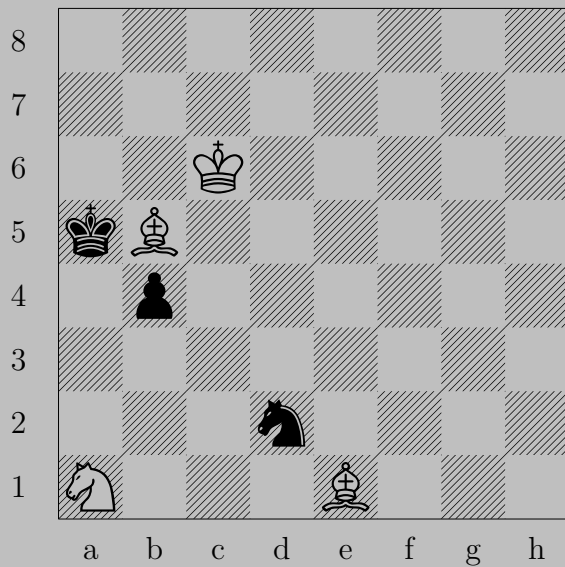
3095



♖b7, ♔c5 or ♔c6

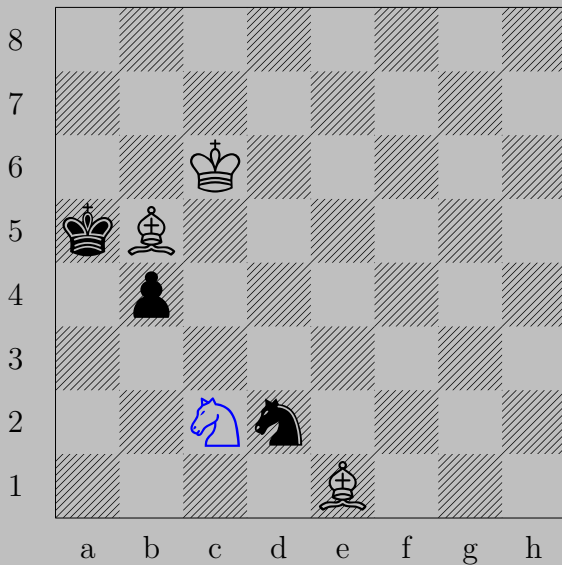
♕b5

3096



E. Szentgyörgyi, 1932

3096



Nc2

If Bb3 , Bxd2 .

Otherwise, Bxb4 .

3097



E. Szentgyörgyi, 1932

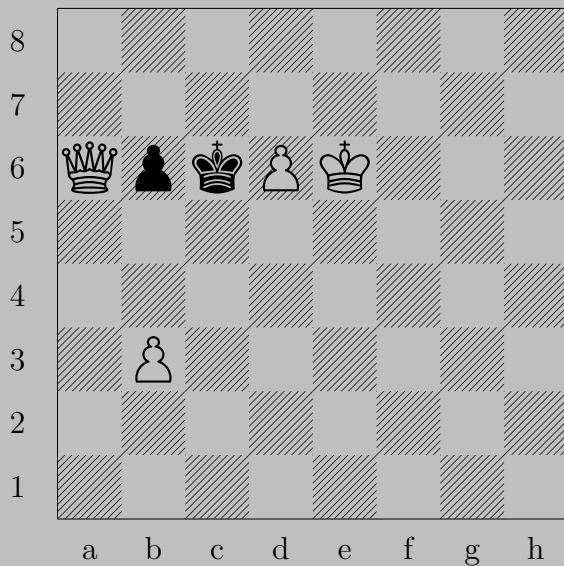
3097



♚g4

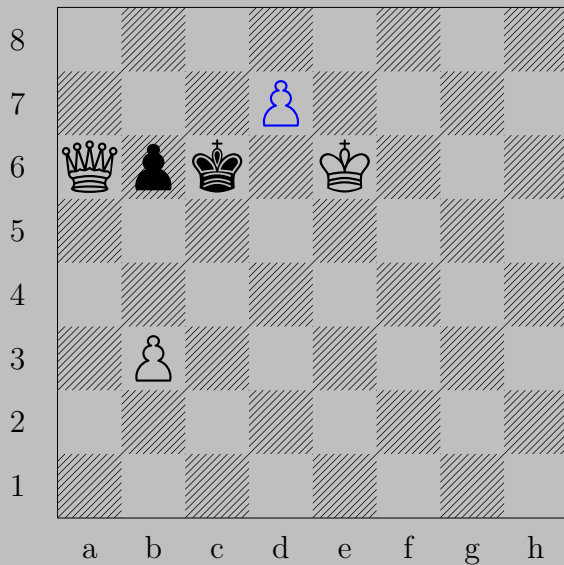
If ♜e6, ♞d7. If ♚f6, ♙f5.

3098



E. Szentgyörgyi, 1932

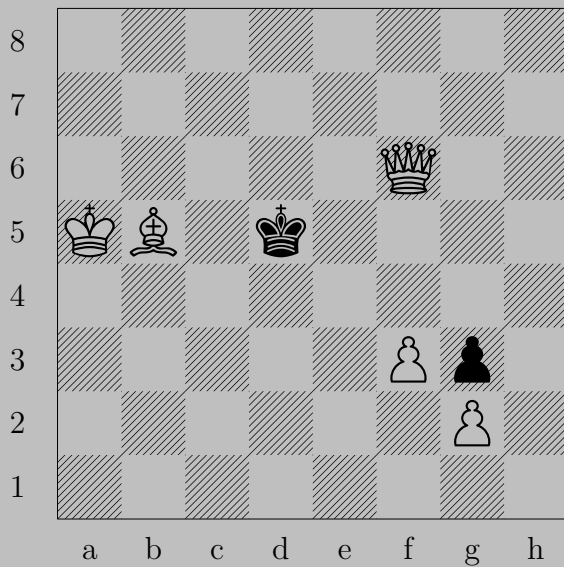
3098



♟d7

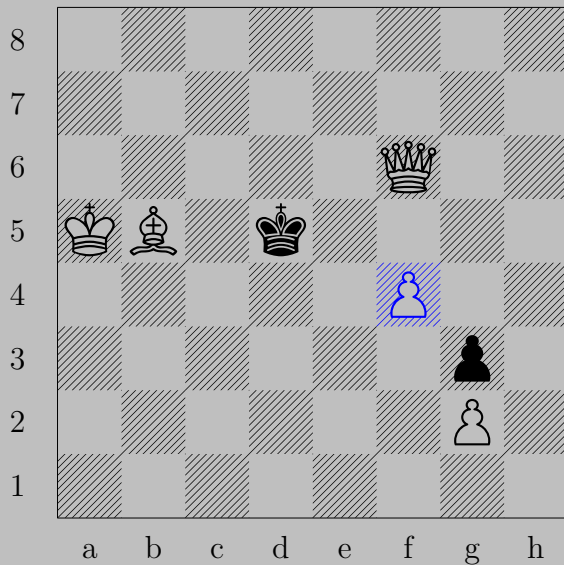
If ♞c5 , ♜c4 . If ♞c7 , ♜c8 .

3099



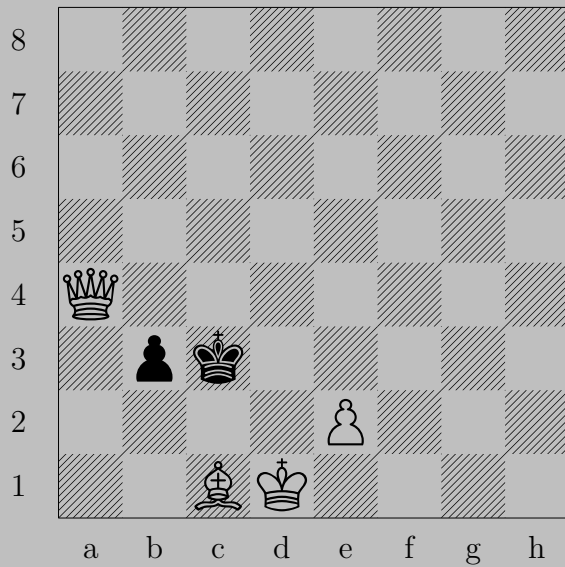
E. Szentgyörgyi, 1933

3099

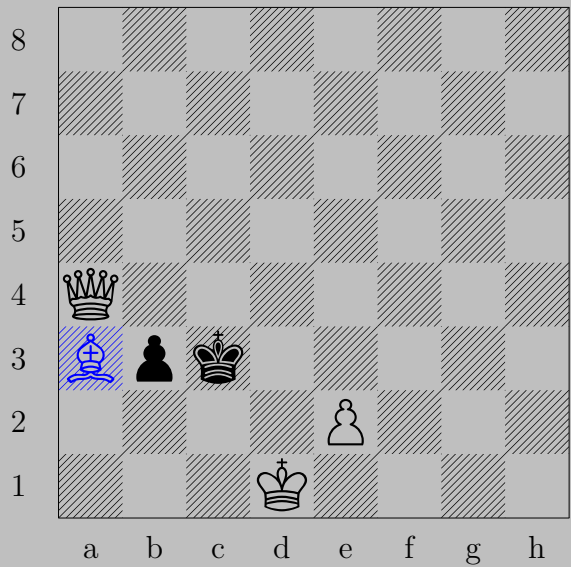


♖f4, ♖c5 or ♖e4

♑e5



3100



♔a3, ♖b2
♔b4