

# Chess Puzzles

2901-3000

Mate in Two

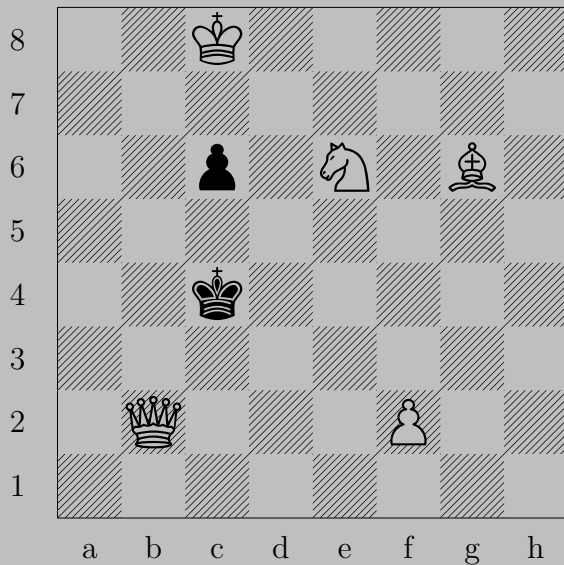
White to Move

László Polgár

## Links

<a href="#">2901</a>	<a href="#">2902</a>	<a href="#">2903</a>	<a href="#">2904</a>	<a href="#">2905</a>	<a href="#">2906</a>	<a href="#">2907</a>	<a href="#">2908</a>	<a href="#">2909</a>	<a href="#">2910</a>
<a href="#">2911</a>	<a href="#">2912</a>	<a href="#">2913</a>	<a href="#">2914</a>	<a href="#">2915</a>	<a href="#">2916</a>	<a href="#">2917</a>	<a href="#">2918</a>	<a href="#">2919</a>	<a href="#">2920</a>
<a href="#">2921</a>	<a href="#">2922</a>	<a href="#">2923</a>	<a href="#">2924</a>	<a href="#">2925</a>	<a href="#">2926</a>	<a href="#">2927</a>	<a href="#">2928</a>	<a href="#">2929</a>	<a href="#">2930</a>
<a href="#">2931</a>	<a href="#">2932</a>	<a href="#">2933</a>	<a href="#">2934</a>	<a href="#">2935</a>	<a href="#">2936</a>	<a href="#">2937</a>	<a href="#">2938</a>	<a href="#">2939</a>	<a href="#">2940</a>
<a href="#">2941</a>	<a href="#">2942</a>	<a href="#">2943</a>	<a href="#">2944</a>	<a href="#">2945</a>	<a href="#">2946</a>	<a href="#">2947</a>	<a href="#">2948</a>	<a href="#">2949</a>	<a href="#">2950</a>
<a href="#">2951</a>	<a href="#">2952</a>	<a href="#">2953</a>	<a href="#">2954</a>	<a href="#">2955</a>	<a href="#">2956</a>	<a href="#">2957</a>	<a href="#">2958</a>	<a href="#">2959</a>	<a href="#">2960</a>
<a href="#">2961</a>	<a href="#">2962</a>	<a href="#">2963</a>	<a href="#">2964</a>	<a href="#">2965</a>	<a href="#">2966</a>	<a href="#">2967</a>	<a href="#">2968</a>	<a href="#">2969</a>	<a href="#">2970</a>
<a href="#">2971</a>	<a href="#">2972</a>	<a href="#">2973</a>	<a href="#">2974</a>	<a href="#">2975</a>	<a href="#">2976</a>	<a href="#">2977</a>	<a href="#">2978</a>	<a href="#">2979</a>	<a href="#">2980</a>
<a href="#">2981</a>	<a href="#">2982</a>	<a href="#">2983</a>	<a href="#">2984</a>	<a href="#">2985</a>	<a href="#">2986</a>	<a href="#">2987</a>	<a href="#">2988</a>	<a href="#">2989</a>	<a href="#">2990</a>
<a href="#">2991</a>	<a href="#">2992</a>	<a href="#">2993</a>	<a href="#">2994</a>	<a href="#">2995</a>	<a href="#">2996</a>	<a href="#">2997</a>	<a href="#">2998</a>	<a href="#">2999</a>	<a href="#">3000</a>

2901



W. Speckmann, 1961

2901



$\text{♙f7}$

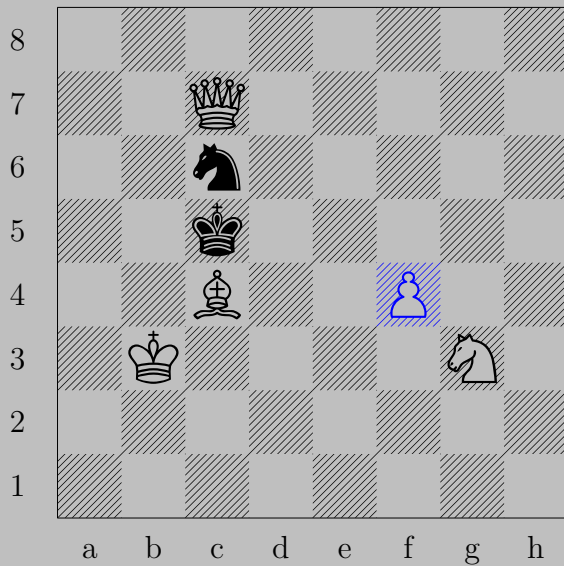
If  $\text{♜c5}$ ,  $\text{♞f4}$ . If  $\text{♞d5}$ ,  $\text{♚d4}$ . If  $\text{♞d3}$ ,  $\text{♞c5}$ .

2902



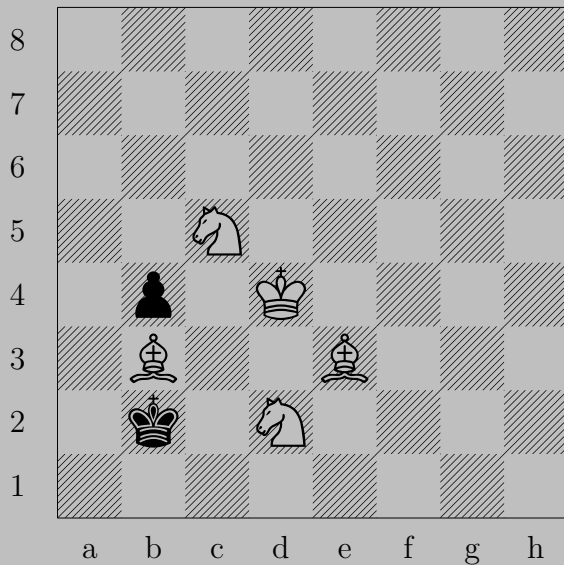
W. Speckmann, 1962

2902



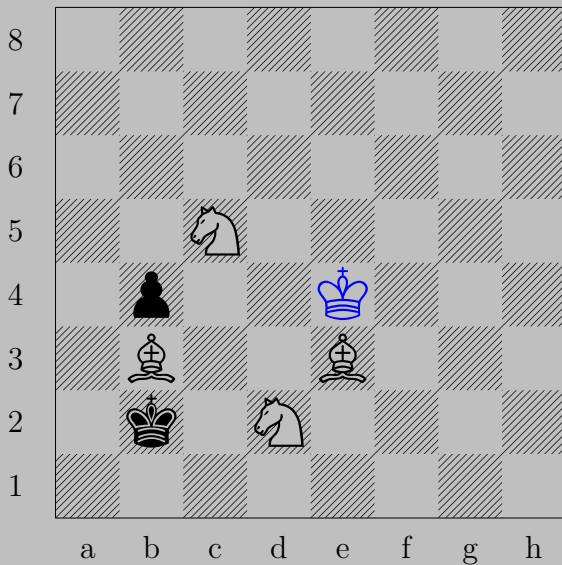
♙f4, ♚d4  
♚b6

2903



S. Stambuk, 1952

2903

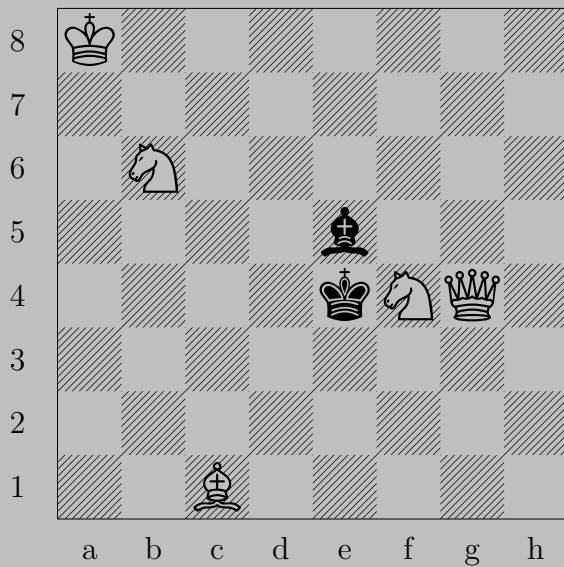


♔e4

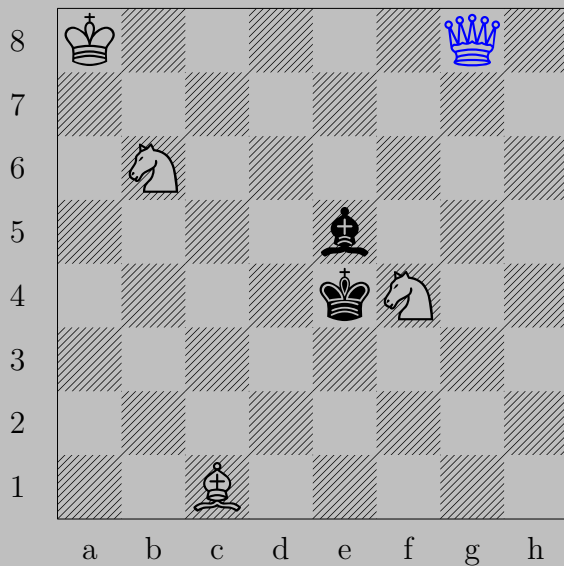
If ♔a1, ♕d4. If ♔a3, ♖c4. If ♔c3, ♗a4. If ♔c1, ♗d3.



2904



J. Stanton, 1986

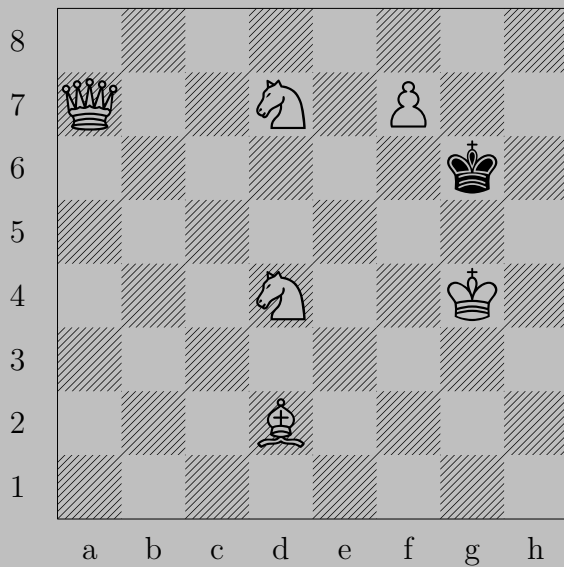


♔g8

If ♔d4, ♔c4. If ♔f5, ♔g6. If ♔f3, ♔g2.

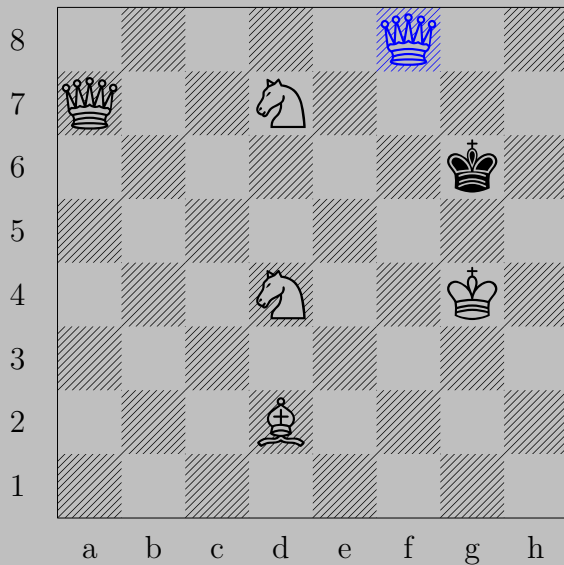
Otherwise, ♔d5.

2905



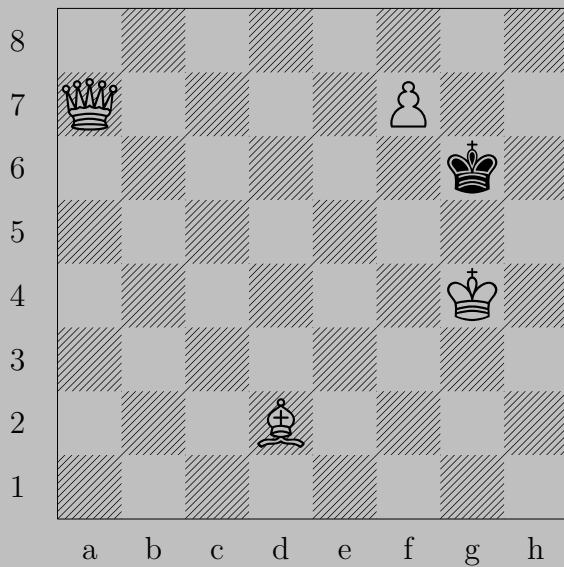
H. Staudte, 1963

2905



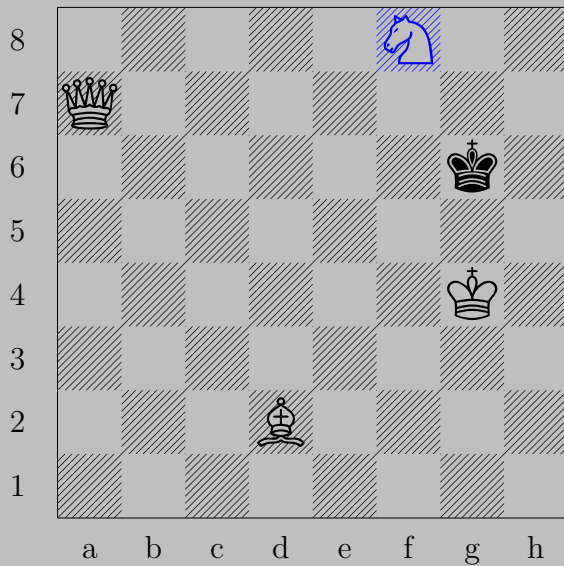
$\text{♔f8}$  ( $\text{♔}$ ),  $\text{♑h7}$   
 $\text{♞e5}$

2906



H. Staudte, 1963

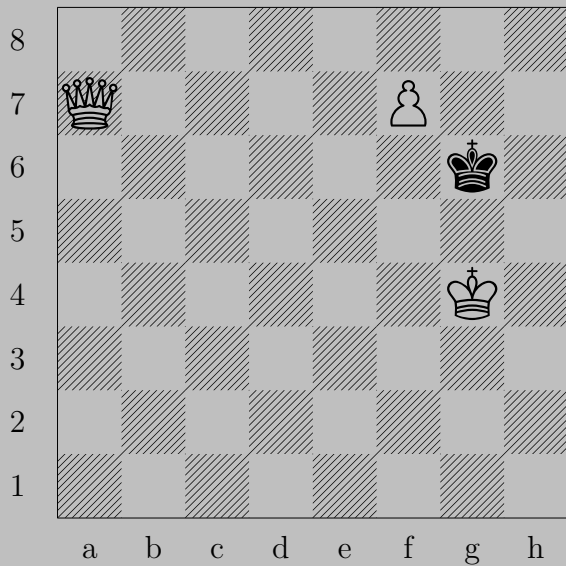
2906



$\text{♞f8}(\text{♞})+, \text{♔f6}$

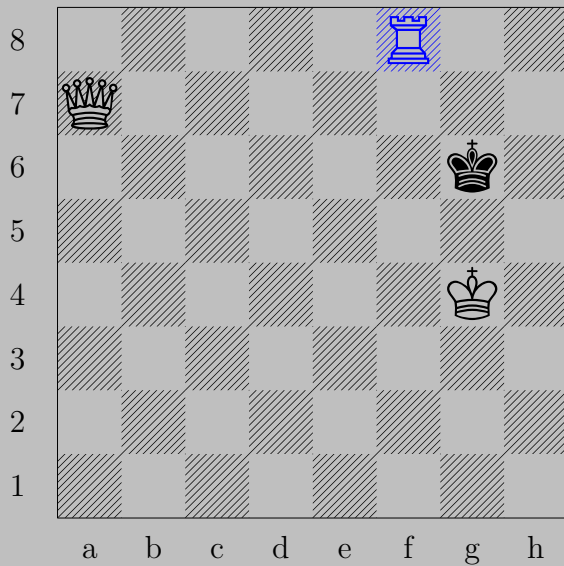
$\text{♝c3}$

2907



H. Staudte, 1963

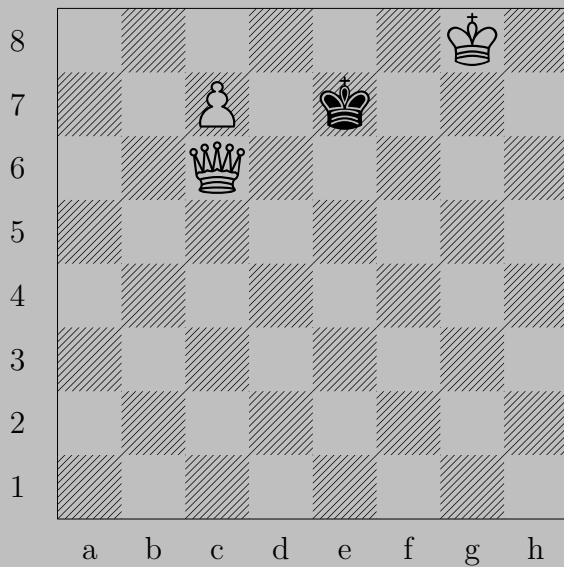
2907



$\text{♔f8}(\text{♖}), \text{♕h6}$   
 $\text{♖f6}$

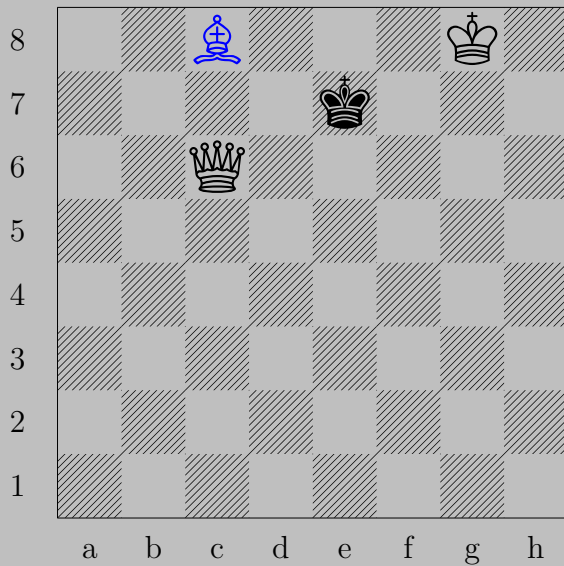


2908



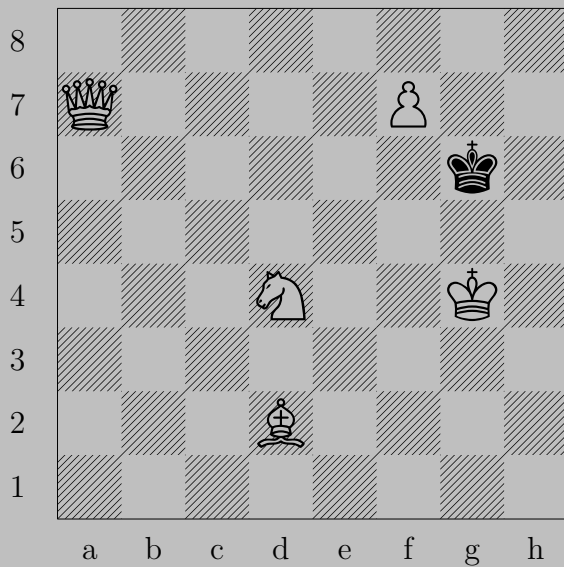
H. Staudte, 1963

2908



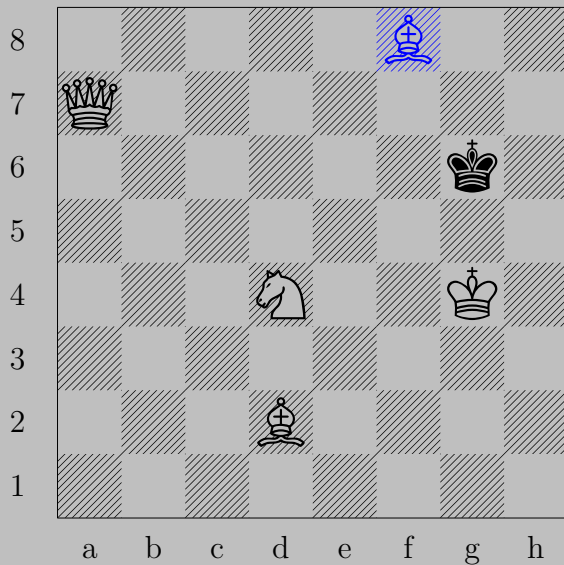
♠c8(♠), ♚d8  
♚d7

2909



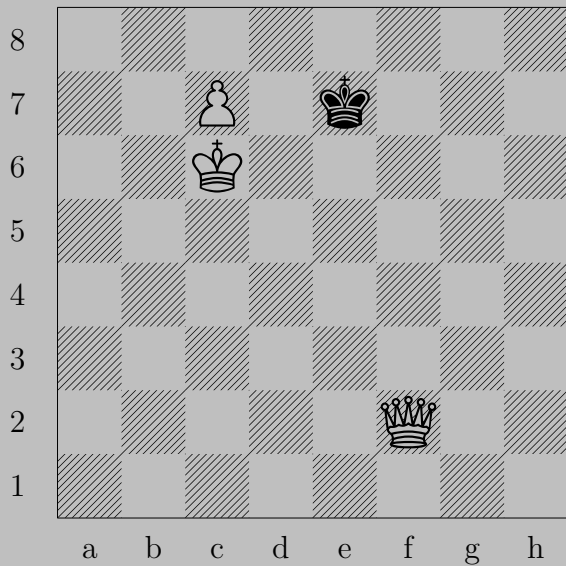
H. Staudte, 1963

2909



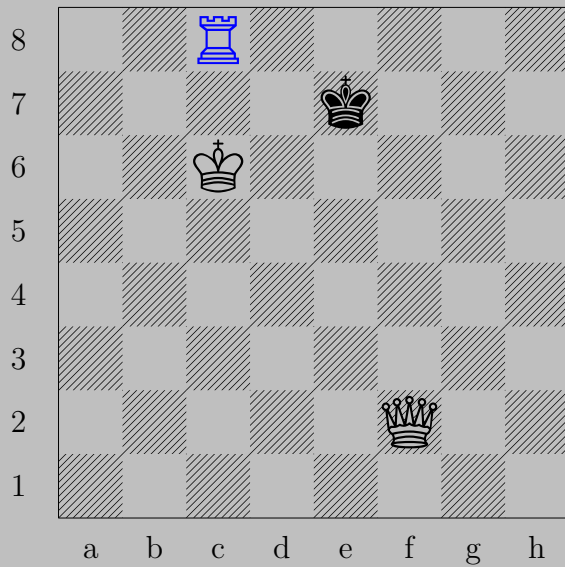
♖f8(♗), ♔f6  
♚g7

2910



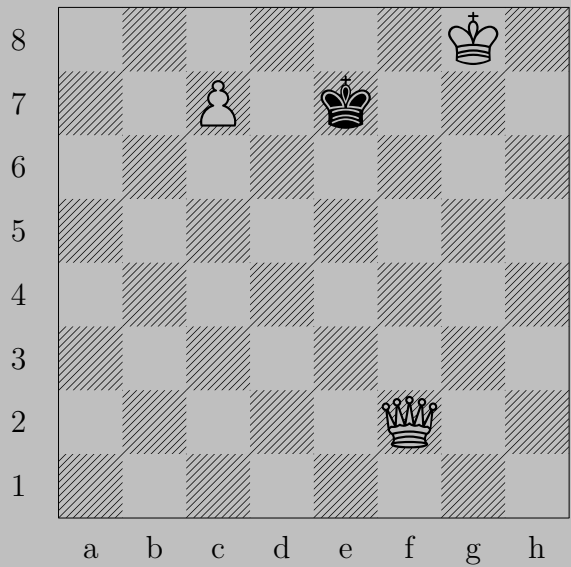
H. Staudte, 1963

2910



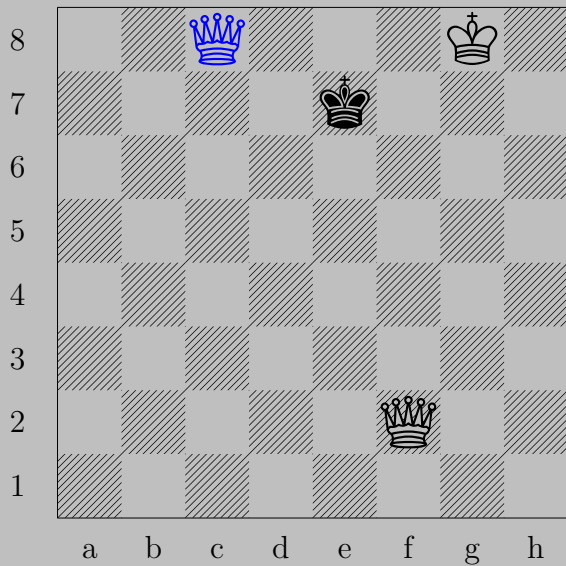
$\text{♔c8}(\text{♖}), \text{♕e6}$   
 $\text{♑e2}$

2911



H. Staudte, 1963

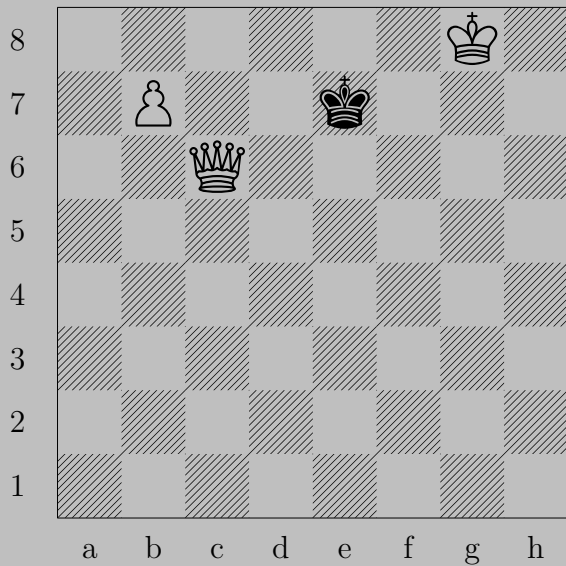
2911



♔c8(♚), ♔d6  
♚(f2)c5

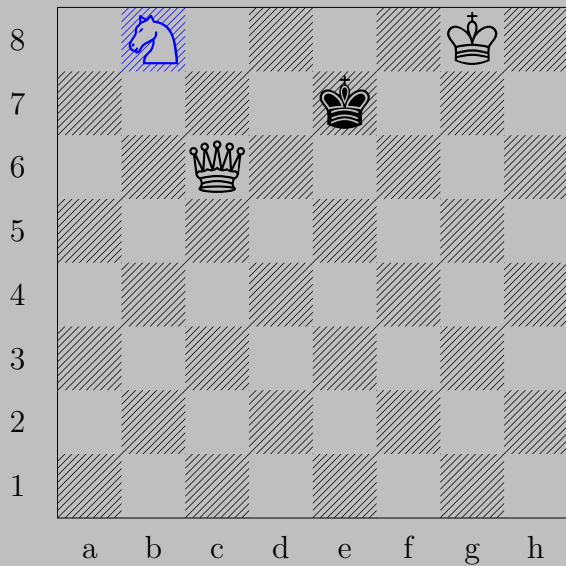


2912



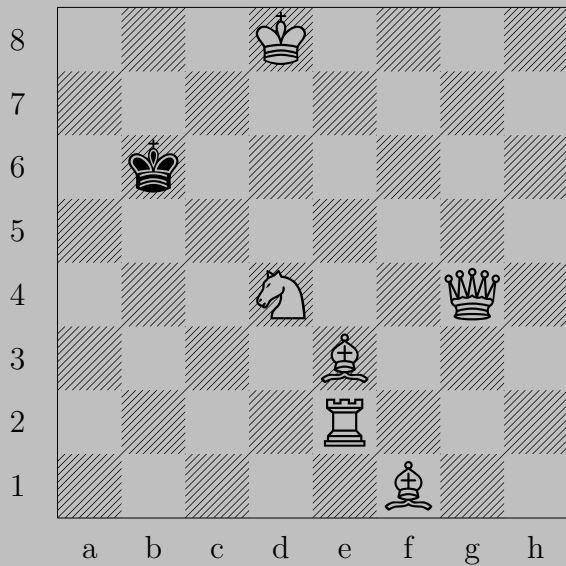
H. Staudte, 1963

2912



♞b8(♞), ♔d8  
♔d7

2913



H. Staudte, 1973

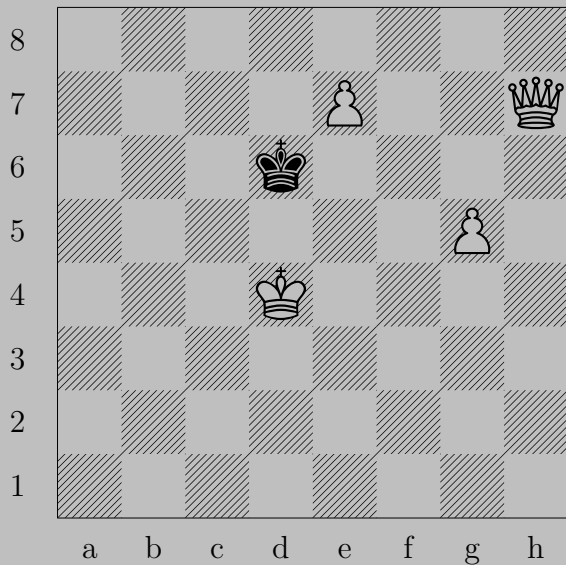
2913



$\text{Nc6+}$

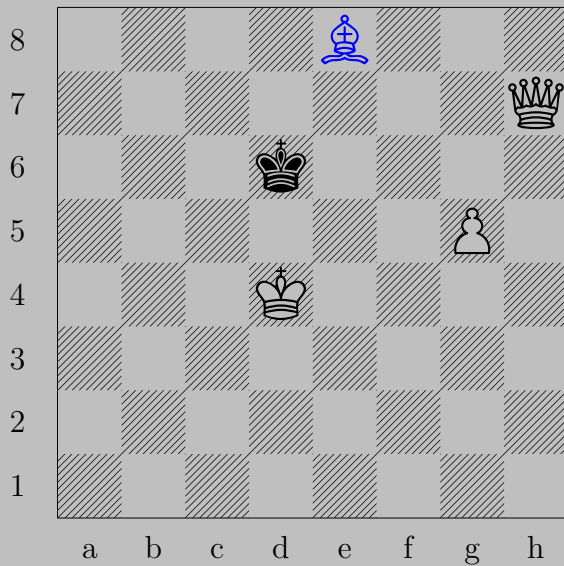
if  $\text{Kxc6}$ ,  $\text{Qd7}$ . If  $\text{Kb7}$ ,  $\text{Qc8}$ . If  $\text{Kb5}$ ,  $\text{Rc2}$ . If  $\text{Ka6}$ ,  $\text{Rb2}$ .

2914



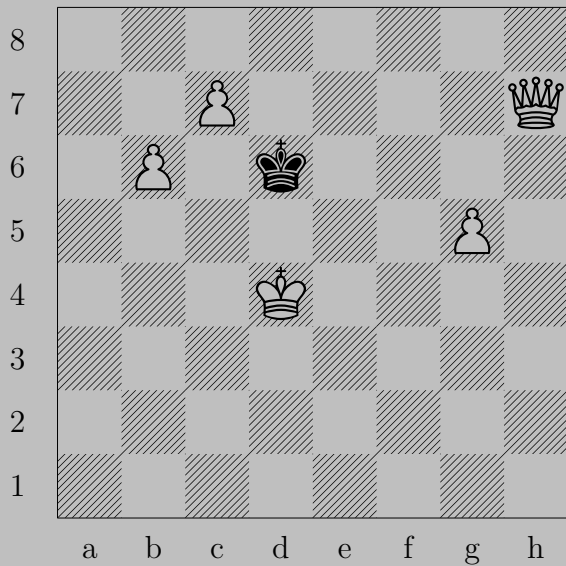
H. Staudte, 1964

2914



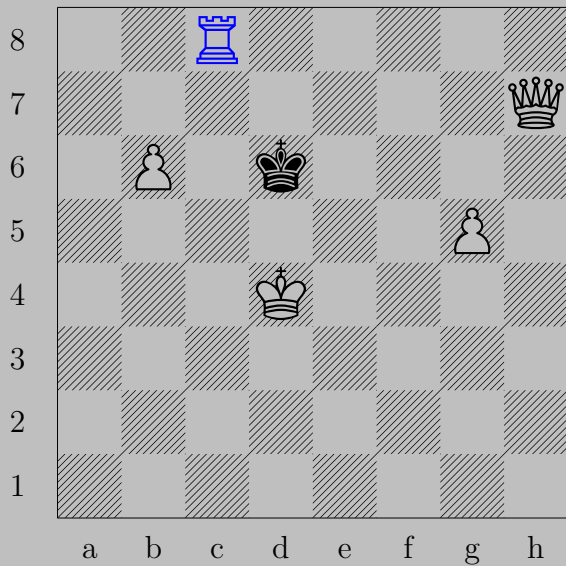
$\text{♗e8}$ (♗),  $\text{♔e6}$   
 $\text{♔d7}$

2915



H. Staudte, 1964

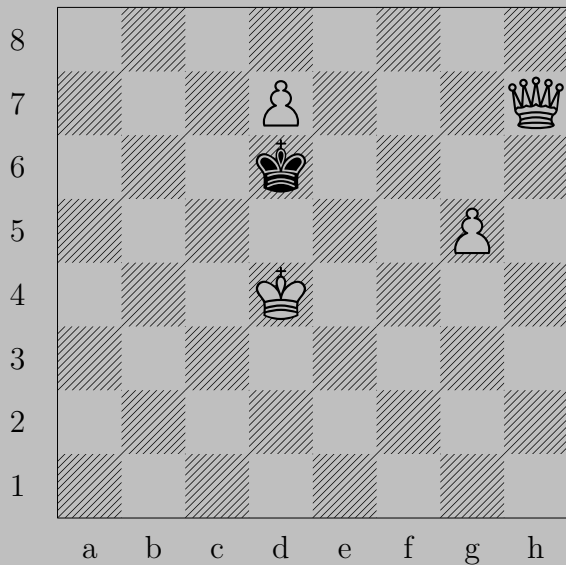
2915



$\text{♞c8}(\text{♖}), \text{♔e6}$   
 $\text{♖c6}$



2916



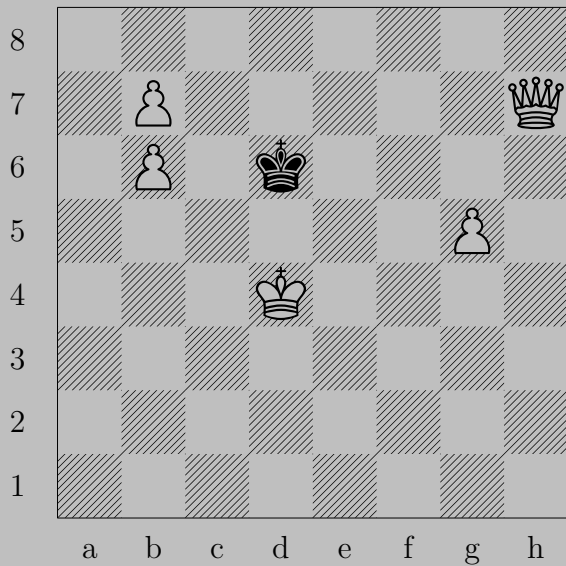
H. Staudte, 1964

2916



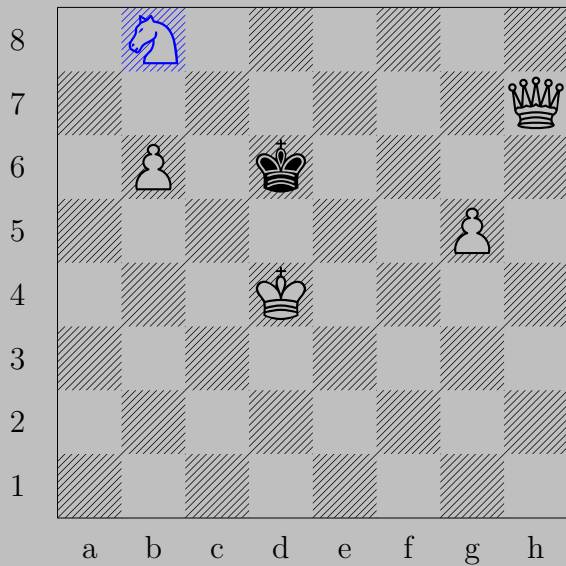
$\text{♔d8}(\text{♚})+$ ,  $\text{♚c6}$  or  $\text{♚e6}$   
 $\text{♚(h7)d7}$

2917



H. Staudte, 1964

2917



b8(), e6  
d7

2918



A. Steif, 1902

2918

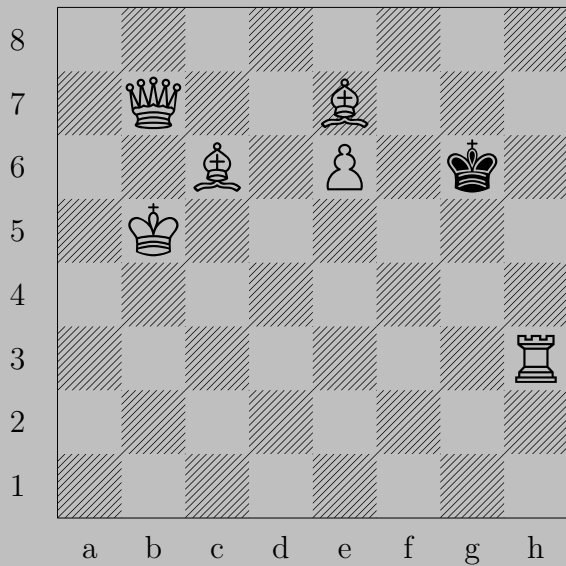


♙a8

If ♚d6, ♙a6. If ♚f5, ♙e4. If ♖d6, ♙c8. If ♖d5, ♙x d5.

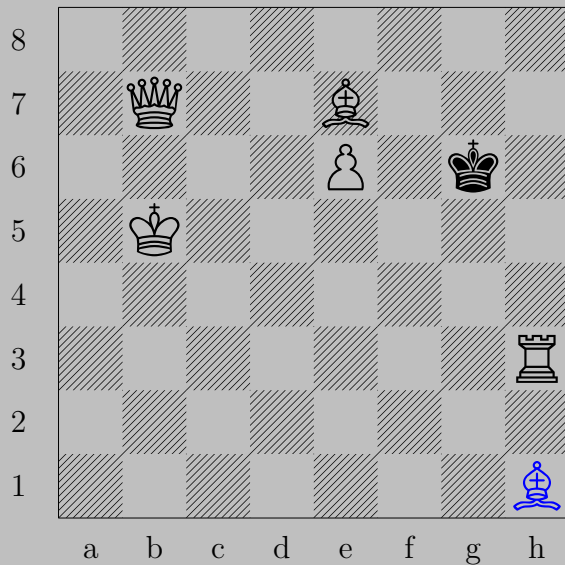
Otherwise, ♙d5.

2919



P. Steiner, 1989

2919

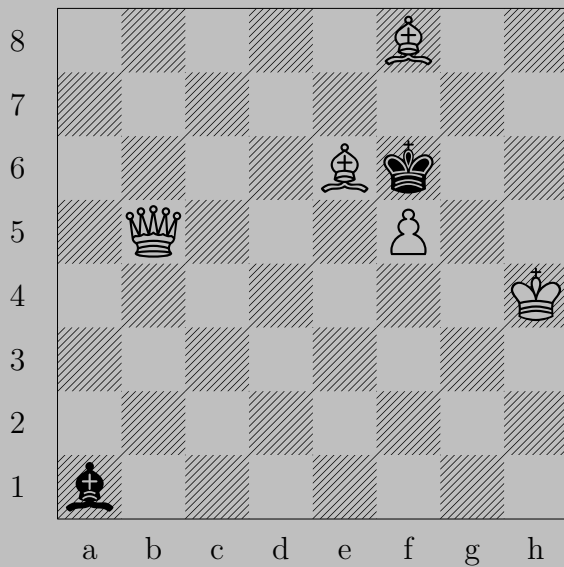


♖h1

If ♔f5, ♔e4. If ♔g7, ♔g2.

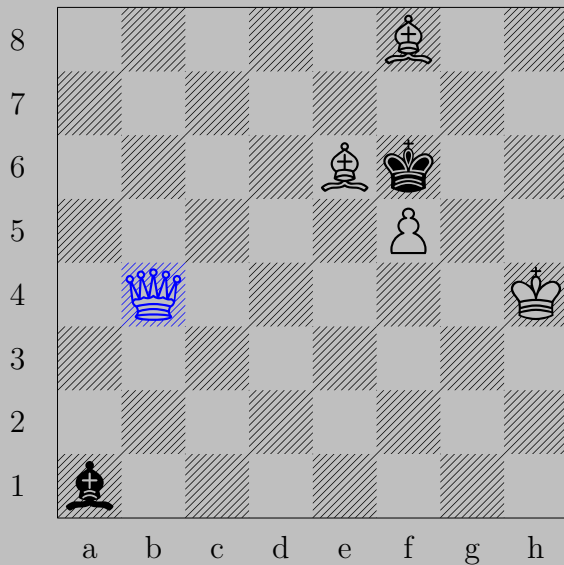


2920



P. Steiner, 1988

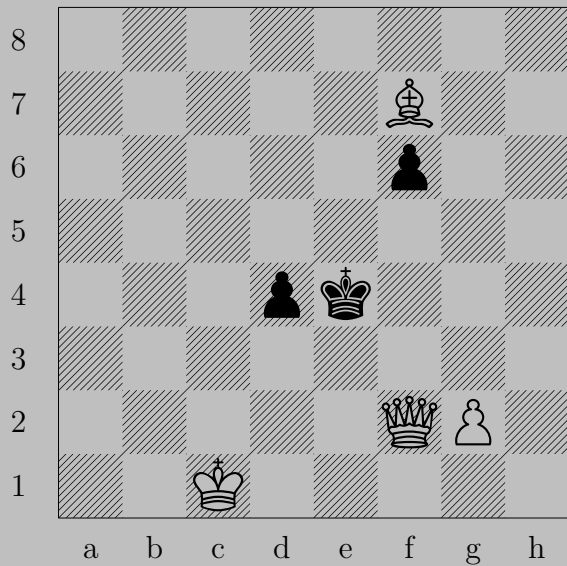
2920



♙b4

If ♖e5, ♙g7. If ♙e5, ♙e7. If ♙b2-d4, ♙x♙.

2921



R. Steinmann, 1902

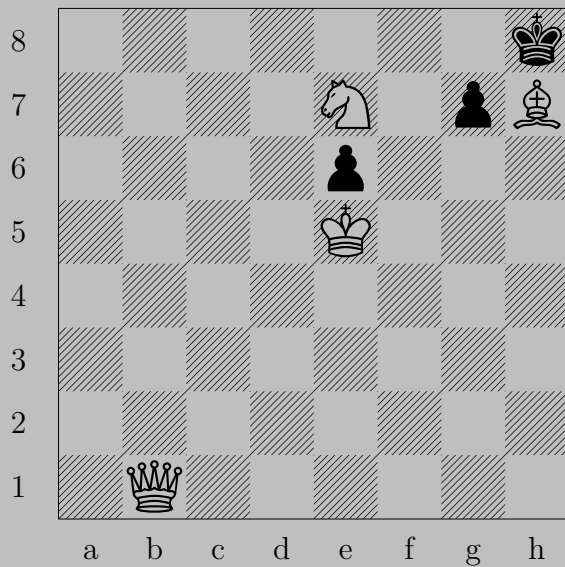
2921



$\triangleleft$ g4

If  $\text{♔}$ e5 or  $\triangleleft$ d3,  $\text{♕}$ f4. If  $\text{♔}$ d3,  $\text{♕}$ f3. If  $\triangleleft$ f4,  $\text{♕}$ e2.

2922



R. Steinweg, 1903

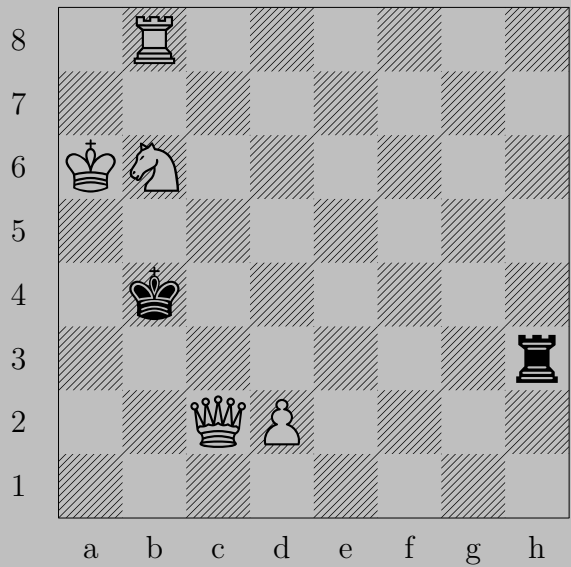
2922



♔b7

If ♔xh7, ♔h1. If ♟g5, ♞g6. If ♟g6, ♞xg6.

2923



O. Stocchi, 1929

2923



$\text{♙d4}$

If  $\text{♜h5-h8}$ ,  $\text{♚b2}$ .

Otherwise,  $\text{♞c4}$ .



2924



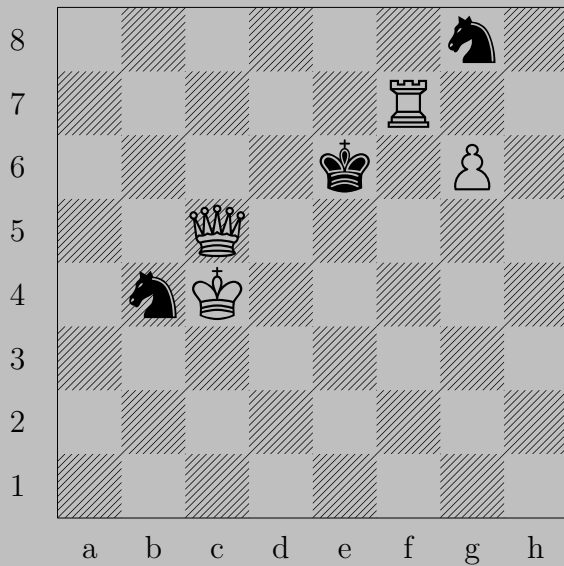
O. Stocchi, 1929



♔g3

If ♔f7, ♞d6. If ♔e6, ♞e3. If ♖e6, ♔g7. If ♖e5, ♔g6.

2925



O. Stocchi, 1934

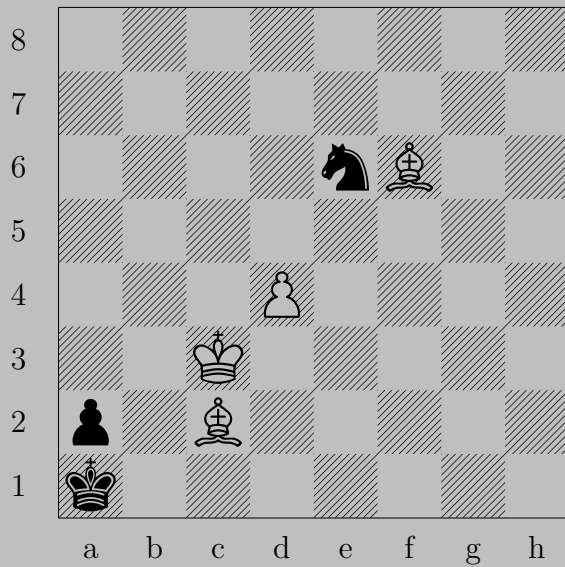
2925

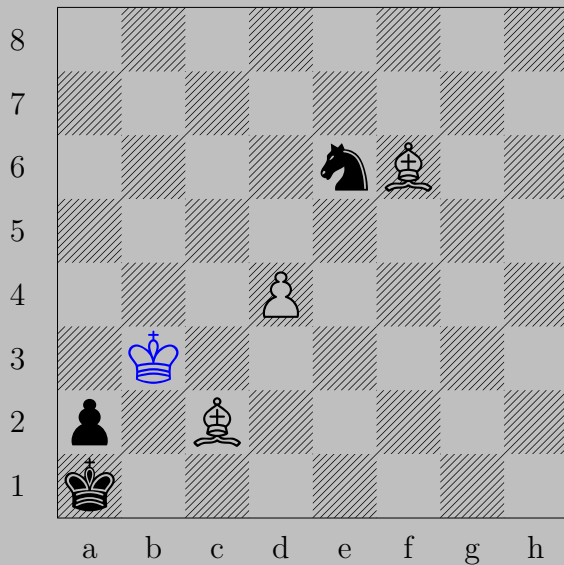


♙d4

If ♘f6, ♙×f6. If ♘e7 or ♘h6, ♙f6.

If ♘d5, ♙×d5. Otherwise, ♙d5.





♔b3

If ♖xd4+, ♕xd4. If ♖c5+, ♖xc5.

Otherwise, ♖d5.

2927



P. Strigunov, 1958

2927

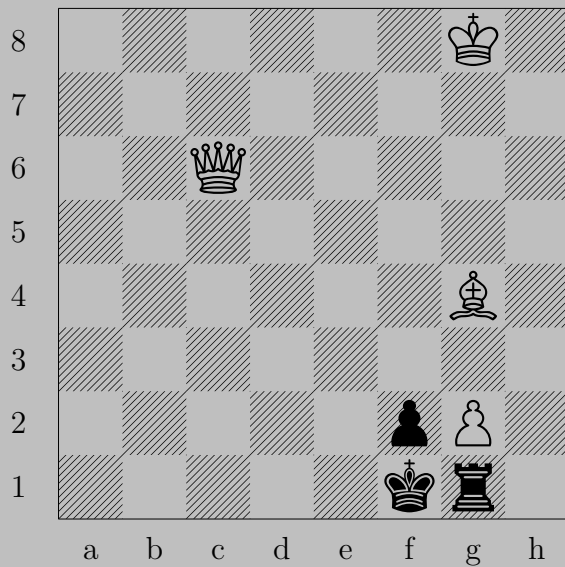


♘g5

If ♔e1, ♕h4. If ♖e1(♔), ♖f7. If ♖e1(♘), ♖d2.

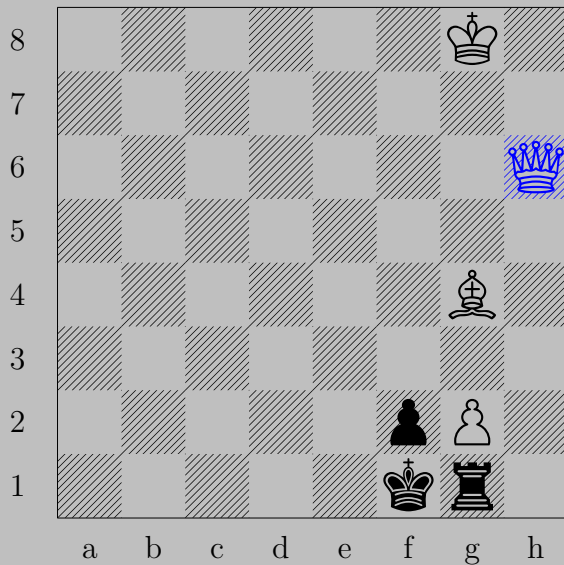


2928



A. Studenetzky, 1958

2928



$\text{Qh6}$

If  $\text{Kxg2}$ ,  $\text{Qh3}$ . If  $\text{Ke1}$  or  $\text{Rxg2}$ ,  $\text{Qc1}$ . If  $\text{Rh1}$ ,  $\text{Qxh1}$ .

2929



V. Sushkov, 1973

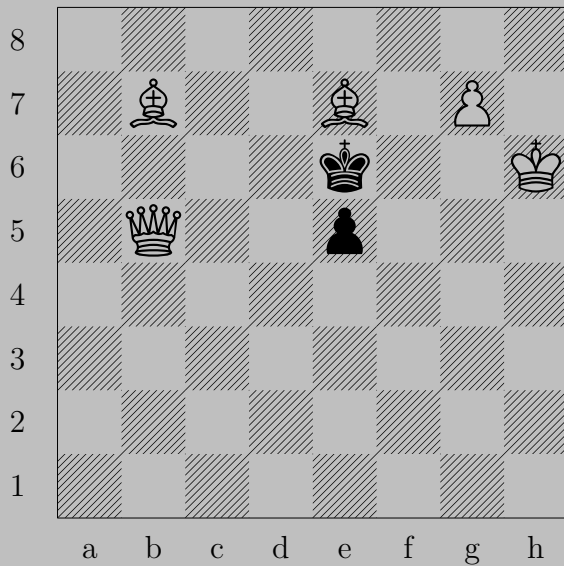
2929



$\text{R}h5$

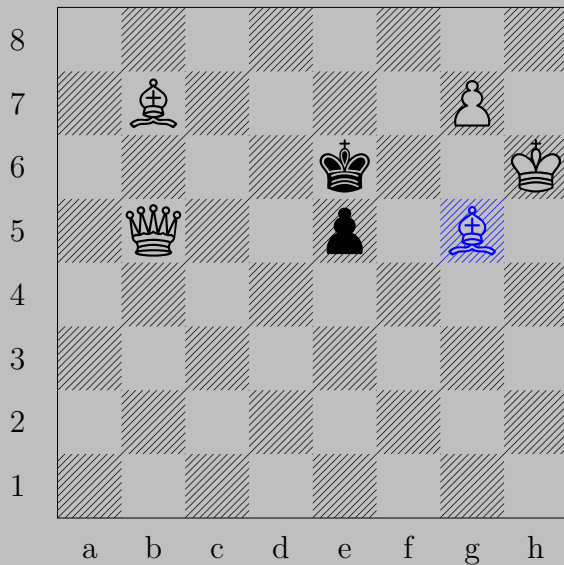
If  $\text{K}e3$ ,  $\text{R}h3$ . If  $\text{K}g2$ ,  $\text{Q}a8$ . If  $\text{K}g4$ ,  $\text{Q}d1$ .

2930



V. Sushkov, 1981

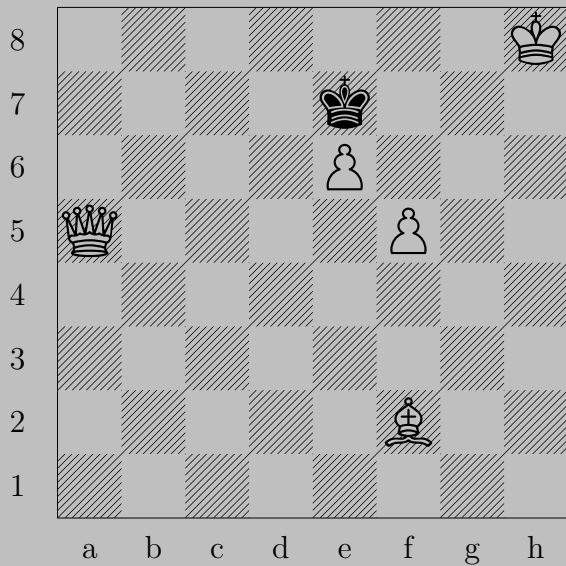
2930



$\text{♗g5}$

If  $\text{♕e4}$ ,  $\text{♑d5}$ . If  $\text{♖d6}$ ,  $\text{♑c6}$ . If  $\text{♗f5}$ ,  $\text{♑d7}$ . If  $\text{♗f7}$ ,  $\text{♗d5}$ .

2931







I. Surat kai, 1985

2931



b5

If d6, c5. If d8, d7. If f8, c5. If f6, h4.



2932



I. Suratkai, 1985

2932



♔h2

If ♔×e6, ♙h3. If ♔e4, ♚f4. If ♔g4, ♚h3. If ♔g6, ♙d3.

2933



Y. Sushkov, 1986

2933



♔e1

If ♖×a3, ♕c4. If ♖b3, ♕a6. If ♔a5, ♕b5.

2934



Y. Sushkov, 1986

2934



♖c5

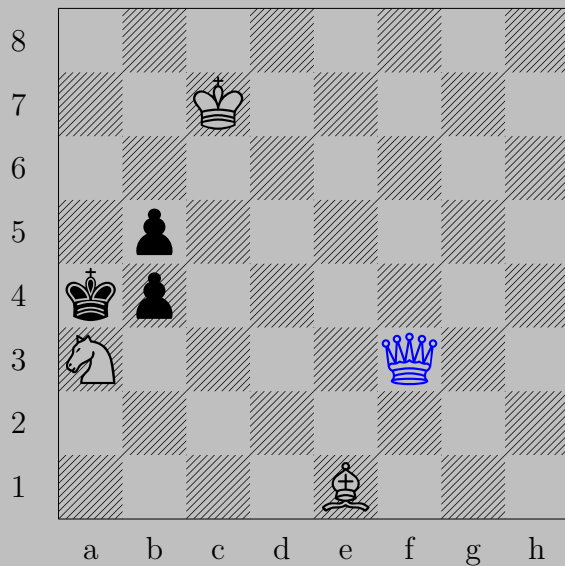
If ♟×a3, ♚×a3. If ♟b3 or ♚a5, ♚×b5.

2935



Y. Sushkov, 1986

2935



♙f3

If ♟×a3, ♚d1. If ♟b3 or ♙a5, ♚a8.



2936



A. Sutter, 1952

2936



$\text{♞h5}$

If  $\text{♞f4}$ ,  $\text{♞}\times\text{f4}$ . If  $\text{♞f5}$ ,  $\text{♞}\times\text{f5}$ .

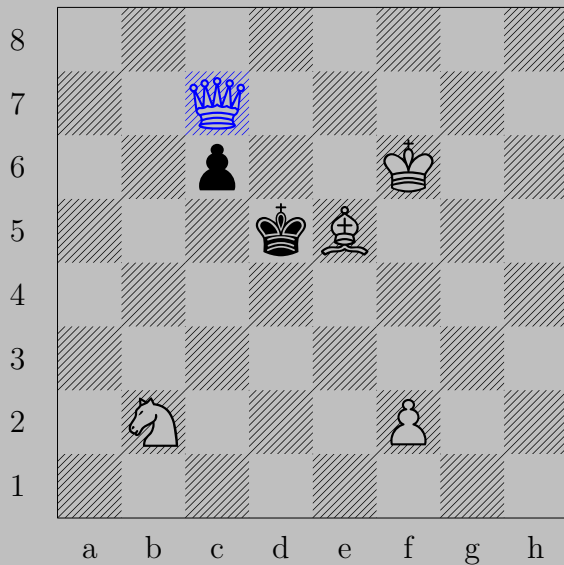
Otherwise,  $\text{♞f6}$ .

2937



R. Svoboda, 1948

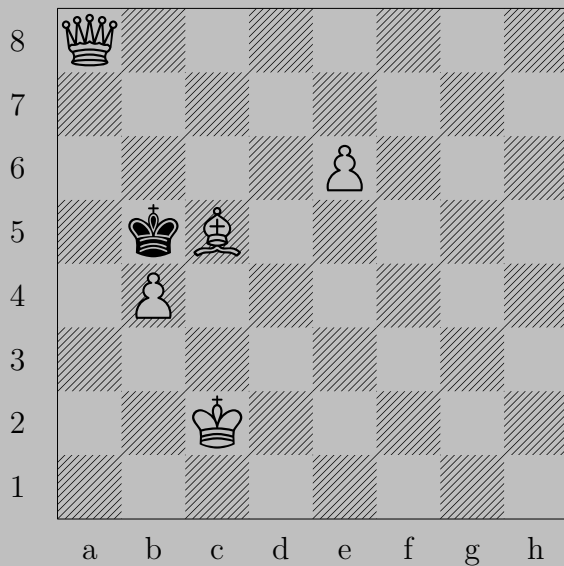
2937



♙c7

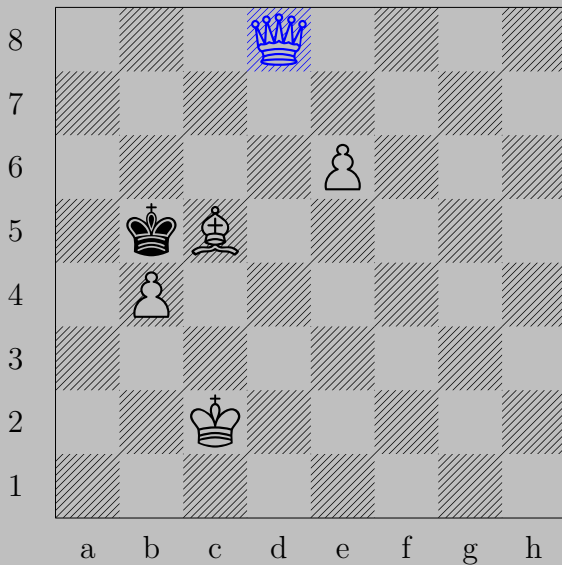
If ♖c5, ♙b7. If ♙c5, ♙a5. If ♙e4, ♙xc6.

2938



I. Szabó, 1978

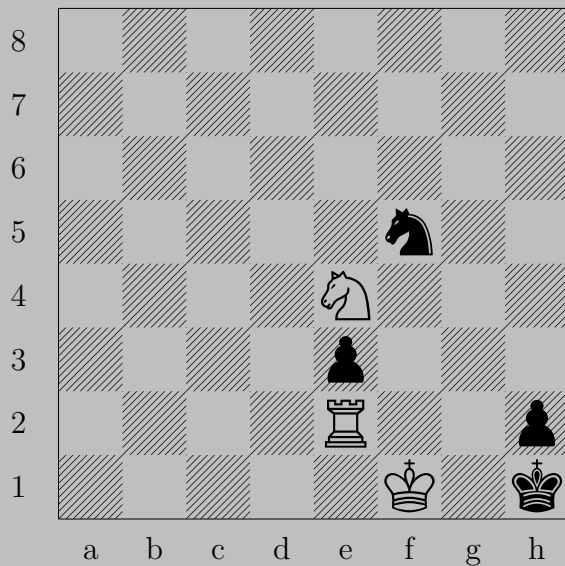
2938



♙d8

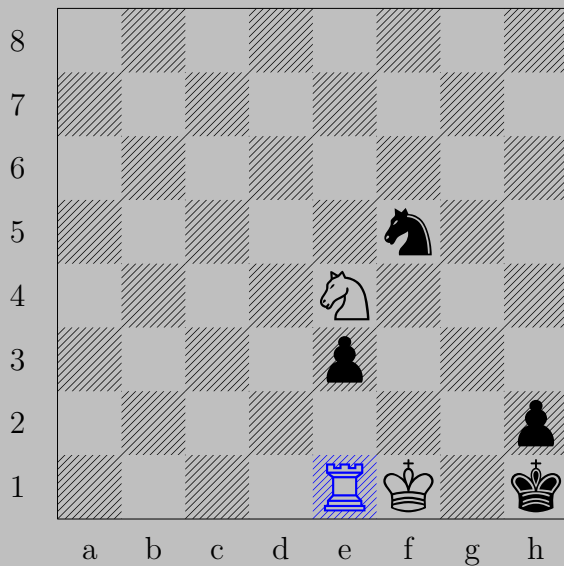
If ♙a6, ♙b6. If ♙a4, ♙a5. If ♙c4, ♙d3. If ♙c6, ♙d7.

2939



L. Szdsz, 1926

2939



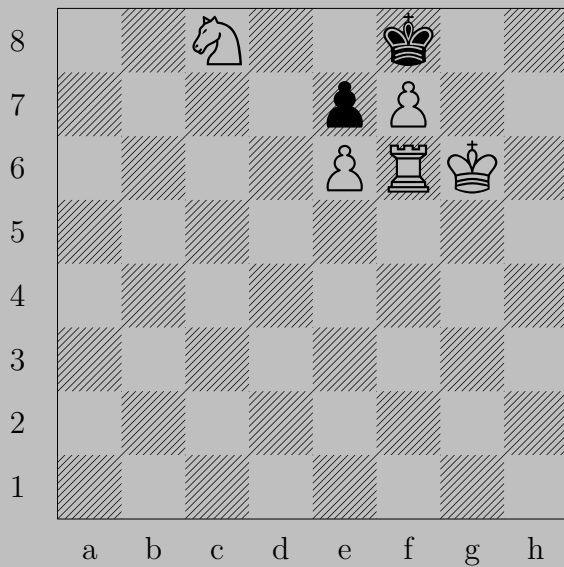
♖e1

If ♜e2+, ♔f2. If ♞g3+, ♞xg3.

Otherwise, ♞g3.

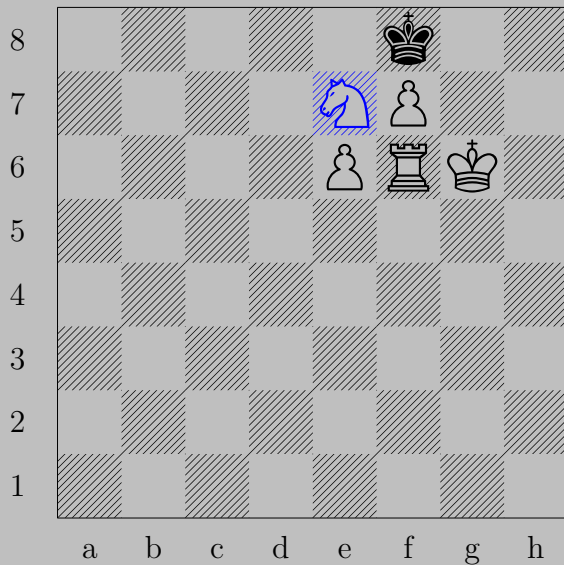


2940



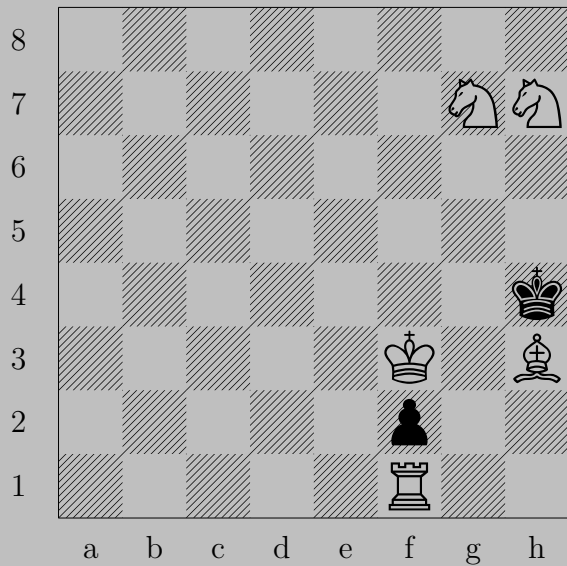
L. Szdsz, 1927

2940



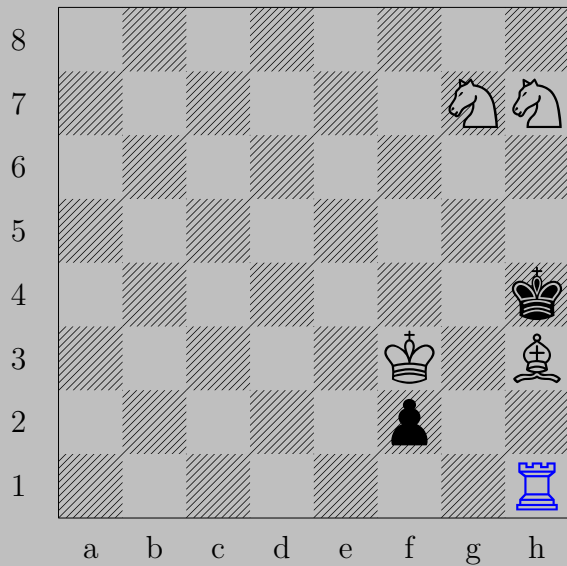
$\text{♞} \times e7, \text{♔} \times e7$   
 $\text{♕} f8(\text{♔})$

2941



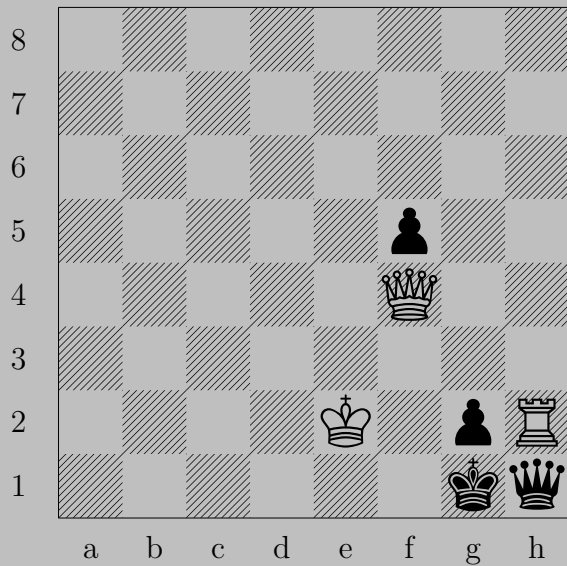
L. Szdsz, 1927

2941



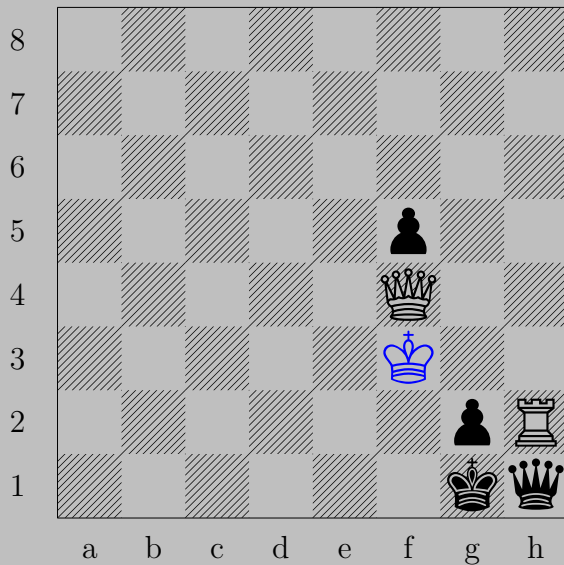
$\text{♖h1}, \text{♙f1}(\text{♔})+$   
 $\text{♞xg7}$

2942



L. Szdsz, 1927

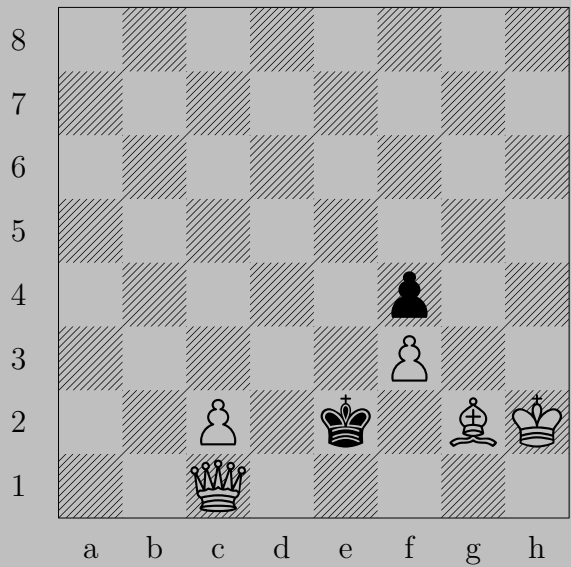
2942



♔f3, ♖xh2 or ♔f1

♔c1

2943



L. Szdsz, 1927

2943

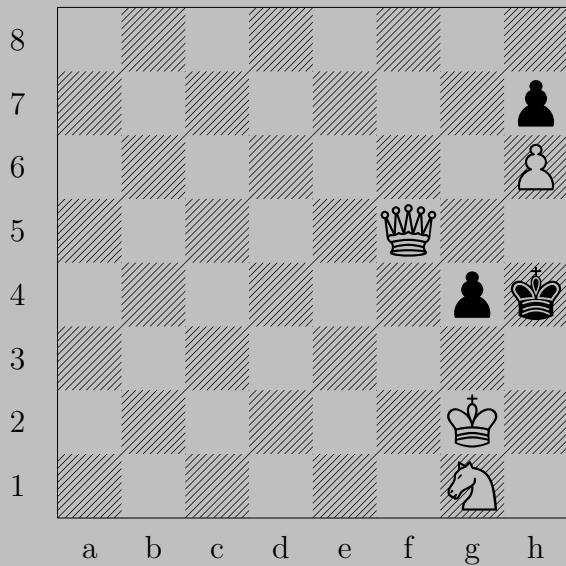


♖c3

If ♔d3, ♕f1. If ♔f2, ♖d2.

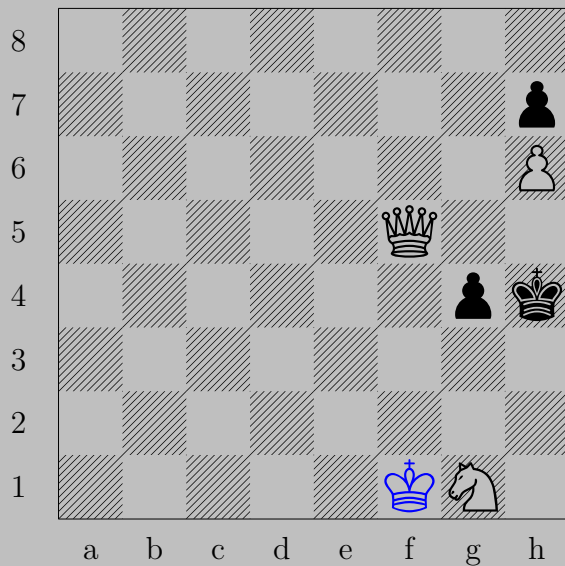


2944



L. Szdsz, 1927

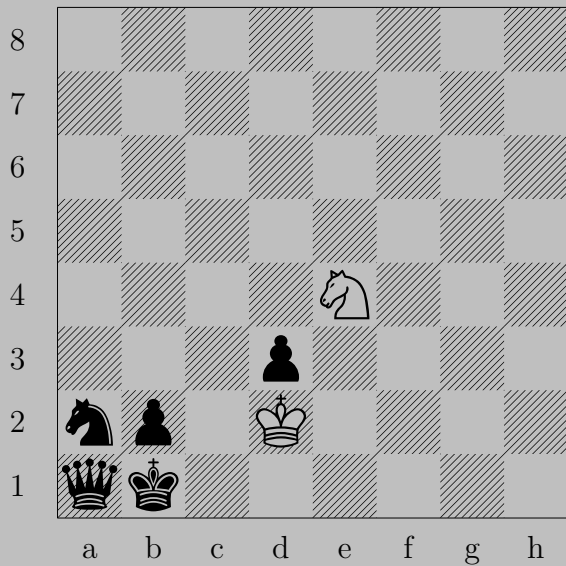
2944



f1

If g3, f2. If g3, f3.

2945



L. Szdsz, 1926

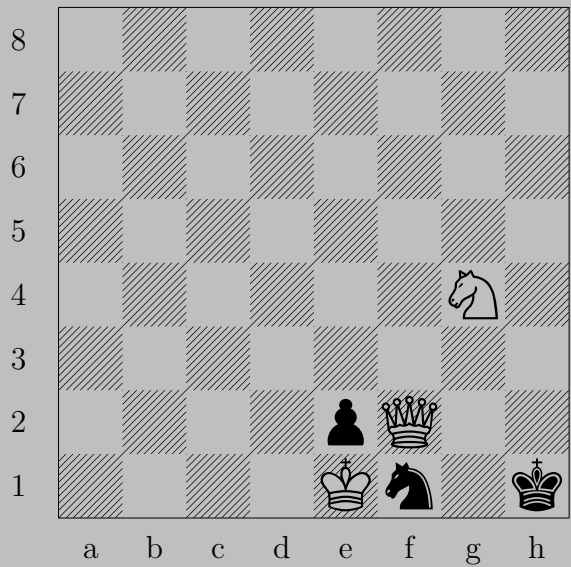
2945



♔d1

If ♘c3+, ♘xc3. If ♙d2, ♘xd2. If ♘b4 or ♘c1, ♘c3.

2946



L. Szdsz, 1927

2946



♙×e2

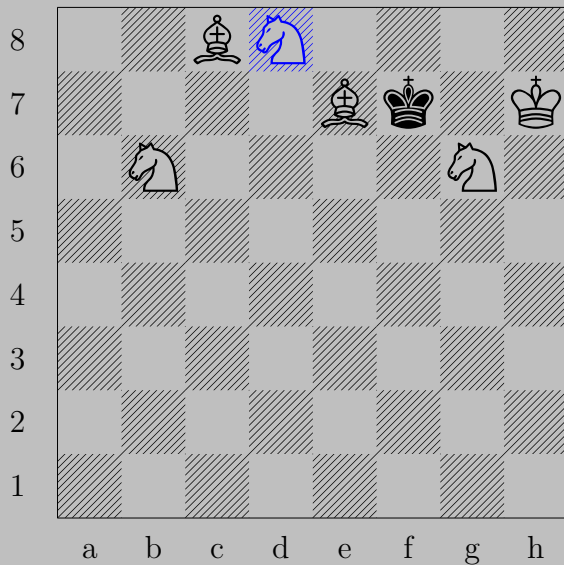
If ♘d2 or ♘e3 or ♘g3, ♙h2. If ♘h2, ♙×h2. If ♚g1, ♙×f1.

2947



L. Szdsz - N. Kovacs, 1926

2947



♞d8(♞)+, ♔e8  
♚d7

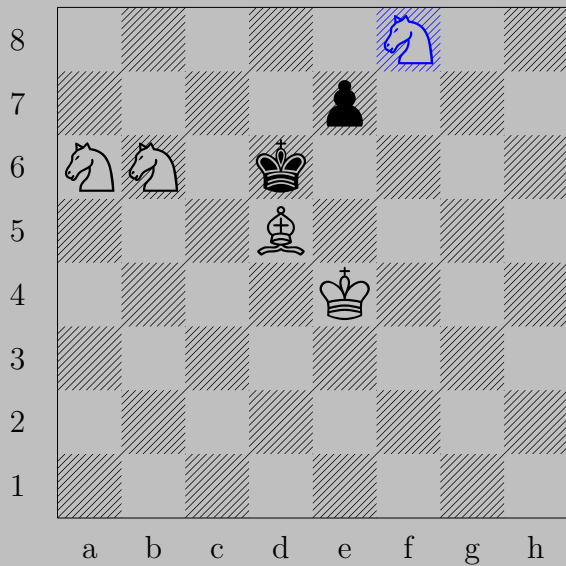


2948



L. Szdsz - Gy. Shiffert - E. Szentgyörgyi, 1928

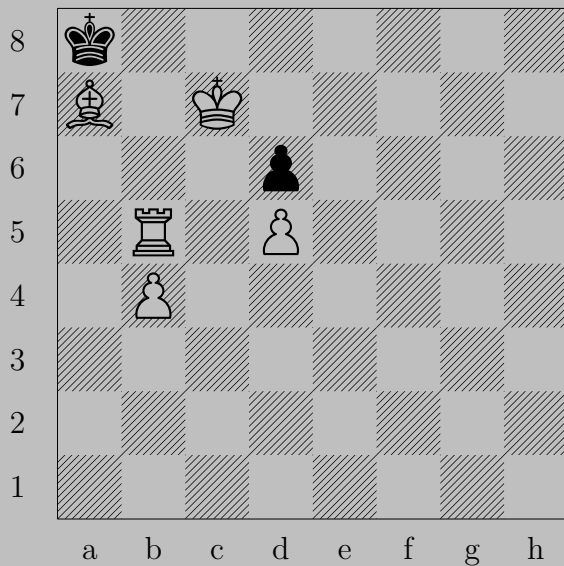
2948



$\triangleleft f8$  (♞),  $\triangleleft e6$  or  $\triangleleft e5$

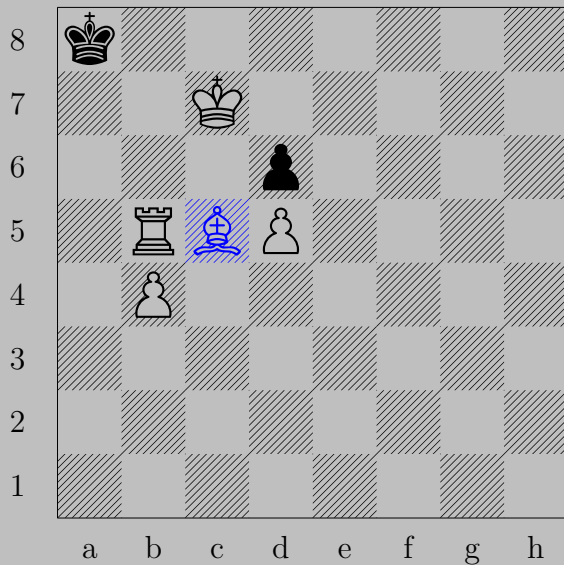
♞c8

2949



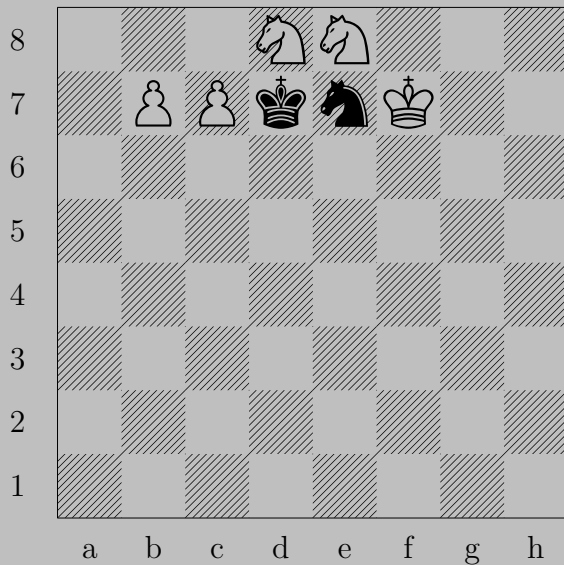
L. Szdsz - N. Kovacs, 1927

2949



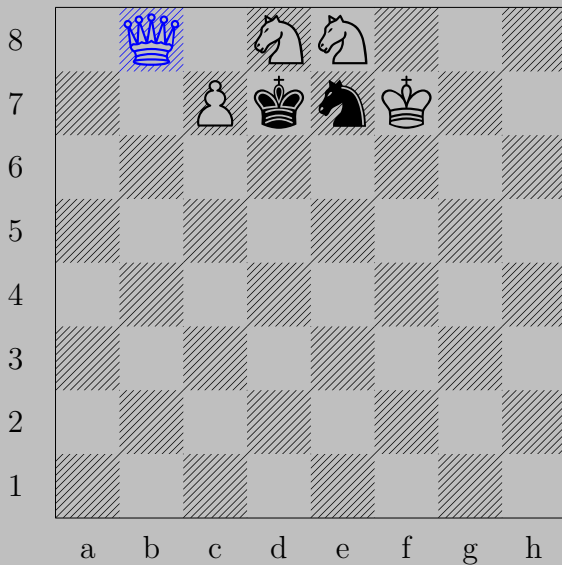
♙c5, ♖xc5  
♖a5

2950



E. Szentgyörgyi, 1926

2950

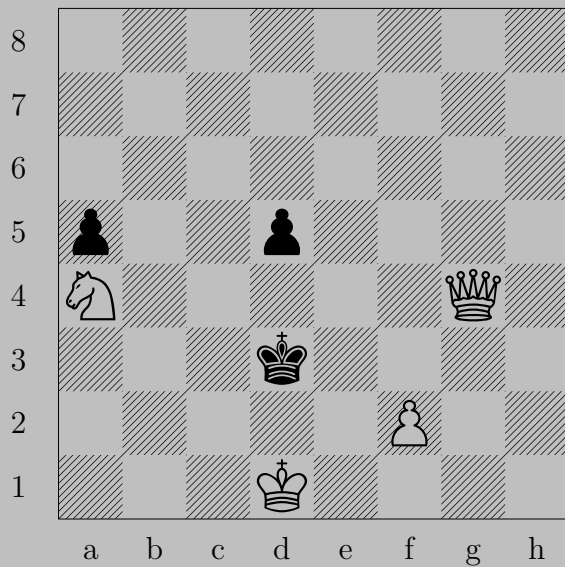


$\Delta b8(\text{♙})$

If  $\Delta c8, \text{♙}b5$ .

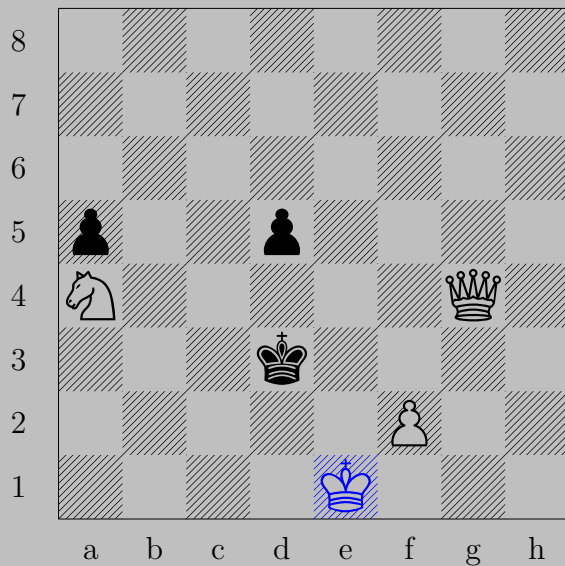
Otherwise,  $\Delta c8(\text{♙})$ .

2951



E. Szentgyörgyi, 1928

2951

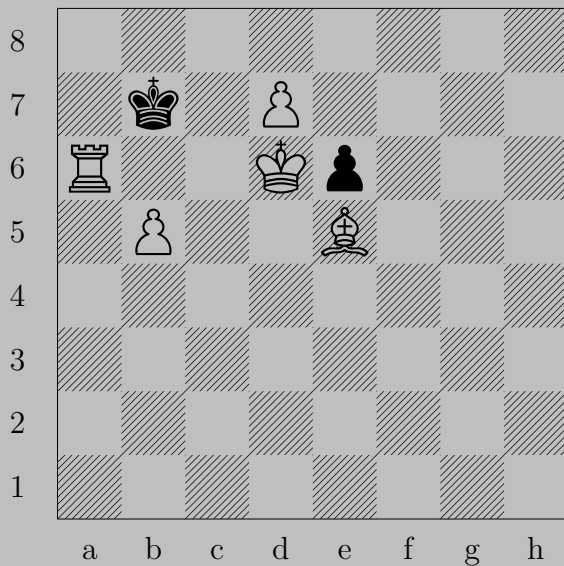


♔e1

If ♔c2, ♔d1. If ♖d4, ♔e2.

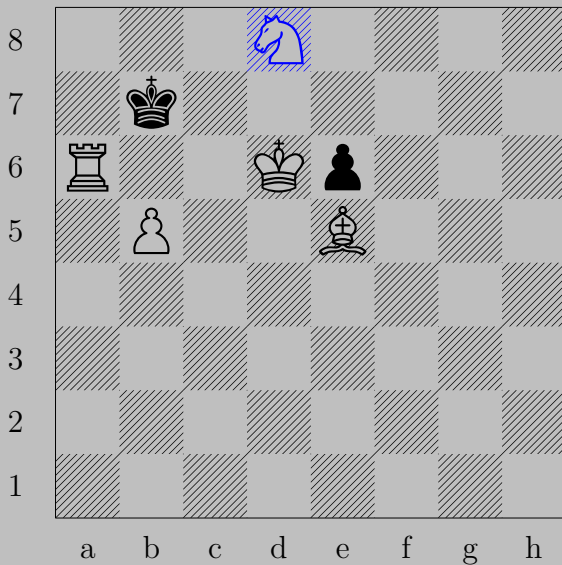


2952



E. Szentgyörgyi, 1928

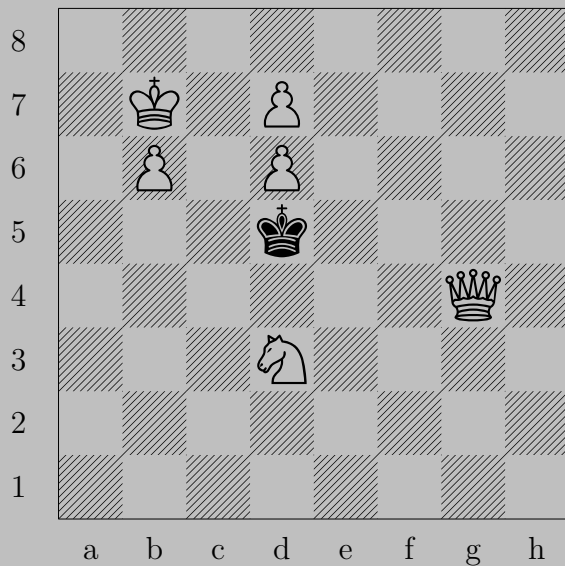
2952



$\text{♞d8}(\text{♞})+$

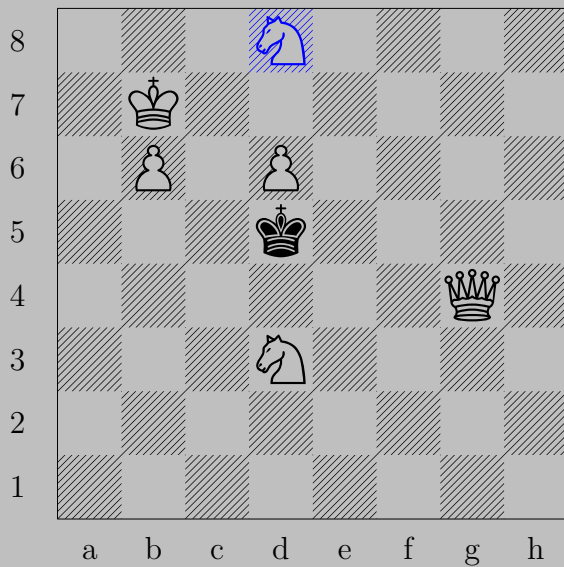
If  $\text{♞b8}$ ,  $\text{♞d7}$ . If  $\text{♞c8}$ ,  $\text{♞a8}$ .

2953



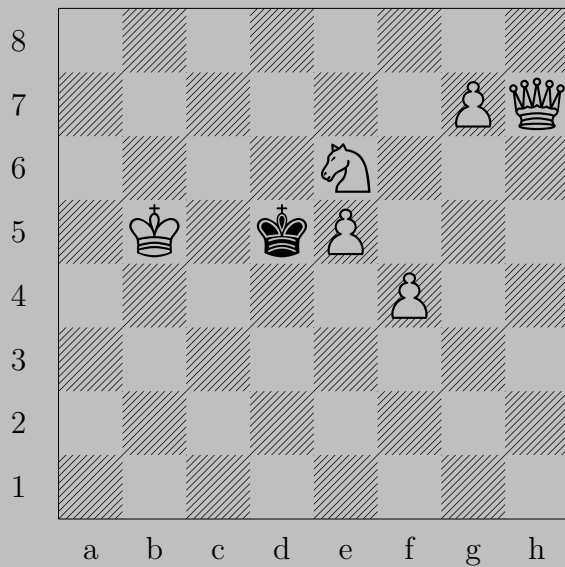
E. Szentgyörgyi, 1928

2953



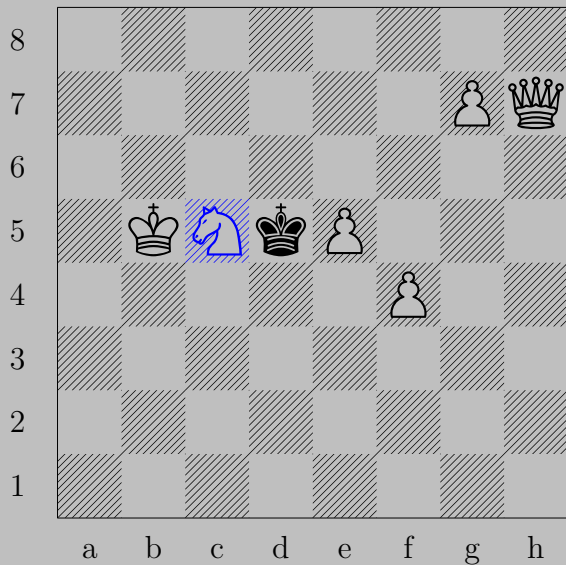
♞d8(♞), ♔×d6  
♔e6




2954



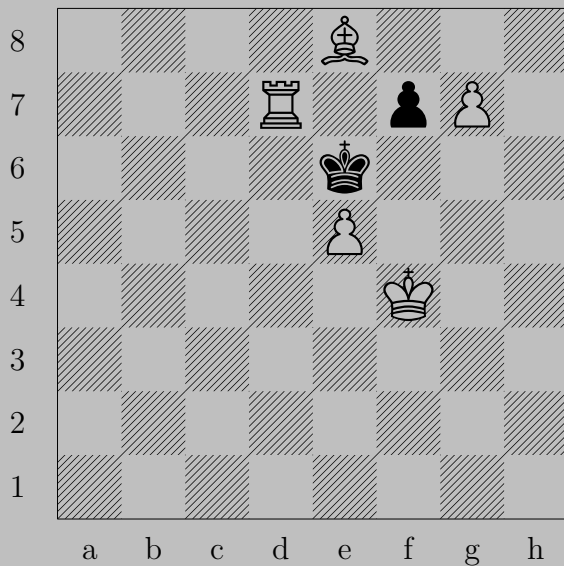
E. Szentgyörgyi, 1928

2954



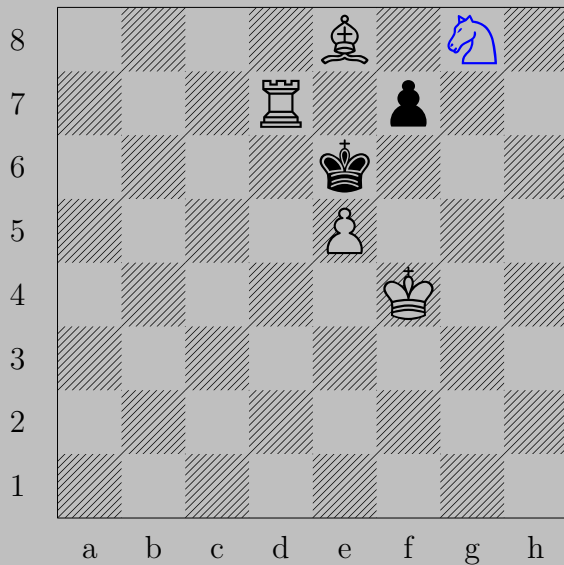
c5, d4  
d3

2955



E. Szentgyörgyi, 1928

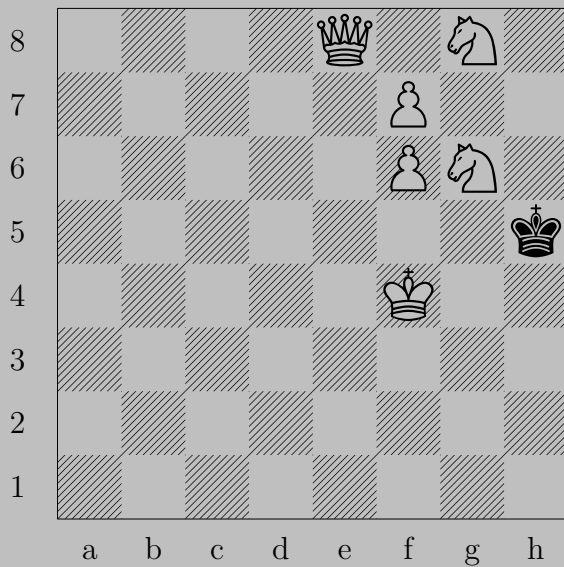
2955



$\text{♞g8}$  ( $\text{♞}$ ),  $\text{♟f6}$  or  $\text{♞f5}$   
 $\text{♞d6}$

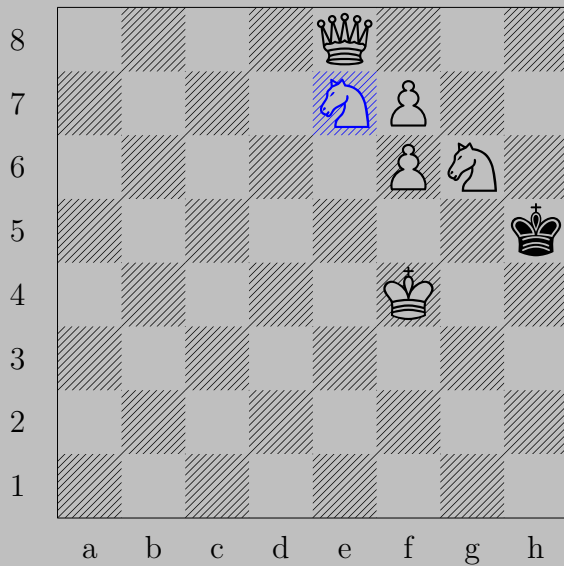


2956



E. Szentgyörgyi, 1928

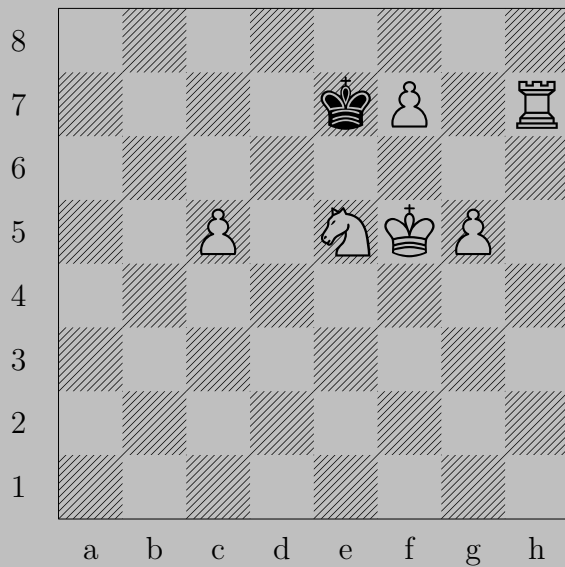
2956



$\text{♞}(g8)e7, \text{♔}h6$

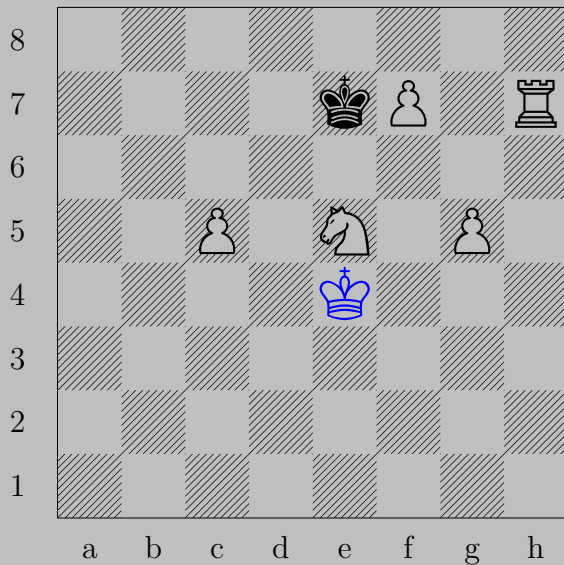
$\text{♚}h8$

2957



E. Szentgyörgyi, 1928

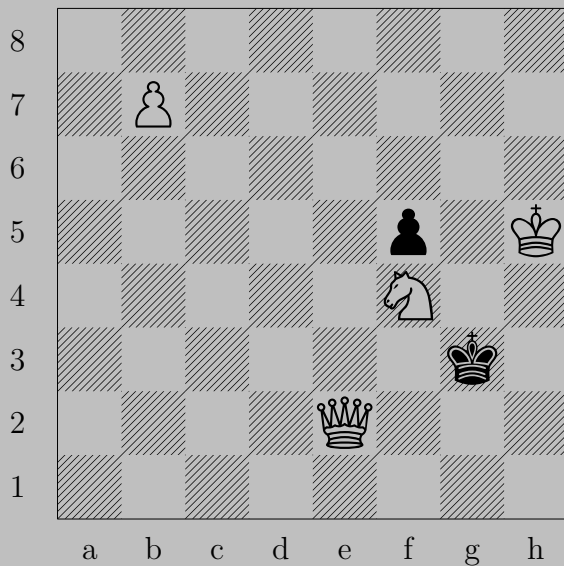
2957



♔e4

If ♔e6, ♙f8(♘). If ♔f8, ♘g6. If ♔d8, ♙f8(♔).

2958



E. Szentgyörgyi, 1928

2958



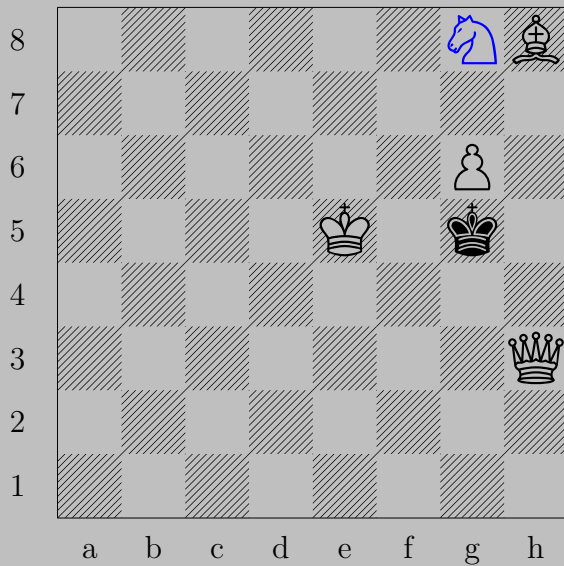
♔f1, ♔h2  
♔g2

2959



E. Szentgyörgyi, 1928

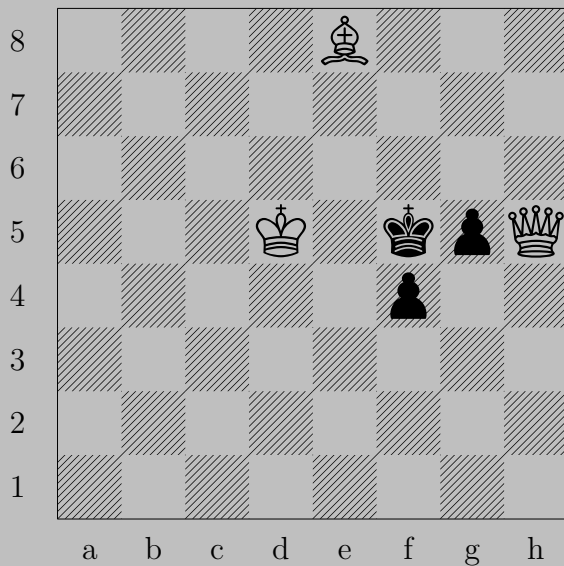
2959



$\triangleleft g8(\text{♞})$ ,  $\text{♚} \times g6$   
 $\text{♙} f5$

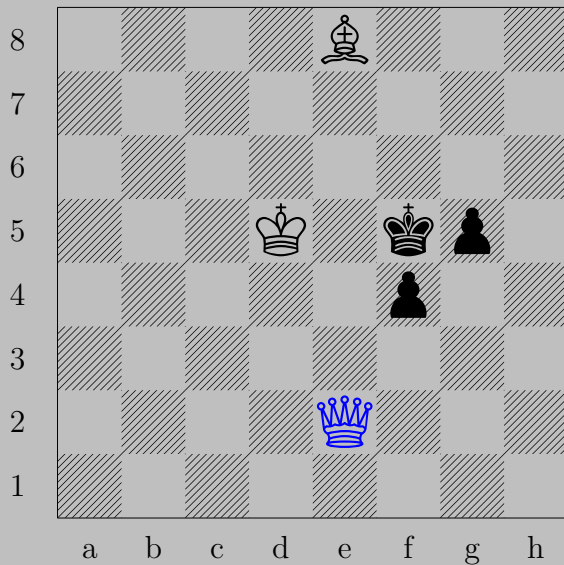


2960



E. Szentgyörgyi, 1928

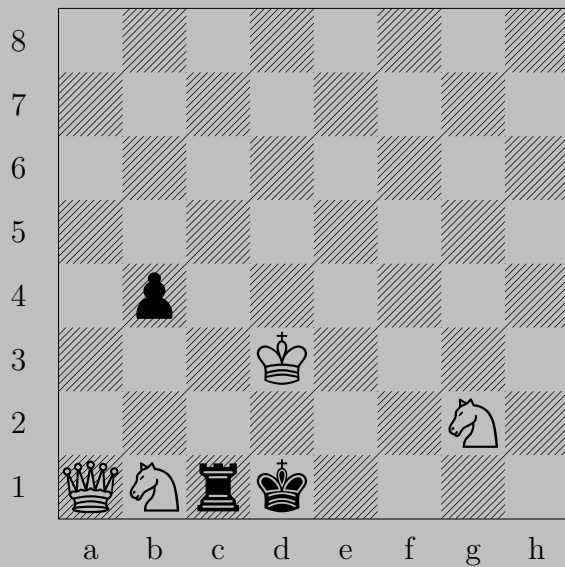
2960



♙e2

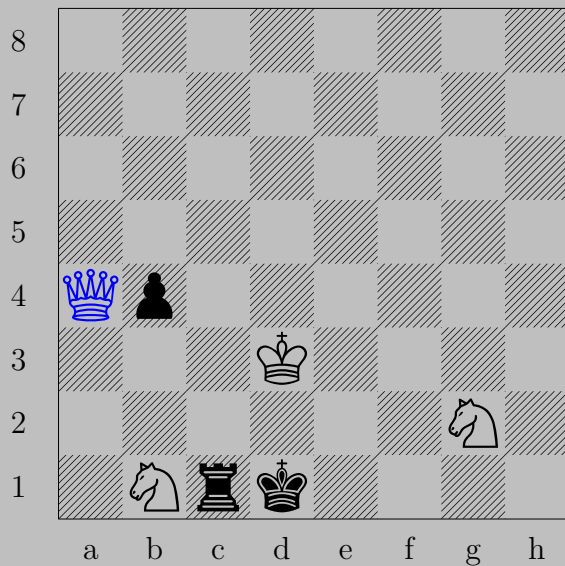
If ♔f6 or ♗g4, ♙e5. If ♗f3, ♙xf3.

2961



E. Szentgyörgyi, 1928

2961

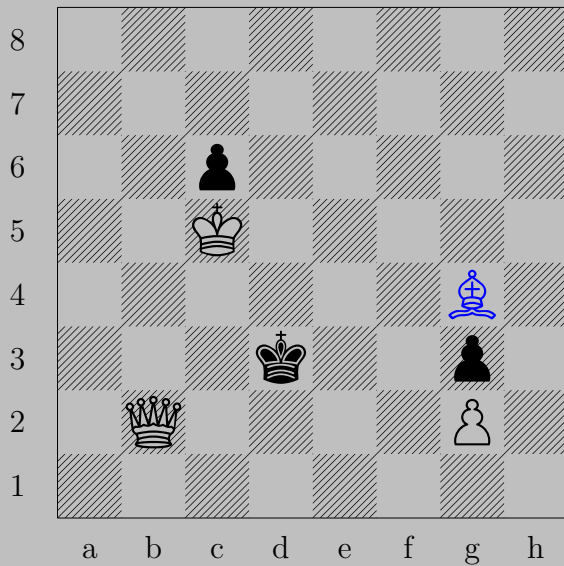


♔a4+

If ♘b3, ♔g4. If ♖c2, ♔xc2.

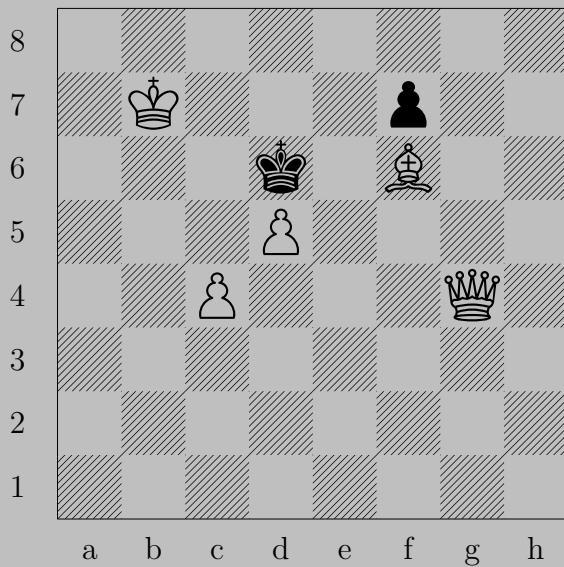


2962



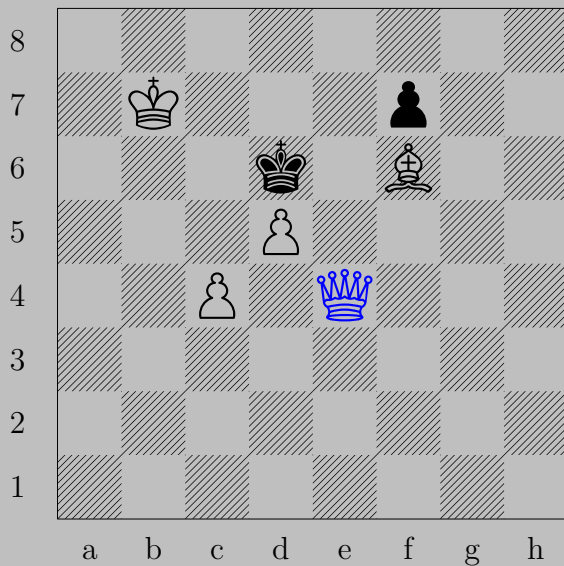
♔g4, ♖e3 or ♖e4  
♚d4

2963



E. Szentgyörgyi, 1929

2963

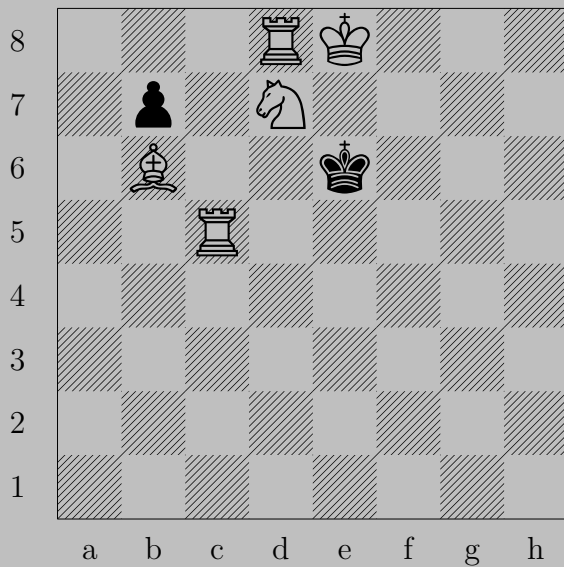


♔e4

If ♔c5, ♙e6. If ♔d7, ♙e6.



2964



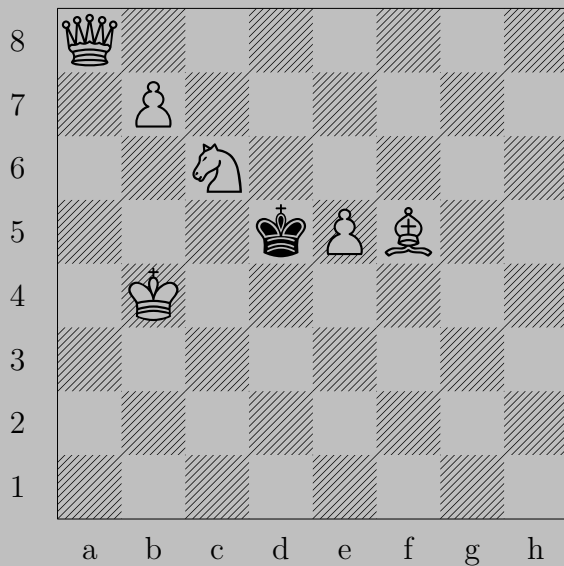
E. Szentgyörgyi, 1929

2964



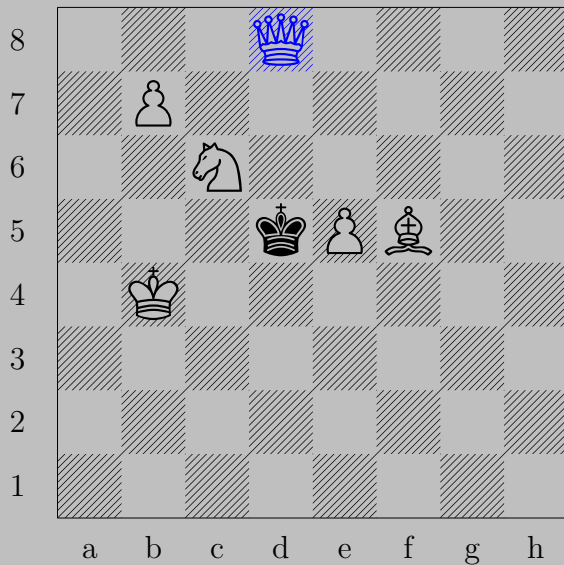
♙d7, ♖b6 or ♖b5  
♖e5

2965



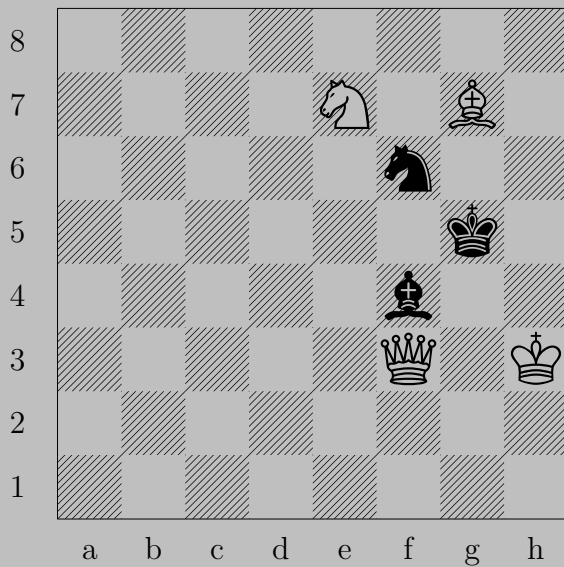
E. Szentgyörgyi, 1929

2965



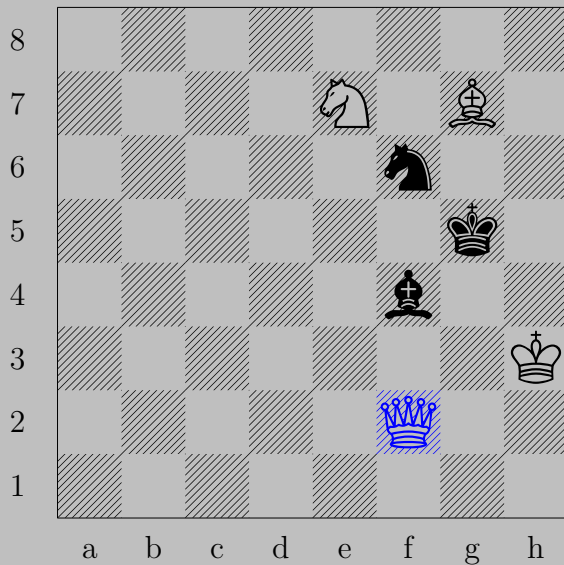
♔d8+, ♔xc6  
♚e4.

2966



E. Szentgyörgyi, 1929

2966

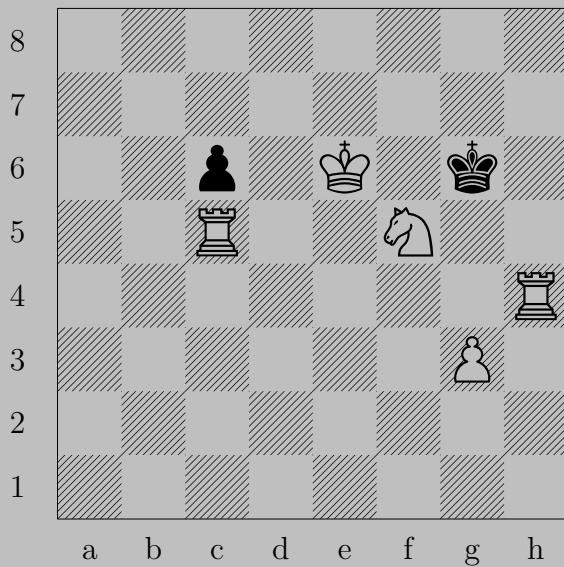


♔f2

If ♘g3, ♔f5.

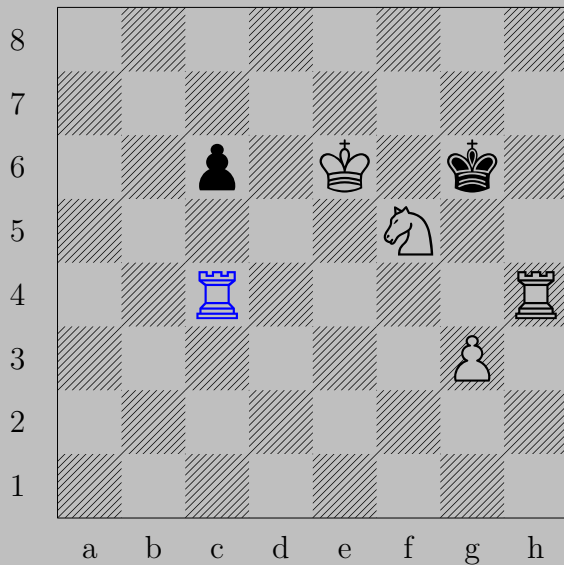
Otherwise, ♔h4.

2967



E. Szentgyörgyi, 1929

2967

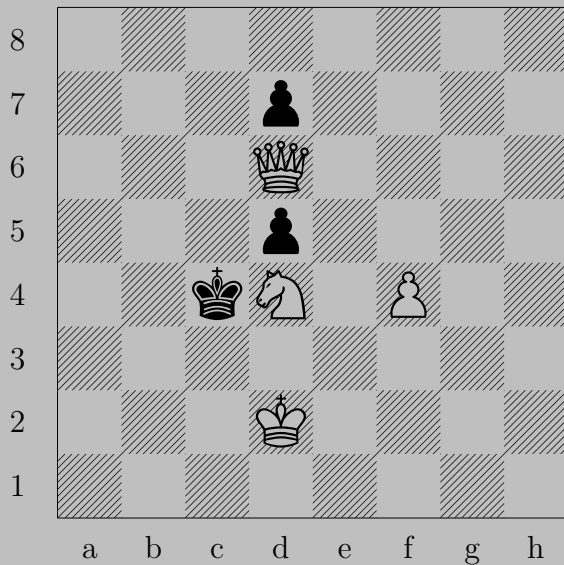


$\text{♙}(c5)c4$ ,  $\text{♜}c5$  or  $\text{♚}g5$

$\text{♜}(c4)g4$

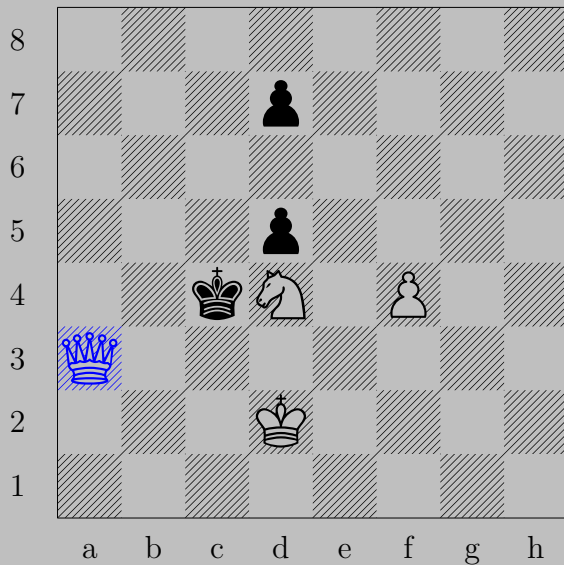


2968



E. Szentgyörgyi, 1929

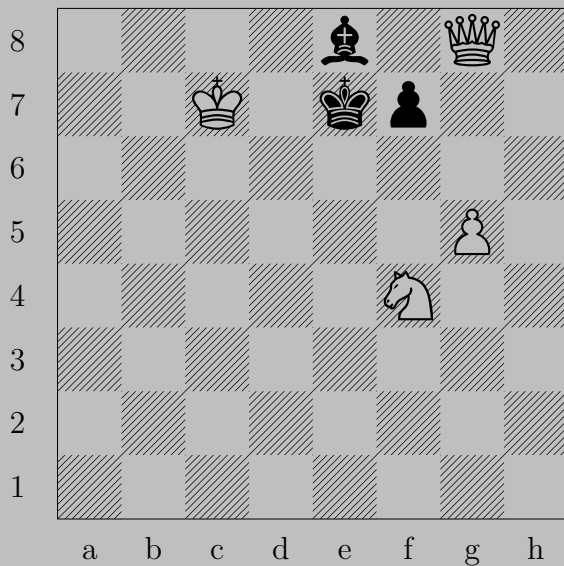
2968



♙a3

If ♚xd4, ♙b4. If ♜d6, ♙c3.

2969



E. Szentgyörgyi, 1929



♙h8

If ♔a4-d7, ♙d8. If ♖f6, ♙×f6. If ♖f5, ♙f6.

2970



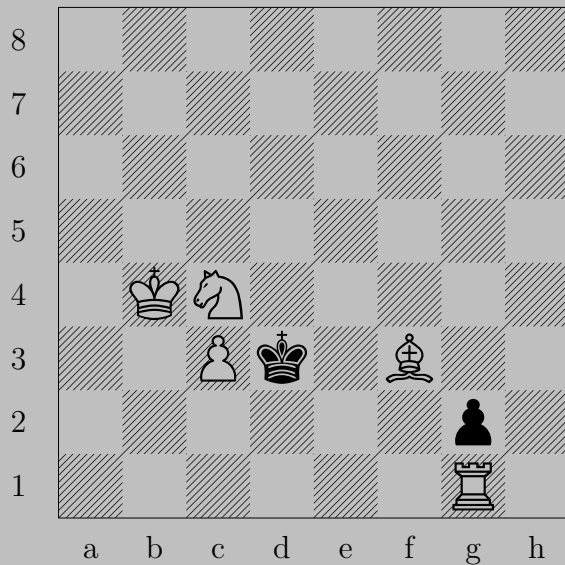
E. Szentgyörgyi, 1929

2970



♔h4, ♖g5+  
♔xg5

2971



E. Szentgyörgyi, 1929

2971

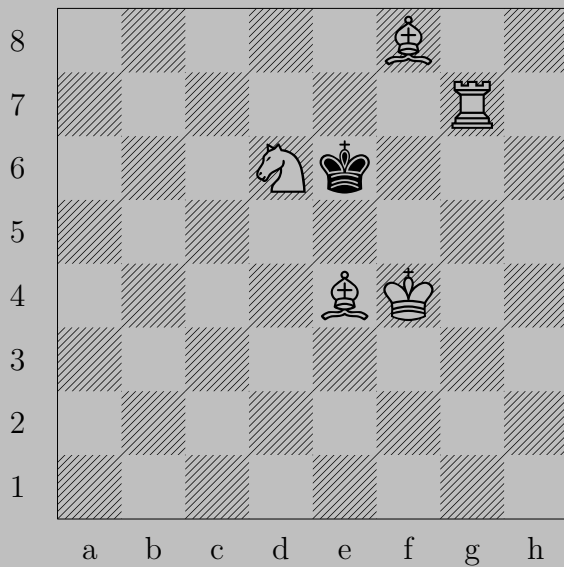


$\text{R}e1$ ,  $\text{K}c2$  or  $\text{P}f1(\text{K})$  or  $\text{P}f1(\text{N})$

$\text{N}e4$

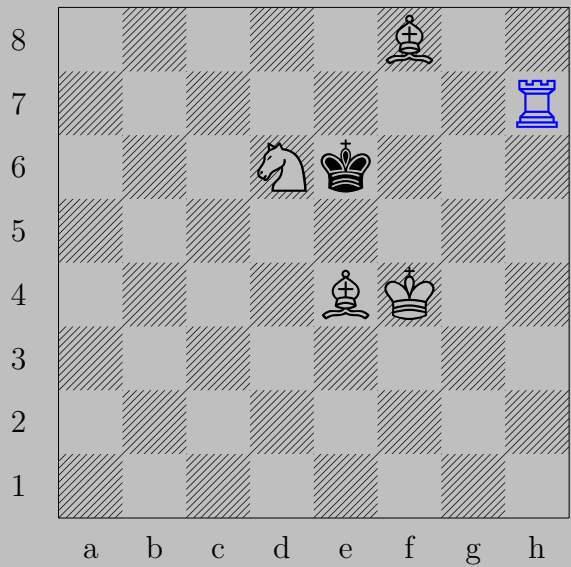


2972



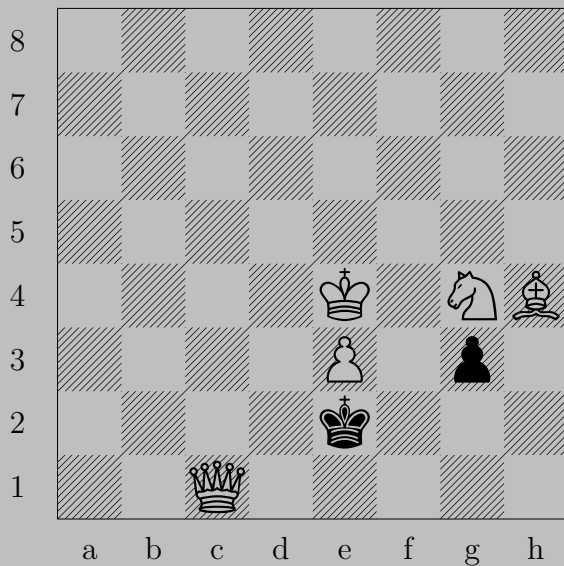
E. Szentgyörgyi, 1929

2972



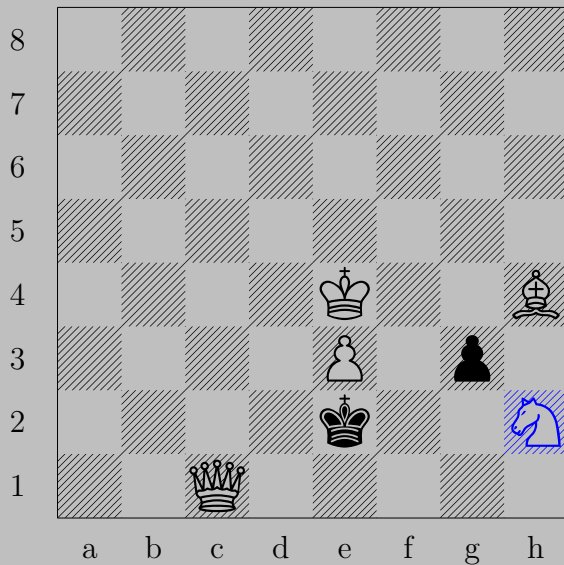
♖h7, ♔f6  
♜h6

2973



E. Szentgyörgyi, 1929

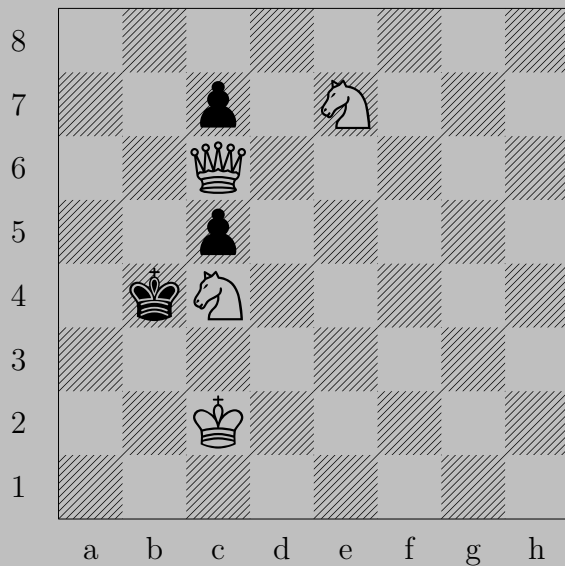
2973



$\text{N}h2$

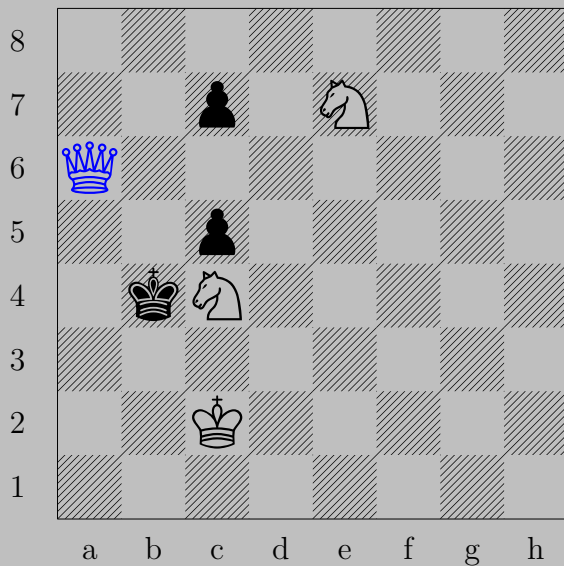
If  $\text{P} \times h2$  or  $\text{P}g2$ ,  $\text{Q}e1$ . If  $\text{K}f2$ ,  $\text{Q}f1$ .

2974



E. Szentgyörgyi, 1929

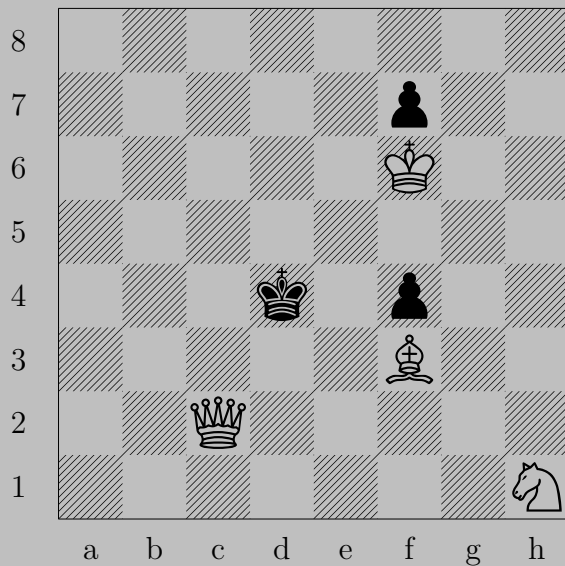
2974



♙a6, ♟c6

♞xc6

2975



E. Szentgyörgyi, 1929

2975

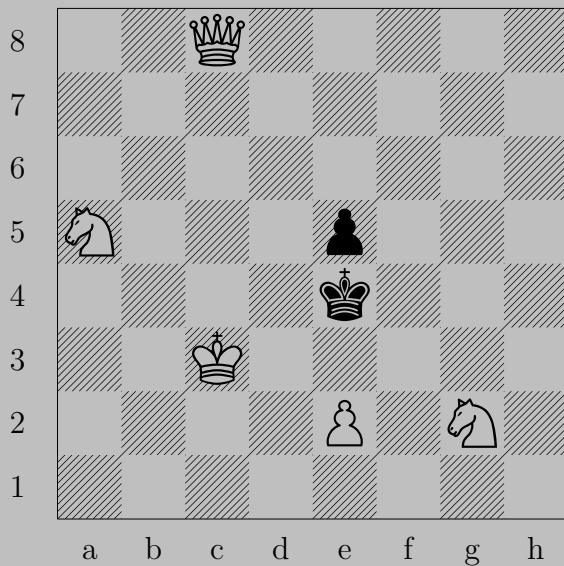


♔xf7, ♔e3

♔c3

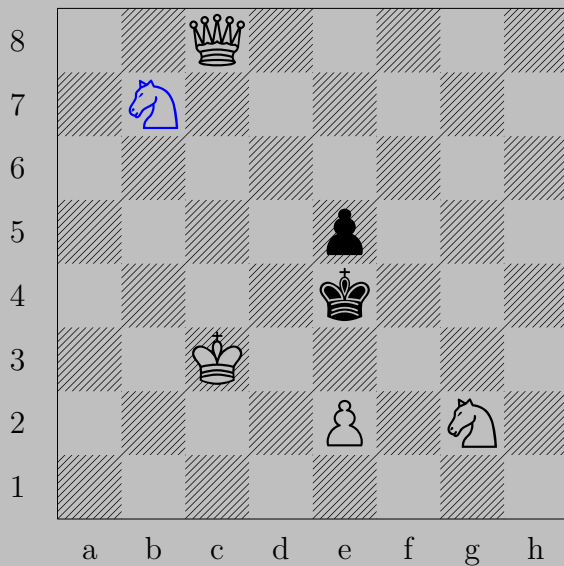


2976



E. Szentgyörgyi, 1929

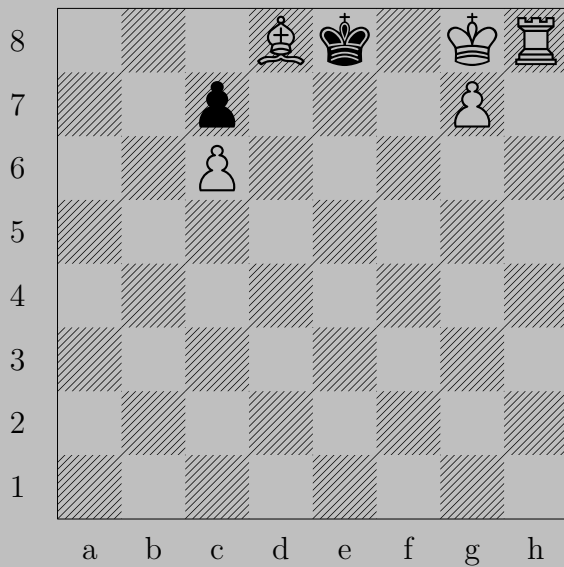
2976



♞b7, ♔d5

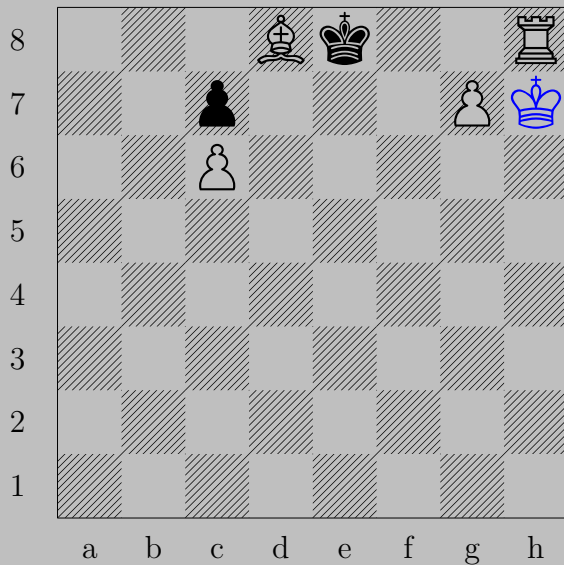
♚c4

2977



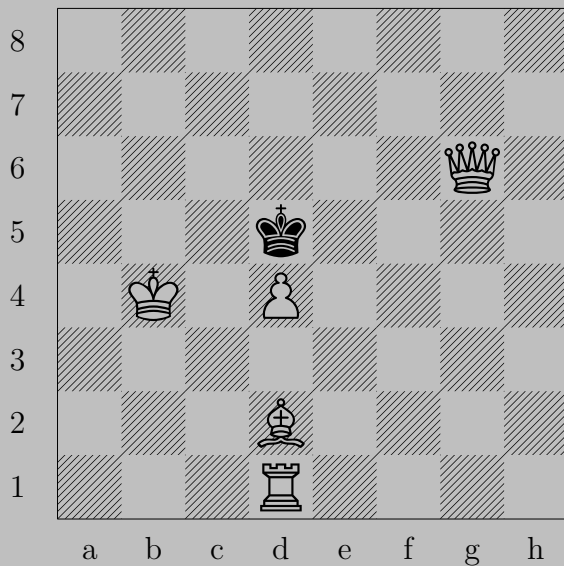
E. Szentgyörgyi, 1929

2977



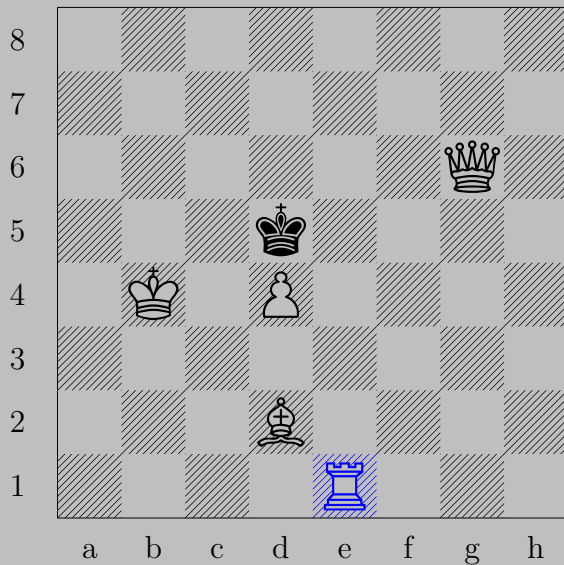
♔h7+, ♔f7  
♕g7(♔)

2978



E. Szentgyörgyi, 1929

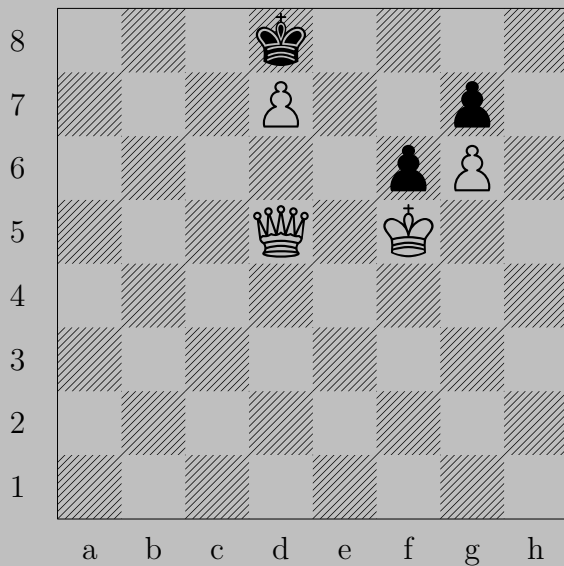
2978



♖e1, ♔xd4

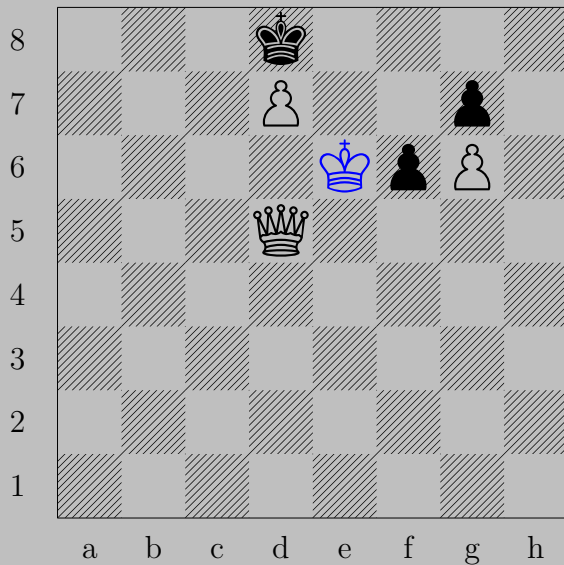
♕d6

2979



E. Szentgyörgyi, 1929

2979

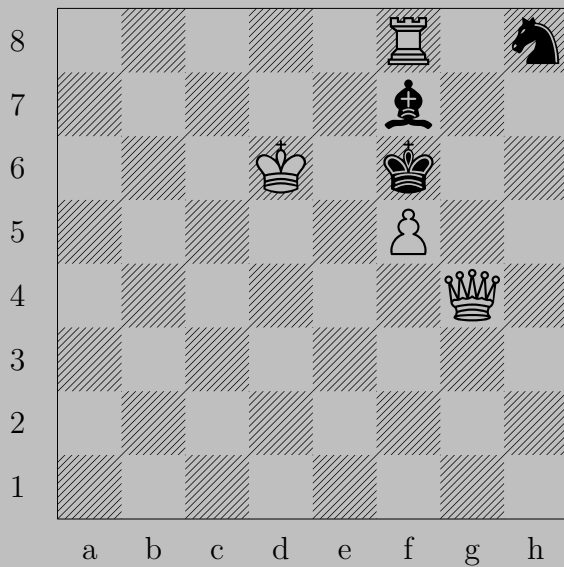


♔e6

If ♔c7, ♕d8(♔). If ♕f5, ♔a5.



2980



E. Szentgyörgyi, 1929

2980



♙h5

If ♘g6, ♙xg6. If ♔g7, ♙xh8.

2981



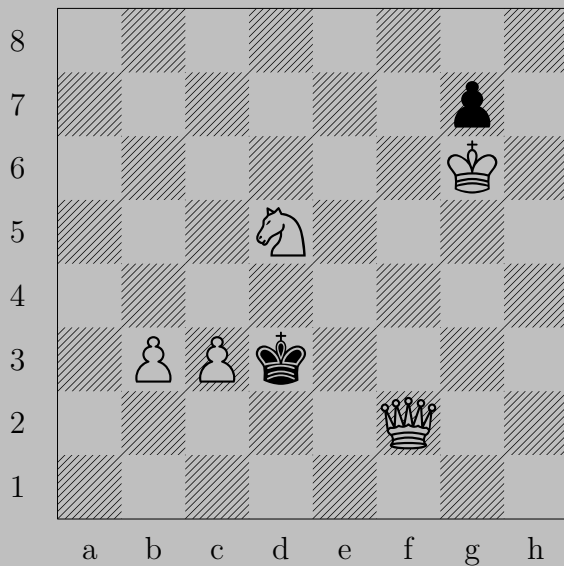
E. Szentgyörgyi, 1929

2981



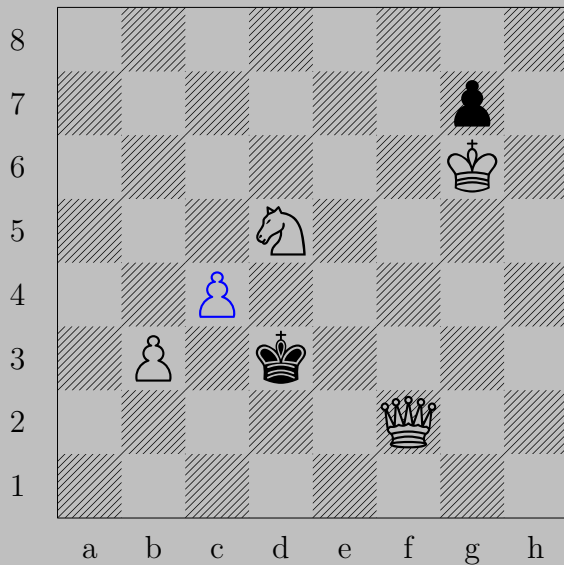
$\text{♖}(a3)a4, \text{♔}\times d3$   
 $\text{♖}f3$

2982



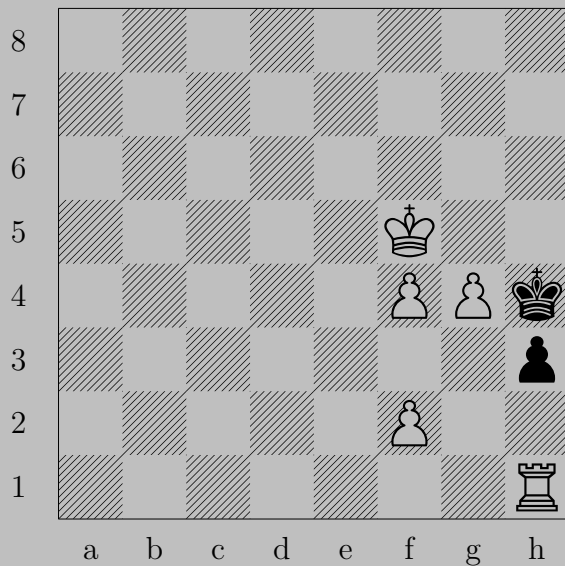
E. Szentgyörgyi, 1929

2982



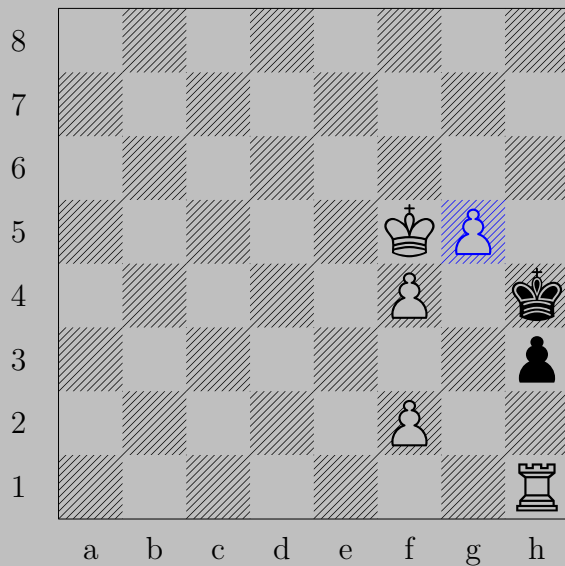
♙c4, ♚e4  
♙e3

2983



E. Szentgyörgyi, 1930

2983



♙g5

If ♙h2, ♖×h2. If ♚h5, ♖×h3.

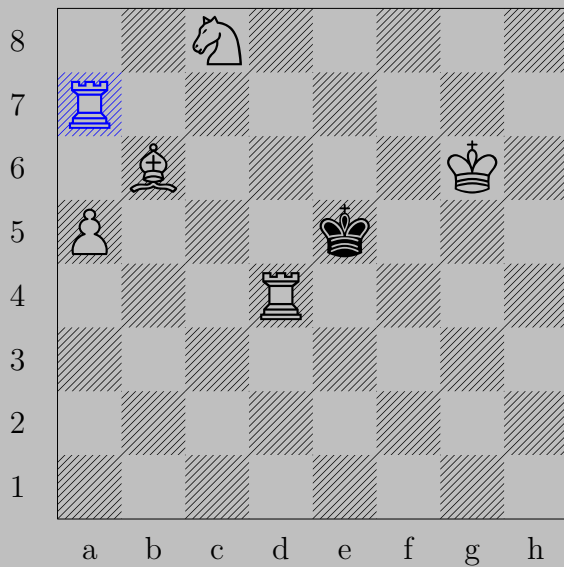


2984



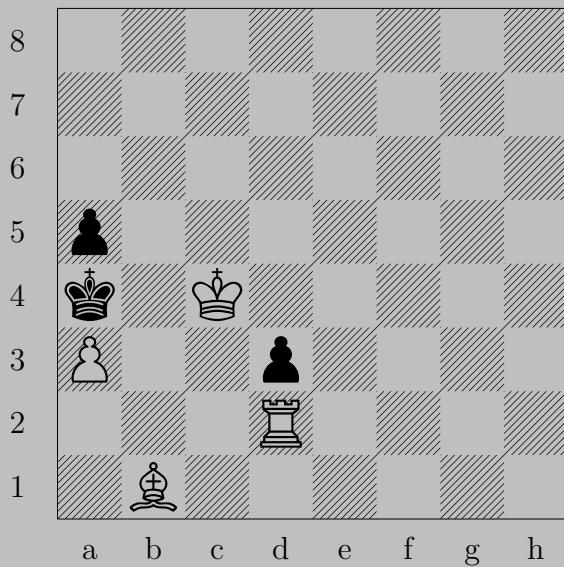
E. Szentgyörgyi, 1930

2984



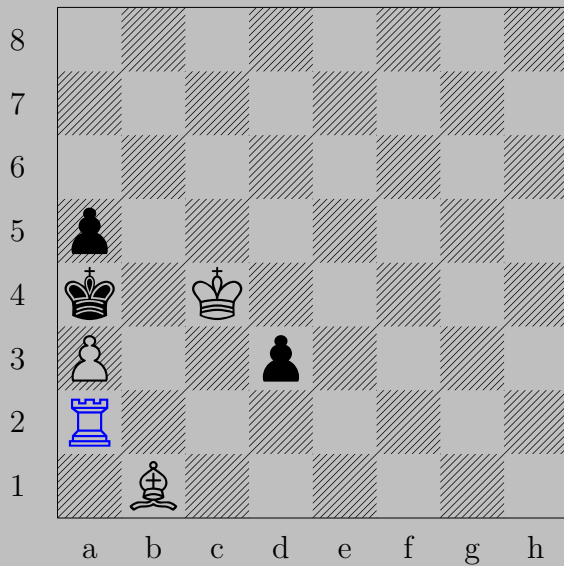
$\text{♖a7, ♔e6}$   
 $\text{♖e7}$

2985



E. Szentgyörgyi, 1930

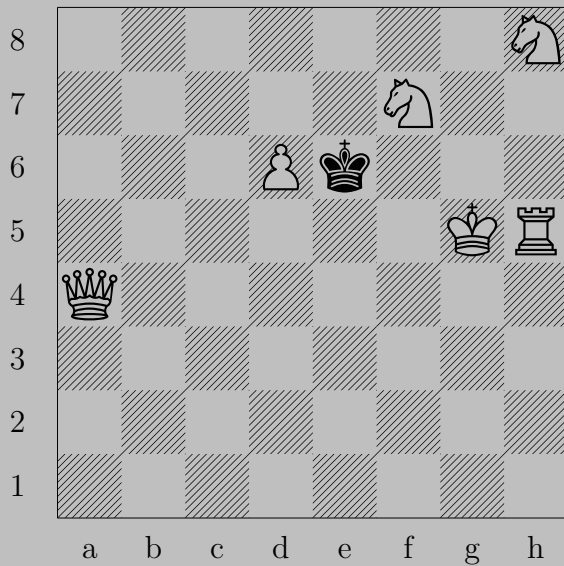
2985



♖a2, ♖d2

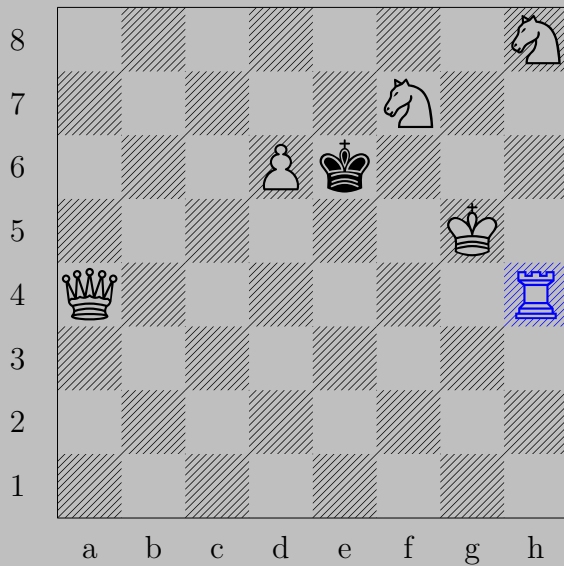
♘c2

2986



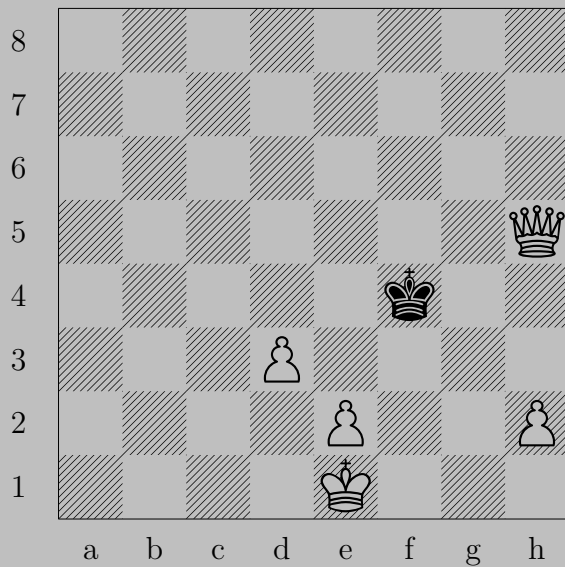
E. Szentgyörgyi, 1930

2986



$\text{♖h4}$ ,  $\text{♔d5}$   
 $\text{♕c4}$

2987



E. Szentgyörgyi, 1930

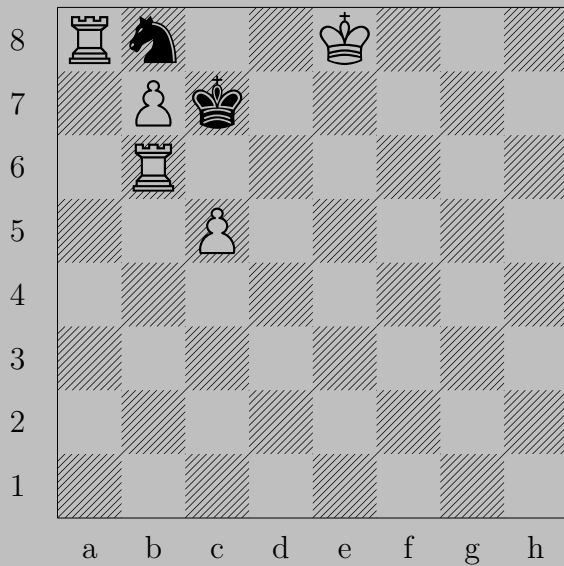
2987



♙d4, ♚e3 or ♚e4  
♛e5

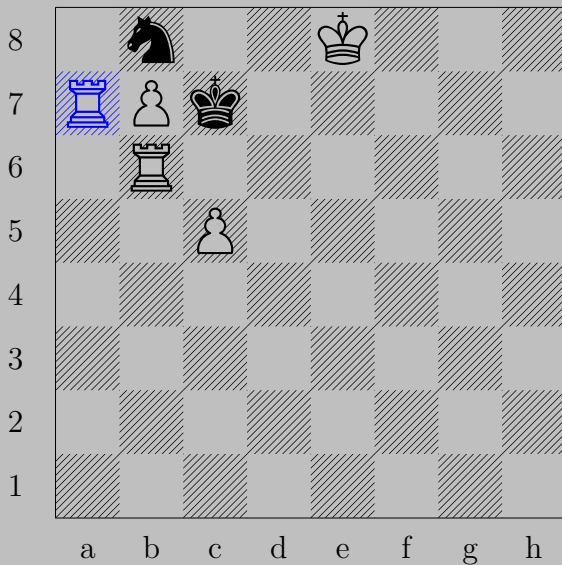


2988



E. Szentgyörgyi, 1930

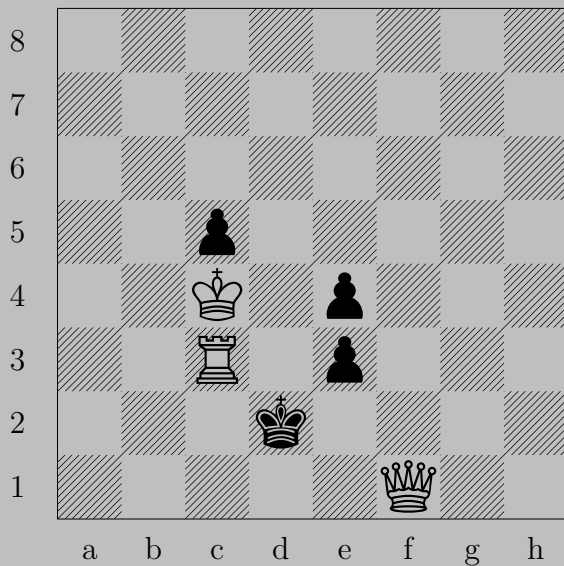
2988



♖a7, ♘a6 or ♘c6 or ♘d7

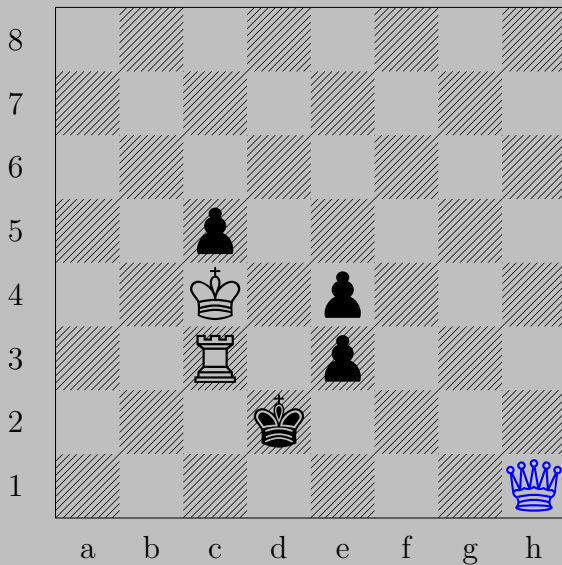
♙b8(♚)

2989



E. Szentgyörgyi, 1930

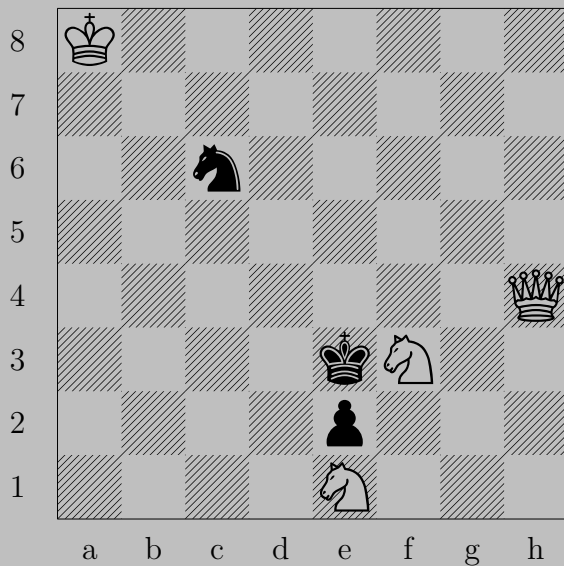
2989



♔h1

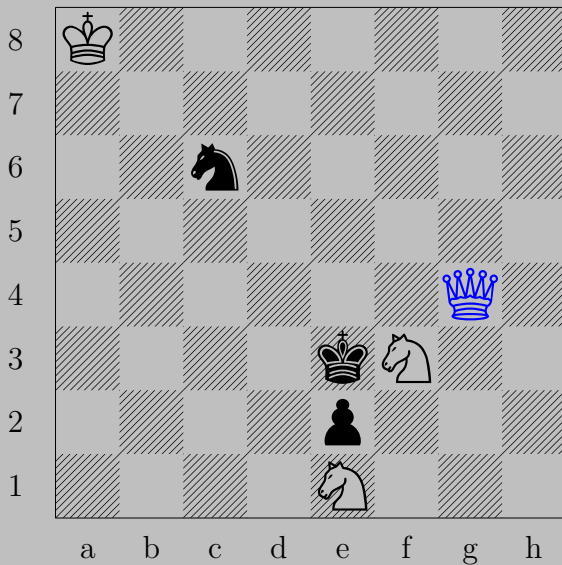
If ♖e2, ♔c1. If ♔e2, ♖c2.

2990



E. Szentgyörgyi, 1930

2990



♔g4

If ♔f2, ♔g1.

If ♞d4, ♔xd4. Otherwise, ♔d4.

2991



E. Szentgyörgyi, 1930

2991



♘d7

If ♙×d5, ♚e6. If ♙d3, ♘b5.

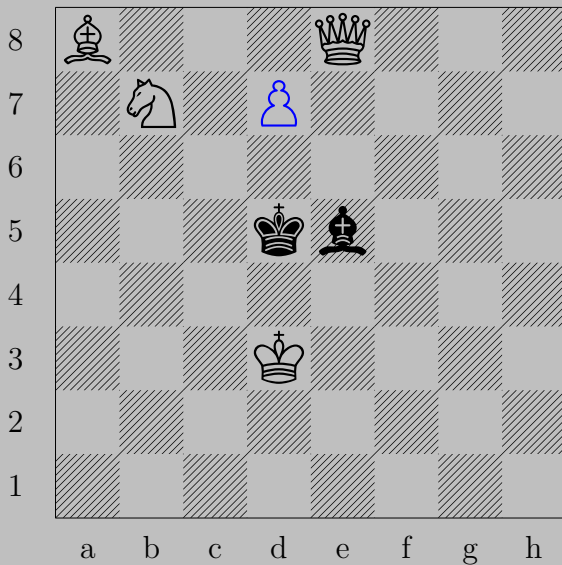


2992



E. Szentgyörgyi, 1930

2992

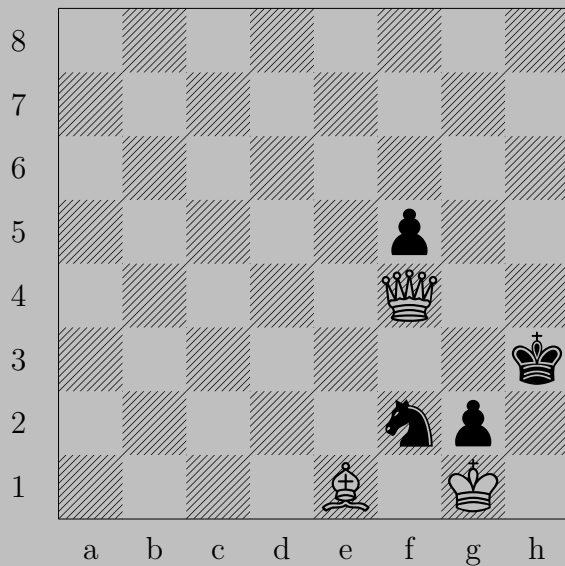


$\text{♞d7}$

If  $\text{♞c6}$ ,  $\text{♞d8}$ ( $\text{♞}$ ).

Otherwise,  $\text{♞e4}$ .


2993



E. Szentgyörgyi, 1930

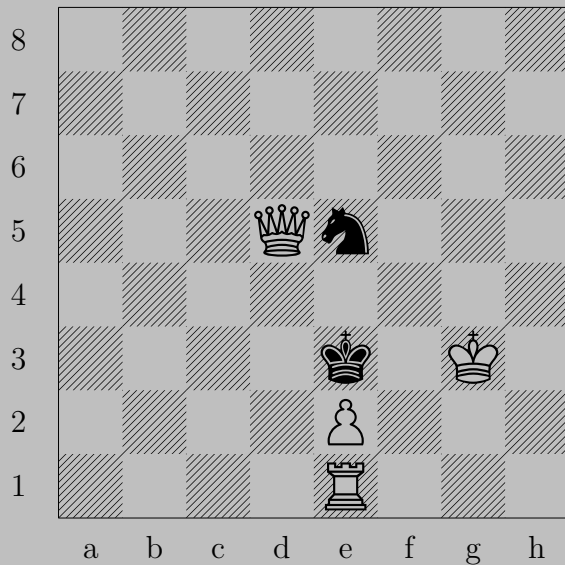
2993



x f5+

If g3 or h4, x f2. If g4, h5.

2994



E. Szentgyörgyi, 1930

2994

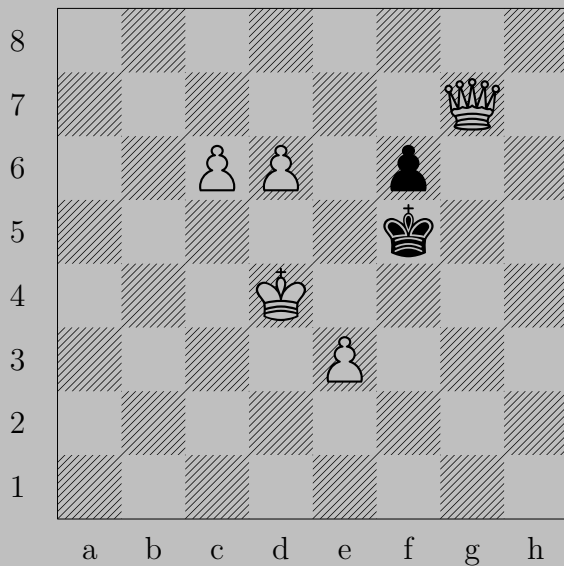


$\text{♖d1}$

If  $\text{♔}\times\text{e2}$ ,  $\text{♕d2}$ .

If  $\text{♞d3}$ ,  $\text{♕}\times\text{d3}$ . Otherwise,  $\text{♕d3}$ .

2995



E. Szentgyörgyi, 1930

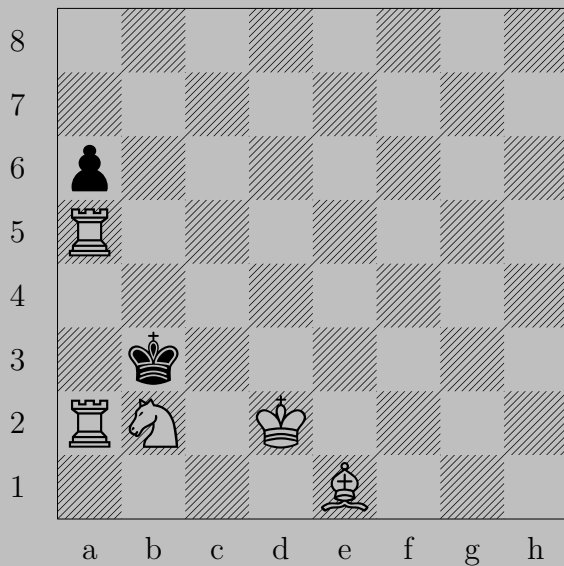
2995



♔g2, ♔e6  
♔d5



2996



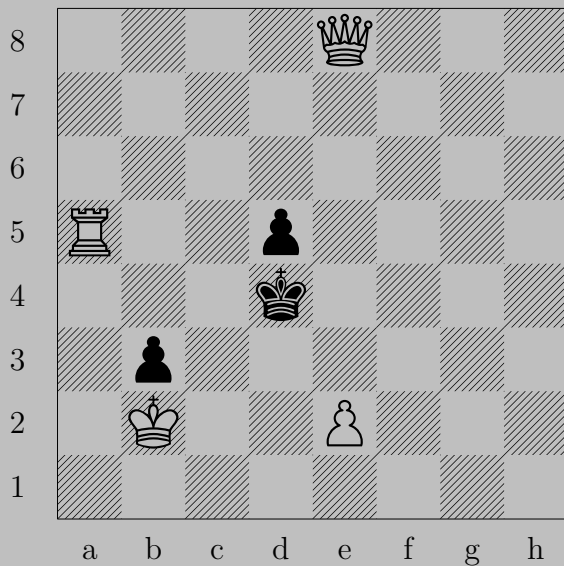
E. Szentgyörgyi, 1930

2996



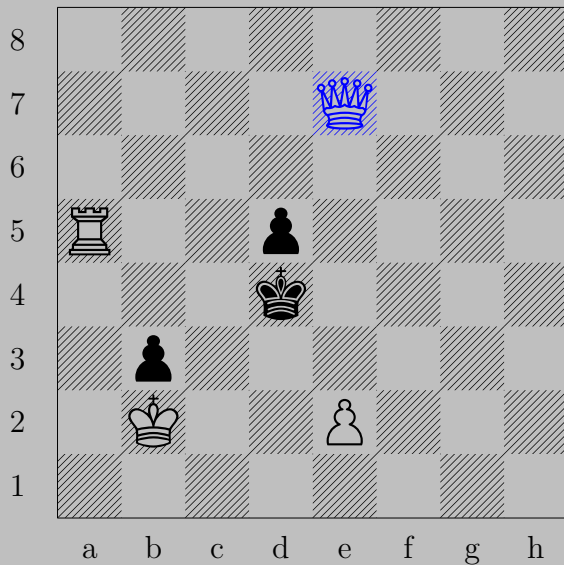
$\text{♖}(a2)a4, \text{♔}\times b2$   
 $\text{♖}b4$

2997



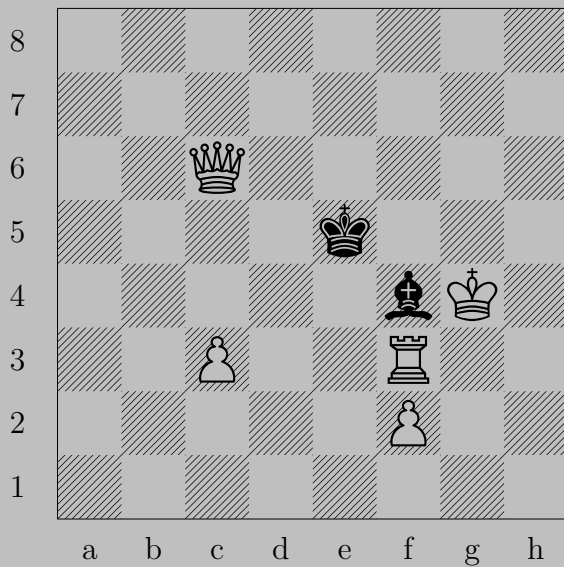
E. Szentgyörgyi, 1930

2997



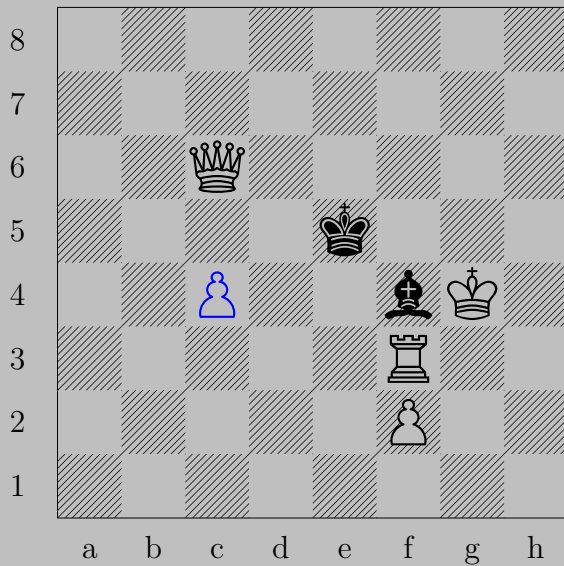
♔e7, ♔c4  
♔c5

2998



E. Szentgyörgyi, 1930

2998



♖c4, anything

♚d5





2999



E. Szentgyörgyi, 1930

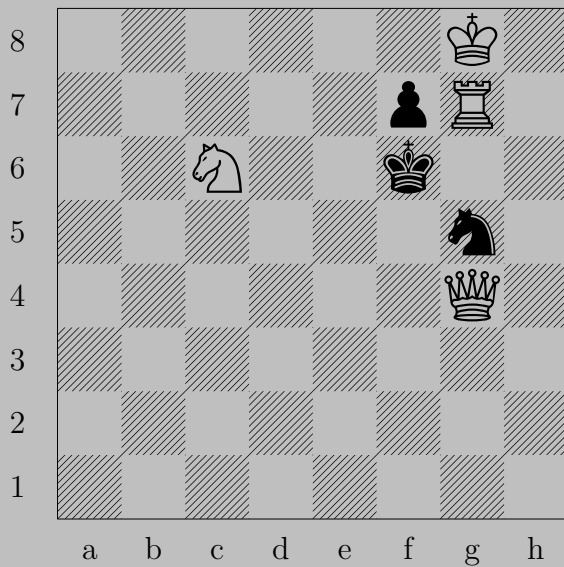
2999



g5, d8 or f8  
g8

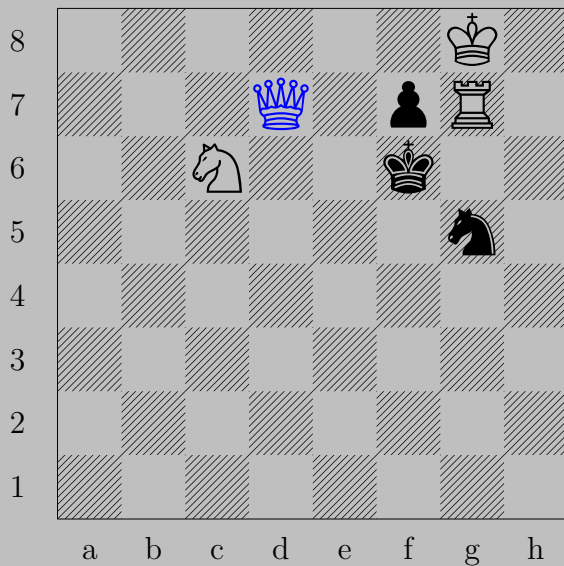


3000



E. Szentgyörgyi, 1930

3000



♔d7, anything

♔xf7