

# Chess Puzzles

2801-2900

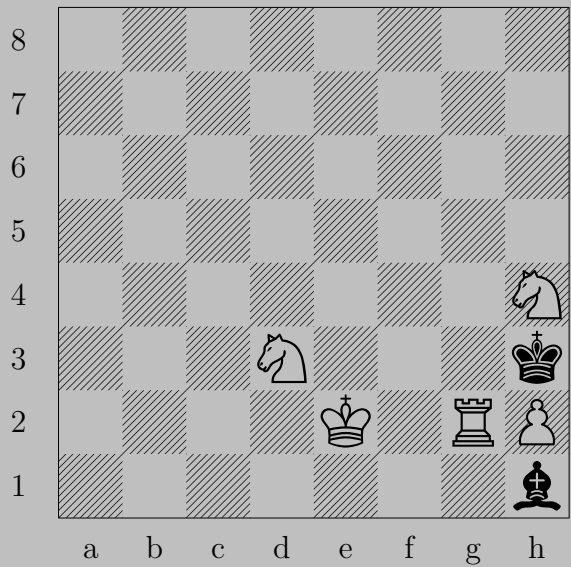
Mate in Two  
White to Move

László Polgár

## Links

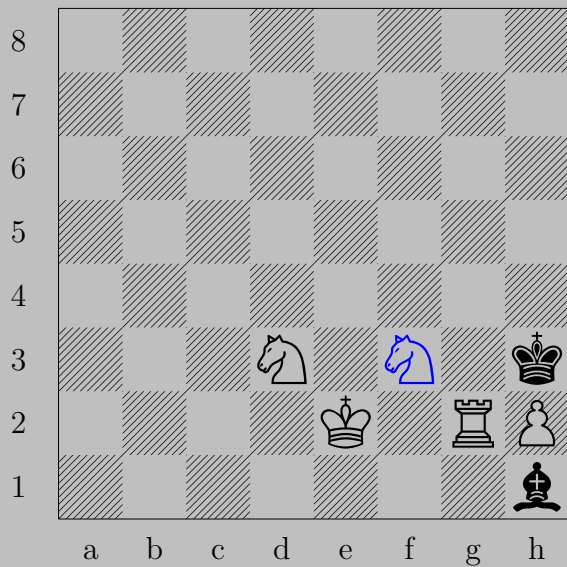
<a href="#">2801</a>	<a href="#">2802</a>	<a href="#">2803</a>	<a href="#">2804</a>	<a href="#">2805</a>	<a href="#">2806</a>	<a href="#">2807</a>	<a href="#">2808</a>	<a href="#">2809</a>	<a href="#">2810</a>
<a href="#">2811</a>	<a href="#">2812</a>	<a href="#">2813</a>	<a href="#">2814</a>	<a href="#">2815</a>	<a href="#">2816</a>	<a href="#">2817</a>	<a href="#">2818</a>	<a href="#">2819</a>	<a href="#">2820</a>
<a href="#">2821</a>	<a href="#">2822</a>	<a href="#">2823</a>	<a href="#">2824</a>	<a href="#">2825</a>	<a href="#">2826</a>	<a href="#">2827</a>	<a href="#">2828</a>	<a href="#">2829</a>	<a href="#">2830</a>
<a href="#">2831</a>	<a href="#">2832</a>	<a href="#">2833</a>	<a href="#">2834</a>	<a href="#">2835</a>	<a href="#">2836</a>	<a href="#">2837</a>	<a href="#">2838</a>	<a href="#">2839</a>	<a href="#">2840</a>
<a href="#">2841</a>	<a href="#">2842</a>	<a href="#">2843</a>	<a href="#">2844</a>	<a href="#">2845</a>	<a href="#">2846</a>	<a href="#">2847</a>	<a href="#">2848</a>	<a href="#">2849</a>	<a href="#">2850</a>
<a href="#">2851</a>	<a href="#">2852</a>	<a href="#">2853</a>	<a href="#">2854</a>	<a href="#">2855</a>	<a href="#">2856</a>	<a href="#">2857</a>	<a href="#">2858</a>	<a href="#">2859</a>	<a href="#">2860</a>
<a href="#">2861</a>	<a href="#">2862</a>	<a href="#">2863</a>	<a href="#">2864</a>	<a href="#">2865</a>	<a href="#">2866</a>	<a href="#">2867</a>	<a href="#">2868</a>	<a href="#">2869</a>	<a href="#">2870</a>
<a href="#">2871</a>	<a href="#">2872</a>	<a href="#">2873</a>	<a href="#">2874</a>	<a href="#">2875</a>	<a href="#">2876</a>	<a href="#">2877</a>	<a href="#">2878</a>	<a href="#">2879</a>	<a href="#">2880</a>
<a href="#">2881</a>	<a href="#">2882</a>	<a href="#">2883</a>	<a href="#">2884</a>	<a href="#">2885</a>	<a href="#">2886</a>	<a href="#">2887</a>	<a href="#">2888</a>	<a href="#">2889</a>	<a href="#">2890</a>
<a href="#">2891</a>	<a href="#">2892</a>	<a href="#">2893</a>	<a href="#">2894</a>	<a href="#">2895</a>	<a href="#">2896</a>	<a href="#">2897</a>	<a href="#">2898</a>	<a href="#">2899</a>	<a href="#">2900</a>

2801



O. Shaligan, 1985

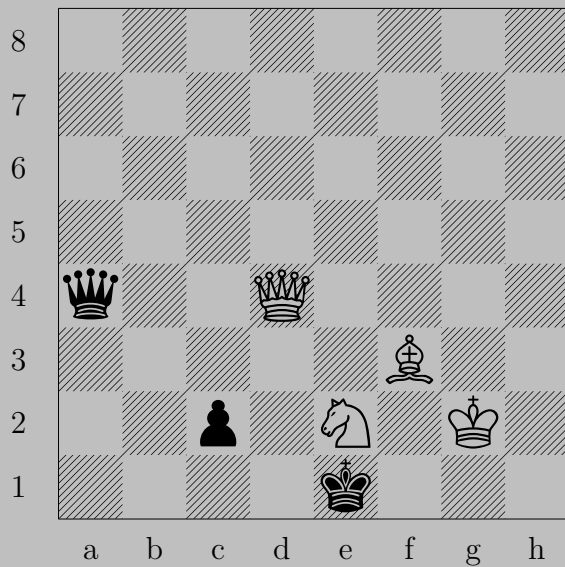
2801



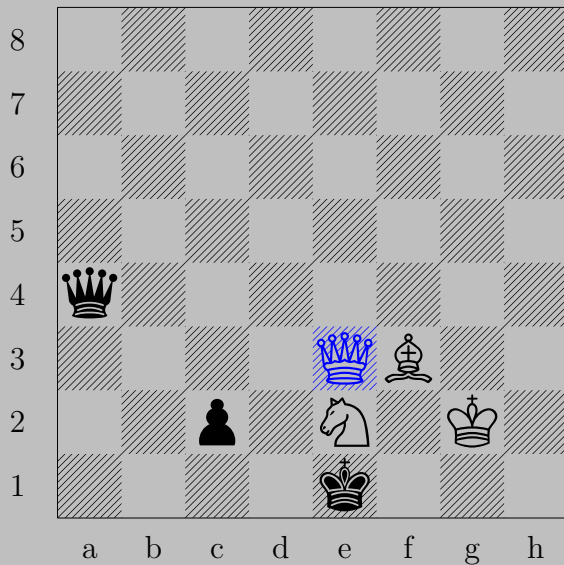
$\text{Nf3}, \text{Kxg2}$

$\text{Nf2}$

2802



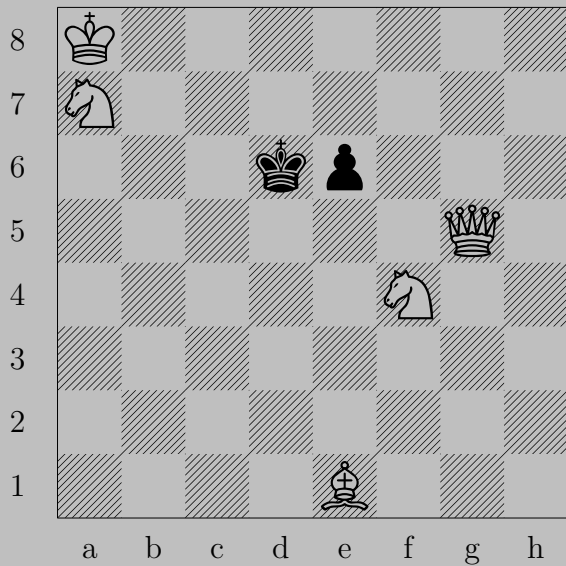
J. Shanahan, 1993



♙e3

If ♙g4+, ♞g3. If ♙a3, ♞c3. If ♙f4, ♞xf4. If ♙d4, ♞xd4. If ♖c1, ♞xc1.  
 If ♙a1 or ♙d7, ♞c1. Otherwise, ♙c1.

2803



S. Sheday, 1969

2803

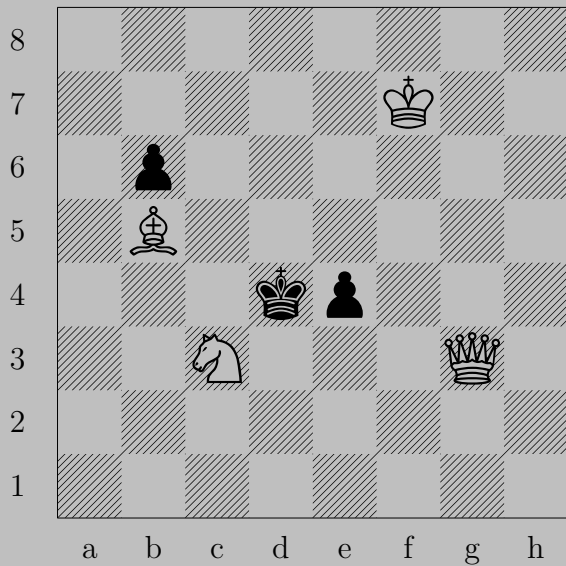


$\text{♞h4}$

If  $\text{♞c7}$ ,  $\text{♞d8}$ . If  $\text{♞d7}$  or  $\text{♞e5}$ ,  $\text{♞e7}$ .

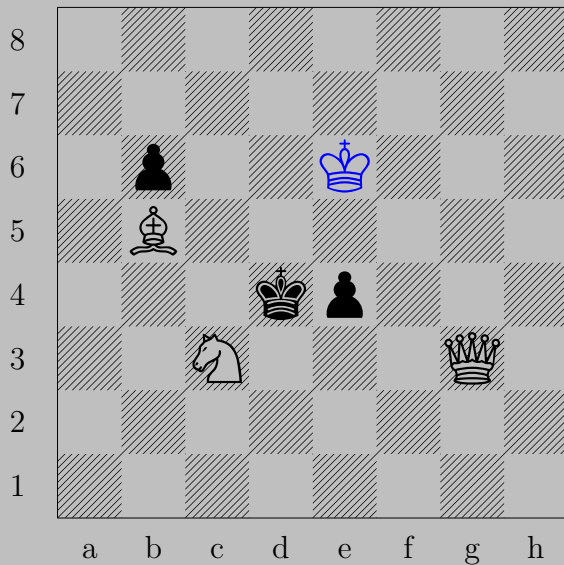


2804



S. Sheday, 1969

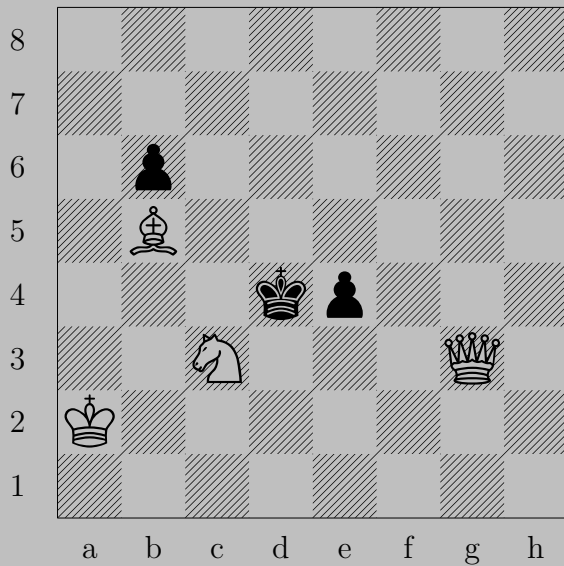
2804



♔e6

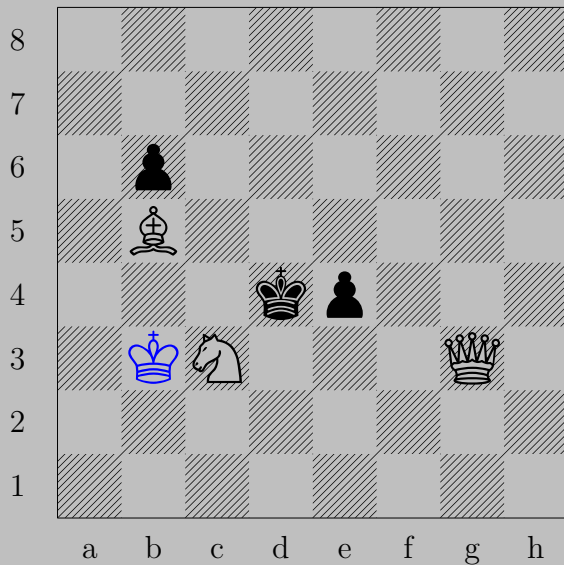
If ♔c5, ♔d6. If ♖e3, ♔e5.

2805



S. Sheday, 1969

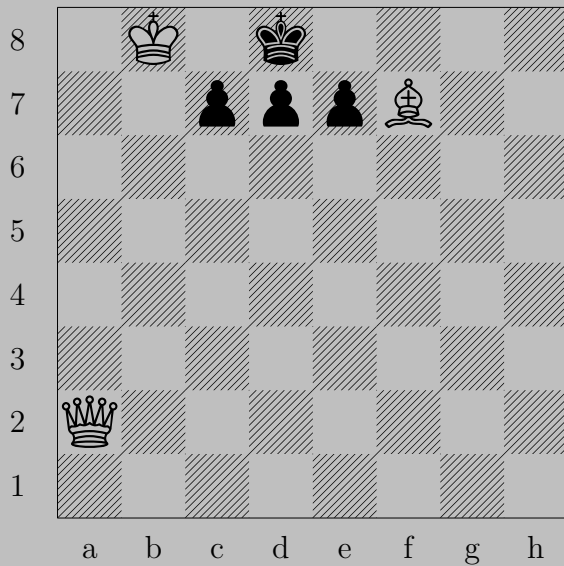
2805



♔b3

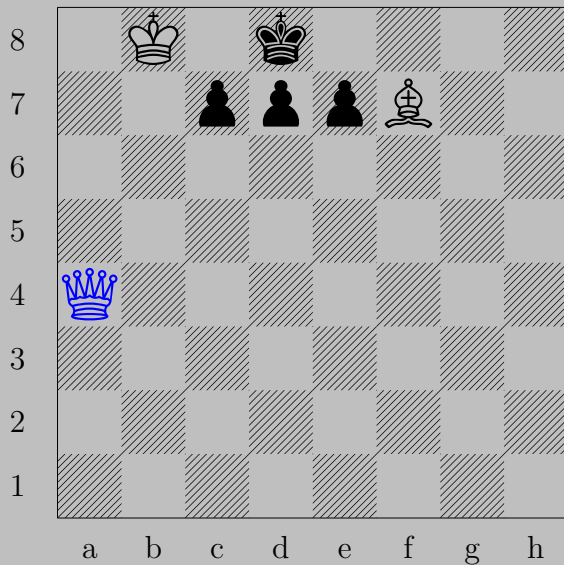
If ♙c5, ♚e5. If ♜e3, ♚d6.

2806



S. Sheday, 1979

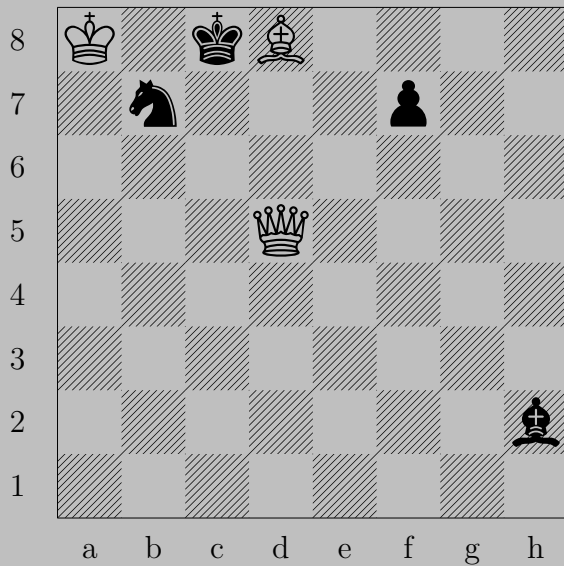
2806



$\text{♙a4}$

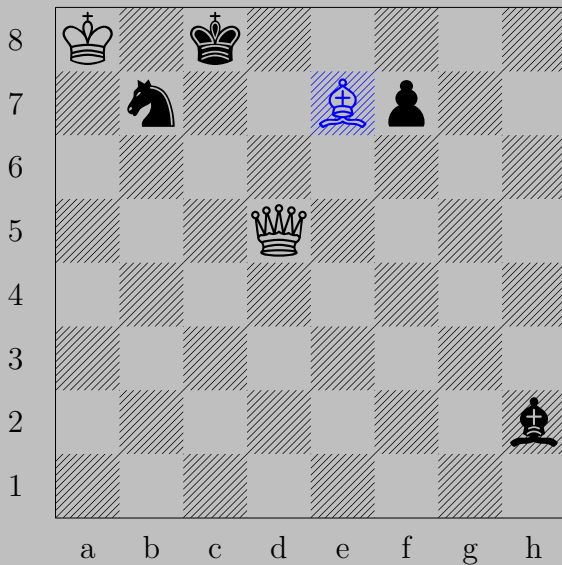
If  $\text{♟c6}$  or  $\text{♟c5}$ ,  $\text{♙a5}$ . If  $\text{♟d6}$  or  $\text{♟d5}$ ,  $\text{♙e8}$ . If  $\text{♟e6}$  or  $\text{♟e5}$ ,  $\text{♙h4}$ .

2807



A. Sheynin, 1945

2807



$\text{♗e7}$

If  $\text{♞d6}$ ,  $\text{♙c6}$ . If  $\text{♞a5}$  or  $\text{♞c5}$ ,  $\text{♙d7}$ . If  $\text{♞d7}$ ,  $\text{♙xd7}$ .

Otherwise,  $\text{♙xb7}$ .



2808



W. A. Shinkman, 1902

2808



♔d2

If ♕d4, ♖b1. If ♔c2, ♕g6.

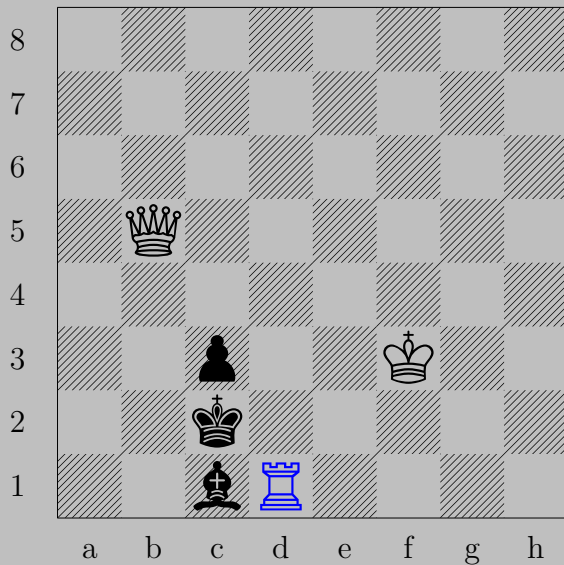
Otherwise, ♖xd5.

2809



W. A. Shinkman, 1902

2809

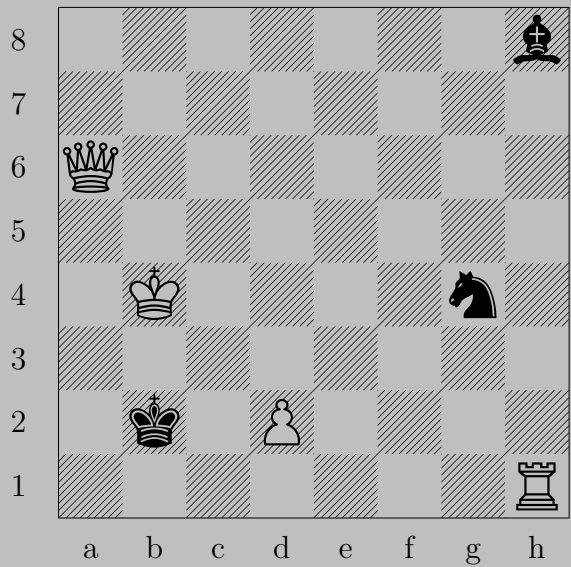


$\text{Rd1}$

If  $\text{K}\times\text{d1}$ ,  $\text{Qe2}$ . If  $\text{Bb2}$ ,  $\text{Qa4}$ .

Otherwise,  $\text{Qb1}$ .

2810



W. A. Shinkman, 1915

2810

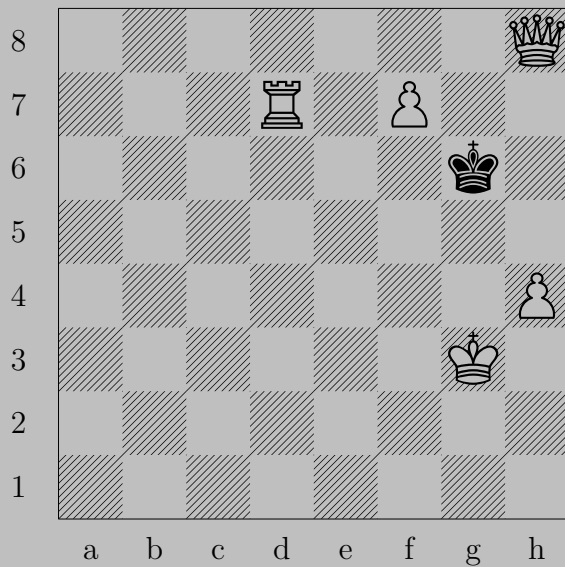


$\text{♔e2}$

If  $\text{♕c3+}$ ,  $\text{♖xc3}$ . If  $\text{♘e3}$ ,  $\text{♖xe3}$ . If  $\text{♙a2}$ ,  $\text{♖d4}$ .

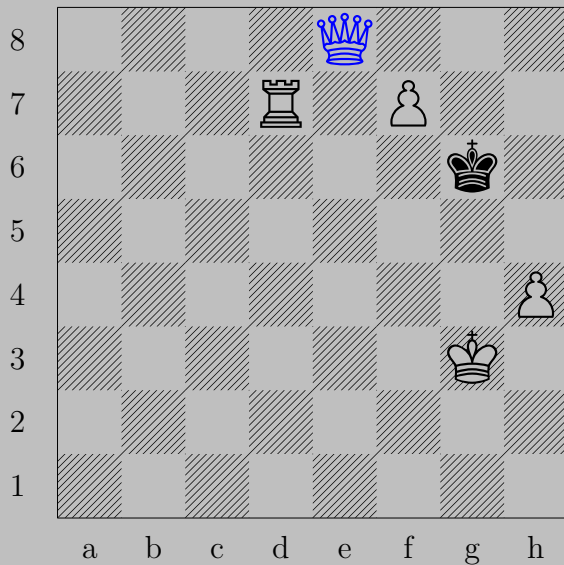
Otherwise,  $\text{♖d3}$ .

2811



W. A. Shinkman, 1902

2811

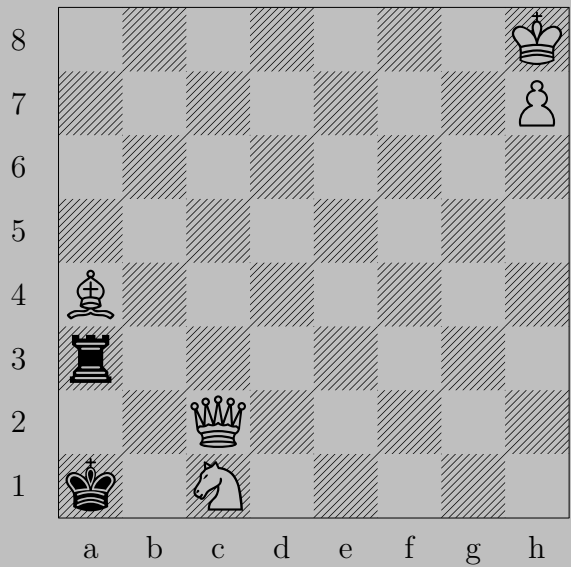


♔e8, anything

♕f8(♔)

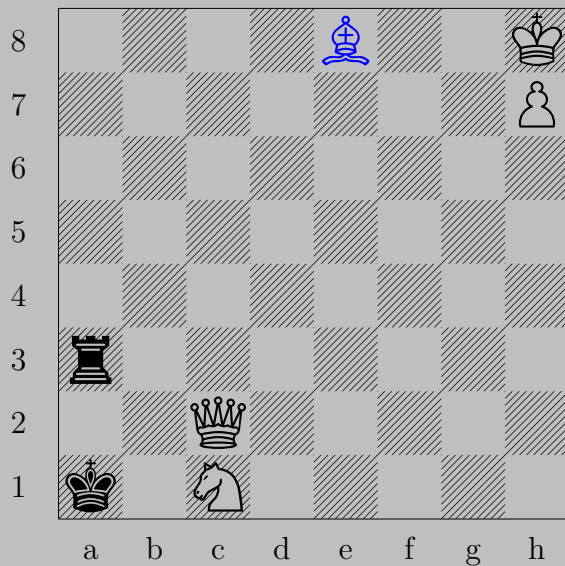


2812



W. A. Shinkman, 1903

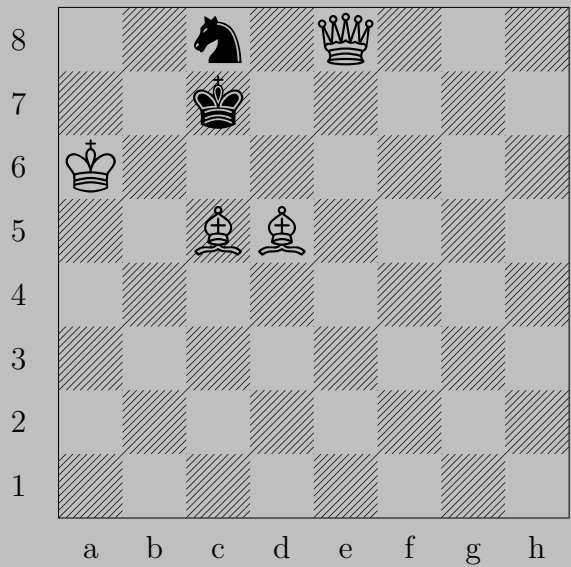
2812



e8

If a4-a8, b3. If b3-h3, a2.

2813



W. A. Shinkman, 1919

2813



♗d4

If ♔d6, ♑d8. If ♞d6, ♗b6.

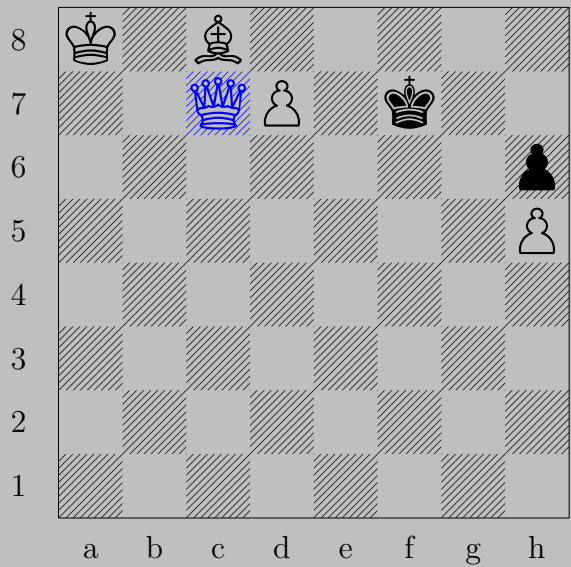
Otherwise, ♗e5.

2814



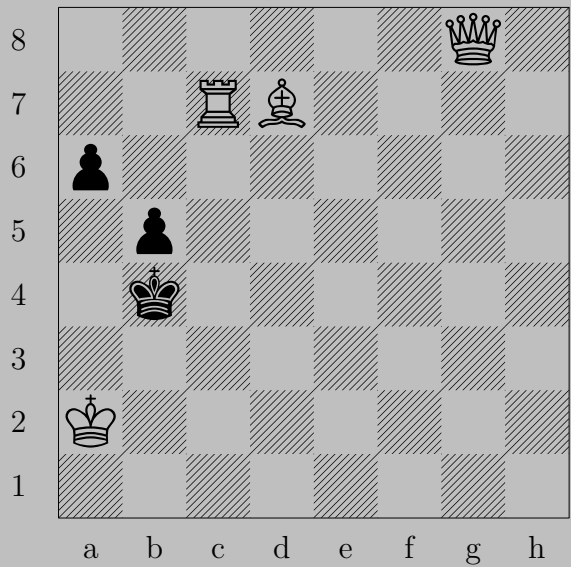
W. A. Shinkman, 1874

2814



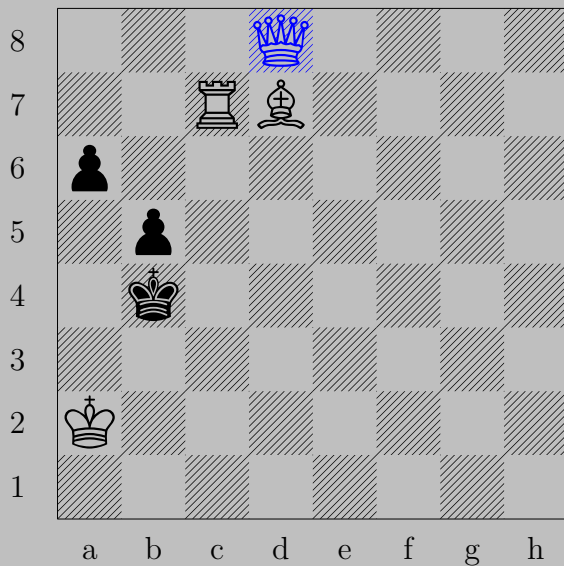
♔c7, anything  
♕d8(♔)

2815



W. A. Shinkman, 1903

2815

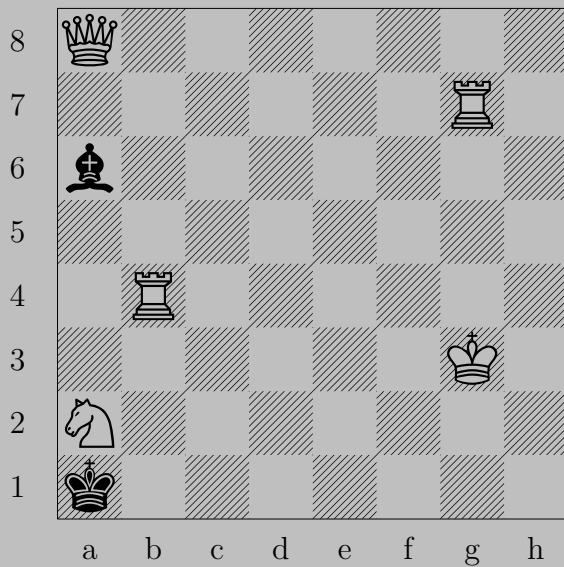


♙d8

If ♖a5, ♙b4. If ♔a4 or ♔a5, ♖b4.

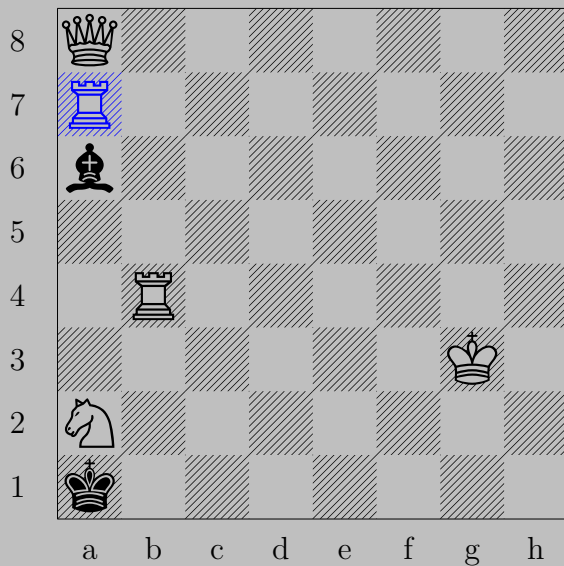


2816



W. A. Shinkman, 1874

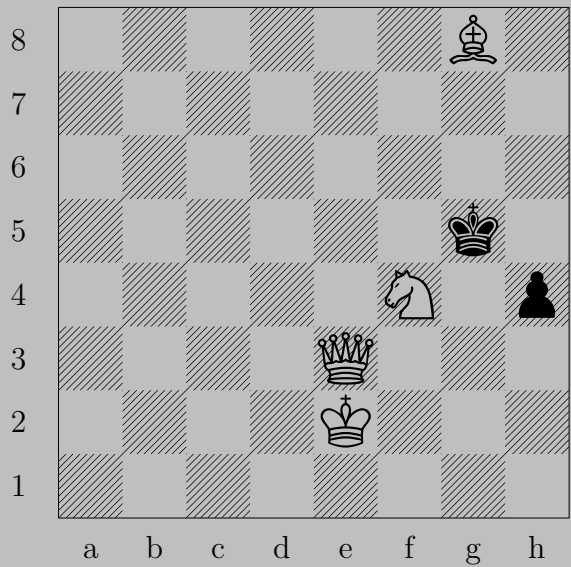
2816



♖a7

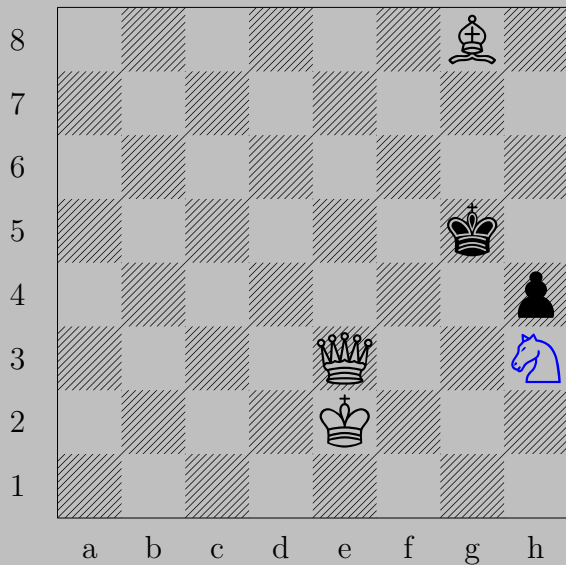
If ♔xa2, ♖xa6. If ♗b5-f1, ♔h8.

2817



D. J. Shire, 1974

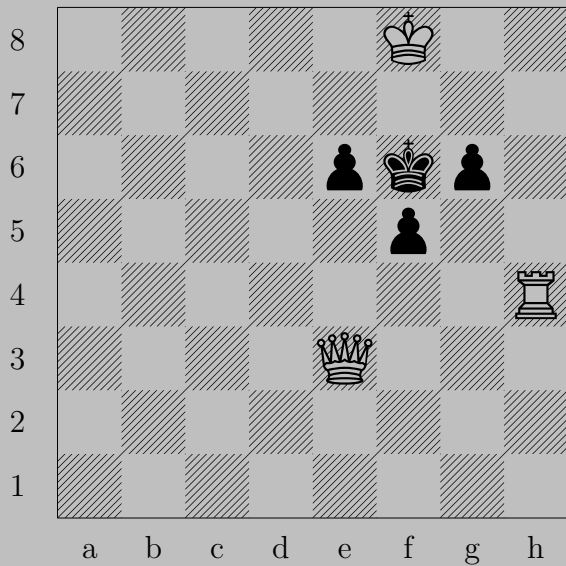
2817



♞h3+

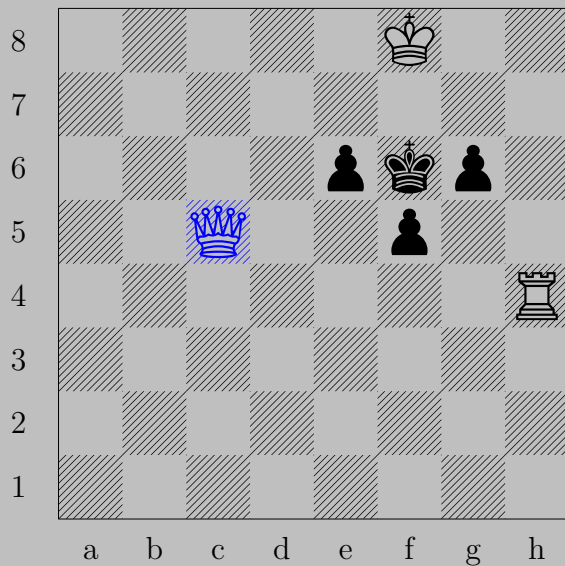
If ♙f6 or ♙g6 or ♙h5, ♚g5. If ♙f5, ♚e6. If ♙g4, ♚f3.

2818



A. Shuryakov, 1982

2818



c5

If g5 or e5, e7. If g5, h6. If f4, x4.

2819



T. Siers, 1930



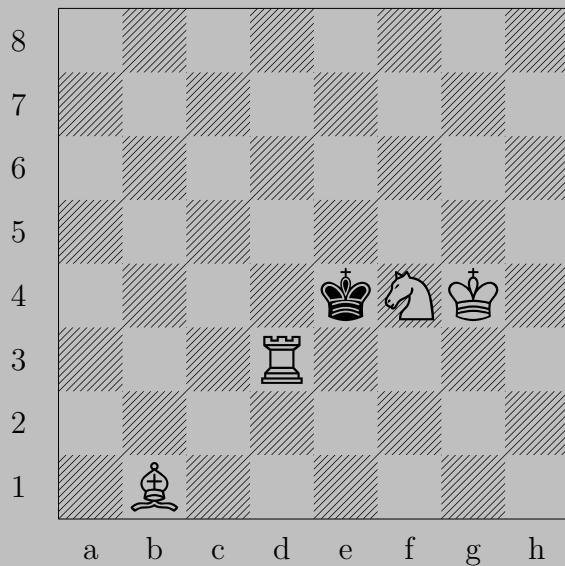
♔g4

If ♘c6, ♖b5. If ♘e6, ♗f5. If ♙c5 or ♙e5, ♗e6. If ♙e5, ♗c4.

Otherwise, ♗d4.



2820



P. Siklósi, 1973

2820



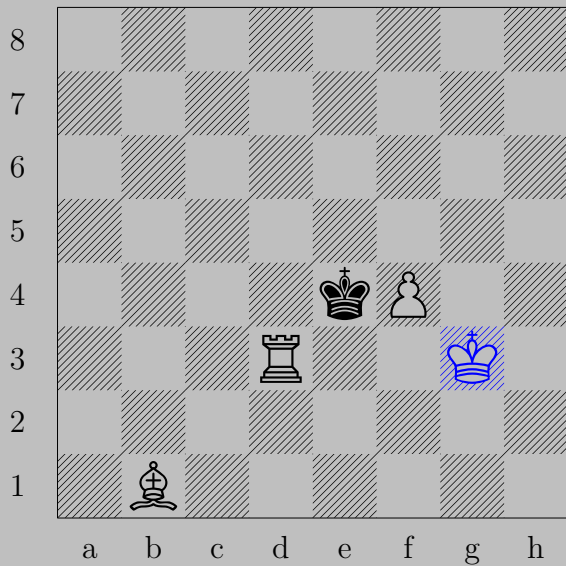
♔g5, ♔e5  
♖d5

2821



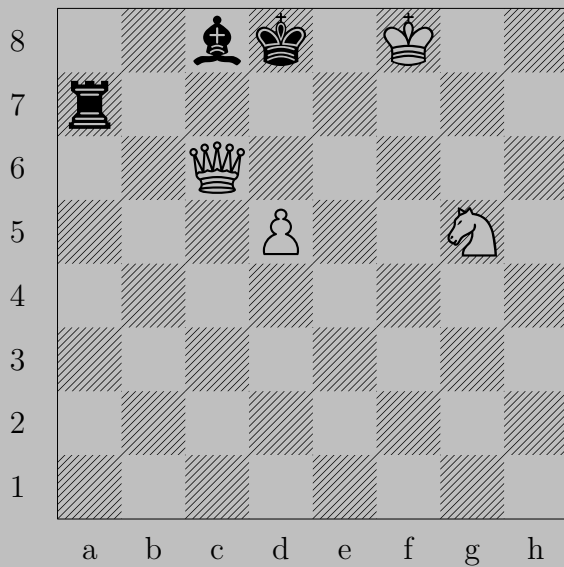
P. Siklósi, 1973

2821

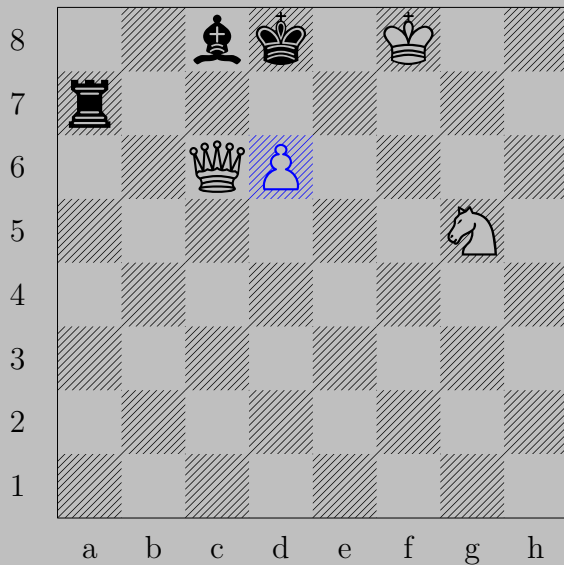


♔g3, ♔f5  
♖d6

2822



P. Siklósi, 1973



♙d6

If ♔d7, ♘f7. If ♖d7, ♘e6. If ♗e7, ♙xe7. If ♗f7+, ♘xf7.

Otherwise, ♕e8.

2823



P. Siklósi, 1955/56

2823

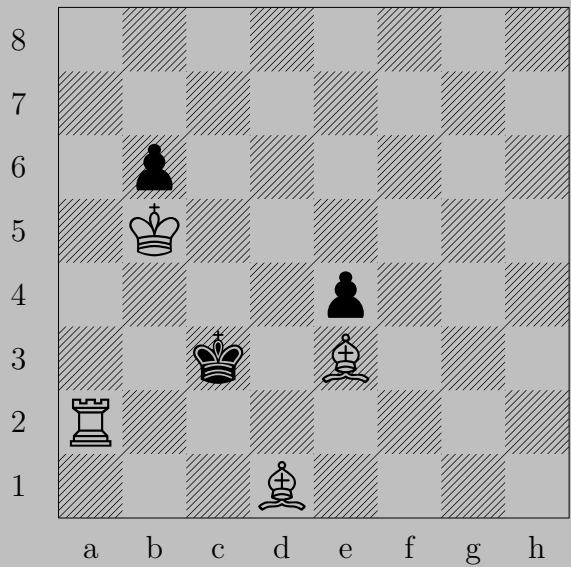


$\text{Nf3}$

If  $\text{Qxf3}$ ,  $\text{Nd5}$ . If  $\text{Qd3}$  or  $\text{Qf1}$ ,  $\text{Nc4}$ . If  $\text{Qd1}$ ,  $\text{Nb3}$ .

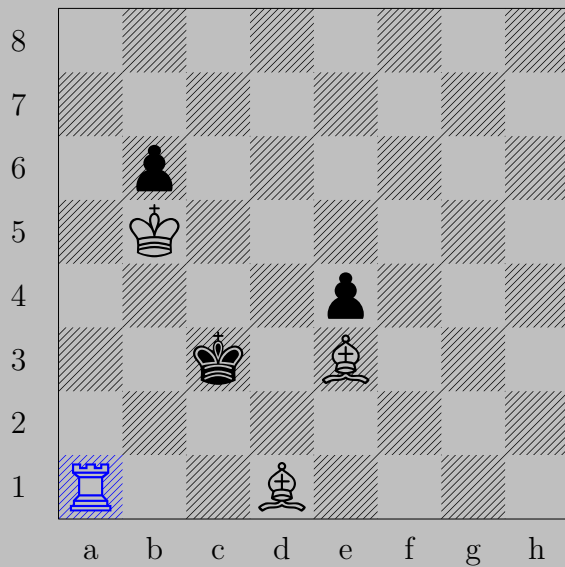


2824



F. A. Singer, 1985

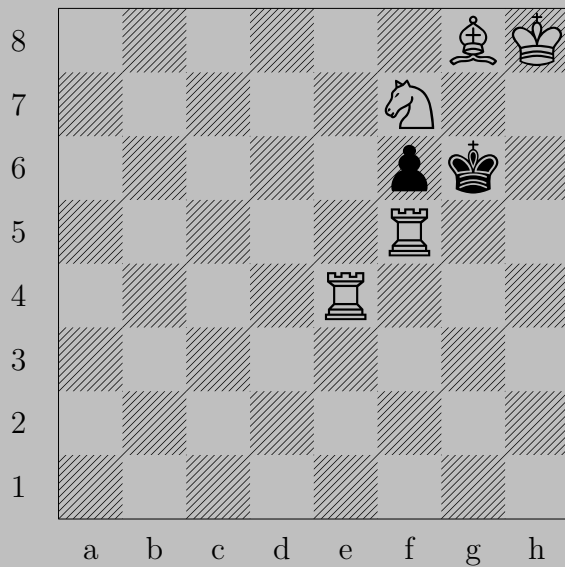
2824



$\text{♖a1}$

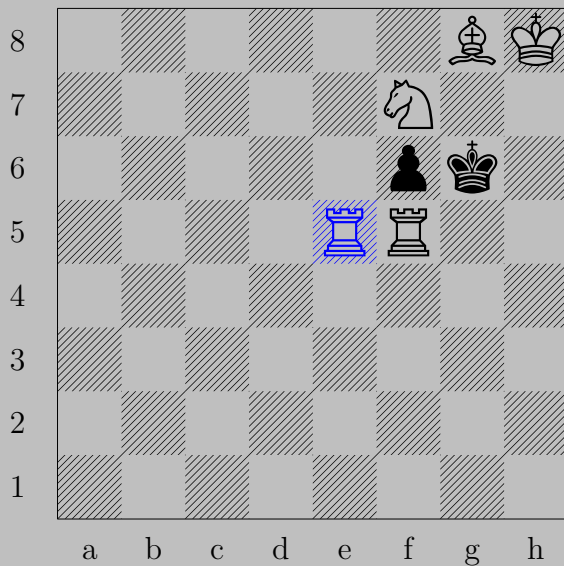
If  $\text{♕b2}$ ,  $\text{♗d4}$ . If  $\text{♕d3}$ ,  $\text{♖a3}$ .

2825



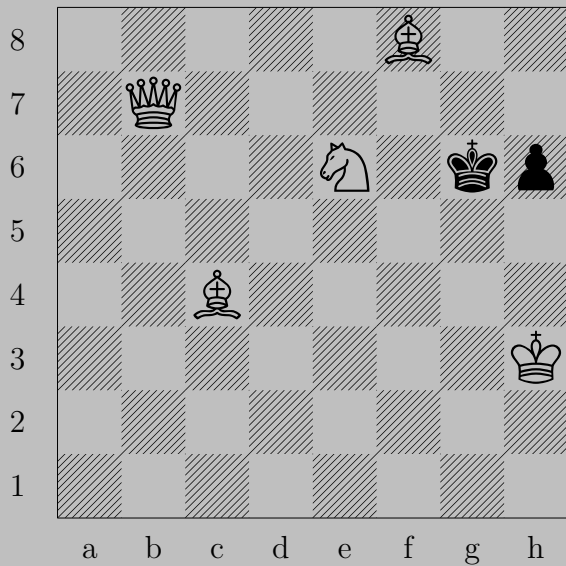
F. A. Singer, 1985

2825



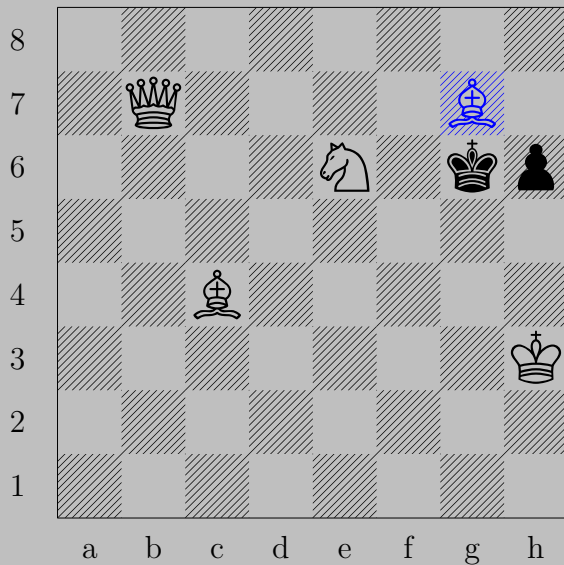
$\text{♖}(e4)e5, \text{♜}\times e5$   
 $\text{♔}h7$

2826



G. J. Slater, 1886

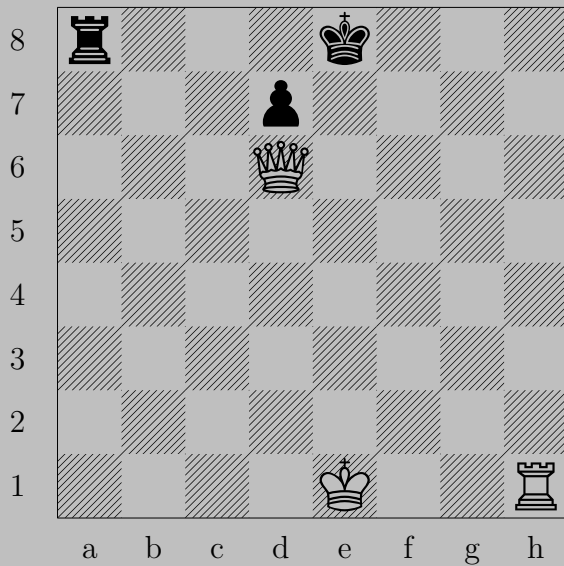
2826



$\text{♙g7}$

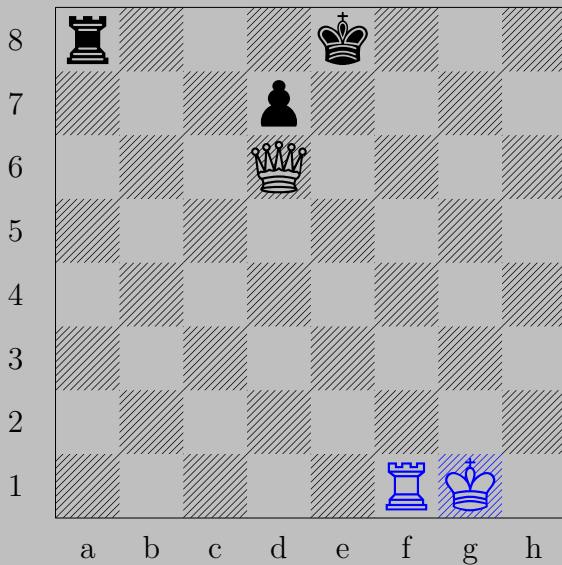
If  $\text{♜h5}$ ,  $\text{♞d3}$ . If  $\text{♚f5}$ ,  $\text{♞b1}$ . If  $\text{♚h5}$ ,  $\text{♞f7}$ . If  $\text{♚h7}$ ,  $\text{♞f8}$ .

2827



V. Sljuter, 1926

2827



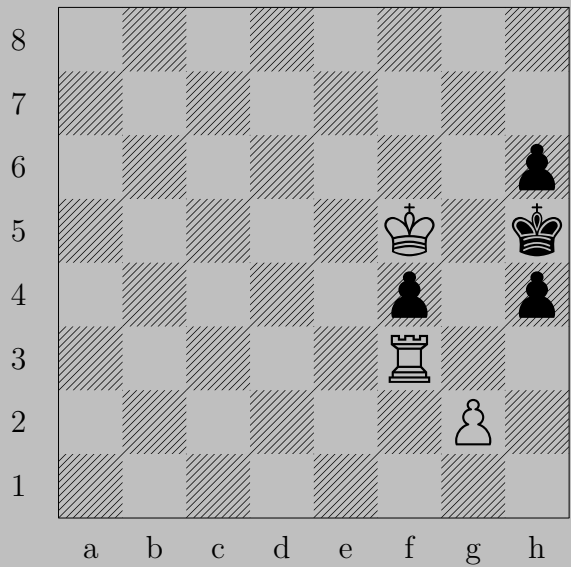
O-O

If ♖a1, ♔f8. Otherwise ♖f8.

(Note: Black had to move the ♖ or ♔ last turn.)

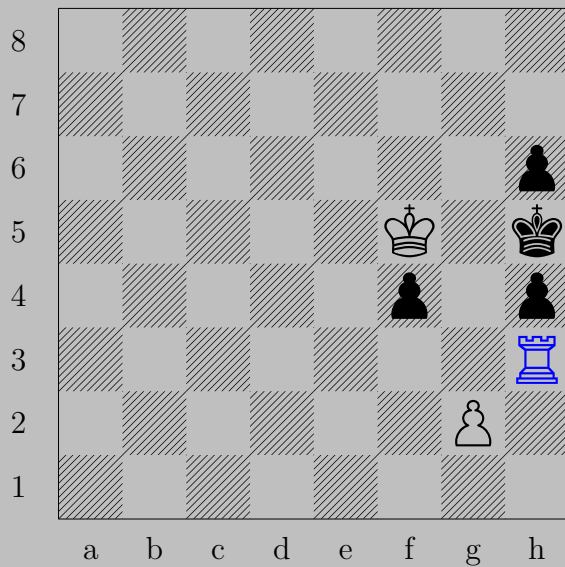


2828



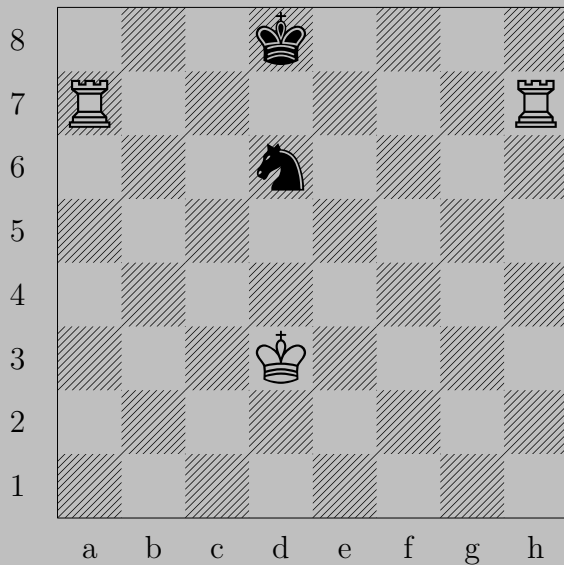
R. Smook, 1985

2828



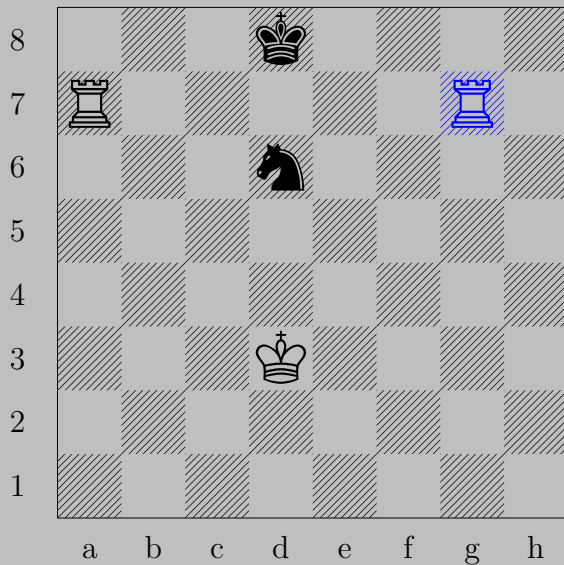
♖h3, ♙f3  
♙g4

2829



Bonus Socius, Thirteenth Century

2829

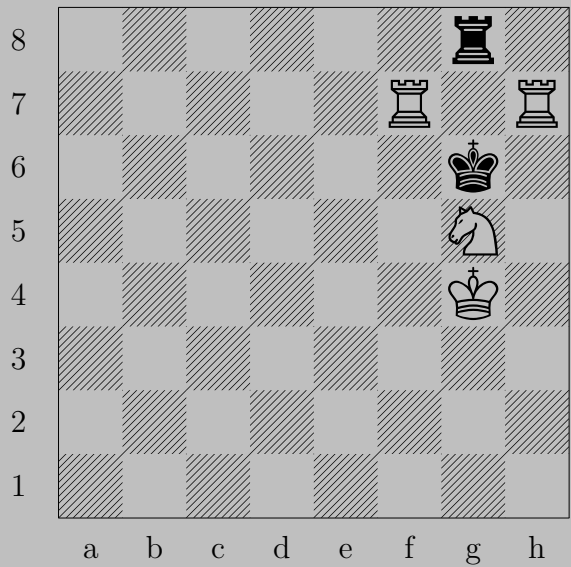


$\text{R}(h7)g7$

If  $\text{N}c8$  or  $\text{N}f7$  or  $\text{Ke8}$ ,  $\text{R}g8$ .

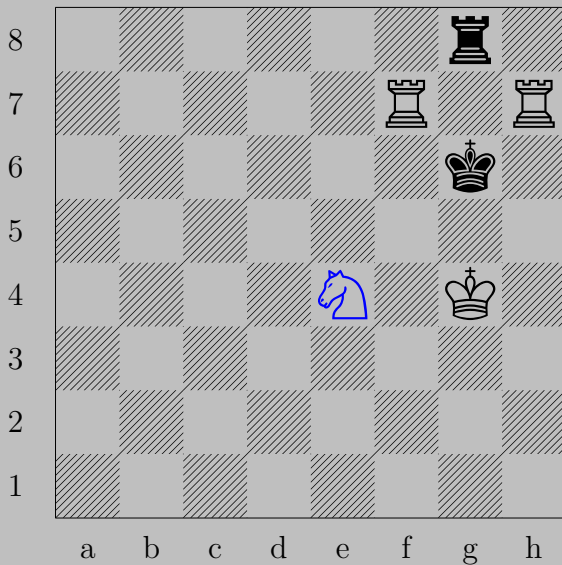
Otherwise,  $\text{Ra8}$ .

2830



H. Sokka, 1967

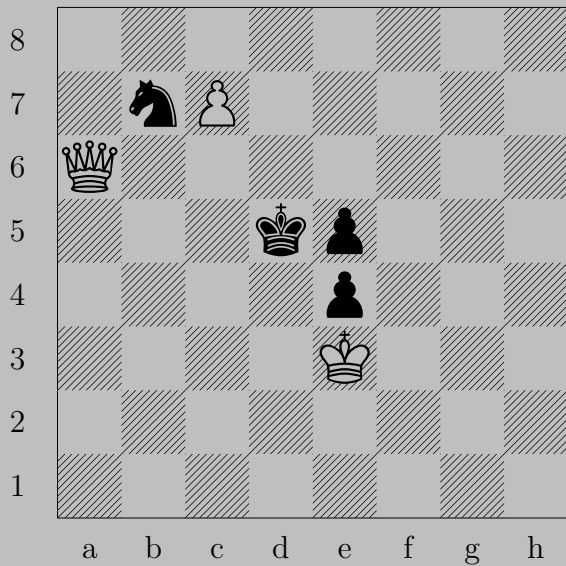
2830



$\text{N}e4$

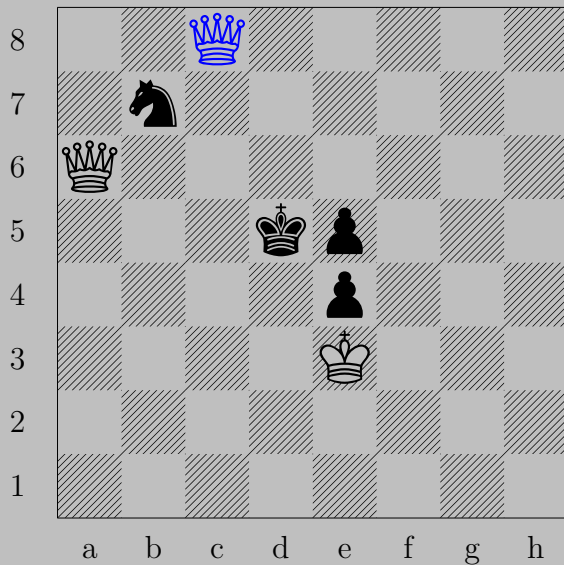
If  $\text{R}g7$ ,  $\text{R}(f7)\times g7$ . Otherwise,  $\text{R}(f7)g7$

2831



I. Sokolov, 1955

2831

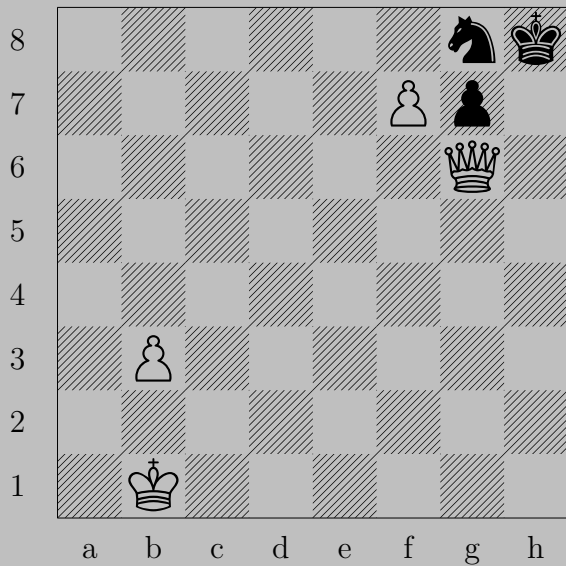


$\text{♕c8}(\text{♔})$

If  $\text{♞a5}$ ,  $\text{♔(a6)e6}$ . If  $\text{♞d8}$ ,  $\text{♔(c8)c4}$ . If  $\text{♞c5}$ ,  $\text{♔(c8)c6}$ . If  $\text{♞d6}$ ,  $\text{♔(a6)c6}$ .

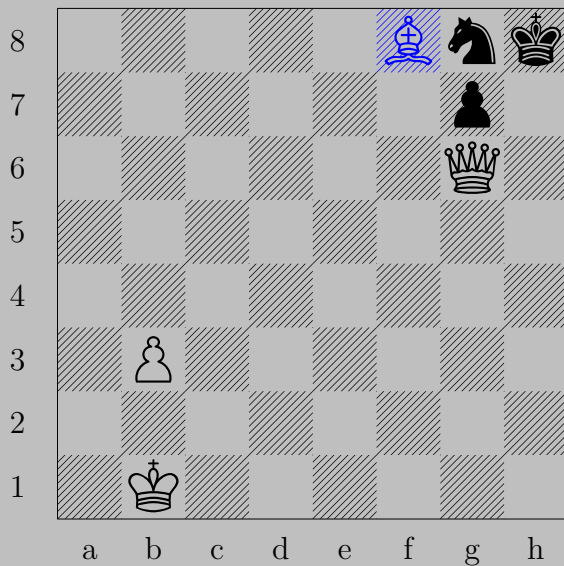


2832



I. Sokolov, 1973

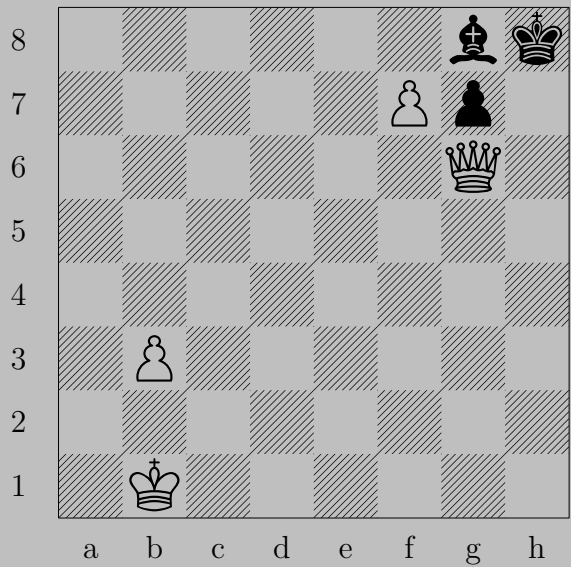
2832



$\text{♗f8}$ ( $\text{♗}$ ),  $\text{♞e7}$  or  $\text{♞f6}$  or  $\text{♞h6}$

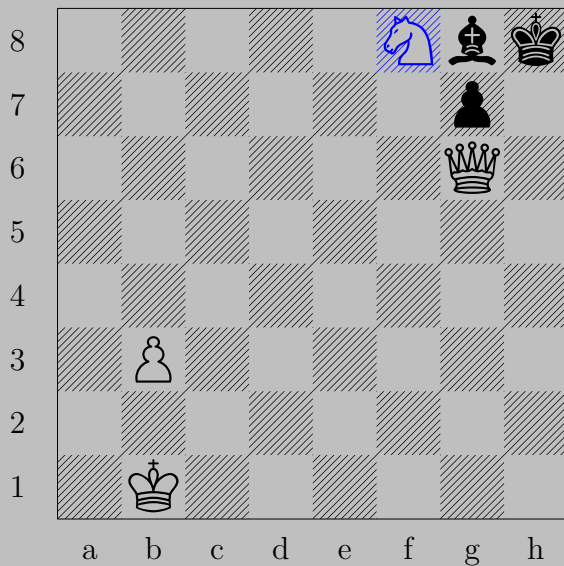
$\text{♚}\times\text{g7}$

2833



I. Sokolov, 1973

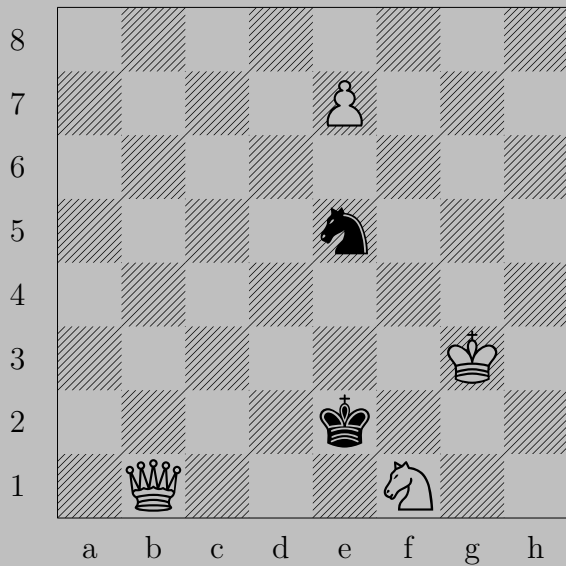
2833



$\text{♞f8}(\text{♞})$

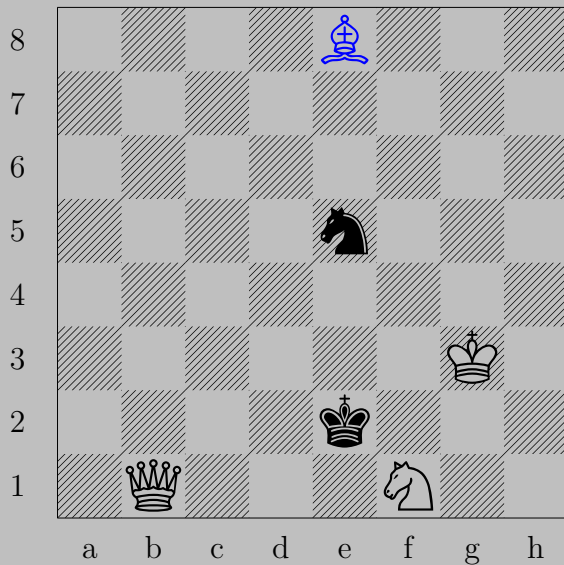
If  $\text{♞h7}$ ,  $\text{♞}\times\text{h7}$ . Otherwise,  $\text{♞h7}$ .

2834



A. Sokolov, 1938

2834

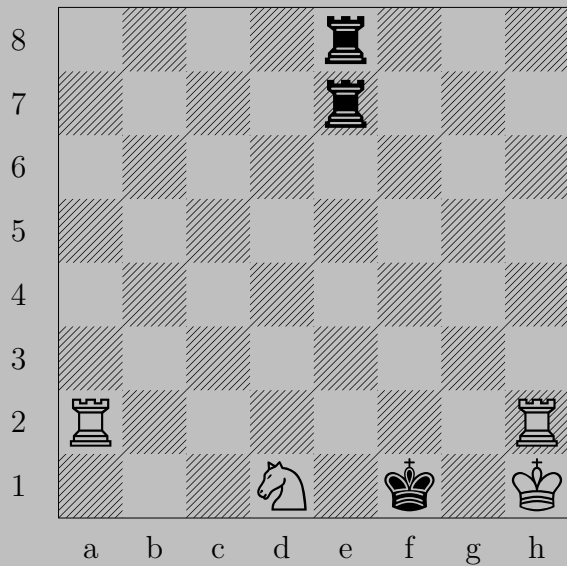


$\text{♔e8}$ (♔)

If  $\text{♞f7}$  or  $\text{♞g6}$  or  $\text{♞g4}$  or  $\text{♞f3}$ ,  $\text{♕b5}$ .

If  $\text{♞d7}$  or  $\text{♞c6}$  or  $\text{♞c4}$  or  $\text{♞d3}$ ,  $\text{♕h5}$ .

2835



I. Sokolov, 1937

2835



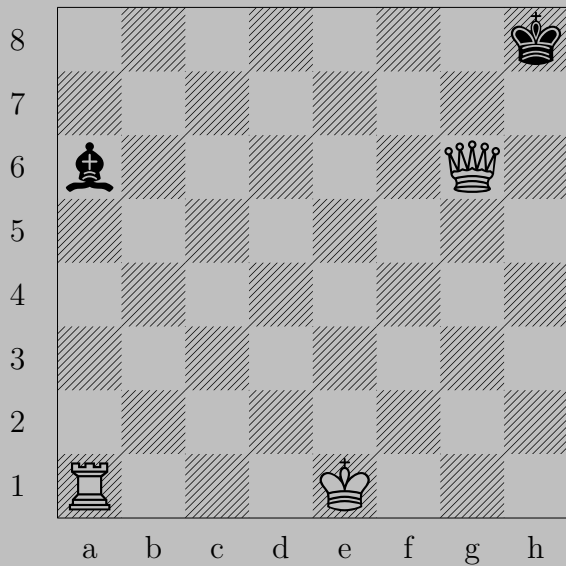
$\text{R}a1$

If  $\text{R}e1$ ,  $\text{R}f2$ .

If  $\text{R}e3$ ,  $\text{N}xe3$ . Otherwise,  $\text{N}e3$ .

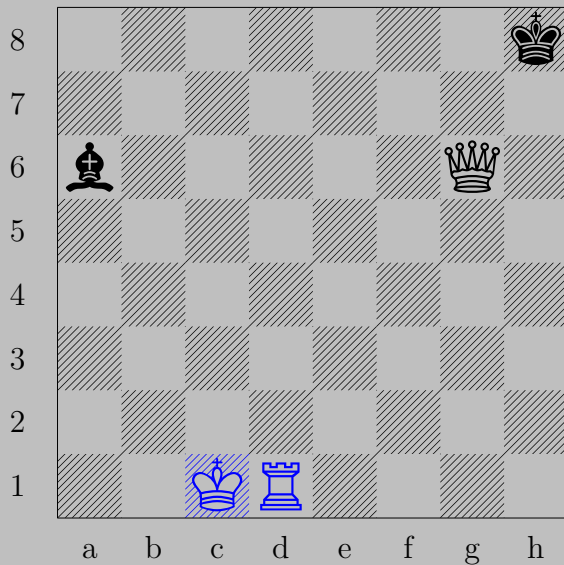


2836



I. Sokolov, 1955

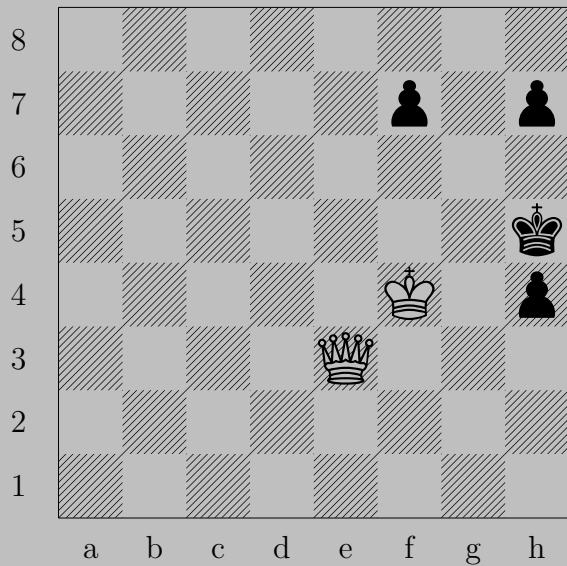
2836



O-O-O

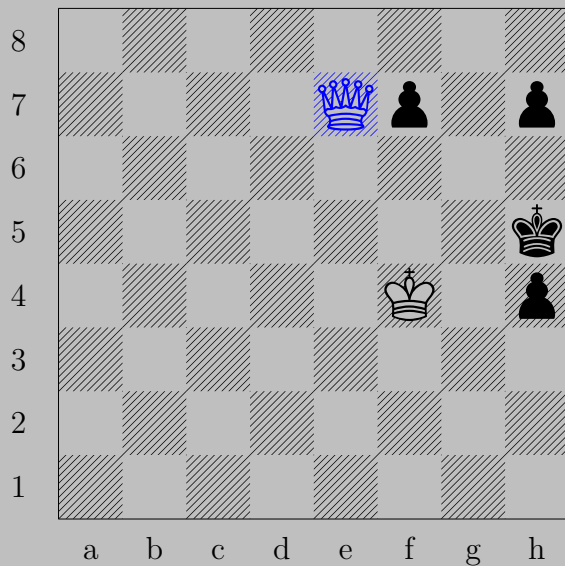
If ♔e2-f1 or ♔b7-c8, ♖d8. If ♔b5-d3, ♖h1.

2837



F. Sola, 1925

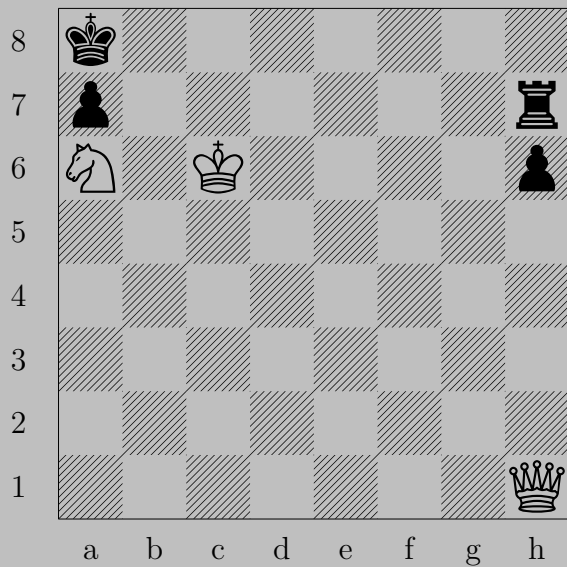
2837



♔e7

If ♖g6 or ♖h6, ♔g5. If ♜f6 or ♜f5, ♔xh7. If ♜h6, ♔xf7.

2838



I. Solheim, 1935

2838



b1

If c7+, xc7. If h8, b7. If b7, xb7.

Otherwise, b8.

2839



A. F. Solovjev, 1929

2839



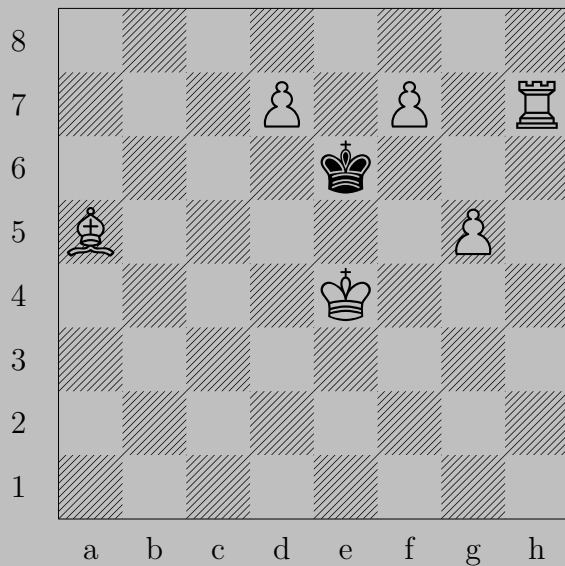
♚h5

If ♔a2-g8, ♖f8. If ♞e5 or ♞h8, ♖e6.

Otherwise, ♚xf7.

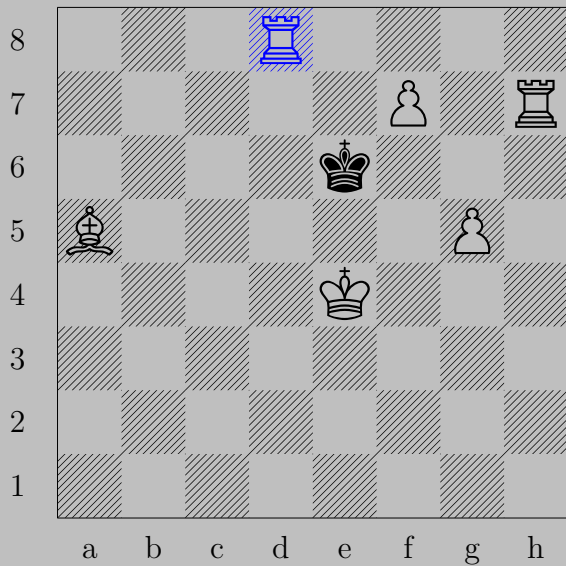


2840



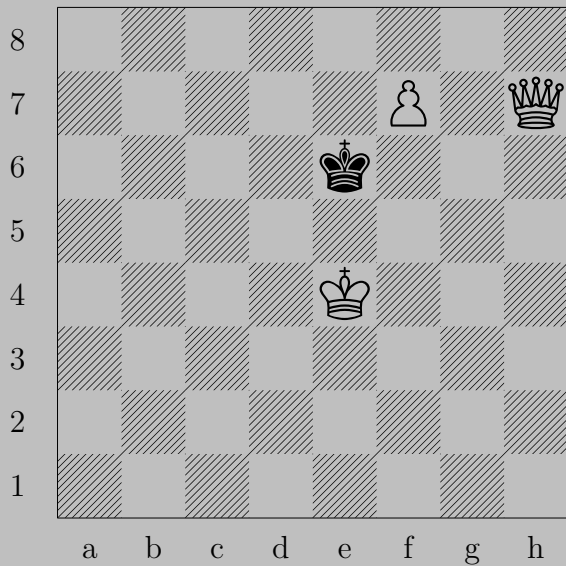
W. Speckmann, 1964

2840



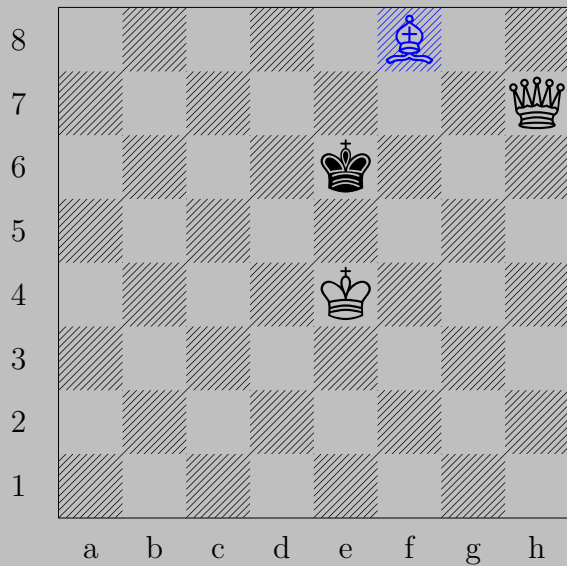
♖d8(♖), ♔e7  
♖f8(♖)

2841



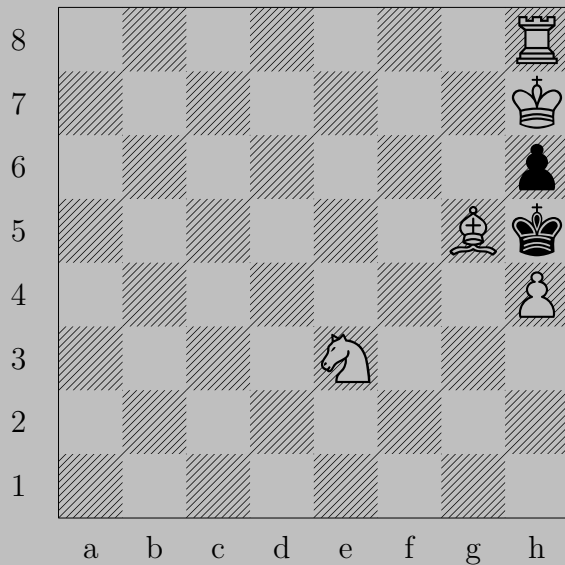
W. Speckmann, 1963

2841



♠f8(♠), ♚f6  
♛f5

2842



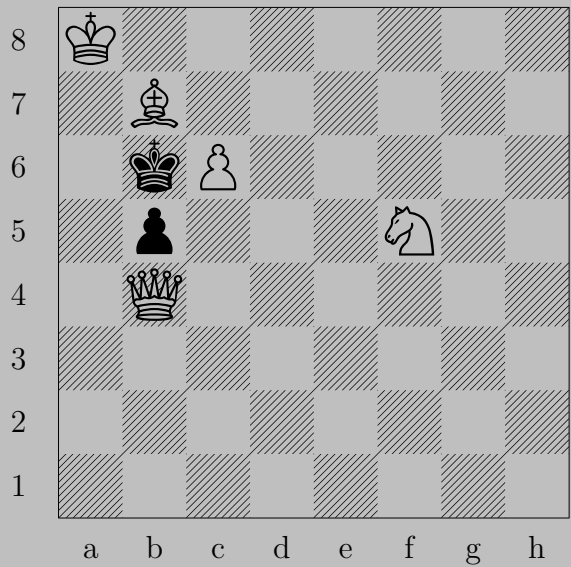
W. Speckmann, 1984

2842



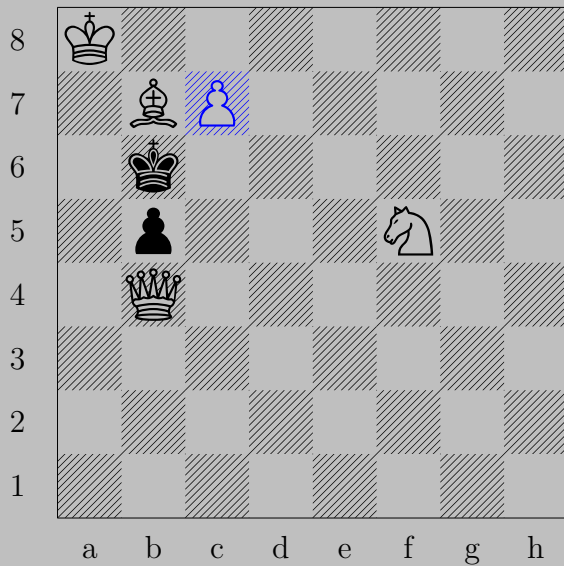
♔g8, ♔g6  
♖xh6

2843



W. Speckmann, 1986

2843

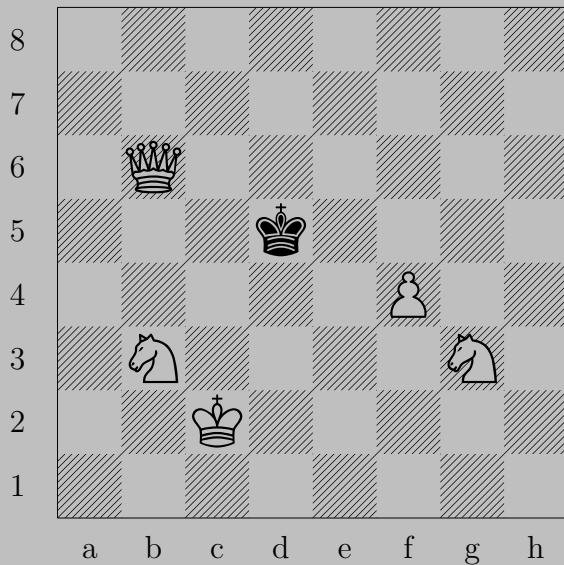


♖c7, ♔xc7

♙d6

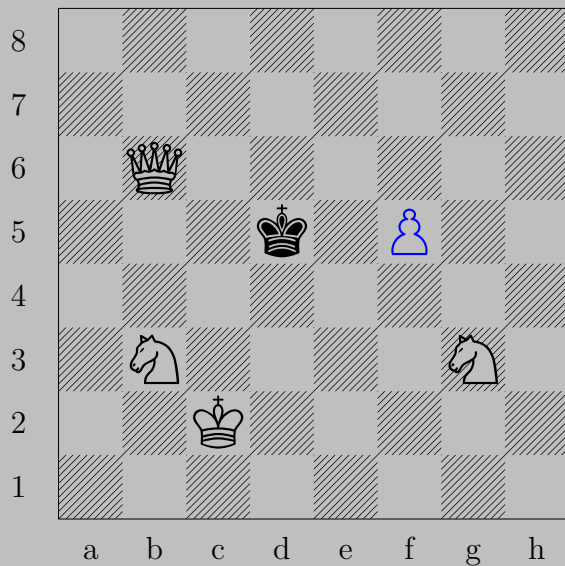


2844



W. Speckmann, 1985

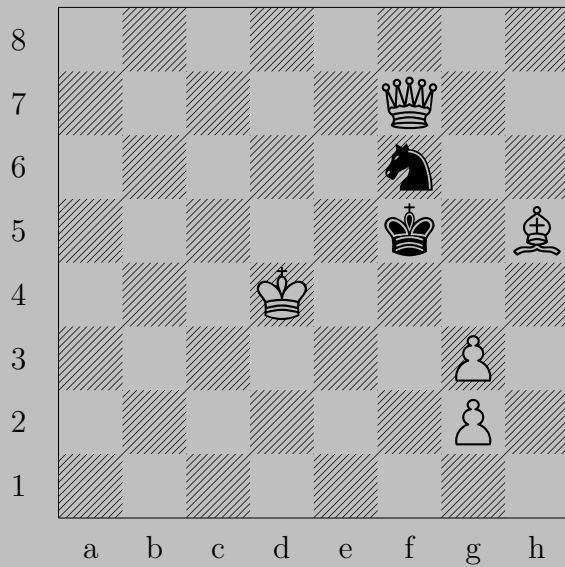
2844



♞f5

If ♔e5, ♚d4. If ♔c4, ♚c5.

2845



W. Speckmann, 1984

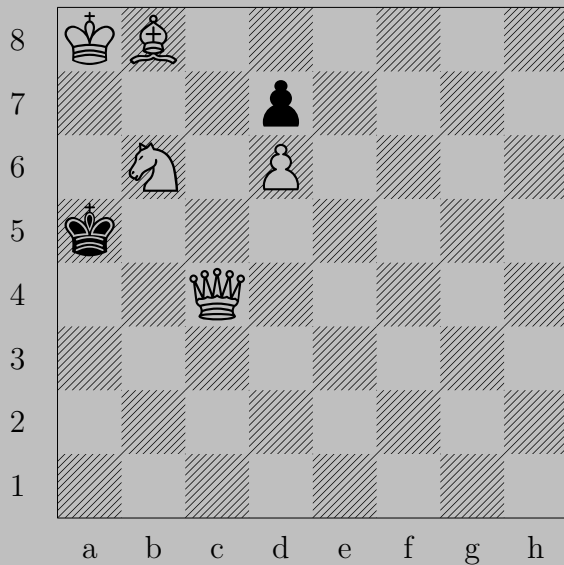
2845



$\text{♙g4+}$

If  $\text{♚xg4}$ ,  $\text{♜g6}$ . If  $\text{♚g5}$ ,  $\text{♜g7}$ .

2846



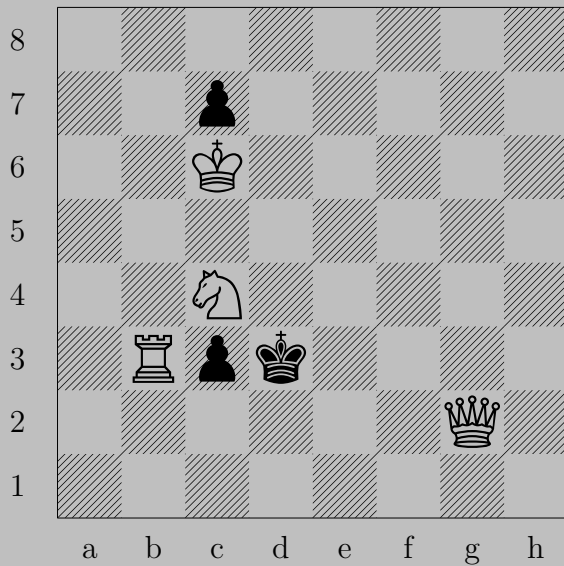
W. Speckmann, 1985

2846



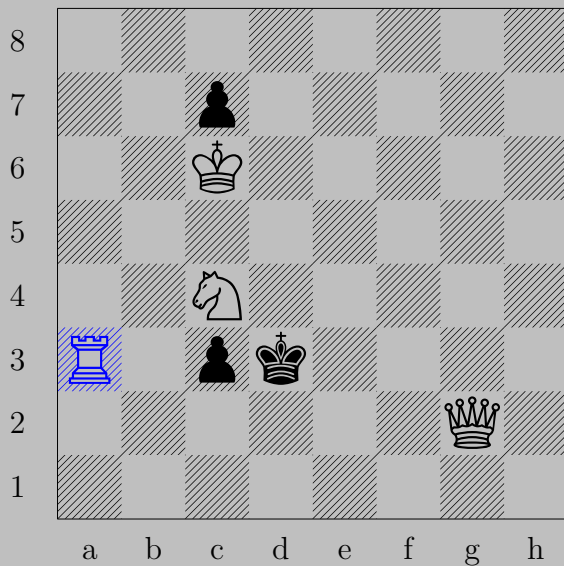
♙a4+, ♚×b6  
♜a7

2847



W. Speckmann, 1984

2847

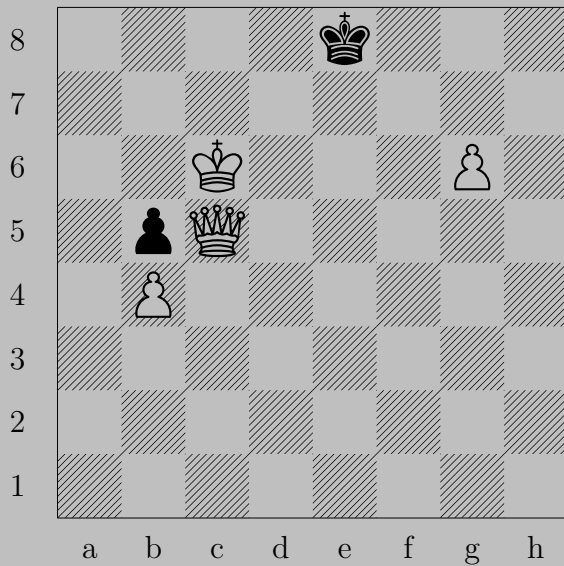


$\text{R}a3$

If  $\text{K}xc4$ ,  $\text{Q}e4$ . If  $\text{K}d4$ ,  $\text{Q}d5$ .

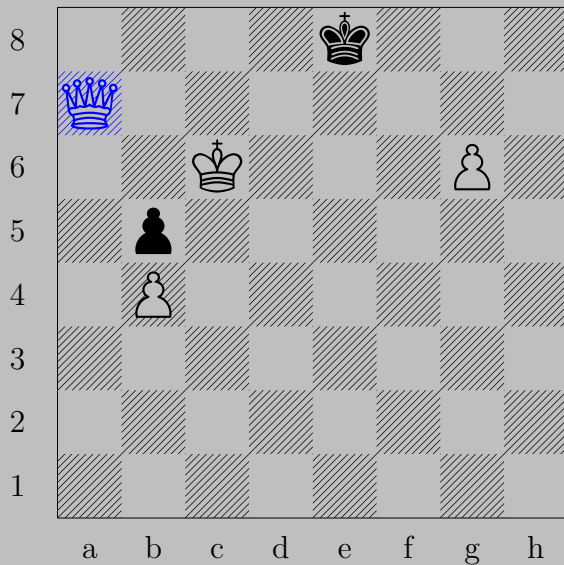


2848



W. Speckmann, 1986

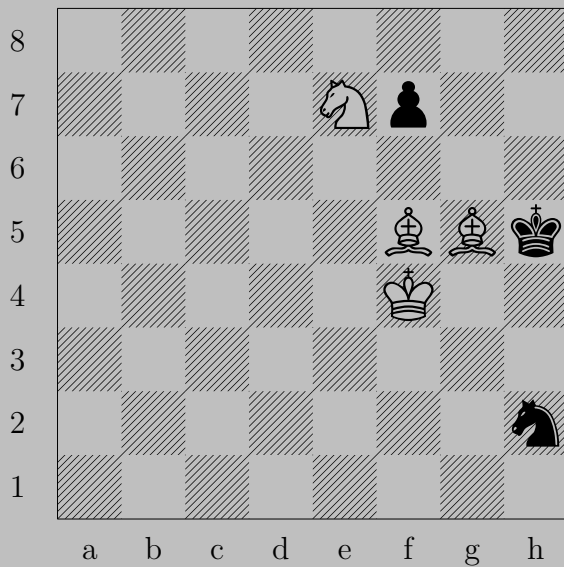
2848



♚a7

If ♠d8, ♚d7. If ♠f8, ♚f7.

2849



W. Speckmann, 1986

2849

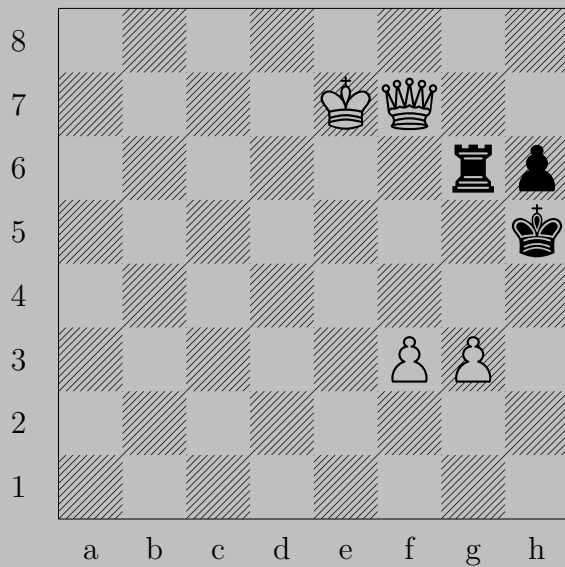


$\text{♗d7}$

If  $\text{♖f6}$  or  $\text{♖f5}$ ,  $\text{♗e8}$ .

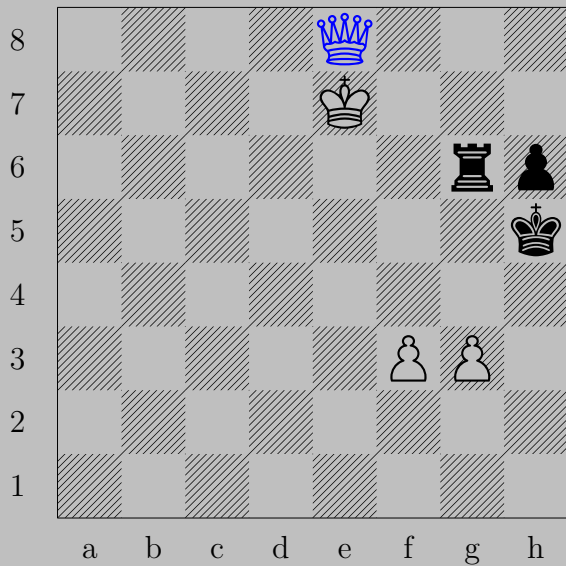
If  $\text{♞g4}$ ,  $\text{♗xg4}$ . Otherwise,  $\text{♗g4}$ .

2850



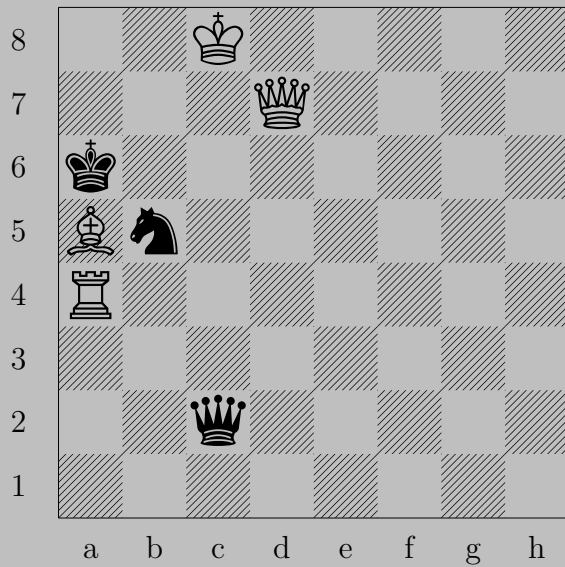
W. Speckmann, 1985

2850



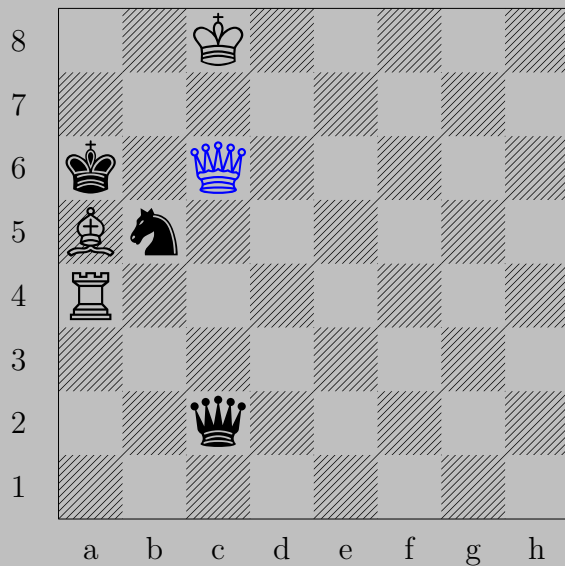
♙e8, ♚g5  
♙b5

2851



W. Speckmann, 1963

2851



♔c6+

If ♕xc6+, ♘c7. If ♔a7, ♘b7.



2852



W. Speckmann, 1956

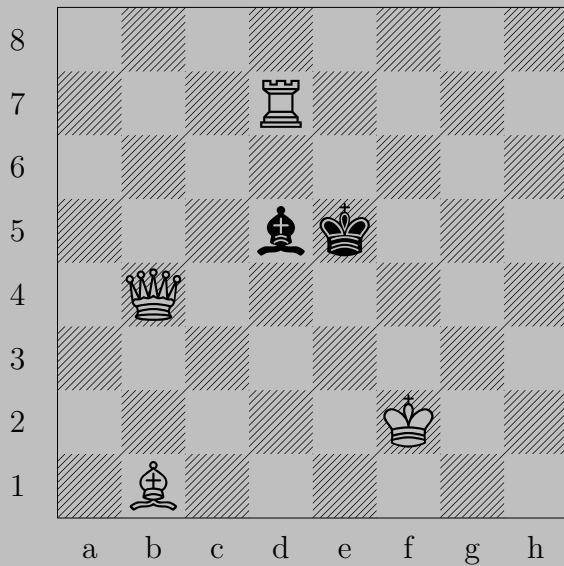
2852



♔b6, anything

♖d6

2853



W. Speckmann, 1963

2853



$\text{♞h7}$

If  $\text{♞e6}$  or  $\text{♞f6}$ ,  $\text{♞e7}$ .

Otherwise,  $\text{♞d6}$ .

2854



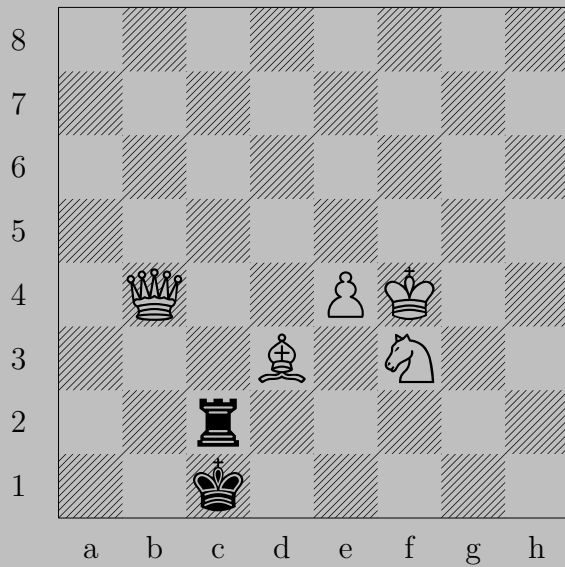
W. Speckmann, 1964

2854



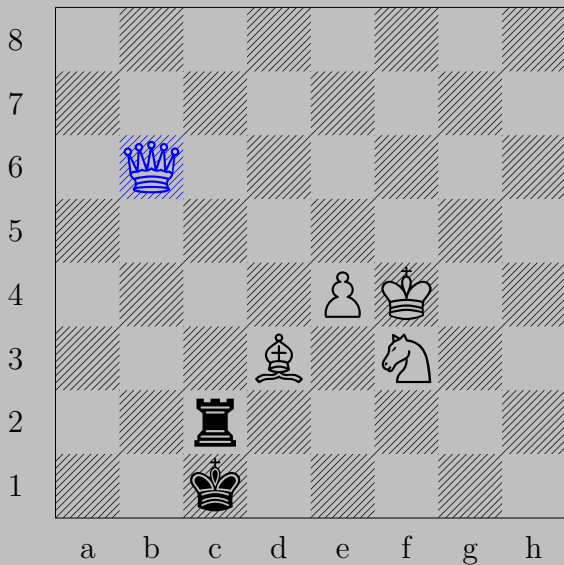
$\text{R}e4, \text{K} \times e4$   
 $\text{K}h7$

2855



W. Speckmann, 1985

2855



♙b6

If ♙d1 or ♖b2, ♙g1.

Otherwise, ♙b1.

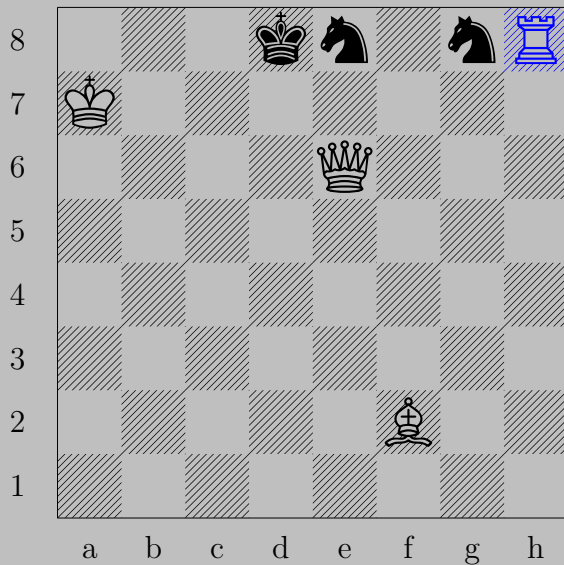


2856



W. Speckmann, 1959

2856

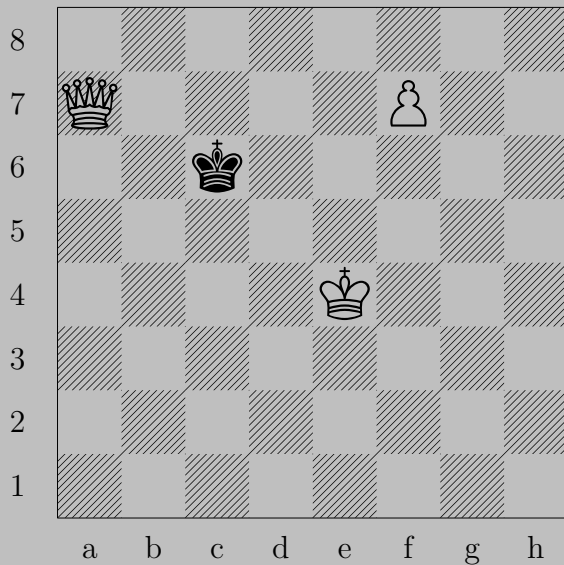


$\text{R}h8$

If  $\text{N}c7$ ,  $\text{B}h4$ .

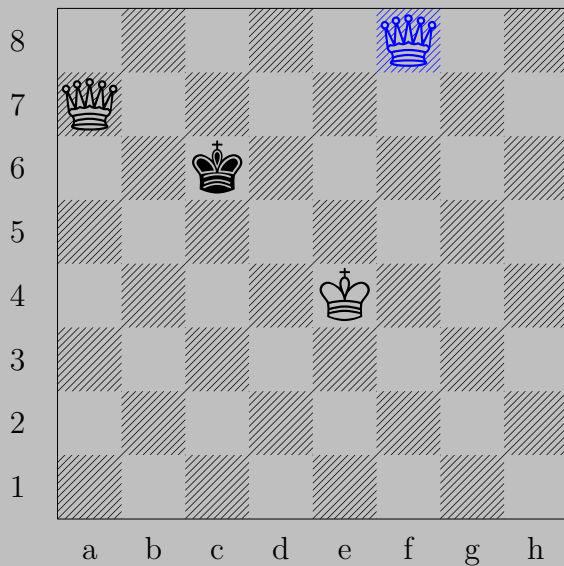
Otherwise,  $\text{B}b6$ .

2857



W. Speckmann, 1963

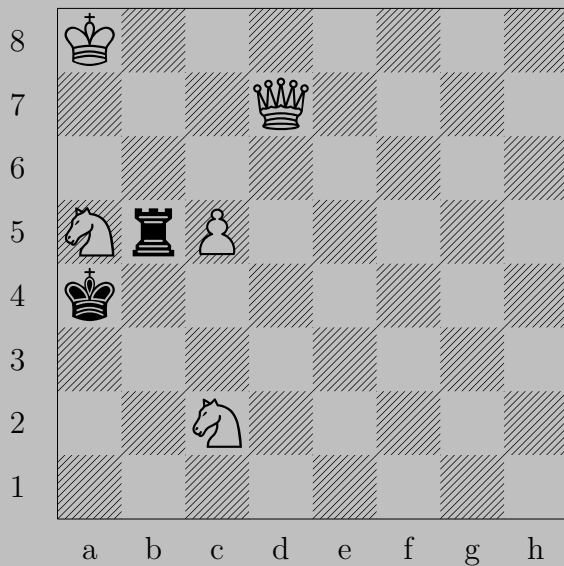
2857



$\text{♕f8}(\text{♕}), \text{♔b5}$

$\text{♕(f8)c5}$

2858



W. Speckmann, 1985

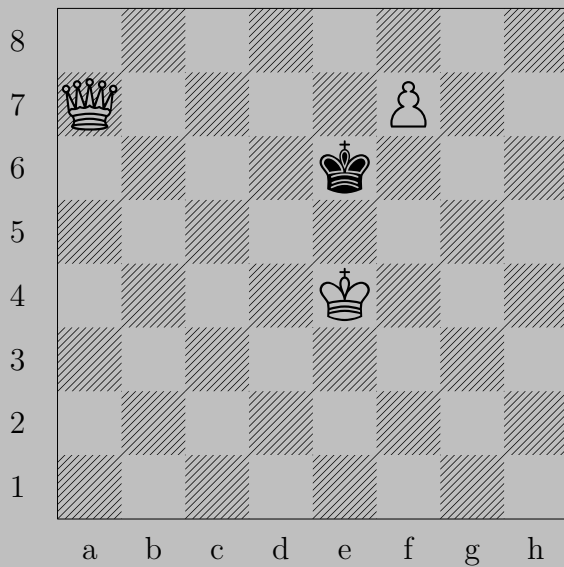
2858



♔d4+

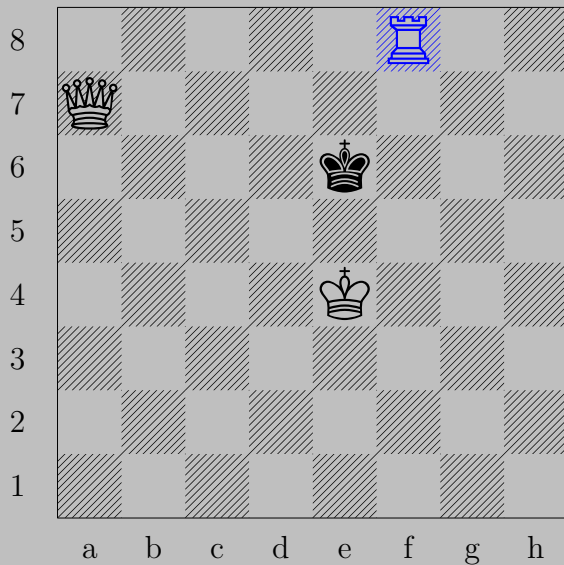
If ♙xa5, ♔a1. If ♖b4, ♔xb4.

2859



W. Speckmann, 1963

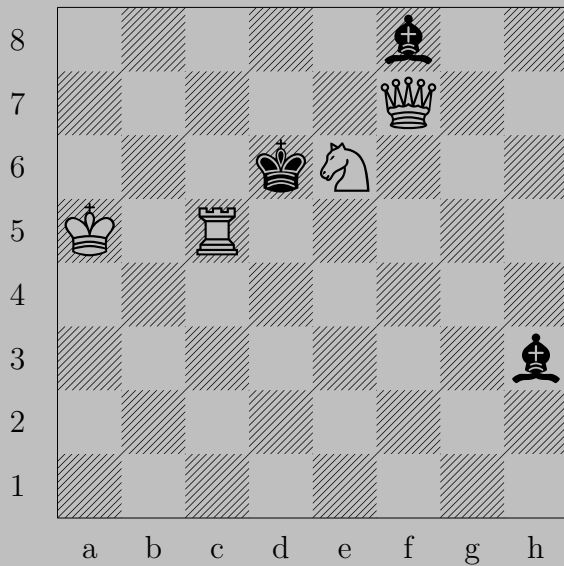
2859



♔f8(♖), ♕d6  
♖f6

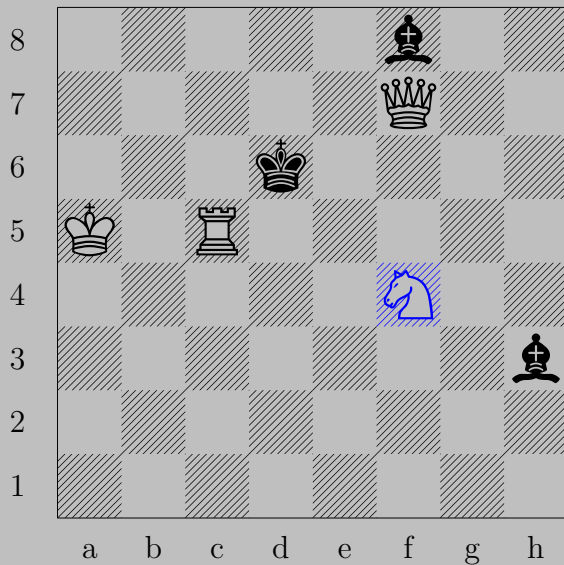


2860



W. Speckmann, 1962

2860

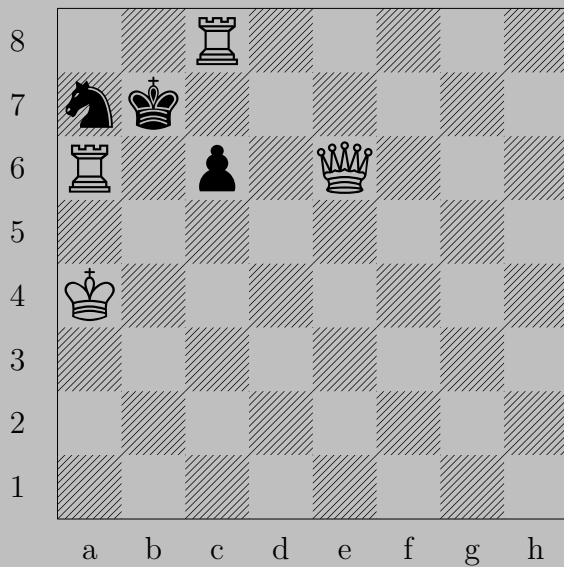


$\text{Nf4}$

If  $\text{Qxc5}$ ,  $\text{Kd5}$ . If  $\text{Bd7}$ ,  $\text{Qxf8}$ .

Otherwise,  $\text{Qc7}$ .

2861



W. Speckmann, 1938

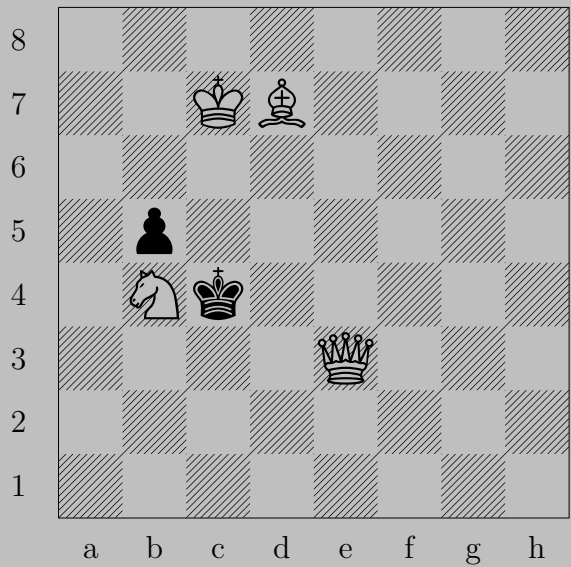


$\text{R}a8$

If  $\text{Q} \times a8$  or  $\text{N}b5$ ,  $\text{Q}c8$ . If  $\text{Q} \times a6$ ,  $\text{Q} \times c6$ . If  $\text{Q}c7$ ,  $\text{Q}e7$ . If  $\text{N}c8$ ,  $\text{Q} \times c8$ .

If  $\text{P}c5$ ,  $\text{R}(a6) \times a7$ .

2862



W. Speckmann, 1963

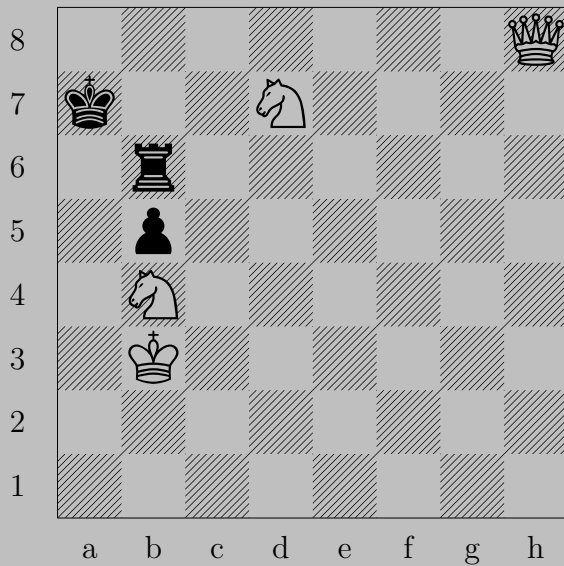
2862



♘d5

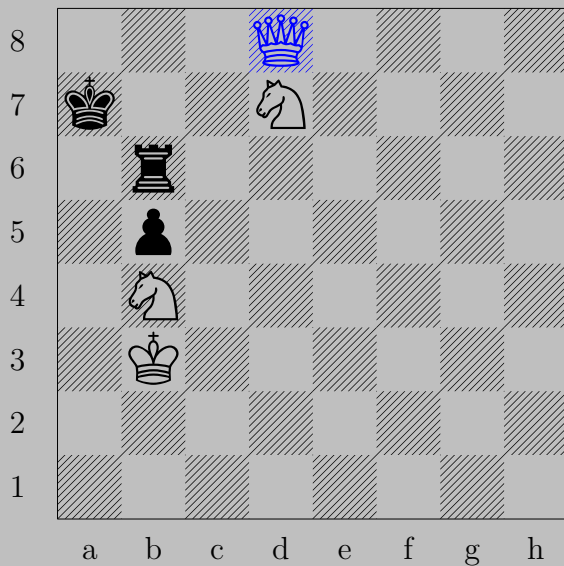
If ♔×d5, ♙e6. If ♖b4, ♘b6.

2863



W. Speckmann, 1964

2863

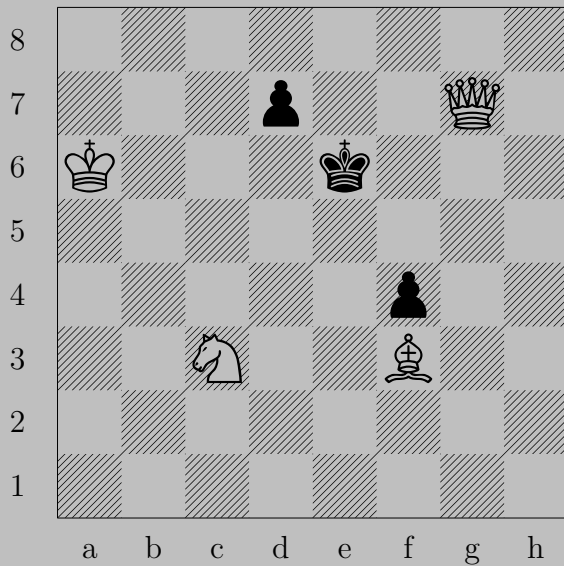


♙d8

If ♙b7 or ♖a6-h6, ♙b8. If ♖b7, ♙a5. If ♖b8, ♙x b8.



2864



W. Speckmann, 1962

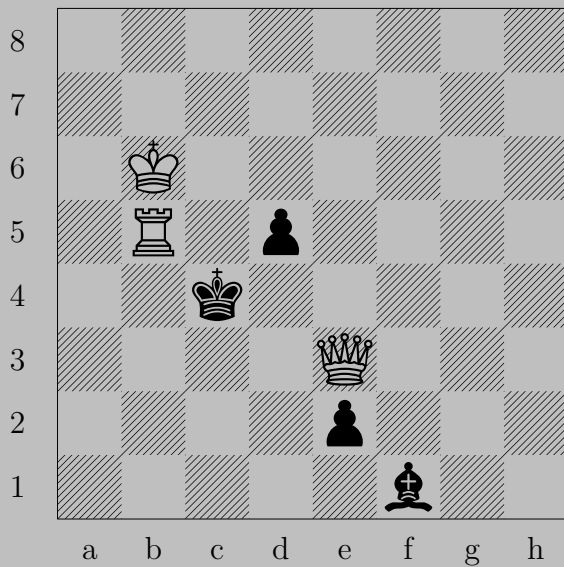
2864



♞b5

If ♔f5 or ♖d6, ♞d4. If ♖d5, ♙g4.

2865



W. Speckmann, 1962

2865

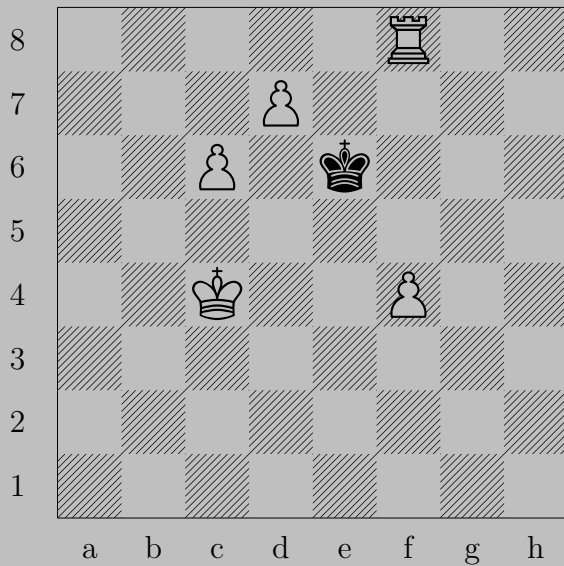


♔d2

If ♕d4, ♔c2.

Otherwise, ♖b4.

2866



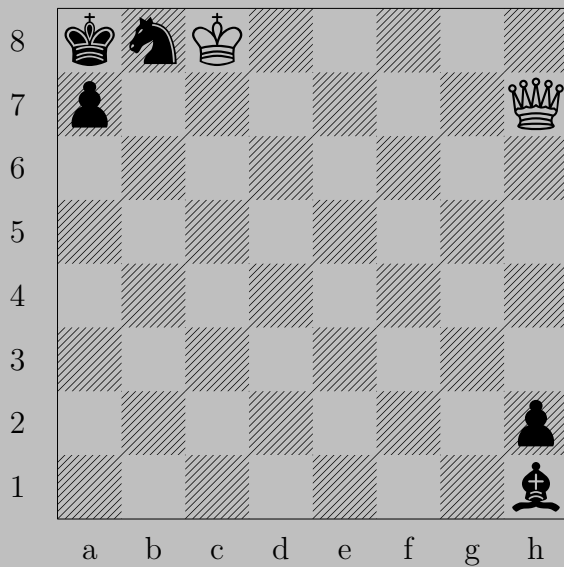
W. Speckmann, 1963

2866



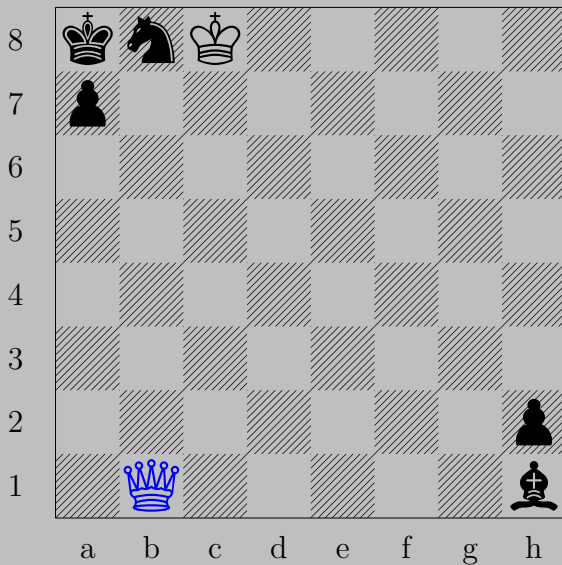
♖d8(♗), ♚d6  
♜f6

2867



W. Speckmann, 1982

2867



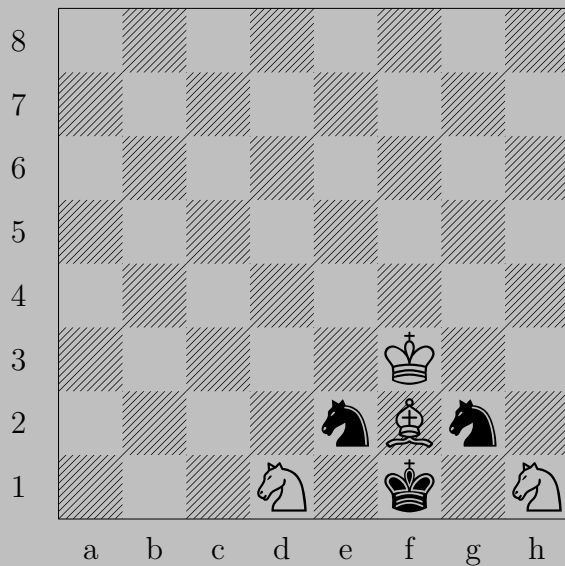
♔b1

If ♞c6, ♔b7. If ♞a6 or ♞d7, ♔xh1. If ♞b7, ♔xb7.

Otherwise, ♔xb8.



2868



W. Speckmann, 1941

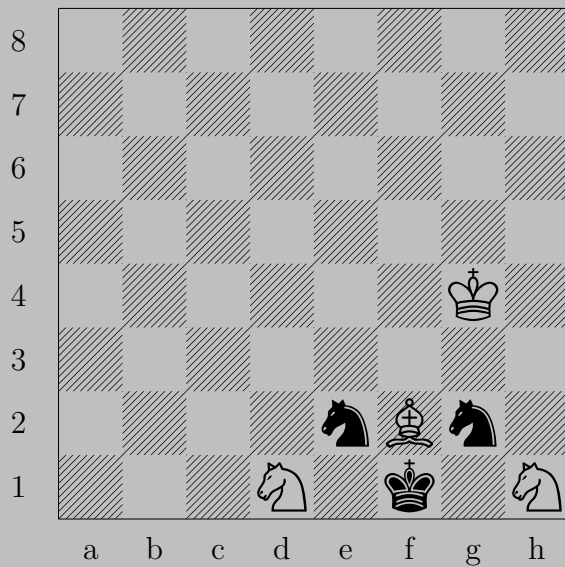


♔g4

If ♖e3+, ♗xe3. If ♖e1 or ♖(g2)f4 or ♖h4, ♖e3.

If ♖g3, ♗xg3. Otherwise, ♖g3.

2869



W. Speckmann, 1941

2869

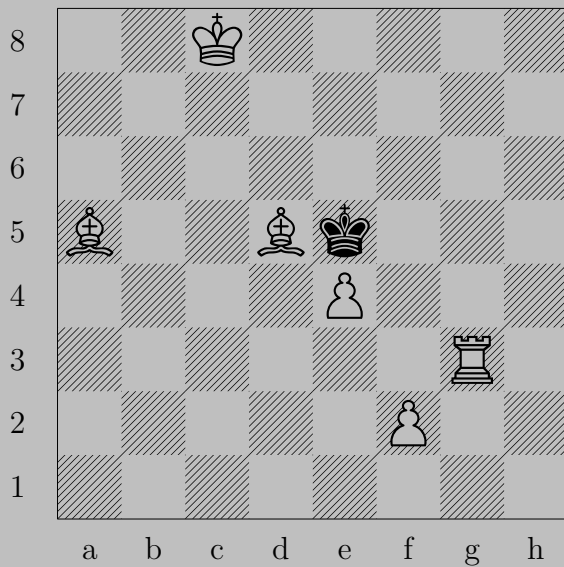


♔g5

If ♞e3, ♞xe3. If ♞e1 or ♞(g2)f4 or ♞h4, ♞e3.

If ♞g3, ♞xg3. Otherwise, ♞g3.

2870



W. Speckmann, 1941

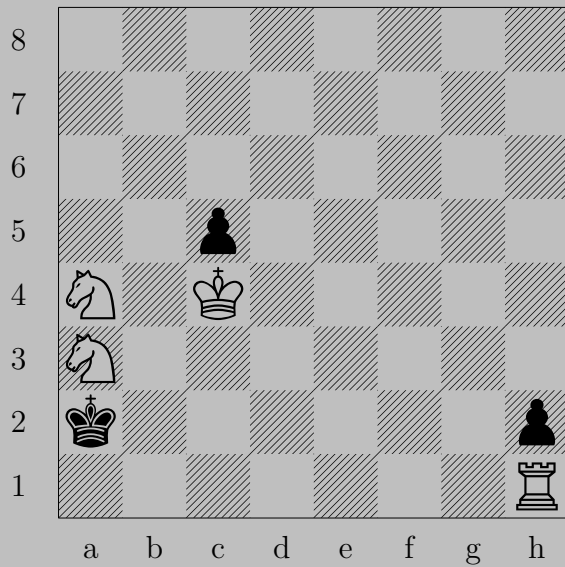
2870



♙f4+

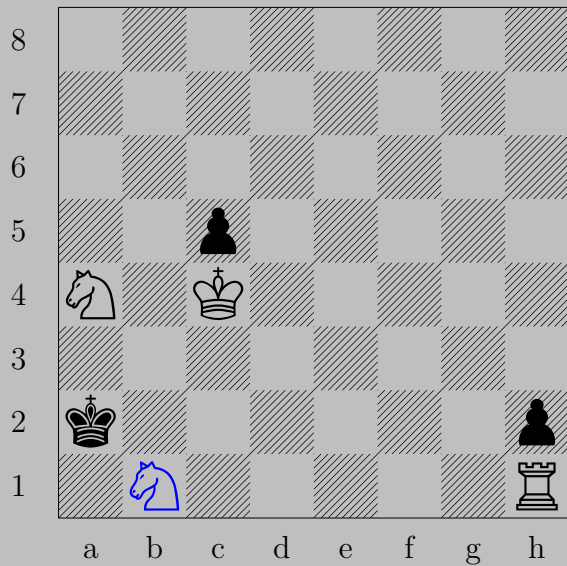
If ♔xf4, ♘c7. If ♔d4, ♘b6. If ♔d6, ♘b4. If ♔f6, ♘d8.

2871



W. Speckmann, 1963

2871

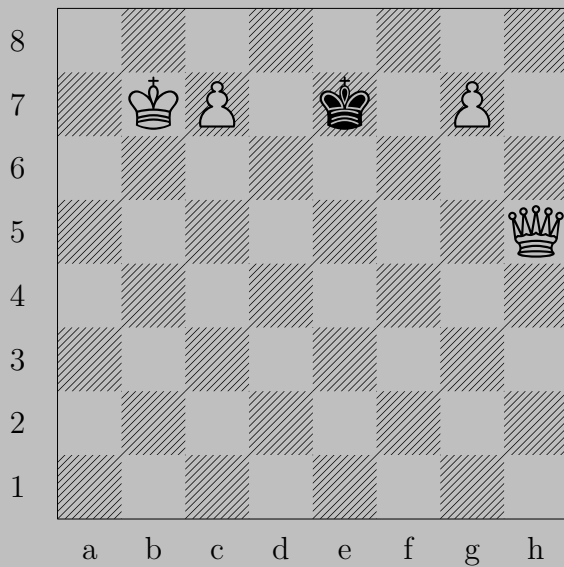


♞b1, ♔a1

♞c3



2872



W. Speckmann, 1964

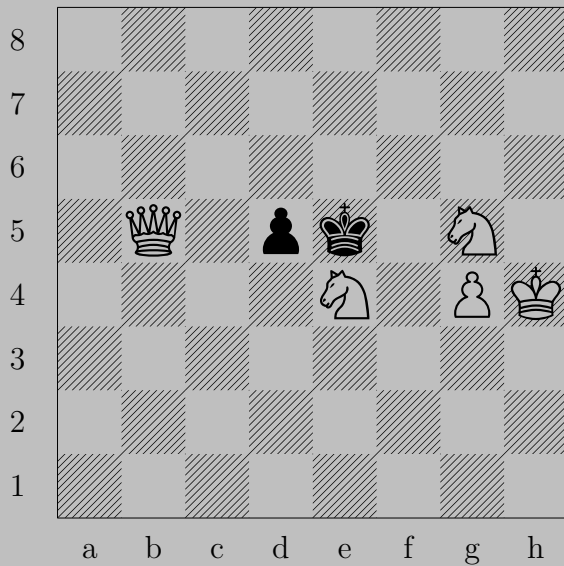
2872



♔f5

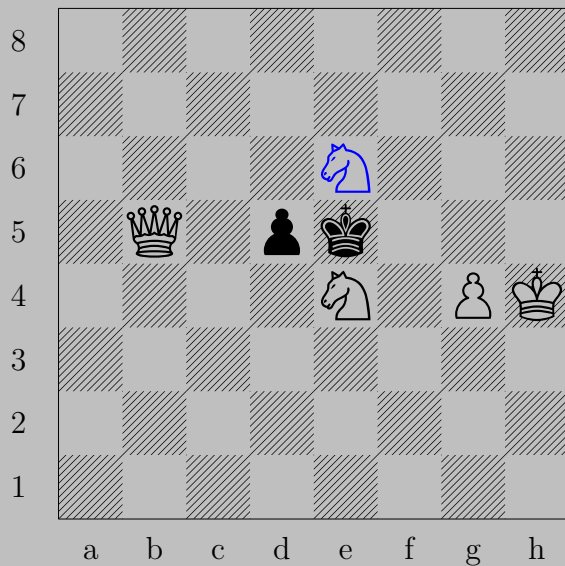
If ♔d6, ♕c8(♘). If ♔e8, ♔e6.

2873



W. Speckmann, 1963

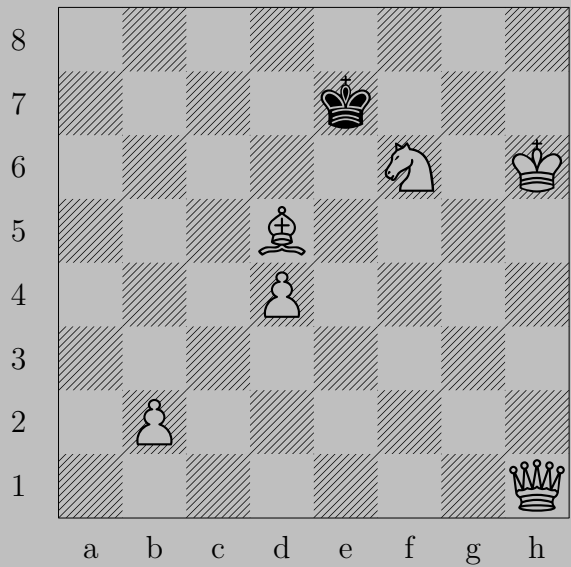
2873



♞e6

If ♚×e6, ♚e8. If ♚×e4, ♚e2.

2874



W. Speckmann, 1970

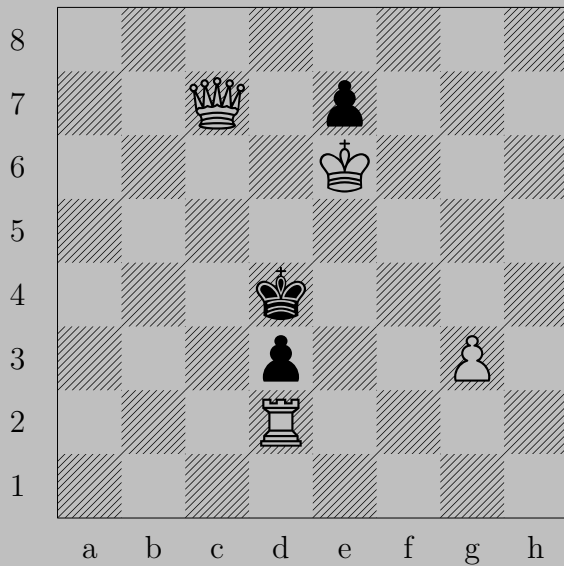
2874



♚h3

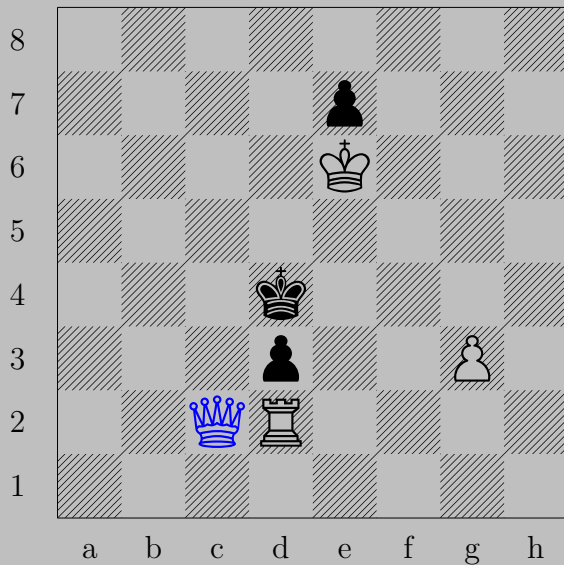
If ♙×f6, ♚e6. If ♙d6 or ♙d8, ♚e7. If ♙f8, ♚a3.

2875



W. Speckmann, 1985

2875



♙c2, ♖e3 or ♗e4

♙xd3.



2876



W. Speckmann, 1970

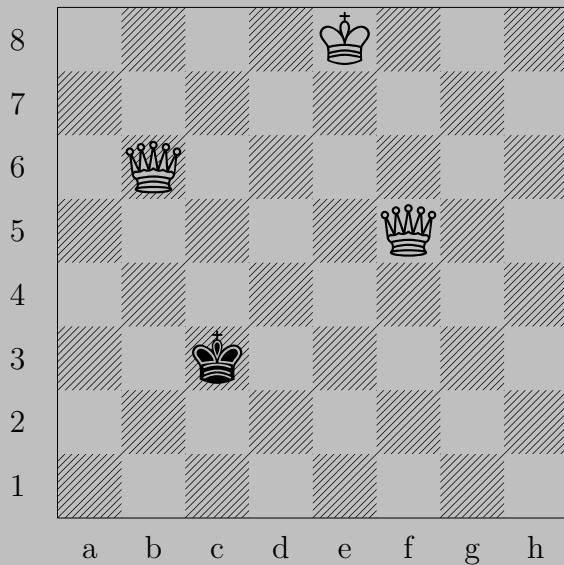
2876



♔c1

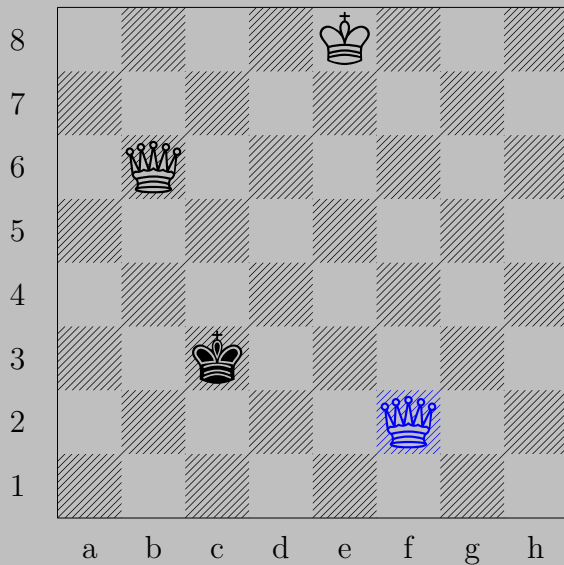
If ♕×f6, ♔g5. If ♕d6 or ♕d8, ♔c7. If ♕f8, ♔c5.

2877



W. Speckmann, 1964

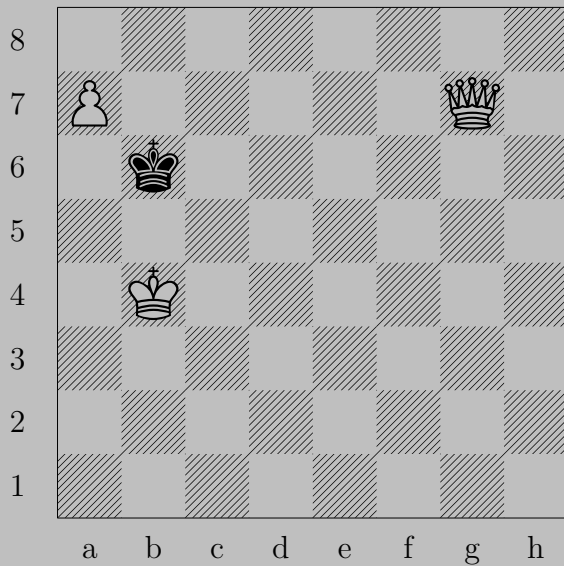
2877



♙(f5)f2

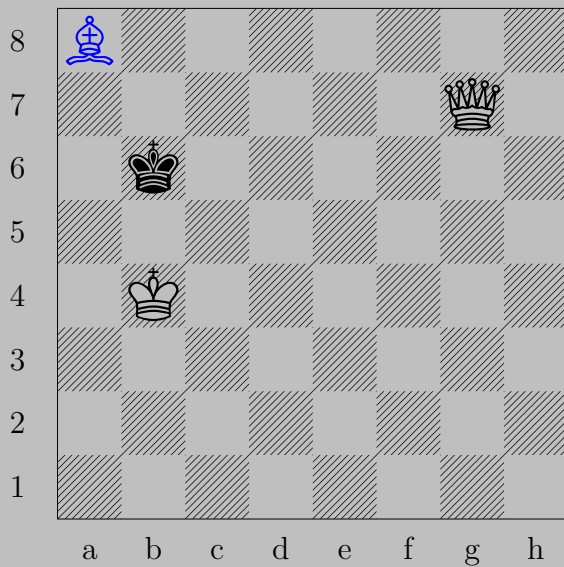
If ♔c4, ♙a2. If ♔d3, ♙b1.

2878



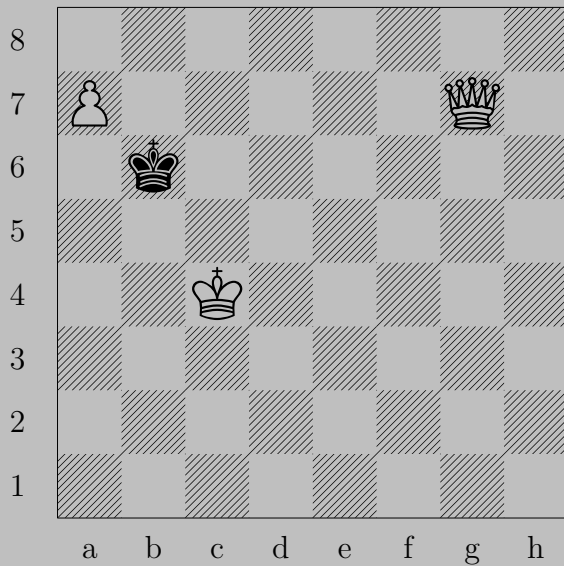
W. Speckmann, 1964

2878



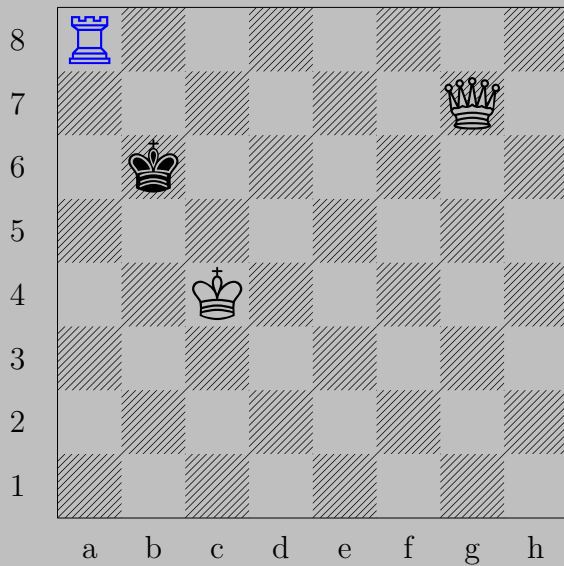
$\text{♗a8}$ ( $\text{♗}$ ),  $\text{♚a6}$   
 $\text{♔b4}$

2879



W. Speckmann, 1964

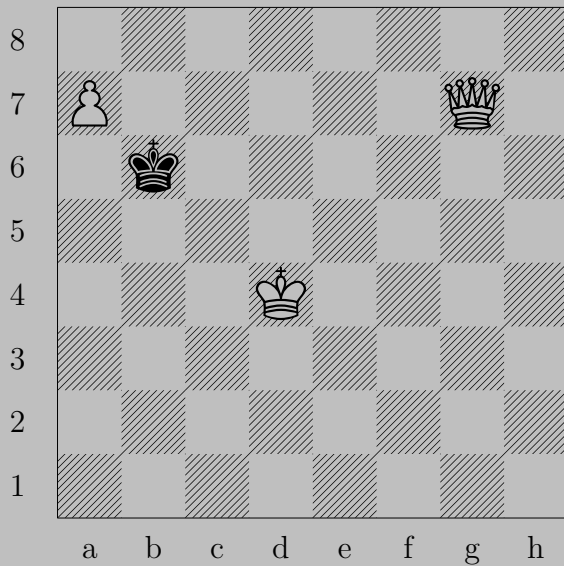
2879



$\text{♖a8}(\text{♖}), \text{♔c6}$   
 $\text{♞a6}$



2880



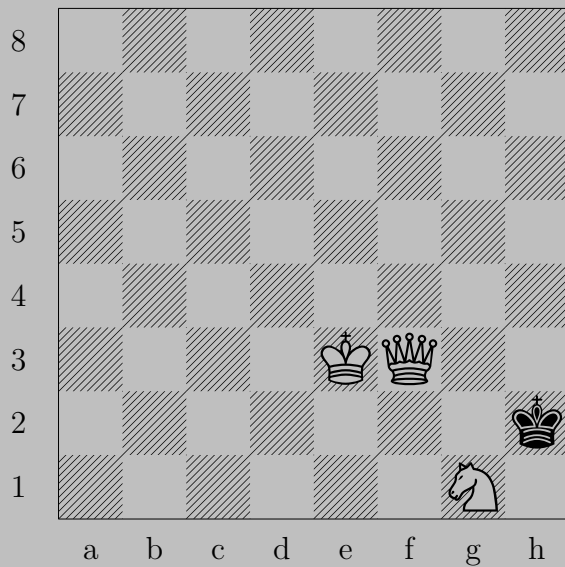
W. Speckmann, 1964

2880



$\text{♕a8}(\text{♕}), \text{♔b5}$   
 $\text{♕(g7)b7}$

2881



W. Speckmann, 1968

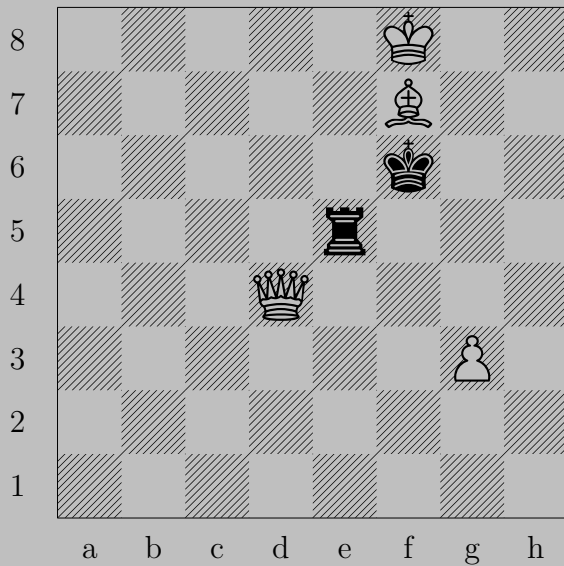
2881



♙f1

If ♔g3, ♚h3. If ♔h1, ♞f3.

2882



W. Speckmann, 1968

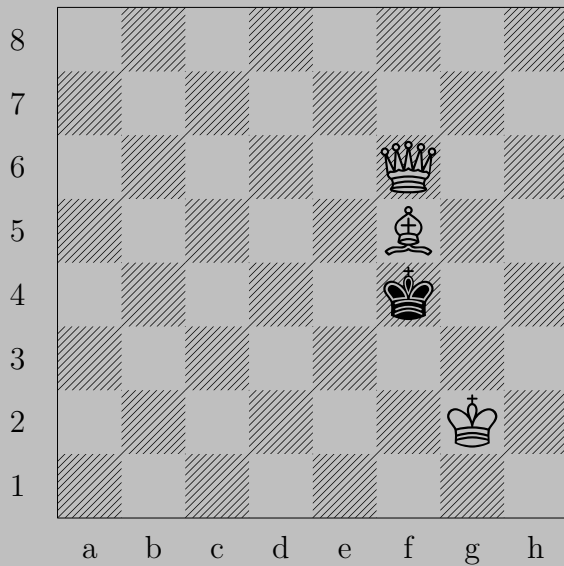
2882



♙d6+

If ♔g6, ♙g7. If ♖e6, ♙f4.

2883



W. Speckmann, 1967

2883

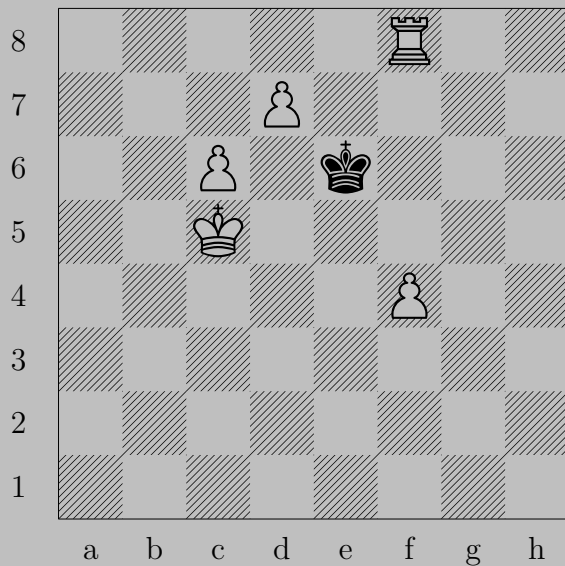


♖c2+

If ♔e3, ♚f2. If ♔g4, ♖d1.



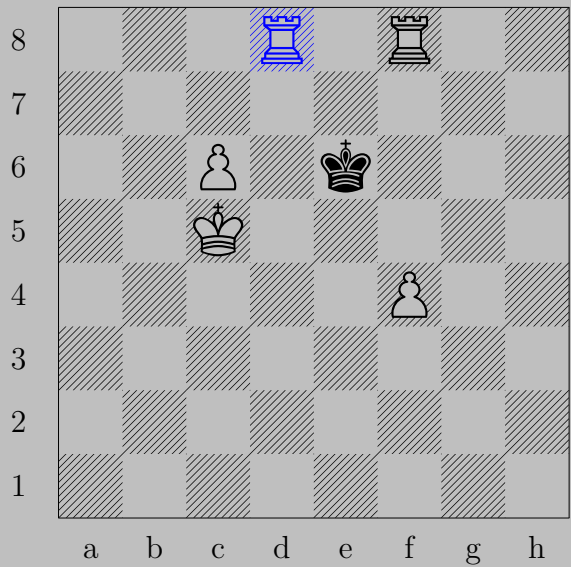
2884



(see [2886](#))

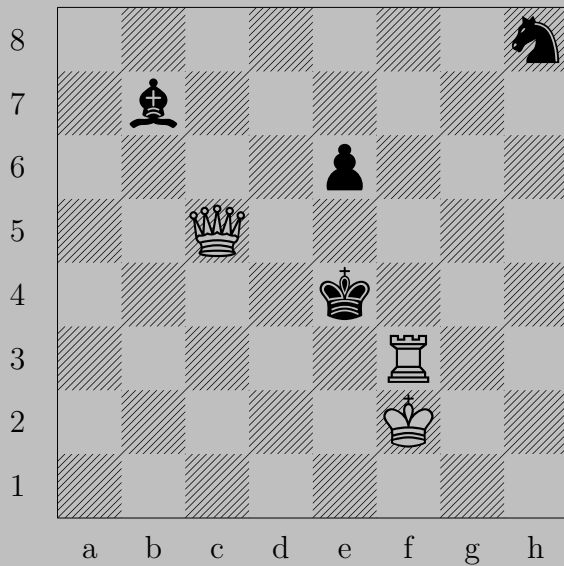
W. Speckmann, 1963

2884



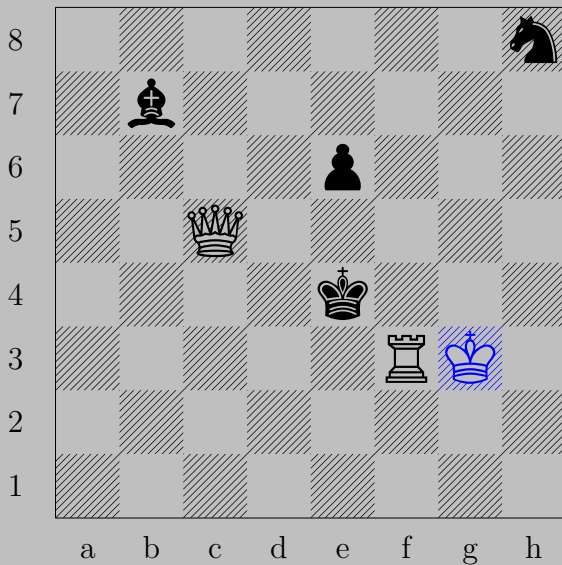
$\text{♔d8}(\text{♖}), \text{♕e7}$   
 $\text{♖(d8)e8}$

2885



W. Speckmann, 1961

2885

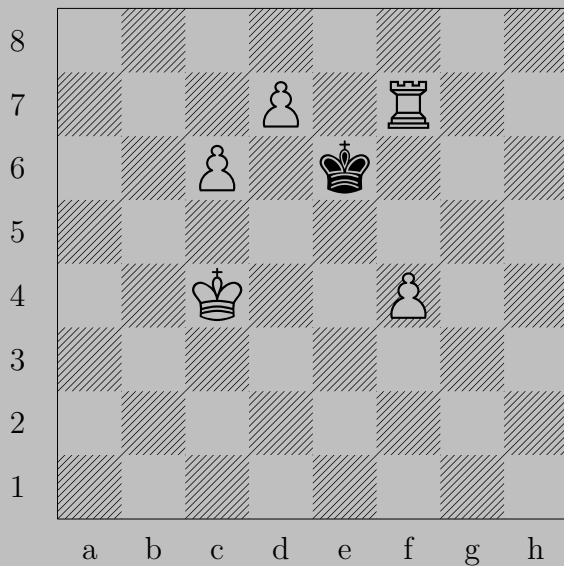


$\text{♔g3}$

If  $\text{♞e5}$ ,  $\text{♕c4}$ . If  $\text{♞d5}$ ,  $\text{♕e3}$ .

Otherwise,  $\text{♖e3}$ .

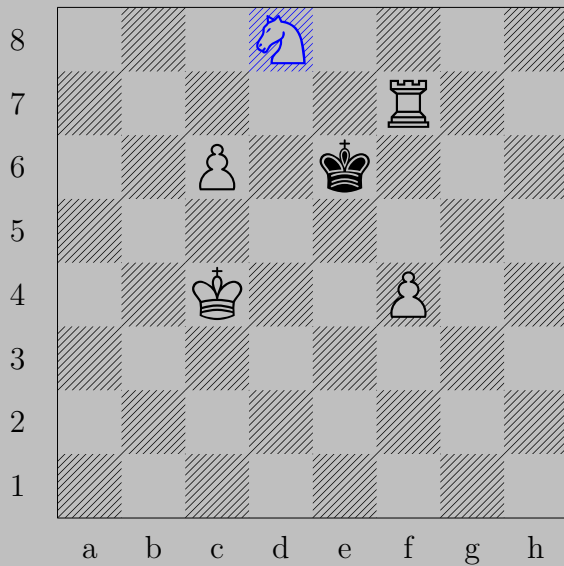
2886



(see [2884](#))

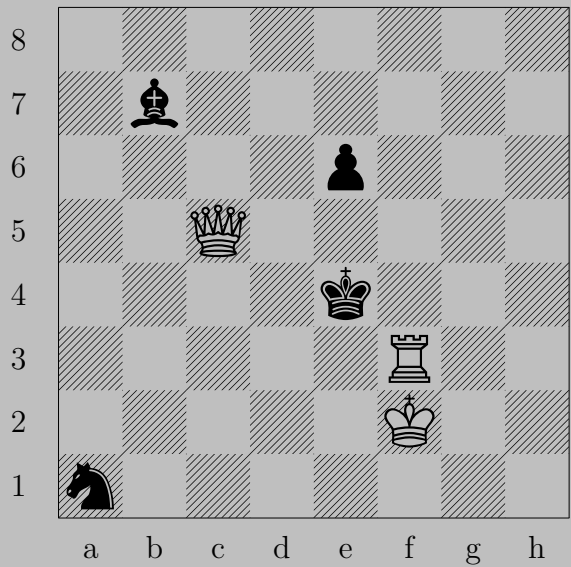
W. Speckmann, 1963

2886



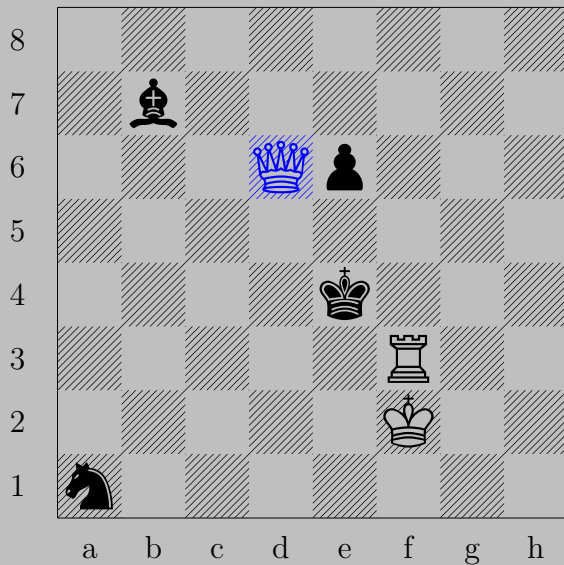
♙d8(♞)+, ♚d6  
♖d7

2887



W. Speckmann, 1961

2887



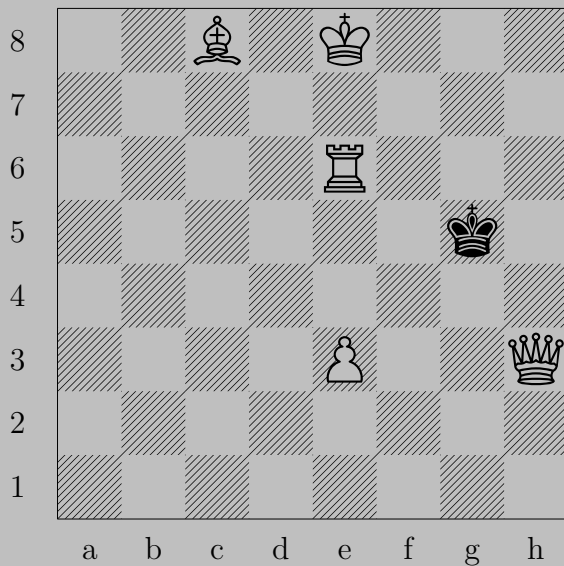
♙d6

If ♖e5, ♙d3.

Otherwise, ♖f4.



2888



W. Speckmann, 1964

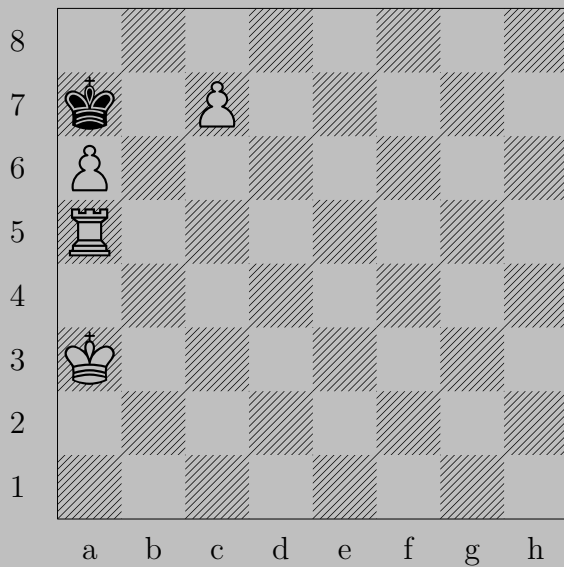
2888



♚h1

If ♙f5, ♚h5. If ♚g4, ♖g6.

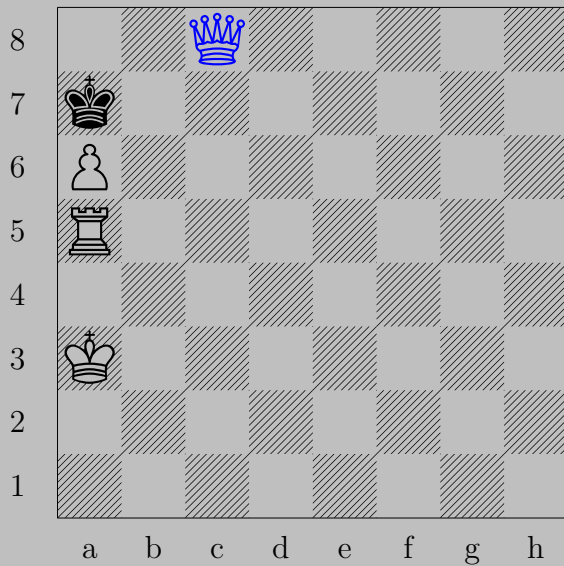
2889



(see [2896](#))

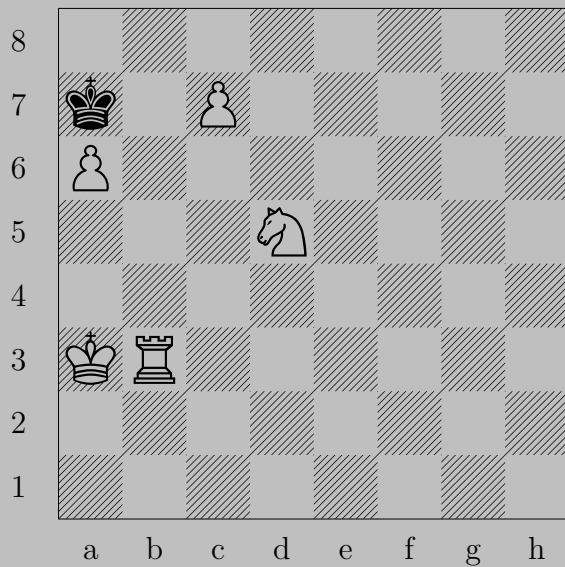
W. Speckmann, 1964

2889



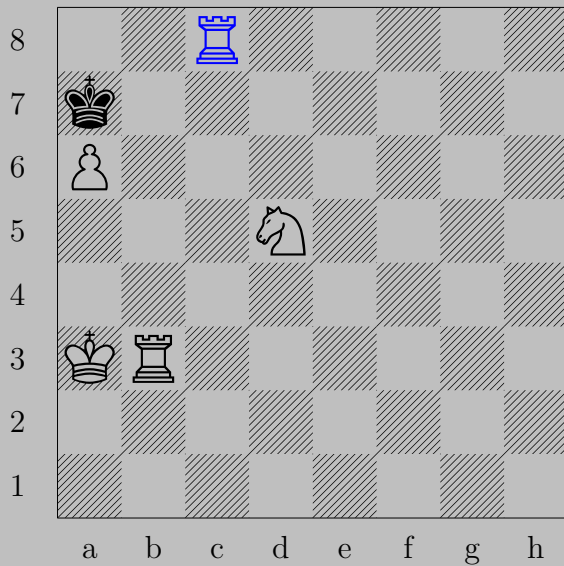
$\text{♔c8}(\text{♔}), \text{♗b6}$   
 $\text{♕c5}$

2890



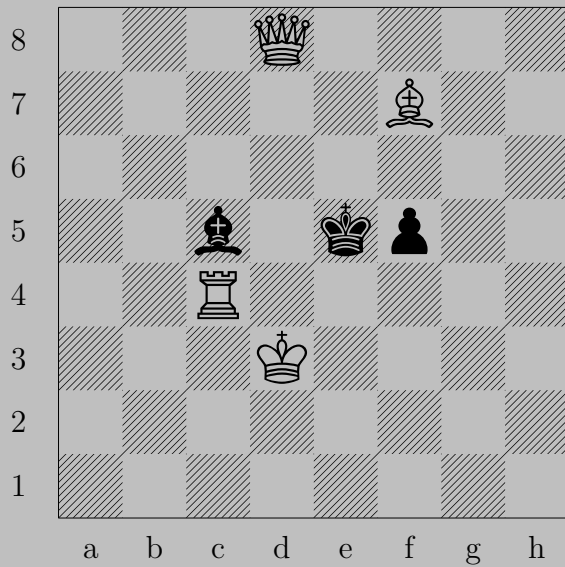
W. Speckmann, 1964

2890

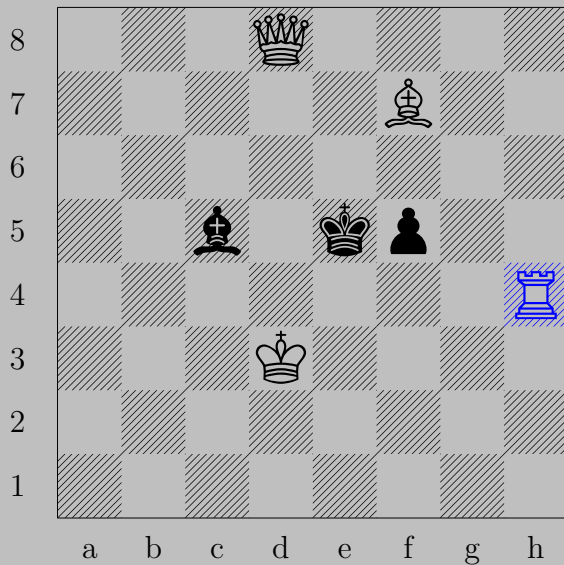


♖c8(♜), ♔×a6  
♜a8

2891



W. Speckmann, 1964



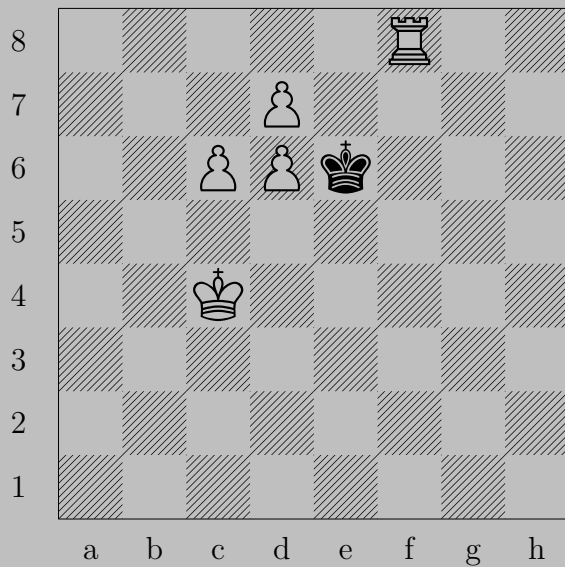
$\text{R}h4$

If  $\text{B}f4$ ,  $\text{R}h5$ . If  $\text{K}d6$ ,  $\text{K}h8$ . If  $\text{K}a7-g1$ ,  $\text{K}e7$ .

Otherwise,  $\text{K}d4$ .



2892



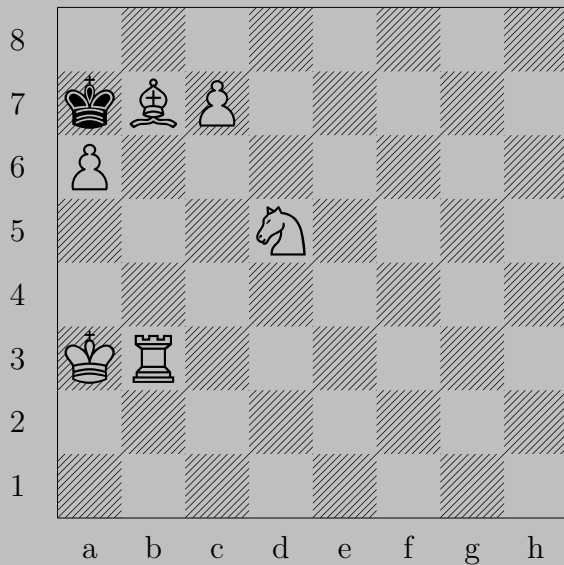
W. Speckmann, 1947

2892



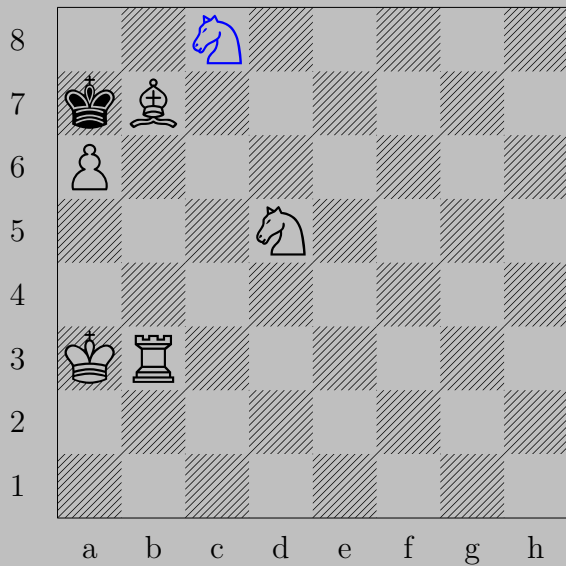
$\text{♕d8}(\text{♕}), \text{♚e5}$   
 $\text{♕e7}$

2893



W. Speckmann, 1963

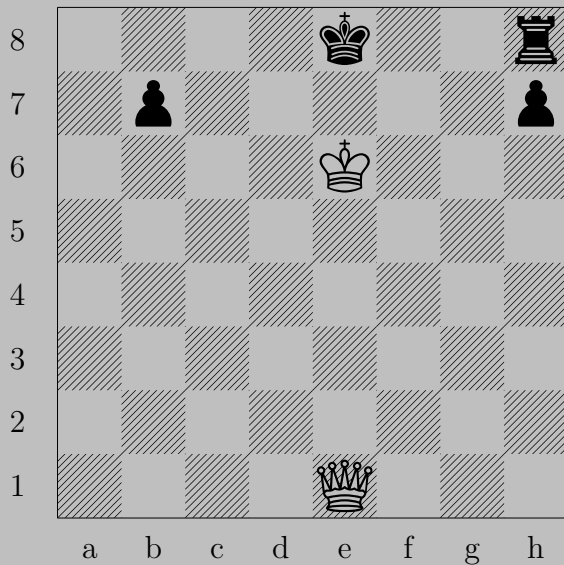
2893



$\triangleleft c8(\text{♞})+, \text{♔}b8$

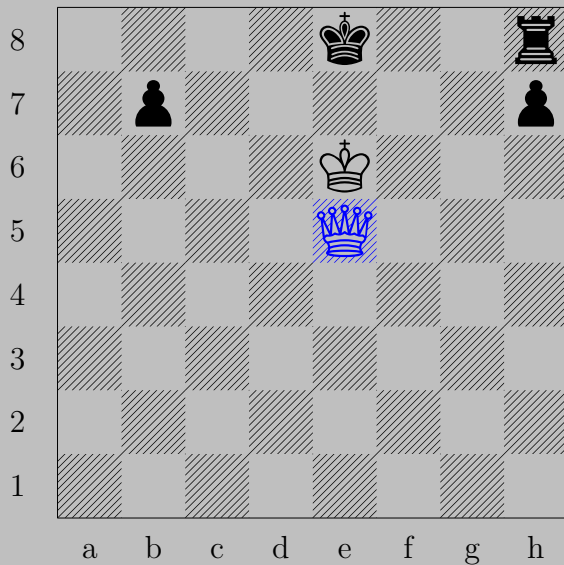
$\triangleleft a7$

2894



W. Speckmann, 1962

2894

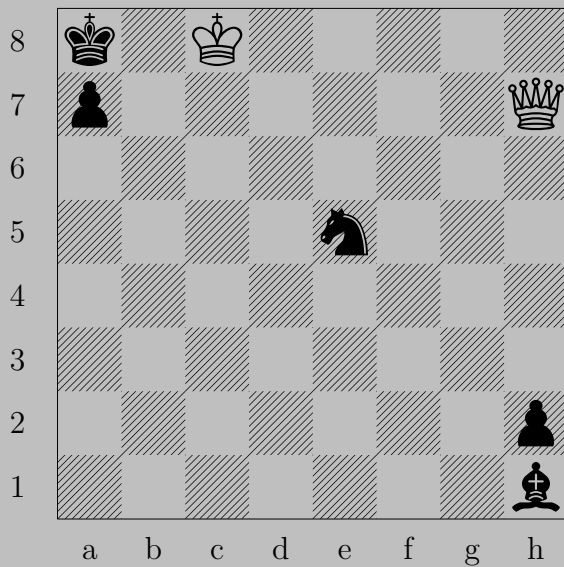


$\text{♕}$ e5

If  $\text{♚}$ d8 or  $\text{♖}$ f8 or  $\text{♗}$ g8,  $\text{♕}$ b8. Otherwise,  $\text{♕}$ xh8.

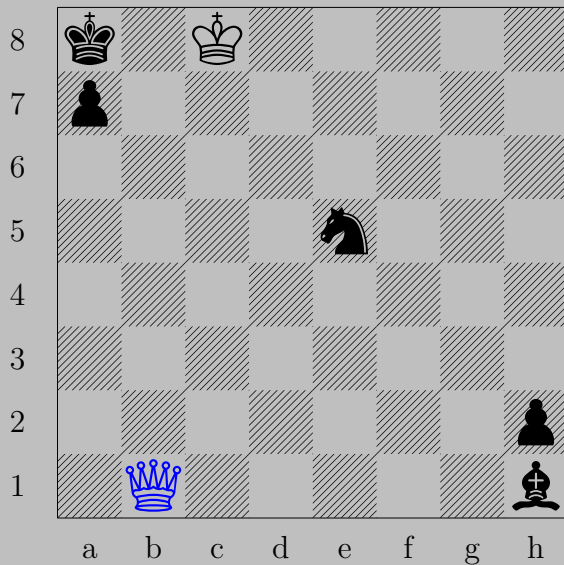
(Note: Black had to move the  $\text{♖}$  or  $\text{♚}$  last turn.)

2895



W. Speckmann, 1982

2895



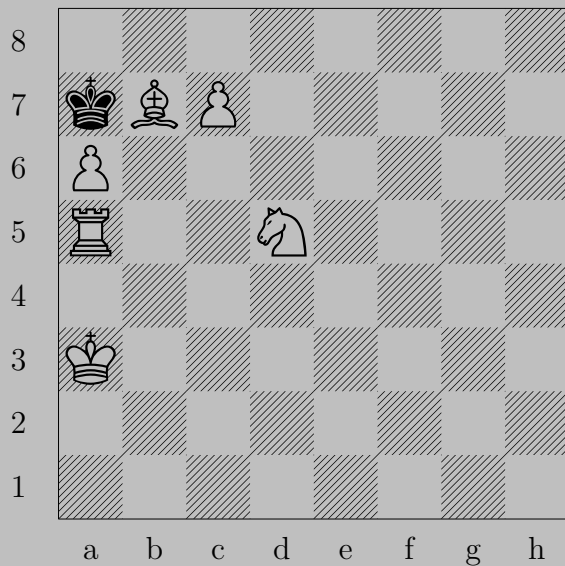
♙b1

If ♘c6, ♙b7. If ♘d7, ♙xh1. If ♘b7, ♙x b7.

Otherwise, ♙b8.



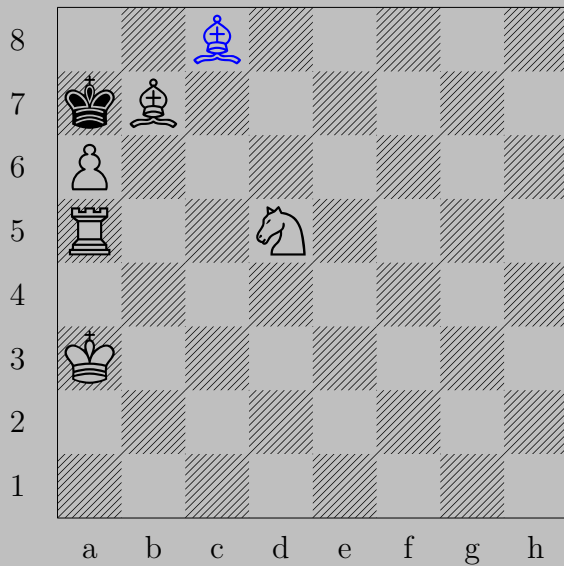
2896



(see [2889](#))

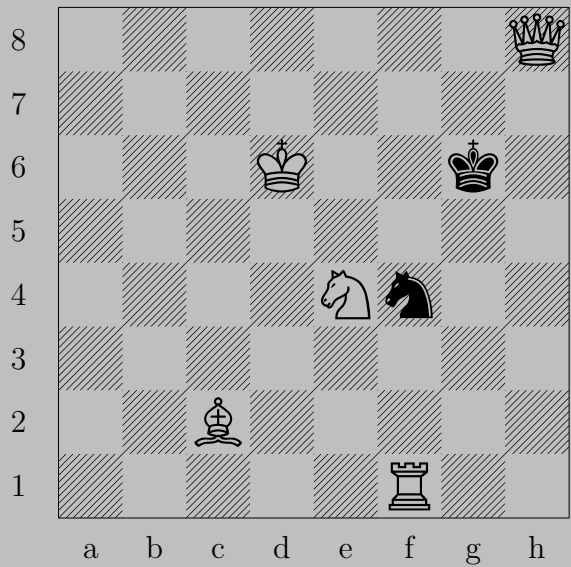
W. Speckmann, 1964

2896



♔c8(♖), ♚b8  
♔a7

2897



W. Speckmann, 1960

2897

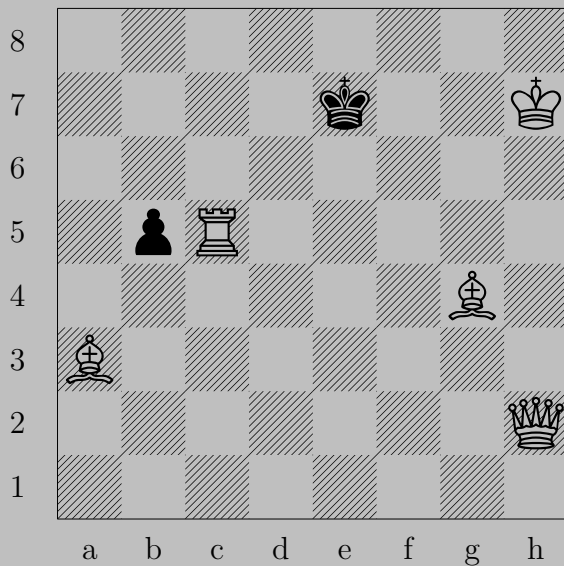


$\text{♗d1}$

If  $\text{♔f5}$ ,  $\text{♚f6}$ . If  $\text{♞e2}$ ,  $\text{♖f6}$ .

If  $\text{♞h5}$ ,  $\text{♙xh5}$ . Otherwise,  $\text{♙h5}$ .

2898



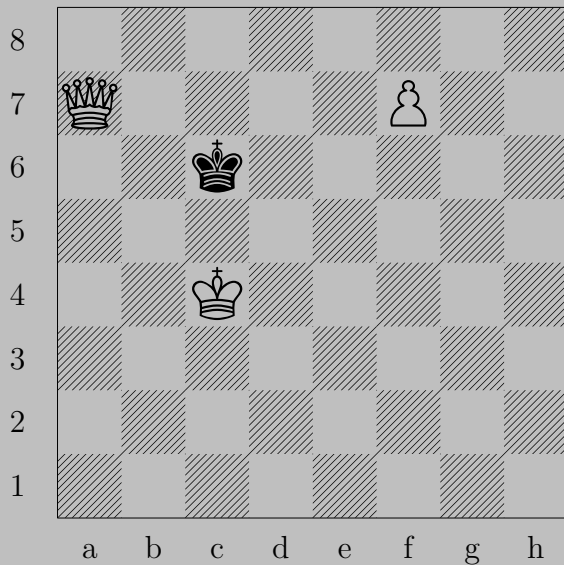
W. Speckmann, 1947



♙e2+

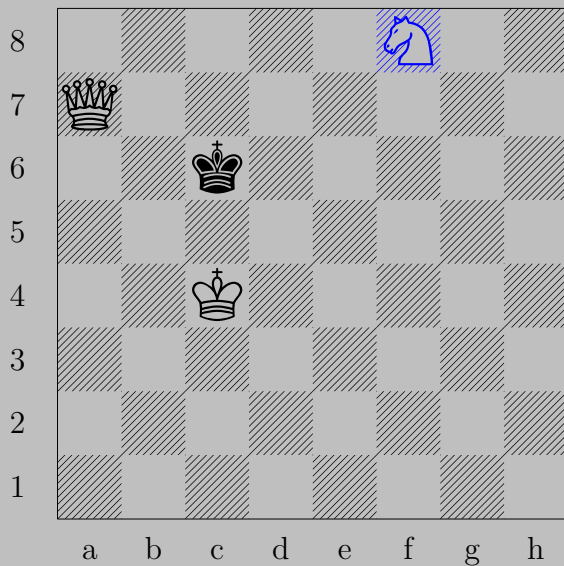
If ♚d6, ♙e5. If ♚d8, ♖c8. If ♜f6-f8, ♗f5.

2899



W. Speckmann, 1963

2899

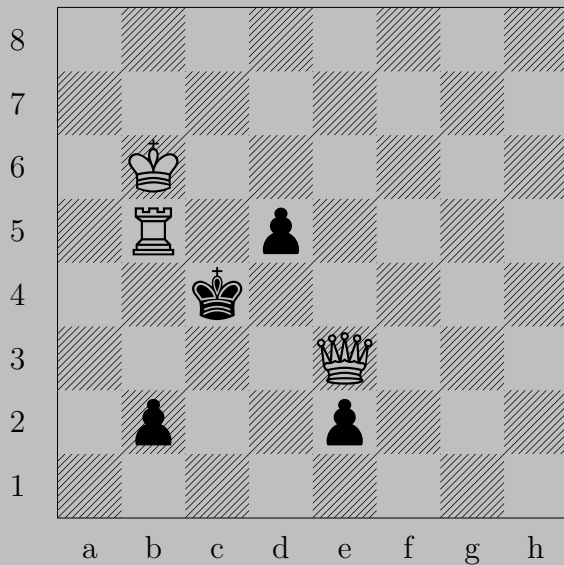


♠f8(♞),♔d6

♚c5

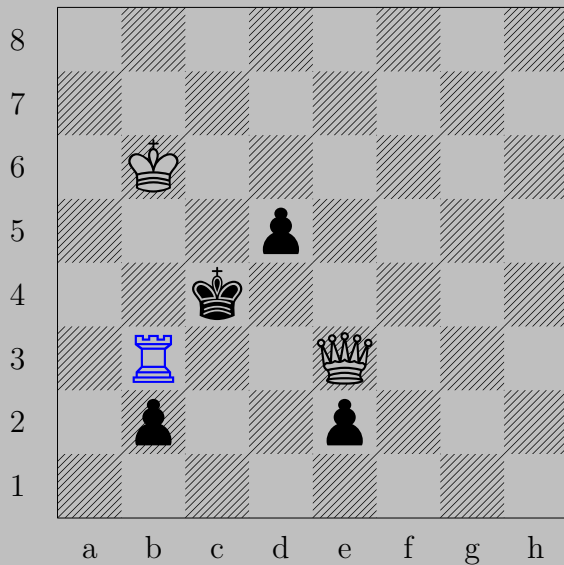


2900



W. Speckmann, 1963

2900



$\text{Rb3}$

If  $\text{Nd6}$ ,  $\text{Qe6}$ . If  $\text{Nb1}(\text{Q})$  or  $\text{Ne1}(\text{N})$ ,  $\text{Qd3}$ . If  $\text{Nb1}(\text{N})$  or  $\text{Ne1}(\text{Q})$ ,  $\text{Qd4}$ .