

Chess Puzzles

2601-2700

Mate in Two

White to Move

László Polgár

Links

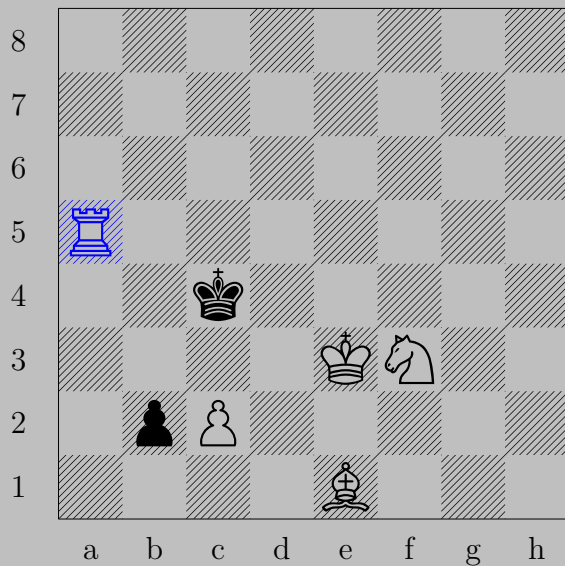
2601	2602	2603	2604	2605	2606	2607	2608	2609	2610
2611	2612	2613	2614	2615	2616	2617	2618	2619	2620
2621	2622	2623	2624	2625	2626	2627	2628	2629	2630
2631	2632	2633	2634	2635	2636	2637	2638	2639	2640
2641	2642	2643	2644	2645	2646	2647	2648	2649	2650
2651	2652	2653	2654	2655	2656	2657	2658	2659	2660
2661	2662	2663	2664	2665	2666	2667	2668	2669	2670
2671	2672	2673	2674	2675	2676	2677	2678	2679	2680
2681	2682	2683	2684	2685	2686	2687	2688	2689	2690
2691	2692	2693	2694	2695	2696	2697	2698	2699	2700

2601



B. Pustovoy, 1972

2601



♖a5, ♘b1(anything)

♞e5

2602



B. Pustovoy, 1972

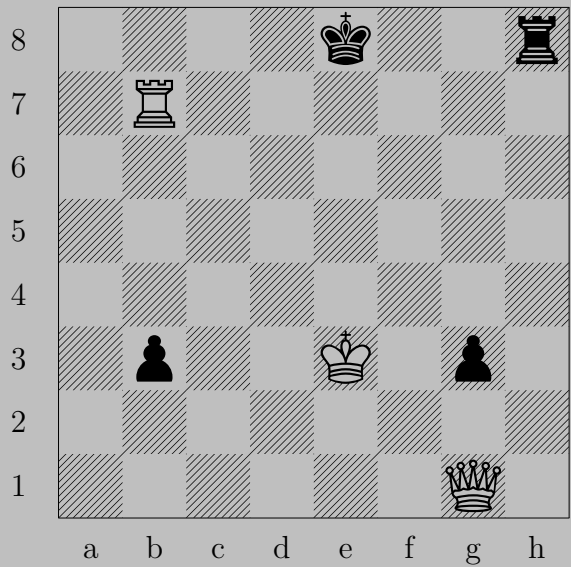
2602



♖a5, ♕a1(anything)

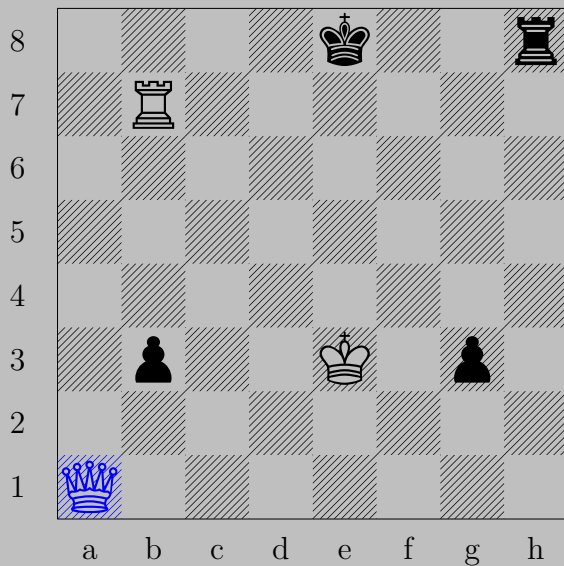
♞d2

2603



B. Pustovoy, 1971

2603

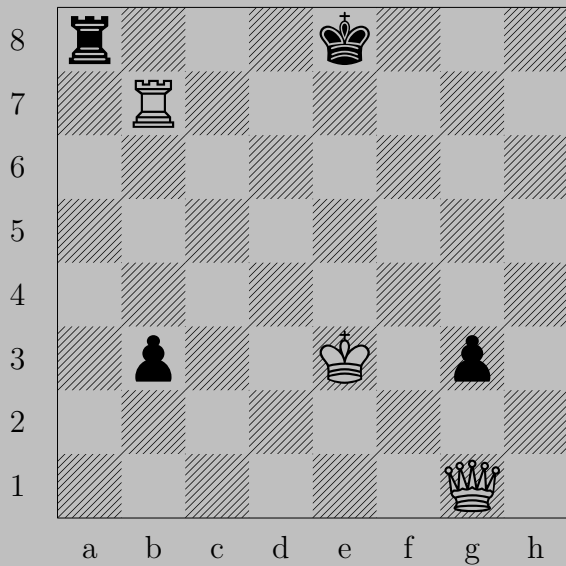


♔a1

If O-O, ♖g7.

Otherwise, ♖a8.

2604



B. Pustovoy, 1971

2604

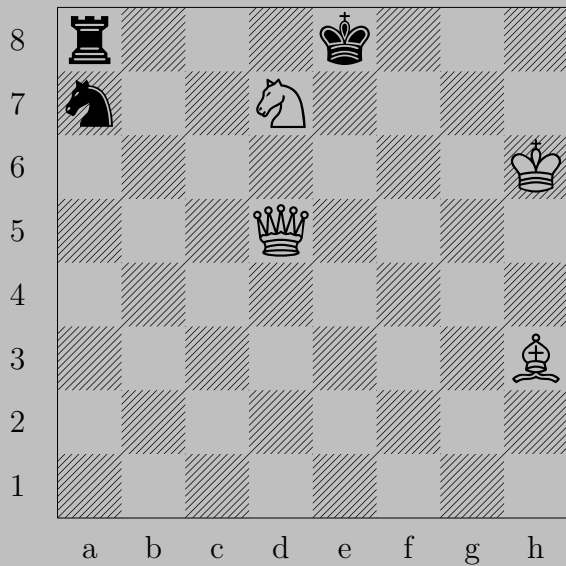


♔h1.

If O-O-O, ♖c6.

Otherwise, ♖h8.

2605



B. Pustovoy, 1971

2605

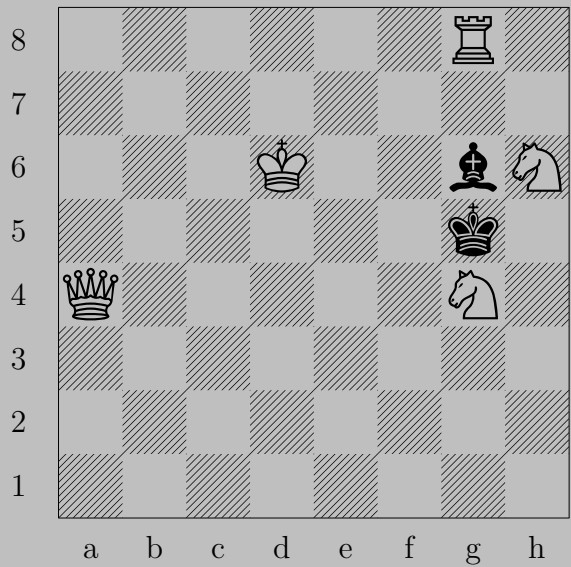


♙d6

If O-O-O, ♚b8. If ♙d8, ♘f6. If ♙f7, ♚e6.

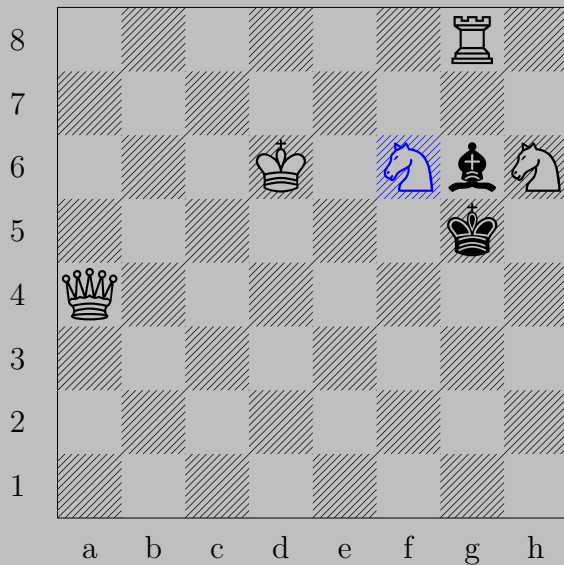
Otherwise, ♚f8.

2606



B. Pustovoy, 1969

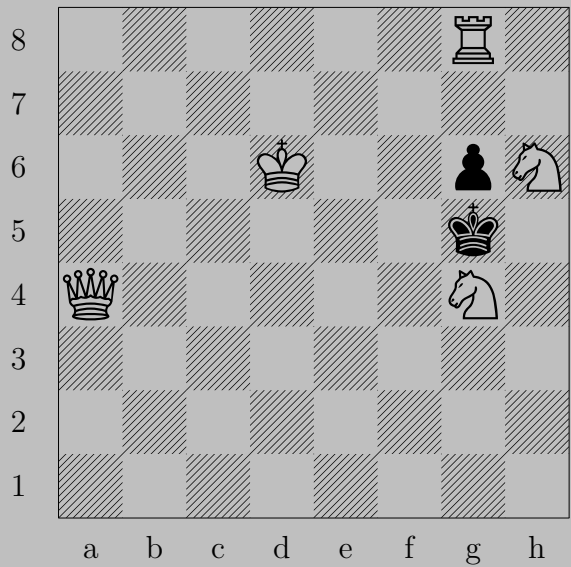
2606



Nf6

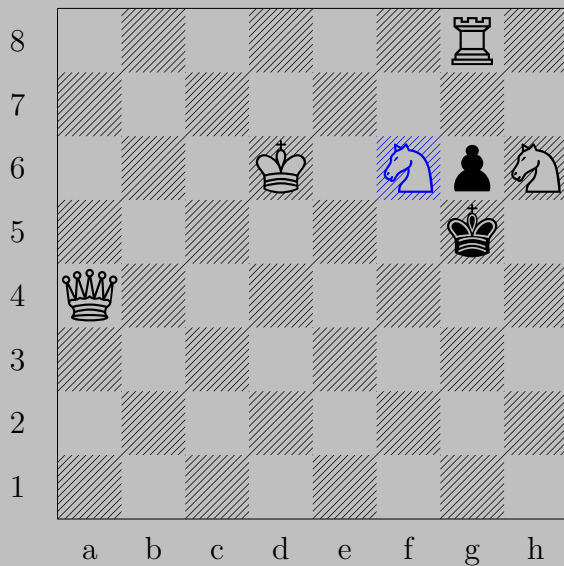
If Kx6 , Qh4 . If Kxh6 , Qf4 .

2607



B. Pustovoy, 1969

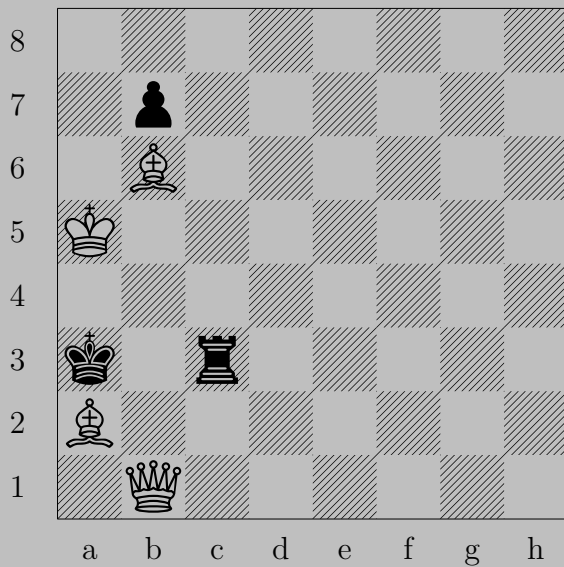
2607



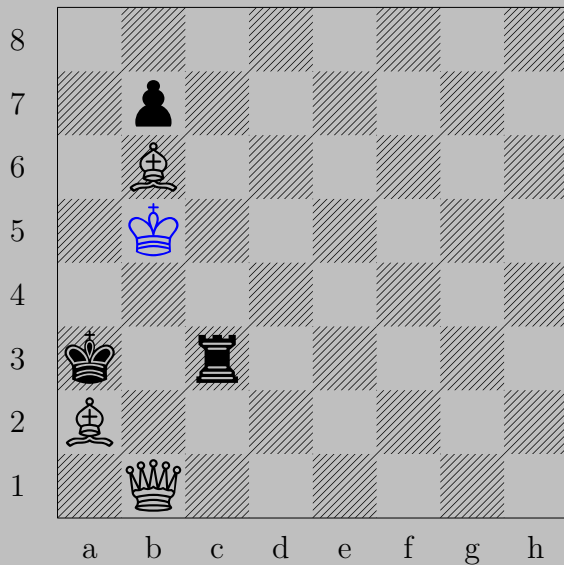
f6

If xh6, f4. If xh6, h4.

2608



B. Pustovoy, 1969

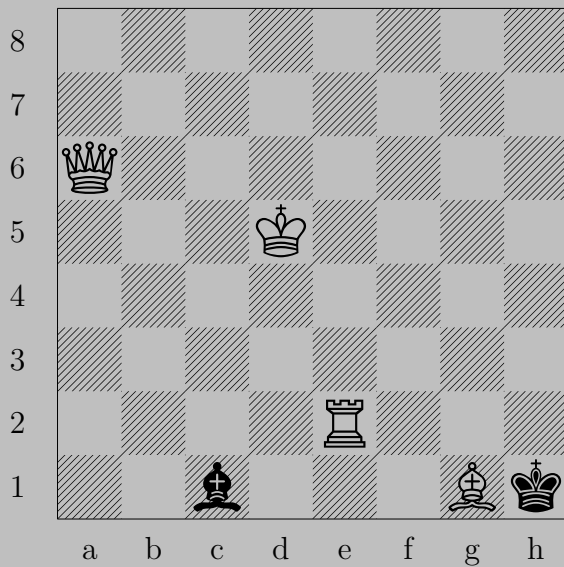


♔b5

If ♖c5+, ♙xc5. If ♖b3+, ♙xb3. If ♖d3-h3, ♙c5.

Otherwise, ♙b3.

2609



B. Pustovoy, 1969

2609

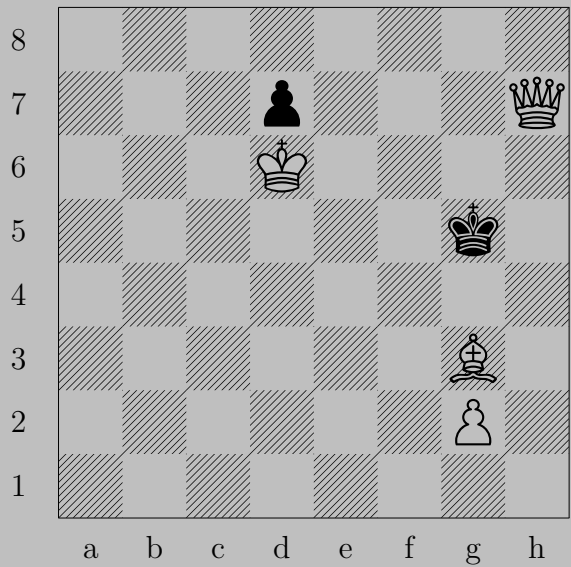


♔a1

If ♔×g1, ♔×c1. If ♘f4, ♘e3.

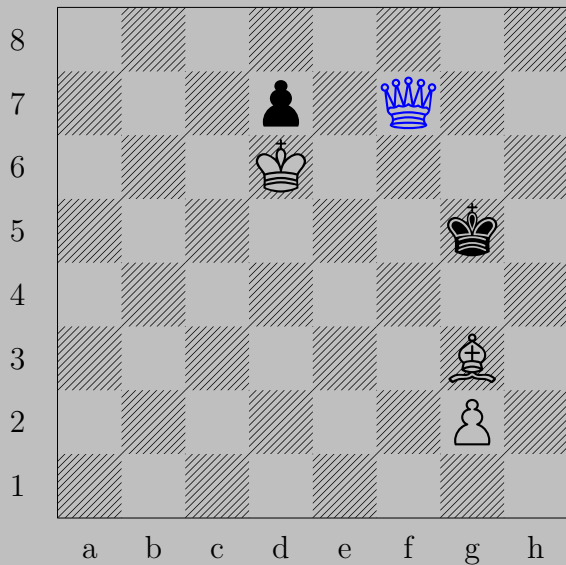
Otherwise, ♖h2.

2610



B. Pustovoy, 1966

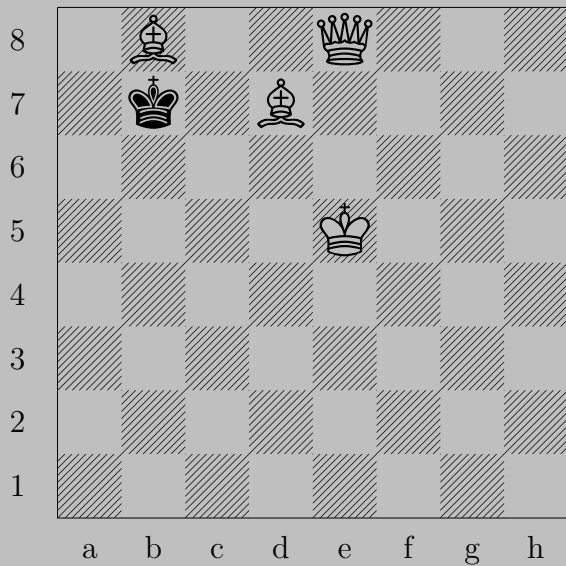
2610



♙f7

If ♔g4, ♚g6. If ♔h6, ♘f4.

2611



B. Pustovoy, 1963

2611



♗a4

If ♔a8, ♗c6. If ♔a6 or ♔b6, ♚b5.

2612



B. Pustovoy, 1964

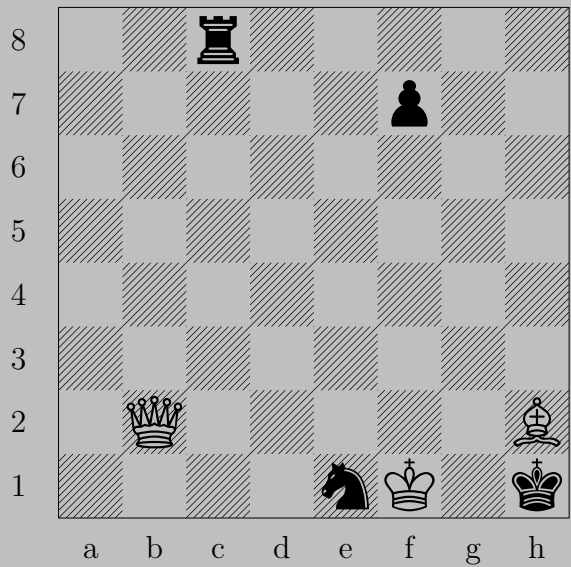
2612



♔f5

If ♖g6+, ♖×g6. If ♖g5, ♖×g6 *en passant*. If ♔h6, ♚h8.

2613

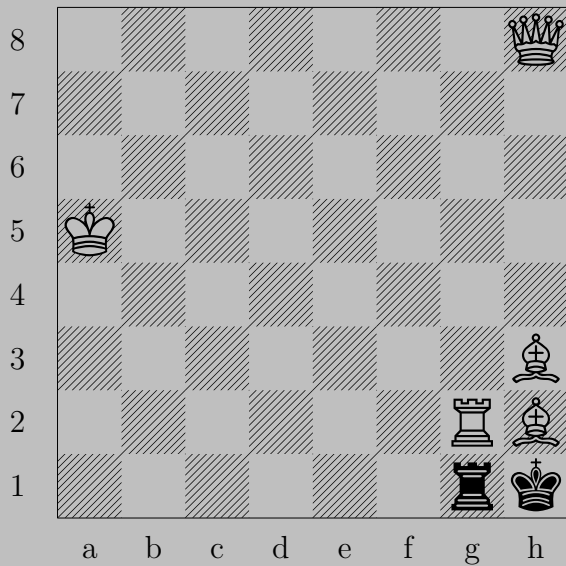


A. Ragainis, 1934



♙c7
 If ♖xc7 , ♚h8 . If ♖h8 , ♚xh8 . If ♘c2 , ♚b7 . If ♘f3 , ♚g2 . If ♘g2 , ♚xg2 .
 Otherwise, ♚h2 .

2614

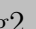


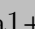




B. Restad, 1028

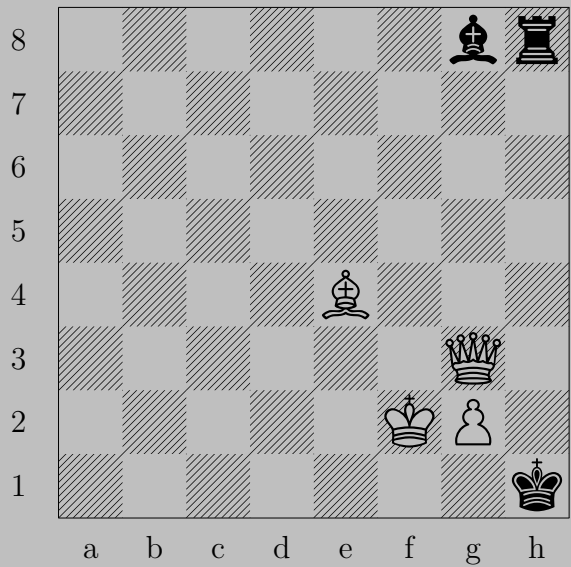
2614



a8

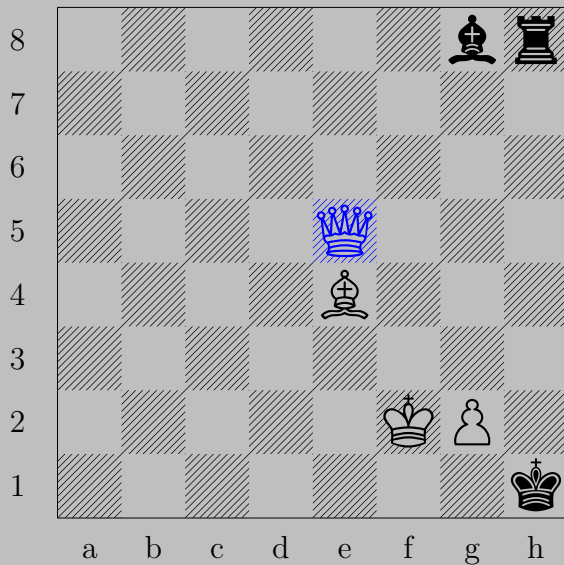
If xg2, xg2. If a1+, a2. If b1, b2. etc.

2615



B. Restad, 1029

2615

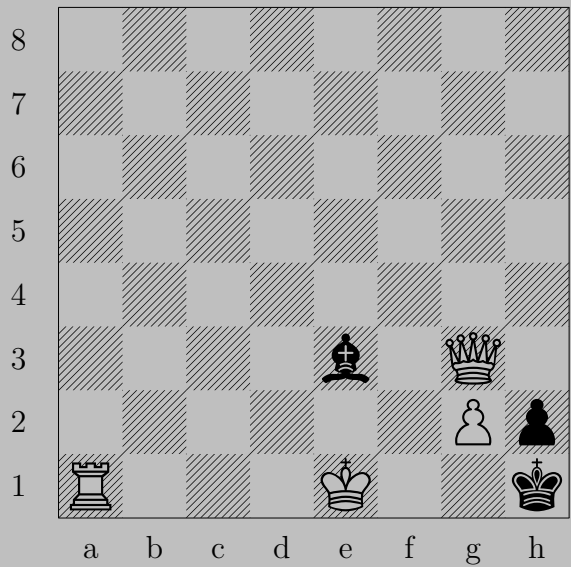


♙e5

If ♘h7, ♙h5. If ♘d5, ♙xh8. If ♖h2, ♙a1. If ♖h3, ♙xh3.

Otherwise, ♙g4.

2616



J. Rice, 1992

2616

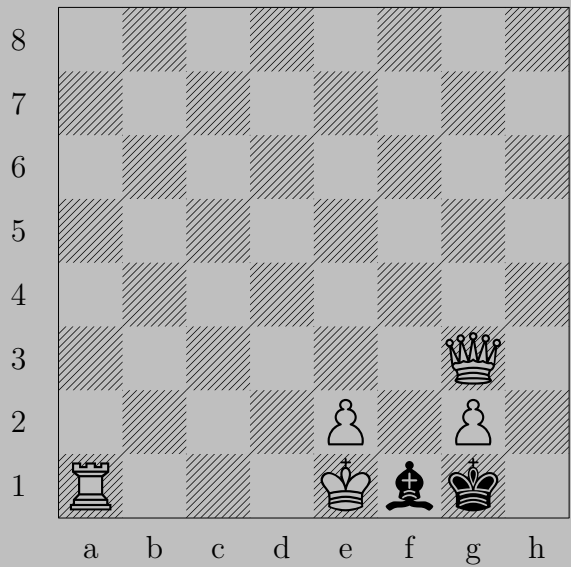


♙f2

If ♘xf2+, ♙xf2. If ♘d2+, ♙xd2. If ♘d4-a7, O-O-O.

Otherwise, ♙f1.

2617



J. Rice, 1992

2617

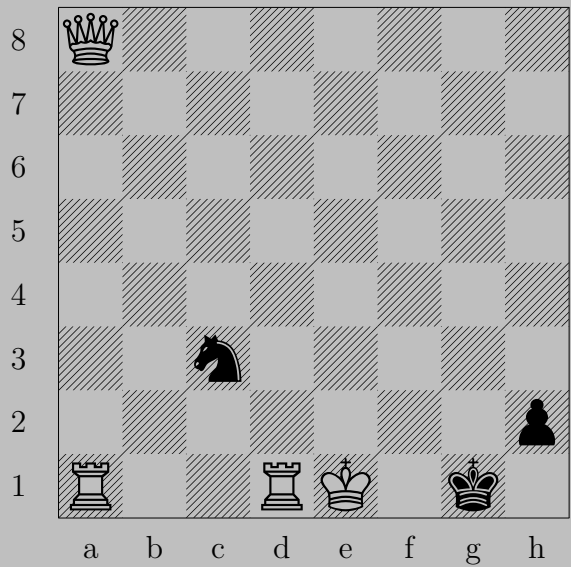


♔d2, ♔h1

♖x f1

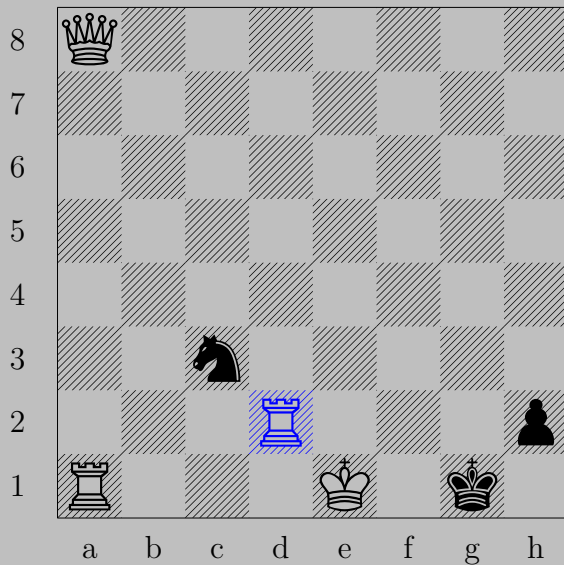
(Hint: How could a black bishop wind up there?)

2618



J. Rice, 1992

2618

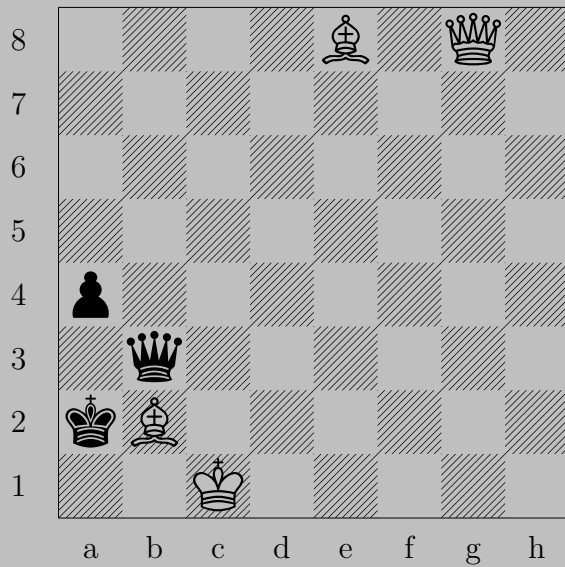


Rd2

If $\Delta h1(\text{K})$, Ka7 . If Ne2 , Kxe2 .

Otherwise, Kg2 .

2619



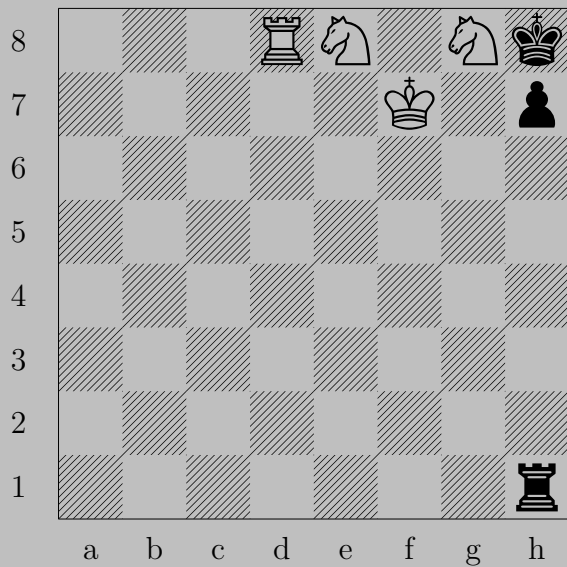
J. Rice, 1989



♞f7

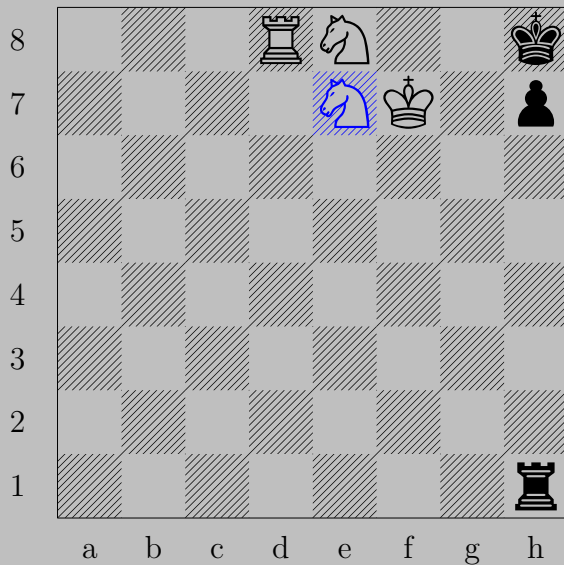
If ♞xf7 , ♞xf7 . If ♞c4-e6 or ♞a3 , ♞x♞ .

2620



J. Rice, 1982

2620

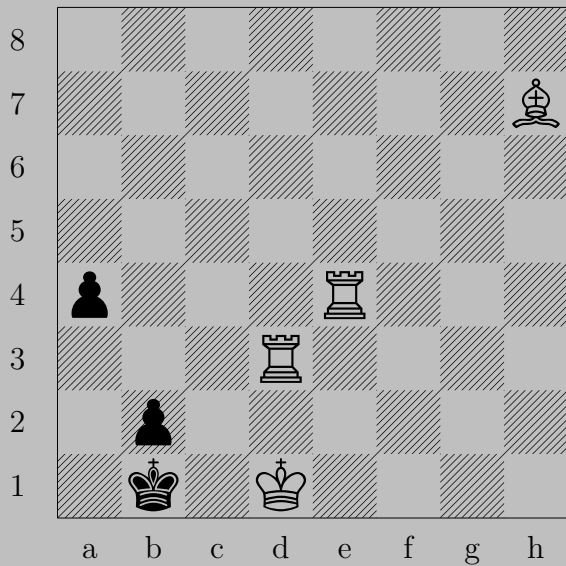


♞e7 .

If ♜d1 , ♞d6 . If ♜g1 , ♞g7 .

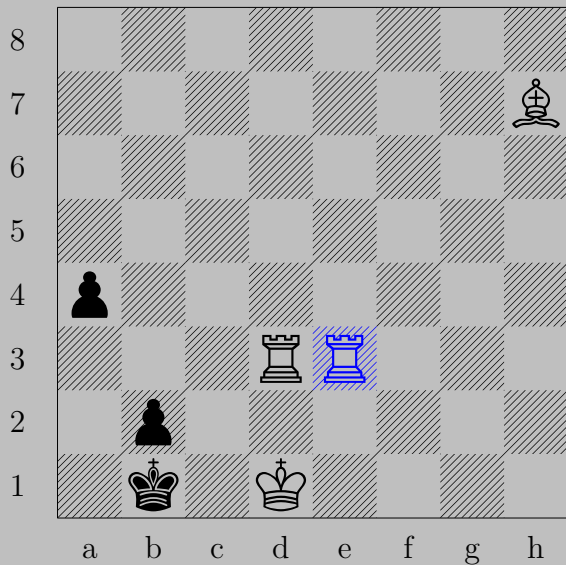
Otherwise, ♞f6 .

2621



J. Rice, 1982

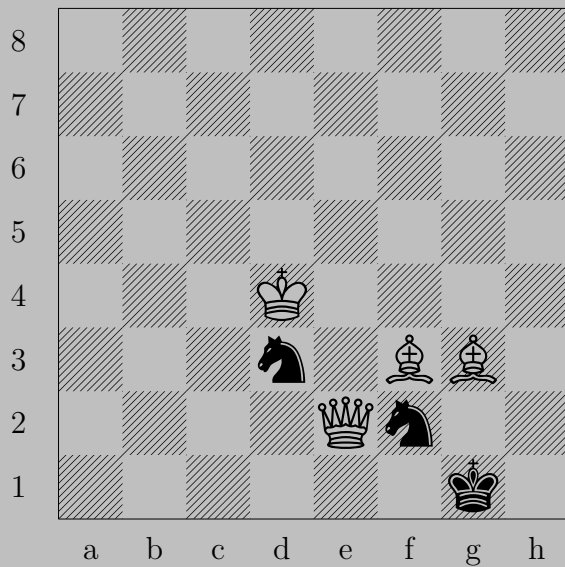
2621



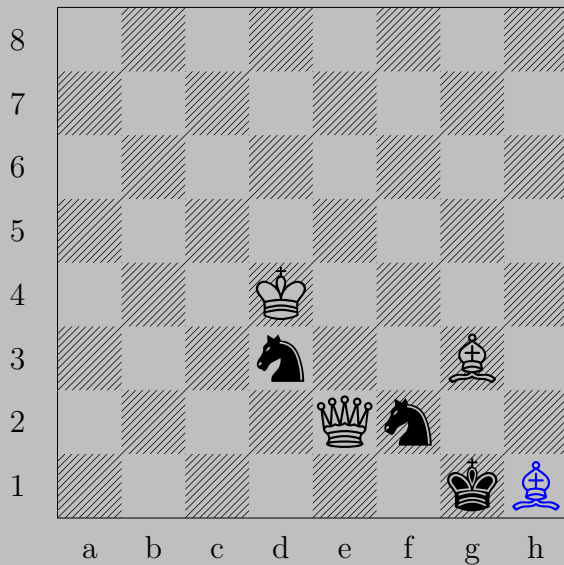
♖(e4)e3

If ♘a3, ♖xa3. If ♔a1 or ♔a2, ♖a3.

2622



F. Richter, 1933

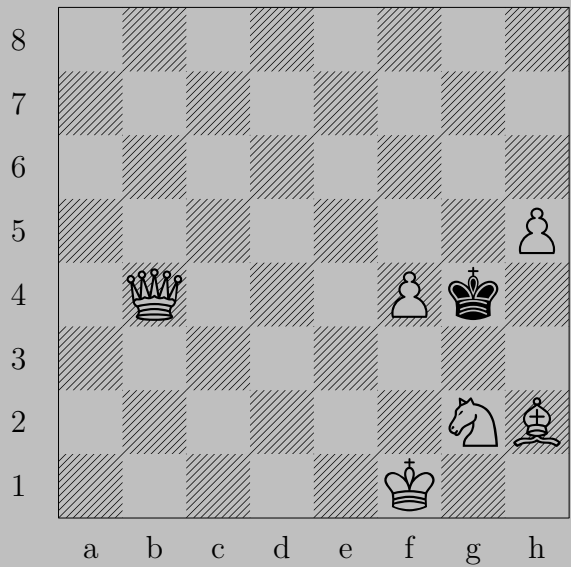


♔h1

If $\text{♔}\times\text{h1}$, ♚f1 . If $\text{♞}\times\text{h1}$, ♕h2 . If ♞d1 or ♞e4 or ♞g4 or ♞h3 , ♚g2 .

If ♞e1 , $\text{♚}\times\text{e1}$. Otherwise, ♚e1 .

2623



L. Riczu, 1969

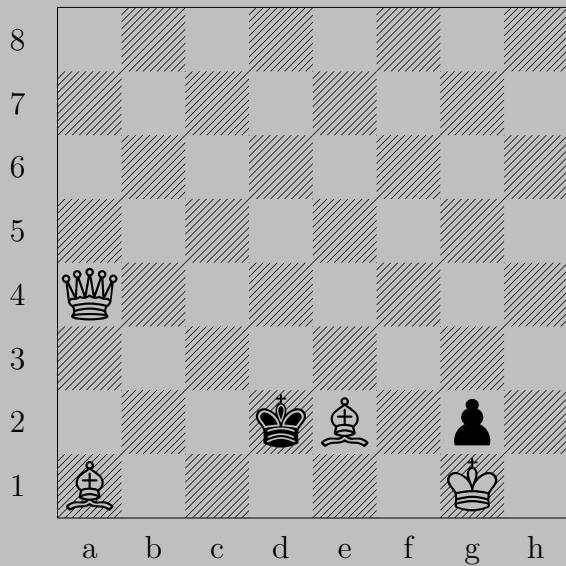
2623



♙e7

If ♙xh5, ♙g5. If ♙f5, ♘e3. If ♙f3, ♙e2. If ♙h3, ♙h4.

2624



L. Riczu, 1969

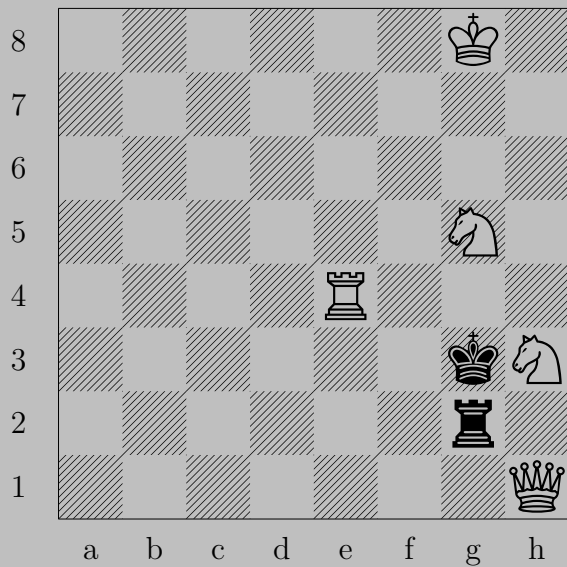
2624



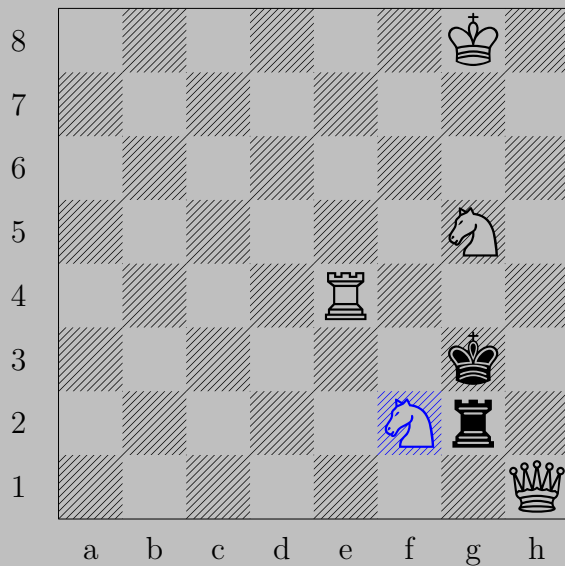
♗d1

If ♔c1 , ♚c2 . If ♔d3 or ♔e3 , ♚d4 . If ♔e1 , ♗c3 .

2625



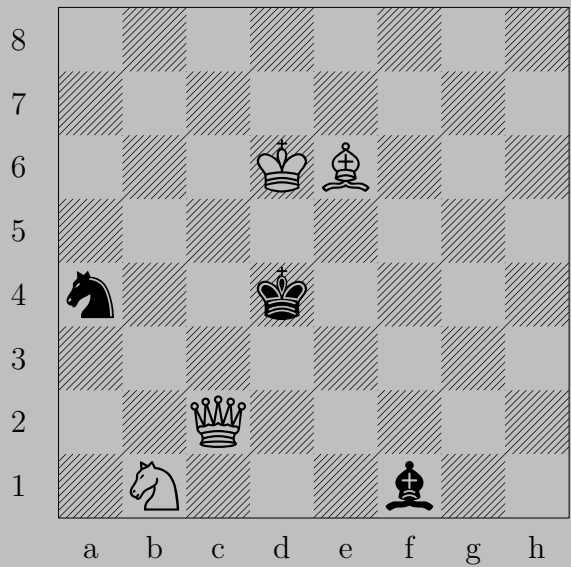
M. Ritchings, 1988



f2

If x f2, e1. If x f2, h3. If h2, f3. If g1, xg1.

2626



M. Ritchings, 1988



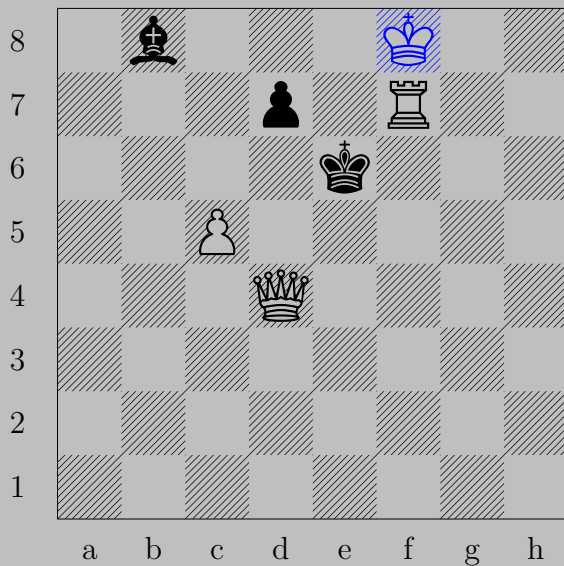
♕d5

If ♔e3 or ♕g2, ♚d2. If ♕d3, ♚f2. If ♞c5, ♚c3. If ♞c3, ♚xc3.
 Otherwise, ♚e3.

2627



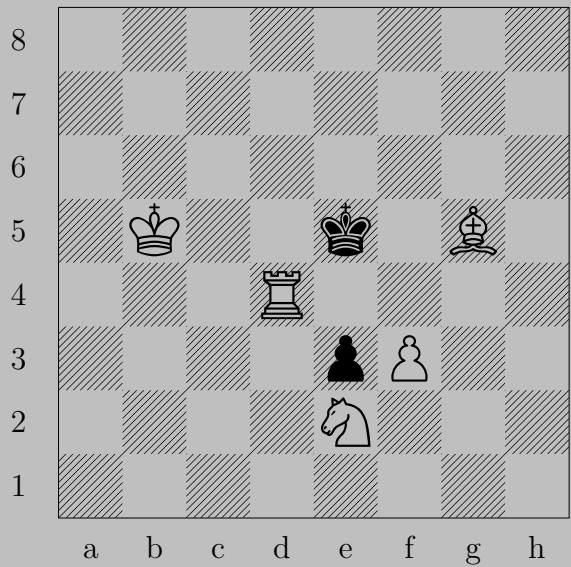
J. Roosendaal, 1990



♔f8

If ♕d6+, ♖×d6. If ♕e5, ♖×d7. If ♗d6, ♗e4. If ♗d5, ♗f6.
Otherwise, ♖f6.

2628



J. Ropelt, 1902

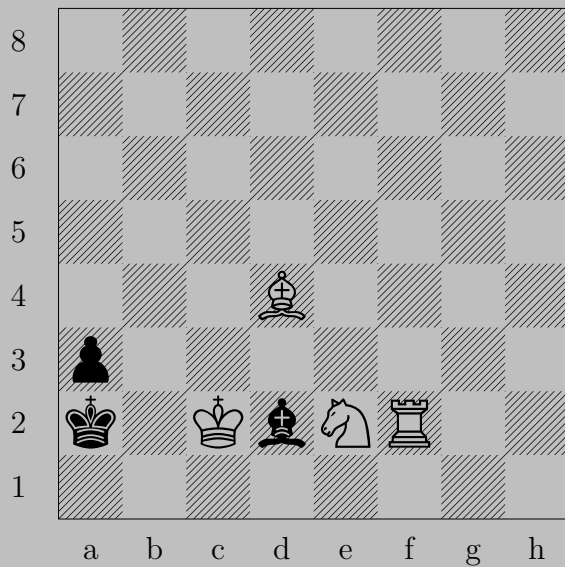
2628



Nf4

If $\text{K} \times \text{d4}$, Bf6 . If Kf5 or Pe2 , Rd5 .

2629



J. Rosenhouse, 1992

2629

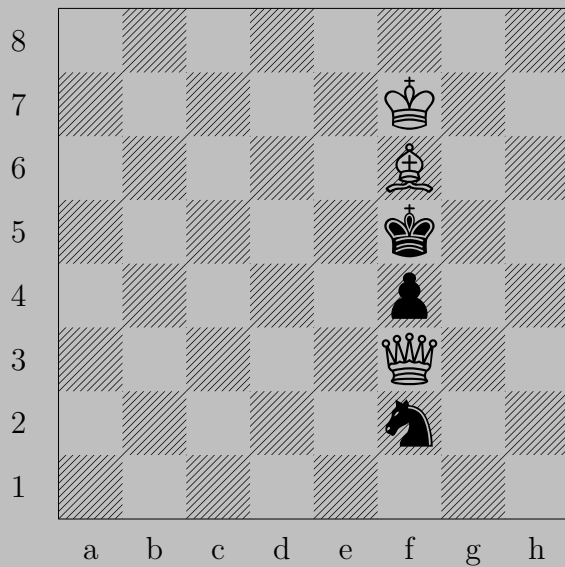


Rf1

If Ke1 , Nc1 . If Kc1 , Nxc1 . If Kc3 , Nxc3 .

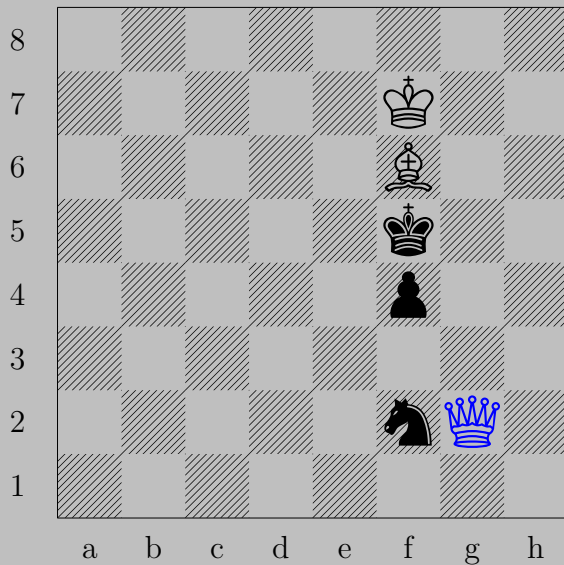
Otherwise, Ra1 .

2630



M. Rosenhal, 1967

2630

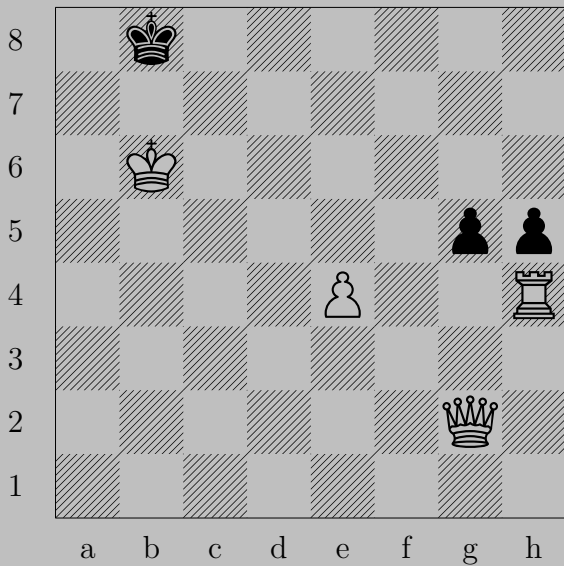


♔g2

If ♘g4, ♕c2. If ♙f3, ♕xf3.

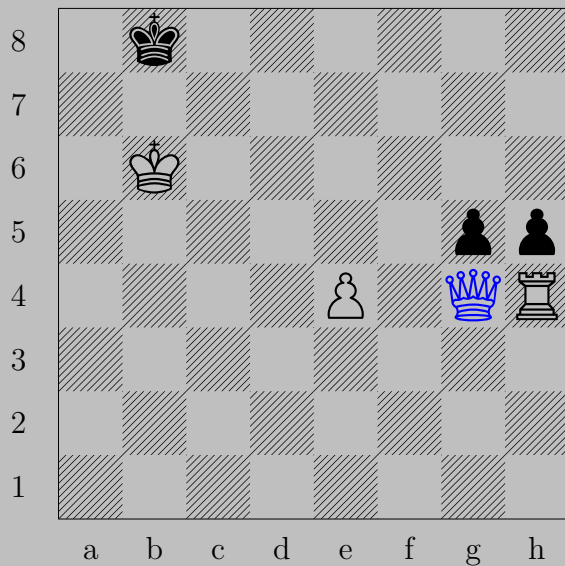
Otherwise, ♕g6.

2631



S. Rpthwell, 1991

2631



♙g4

If ♖xg4, ♖h8. If ♖xh4, ♙g8. If ♙a8, ♙c8.

2632



C. A. H. Russ, 1949

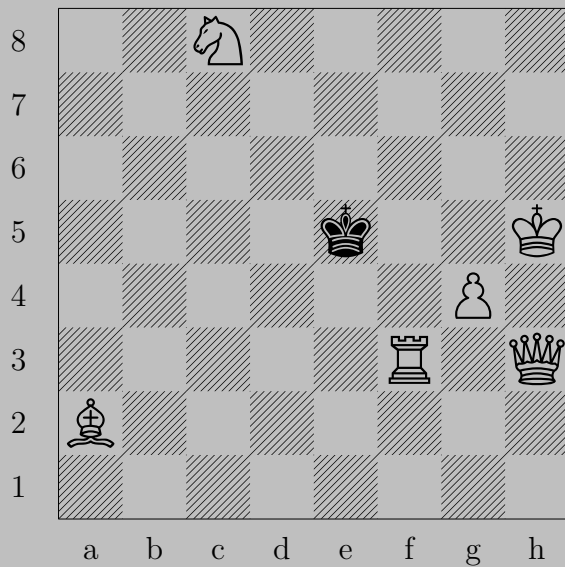
2632



♗a6

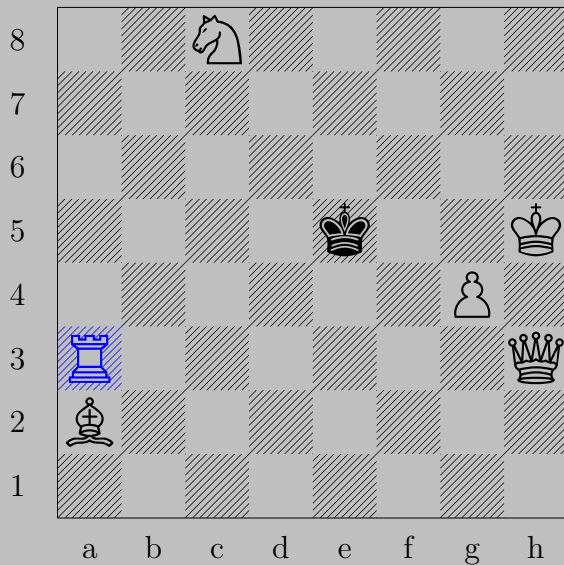
If ♔a5, ♚b5. If ♔c5-c7, ♚d6.

2633



F. Sockmann, 1909

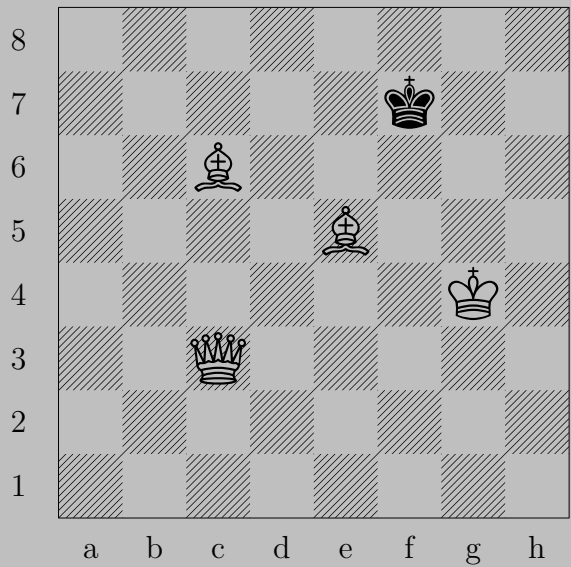
2633



♖a3

If ♔d4-f4 , ♚e3 . If ♔f6 , ♚c3 .

2634



K. Sampaskoski, 1977

2634



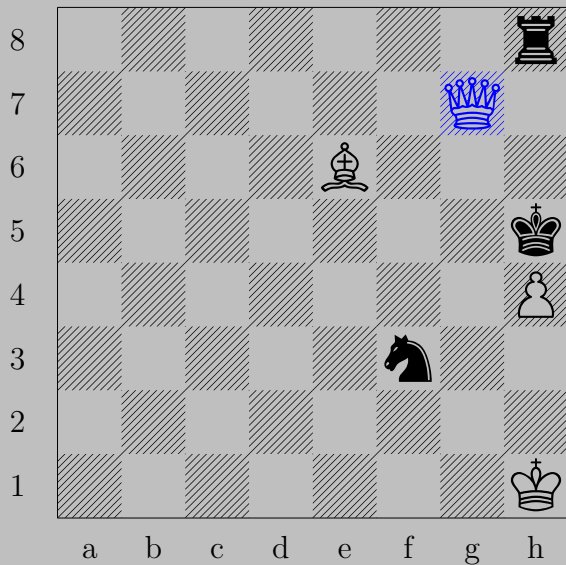
♗h8

If ♔e6 or ♔e7 , ♚f6 . If ♔f8 or ♔g8 or ♔g6 , ♚g7 .

2635



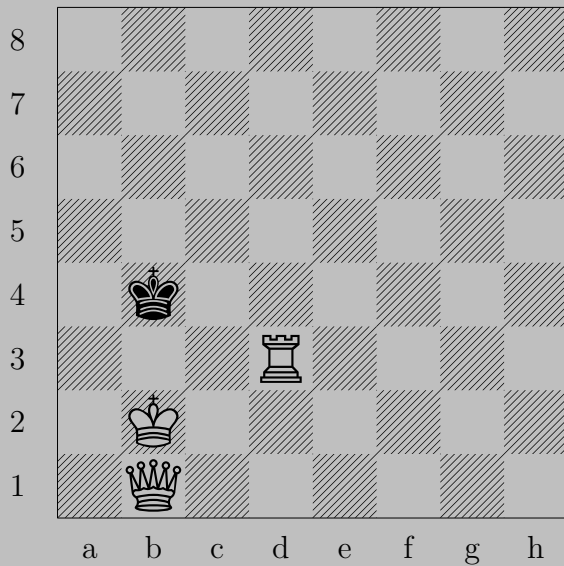
B. Salkind, 1907



♙g7

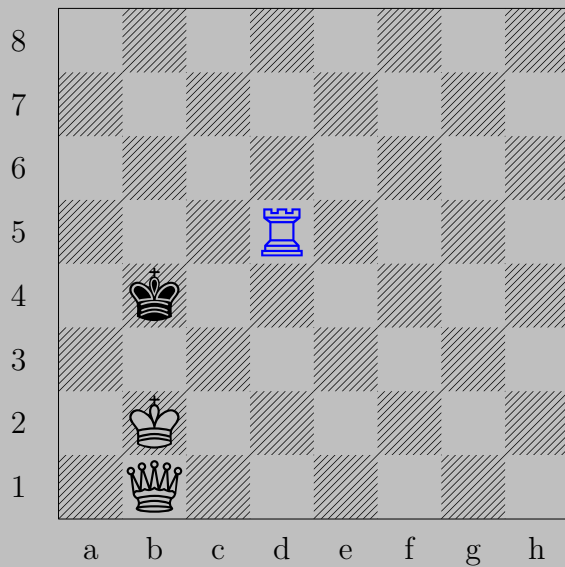
If ♙×h4 or ♖h6, ♙g4. If ♘×h4, ♙g4. If ♖a8-g8, ♙h7. If ♖h7, ♙×h7.
 If ♘g5, ♙×g5. Otherwise, ♙g5.

2636



B. Sallay - T. Kandos, 1986

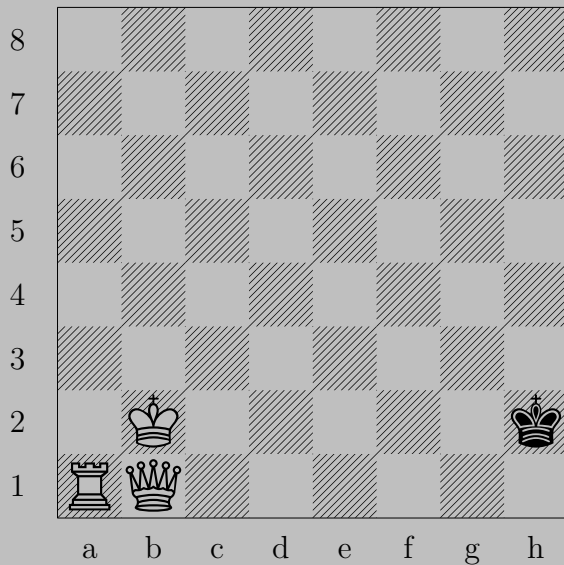
2636



♖d5, ♔a4 or ♔c4

♕e4

2637



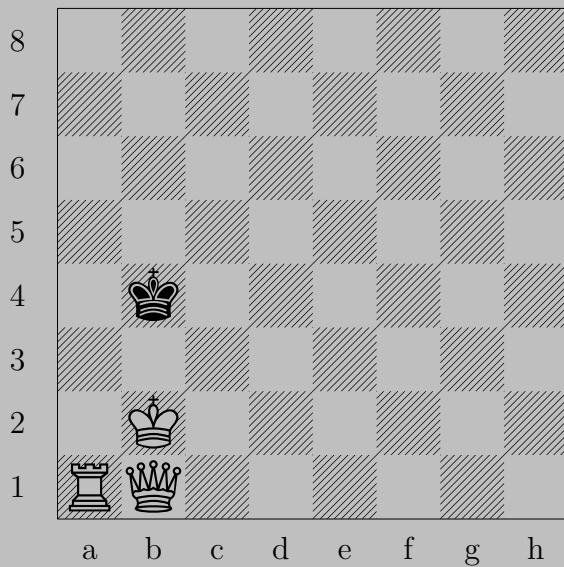
B. Sallay - T. Kandos, 1986

2637



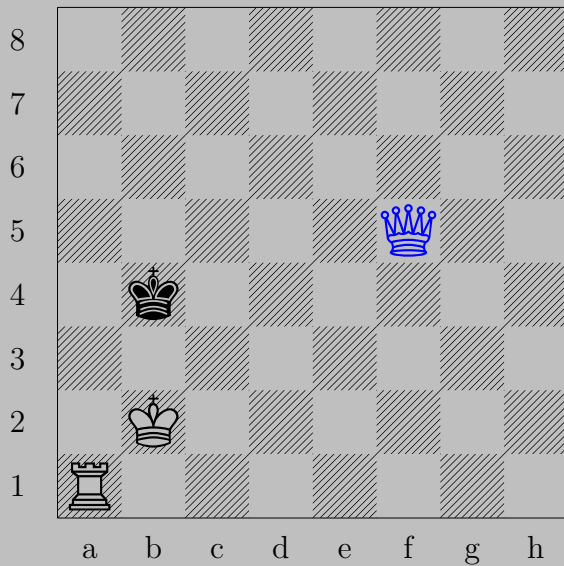
♔g6, ♔h3
♖h1




2638



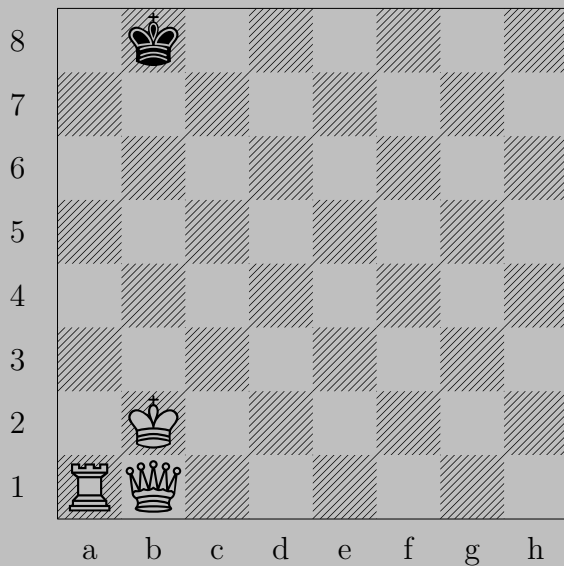
B. Sallay - T. Kandos, 1986

2638



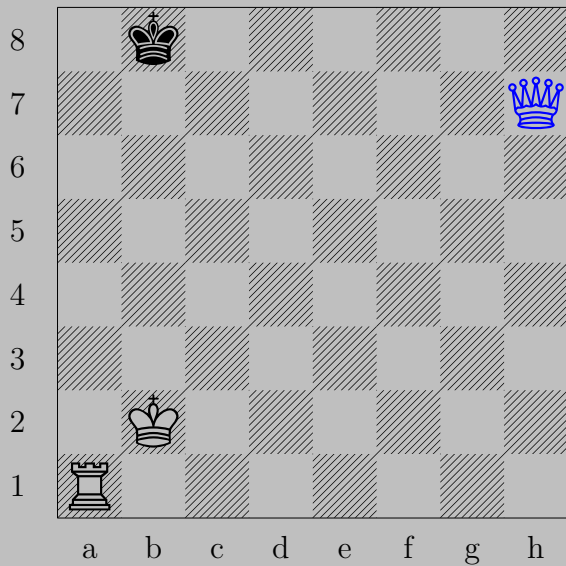
f5, c4
a4

2639



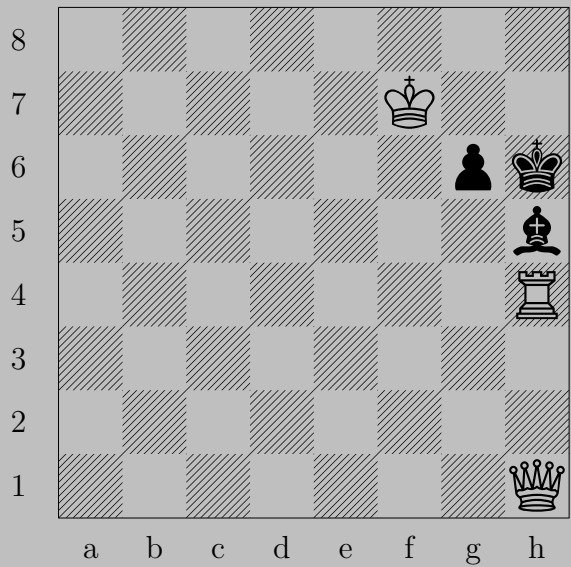
B. Sallay - T. Kandos, 1986

2639



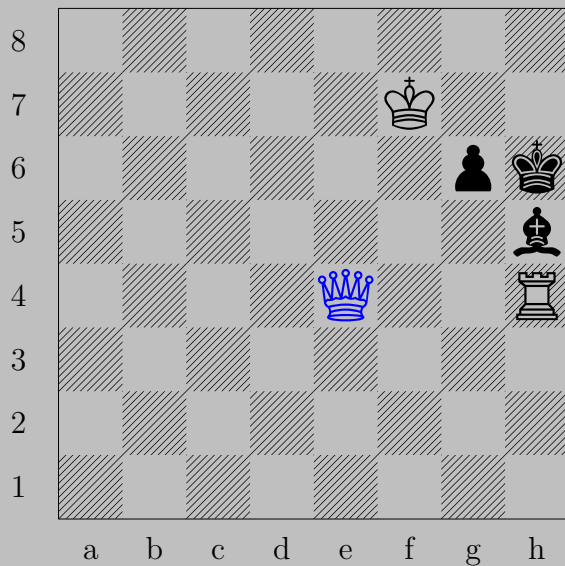
♙h7, ♚c8
♖a8

2640



V. Samilo, 1982

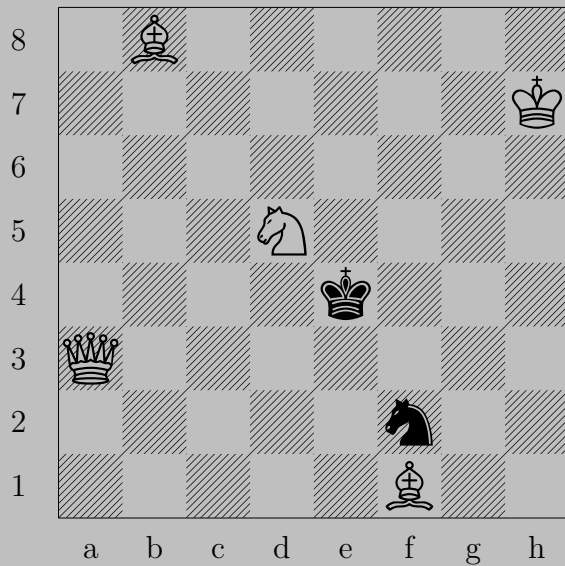
2640



♙e4

If ♜g5, ♙g6. If ♚g5, ♙f4. If ♚h7, ♖xh5.

2641



D. M. Saunders, 1985

2641



♙a6

If ♔xd5 or ♔d4, ♙c4. If ♔f5, ♙g6. If ♔f3, ♙e2.

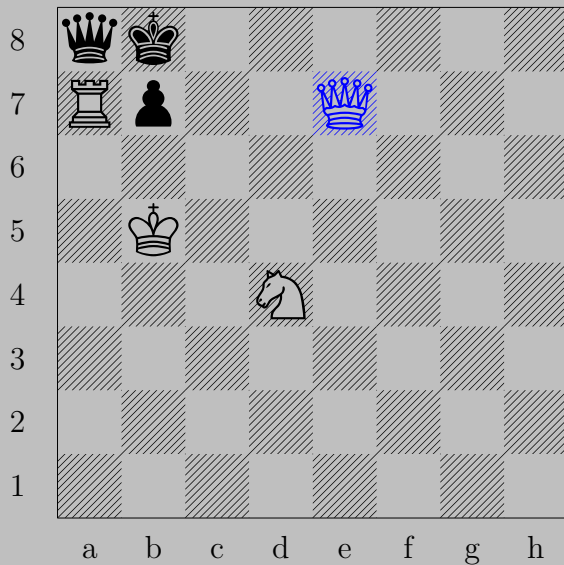
If ♘d3, ♙xd3. Otherwise, ♙d3.

2642



A. D. Savignac, 1925

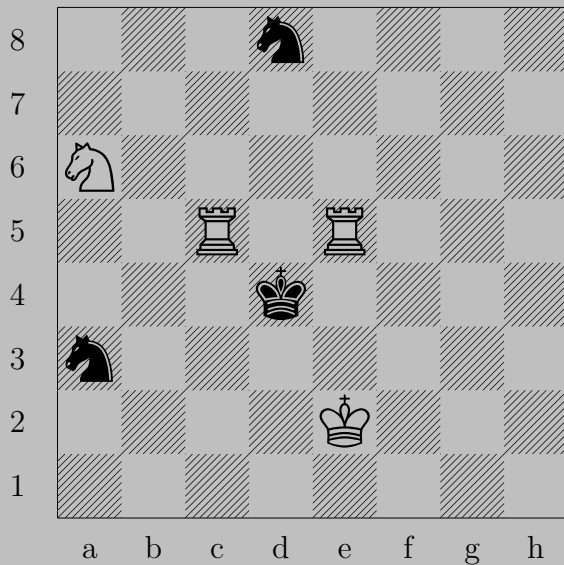
2642



♙e7

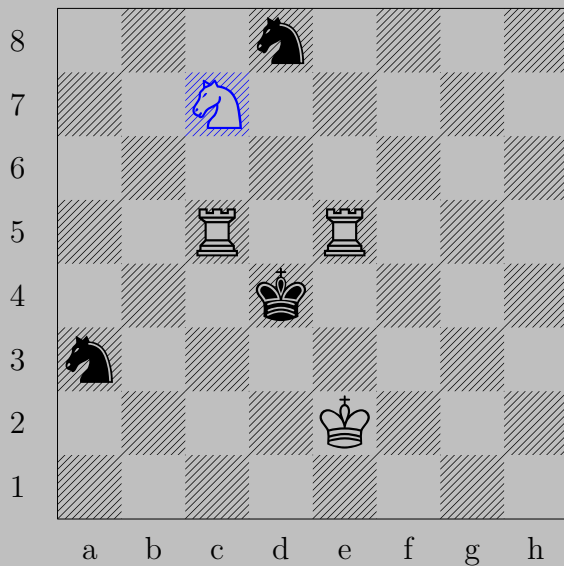
If ♙xa7, ♙d8. If ♔xa7, ♞d6. If ♟b6, ♙c7. If ♔c8, ♖xa8.

2643



V. Sazhin, 1978/81

2643

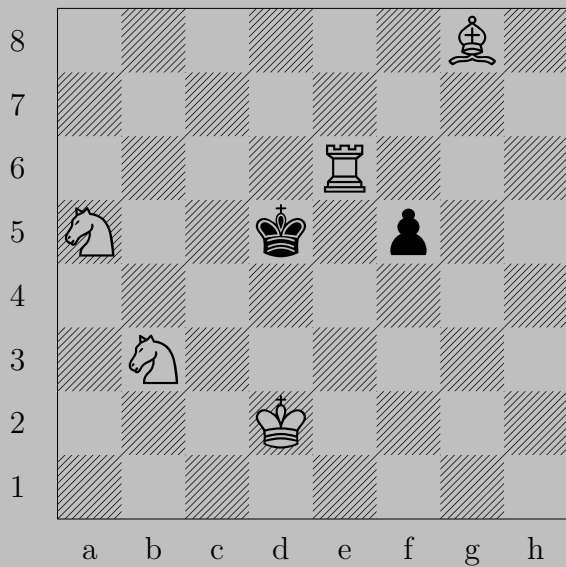


Nc7

If Nc4 or Nc2 or Nb1 , Nb5 . If Nb5 , Nxb5 .

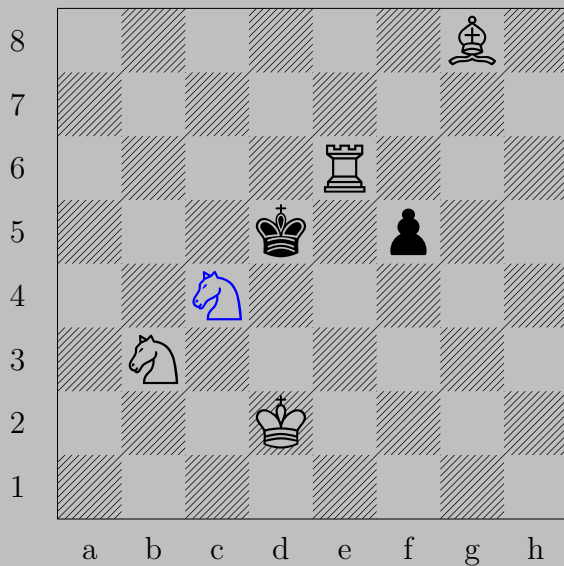
If Nb7 or Nc6 or Nf7 , Ne6 . If Ne6 , Nxe6 .

2644



V. I. Solovyev, 1952

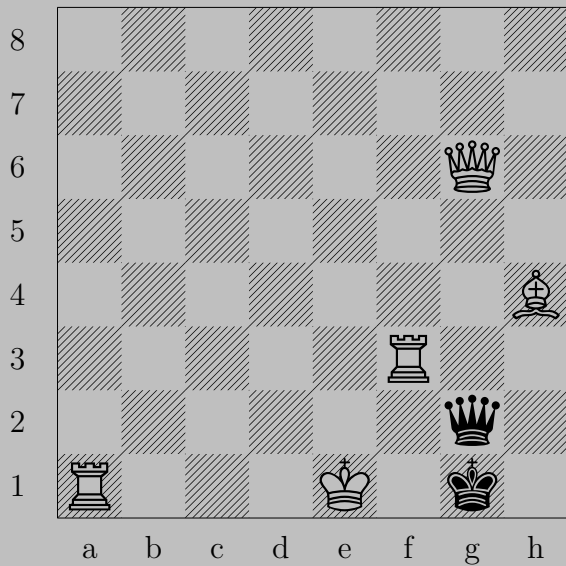
2644



♘c4

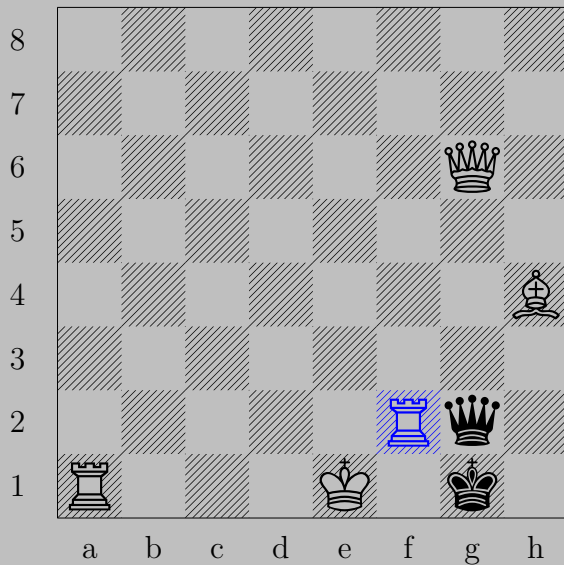
If ♙xc4, ♖b6. If ♜f4, ♘b6.

2645



J. Scheel, 1937

2645



Rf2

If Qxg6 , O-O-O. If Qg5 or Qg3 , Ke2 . If Qg4 , Kd2 .

If Kh1 or Kh2 , Qxg2 .

2646



J. Scheel, 1932

2646

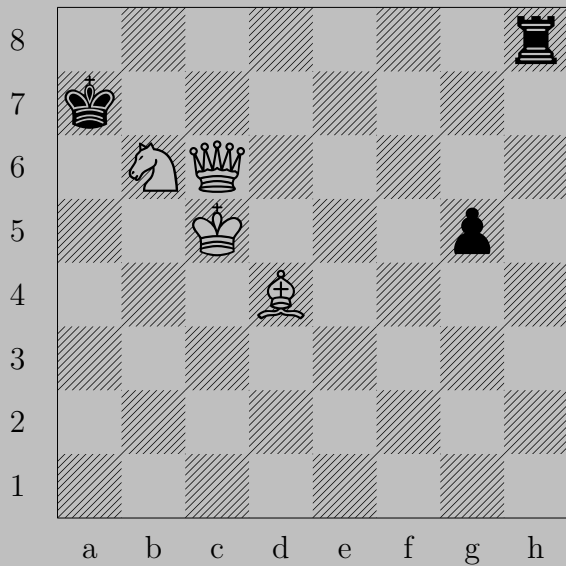


Rh7

If Qxh2, Rxh5. If Ng3, Pxg3.

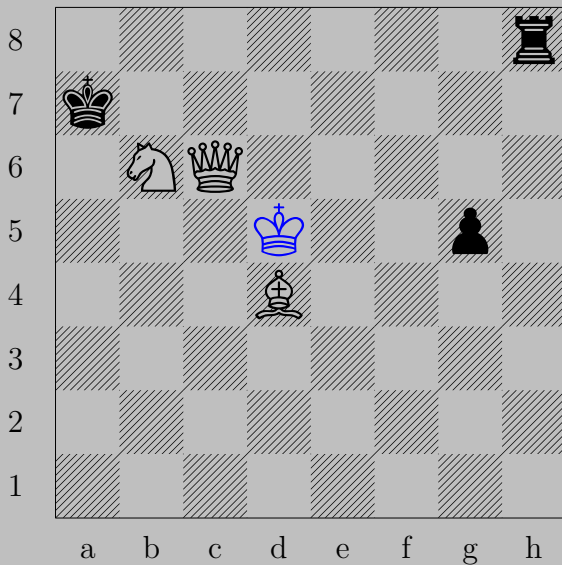
Otherwise, Kc1.

2647



J. Scheel, 1926

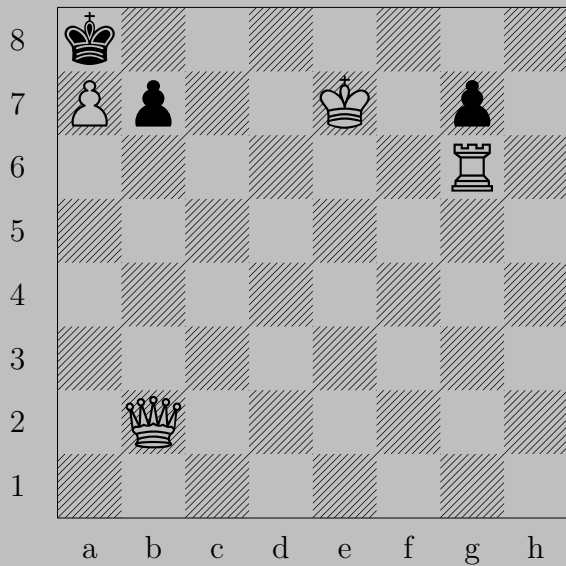
2647



♔d5

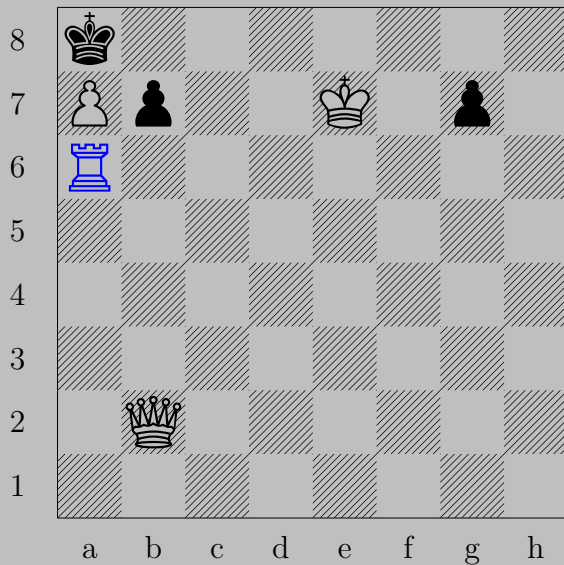
If ♖c8-g8 or ♜g4, ♞d7. If ♜b8, ♞c8. If ♜a8, ♚xa8. If ♜h1-h7, ♚a8.

2648



J. Scheel, 1926

2648



$\text{R}a6$

If $\text{P} \times a8$, $\text{Q}b8$. If $\text{P}b6$ or $\text{P}b5$, $\text{Q}g2$. If $\text{P}g6$ or $\text{P}g5$, $\text{Q}h8$.

2649



J. Scheel, 1936

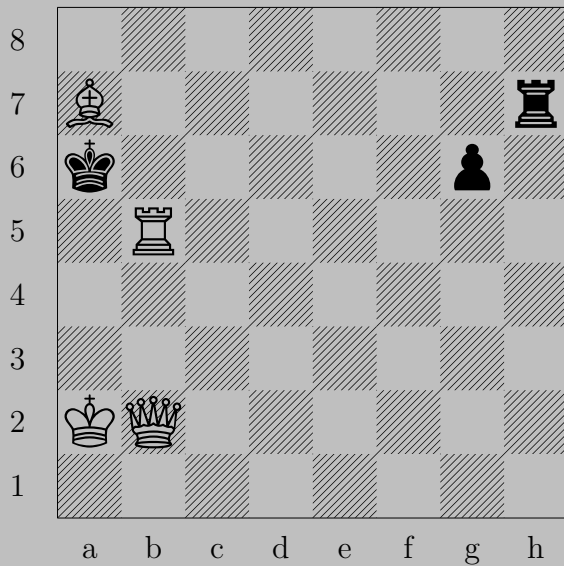
2649



♠d8(♞)

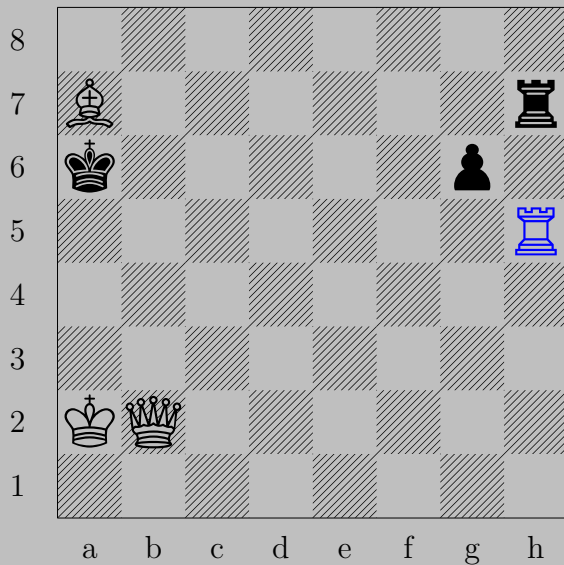
If ♠e5 or ♔g7, ♚f7. If ♙g7 or ♔e5-f5, ♚×e6.

2650



J. Scheel, 1939

2650

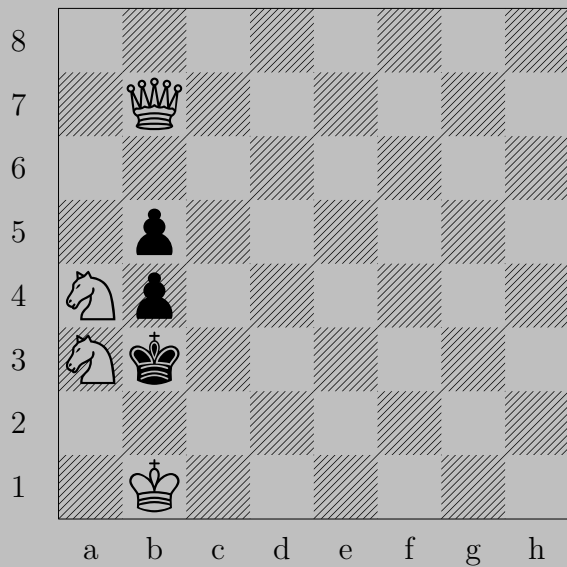


$\text{R}h5$

If $\text{K} \times a7$, $\text{R}a5$. If $\text{R} \times a7$, $\text{Q}b5$. If $\text{R}b7$, $\text{Q}a3$.

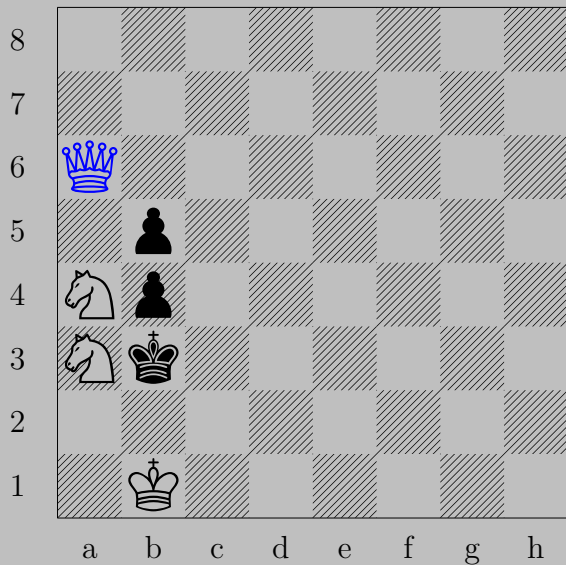
Otherwise, $\text{Q}b6$.

2651



S. Schett, 1881

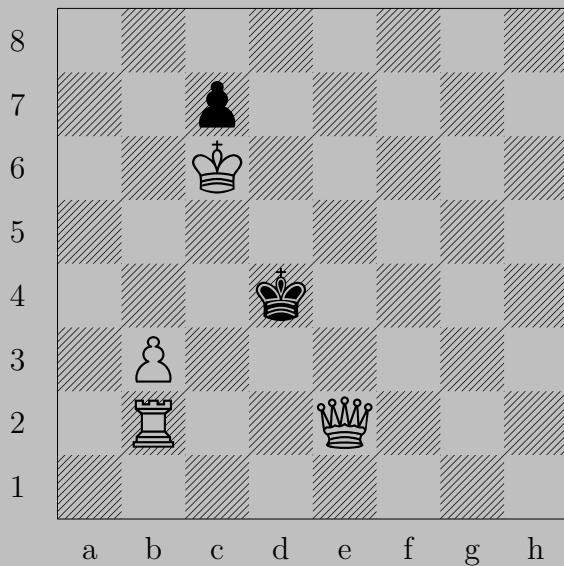
2651



♙a6

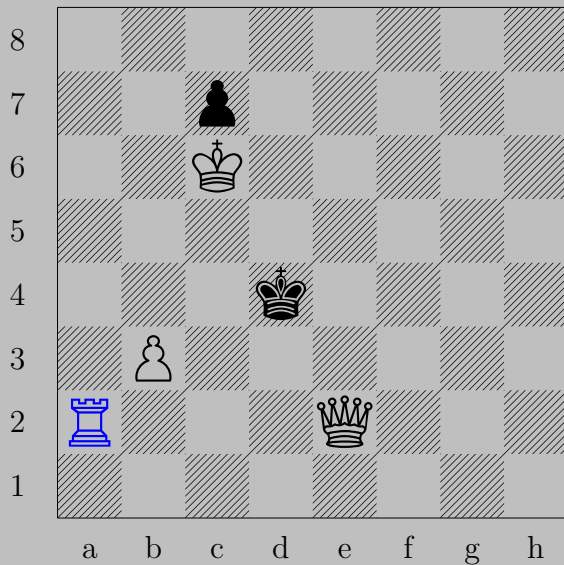
If ♖xa4, ♚d3. If ♖xa3, ♚xb5. If ♚xa3, ♘c5.

2652



Gy. Schiffert, 1927

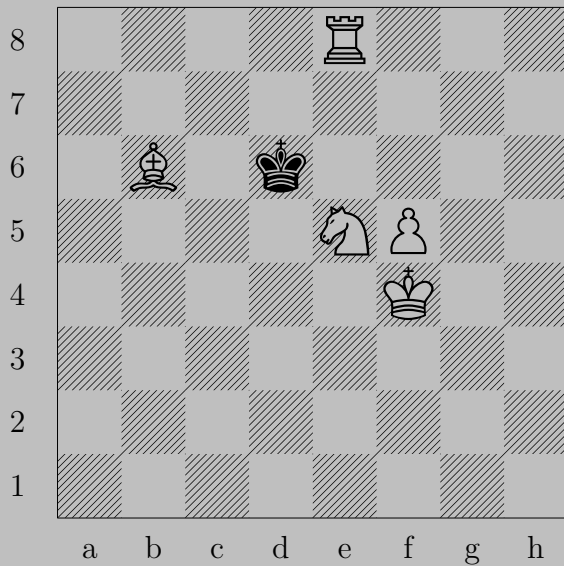
2652



♖a2, ♔c3

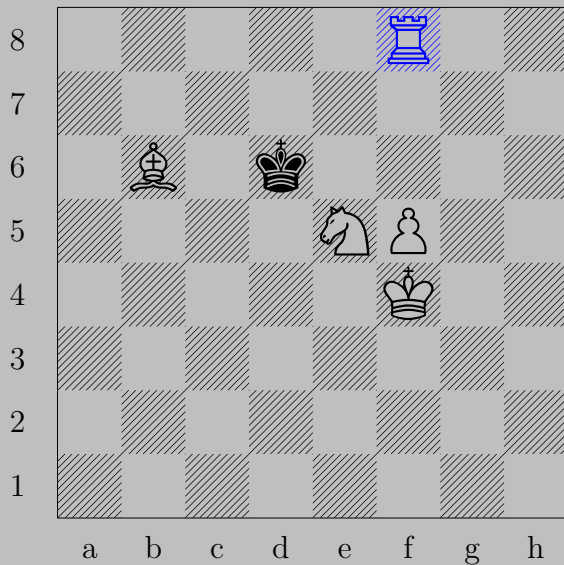
♕c4

2653



Gy. Schiffert, 1927

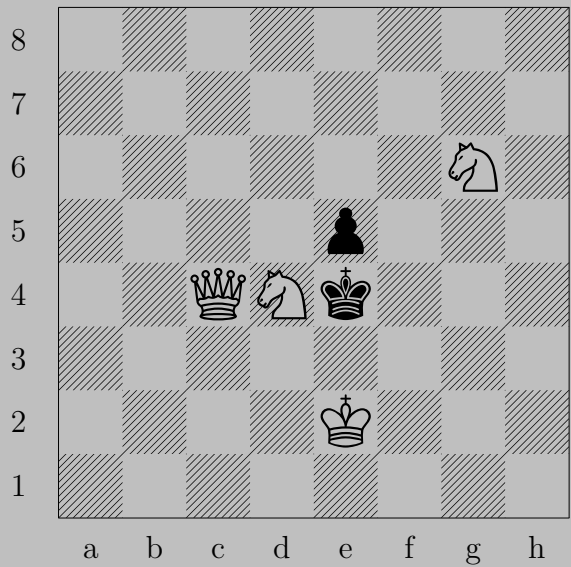
2653



♖f8

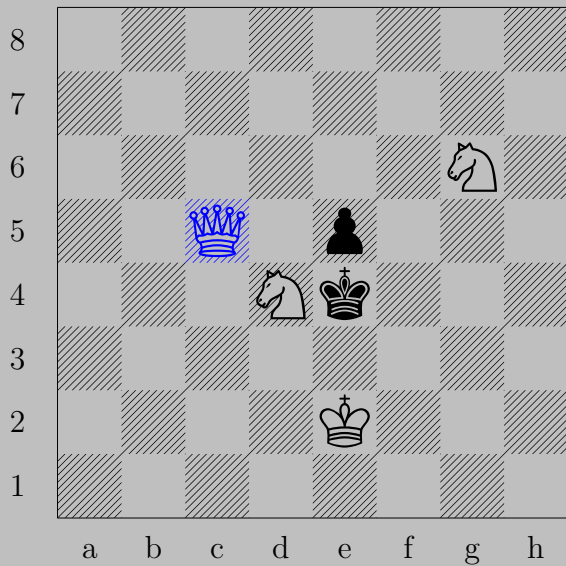
If ♔d5, ♖d8. If ♔e7, ♙c5.

2654



Gy. Schiffert, 1927

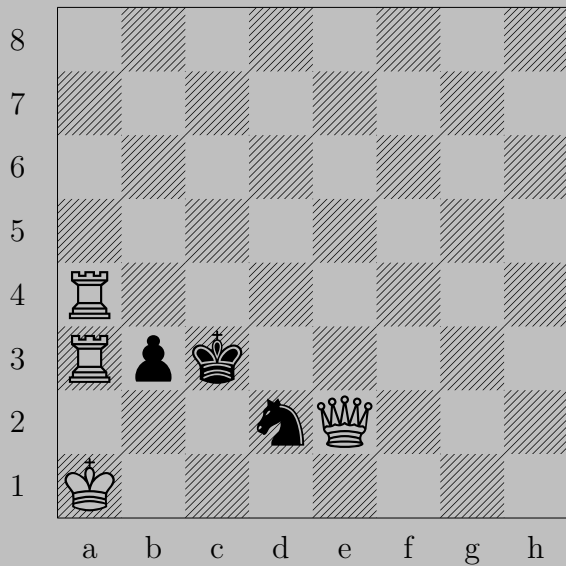
2654



♔c5, ♖x d4

♔e5

2655



Gy. Schiffert, 1927

2655



♔d1, anything

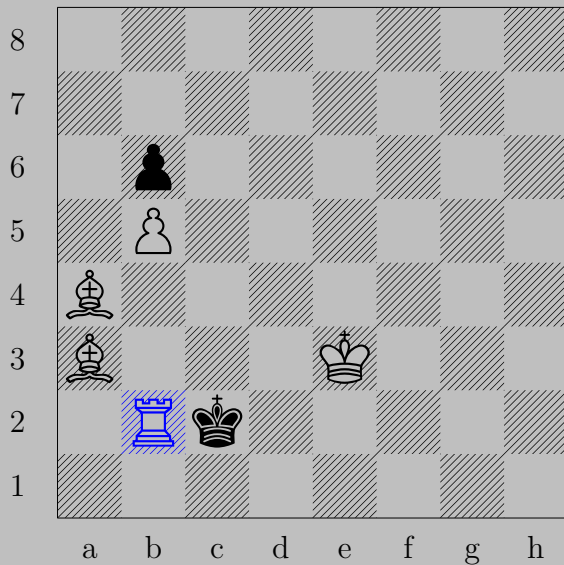
♖×b3

2656



Gy. Schiffert, 1927

2656



♖b2+

If ♔c1, ♖b4. If ♔c3, ♖c2.

2657



Gy. Schiffert, 1927

2657



$\text{♗} \times e7$

If $\text{♞} d5$, $\text{♕} \times d5$. Otherwise, $\text{♕} d5$.

2658



Gy. Schiffert, 1928

2658



$\text{Rg8}, \text{Pxg5}$

Rxg5

2659



Gy. Schiffert, 1928

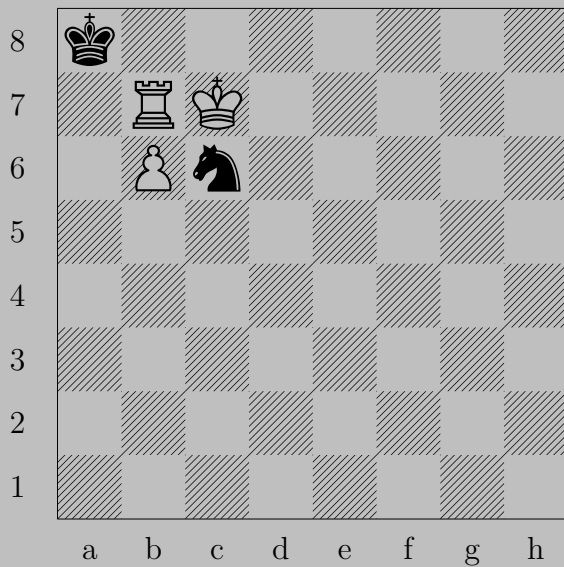
2659



♙c6

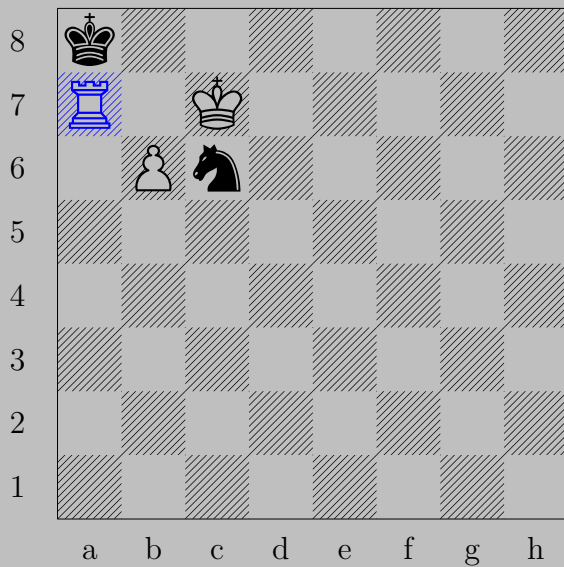
If ♔d4, ♚d6. If ♔f4, ♚e4.

2660



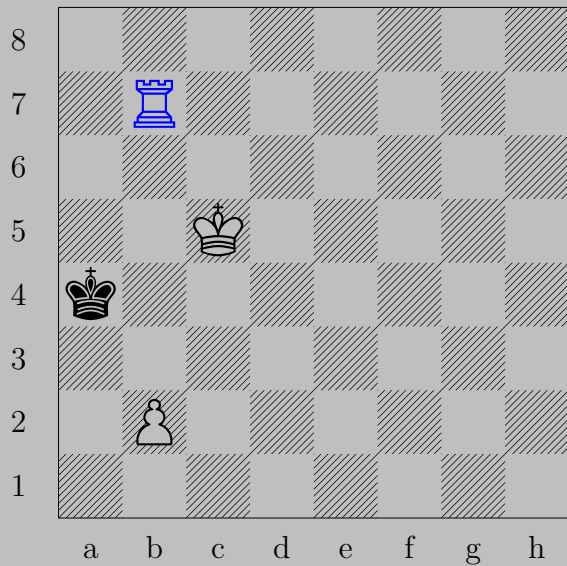
Gy. Schiffert, 1928

2660



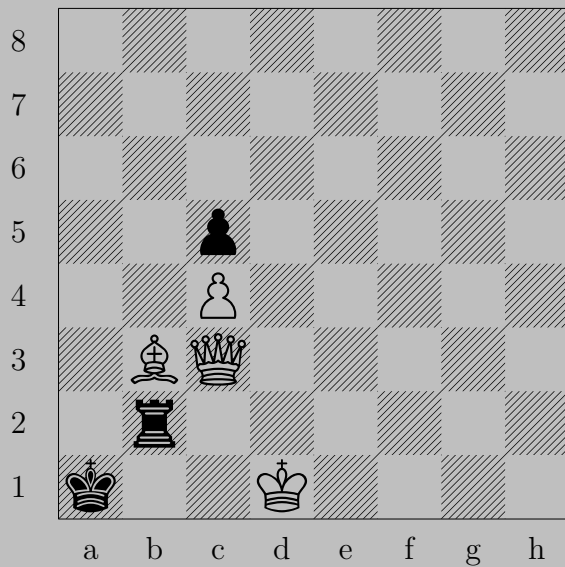
$\text{♖a7+}, \text{♞xa7}$
 ♙b7

2661



♖b7, ♔a5
♖a7

2662



Gy. Schiffert, 1931

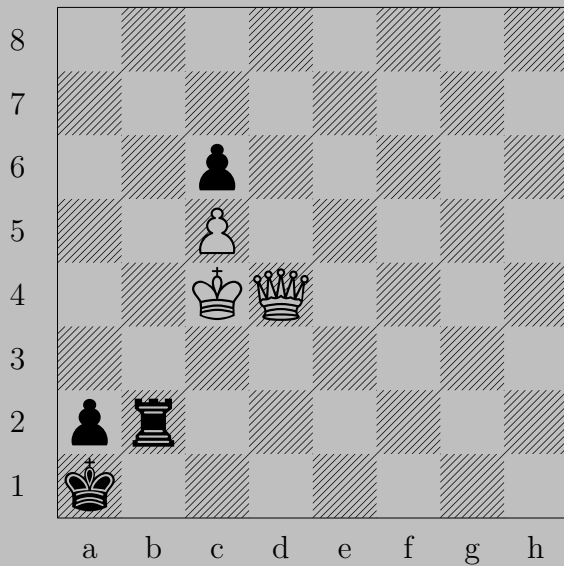
2662



♖c2, ♔a2

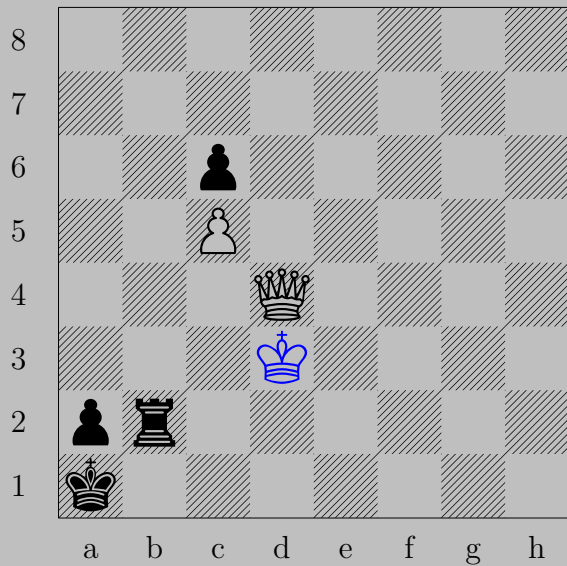
♚a5

2663



Gy. Schiffert, 1931

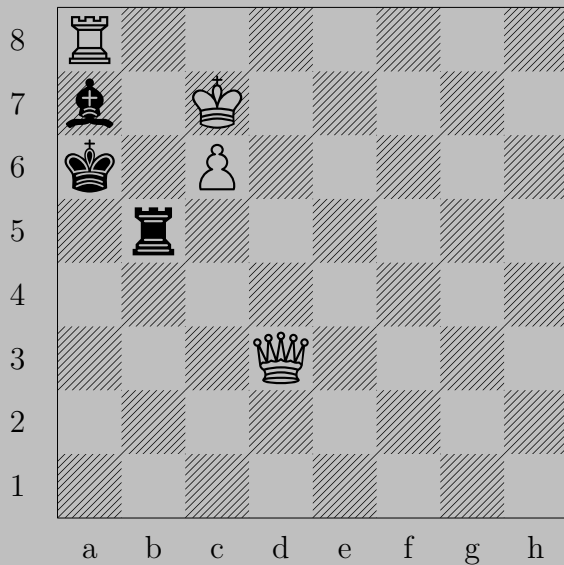
2663



♔d3, ♔b1

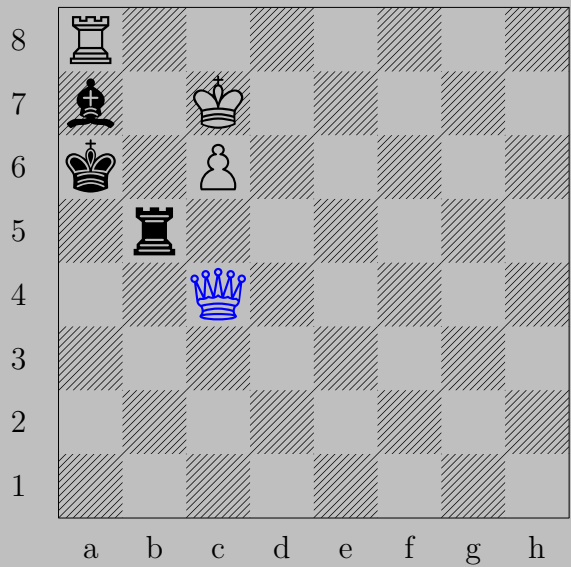
♚g1

2664



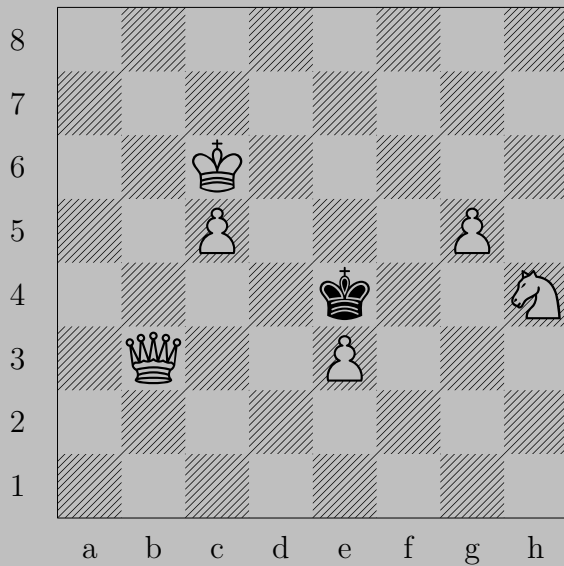
Gy. Schiffert, 1931

2664



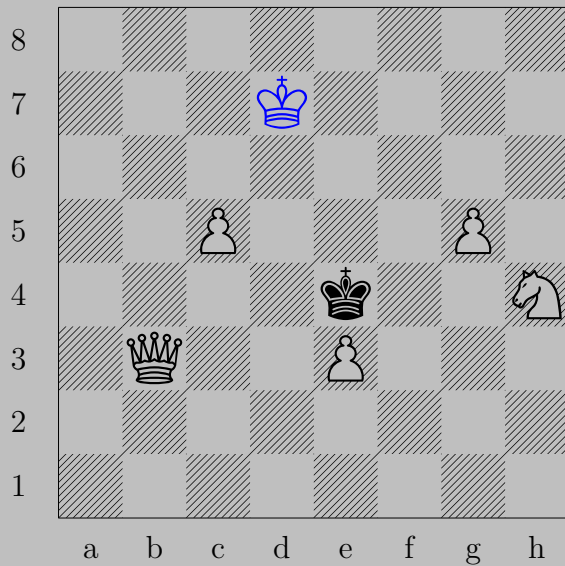
♙c4, ♚a5
♖xa7

2665



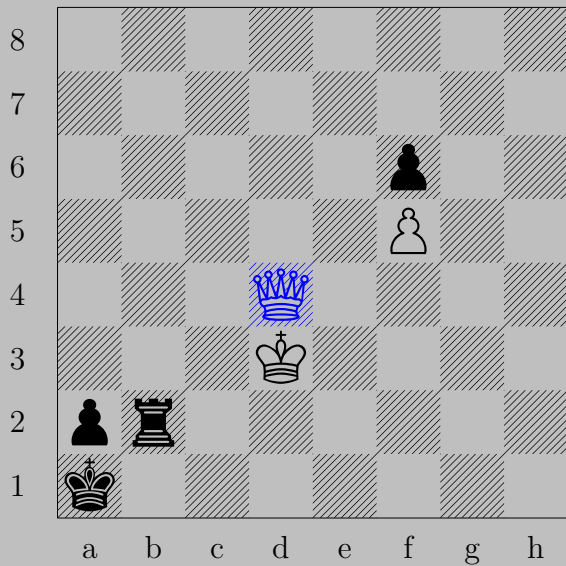
Gy. Schiffert, 1931

2665



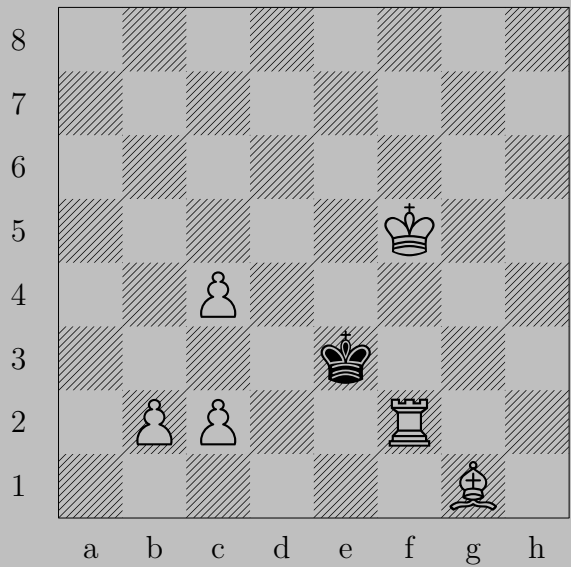
♔d7, ♔e5
♕e6

2666



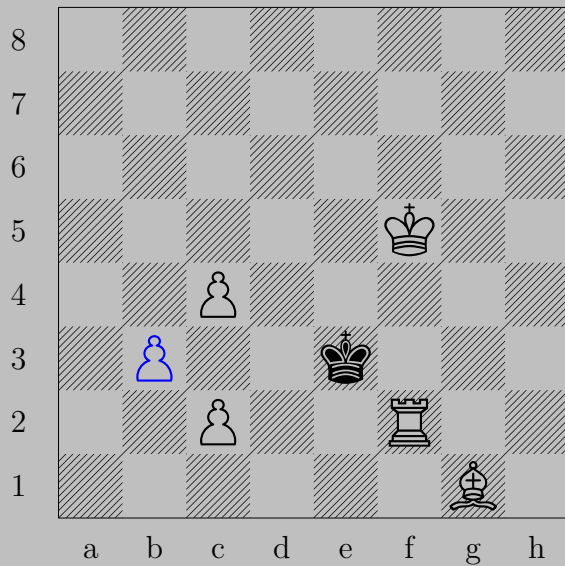
♙d4, ♔b1
♙g1

2667



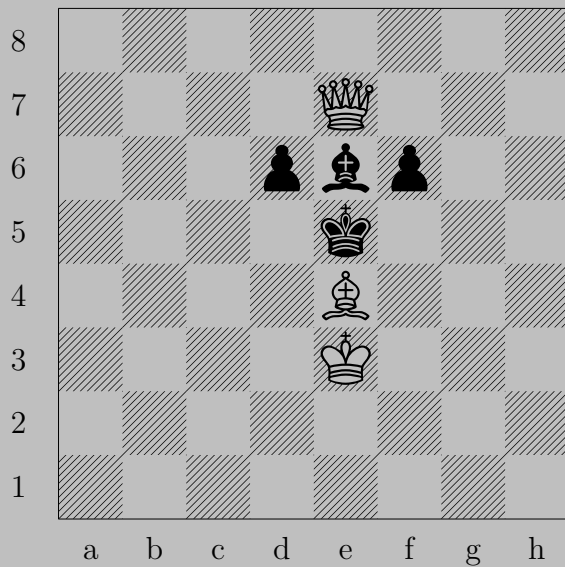
Gy. Schiffert, 1931

2667



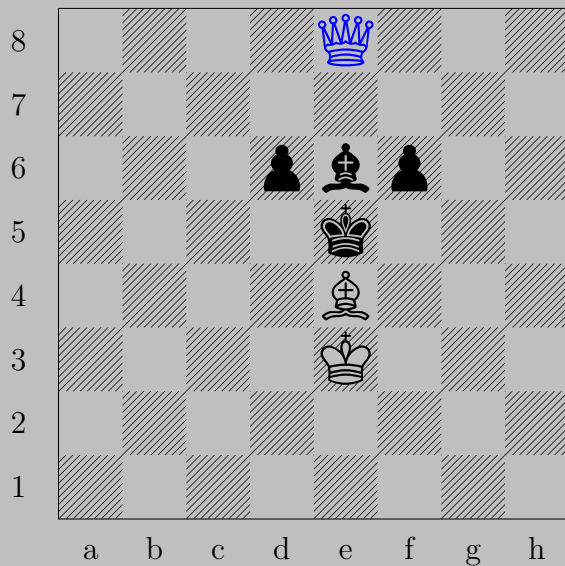
♙b3, ♚d4
♖f3

2668



Gy. Schiffert, 1925

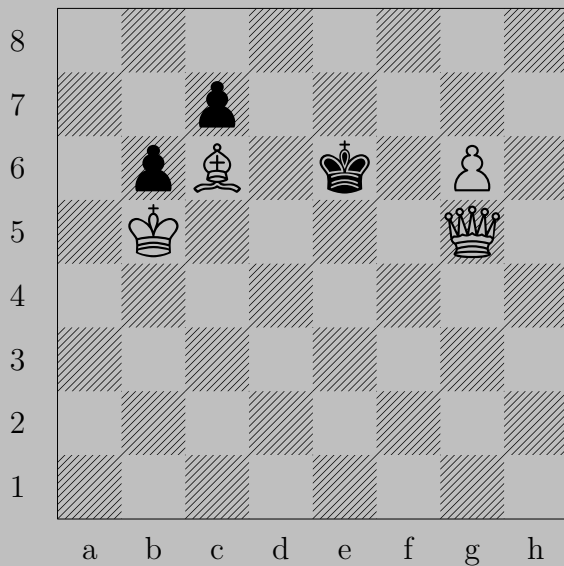
2668



♔e8

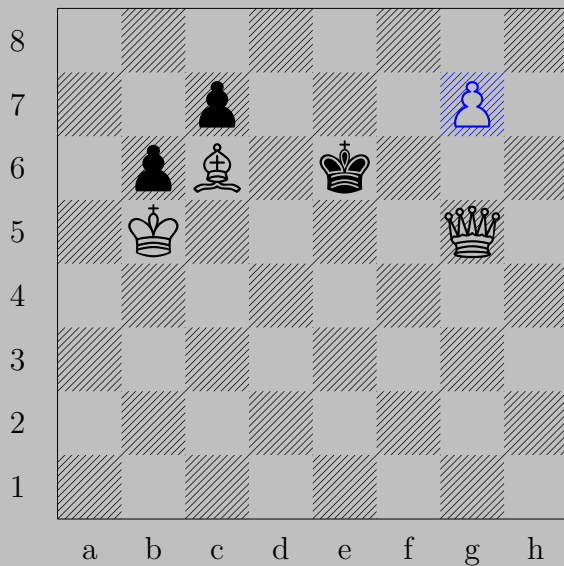
If ♖d5, ♔b8. If ♖f5, ♔h8.

2669



Gy. Schiffert, 1925

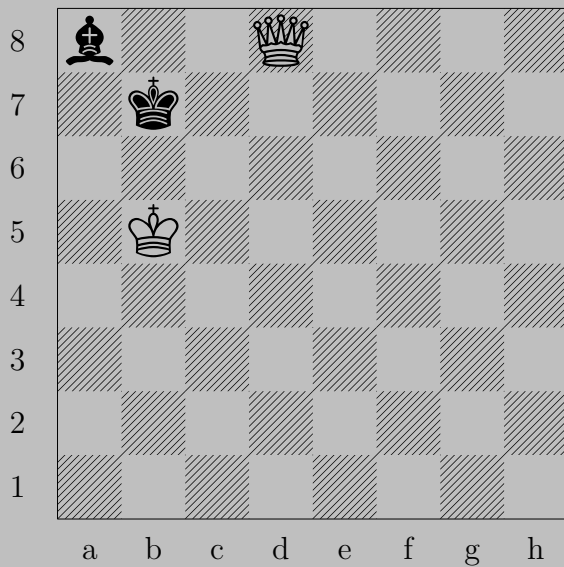
2669



$\triangleleft g7$

If $\triangleleft f7$, $\triangleleft g8(\triangleleft)$. If $\triangleleft d6$, $\triangleleft f6$.

2670



Gy. Schiffert, 1926

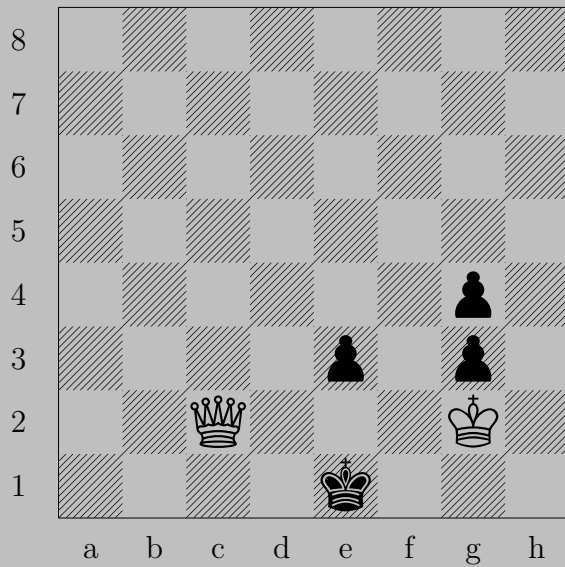
2670



♔c5, ♔a6 or ♔a7

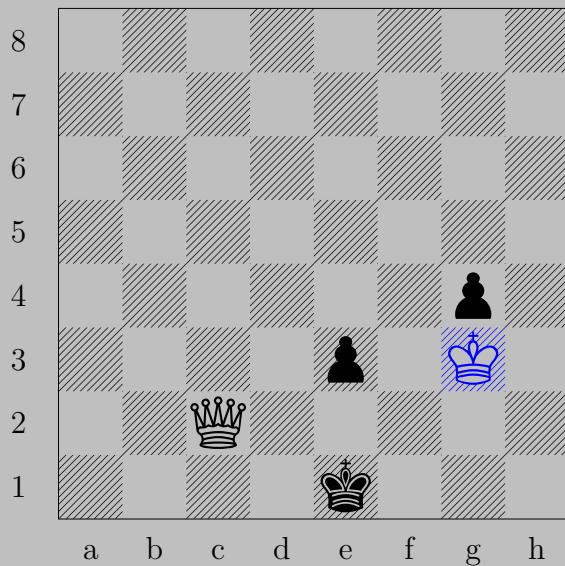
♚b6

2671



Gy. Schiffert, 1926

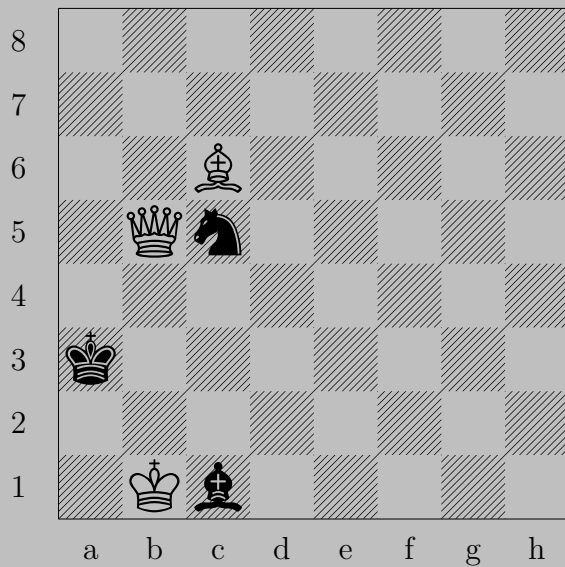
2671



♔×g3

If ♜e2, ♕c1. If ♔f1, ♕d1.

2672



Gy. Schiffert, 1926

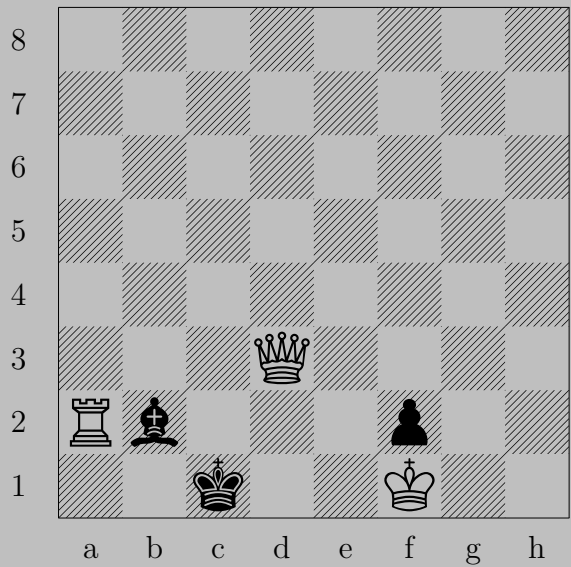
2672



♙a5+

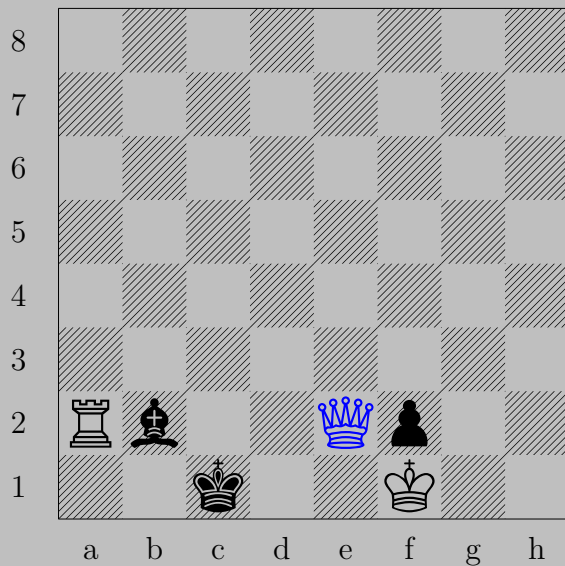
If ♔b3, ♕d5. If ♞a4, ♙xa4.

2673



Gy. Schiffert, 1926

2673

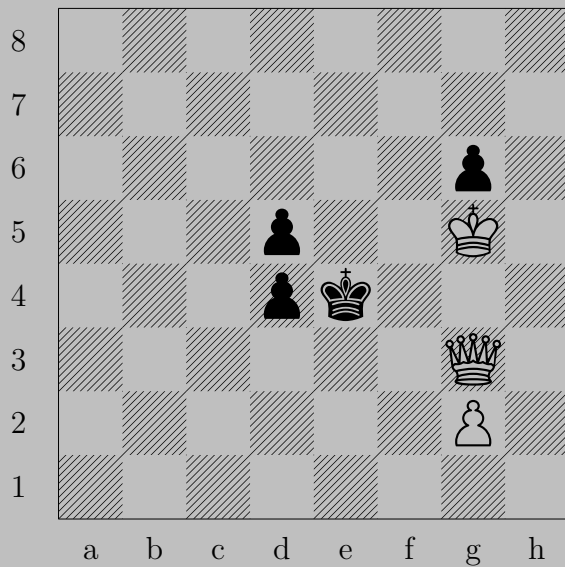


♙e2

If ♙b1, ♙×b2.

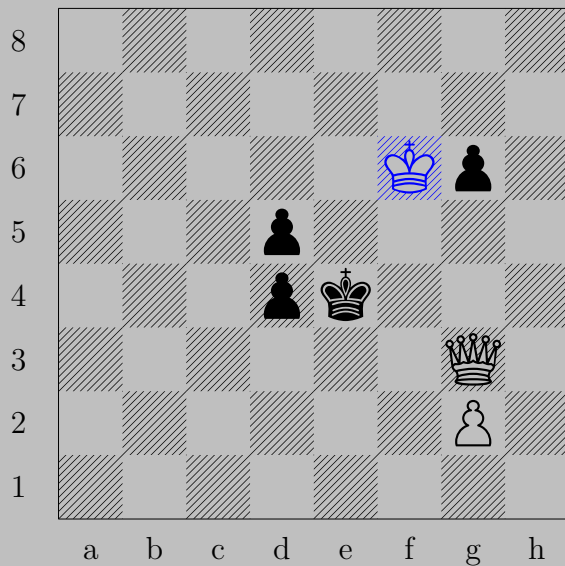
Otherwise, ♙c2.

2674



Gy. Schiffert, 1926

2674



♔f6

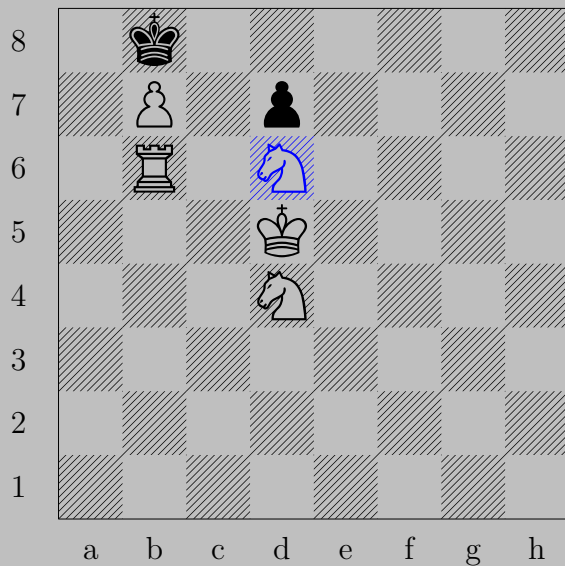
If ♖d3, ♕e5. If ♖g5, ♕f3.

2675



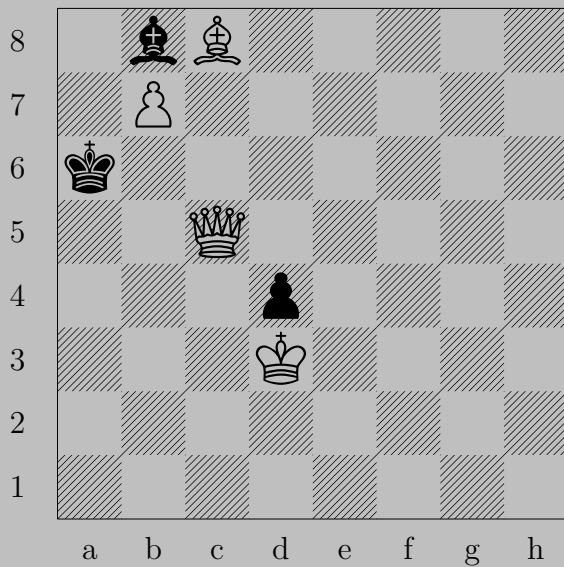
Gy. Schiffert, 1926

2675



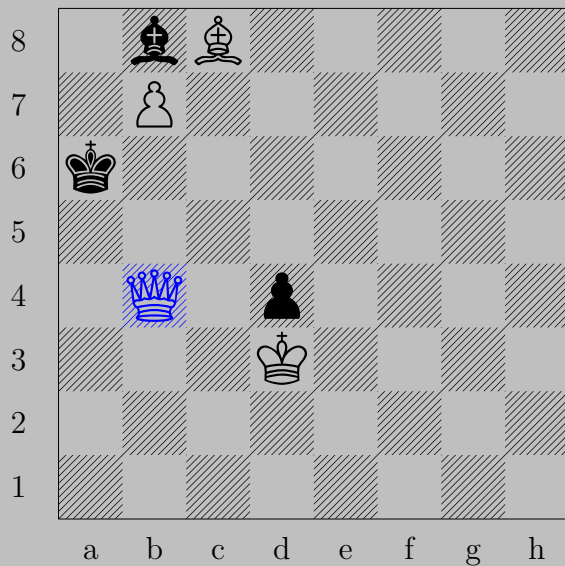
♞d6 , ♔a7 or ♔c7
 ♚b8 (♔)

2676



Gy. Schiffert, 1926

2676

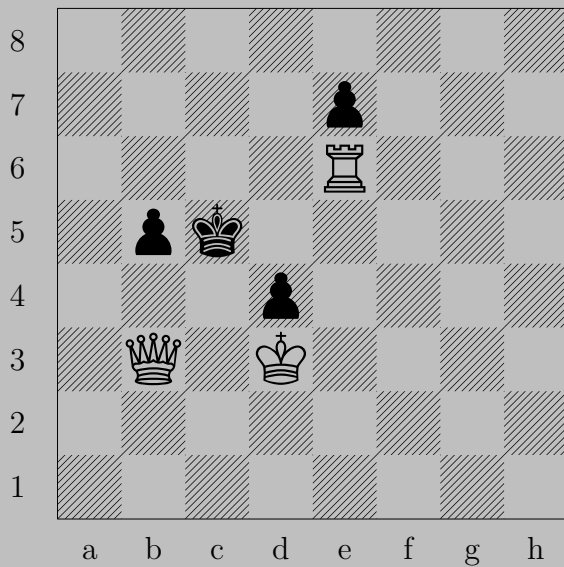


♙b4

If ♔a7, ♚a5.

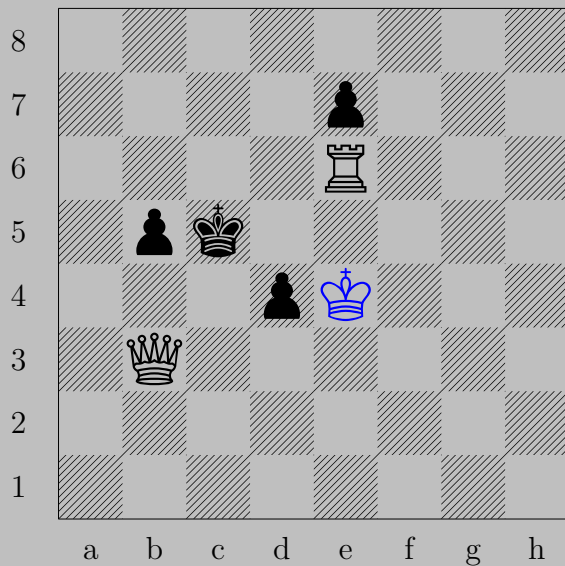
Otherwise, ♜b8(♚).

2677



Gy. Schiffert, 1926

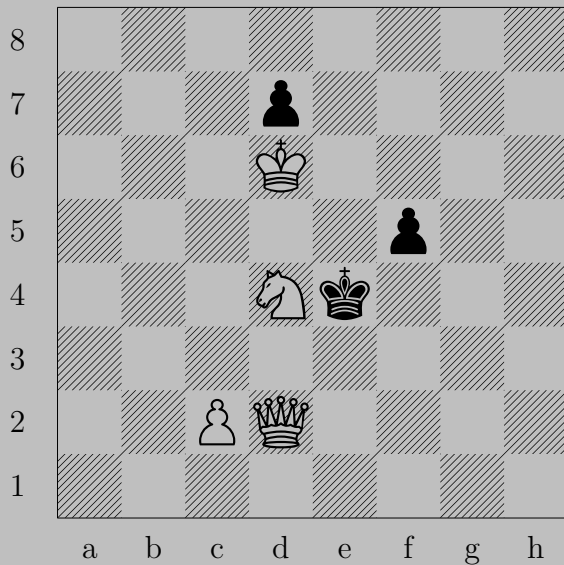
2677



♔e4

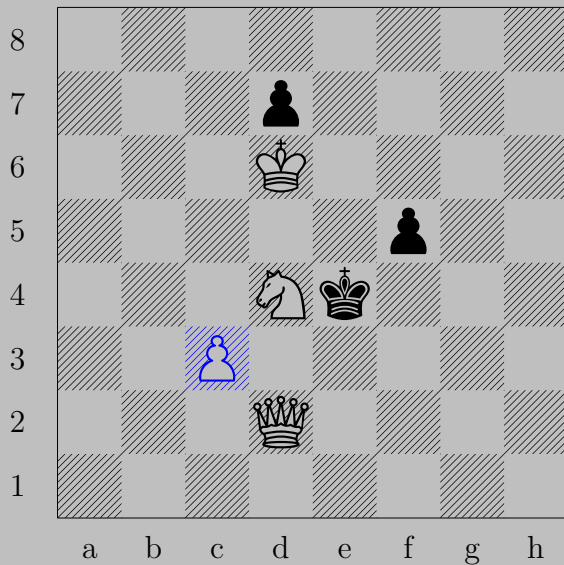
If ♖b4, ♕d5. If ♖d3, ♕c3.

2678



Gy. Schiffert, 1926

2678



♖c3, ♖f4

♚e2

2679



Gy. Schiffert, 1926

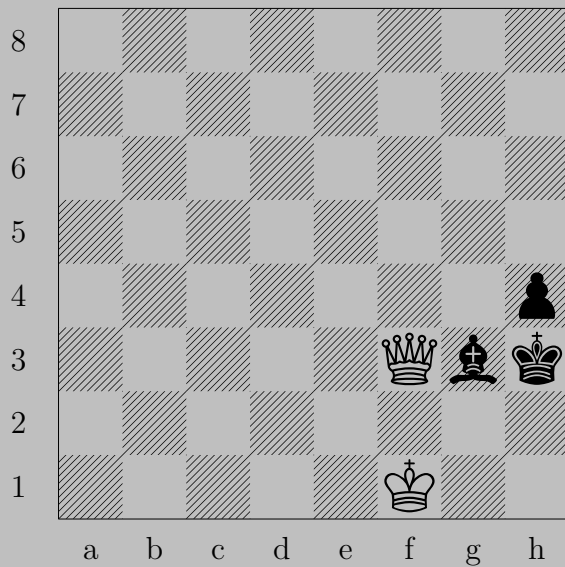
2679



♔c2

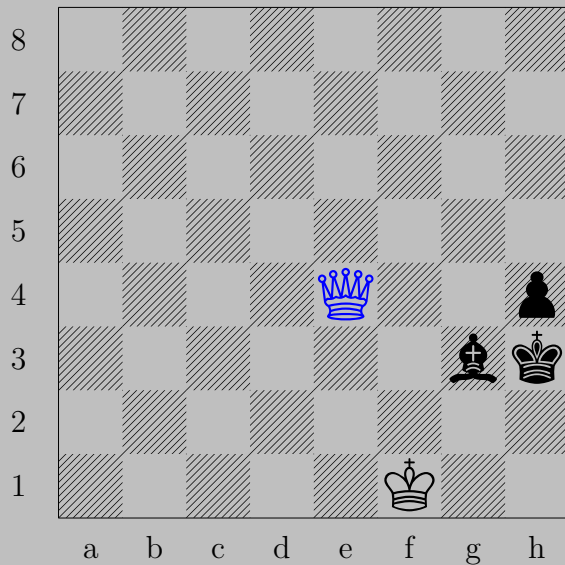
If ♟d3+, ♚xd3. If ♔f1, ♚f2.

2680



Gy. Schiffert, 1926

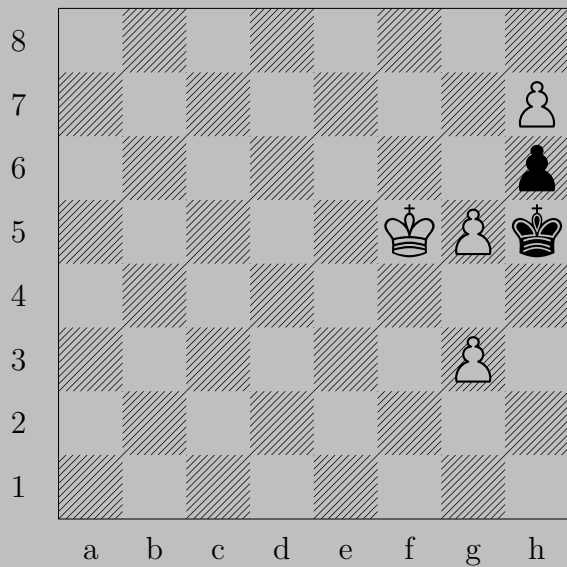
2680



♔e4, anything

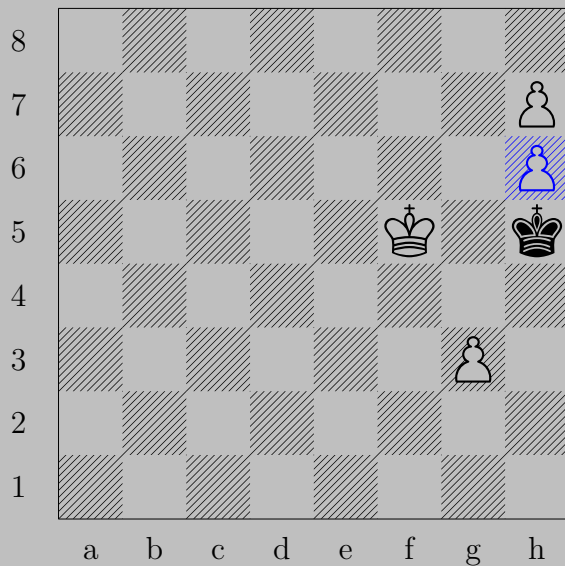
♔g2

2681

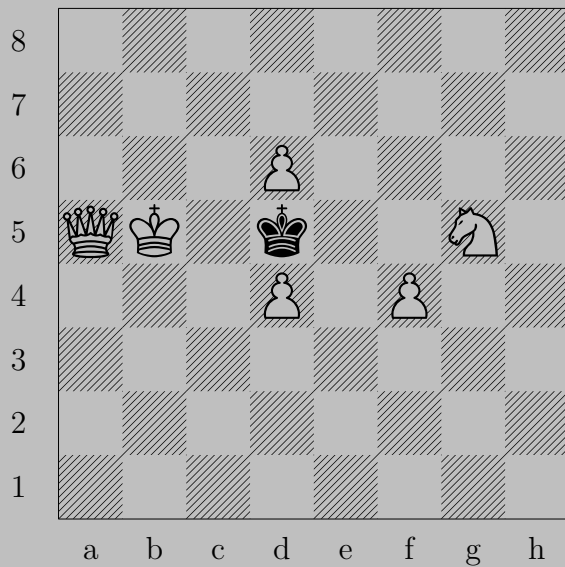


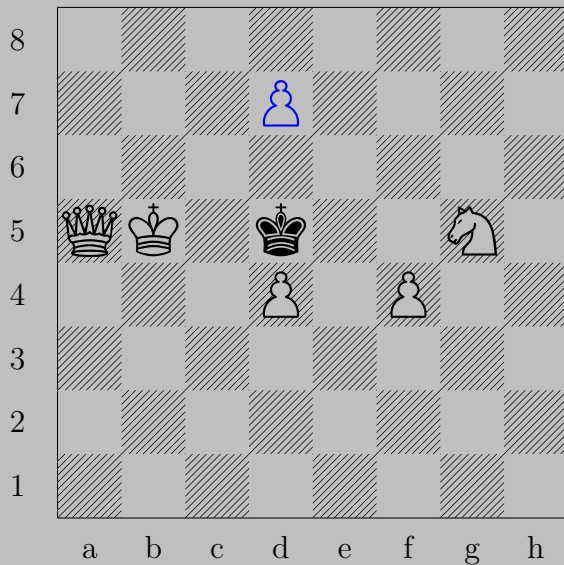
Gy. Schiffert, 1926

2681



$\text{♟} \times \text{h6}, \text{♔} \times \text{h6}$
 $\text{♟} \text{h8}(\text{♔})$

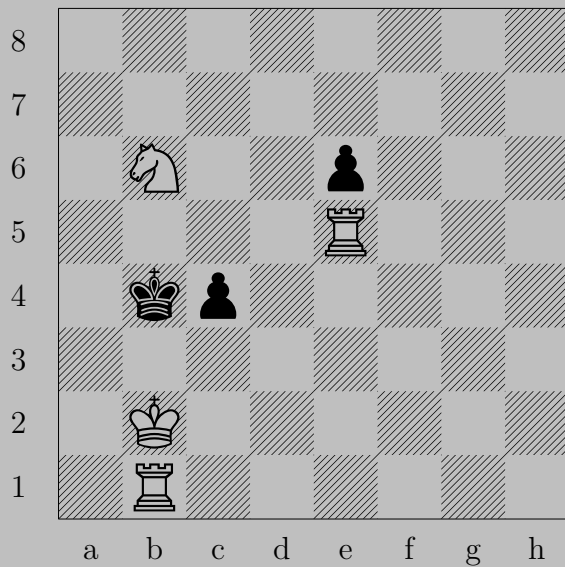




♠d7

If ♙×d4, ♚d2. If ♙d6, ♠d8(♚).

2683



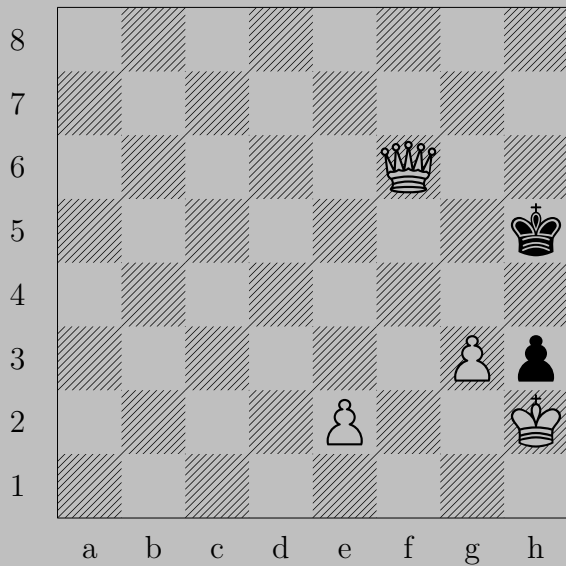
Gy. Schiffert, 1926

2683



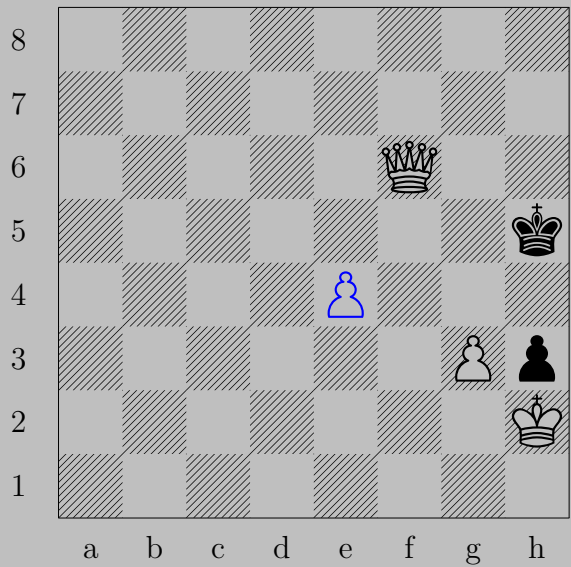
♔c2+, ♔a3
♖a5

2684



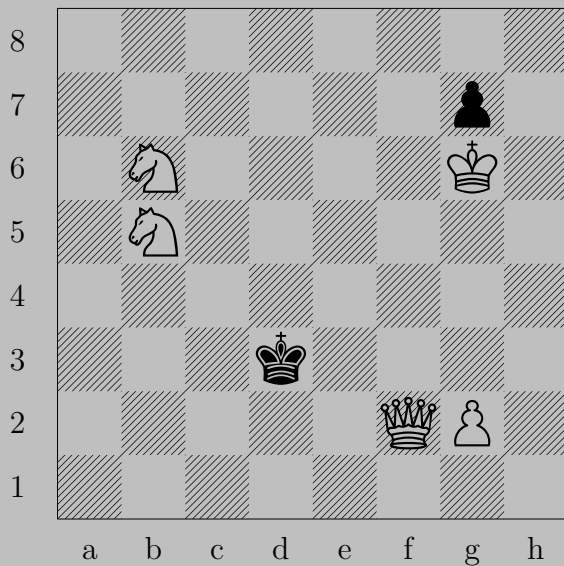
Gy. Schiffert, 1931

2684



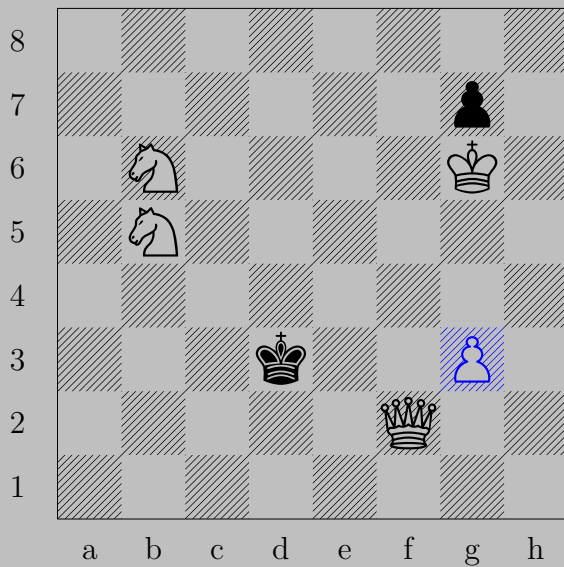
♖e4, ♔g4
♚f5

2685



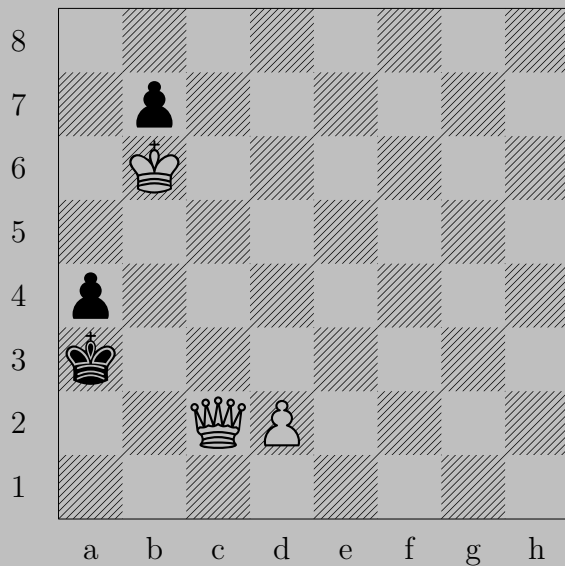
Gy. Schiffert, 1931

2685



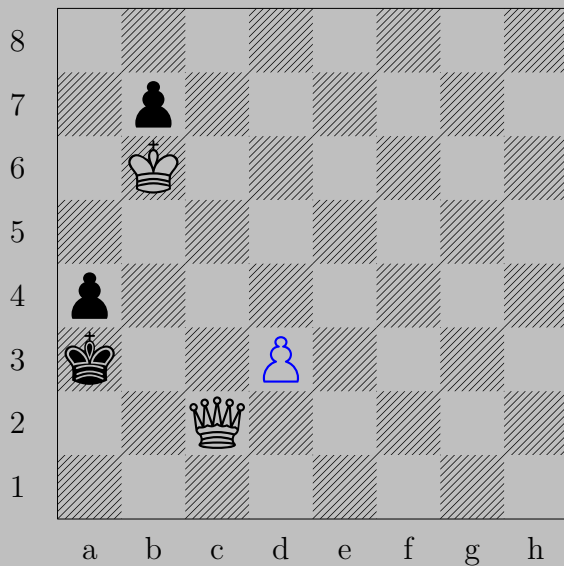
♠g3, ♔e4
♚e2

2686



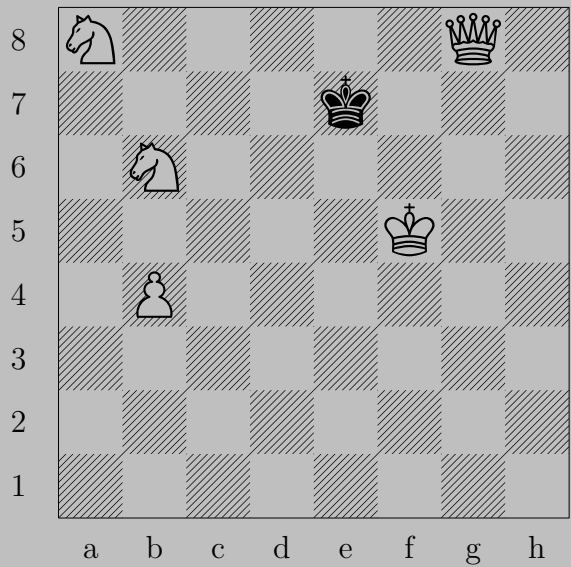
Gy. Schiffert, 1931

2686



♙d3, ♚b4
♚b2

2687



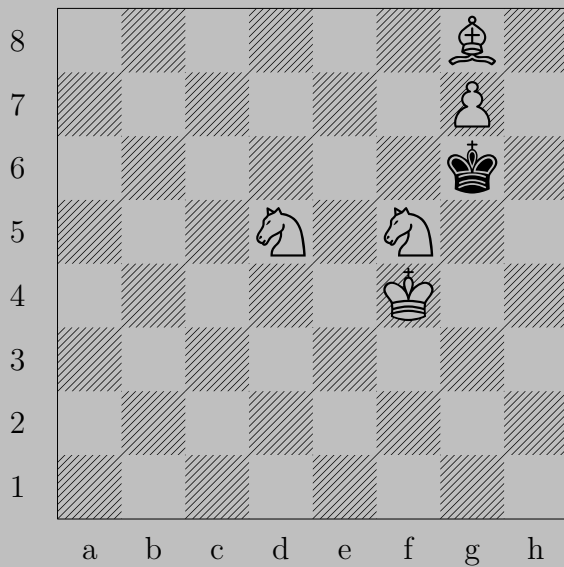
Gy. Schiffert, 1931

2687

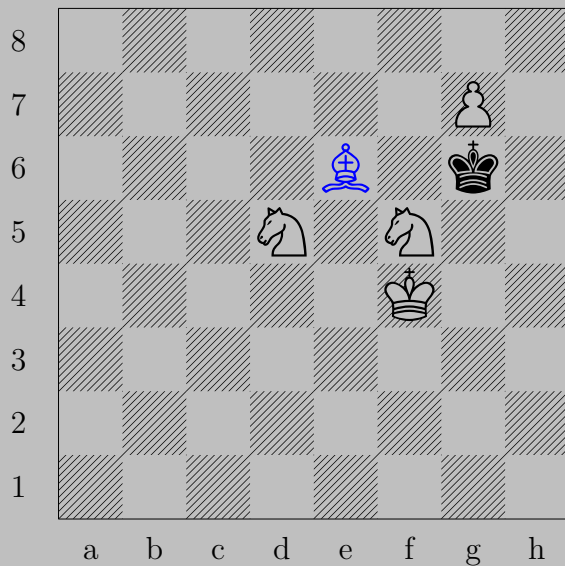


♖b5, ♔d6
♚f8

2688



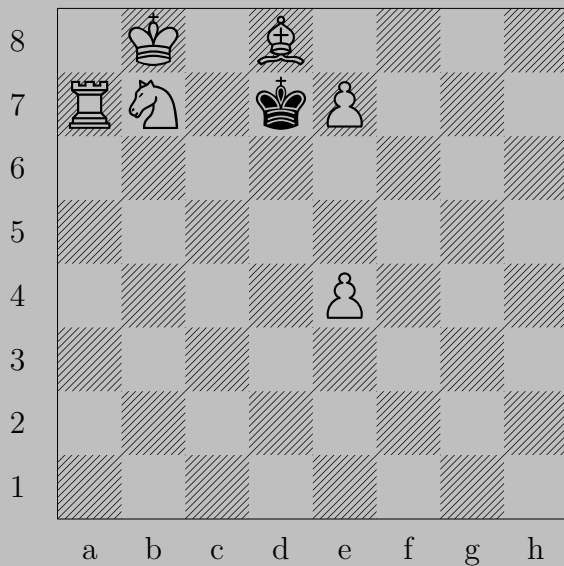
Gy. Schiffert, 1931



♗e6

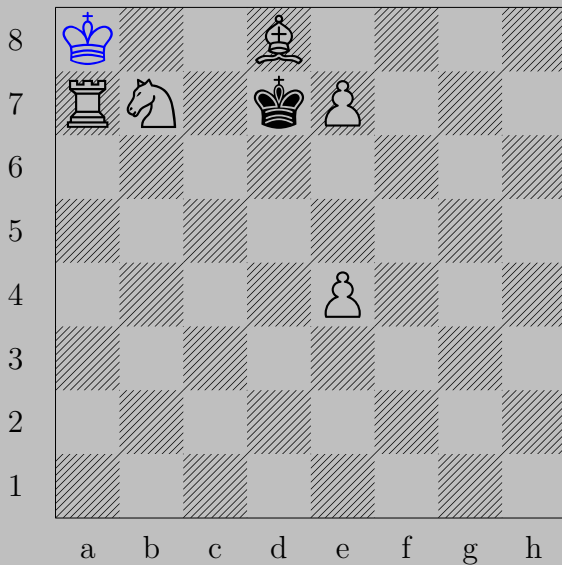
If ♖h5, ♕f7. If ♖h7, ♜g8(♔).

2689



Gy. Schiffert, 1931

2689



♔a8

If ♖c8 or ♖e8, ♘d6. If ♖c6 or ♖e6, ♗e8(♔).

2690



Gy. Schiffert, 1931

2690



♖b6, ♔c5

♙b5

2691



Gy. Schiffert, 1931

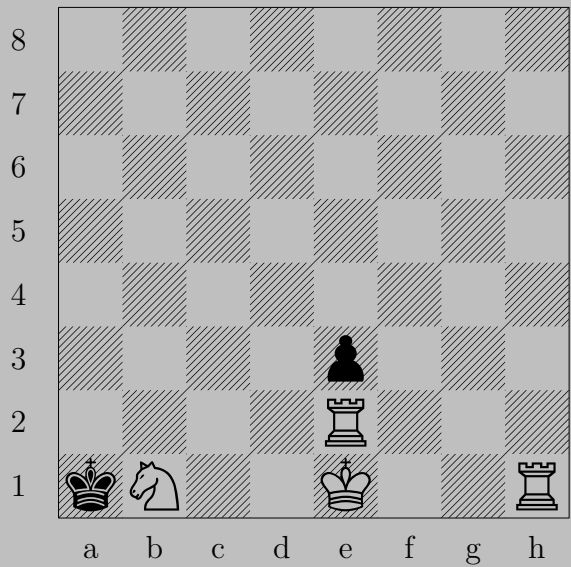
2691



♙a2

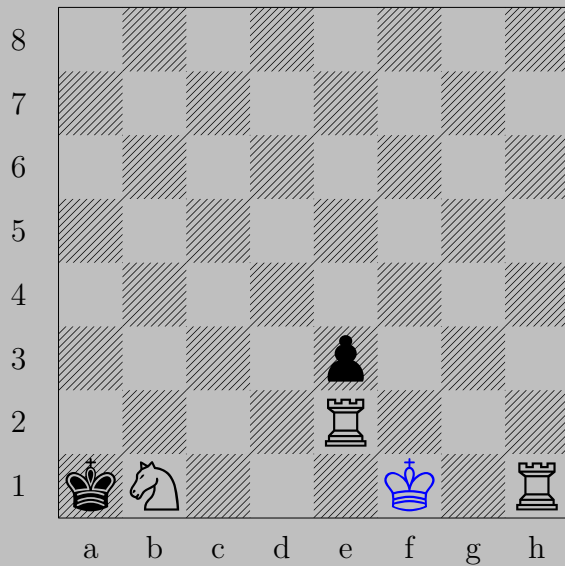
If ♖b3, ♙d2. If ♘b2, ♙c4.

2692



Gy. Schiffert, 1932

2692



♔f1, ♔×b1

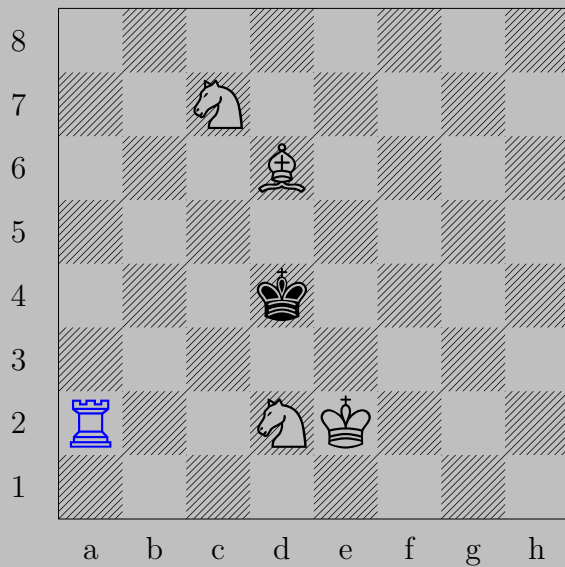
♔g2

2693



Gy. Schiffert, 1931

2693



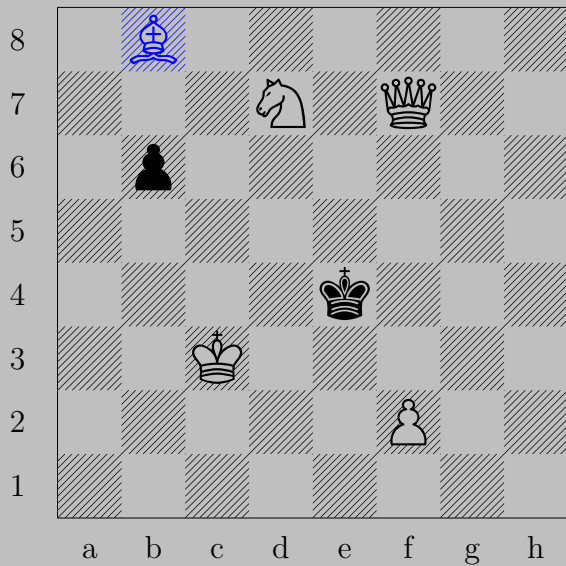
♖a2, ♔c3
♘b5

2694



Gy. Schiffert, 1931

2694



♖b8, ♙b5
♘c5

2695



Gy. Schiffert, 1931

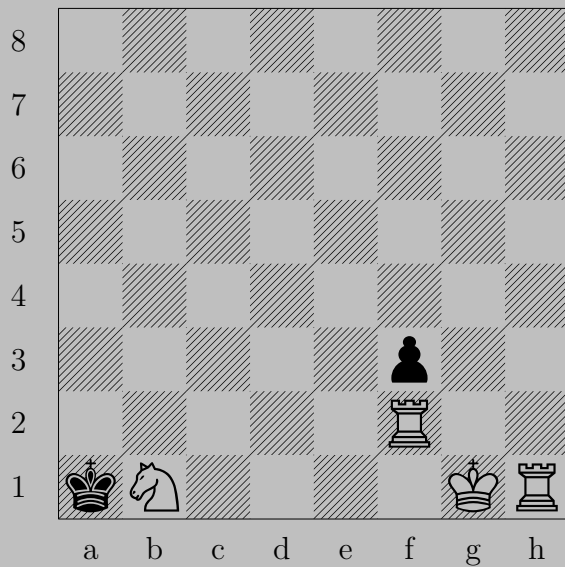
2695



♔g2, ♖e5

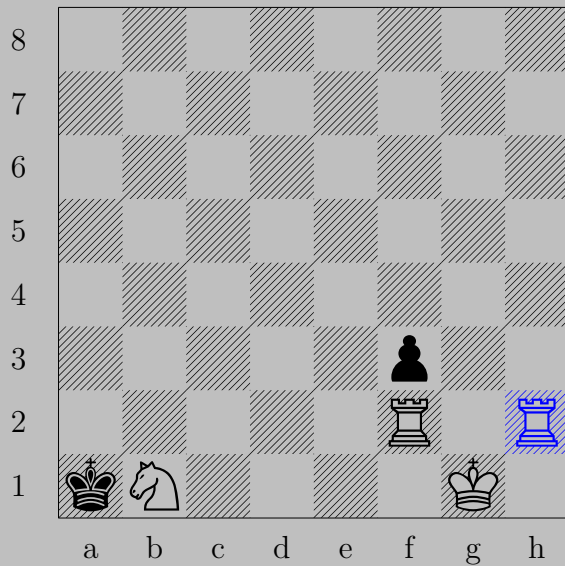
♑d2

2696



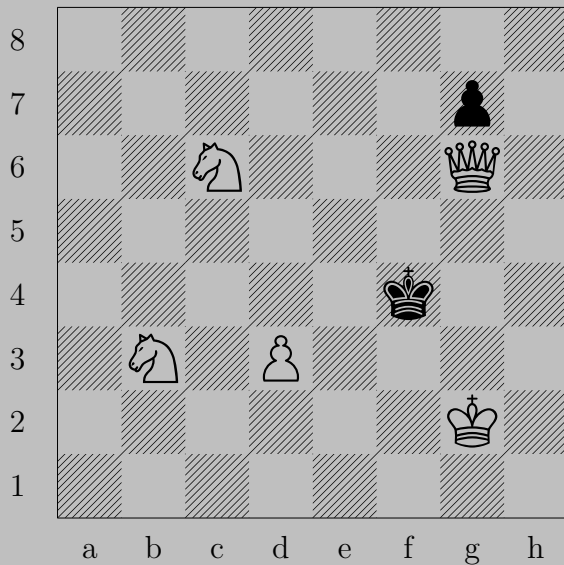
Gy. Schiffert, 1931

2696



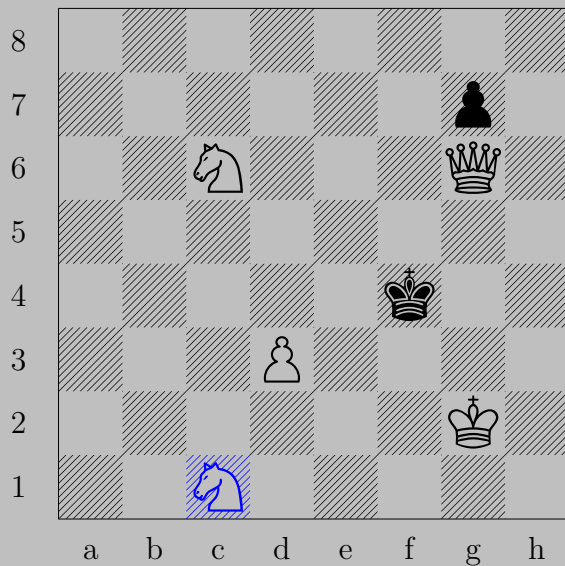
$\text{R}(h1)h2, \text{K}\times b1$
 $\text{R}f1$

2697



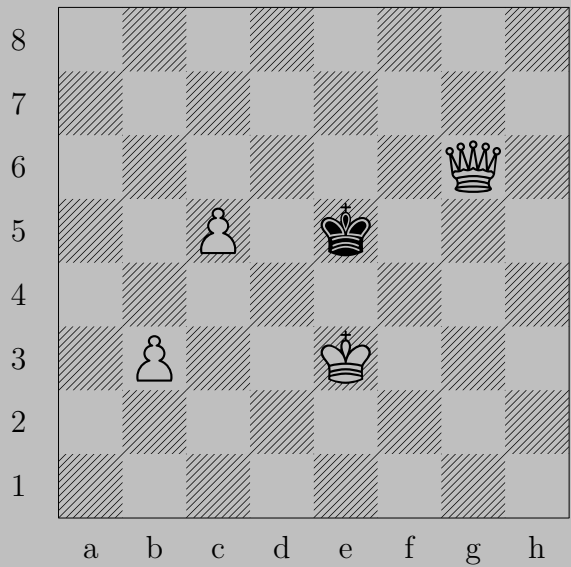
Gy. Schiffert, 1931

2697



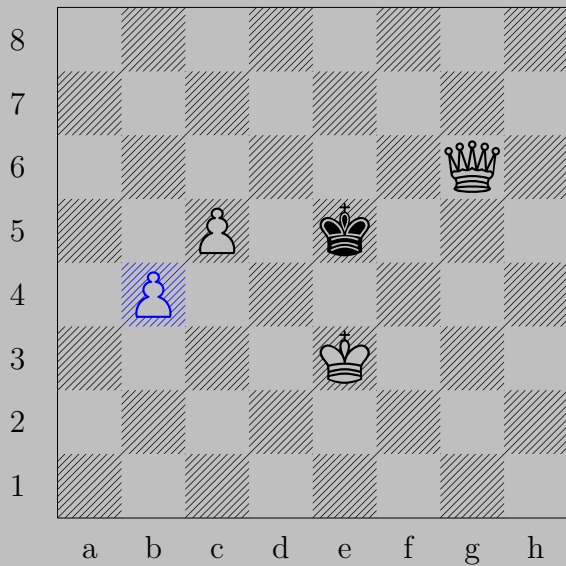
♞c1, ♔e3
 ♚g5

2698



Gy. Schiffert, 1931

2698



♙b4, ♚d5

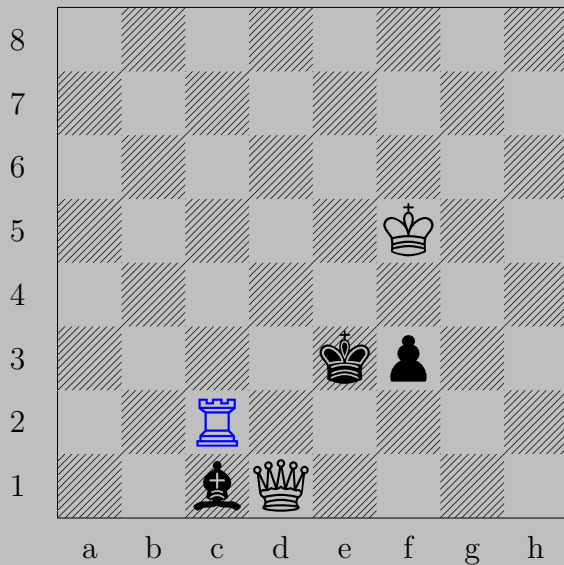
♚e4

2699



Gy. Schiffert, 1927

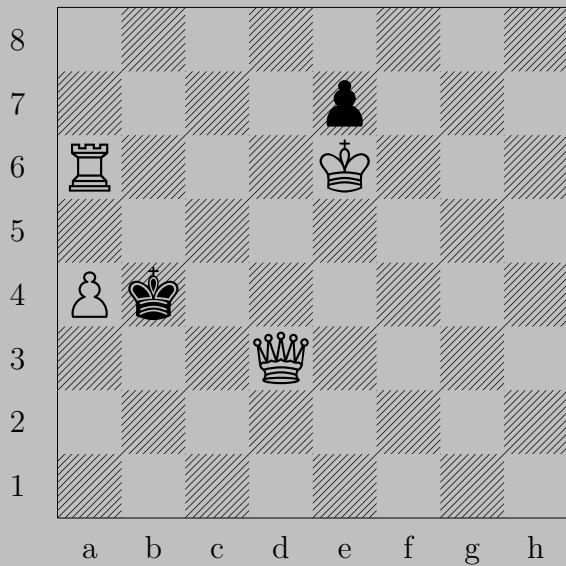
2699



Rc2

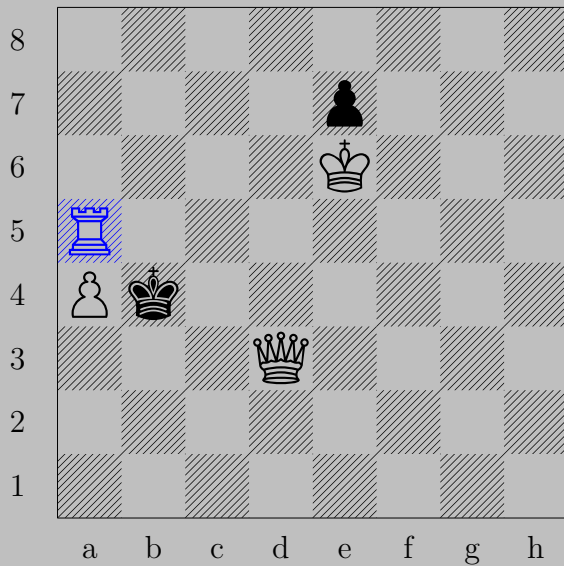
If Nf2 , Rc3 . If Nb2-a3 , Kd2 . If Nd2 , Kxd2 .

2700



Gy. Schiffert, 1927

2700



$\text{R}a5, \text{K} \times a5$
 $\text{Q}b5$