

# Chess Puzzles

2101-2200

Mate in Two

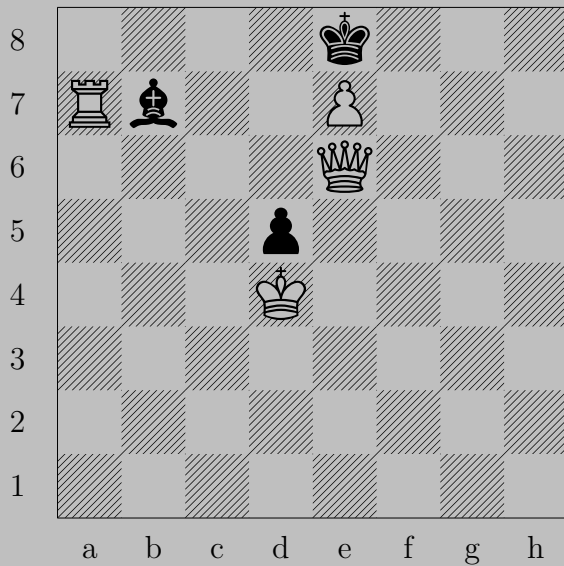
White to Move

László Polgár

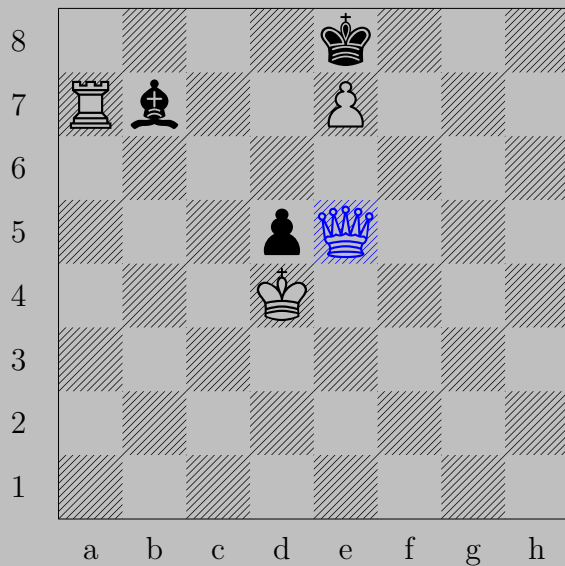
## Links

<a href="#">2101</a>	<a href="#">2102</a>	<a href="#">2103</a>	<a href="#">2104</a>	<a href="#">2105</a>	<a href="#">2106</a>	<a href="#">2107</a>	<a href="#">2108</a>	<a href="#">2109</a>	<a href="#">2110</a>
<a href="#">2111</a>	<a href="#">2112</a>	<a href="#">2113</a>	<a href="#">2114</a>	<a href="#">2115</a>	<a href="#">2116</a>	<a href="#">2117</a>	<a href="#">2118</a>	<a href="#">2119</a>	<a href="#">2120</a>
<a href="#">2121</a>	<a href="#">2122</a>	<a href="#">2123</a>	<a href="#">2124</a>	<a href="#">2125</a>	<a href="#">2126</a>	<a href="#">2127</a>	<a href="#">2128</a>	<a href="#">2129</a>	<a href="#">2130</a>
<a href="#">2131</a>	<a href="#">2132</a>	<a href="#">2133</a>	<a href="#">2134</a>	<a href="#">2135</a>	<a href="#">2136</a>	<a href="#">2137</a>	<a href="#">2138</a>	<a href="#">2139</a>	<a href="#">2140</a>
<a href="#">2141</a>	<a href="#">2142</a>	<a href="#">2143</a>	<a href="#">2144</a>	<a href="#">2145</a>	<a href="#">2146</a>	<a href="#">2147</a>	<a href="#">2148</a>	<a href="#">2149</a>	<a href="#">2150</a>
<a href="#">2151</a>	<a href="#">2152</a>	<a href="#">2153</a>	<a href="#">2154</a>	<a href="#">2155</a>	<a href="#">2156</a>	<a href="#">2157</a>	<a href="#">2158</a>	<a href="#">2159</a>	<a href="#">2160</a>
<a href="#">2161</a>	<a href="#">2162</a>	<a href="#">2163</a>	<a href="#">2164</a>	<a href="#">2165</a>	<a href="#">2166</a>	<a href="#">2167</a>	<a href="#">2168</a>	<a href="#">2169</a>	<a href="#">2170</a>
<a href="#">2171</a>	<a href="#">2172</a>	<a href="#">2173</a>	<a href="#">2174</a>	<a href="#">2175</a>	<a href="#">2176</a>	<a href="#">2177</a>	<a href="#">2178</a>	<a href="#">2179</a>	<a href="#">2180</a>
<a href="#">2181</a>	<a href="#">2182</a>	<a href="#">2183</a>	<a href="#">2184</a>	<a href="#">2185</a>	<a href="#">2186</a>	<a href="#">2187</a>	<a href="#">2188</a>	<a href="#">2189</a>	<a href="#">2190</a>
<a href="#">2191</a>	<a href="#">2192</a>	<a href="#">2193</a>	<a href="#">2194</a>	<a href="#">2195</a>	<a href="#">2196</a>	<a href="#">2197</a>	<a href="#">2198</a>	<a href="#">2199</a>	<a href="#">2200</a>

2101



N. Kovács - D. Elekes, 1924

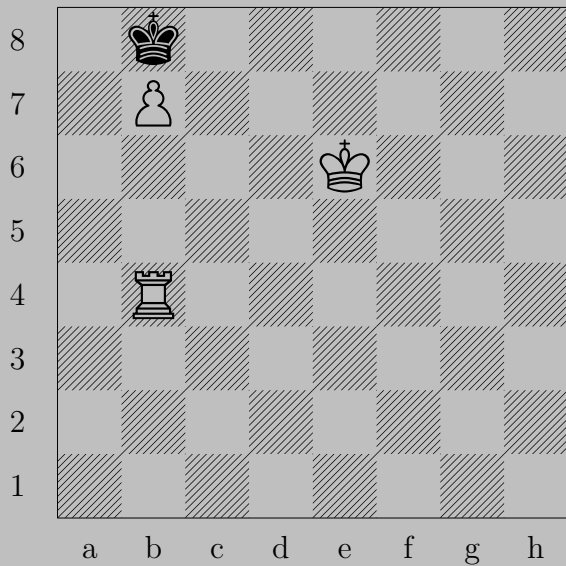


♔e5

If ♔d7 or ♔f7, ♠e8(♔).

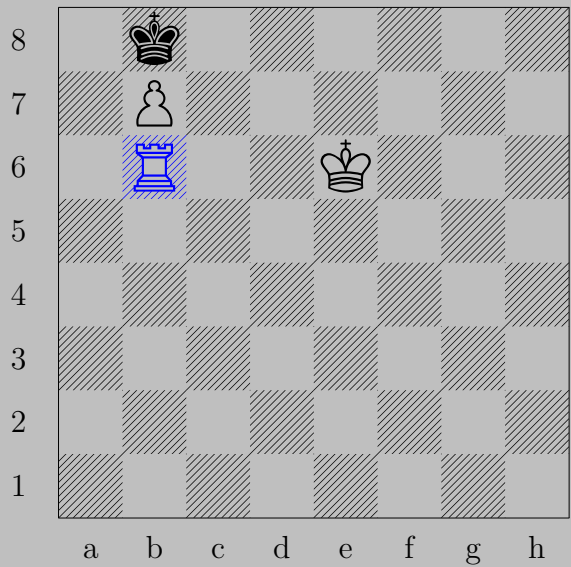
Otherwise, ♚h5.

2102



V. Kovalenko, 1968

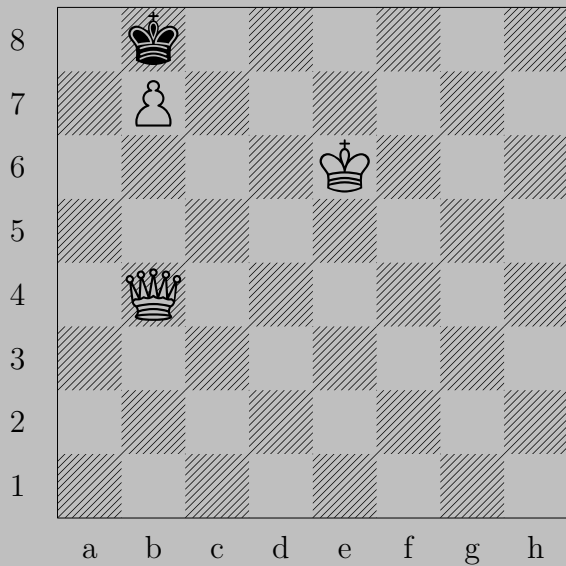
2102



♖b6, ♔a7 or ♔c7

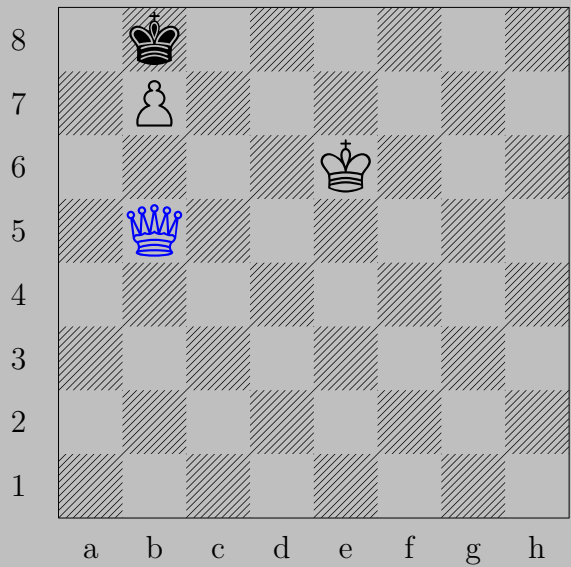
♜b8(♔)

2103



V. Kovalenko, 1968

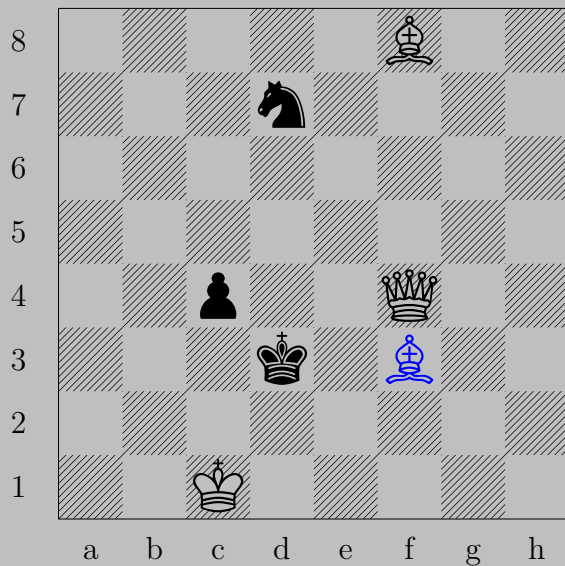
2103



♔b5, ♔a7 or ♔c7  
♟b8(♔)





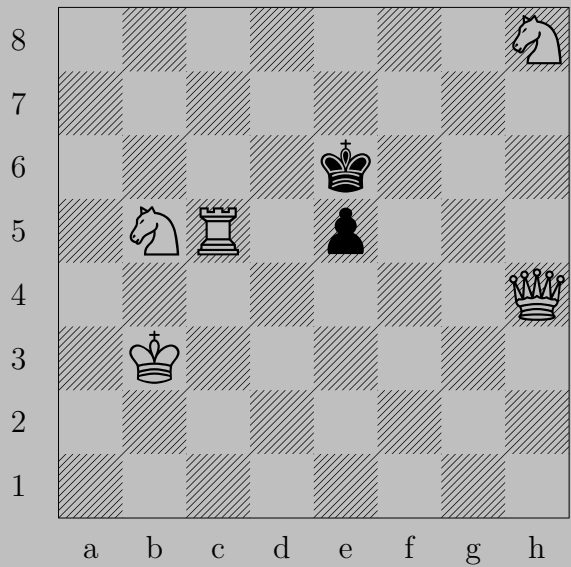


♙f3

If ♗c3, ♙e4. If ♔c3, ♙e3.

Otherwise, ♙d2.

2105



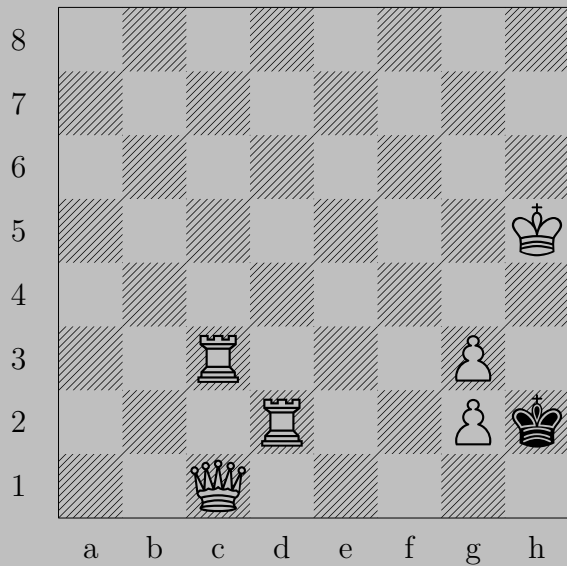
V. Kozhakin, 1985/86

2105

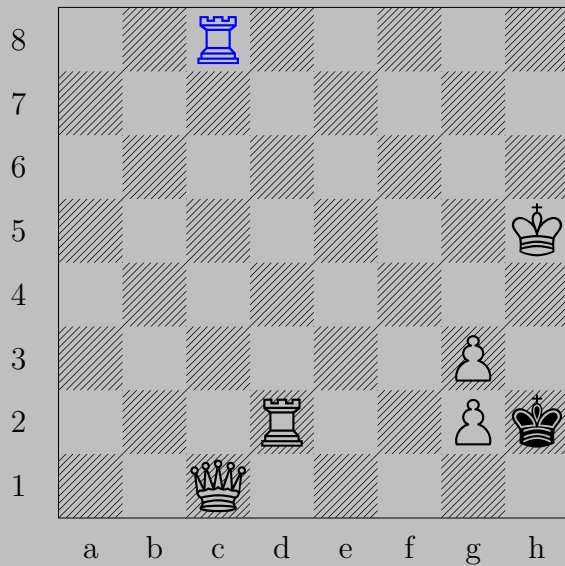


♖d5

If ♞×d5, ♚c4. If ♚f5, ♞d4. If ♞e4, ♞c7.



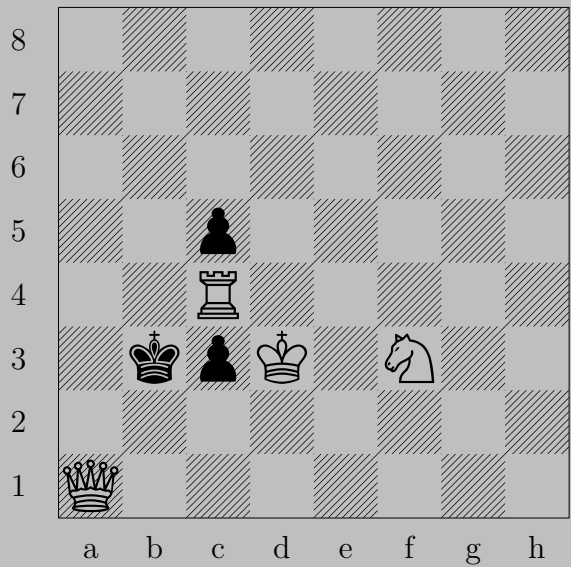
2106



c8, xg3

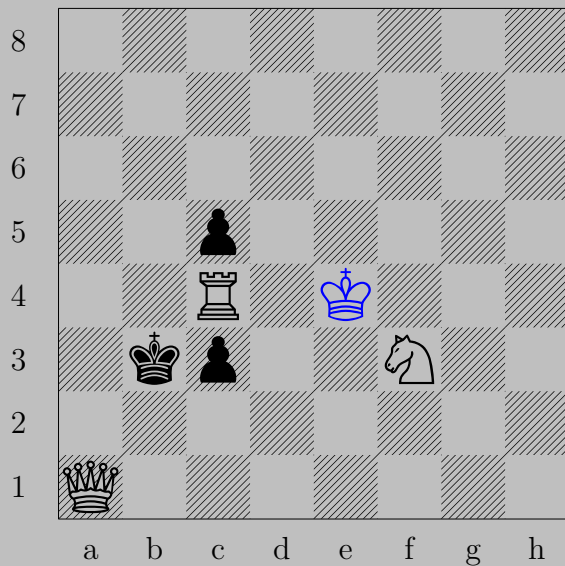
c7

2107



A. Kraemer, 1925

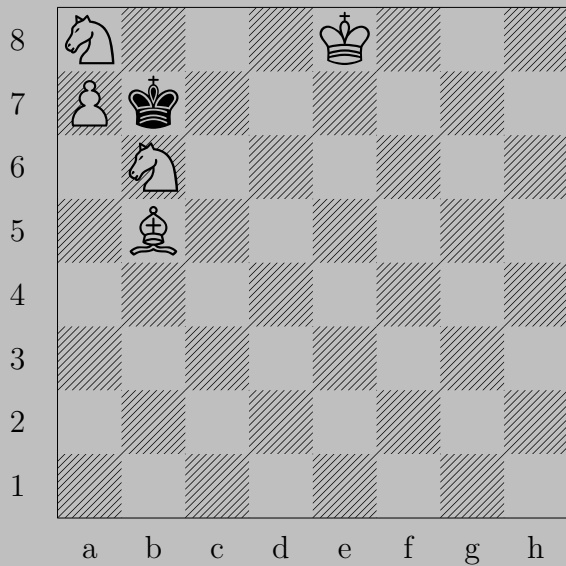
2107

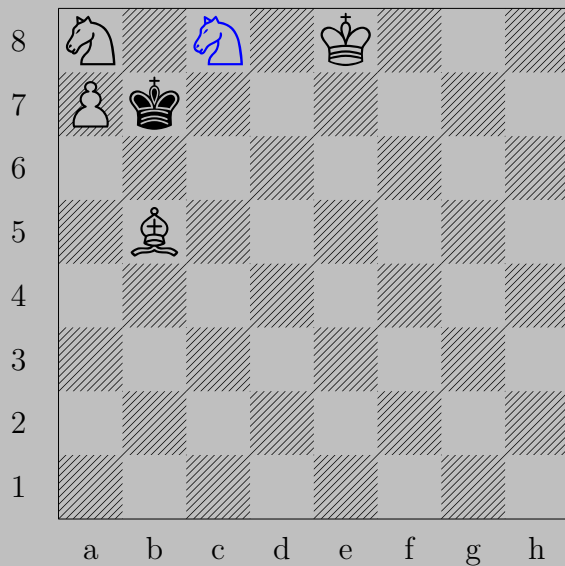


♔e4

If ♕xc4, ♖a4. If ♕c2, ♖xc3. If ♖c2, ♗d2.



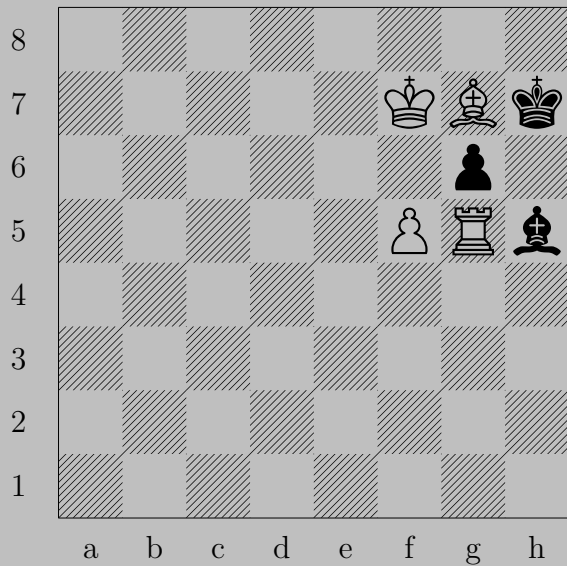




$\text{♞c8}$

If  $\text{♚}\times\text{a8}$ ,  $\text{♜c6}$ . If  $\text{♚}\times\text{c8}$ ,  $\text{♜a6}$ .

2109



V. Krivenko, 1976

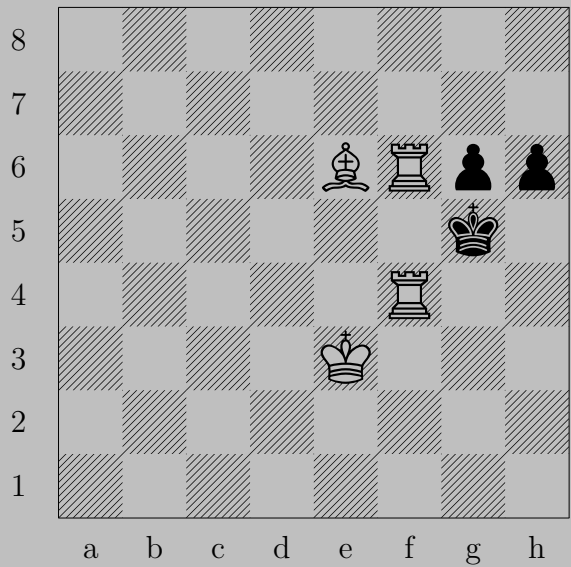


$\text{♖} \times g6$

If  $\text{♕} \times g6+$ ,  $\text{♜} \times g6$ .

Otherwise,  $\text{♖} \text{h}6$ .

2110



L. Kubbel, 1940

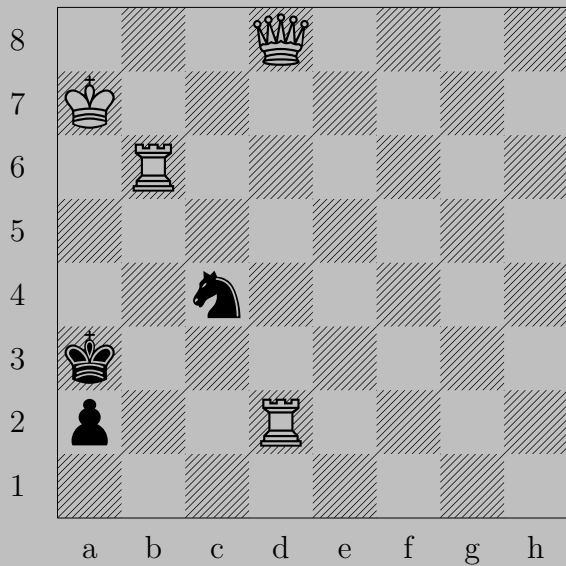
2110



♗f7

If ♖h5, ♙(f6)f5. If ♜h5, ♙×g6.

2111



L. Kubbel, 1908

2111



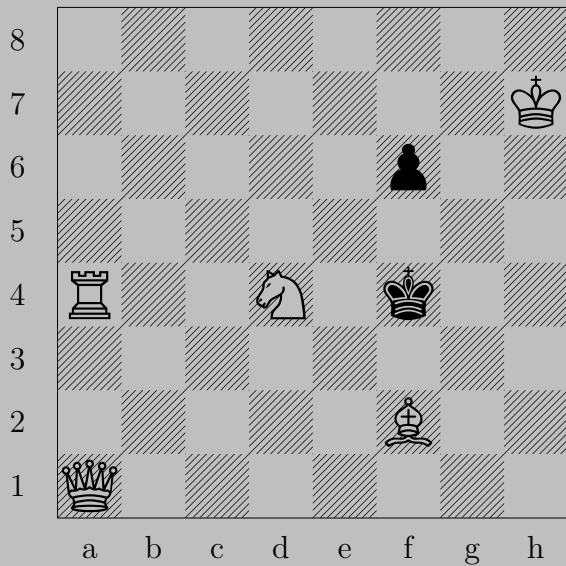
♔d4

If ♕a1, ♔×a1. If ♔a4, ♖×a2. If ♞×b6, ♖d3.

Otherwise, ♔b4.



2112



L. Kubbel, 1909

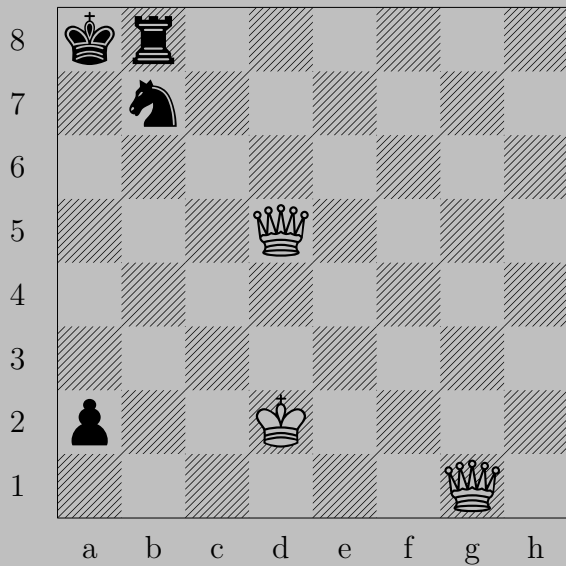
2112



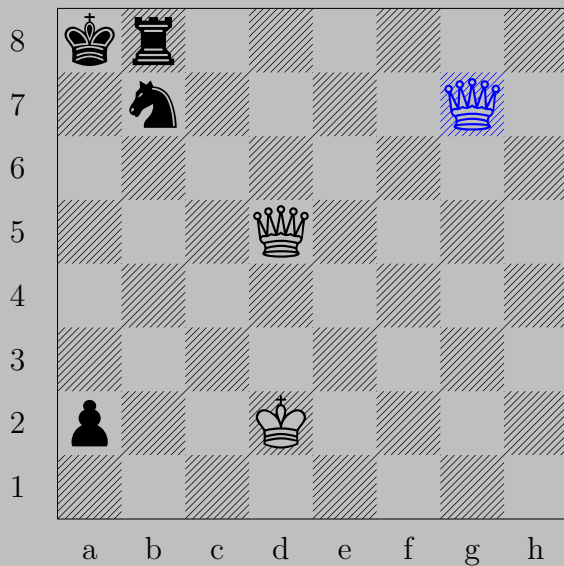
♚h1

If ♖f5, ♘f3. If ♔e5, ♙g3. If ♔g4 or ♔g5, ♚h4.

2113



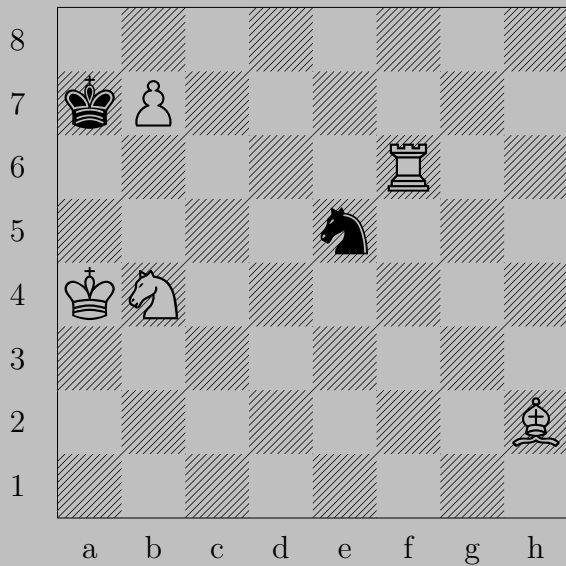
L. Kubbel, 1933



$\text{♔g9}$

If  $\text{♚a1}$ ,  $\text{♕xa1}$ . If  $\text{♔a7}$ ,  $\text{♕a5}$ . If  $\text{♖c8-h8}$ ,  $\text{♕(g7)xb7}$ .

2114



L. Kubbel, 1911

2114

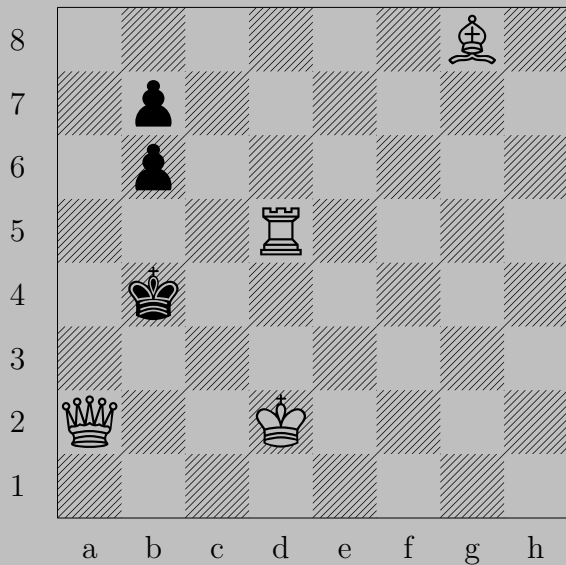


$\text{Rf7}$

If  $\text{Kb8}$ ,  $\text{Nc6}$ . If  $\text{Kb6}$ ,  $\text{Bg1}$ .

Otherwise,  $\text{Bb8}$ ( $\text{K}$ ).

2115



L. Kubbel, 1940

2115

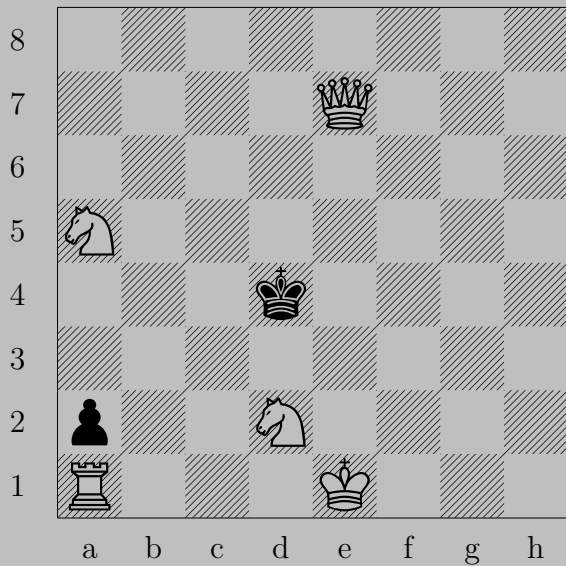


♙a7

If ♟b3, ♖b5. If ♔c4, ♙a4. If ♘b5, ♖d4.

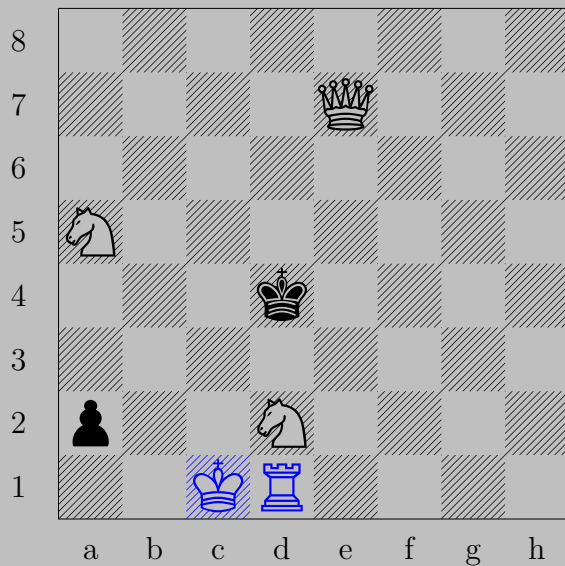


2116



L. Kubbel, 1939

2116

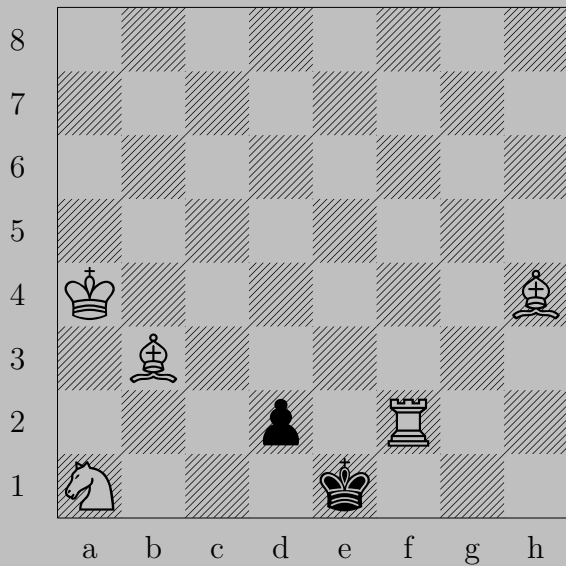


O-O-O

If ♔c3, ♖e4.

Otherwise, ♖b1.

2117



L. Kubbel, 1939

2117



$\text{♔c4}$

If  $\text{♕d1}(\text{♔})+$ ,  $\text{♖c2}$ . If  $\text{♕d1}(\text{♗})$ ,  $\text{♗c2}$ . If  $\text{♔d1}$ ,  $\text{♖f1}$ .

2118



L. Kubbel, 1941

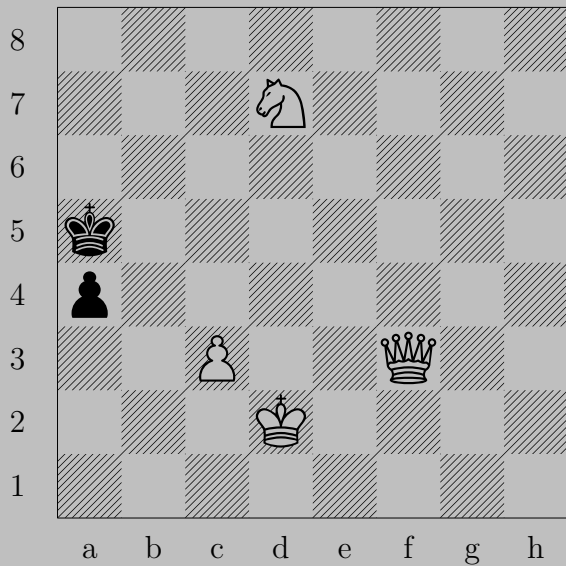
2118



♔h1

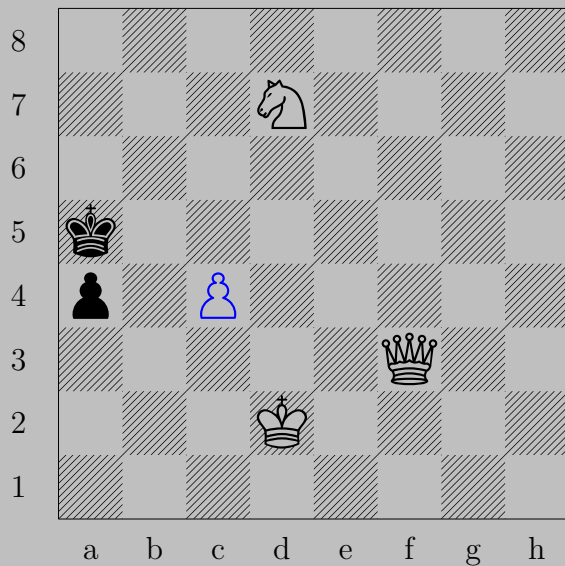
If ♔h3, ♕f5. If ♖f1 or ♖f3, ♔h5.

2119



L. Kubbel, 1908

2119

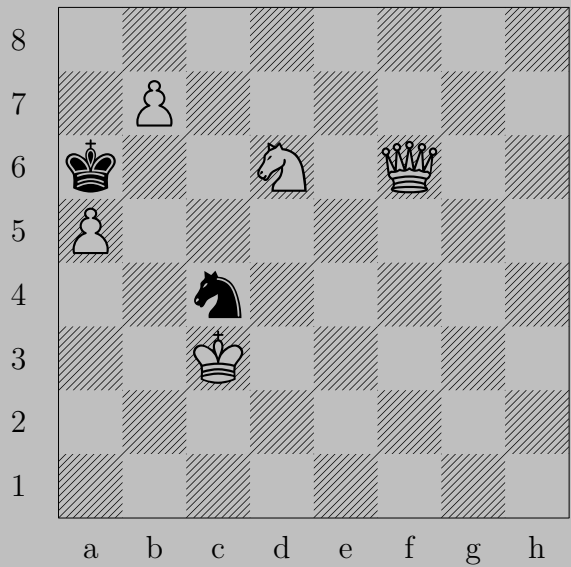


$\Delta c4$

If  $\Delta a3$ ,  $\text{Queen} \times a3$ . If  $\text{King} a6$ ,  $\text{Queen} a8$ . If  $\text{King} b4$ ,  $\text{Queen} c3$ .



2120



L. Kubbel, 1929

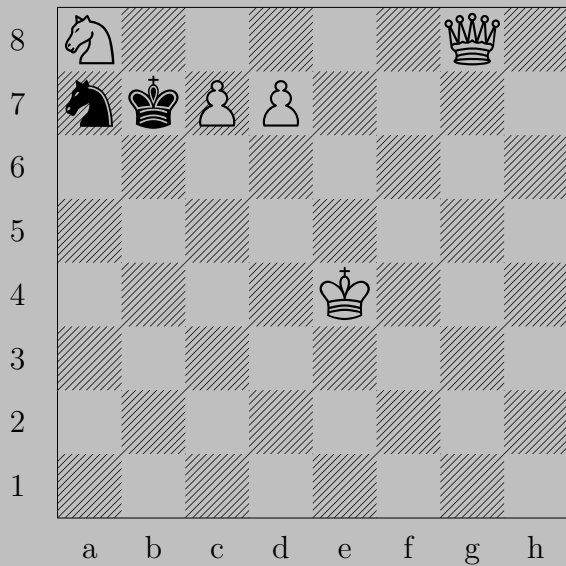


♔d4

If ♔xa5, ♔a7. If ♞xa5, ♖b8(♞).

If ♞b6, ♔xb6. Otherwise, ♔b6.

2121



L. Kubbel, 1909

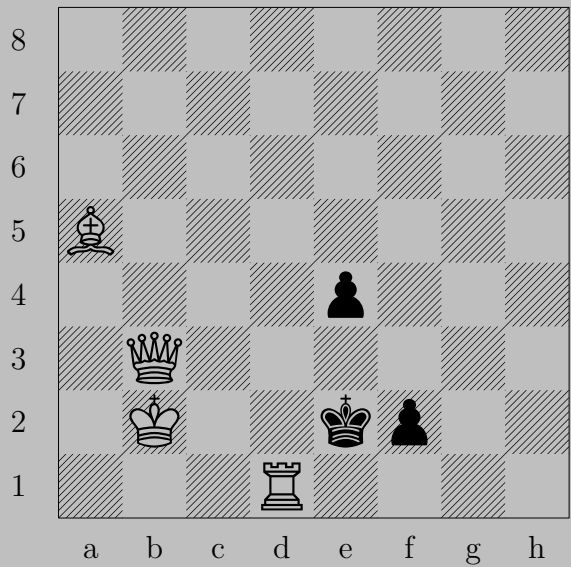
2121



♙a2

If ♙×a8 or ♘c6 or ♘b5, ♖c8(♙). If ♙c6, ♙d5. If ♘c8, ♖d8(♘).

2122



L. Kubbel, 1958

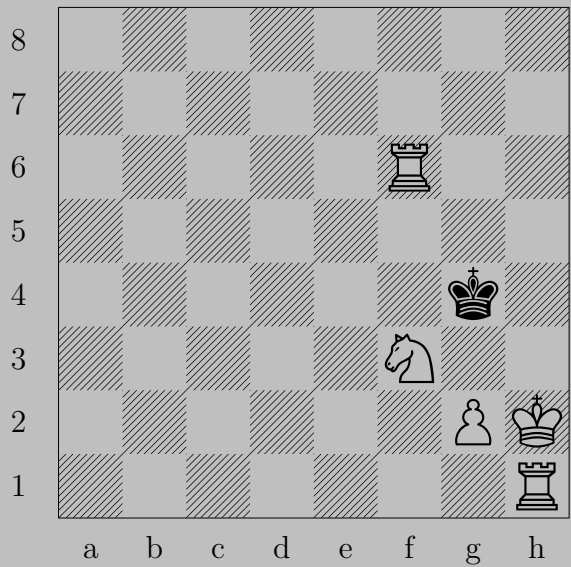
2122



g3

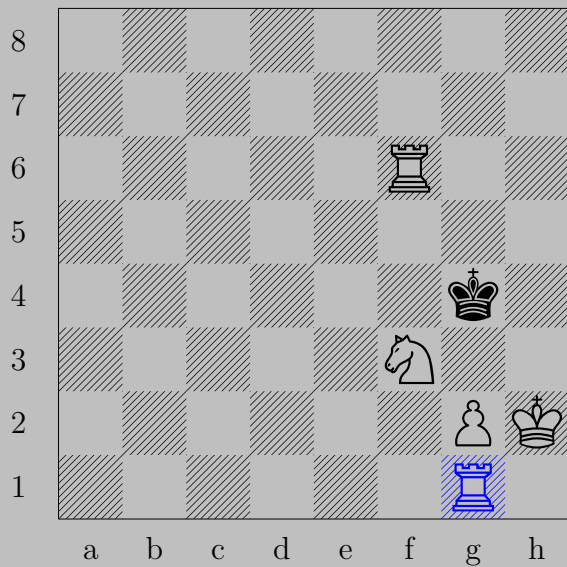
If x d1 or e3, g4. If f1() , d2. If f1() , e1.

2123



L. Kubbel, 1958

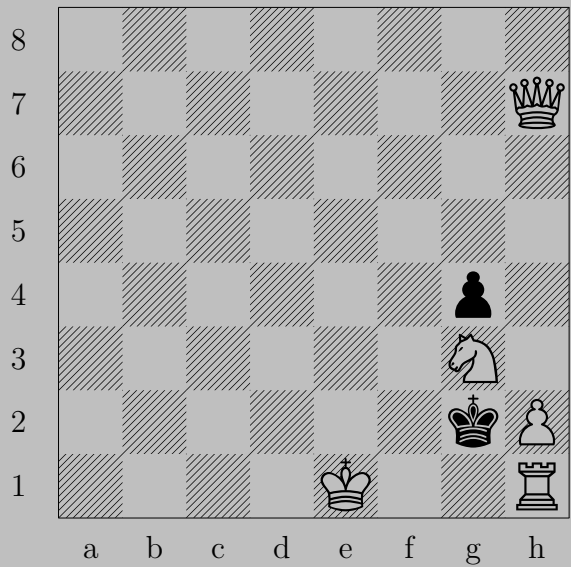
2123



$\text{♖g1}, \text{♔h5}$   
 $\text{♙g4}$

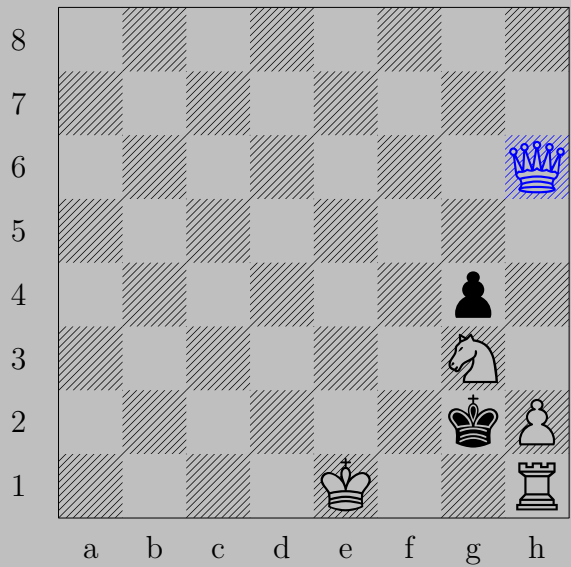


2124



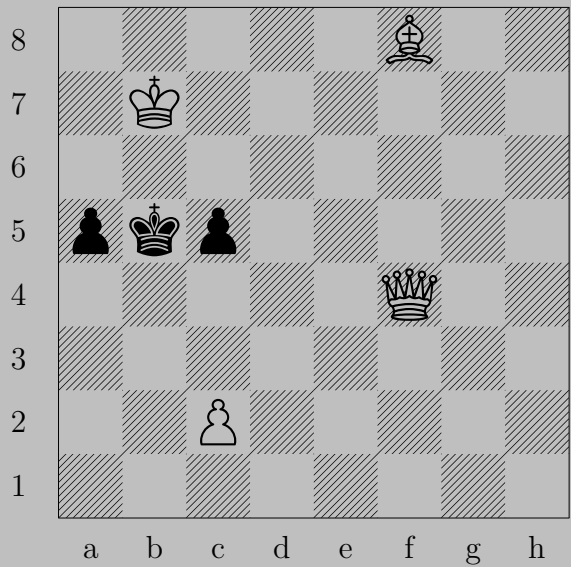
L. Kubbel, 1940

2124



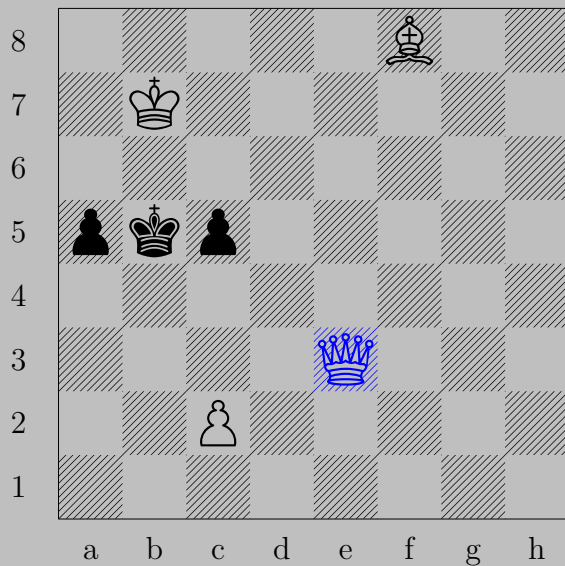
♙h6, ♔f3  
O-O

2125



L. Kubbel, 1941

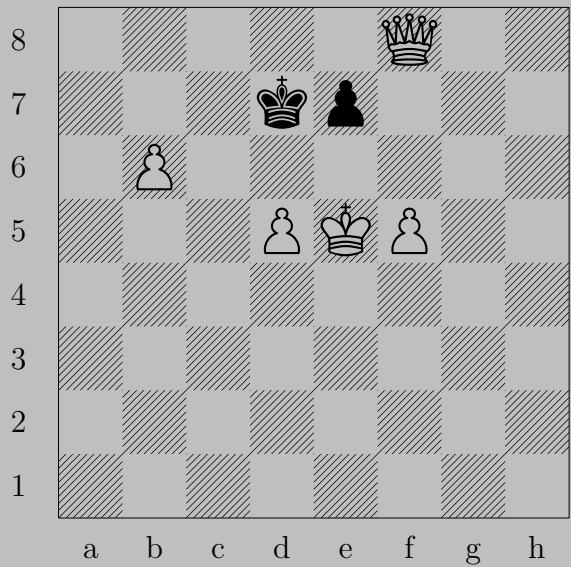
2125



♙e3

If ♔a4 or ♔b4, ♙b3. If ♔c4 or ♖a4, ♙xc5. If ♖c4, ♙e8.

2126



L. Kubbel, 1941

2126



♔d4

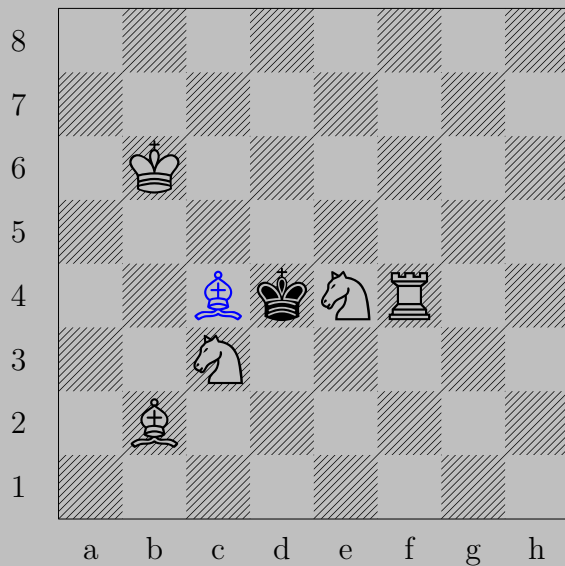
If ♔d6, ♚d8. If ♖e6 or ♖e5+, ♖(f5)×e6.

2127



G. Kunos, 1937

2127

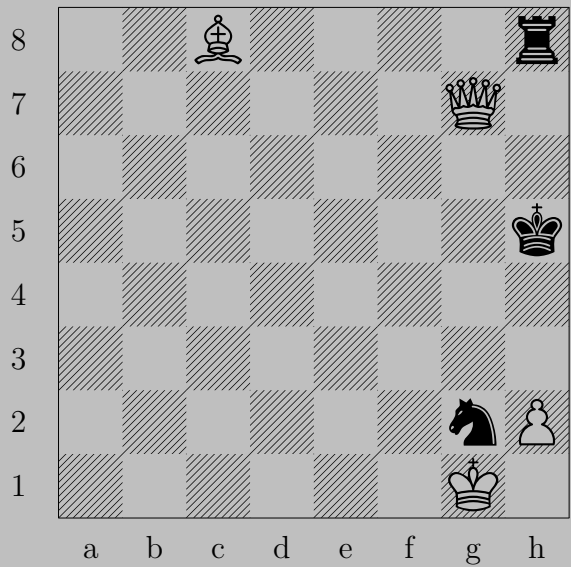


♔c4

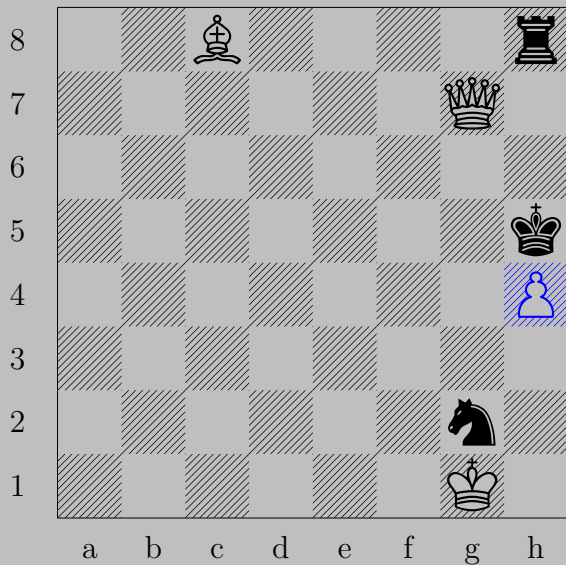
If ♔xc4, ♖c5. If ♔e3, ♖d5. If ♔e5, ♖e2.



2128



V. V. Kuzmichev, 1988



$\text{Bh4}$

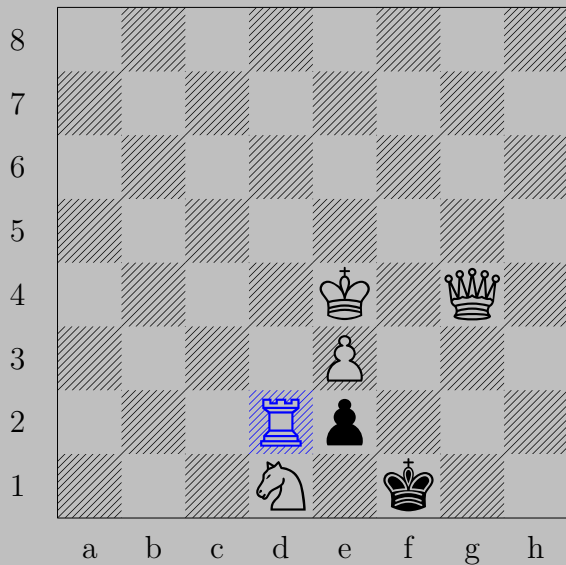
If  $\text{Kxh4}$ ,  $\text{Kg4}$ . If  $\text{Nhx4}$ ,  $\text{Bg4}$ . If  $\text{Rg8}$ ,  $\text{Kh7}$ .

Otherwise,  $\text{Kg5}$ .

2129



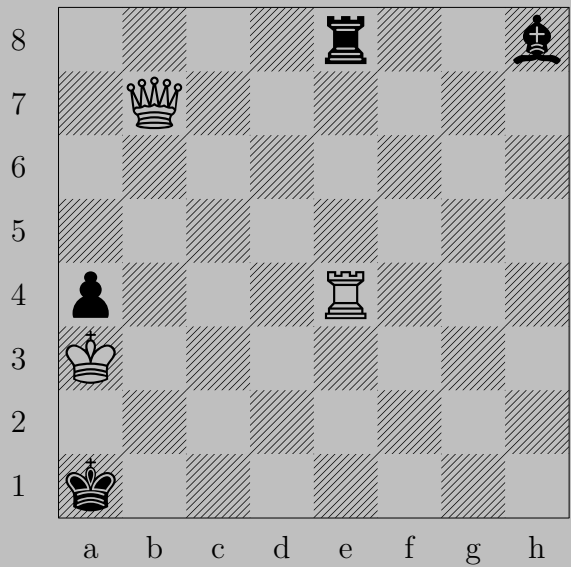
V. V. Kuzmichev, 1988



$\text{♖d2}$

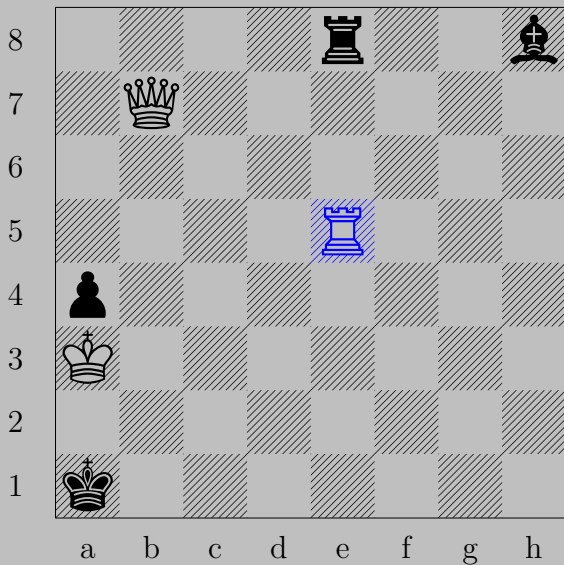
If  $\text{♗xd1}$ ,  $\text{♕xd1}$ . If  $\text{♗e1(♕)}$ ,  $\text{♕g2}$ . If  $\text{♗e1(♞)}$ ,  $\text{♖f2}$ . If  $\text{♗e1}$ ,  $\text{♕xe2}$ .

2130



V. V. Kuzmichev, 1987

2130

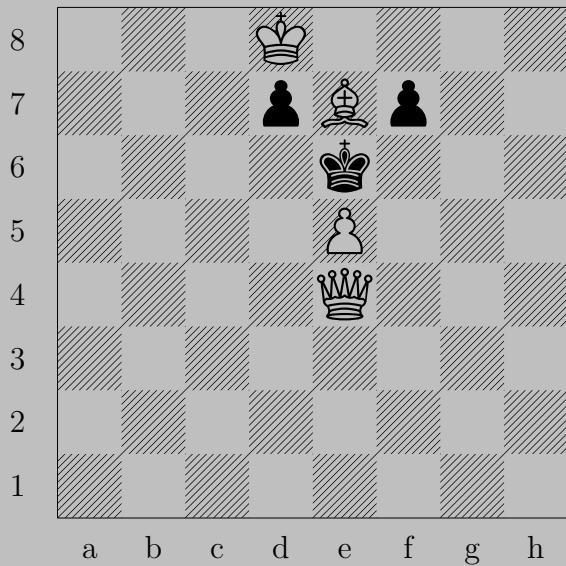


$\text{R}e5$

If  $\text{B} \times e5$ ,  $\text{Q}h1$ . If  $\text{R}b8$ ,  $\text{R}e1$ .

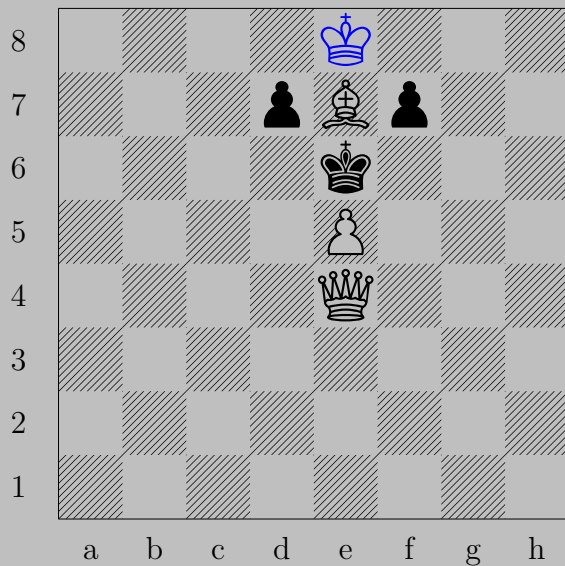
Otherwise,  $\text{Q}b2$ .

2131



An. Kuznetzov, 1981

2131

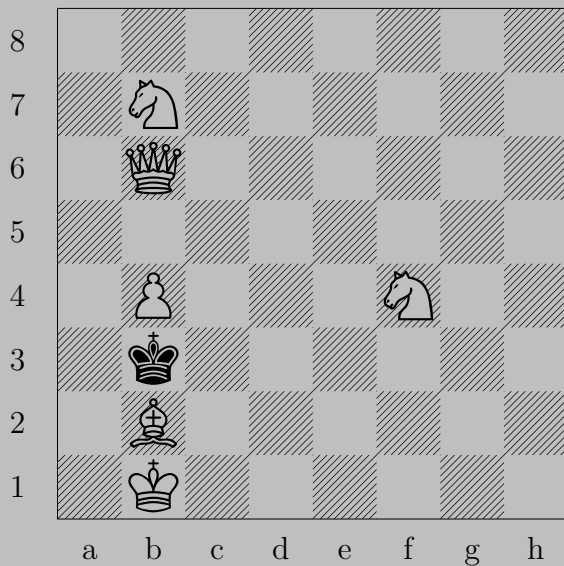


♔e8

If ♖d6 or ♖d5, ♖×d6. If ♖f6 or ♖f5, ♖×f6.

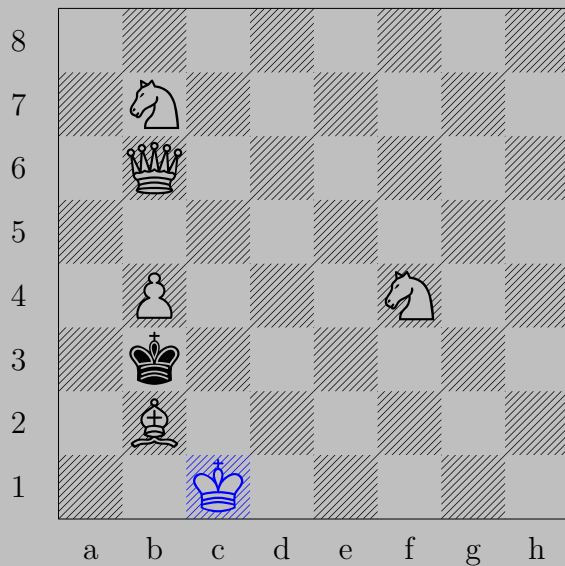


2132



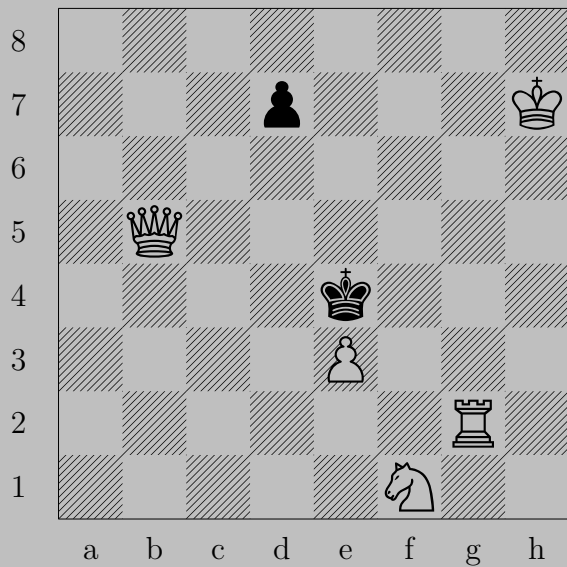
An. Kuznetzov - V. Chepizhny, 1971

2132



♔c1

If ♕a2, ♖e6. If ♕a4, ♞c5. If ♕c4, ♞a5.

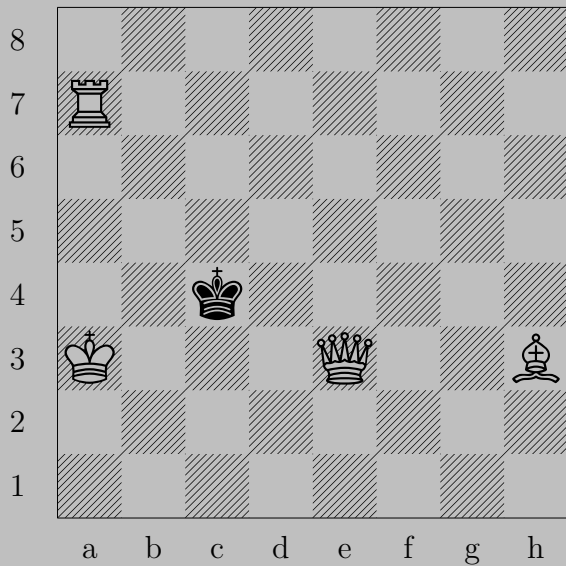




$\text{Rd2}$

If  $\text{Kg3}$ ,  $\text{Qf5}$ . If  $\text{Pd6}$ ,  $\text{Qd5}$ . If  $\text{Pd5}$ ,  $\text{Qxd5}$ .

2134



V. Kviatovsky, 1977

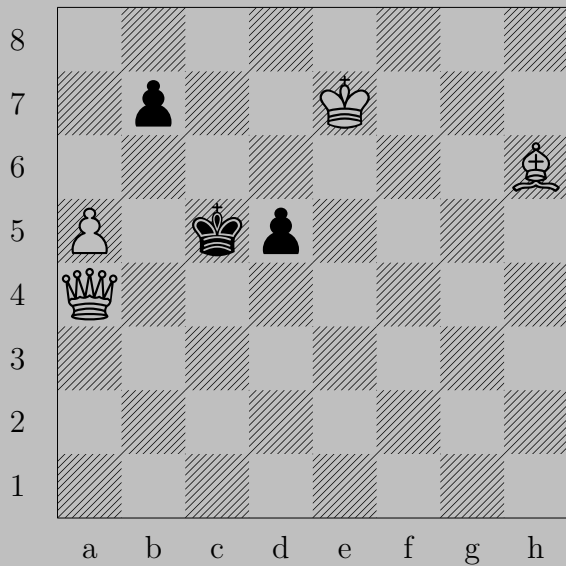
2134



♖a6

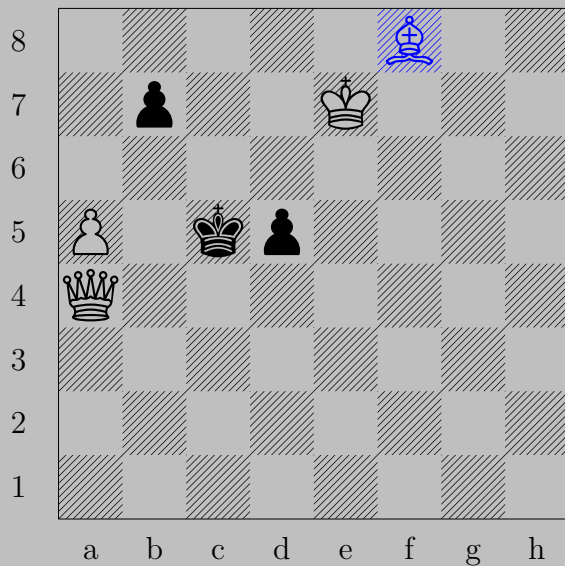
If ♔b5, ♕f1. If ♔d5, ♕e6.

2135



V. Kviatovsky, 1977

2135

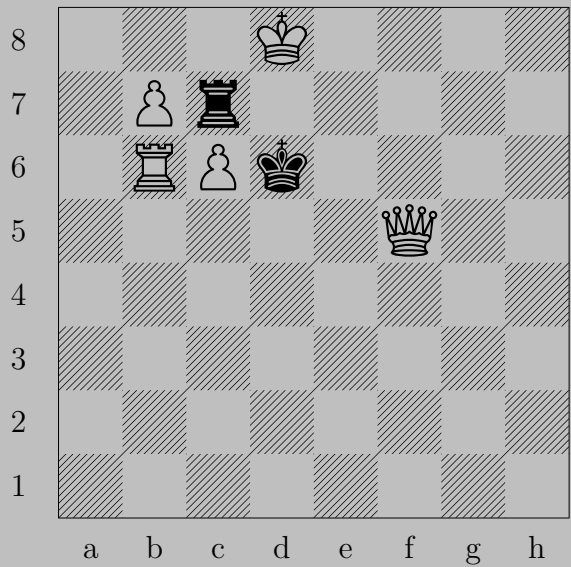


♔f8

If ♖b6 or ♖b5, ♔d7. If ♖d4, ♔e6.



2136



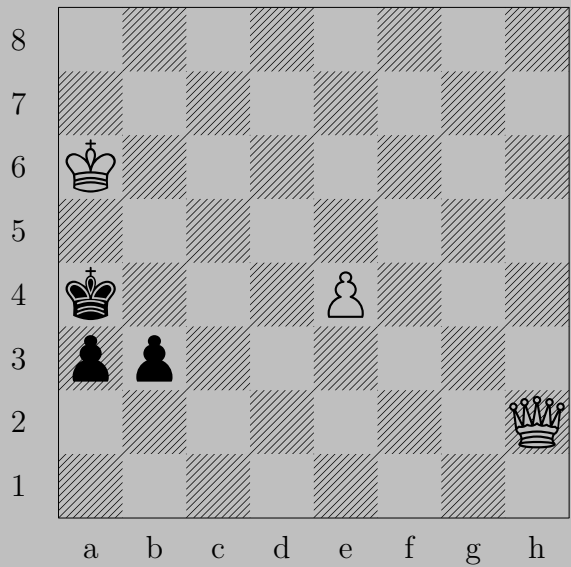
V. Kviatovsky, 1977



$\text{R}a6$

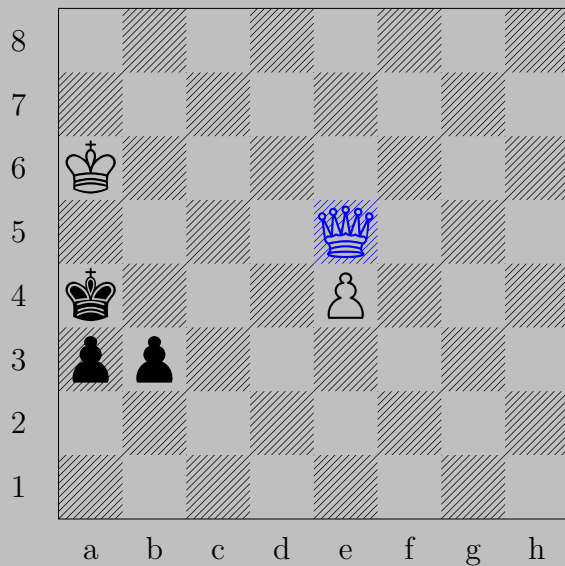
If  $\text{R}xb7$ ,  $\text{P}xb7$ . If  $\text{R}xc6$ ,  $\text{P}b8$  ( $\text{Q}$ ). If  $\text{R}d7+$ ,  $\text{P}xd7$ . If  $\text{R}c8+$ ,  $\text{P}xc8$  ( $\text{Q}$ ).  
Otherwise,  $\text{P}c7$ .

2137



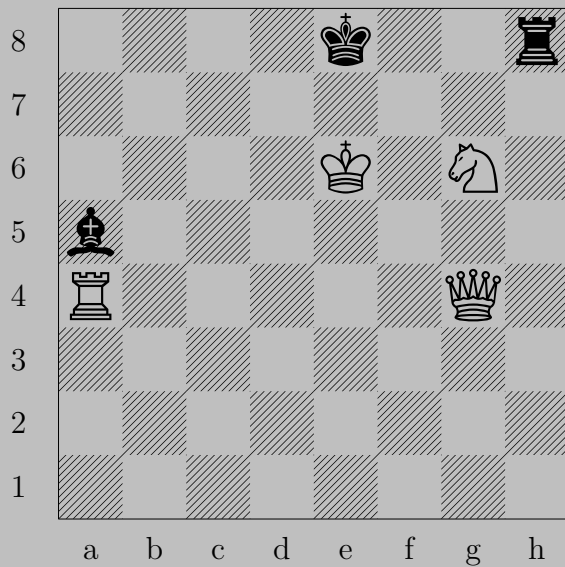
H. Laaksonen, 1944

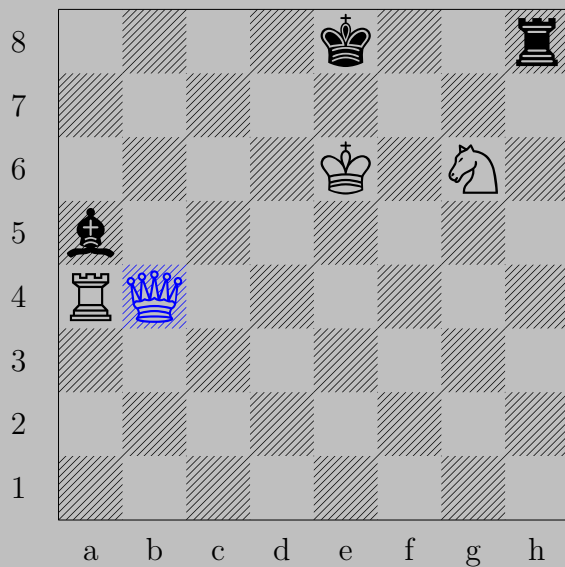
2137



♙e5

If ♖a2, ♙a5. If ♖b2, ♙b5. If ♔b4, ♙d4.



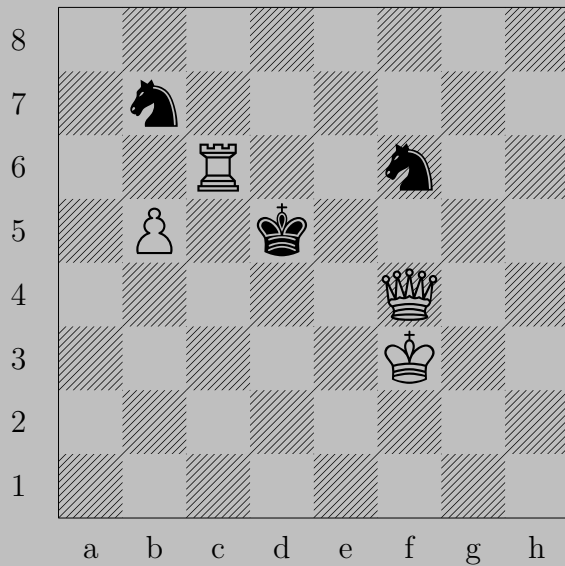


♙b4

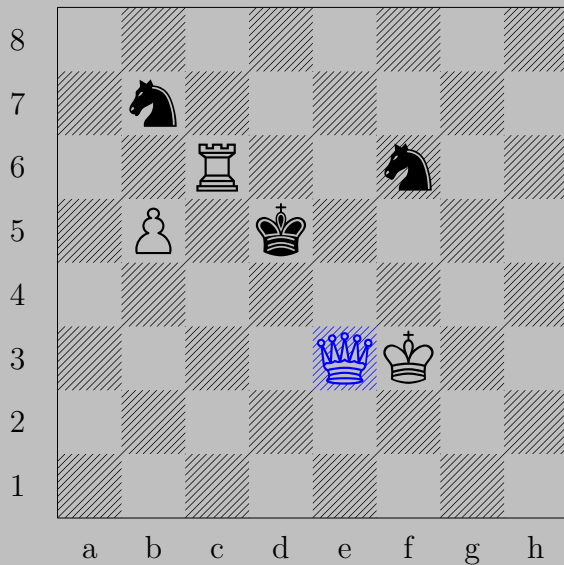
If ♔d8, ♙b8. If ♗x b4, ♖a8. If ♗d8, ♙b5. If ♖h7, ♙f8.

Otherwise, ♙e7.

2139



H. Laaksonen, 1946



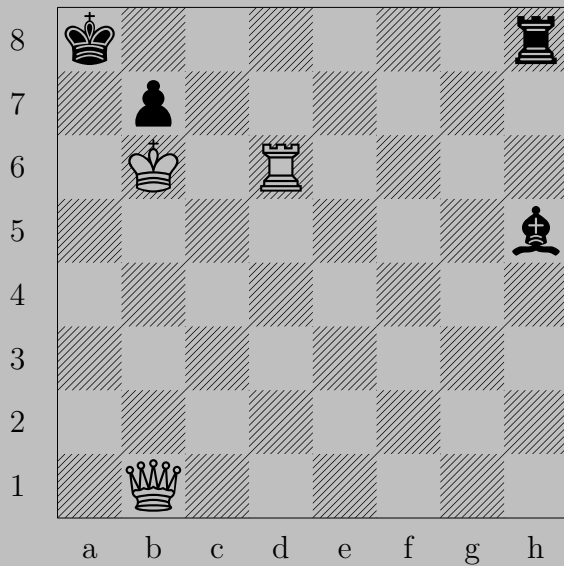
♙e3

If ♘c5, ♙xc5. If ♘a5 or ♘d6 or ♘d8, ♙c5.

If ♘e4, ♙xe4. Otherwise, ♙e4.

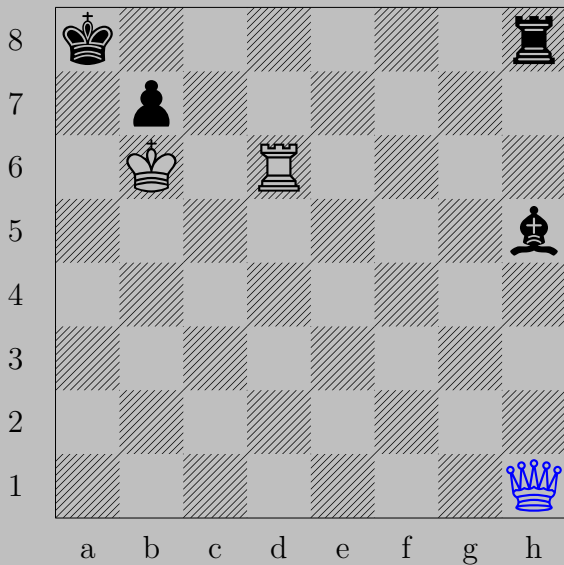


2140



H. Laaksonen, 1945

2140

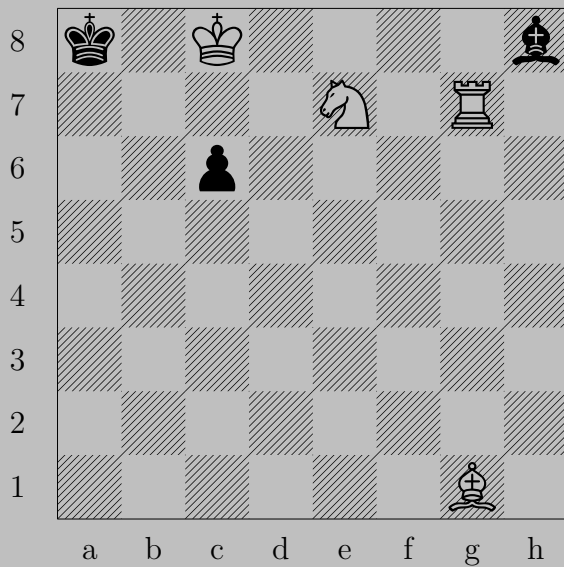


♔h1

If ♘f3, ♔×h8. If ♖b8, ♔a1. If ♖h7, ♖d8.

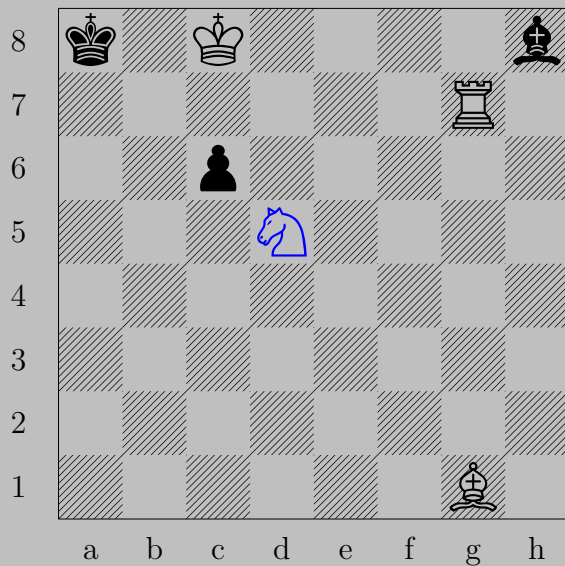
Otherwise, ♔×b7.

2141



H. Laaksonen, 1950

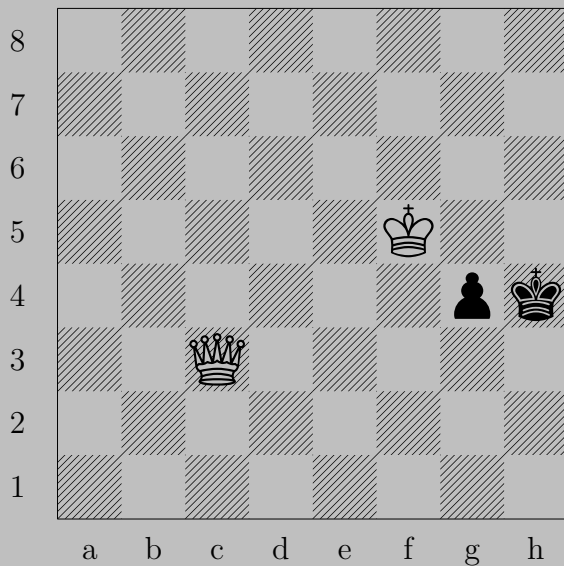
2141



$\text{♞d5}$

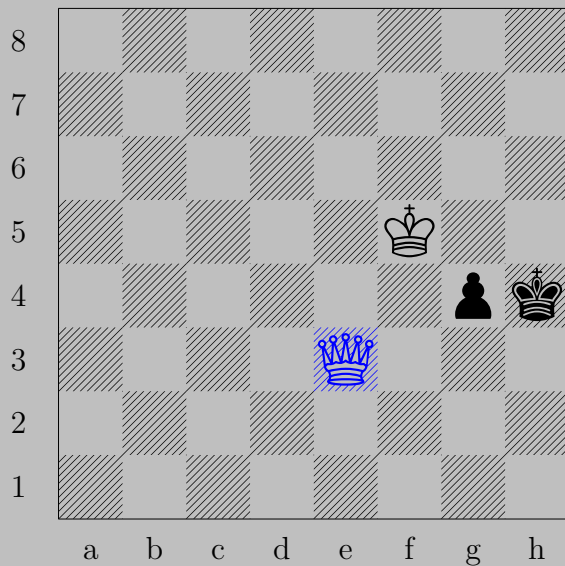
If  $\text{♜xd5}$ ,  $\text{♖a7}$ . If  $\text{♜xg7}$ ,  $\text{♞c7}$ . If  $\text{♜c5}$ ,  $\text{♞b6}$ .

2142



H. Laaksonen - E.C. Mortimer, 1922

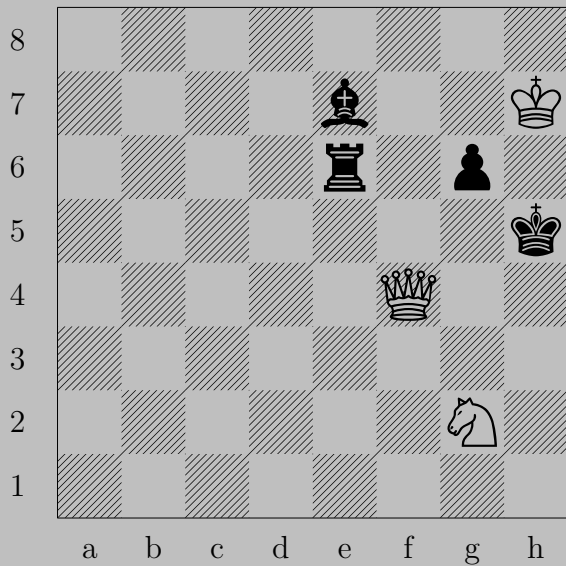
2142



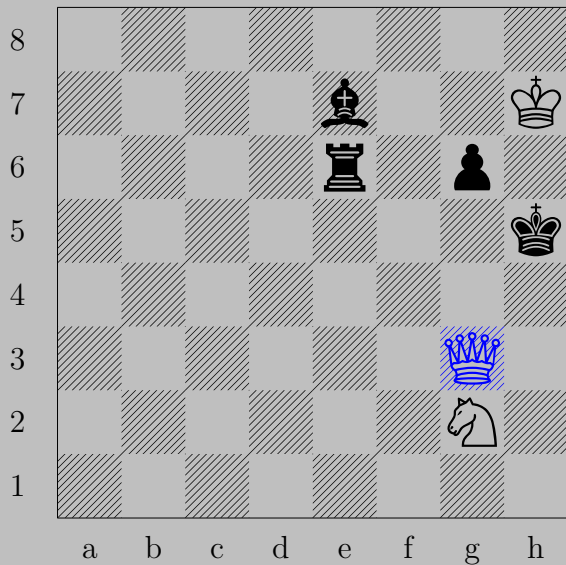
♔e3

If ♖g3, ♕h6. If ♔h5, ♕g5.

2143



B. Larsson, 1952



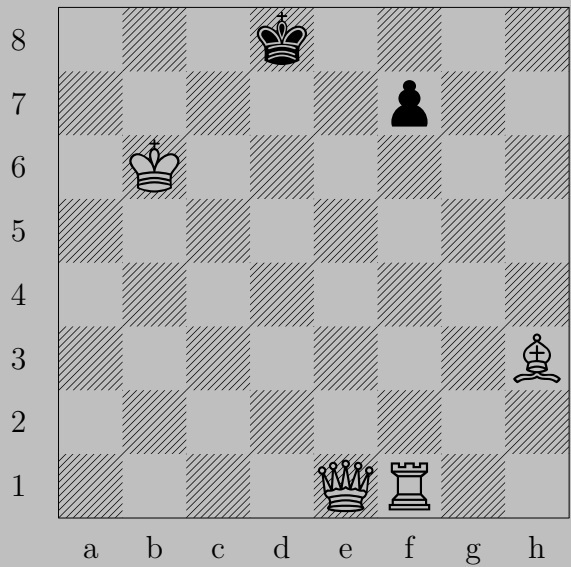
♙g3

If ♘g5, ♙h3. If ♘g5, ♙f3. If ♘d6 or ♖f6, ♙h4. If ♖e4, ♙xg6.

Otherwise, ♘f4.



2144



B. Larsson, 1962

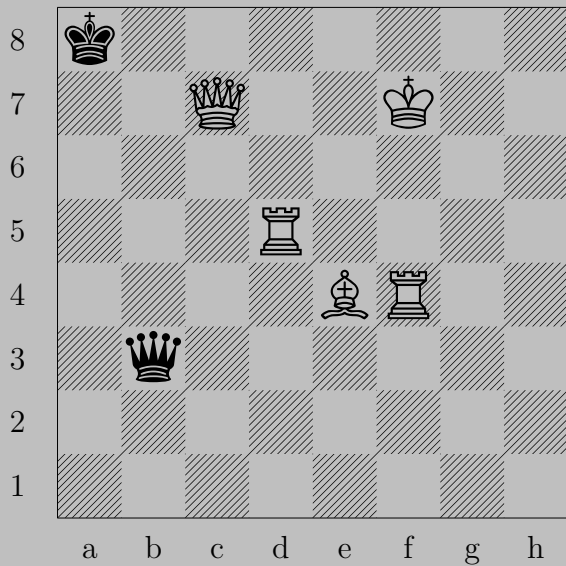
2144



$\text{R}e5$

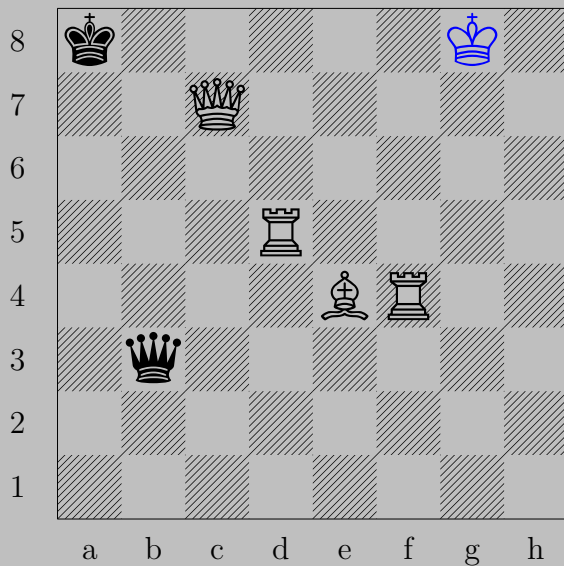
If  $\text{K}c8$ ,  $\text{Q}e8$ . If  $\text{K}d7$  or  $\text{B}f6$ ,  $\text{R}d5$ .

2145



E. Larson-Letzen, 1921

2145

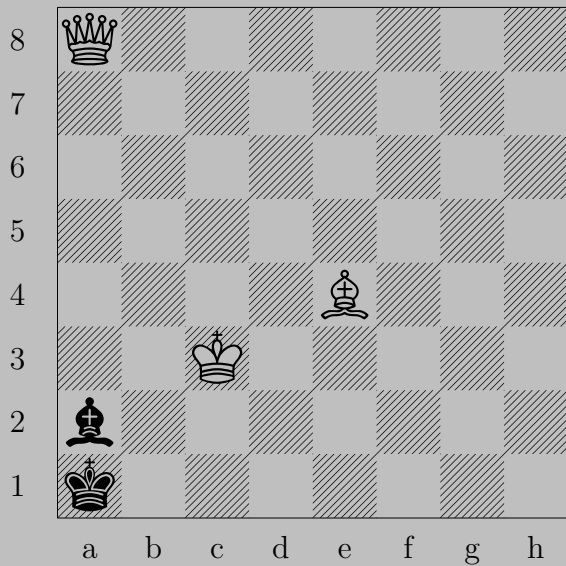


♔g5

If ♕g3+, ♖g5. If ♕x d5+, ♙x d5. If ♕a2 or ♕c4, ♖f8.

Otherwise, ♖d8.

2146



K.A.K. Larsen, 1921

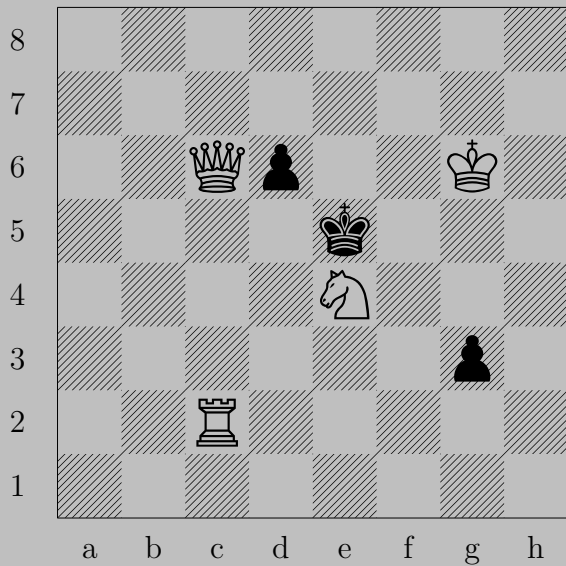
2146



♗b1, ♔x b1

♔h1

2147



G. Latzel, 1956

2147

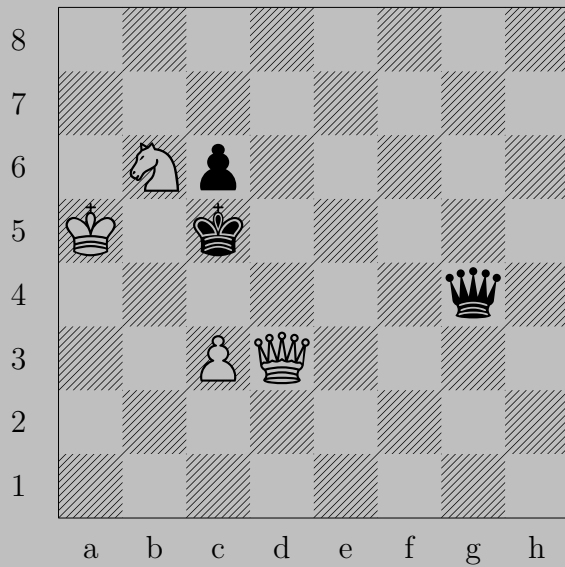


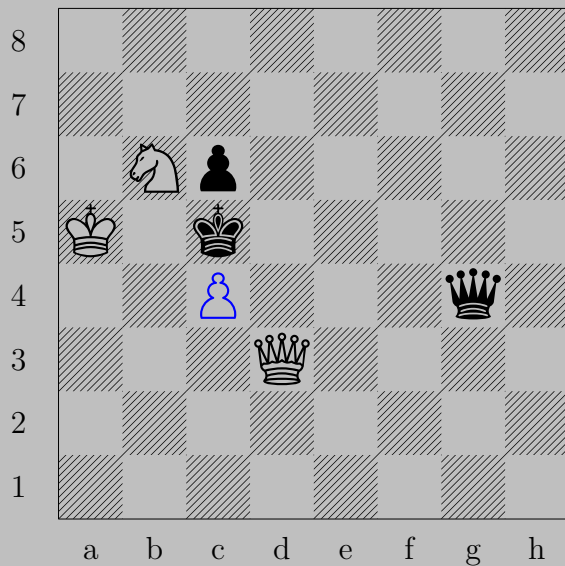
$\text{Ng5}$

If  $\text{Nd5}$ ,  $\text{Qf6}$ .

Otherwise,  $\text{Qe4}$ .





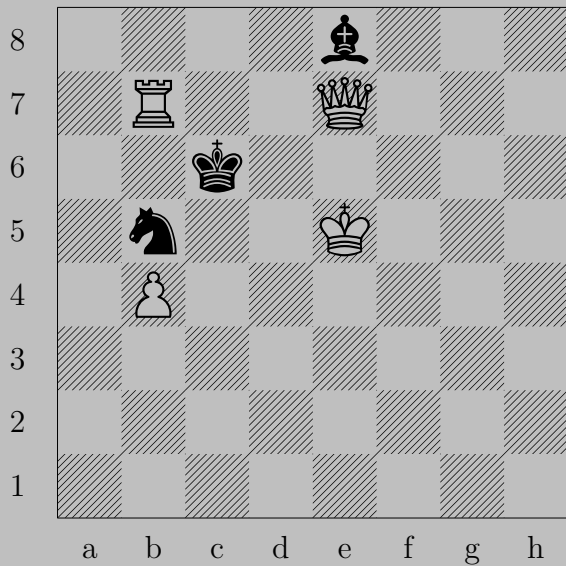


♔c4

If ♕d4, ♕a3. If ♕xc4 or ♕d1, ♞d7.

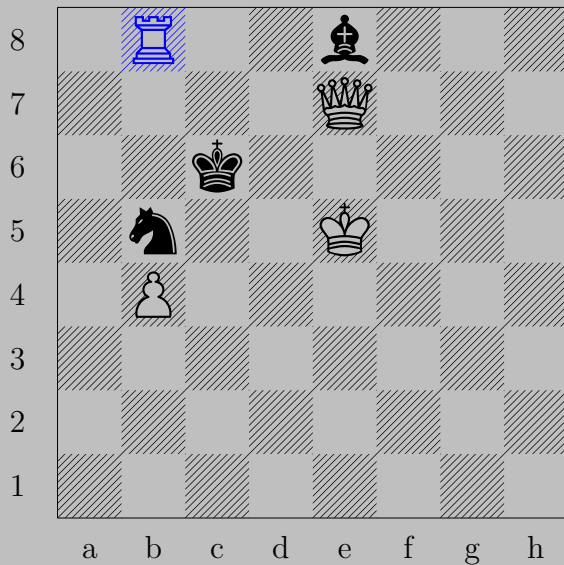
Otherwise, ♞a4.

2149



F. Lazard, 1924

2149

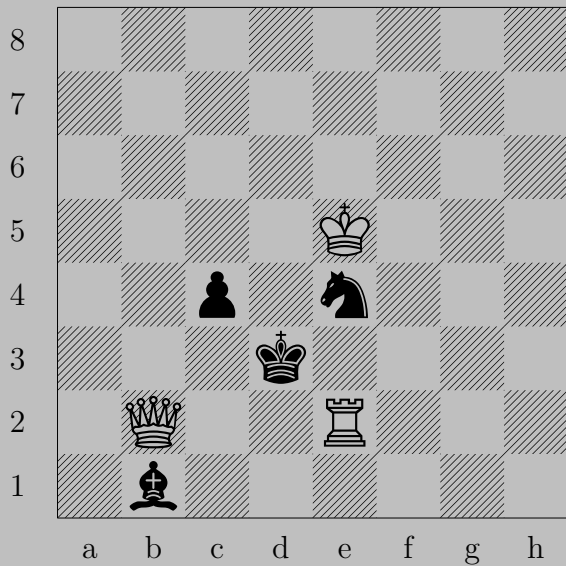


$\text{♖b8}$

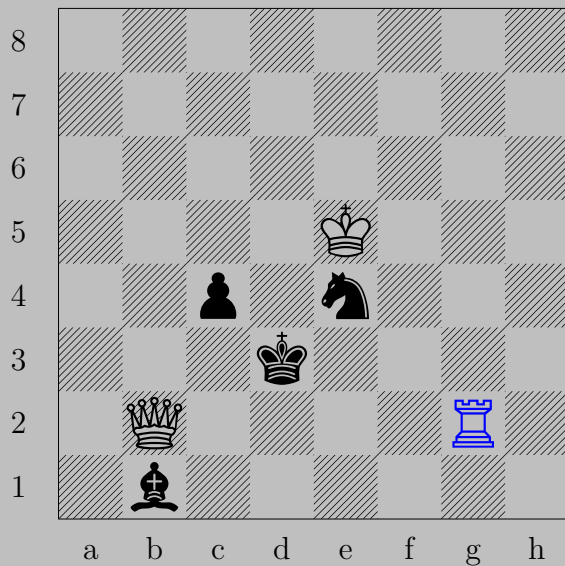
If  $\text{♕d7}$ ,  $\text{♔c5}$ . If  $\text{♞c7}$ ,  $\text{♔d6}$ . If  $\text{♞d6}$ ,  $\text{♔} \times \text{d6}$ .

Otherwise,  $\text{♔b7}$ .

2150



F. Lazard, 1924

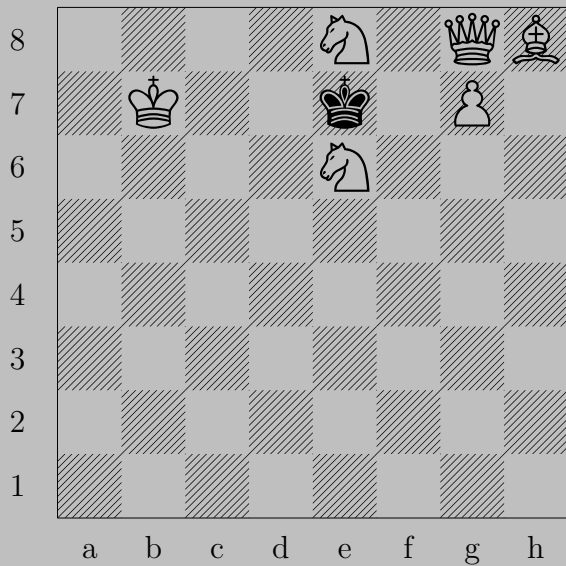


$\text{Rg2}$

If  $\Delta c3$ ,  $\text{Qe2}$ . If  $\text{Nf2}$ ,  $\text{Rg3}$ . If  $\text{Nc3}$ ,  $\text{Qd2}$ . If  $\text{Nd2}$ ,  $\text{Qxd2}$ .

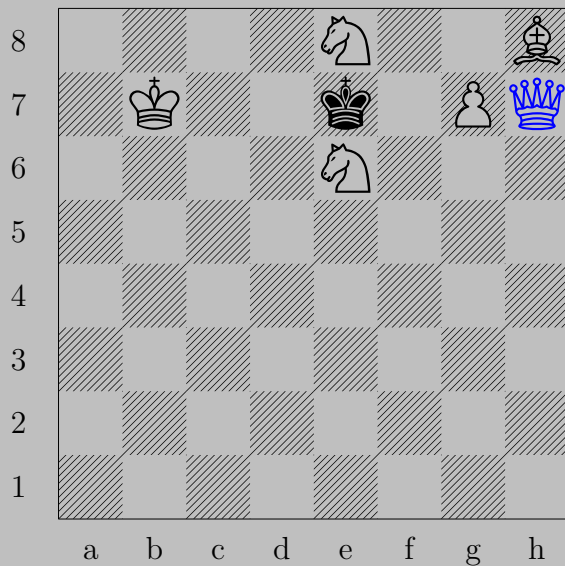
Otherwise,  $\text{Qd4}$ .

2151



F. Lazard, 1926

2151

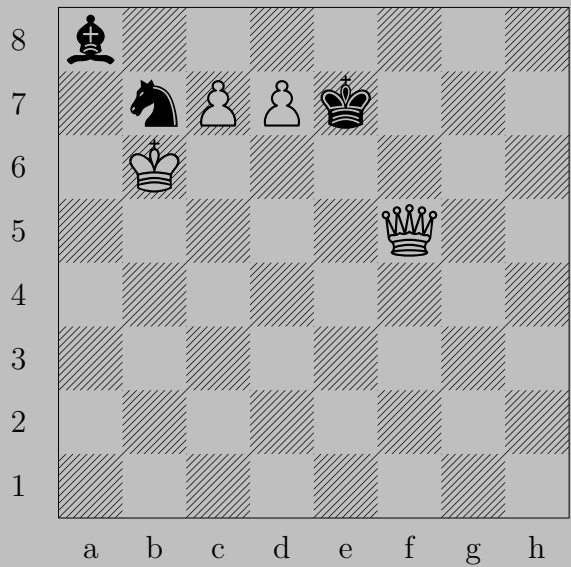


♔h7, ♔xe6 or ♔xe8 or ♔d7 or ♔f7

♟g8(♔)



2152



F. Lazard, 1939

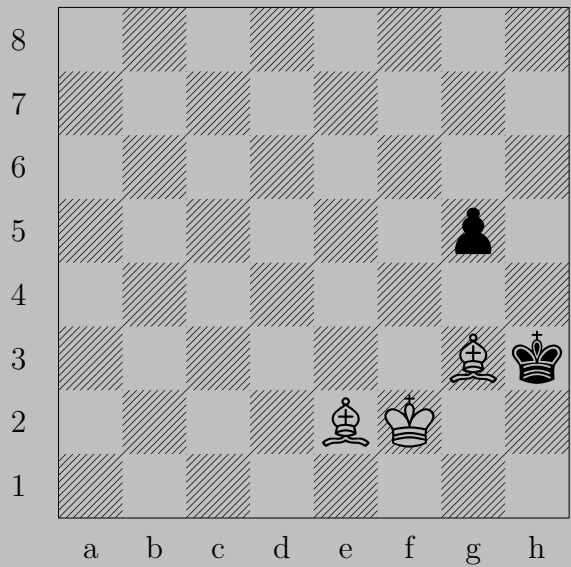


$\triangleleft c8(\text{♔})$

If  $\text{♔}d6$ ,  $\text{♕}(c8)f8$ . If  $\text{♞}d8$ ,  $\text{♕}(c8)c5$ .

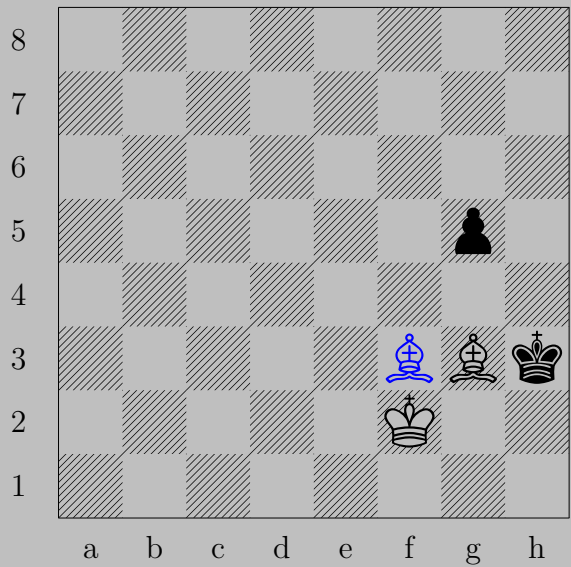
Otherwise,  $\triangleleft d8(\text{♕})$

2153



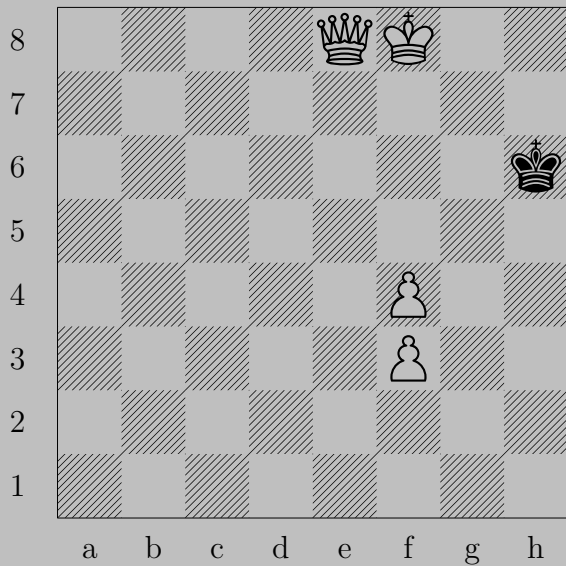
F. Lazard, 1926

2153



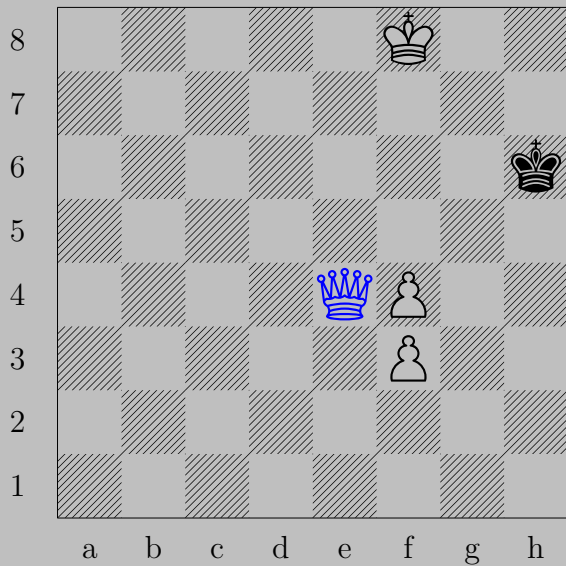
♔f3, ♖g4  
♔g2

2154



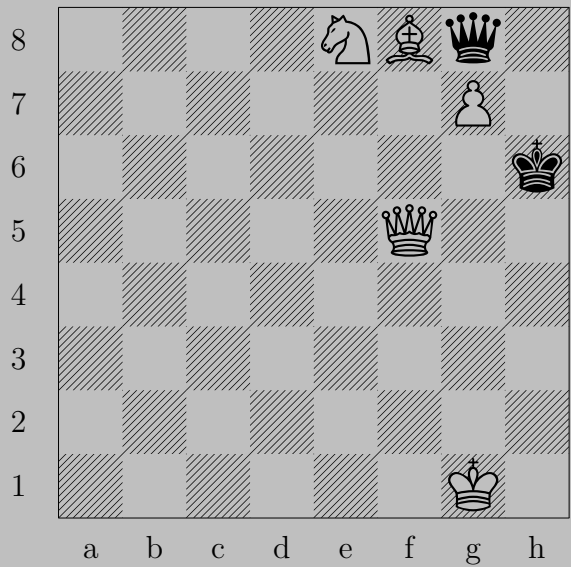
F. Lazard, 1926

2154



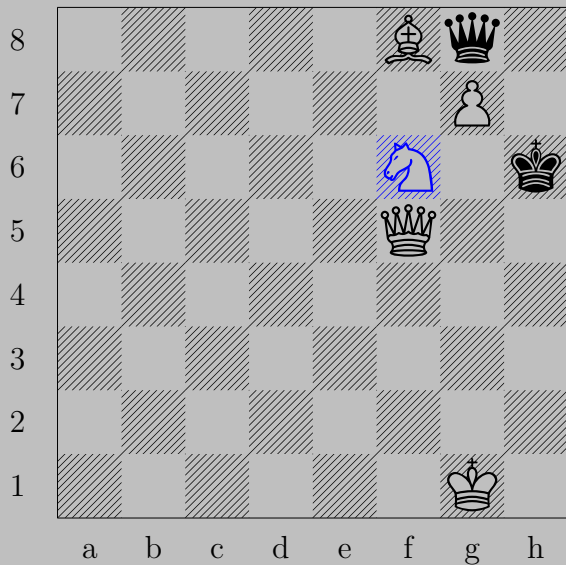
♔d4, ♕h5  
♔h7

2155



F. Lazard, 1926

2155



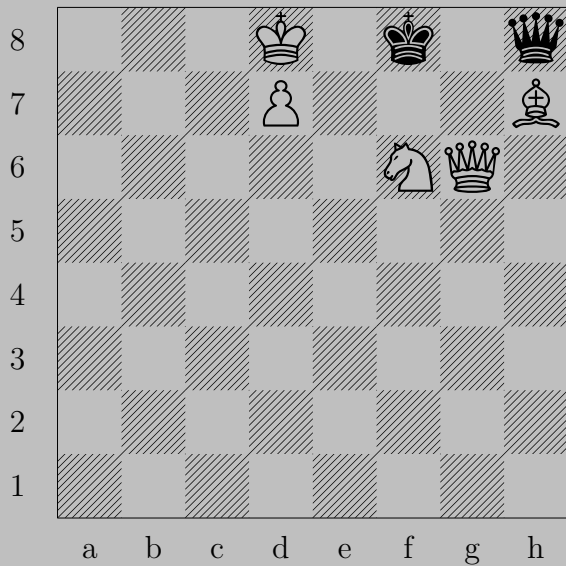
$\text{Nf6}$

If  $\text{Qxf8}$ ,  $\text{Bxf8(Q)}$ . If  $\text{Qc4}$ ,  $\text{Bg8}$ .

Otherwise,  $\text{Ng4}$ .

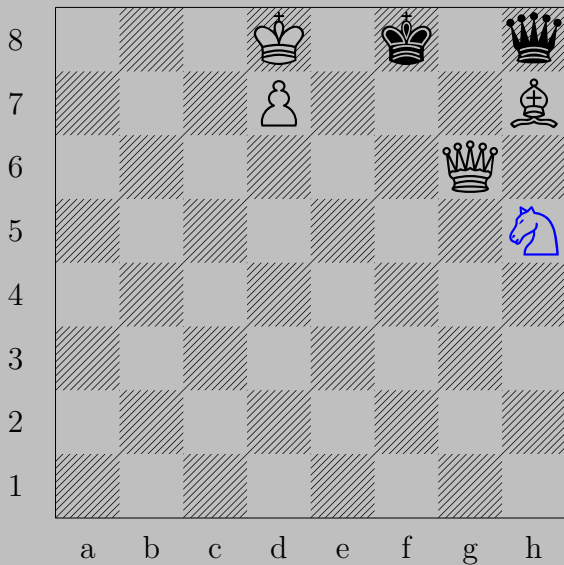


2156



F. Lazard, 1926

2156

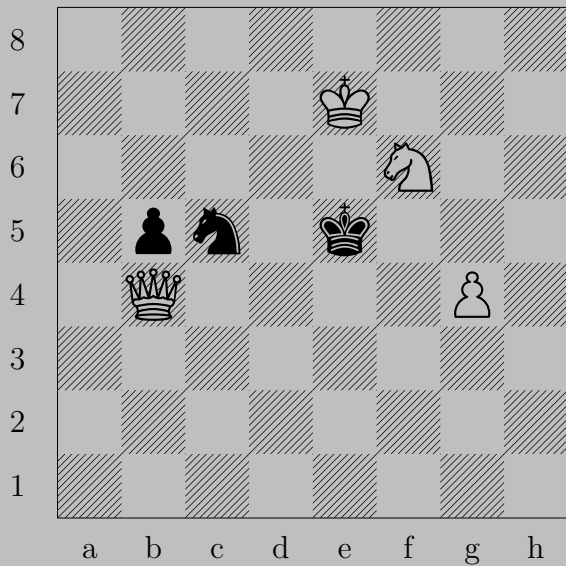


♞h5

If ♔e5, ♔g8. If ♔f6+, ♔×f6.

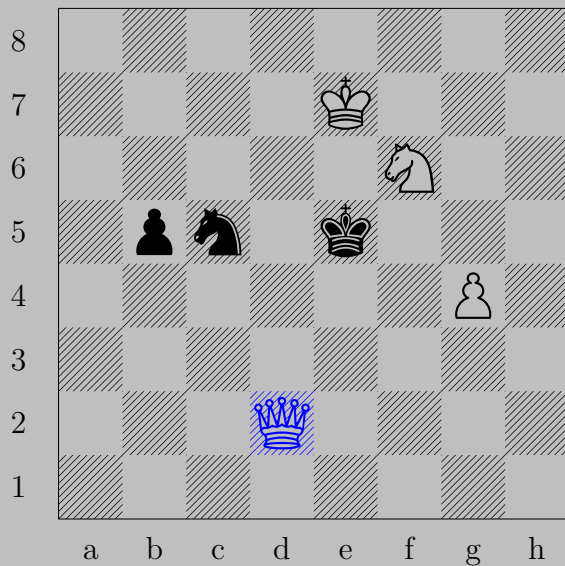
Otherwise, ♔e8.

2157



F. Lazard, 1935

2157

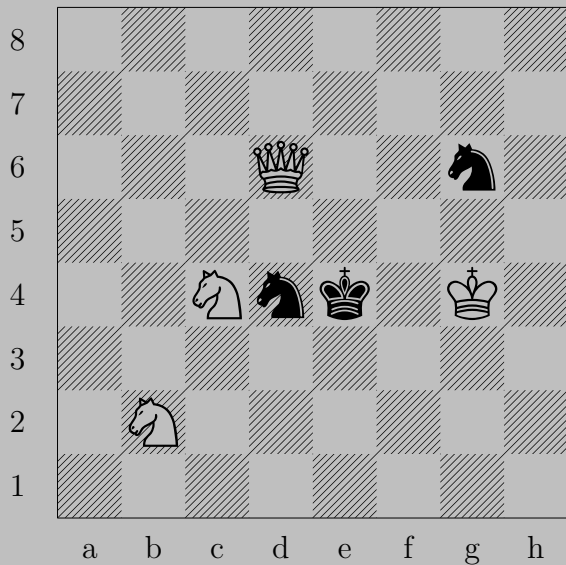


♙d2

If ♘e4, ♘d7.

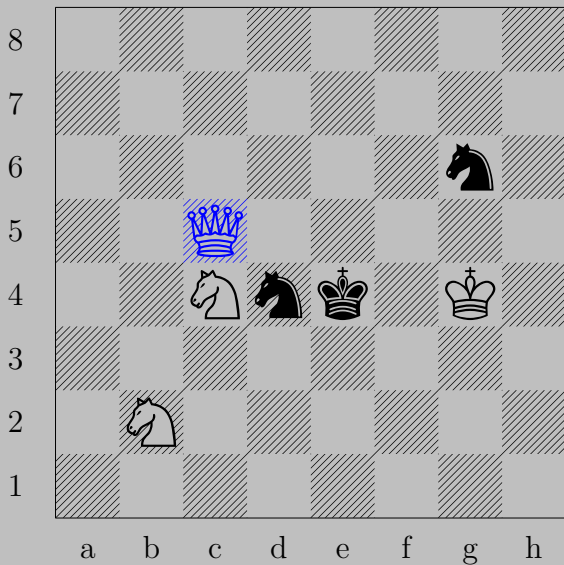
Otherwise, ♙e3.

2158



F. Lazard, 1935

2158



♔c5

If ♘(g6) anywhere, ♔e5. If ♘b3 or ♘f3, ♘d6.

Otherwise ♘d2.

2159



F. Lazard, 1935

2159

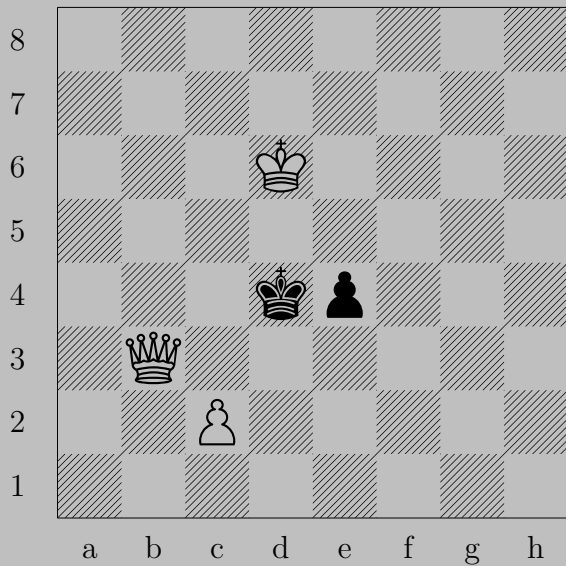


♔d4

If ♕xd4, ♖e4. If ♖e4, ♔c5.

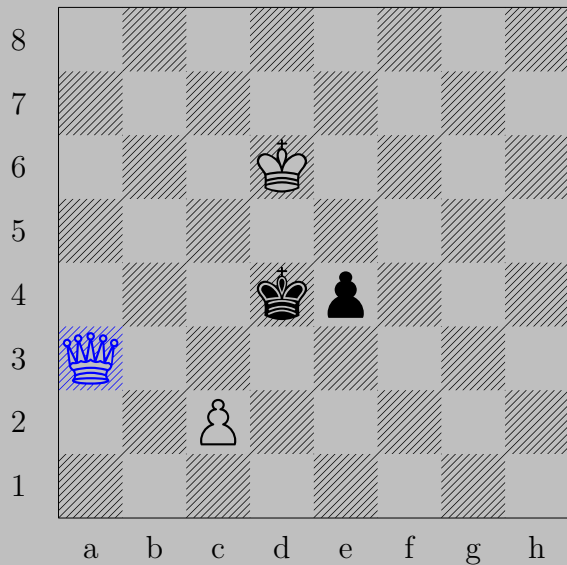


2160



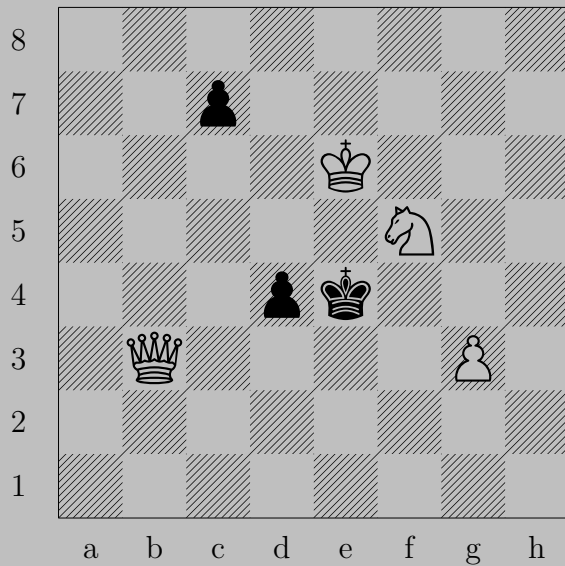
F. Lazard, 1926

2160

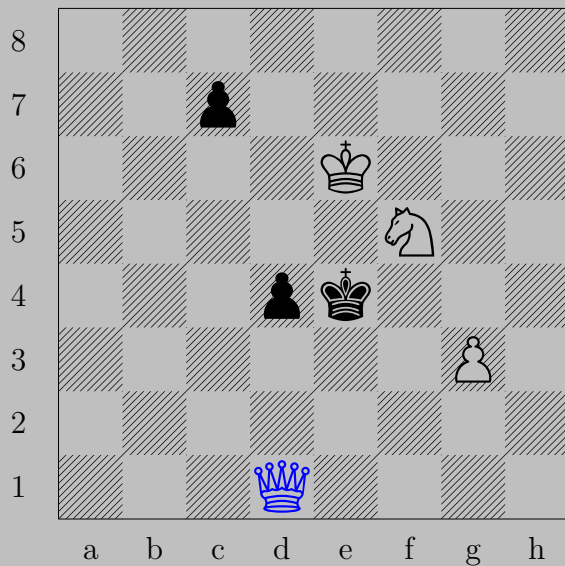


♙a3






If ♔c4, ♚c5. If ♖e3, ♙d3.

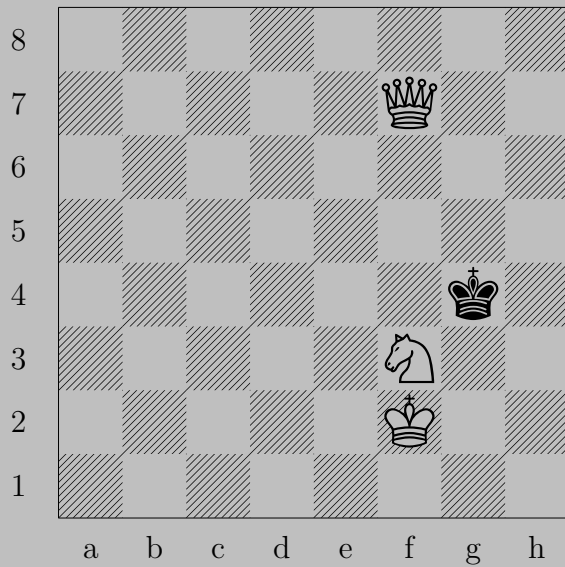


2161

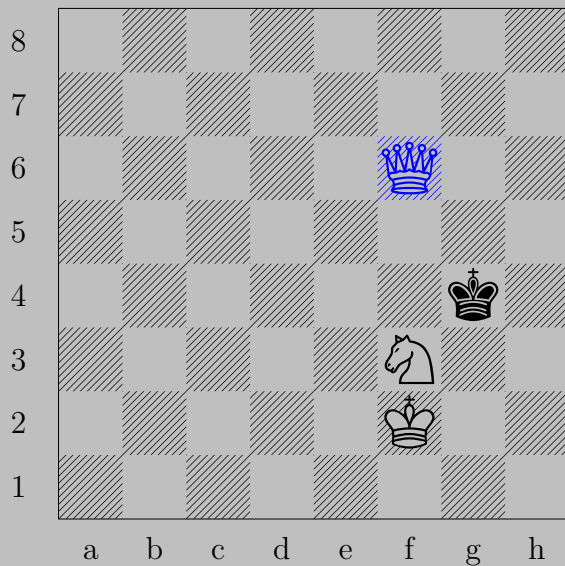


d1

If c6 or c5, e2. If d3, g4.



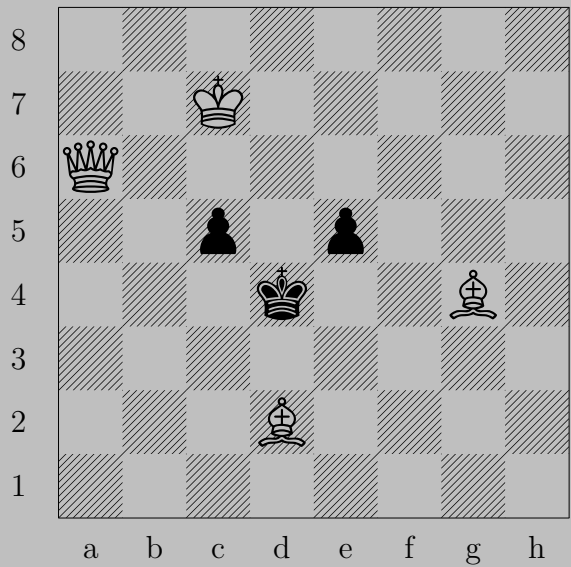
2162



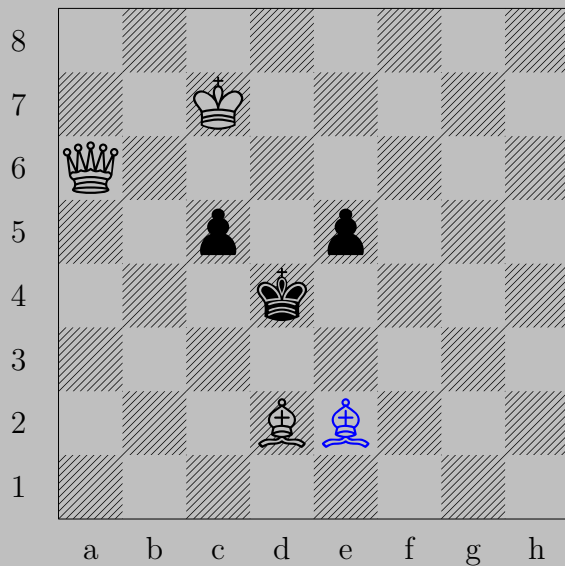
♙f6

If ♔h3, ♚h4. If ♔h5, ♚g5.

2163



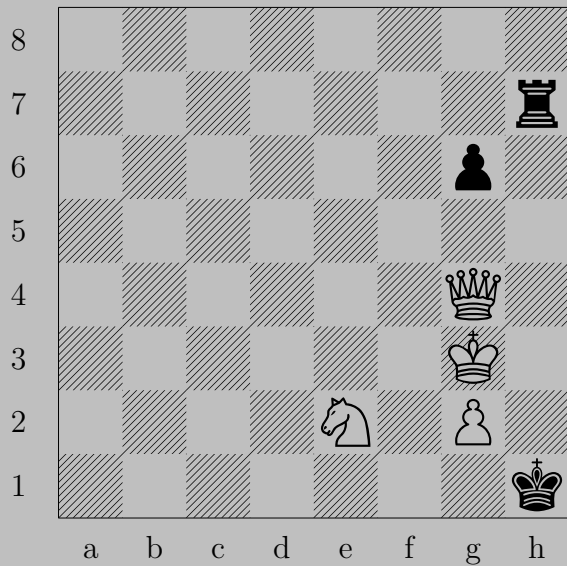
E. Lazdinsh, 1952

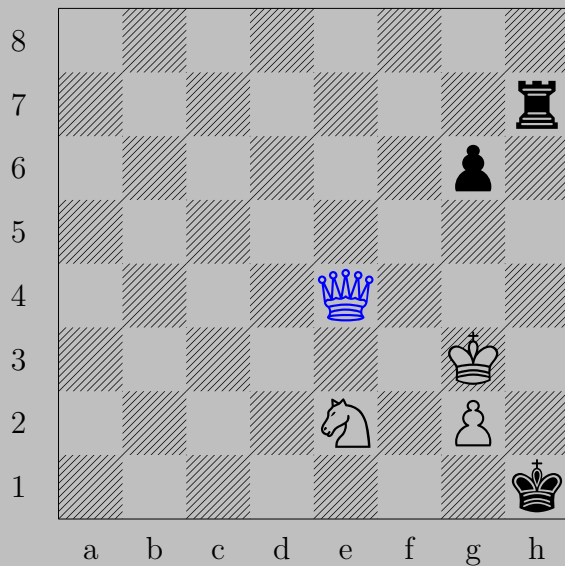


♔e2

If ♕e4, ♔d6. If ♔d5 or ♔e4, ♔c4. If ♕c4, ♔xc4.



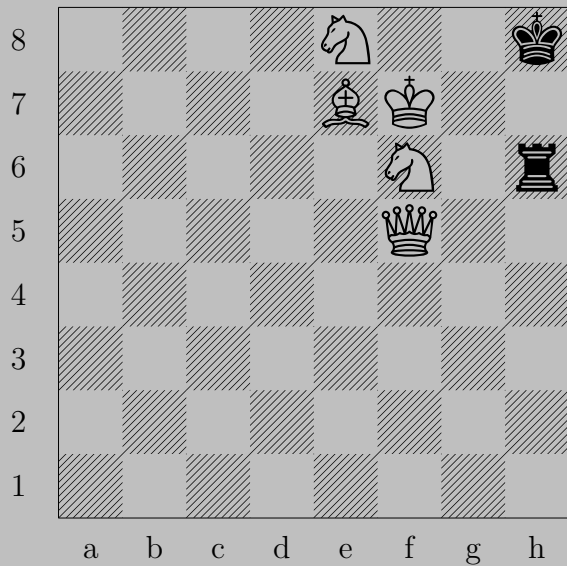




♙e4

If ♖h3+, ♘×h3. If ♖a7-g7, ♙h4.

Otherwise, ♙b1.



2165

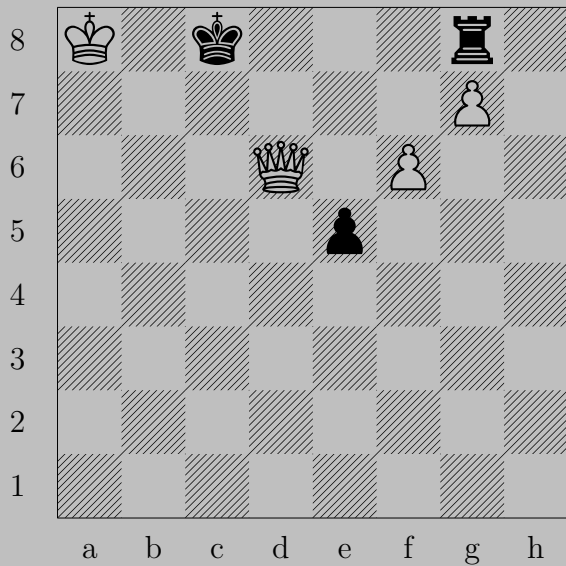


♔c8

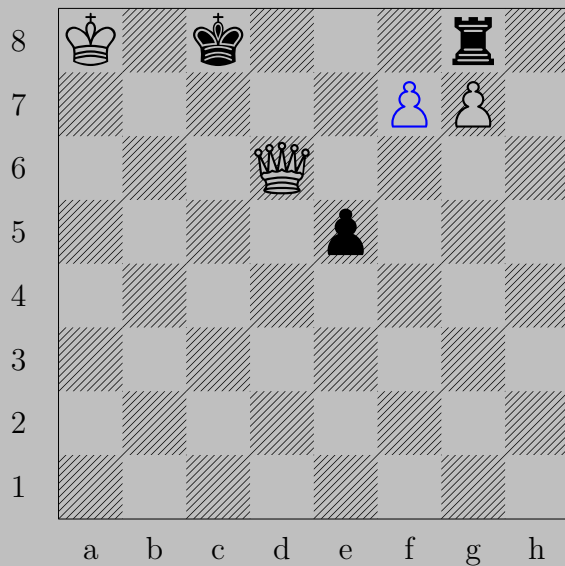
If ♖×f6, ♞×f6.

Otherwise, ♞g7.

2166



A. Lebedev, 1933

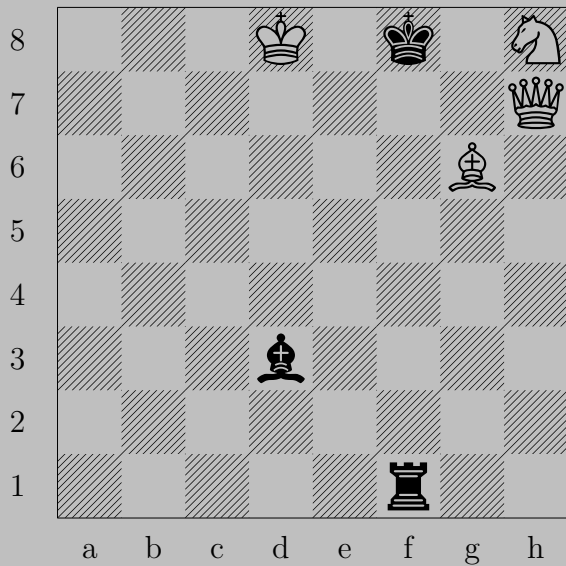


$\triangleleft f7$

If  $\blacktriangleleft \times g7$ ,  $\triangleleft f8$  ( $\text{♔}$ ). If  $\blacktriangleleft d8$ ,  $\text{♔} c6$ .

Otherwise,  $\triangleleft \times \blacktriangleleft$  ( $\text{♔}$ ).

2167



A. Lebedev, 1929

2167

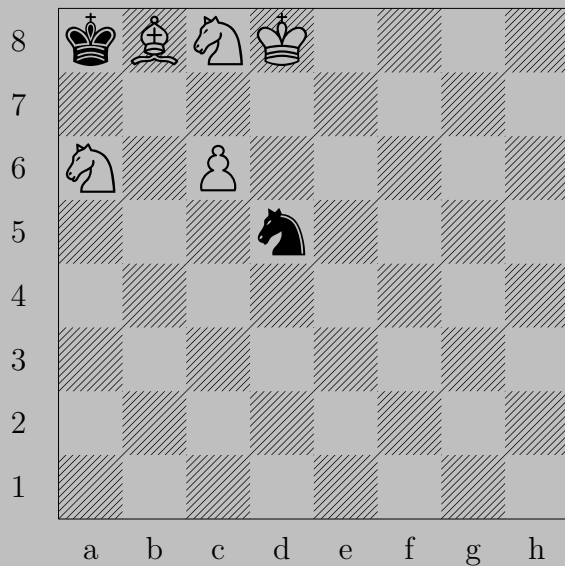


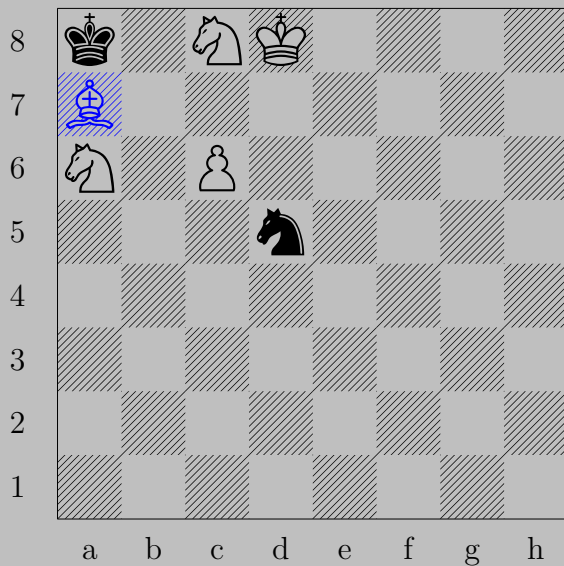
♝f5

If ♖xf5 or ♝c4, ♞g6.

Otherwise, ♚f7.

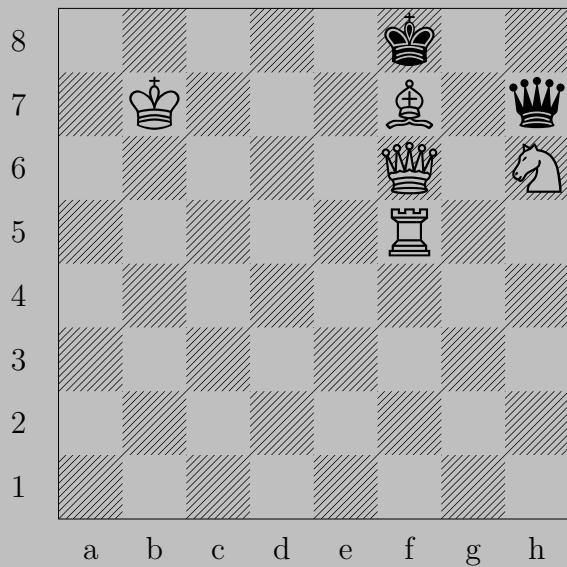


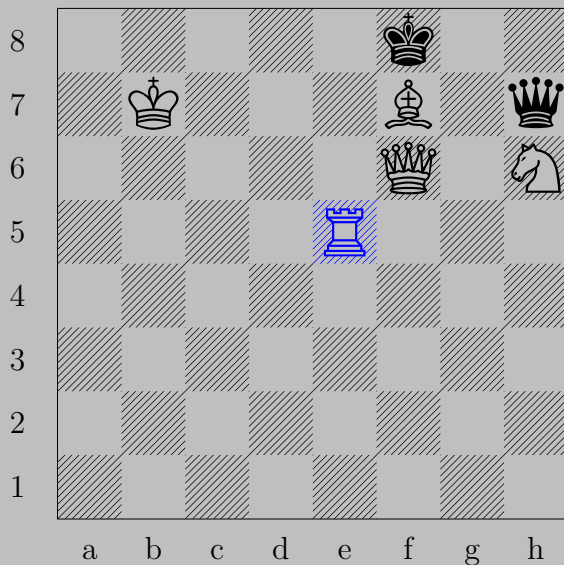




♔a7

If ♖c7, ♖xc7. Otherwise, ♖c7.



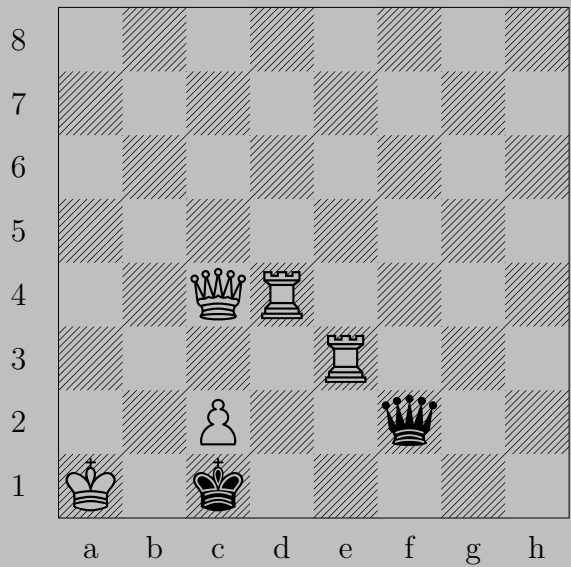


$\text{R}e5$

If  $\text{Q}b1+$ ,  $\text{K}b3$ . If  $\text{Q}e4+$ ,  $\text{K}d5$ . If  $\text{Q}xf7+$ ,  $\text{Q}xf7$ . If  $\text{Q}xh6$ ,  $\text{Q}xh6$ .

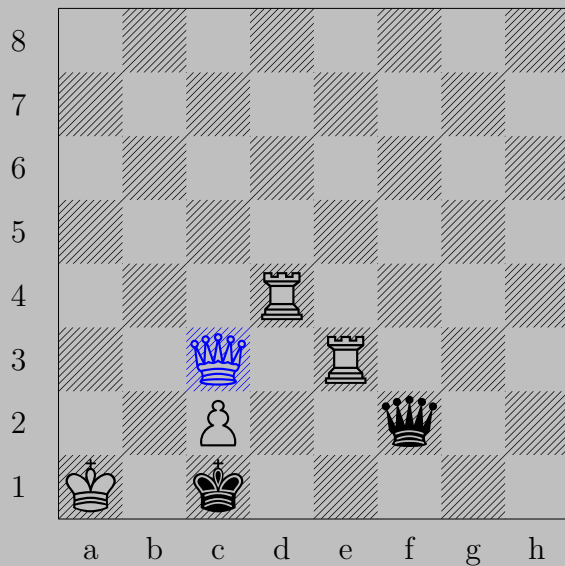
If  $\text{Q}g6$ ,  $\text{K}xg6$ . If  $\text{Q}g7$ ,  $\text{Q}d8$ . If  $\text{Q}g8$ ,  $\text{K}xg8$ . If  $\text{Q}h8$ ,  $\text{Q}xh8$ . Other,  $\text{Q}h8$ .

2170



A. Lebedev, 1929

2170



♙c3

If ♙xc2, ♖e1. If ♙d2, ♙xd2.

Otherwise, ♙b2.

2171



A. Lebedev, 1929

2171



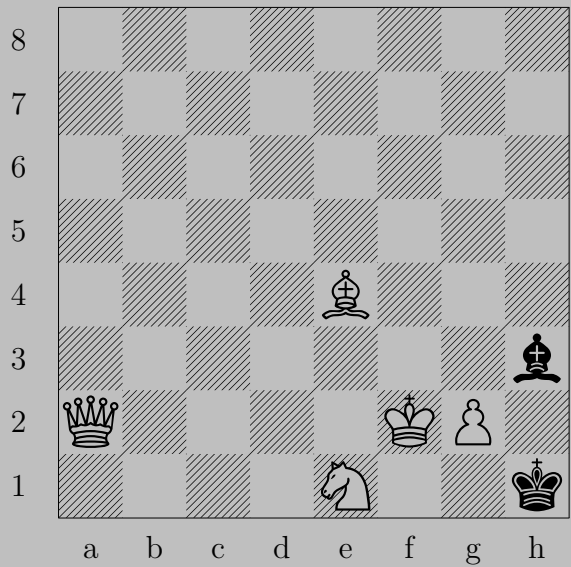
$\text{♞e4}$

If  $\text{♜d6}$ ,  $\text{♞d5}$ . If  $\text{♜e7}$ ,  $\text{♞f6}$ .

Otherwise,  $\text{♞f5}$ .



2172



A. Lebedev, 1935

2172

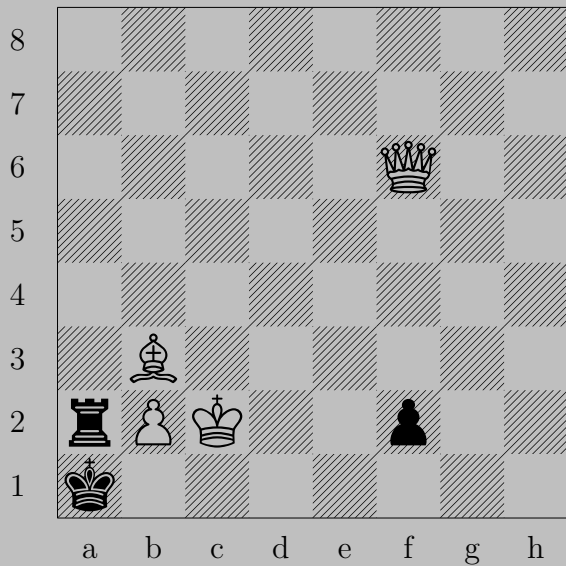


♔a1

If ♖×g2, ♔h8.

Otherwise, ♞f3.

2173



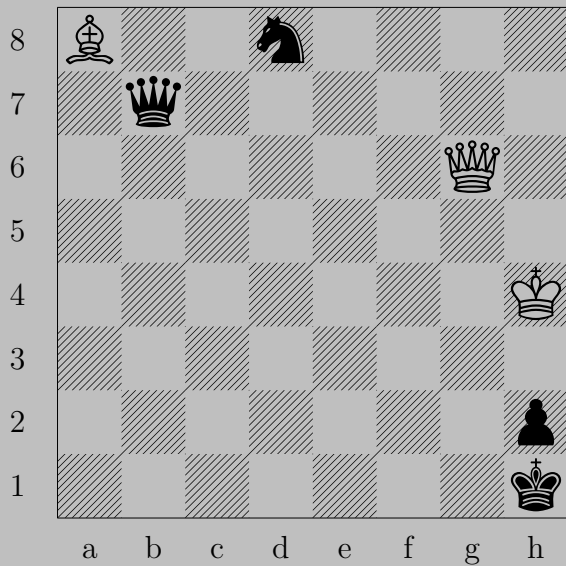
A. Lebedev, 1933



♙d5

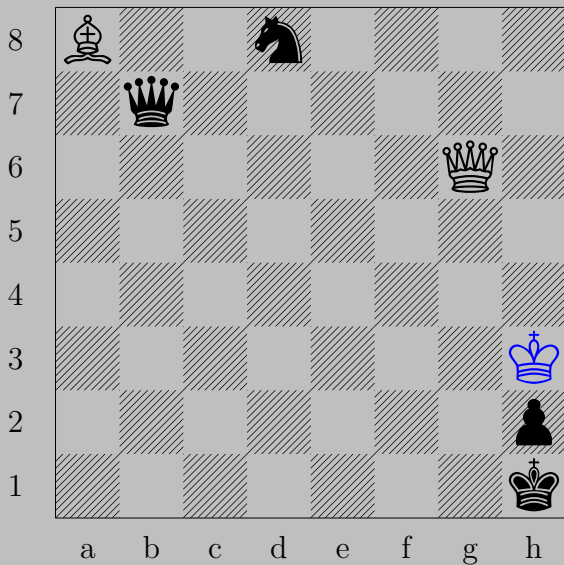
If ♖×b2+, ♙×b2. If ♗f1, ♙×f1. If ♖a3, ♗×a3. If ♖a6, ♙×a6.  
Otherwise, ♗b4.

2174



A. Lebedev, 1934

2174

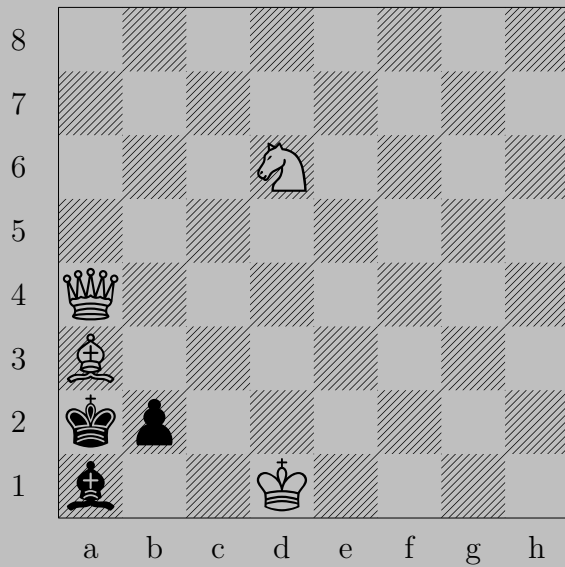


♔h3

If ♚×a8 or ♚c6, ♚b1. If ♞c6, ♚g2.

Otherwise, ♚×♚.

2175



A. Lebedev, 1934

2175

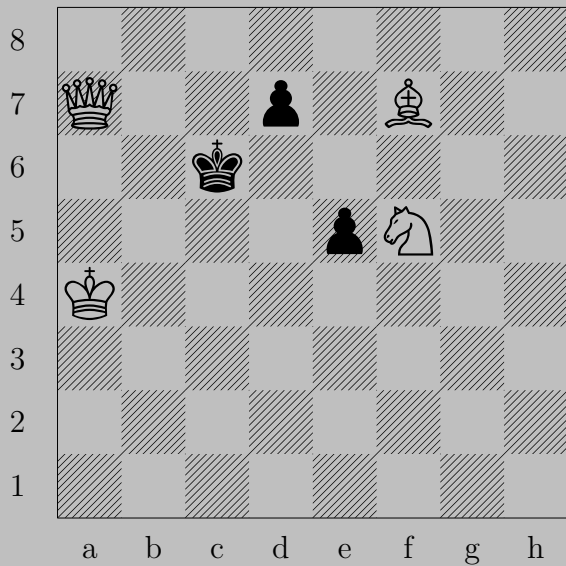


$\text{Nb5}$

If  $\text{Bb1}(\text{Q})$ ,  $\text{Sc1}$ . If  $\text{Bb1}(\text{N})$ ,  $\text{Qc2}$ . If  $\text{Kb1}$ ,  $\text{Nc3}$ .

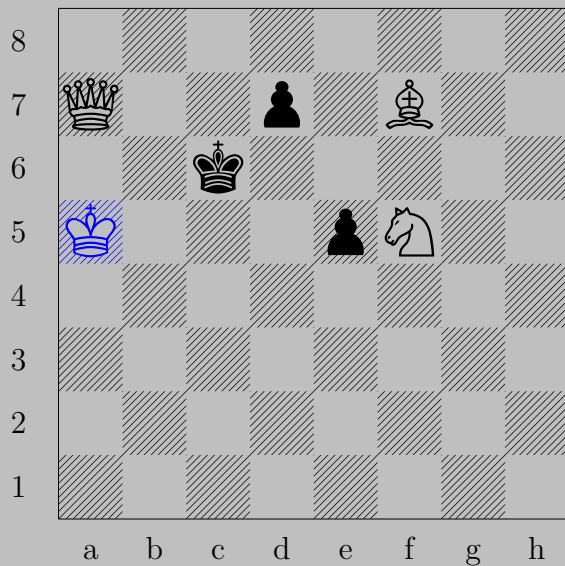


2176



A. Lebedev, 1934

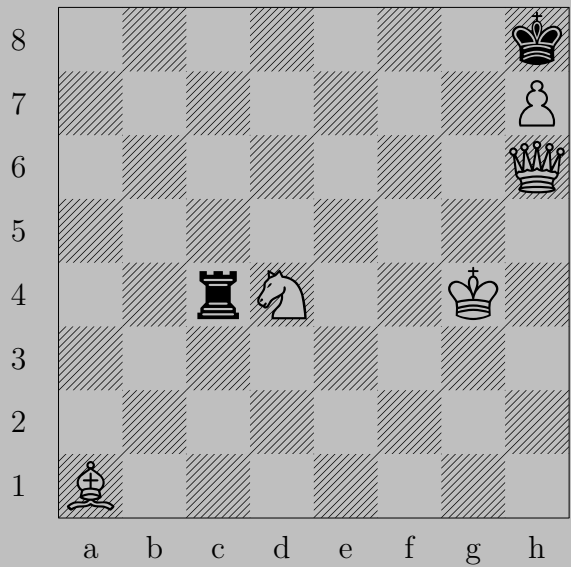
2176



♔a5

If ♖d6, ♜e7. If ♖d5, ♙e8. If ♖e4, ♚b6.

2177



A. Lebedev, 1934

2177



♙g6

If ♖xd4+, ♗xd4. If ♖c8, ♘c6.

Otherwise, ♙g8.

2178



A. Lebedev, 1935

2178

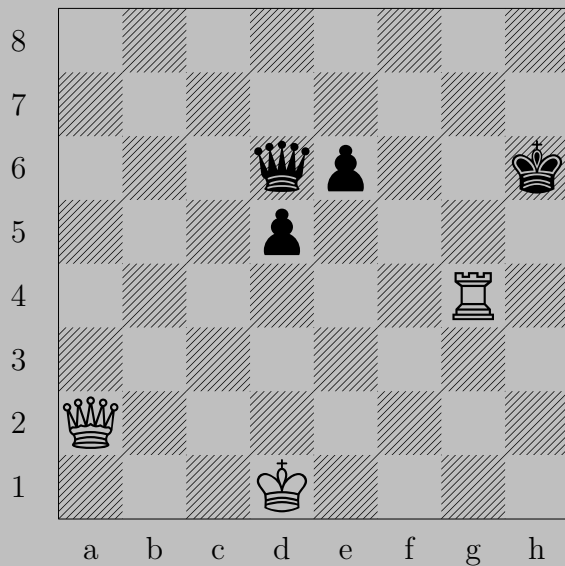


♔f1

If ♘f4, ♘x3. If ♘e1 or ♘h4, ♘xh3.

Otherwise, ♔g2.

2179



A. and V. Lebedev, 1933

2179

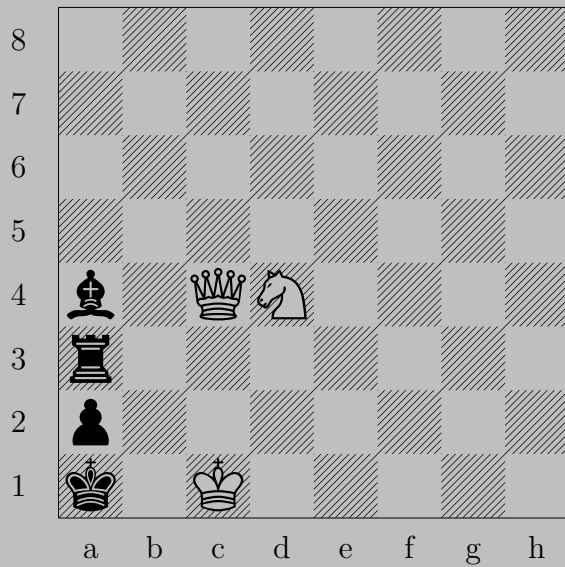


♔c2

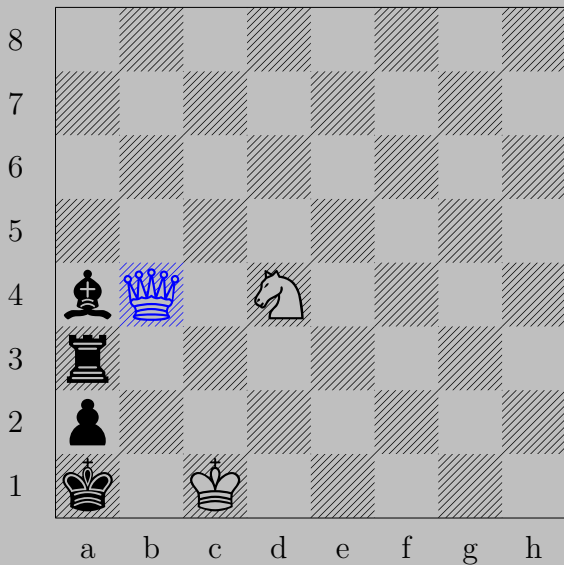
If ♚e5, ♔h2.

Otherwise, ♔g6.





2180

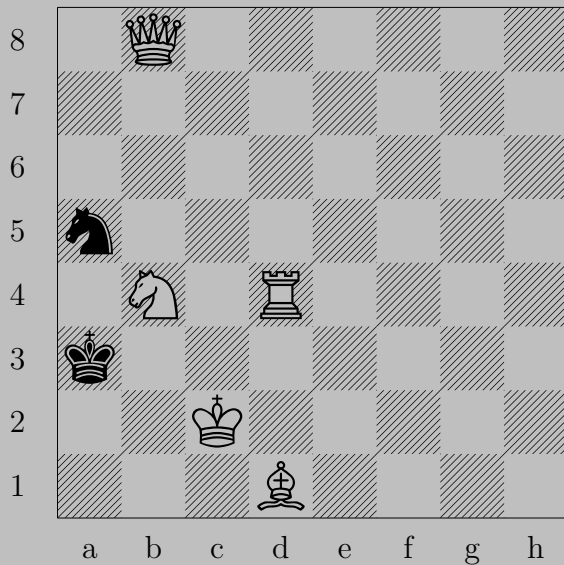


♙b4

If ♘b3, ♙c3. If ♖b3, ♘c2. If ♖c3+, ♙xc3.

Otherwise, ♙b2.

2181



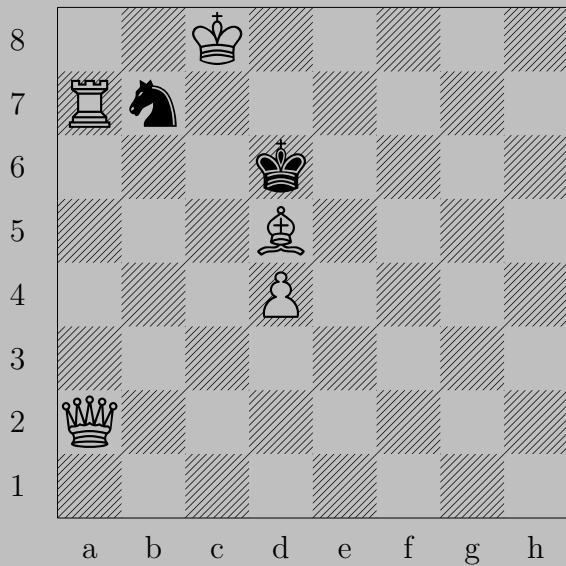
A. and V. Lebedev, 1936



♔b1

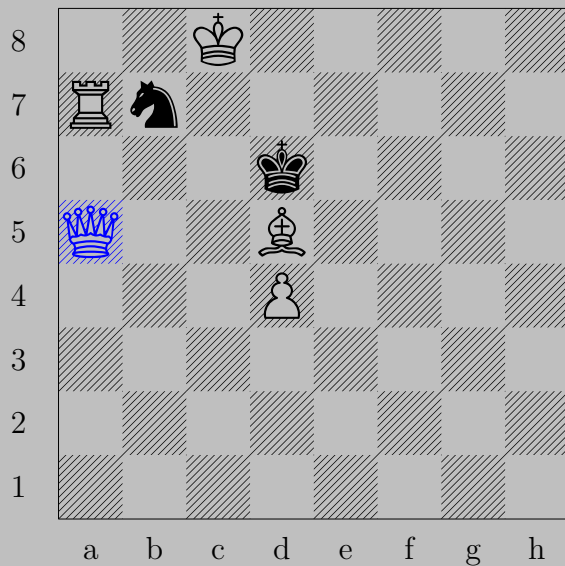
If ♘b3, ♘c2. If ♘c4, ♖d3. If ♘b7 or ♘c6, ♙g3.

2182



V. Lebedev, 1935

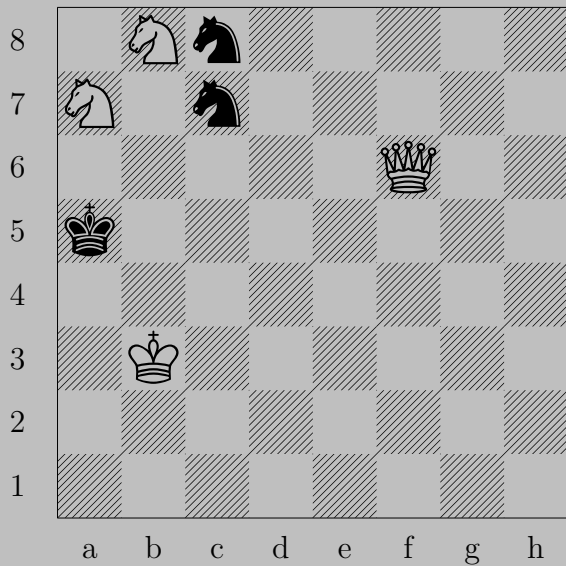
2182



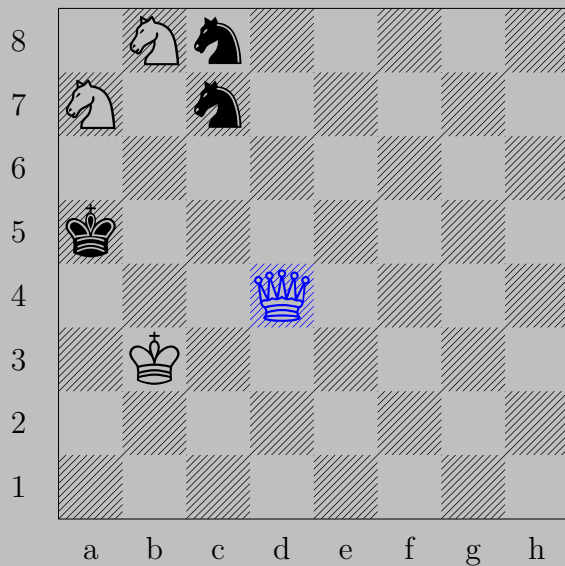
♚a5

If ♞xa5 or ♞d8, ♖d7. If ♔e7, ♚d8. If ♞c5, ♚xc5.

2183



V. Lebedev, 1934



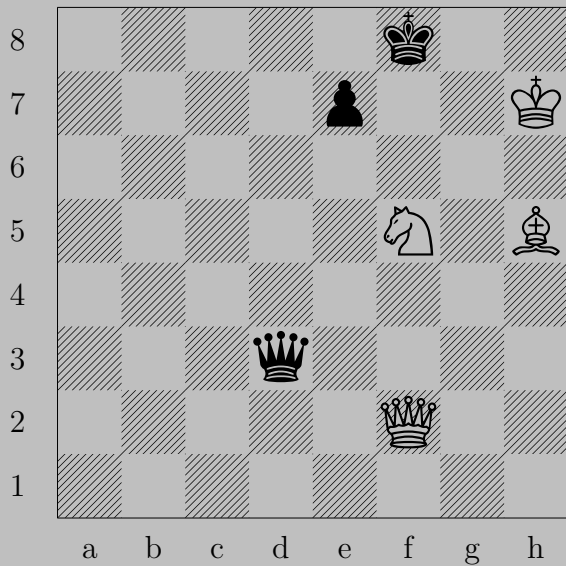
♔d4

If ♘a6, ♘(b8) c6. If ♘d5, ♔c5.

Otherwise, ♔b4.



2184



V. Lebedev, 1931

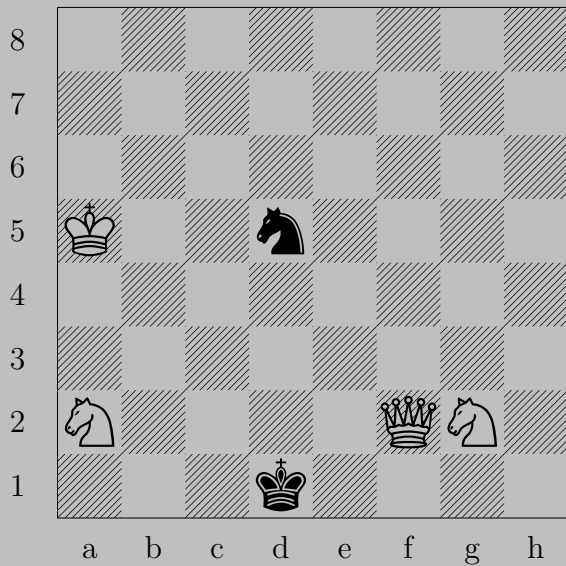


♔f4

If ♔×f5+, ♔×f5. If ♔a6, ♘d6. If ♔c3, ♘d4. If ♔d2, ♘e3.

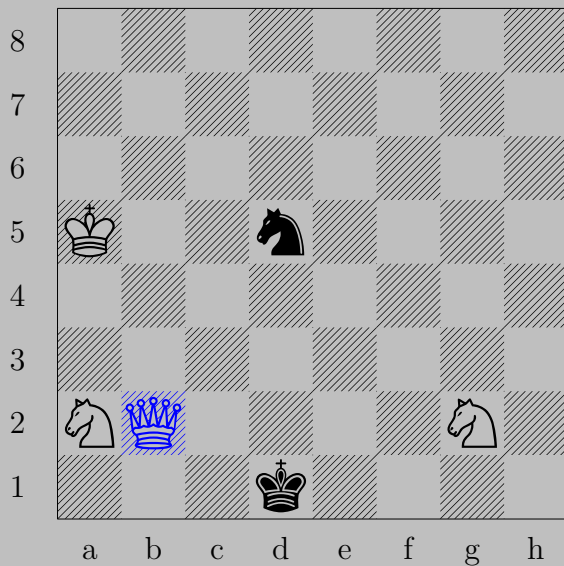
If ♔d4 or ♔d6 or ♔e3 or ♔g3, ♘×♔. Otherwise, ♔b6.

2185



V. Lebedev, 1934

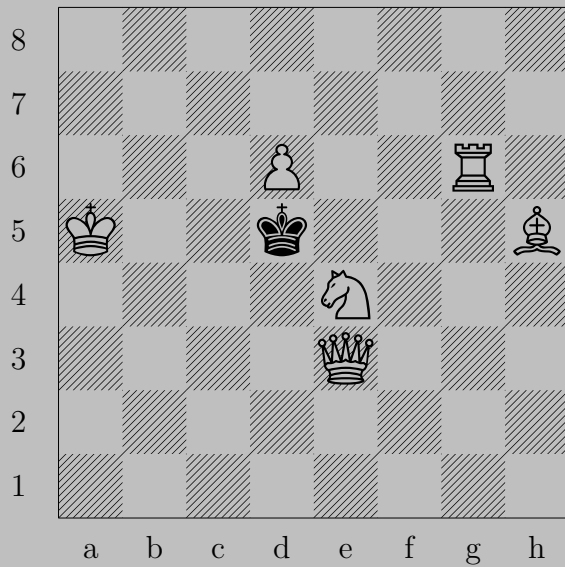
2185



♔b2

If ♖c3, ♖xc3.

Otherwise, ♖c3.

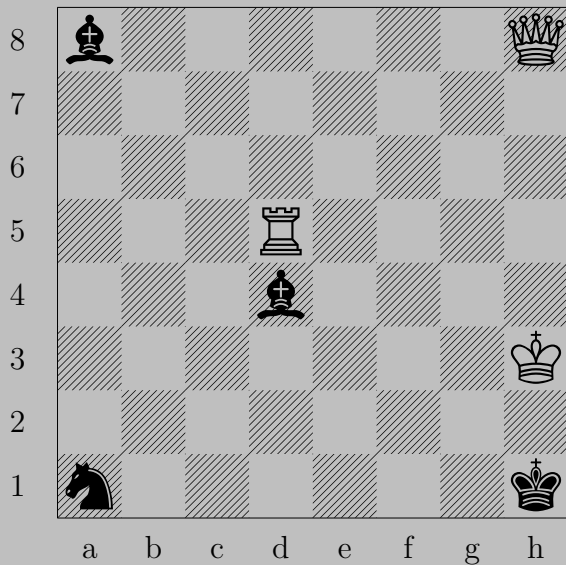




♙f3

if ♔c4, ♞d2. If ♔c6, ♞c5. If ♔e5, ♞g3.

2187



H. Lehner, 1874

2187



♙e5

If ♗×e5, ♖d1. If ♔g1, ♙e1. If ♗g1, ♙e4.

Otherwise, ♙h2.

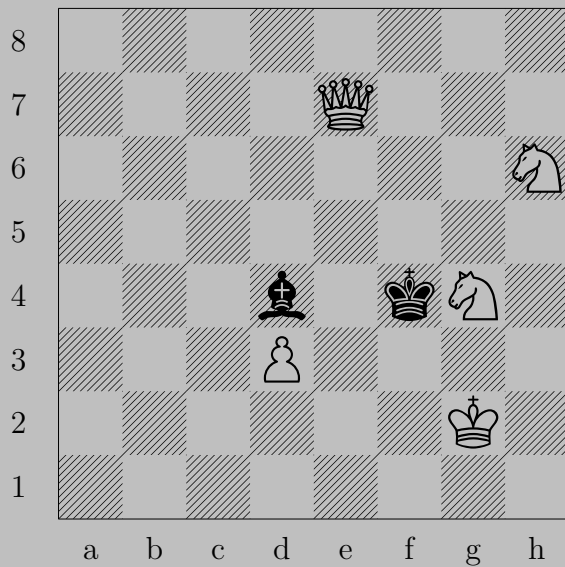


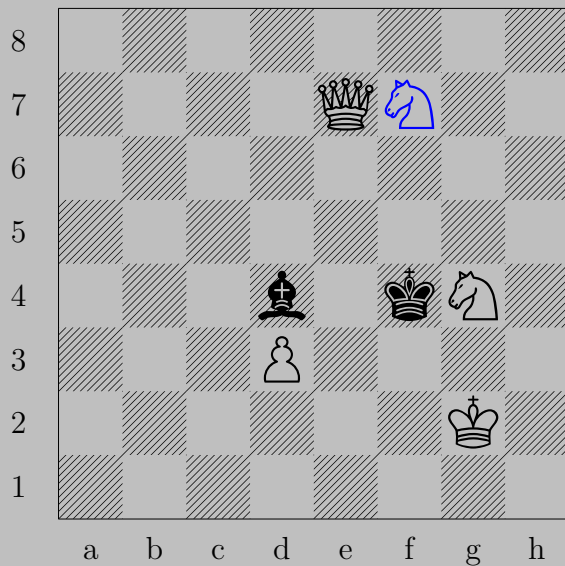




♙g8

If ♔f6, ♙g5. If ♔e4, ♙d5. If ♖e6, ♙×e6. If ♖e5 or ♔e5, ♙e6.

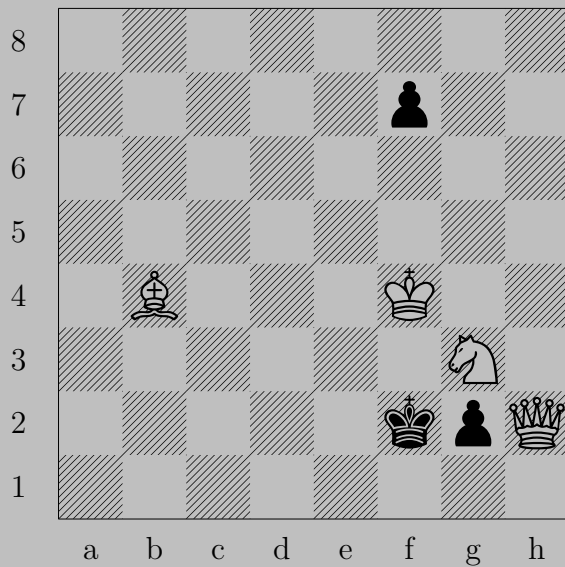


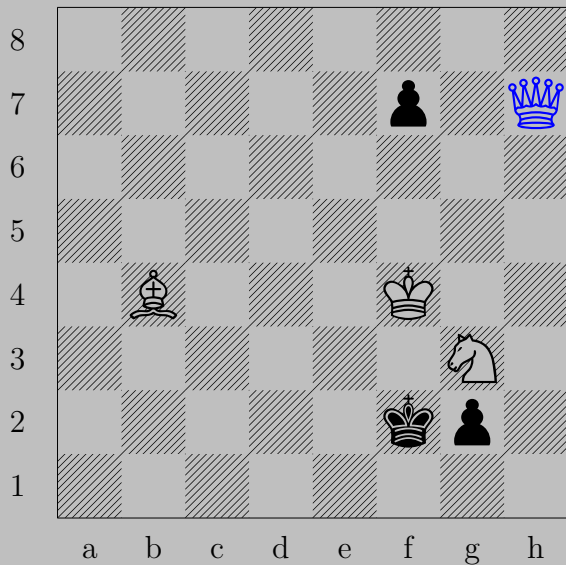


$\text{♞f7}$

If  $\text{♔}\times\text{g4}$  or  $\text{♕e5}$ ,  $\text{♞g5}$ .

Otherwise,  $\text{♞e4}$ .

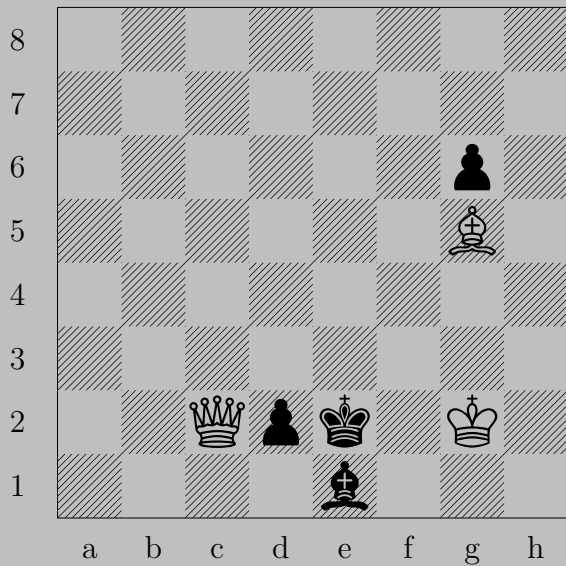




♔h7

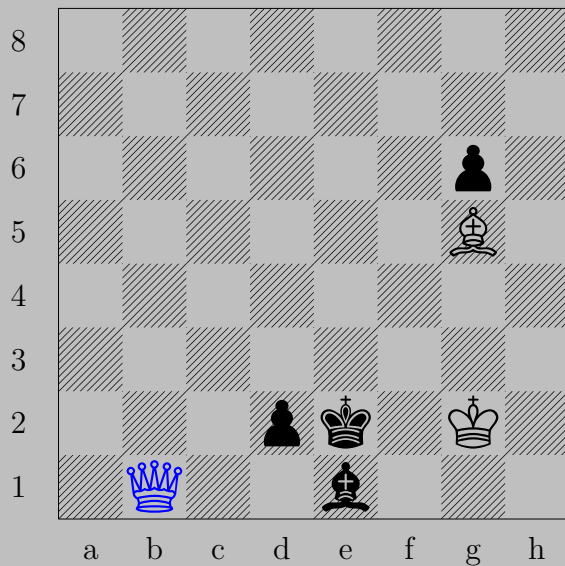
If ♖g1(♔), ♕c2. If ♖g1(♞), ♕h2. If ♔g1, ♙c5. If ♖f6 or ♖f5, ♕a7.

2191



W. E. Lester, 1924

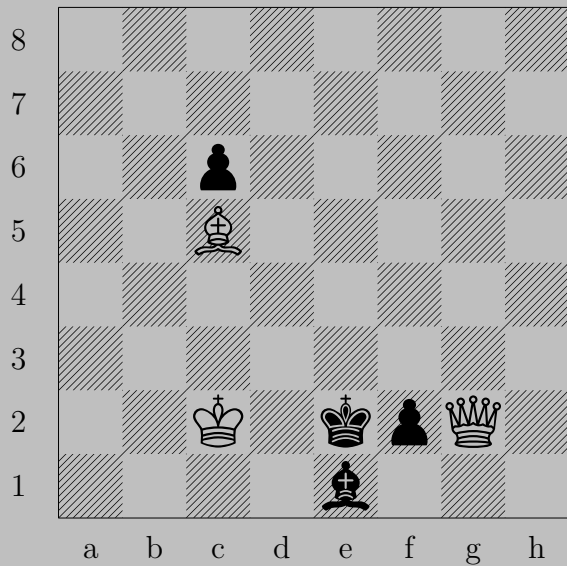
2191

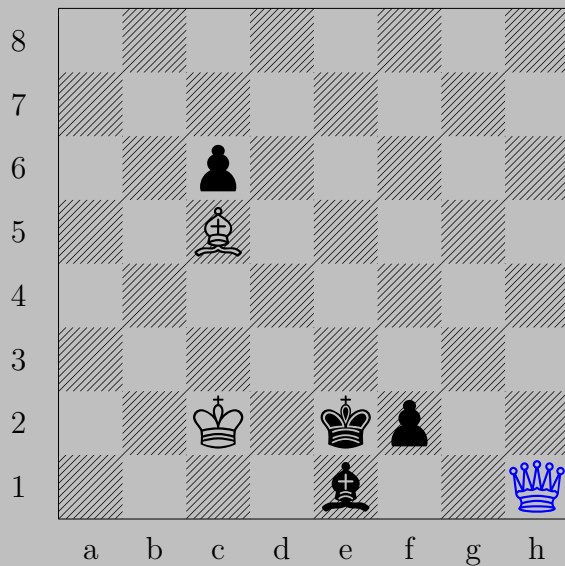


♔b1

If ♖d1(♔), ♔e4. If ♖d1(♘), ♔b5. If ♘f2-h4, ♔f1.



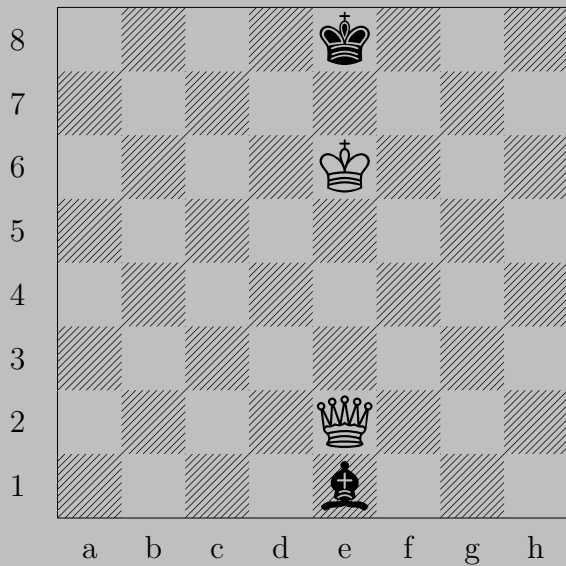




♔h1

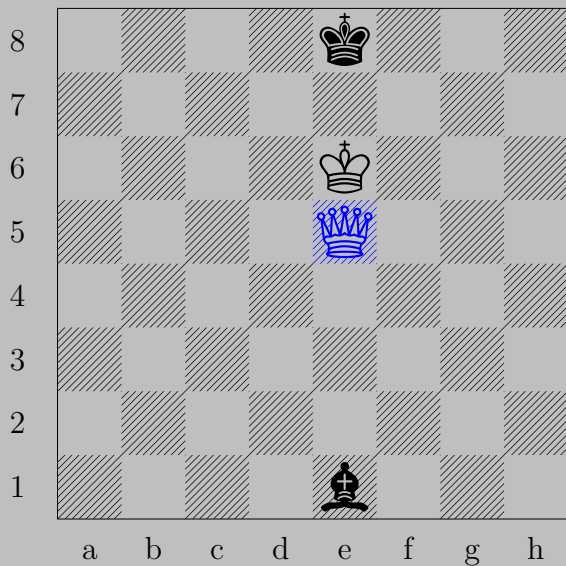
If  $\Delta f1(\text{♔})$ ,  $\text{♔}e4$ . If  $\Delta f1(\text{♞})$ ,  $\text{♔}h5$ . If  $\text{♞}d2-a5$ ,  $\text{♔}d1$ .

2193



R. L'hermet, 1923

2193

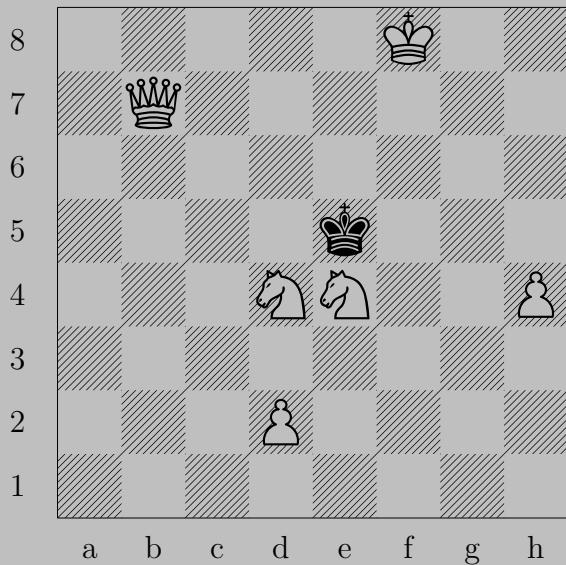


♔e5

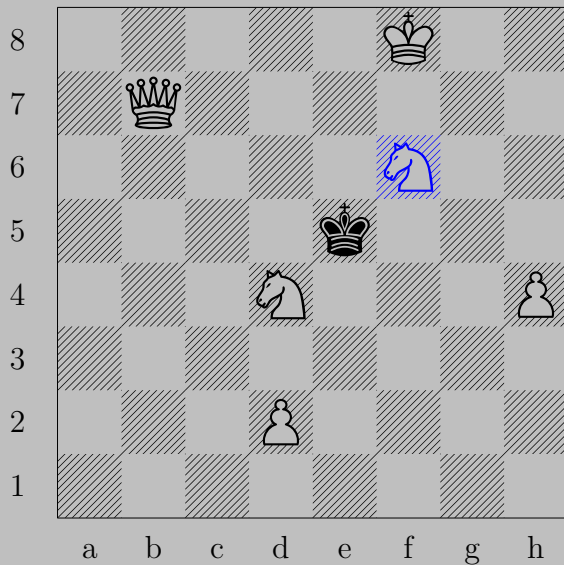
If ♘c3 or ♘b4 or ♖d8, ♚b8.

Otherwise, ♚h8.

2194



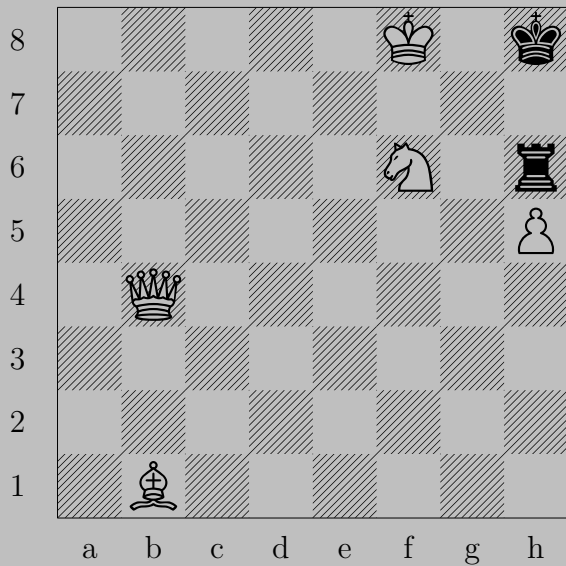
S. Liberali, 1881



$\text{Nf6}$

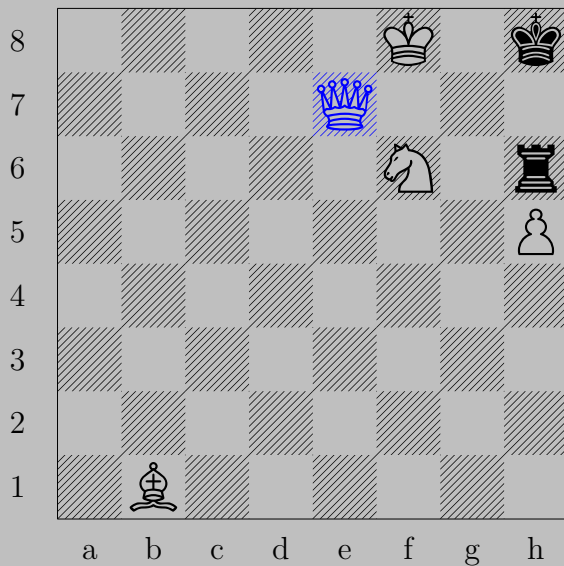
If  $\text{Kxd4}$ ,  $\text{Qd5}$ . If  $\text{Kxf6}$ ,  $\text{Qg7}$ . If  $\text{Kd6}$ ,  $\text{Qe7}$ . If  $\text{Kf4}$ ,  $\text{Qc7}$ .

2195



V. Lider, 1970

2195

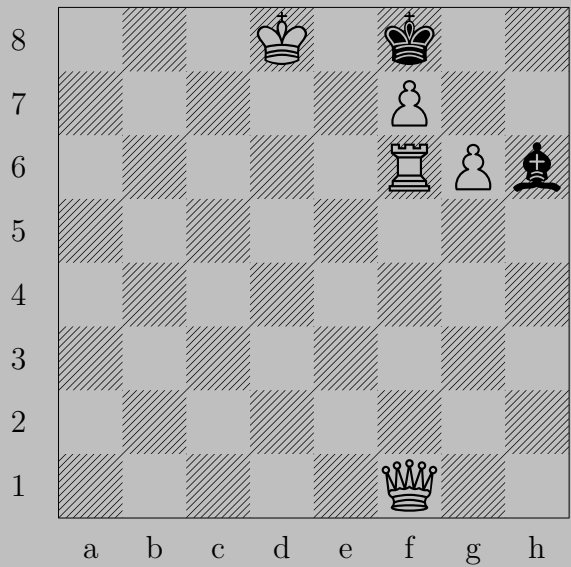


♛e7

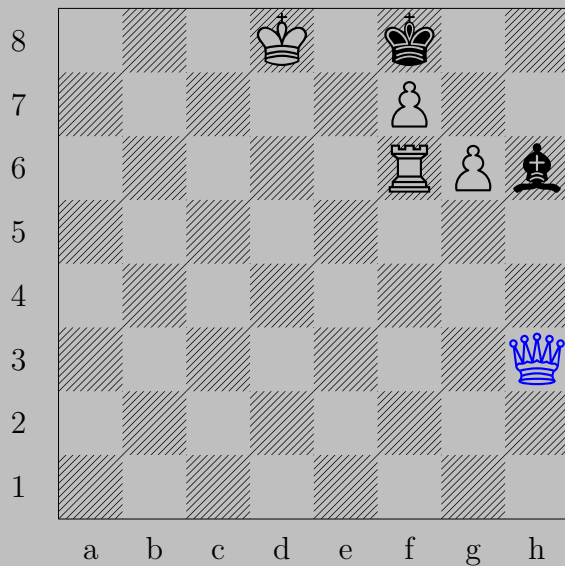
If ♖xf6+, ♛xf6. If ♖xh5, ♛g7. If ♖g6, ♖h7. If ♖h7, ♛xh7.



2196



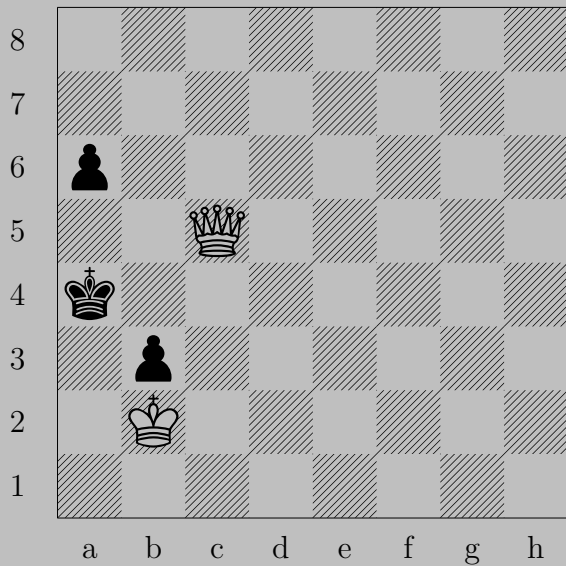
V. Lider, 1971



♔h3

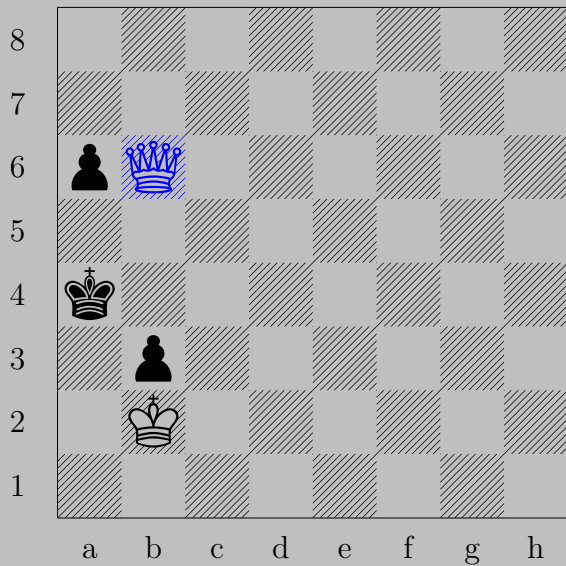
If ♘g7, ♚a3. If ♔g7, ♖g8(♚). If ♘c1-g5, ♚h8.

2197



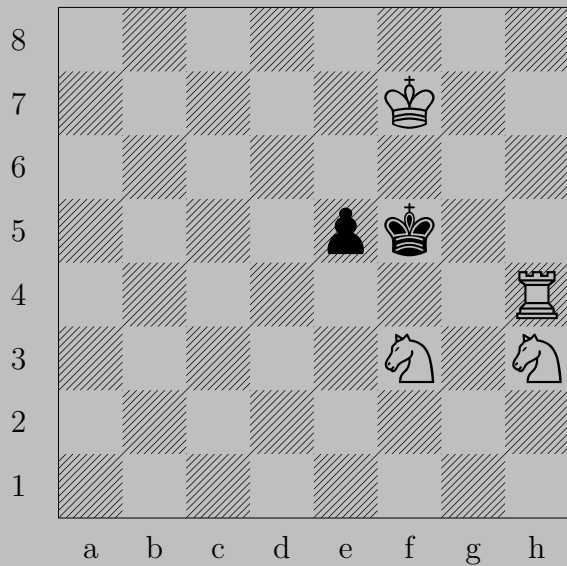
R. T. Lewis, 1985

2197

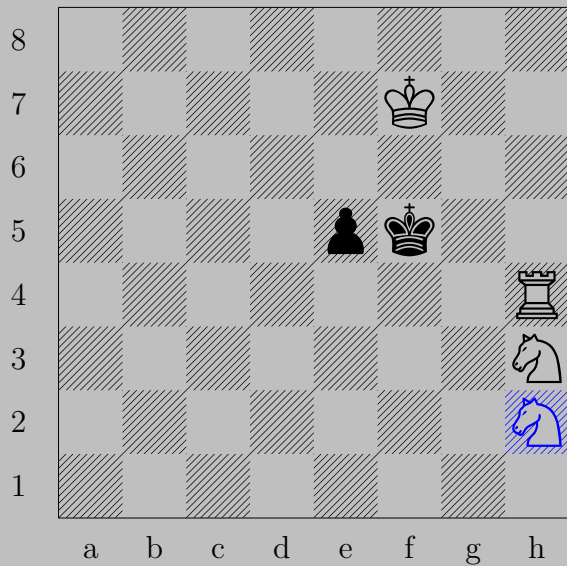


♙b6, ♖a5

♙x b3

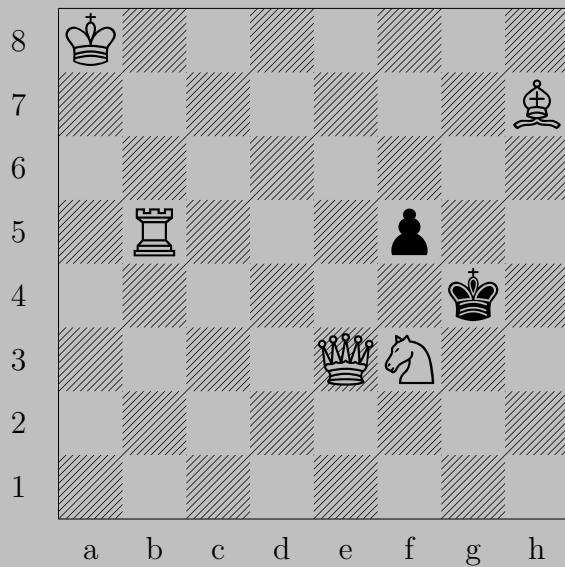


2198

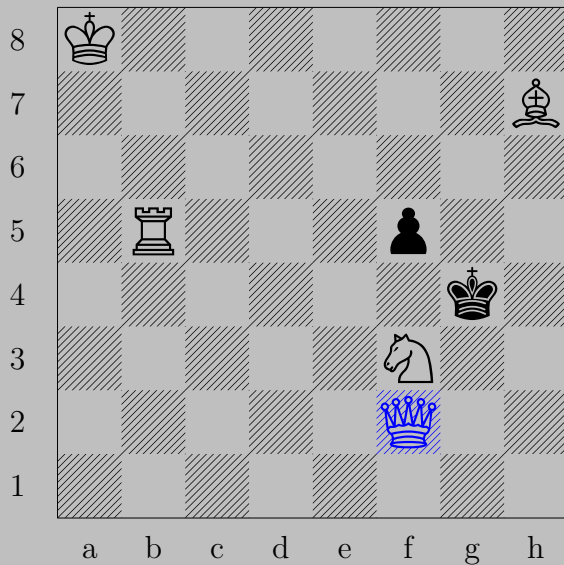


$\text{♞h2, ♔e4}$   
 $\text{♖h5}$

2199



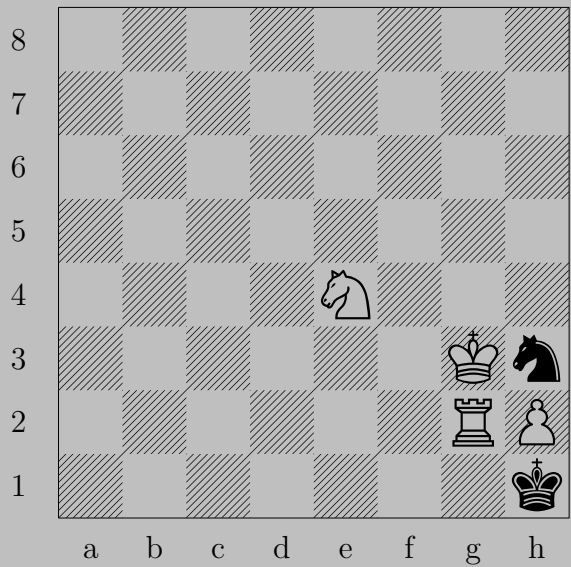
R. T. Lewis, 1985



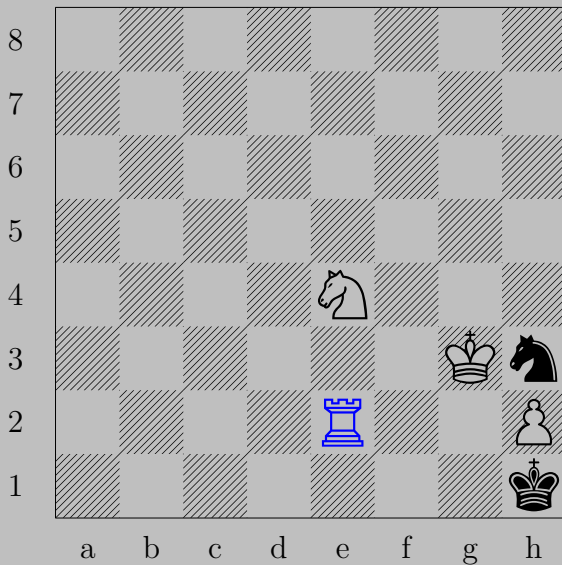
♙f2

If ♘f4, ♙g2. If ♔h5, ♙h4. If ♔f4, ♖b4. If ♔h3, ♙xf5.





2200



$\text{R}e2$

If  $\text{N}g1, \text{N}f2$ .

Otherwise,  $\text{R}e1$ .