

# Chess Puzzles

1001-1100

Mate in Two  
White to Move

László Polgár

## Links

|                      |                      |                      |                      |                      |                      |                      |                      |                      |                      |
|----------------------|----------------------|----------------------|----------------------|----------------------|----------------------|----------------------|----------------------|----------------------|----------------------|
| <a href="#">1001</a> | <a href="#">1002</a> | <a href="#">1003</a> | <a href="#">1004</a> | <a href="#">1005</a> | <a href="#">1006</a> | <a href="#">1007</a> | <a href="#">1008</a> | <a href="#">1009</a> | <a href="#">1010</a> |
| <a href="#">1011</a> | <a href="#">1012</a> | <a href="#">1013</a> | <a href="#">1014</a> | <a href="#">1015</a> | <a href="#">1016</a> | <a href="#">1017</a> | <a href="#">1018</a> | <a href="#">1019</a> | <a href="#">1020</a> |
| <a href="#">1021</a> | <a href="#">1022</a> | <a href="#">1023</a> | <a href="#">1024</a> | <a href="#">1025</a> | <a href="#">1026</a> | <a href="#">1027</a> | <a href="#">1028</a> | <a href="#">1029</a> | <a href="#">1030</a> |
| <a href="#">1031</a> | <a href="#">1032</a> | <a href="#">1033</a> | <a href="#">1034</a> | <a href="#">1035</a> | <a href="#">1036</a> | <a href="#">1037</a> | <a href="#">1038</a> | <a href="#">1039</a> | <a href="#">1040</a> |
| <a href="#">1041</a> | <a href="#">1042</a> | <a href="#">1043</a> | <a href="#">1044</a> | <a href="#">1045</a> | <a href="#">1046</a> | <a href="#">1047</a> | <a href="#">1048</a> | <a href="#">1049</a> | <a href="#">1050</a> |
| <a href="#">1051</a> | <a href="#">1052</a> | <a href="#">1053</a> | <a href="#">1054</a> | <a href="#">1055</a> | <a href="#">1056</a> | <a href="#">1057</a> | <a href="#">1058</a> | <a href="#">1059</a> | <a href="#">1060</a> |
| <a href="#">1061</a> | <a href="#">1062</a> | <a href="#">1063</a> | <a href="#">1064</a> | <a href="#">1065</a> | <a href="#">1066</a> | <a href="#">1067</a> | <a href="#">1068</a> | <a href="#">1069</a> | <a href="#">1070</a> |
| <a href="#">1071</a> | <a href="#">1072</a> | <a href="#">1073</a> | <a href="#">1074</a> | <a href="#">1075</a> | <a href="#">1076</a> | <a href="#">1077</a> | <a href="#">1078</a> | <a href="#">1079</a> | <a href="#">1080</a> |
| <a href="#">1081</a> | <a href="#">1082</a> | <a href="#">1083</a> | <a href="#">1084</a> | <a href="#">1085</a> | <a href="#">1086</a> | <a href="#">1087</a> | <a href="#">1088</a> | <a href="#">1089</a> | <a href="#">1090</a> |
| <a href="#">1091</a> | <a href="#">1092</a> | <a href="#">1093</a> | <a href="#">1094</a> | <a href="#">1095</a> | <a href="#">1096</a> | <a href="#">1097</a> | <a href="#">1098</a> | <a href="#">1099</a> | <a href="#">1100</a> |

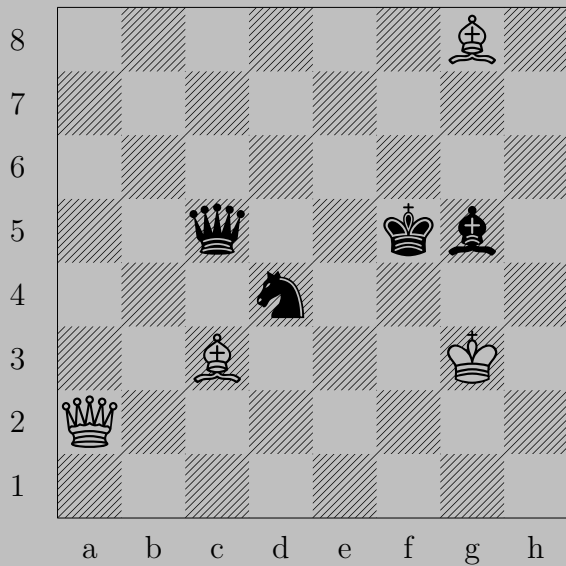


1001



♞e5+, ♞xe5 or ♔g6 or ♔f5  
♔g5

1002

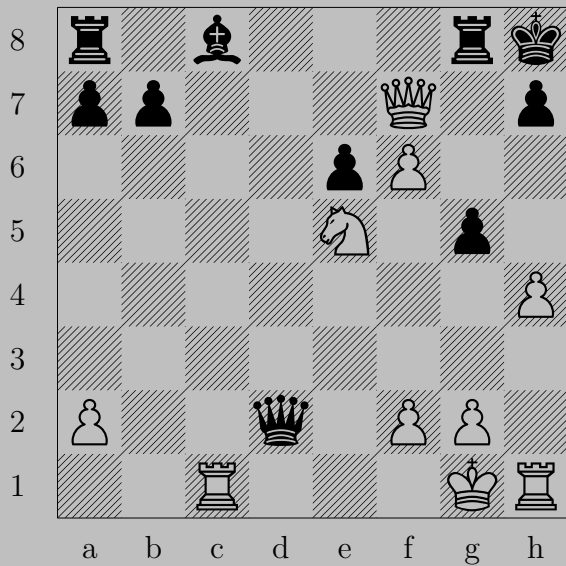


1002

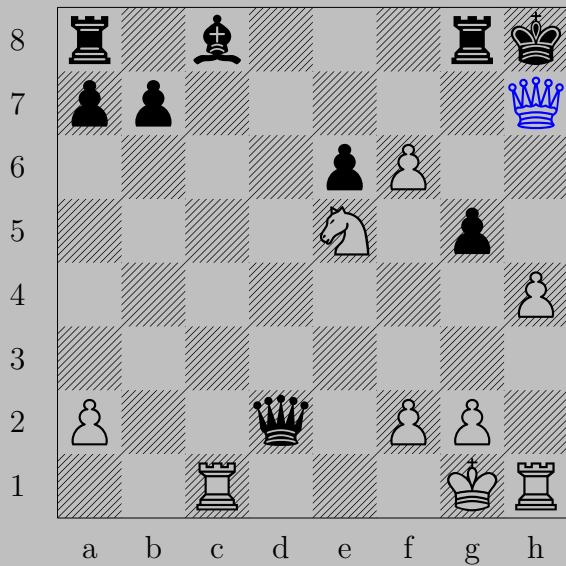


♚e6+, ♞x6  
♙h7

1003

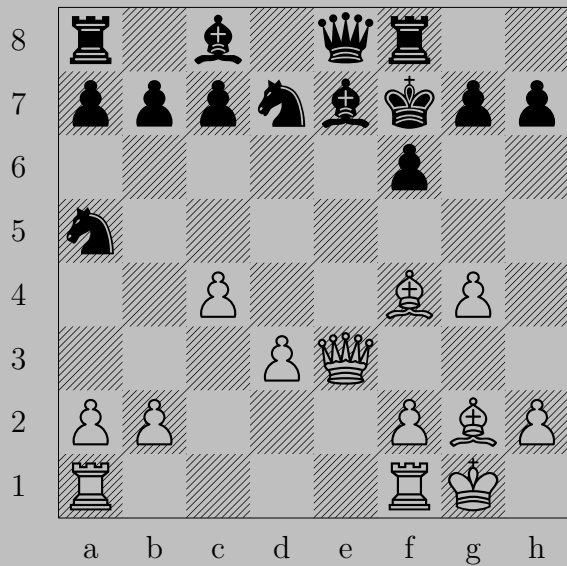


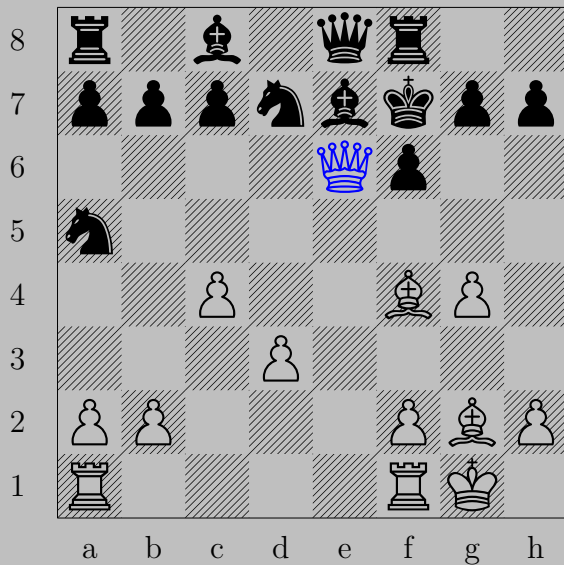
1003



♚×h7+, ♔×h7  
♙×g5



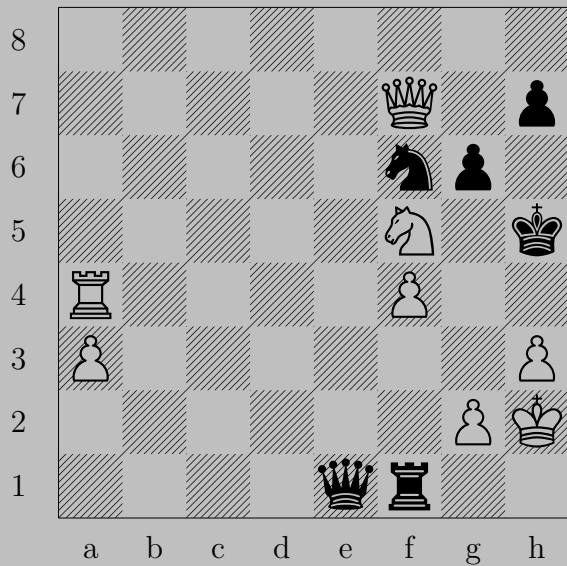




♙e6+

If ♖×e6, ♙d5. If ♖g6, ♙e4.

1005

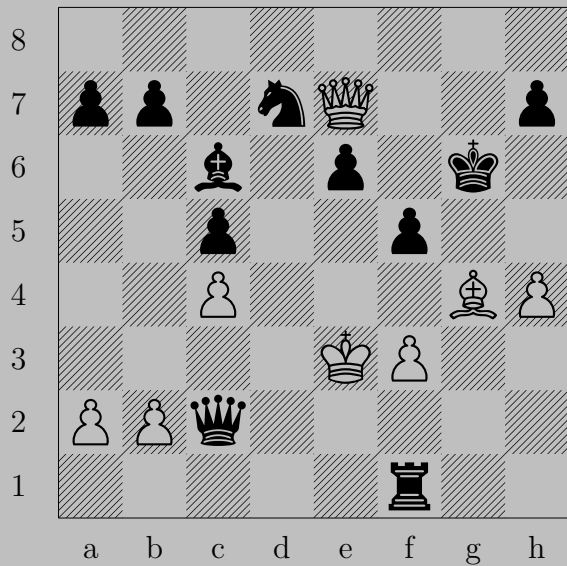


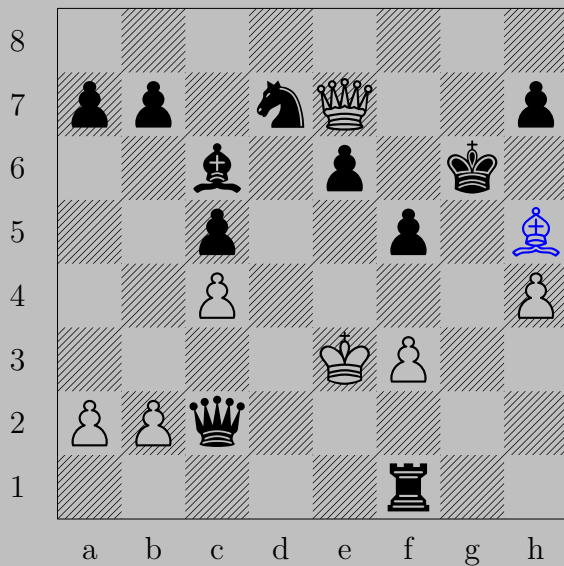
1005



♙g4+, ♞xg4

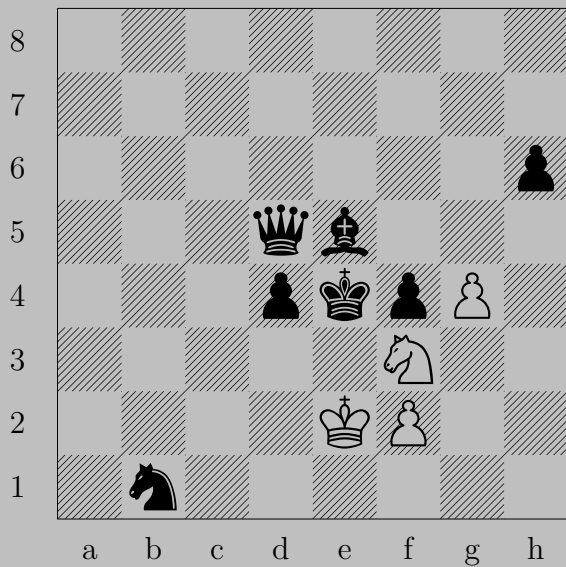
♔xh7





♞h5+, ♚xh5 or ♚h6  
 ♔g5

1007



1007



♞g5+, ♙xg5  
♙f3







$\text{N}g6$

If  $\text{P} \times g6$ ,  $\text{P} \times g6$ . If  $\text{P}h4$ ,  $\text{N}f8$ .



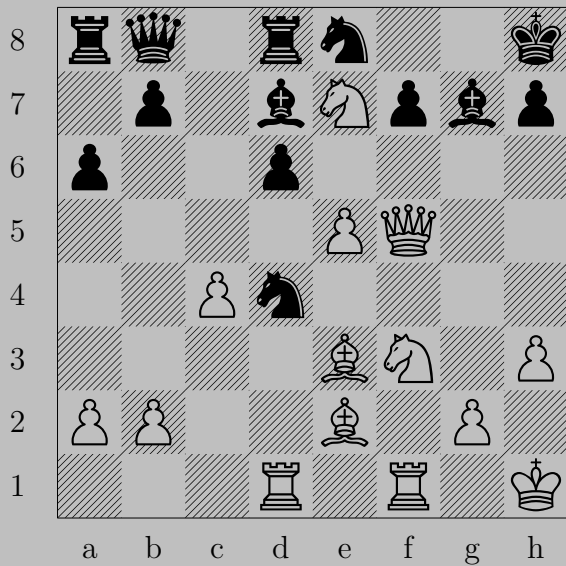
1009



♚h3+, ♙xh3

♙g3

1010





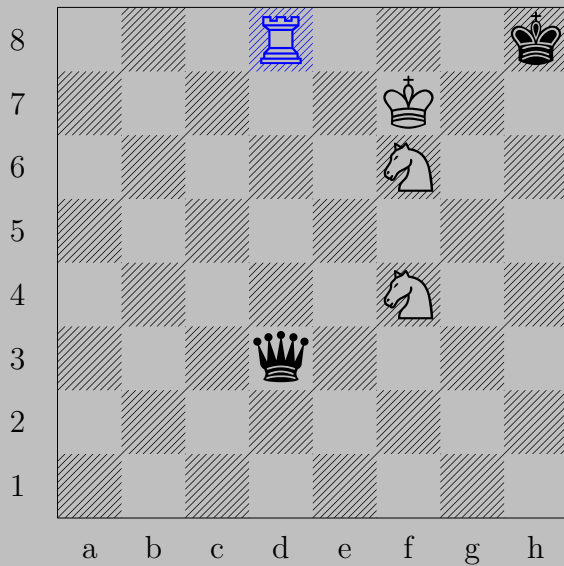
$\text{Ng5}$

If  $\text{Qxf5}$  or  $\text{Nxf5}$  or  $\text{Nf6}$ ,  $\text{Nxf7}$ .

Otherwise,  $\text{Qxh7}$ .



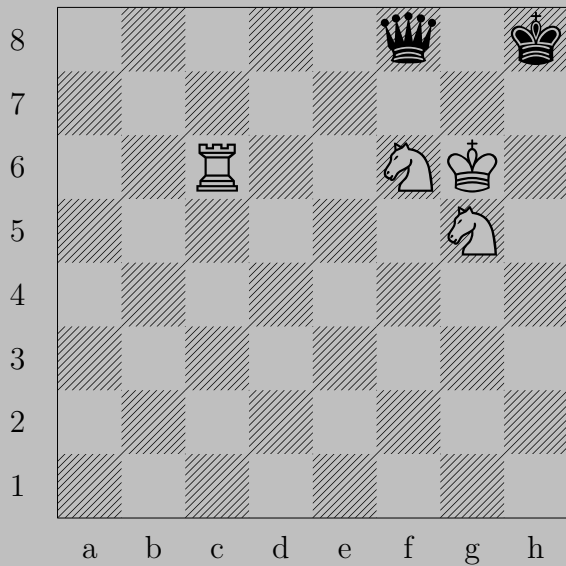
1011



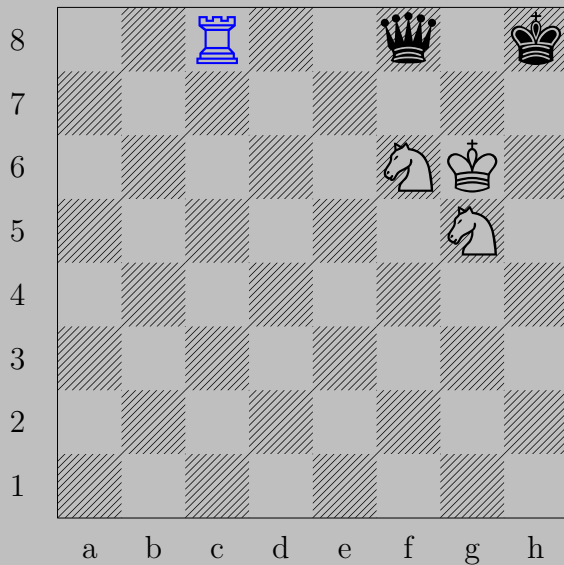
$\text{♖d8+}, \text{♚xd8}$   
 $\text{♞g6}$



1012



1012



$\text{Rc8}$

If  $\text{Kg8+}$ ,  $\text{Rxg8}$ .

Otherwise,  $\text{Nf7}$ .

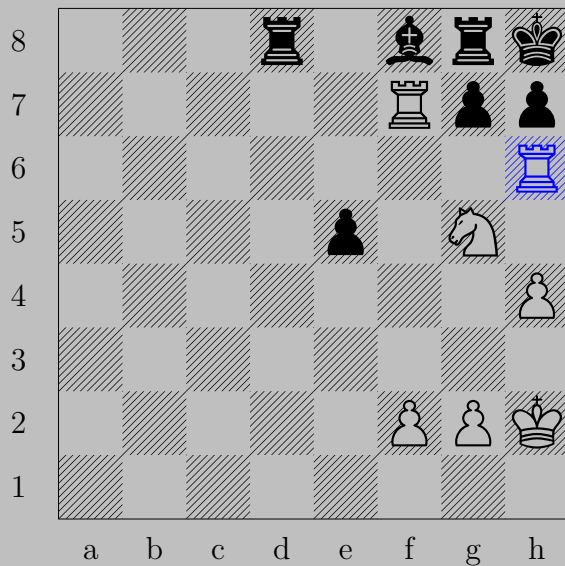


1013



Ra6+, Bxa6  
Nc6

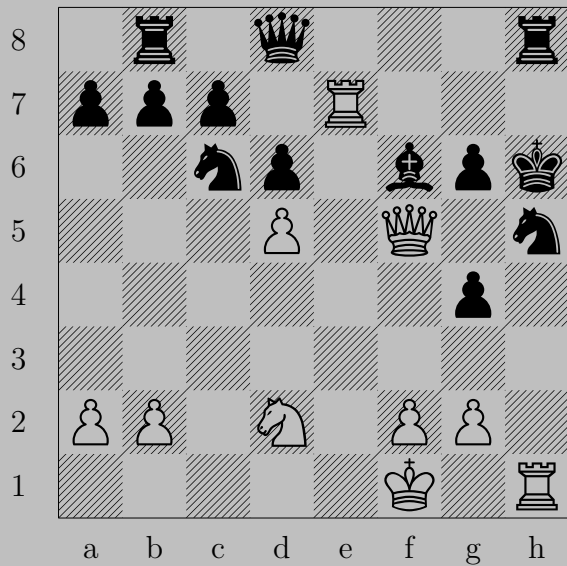




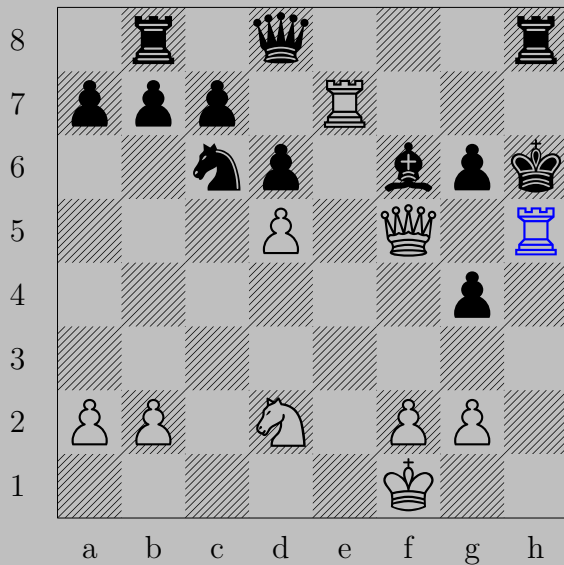
Rh6

If Rh6, Rh7.

Otherwise, Rh7.



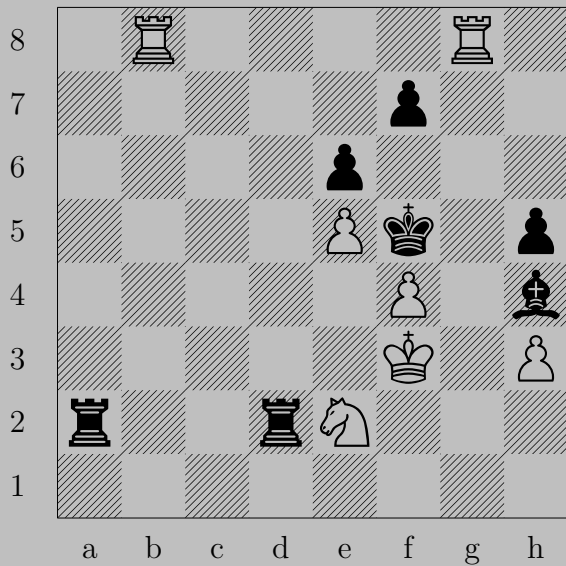
1015



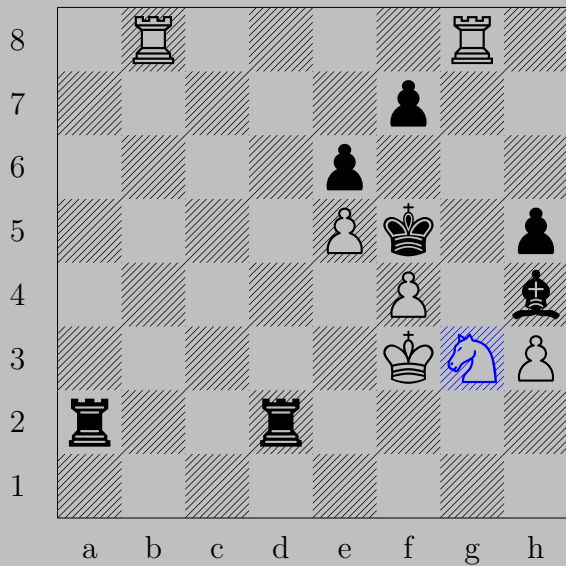
$\text{♖} \times \text{h}5 +, \text{♜} \times \text{h}5$   
 $\text{♚} \times \text{f}6$



1016

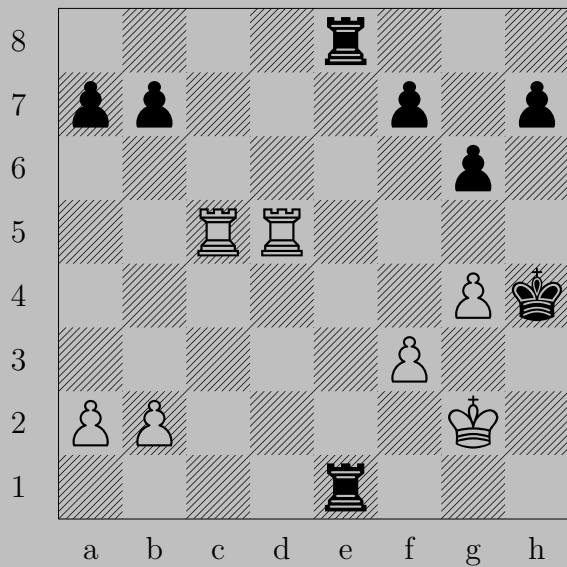


1016

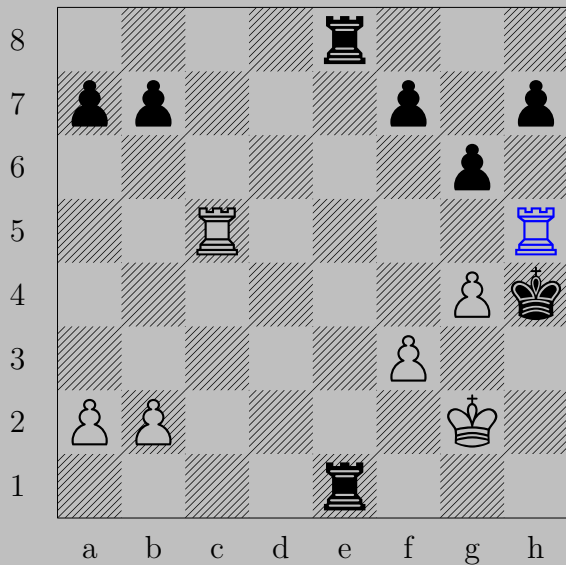


$\text{Ng3+}, \text{Bxg3}$   
 $\text{Rg5}$

1017

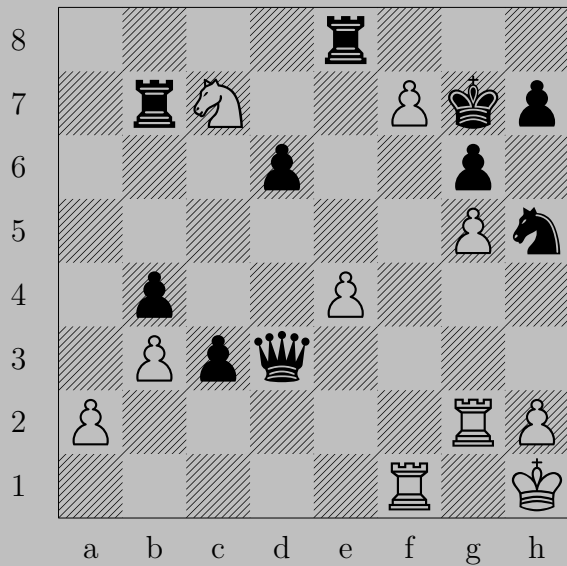


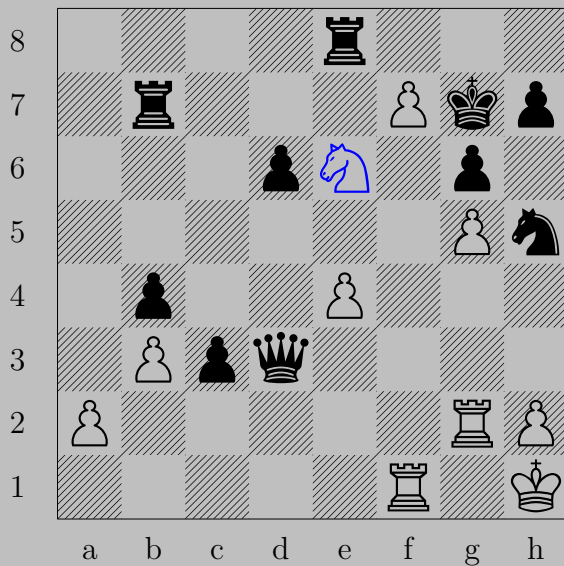
1017



Rh5+, Pxh5

Rxh5

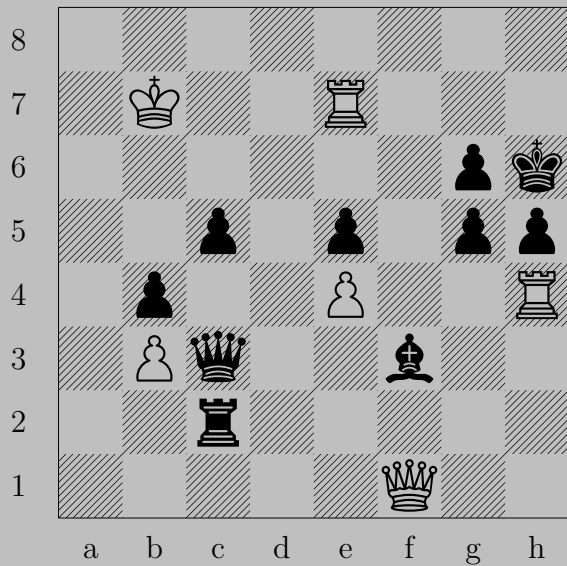


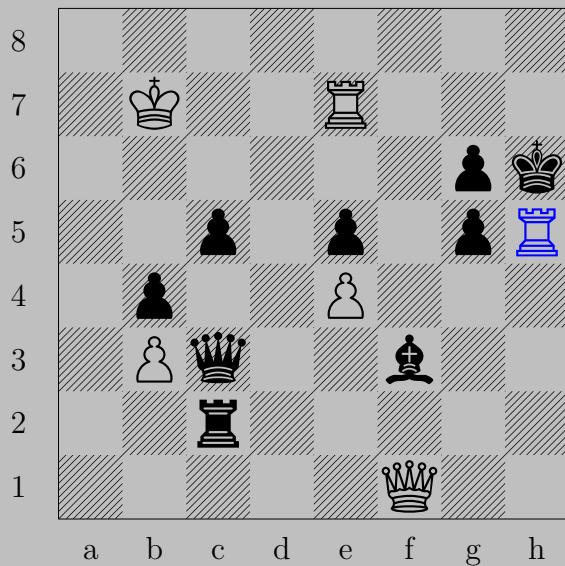


$\text{N}e6+$

If  $\text{R}xe6$ ,  $\text{B}f8(\text{Q})$ . If  $\text{K}h8$ ,  $\text{B}xe8(\text{Q})$ .

1019





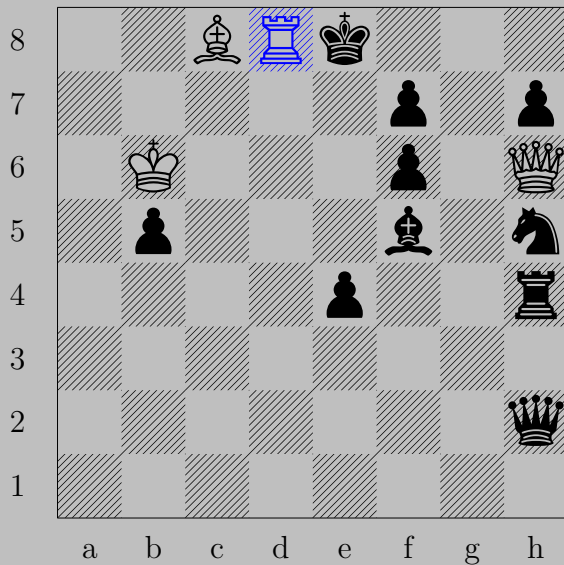
$\text{R} \times \text{h}5+$

If  $\text{P} \times \text{h}5$ ,  $\text{Q} \times \text{a}6$ . If  $\text{K} \times \text{h}5$ ,  $\text{Q} \times \text{e}8$ . If  $\text{K} \times \text{h}5$ ,  $\text{Q} \times \text{h}3$ .





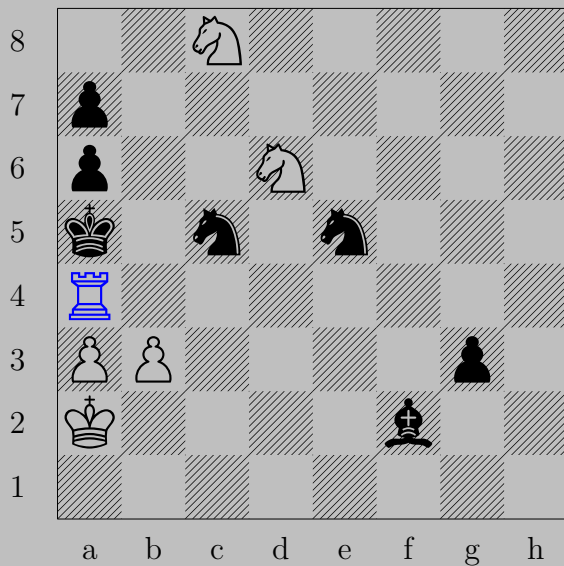
1020



♖d8+, ♚xd8 or ♚e7  
♙f8



1021



$\text{R}a4+$ ,  $\text{N}xa4$

$\text{P}b4$



1022



$\text{Rg8+}, \text{Rxg8}$   
 $\text{fxe7}$



1023

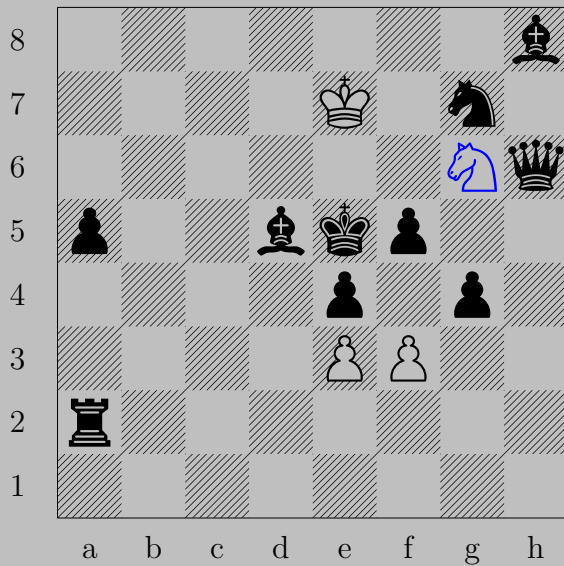


♖d5+. ♔xd5  
♘f3





1024



♞g6+, ♚xg6  
♙f4

1025

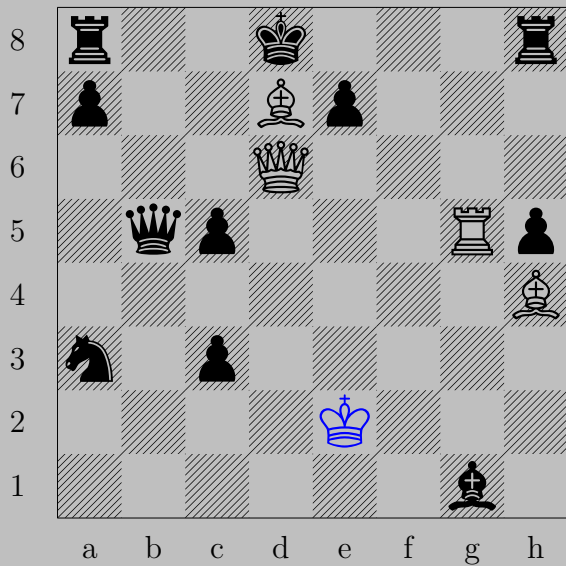


1025



Rxe5+, Nxe5 or Kd5  
Rd4

1026





$\text{♙} \times b5+$

If  $\text{♜} \times d6$ ,  $\text{♖} \times c5$ . If  $\text{♚} c8$ ,  $\text{♙} a6$ .

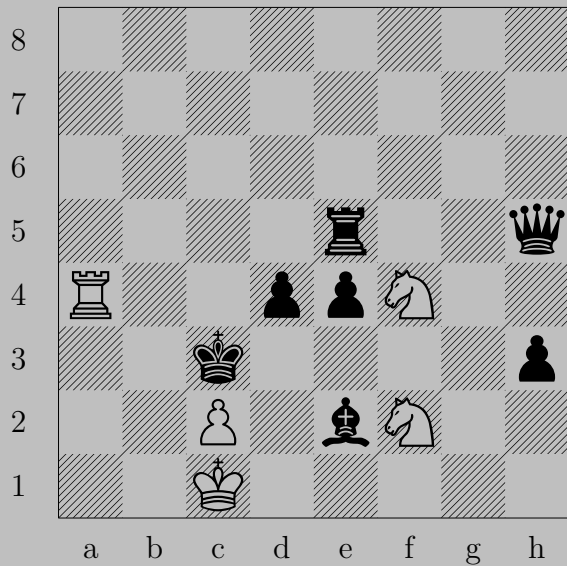


1027



$\text{Nf6+}$ ,  $\text{Qxh1}$  or  $\text{Bh6}$  or  $\text{Nh7}$   
 $\text{Qg8}$



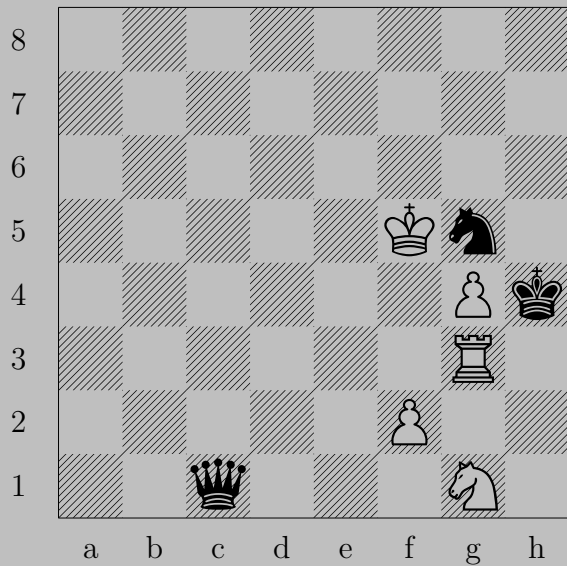


1028

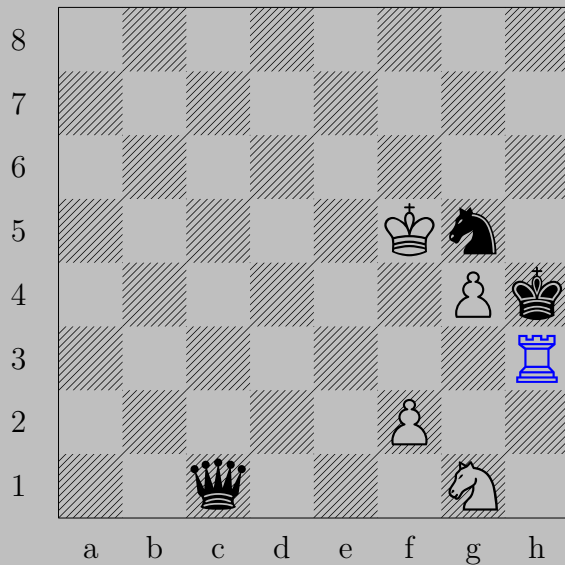


$\text{♞d5+}, \text{♖xd5}$

$\text{♞xe4}$

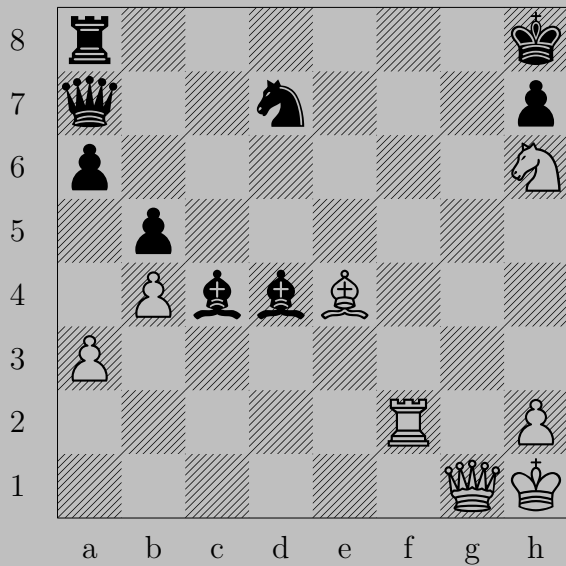


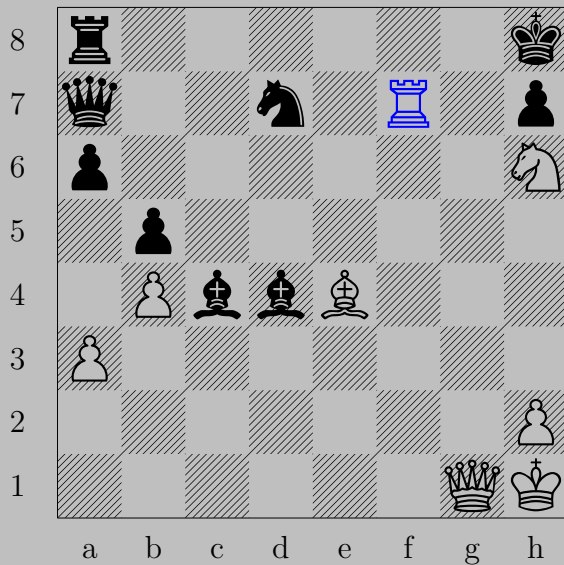
1029



♖h3+, ♞xh3  
♞f3

1030





$\text{Rf7}$

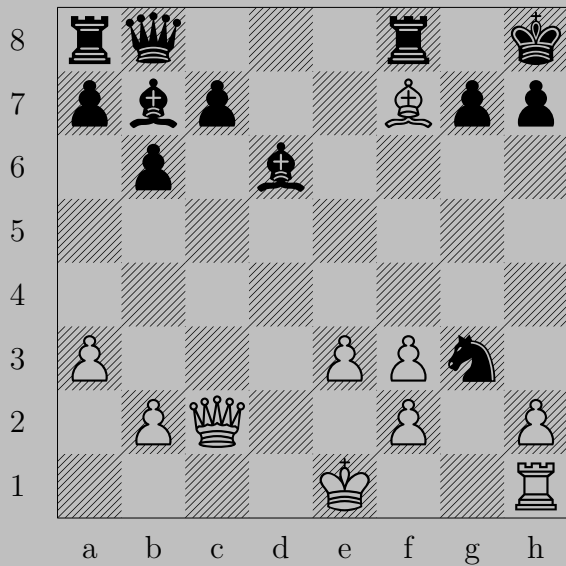
If  $\text{Qxf7}$ ,  $\text{Nxf7}$ . If  $\text{Nf6}$  or  $\text{Ne5}$ ,  $\text{Qg7}$ . If  $\text{Nb6}$  or  $\text{Nb8}$  or  $\text{Nc5}$  or  $\text{Nf8}$ ,  $\text{Qxd4}$ .  
Otherwise,  $\text{Rhx7}$ .



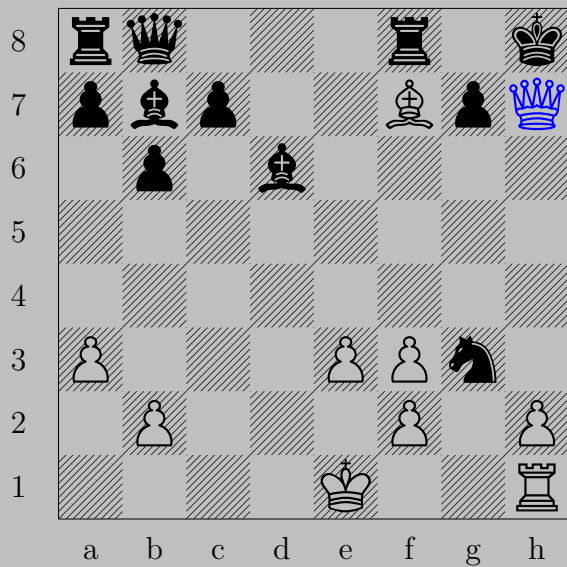


♘h7+, ♔×h7 or ♔f7  
 ♕g8(♔)

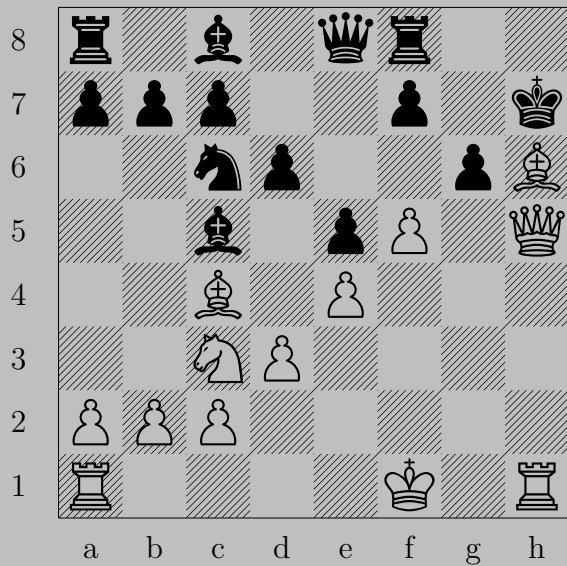




1032



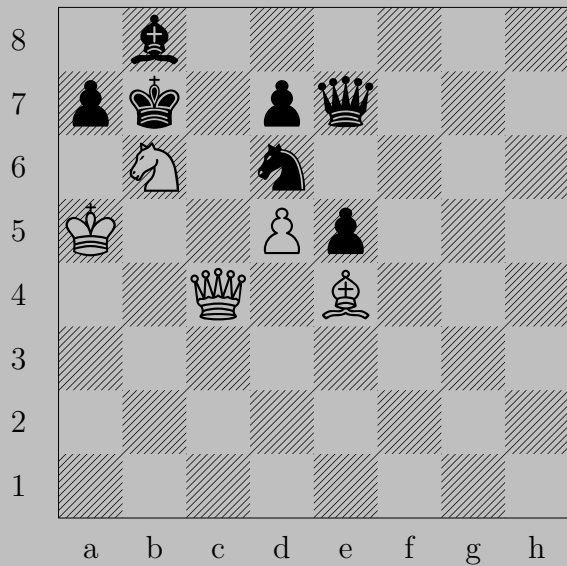
♙×h7+, ♚×h7  
♙×g3



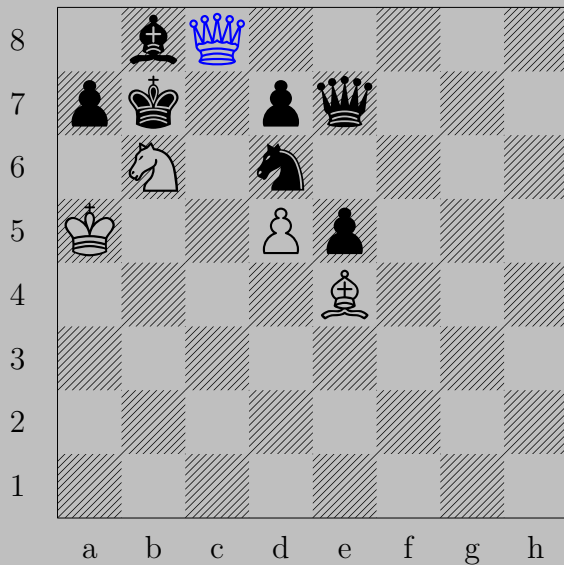


♙×g6+

If ♖×g6, ♜×f8. If ♔h8, ♚g7.

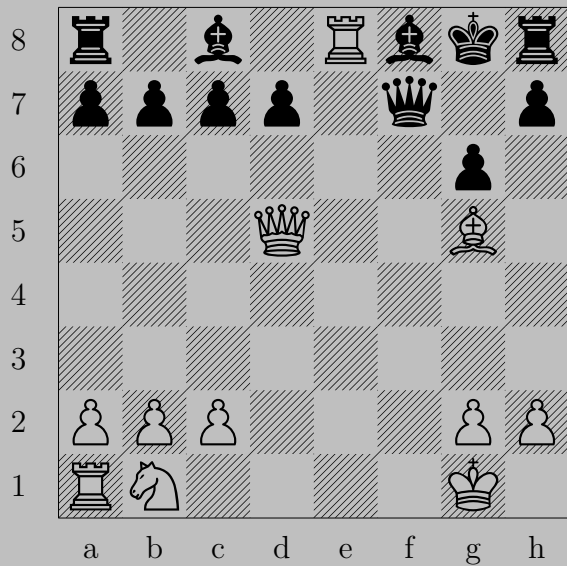


1034

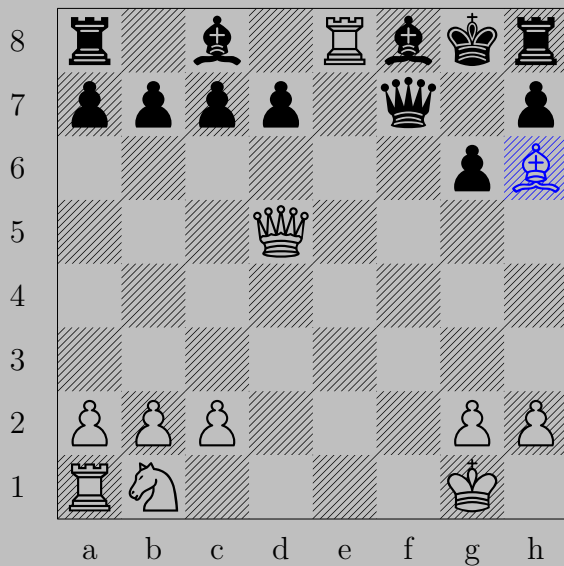


♚c8+, ♘xc8  
♙d6

1035



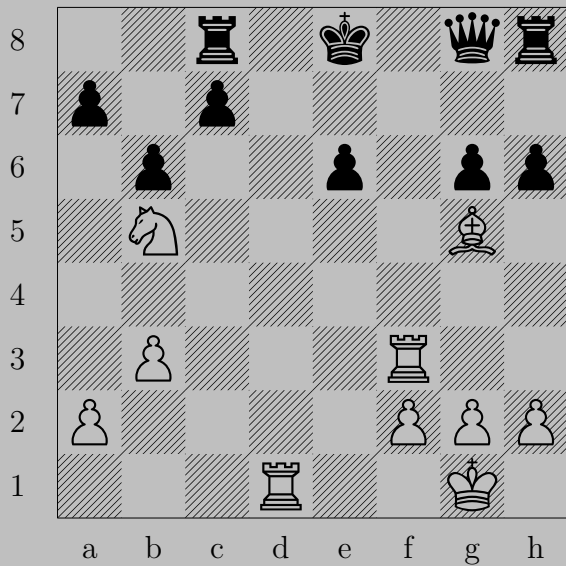
1035



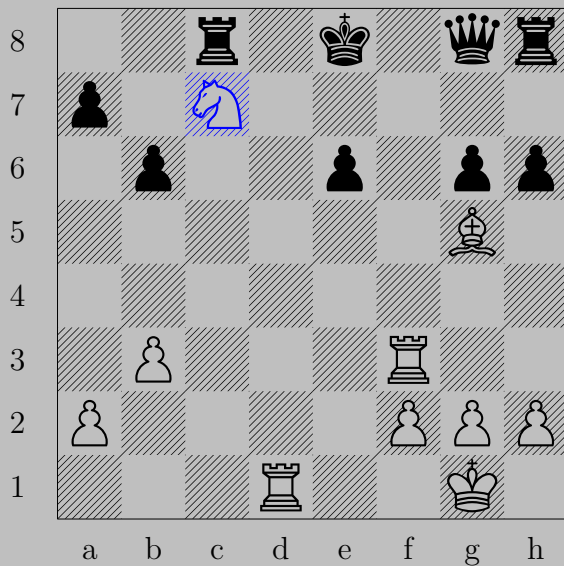
$\text{♗h7}$ ,  $\text{♕xd5}$  or anything else

$\text{♖xf8}$



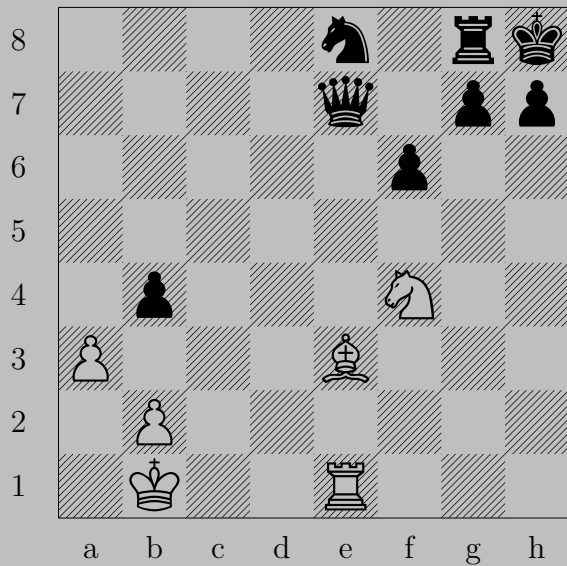


1036

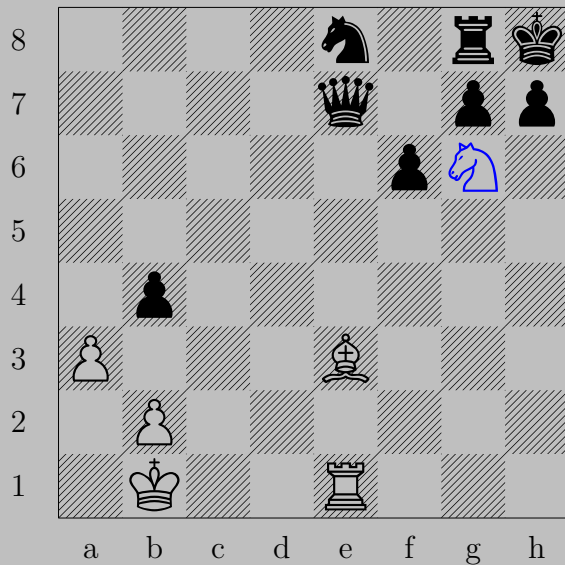


$\text{Nxc7+}, \text{Rxc7}$   
 $\text{Rd8}$

1037

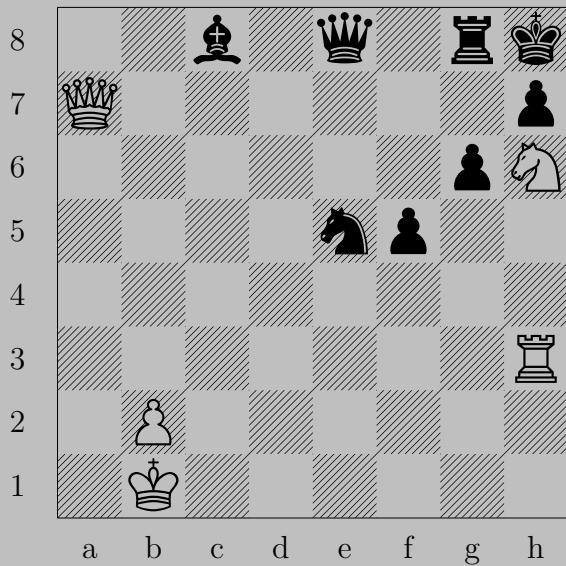


1037

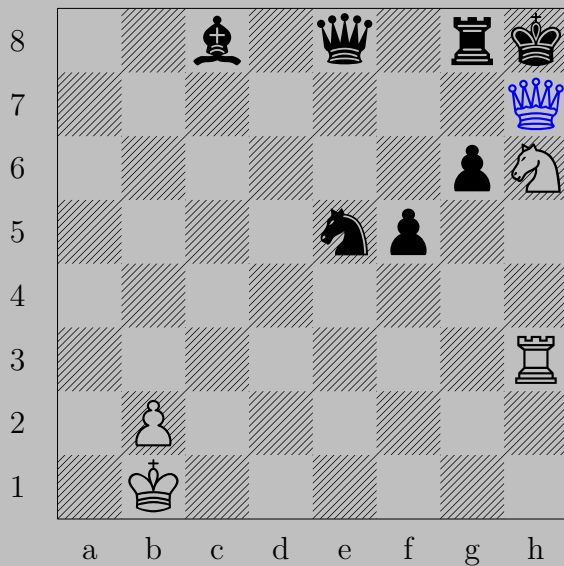


♞g6+, ♟xg6  
♖h1

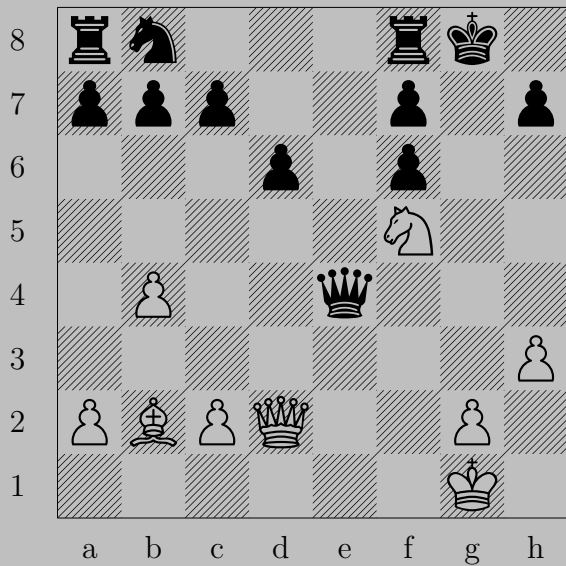
1038



1038



♚×h7+, ♗×h7  
♘×f5





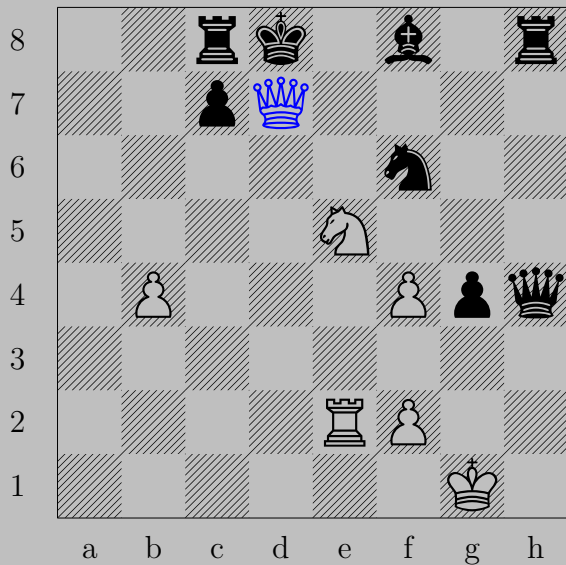
♔g5+

If ♖xg5, ♜h6. If ♙h8, ♔g7.



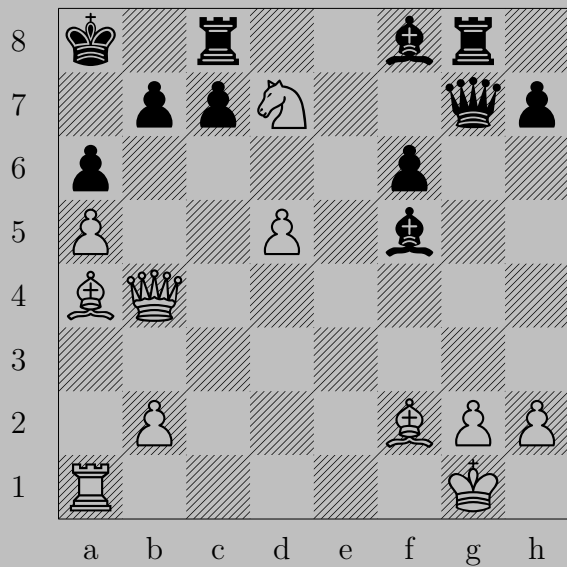


1040

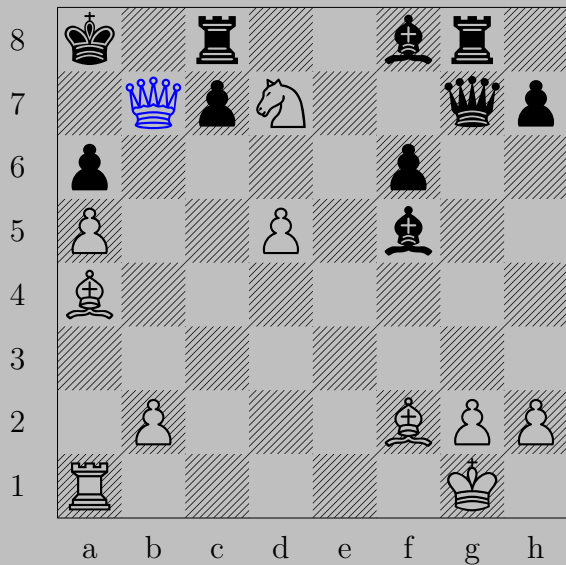


♙xd7+, ♘xd7

♘f7



1041



♙×b7+, ♔×b7  
♗c6

1042



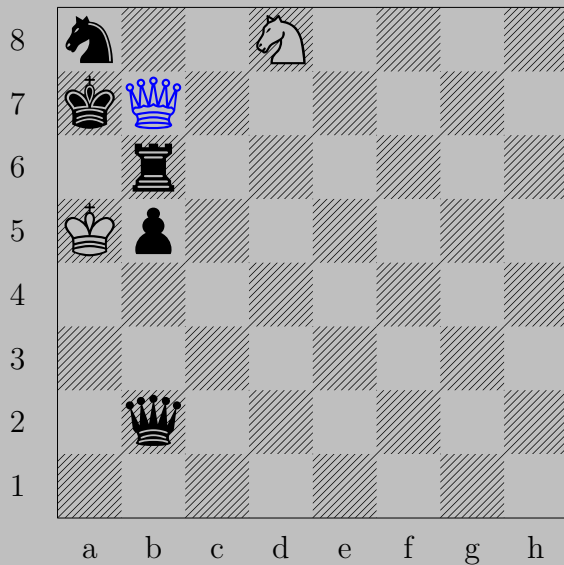
1042



♙d7+, ♖x♙d7  
♖x♙d7



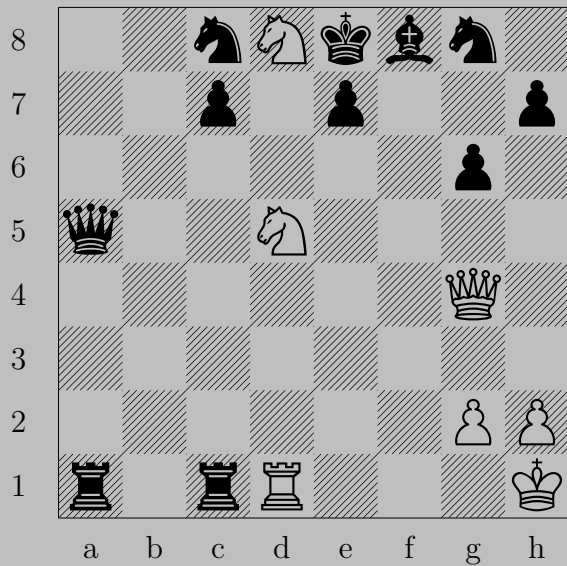
1043



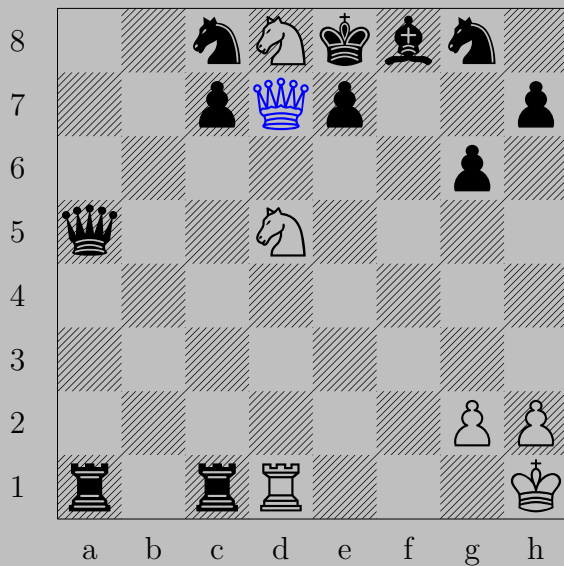
♛b7+, ♖xb7

♞c6



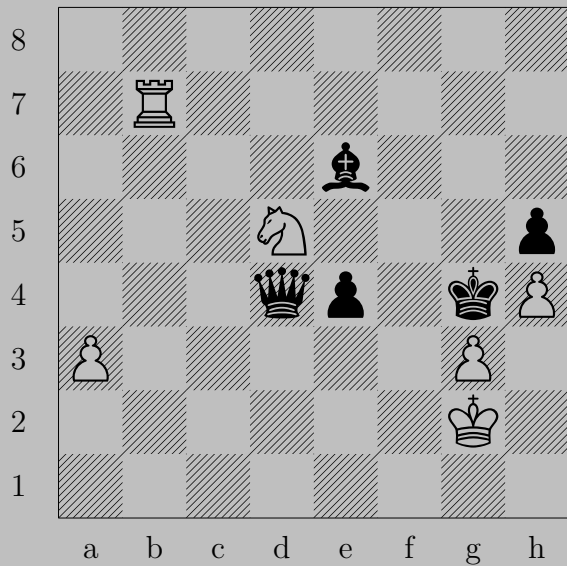


1044

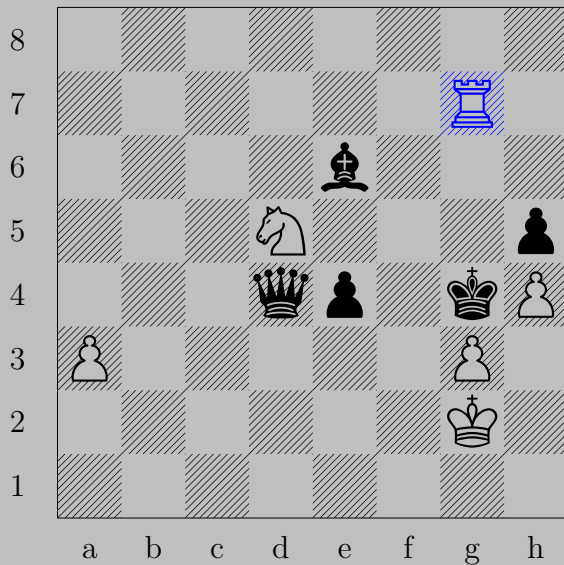


♔d7+, ♔xd7  
♟f6

1045



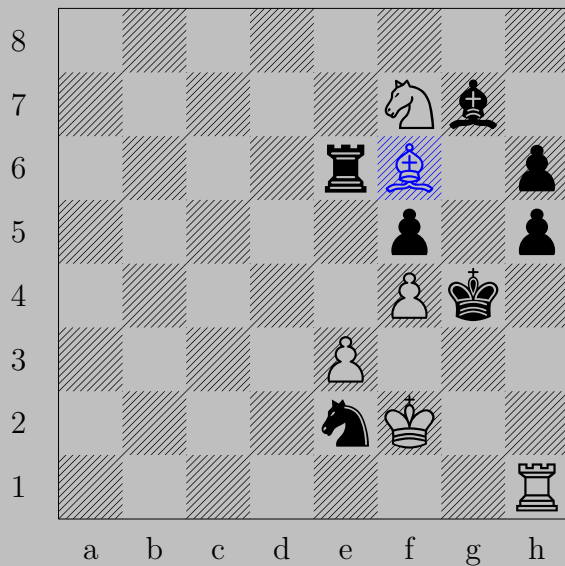
1045



Rg7+

If Kxg7, Ne3. If Kf4, Rg4.

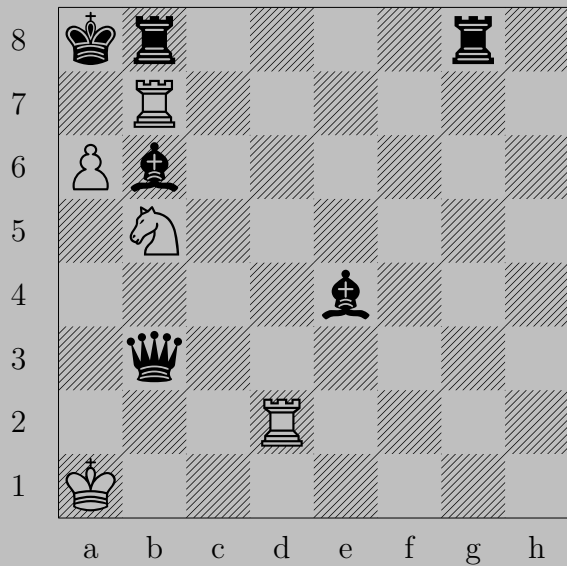




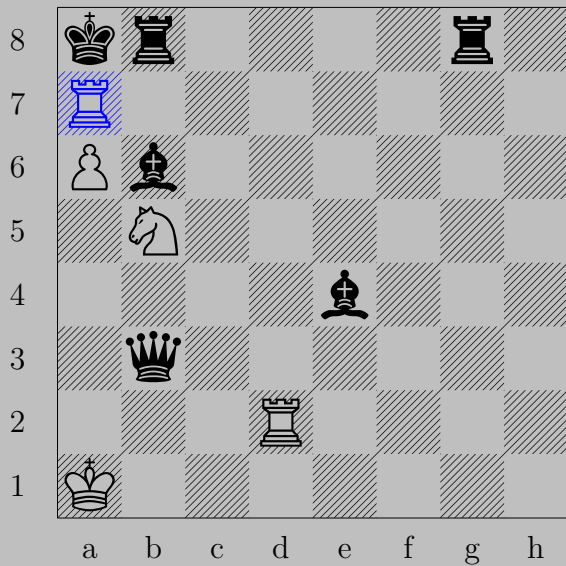
♔f6

If ♕×f6, ♖h6. If ♖×f6, ♗e5. If ♖h5, ♖×h5.

Otherwise, ♖h5.



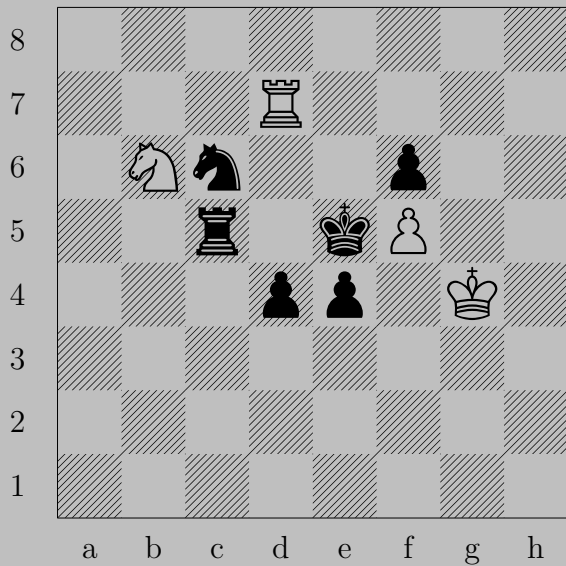
1047



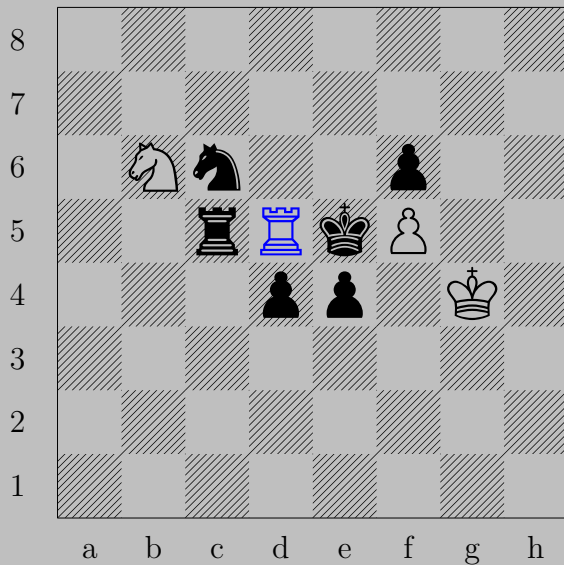
$\text{R}a7+, \text{B}xa7$   
 $\text{N}c7$



1048



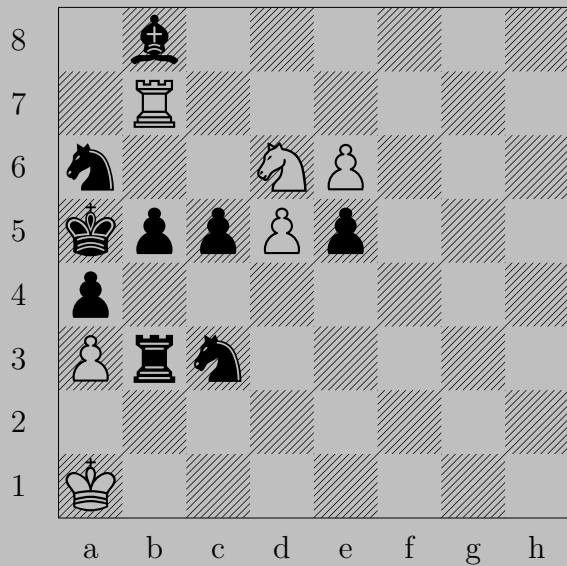
1048



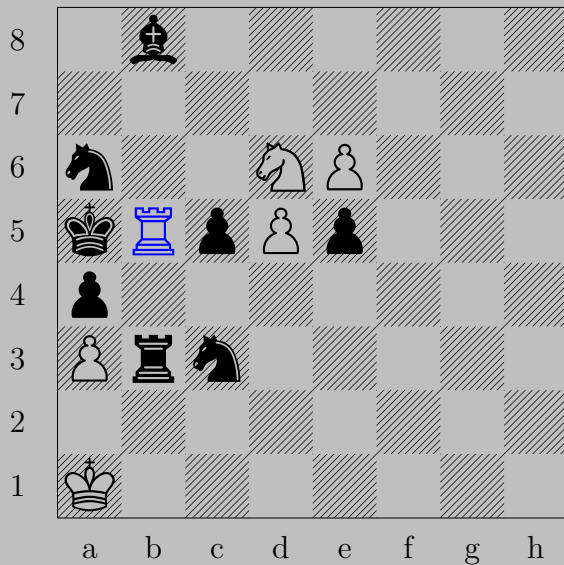
♖d5+, ♖×d5

♘c4

1049



1049



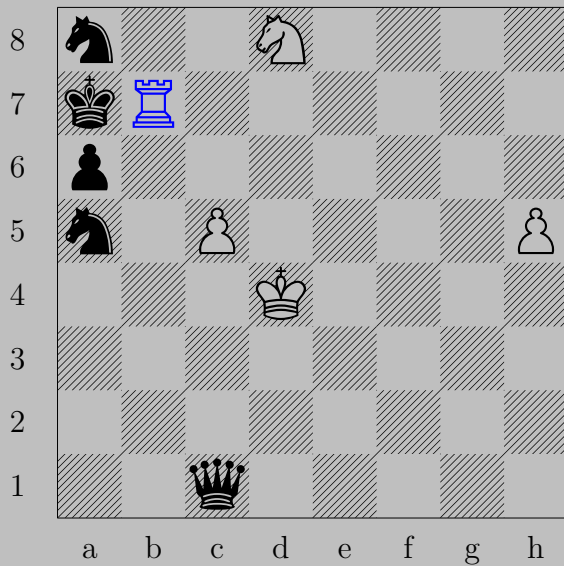
♖×b5+, ♞×b5 or ♞×b5

♞c4

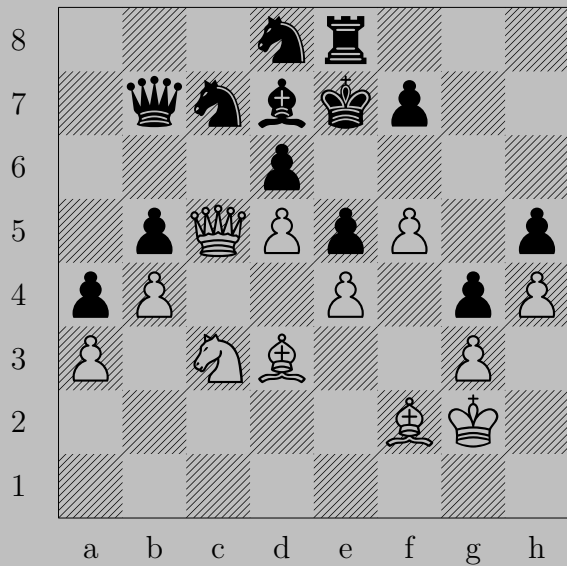
1050



1050



$\text{Rb7+}, \text{Nc6}$   
 $\text{Nc6}$



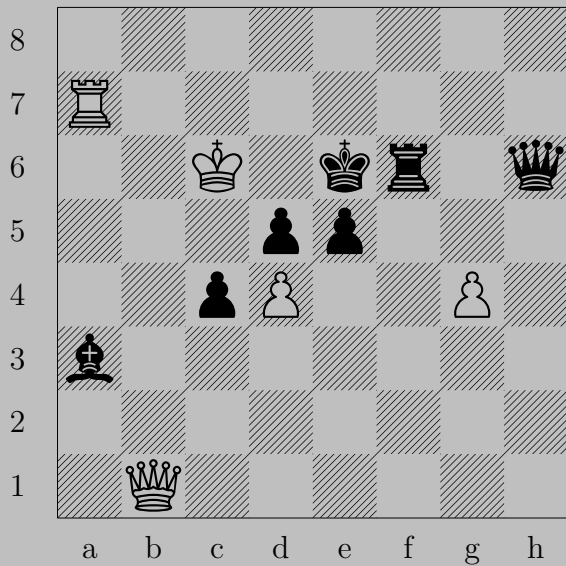
1051

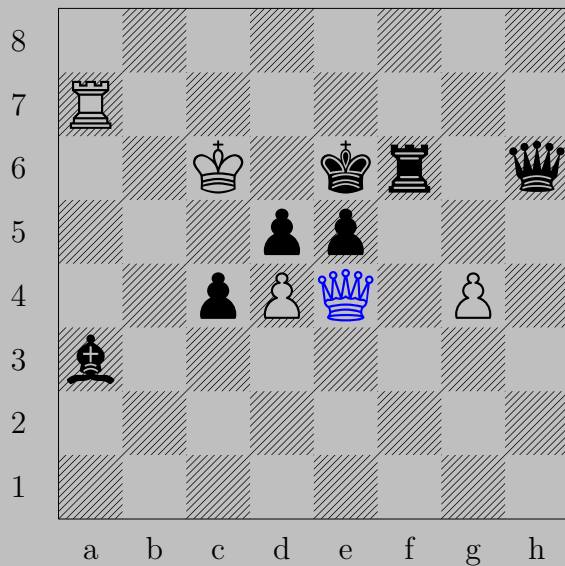


♙×d6+, ♚×d6  
♘c5



1052

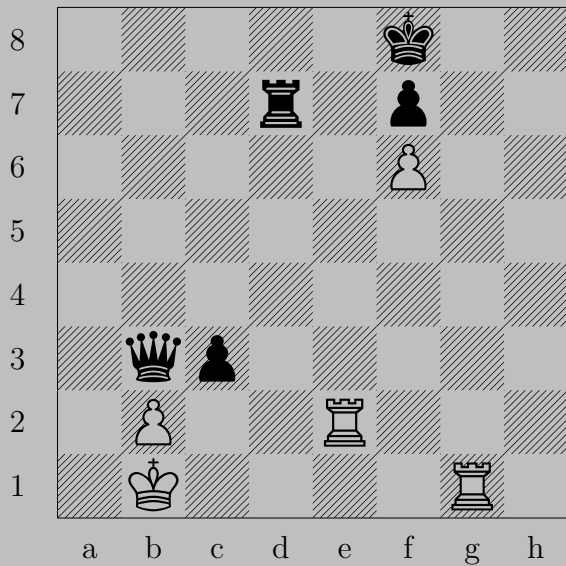




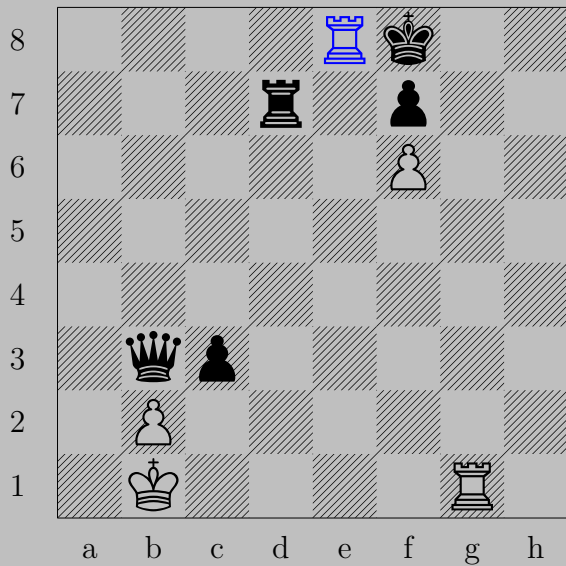
♙e4

If ♖xe4, ♖d5. If ♚h5 or ♚g5 or ♘d6, ♚xd5. If ♖f5, ♚xf5.  
Otherwise, ♚xe5.

1053

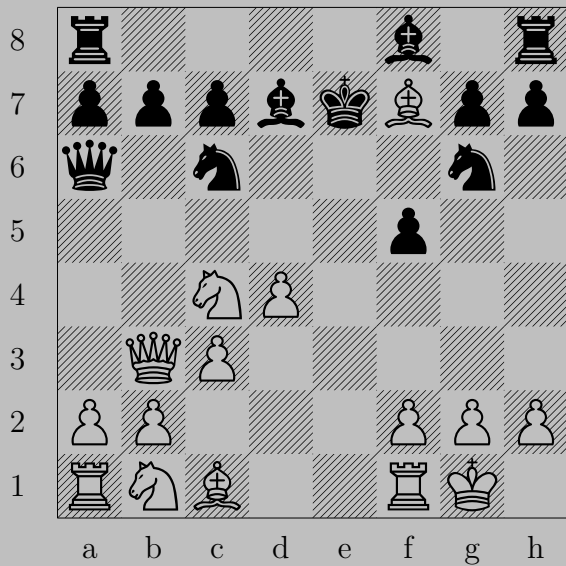


1053



$\text{♖e8+}, \text{♔xe8}$   
 $\text{♖g8}$

1054

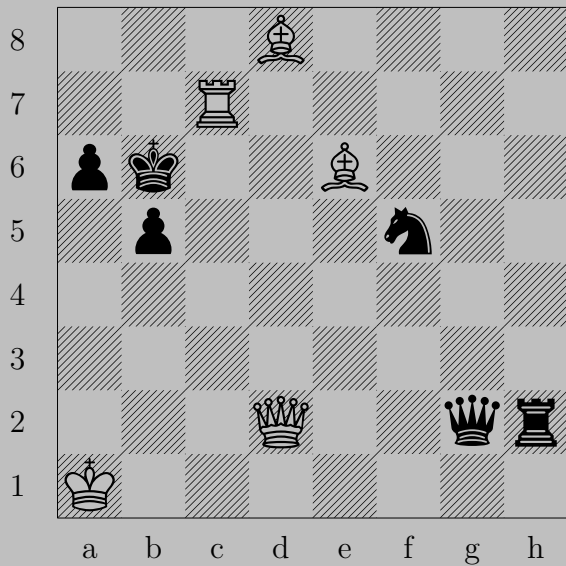


1054

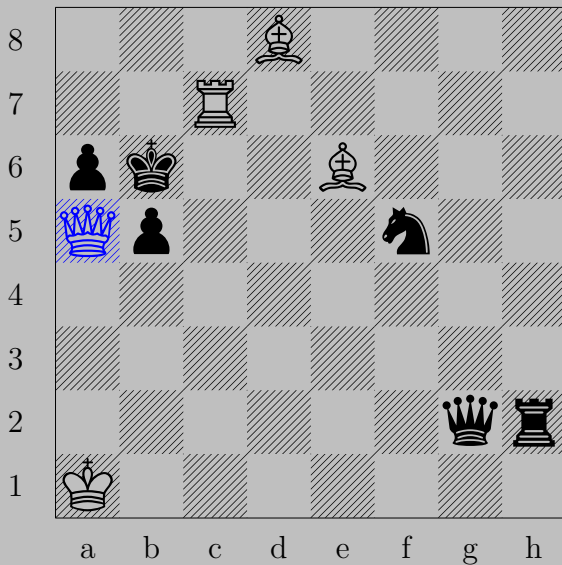


♙g5+, ♚×f7  
♞d6

1055



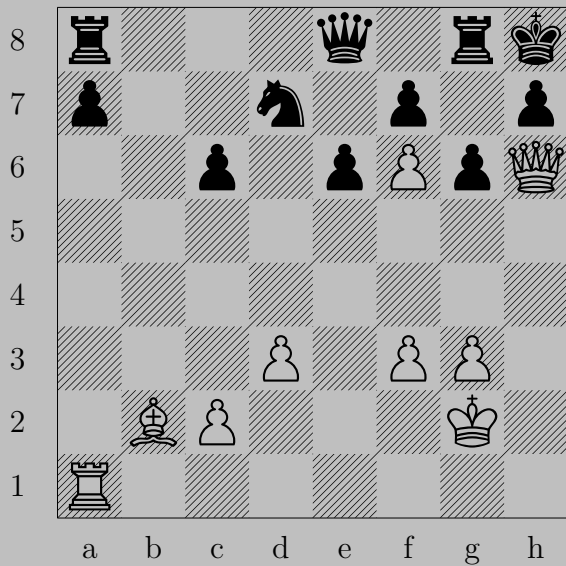
1055



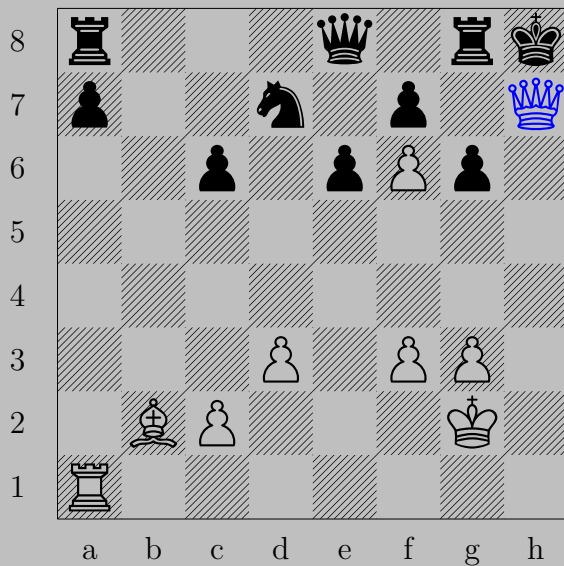
♙a5+, ♔xa5  
♖c4



1056



1056



♚×h7+, ♔×h7  
♖h1

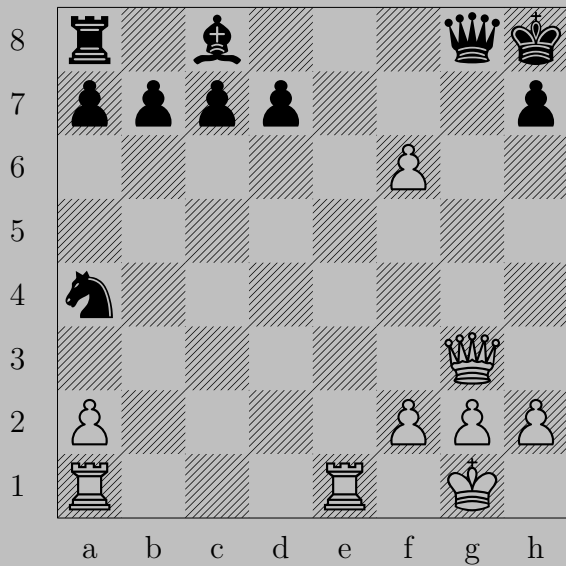


1057

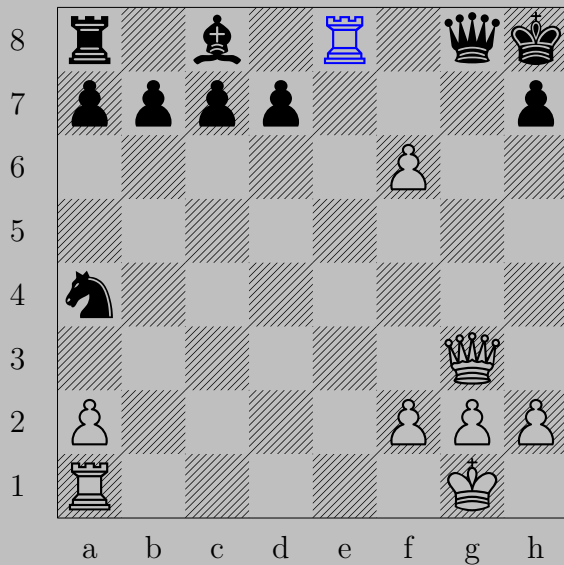


♙f5+, ♘xg5  
♘e6

1058



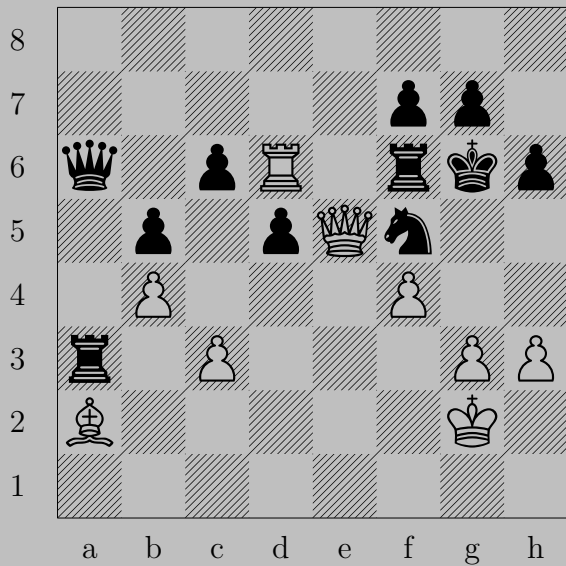
1058



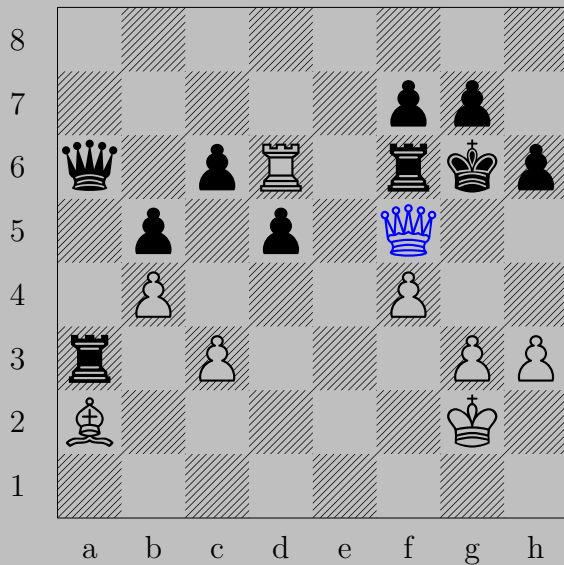
$\text{♖e8}$ , anything

$\text{♔g7}$

1059

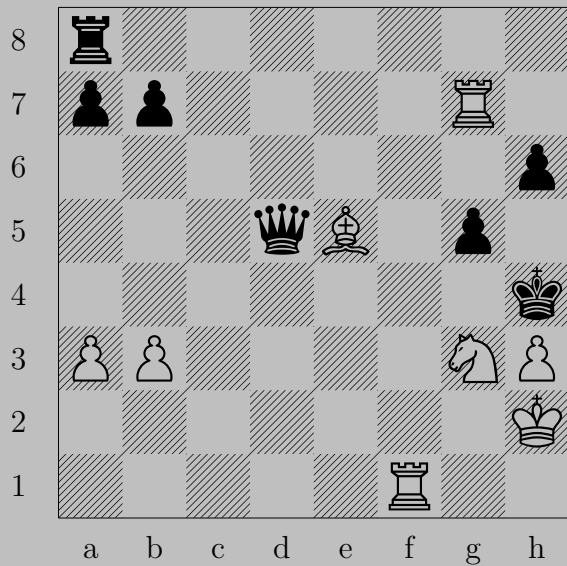


1059



♙×f5+, ♚×f5  
♘b1

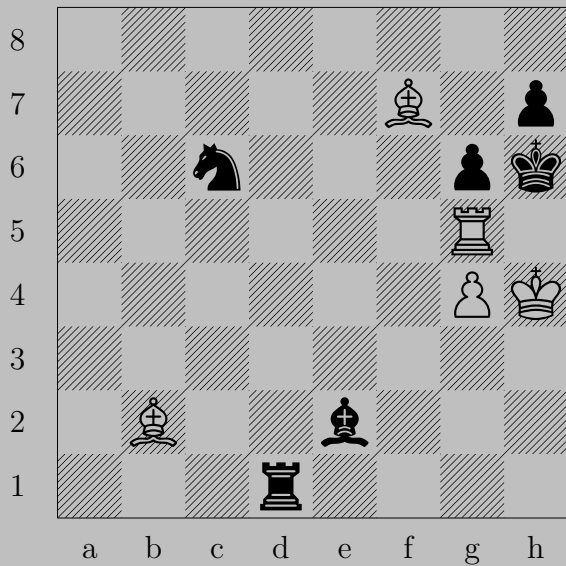




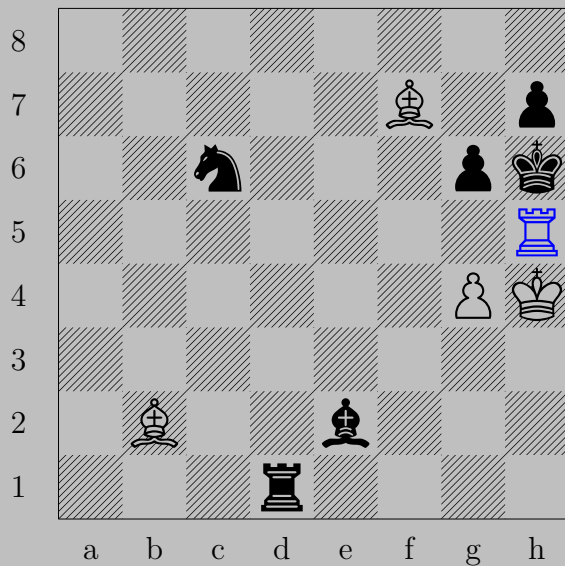
1060



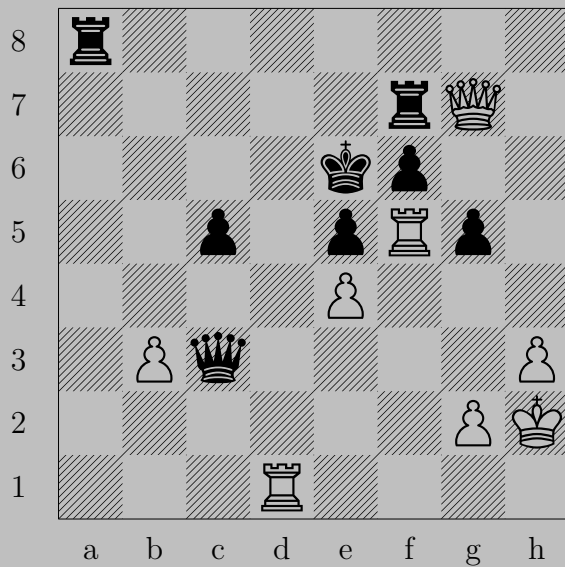
Rf4+, Px4  
Rg4



1061



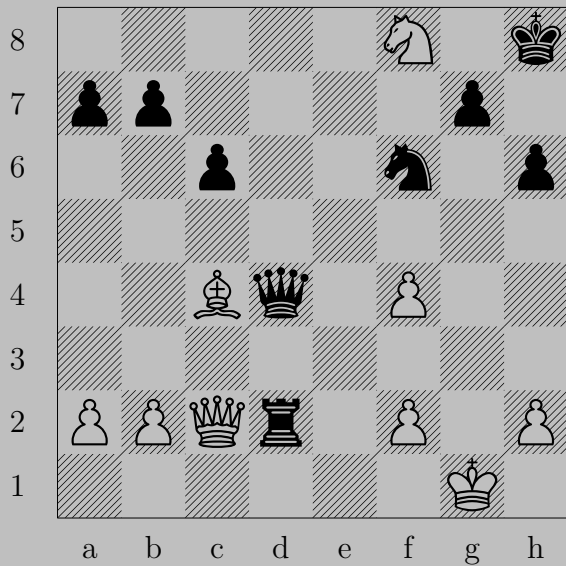
$\text{R}h5+, \text{P} \times h5$   
 $\text{P}g5$



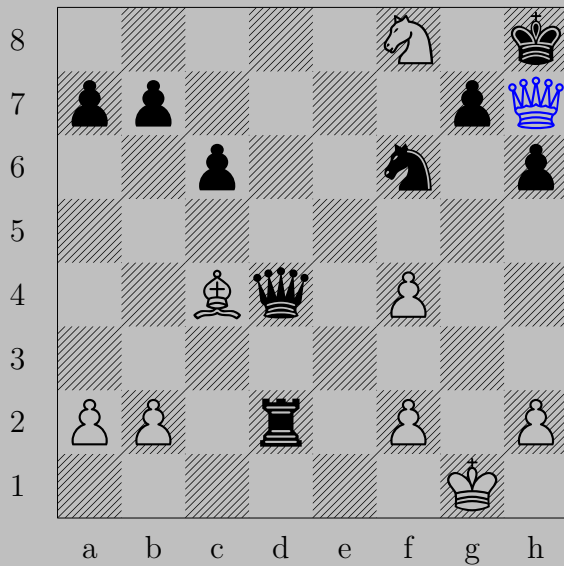


$\text{R}\times\text{f6}+$

If  $\text{R}\times\text{f6}$ ,  $\text{Qd7}$ . If  $\text{Ke7}$ ,  $\text{Q}\times\text{f7}$ .

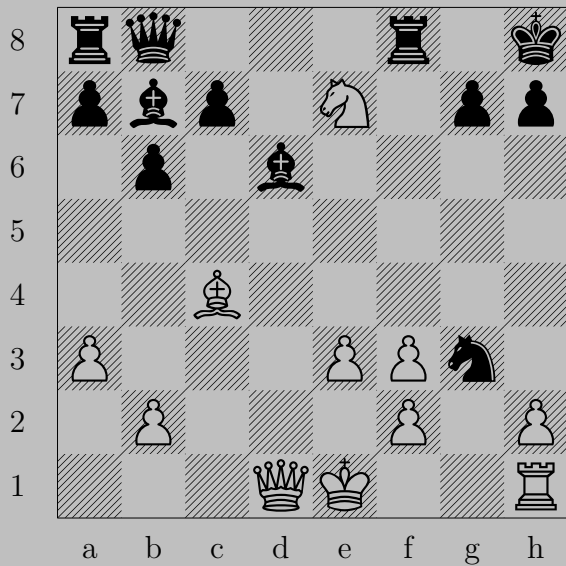


1063



♙h7+, ♘xh7  
♘g6

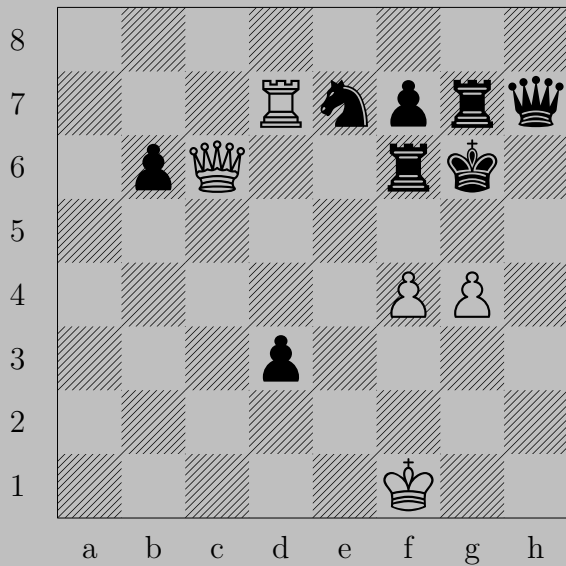




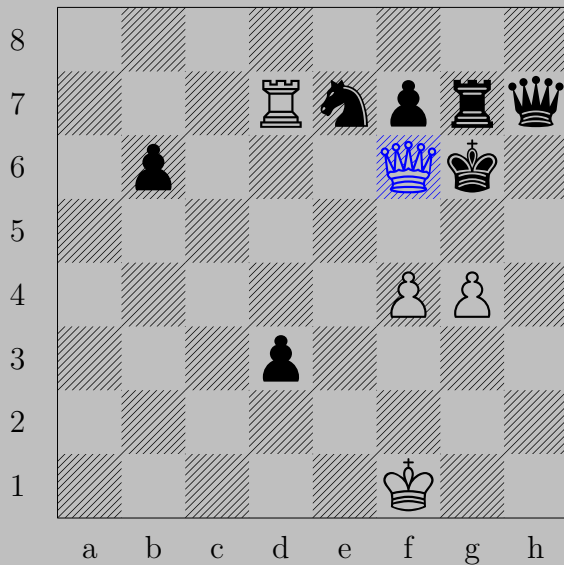


$\text{Ng6+}, \text{Pxg6}$   
 $\text{Pxg3}$

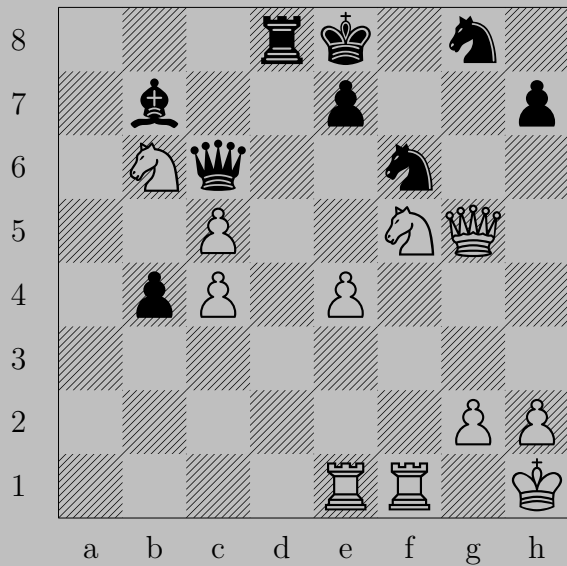
1065



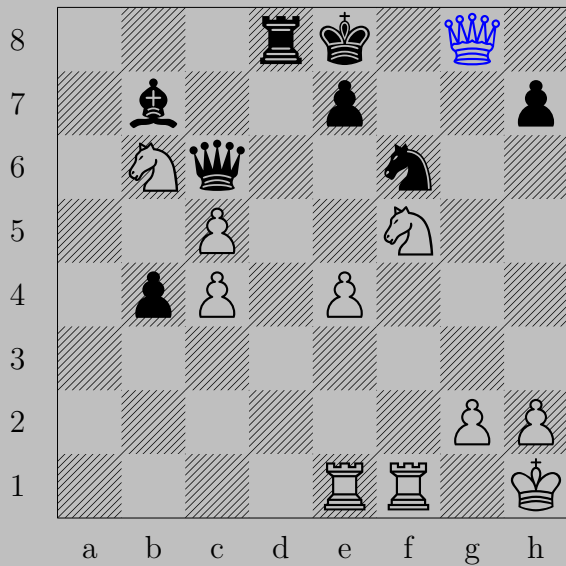
1065






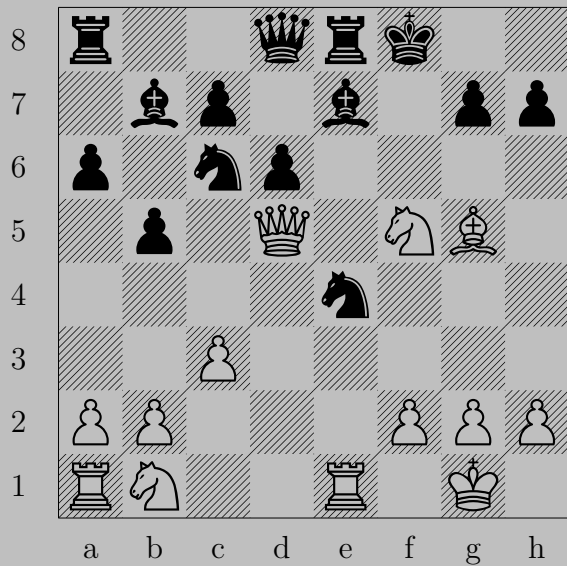
♙×f6+, ♔×f6  
♖d6

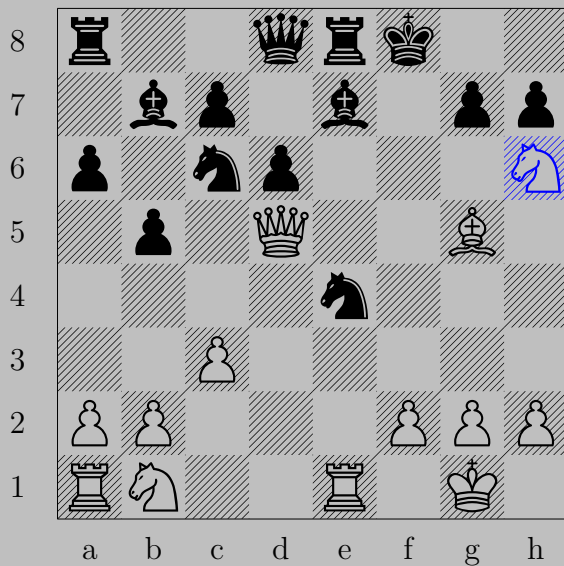


1066



xg8+, xg8  
g7



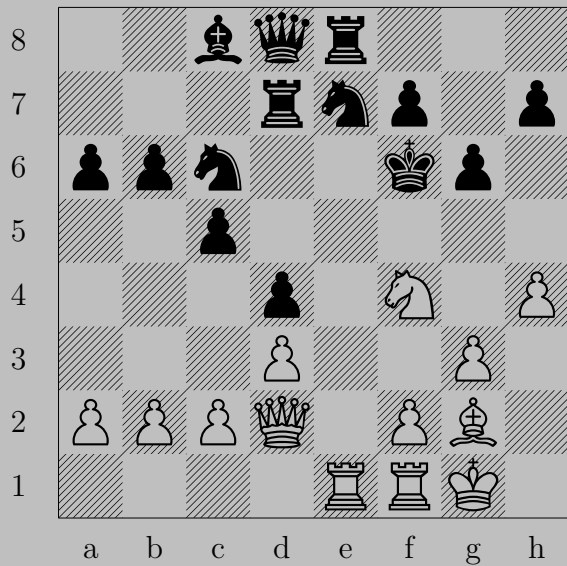


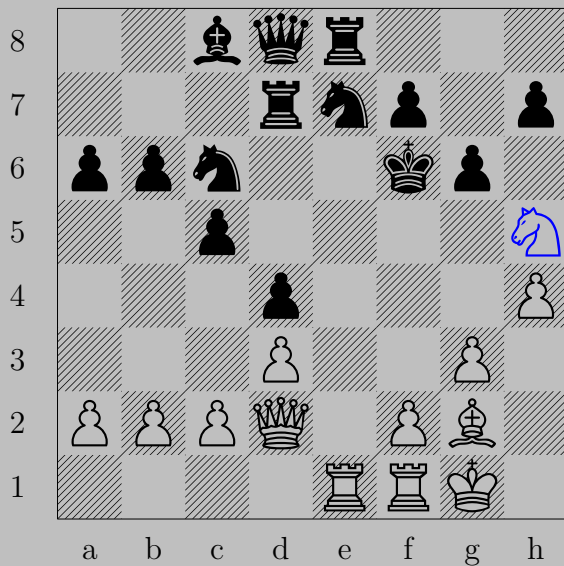
$\text{N}h6$

If  $\text{P}xh6$ ,  $\text{B}xh6$ . If  $\text{N}xg5$  or  $\text{N}e5$ ,  $\text{K}g8$ .

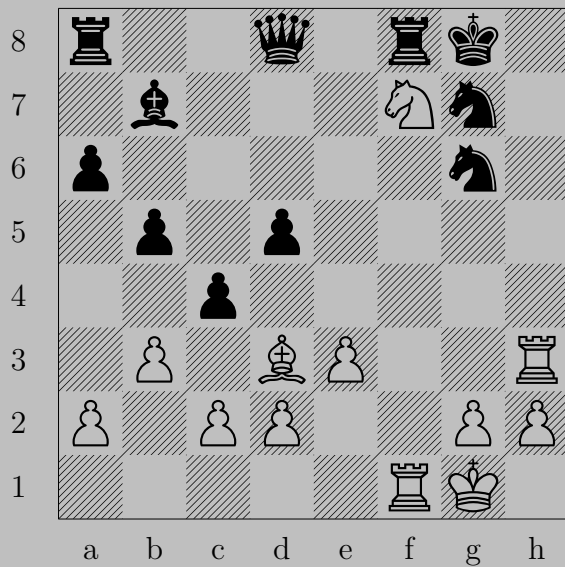
Otherwise,  $\text{K}f7$ .

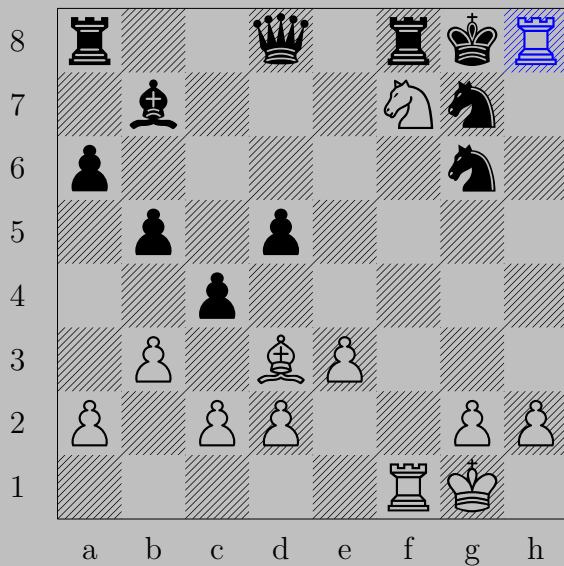






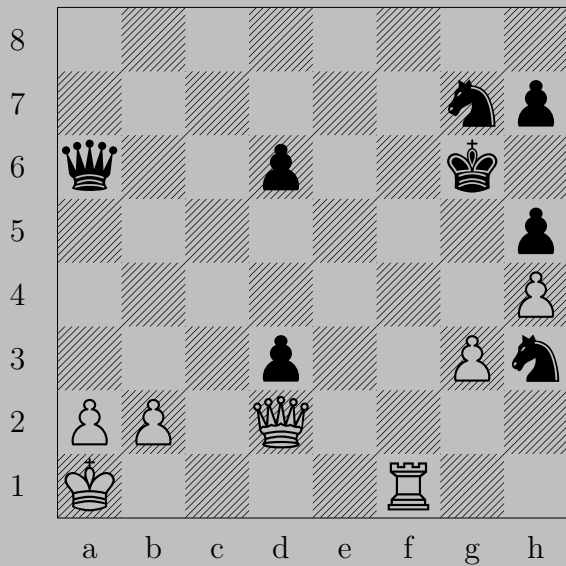
♞h6+, ♟xh6 or ♚f5  
 ♚g5





♖h8+, ♞xh8  
 ♞h6

1070

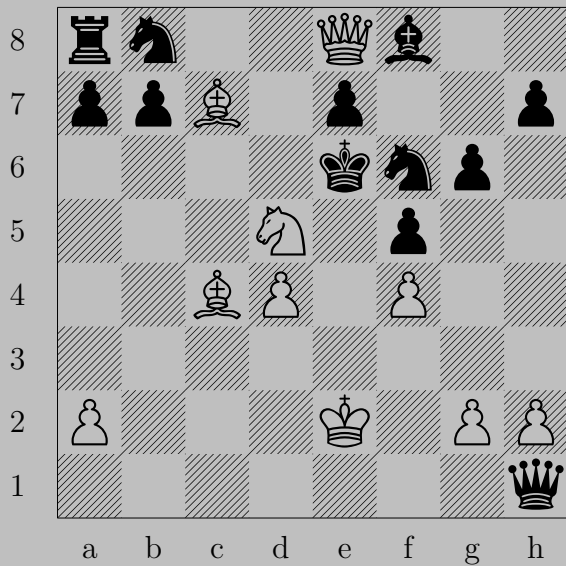


1070



Qh6+, Kxh6  
Rf6

1071



Modified

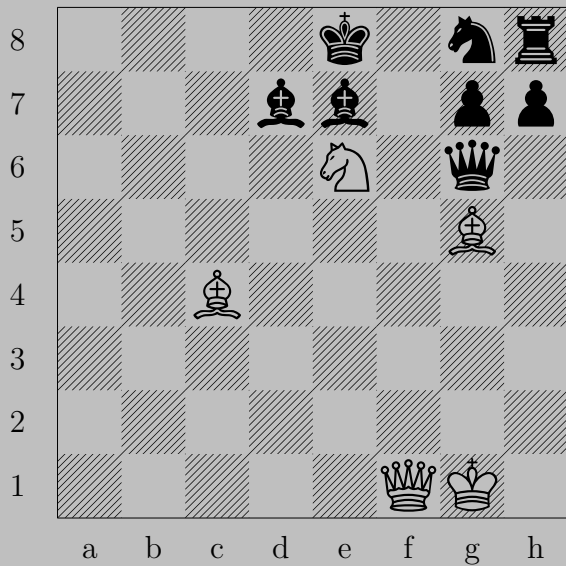
1071



$\text{♞} \times f6+, \text{♔} \times f6$   
 $\text{♔} f7$



1072

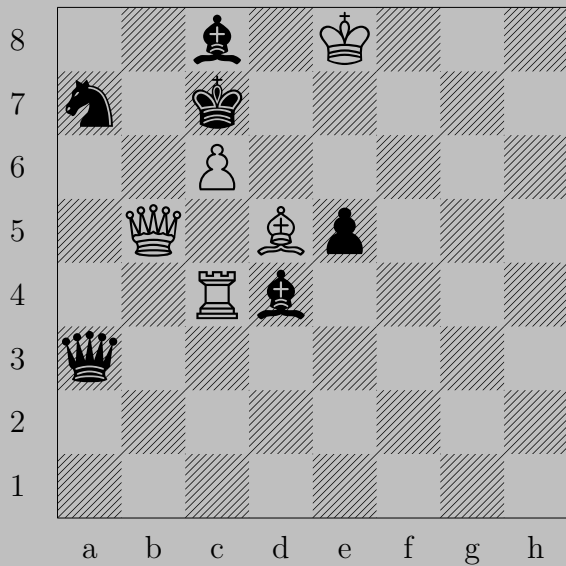


1072



♚f8+, ♗xf8  
♞c7

1073

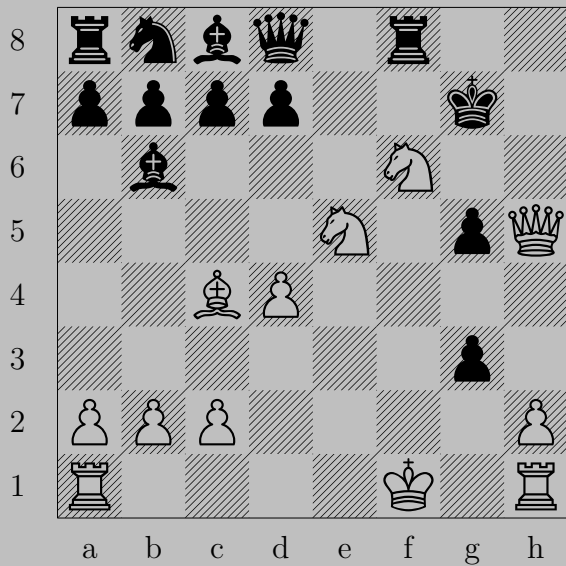


1073



♔b8+, ♚x♔b8  
♙c7

1074



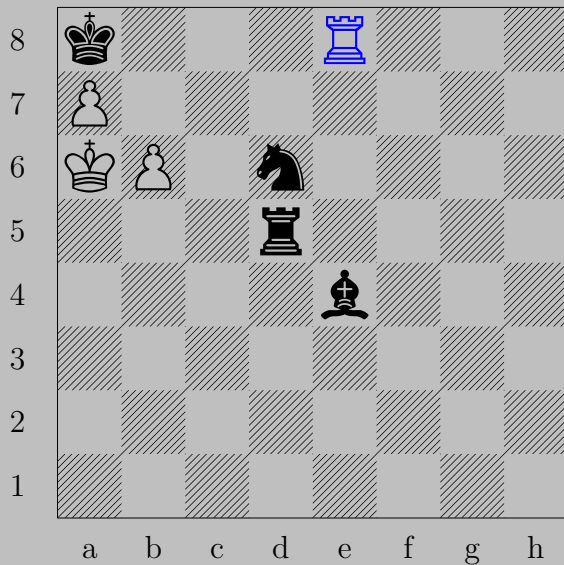
1074



♚xg5+, ♙h8  
♙xg3



1075

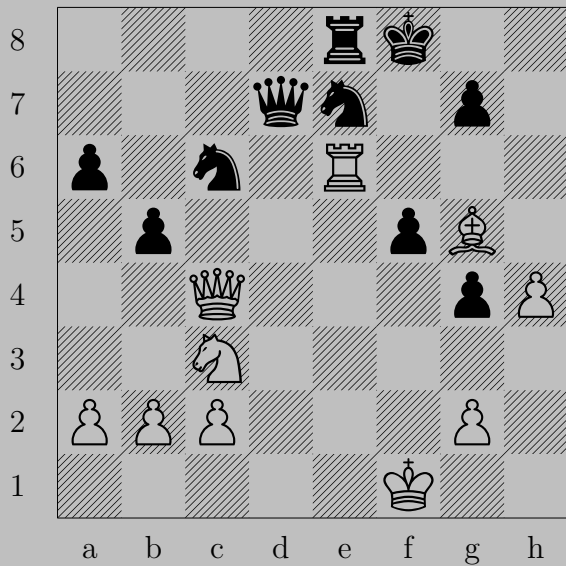


♖e8+

If ♜×e8, ♘b7. If ♜c8, ♖×c8.



1076



1076



$\text{Rf6+}$ ,  $\text{Px f6}$   
 $\text{Kh6}$

1077



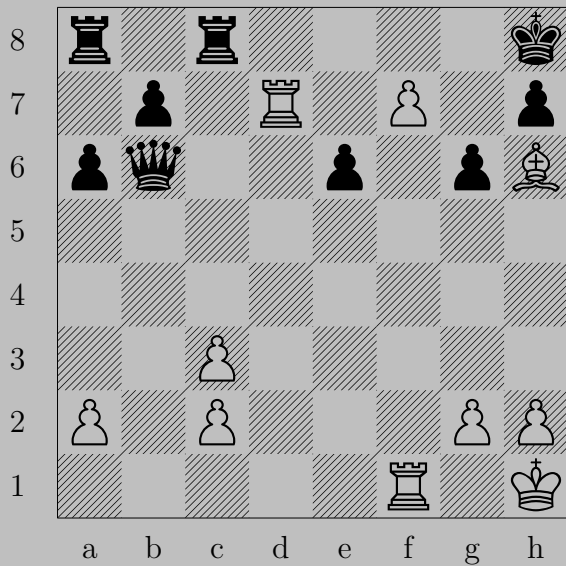
Modified

1077

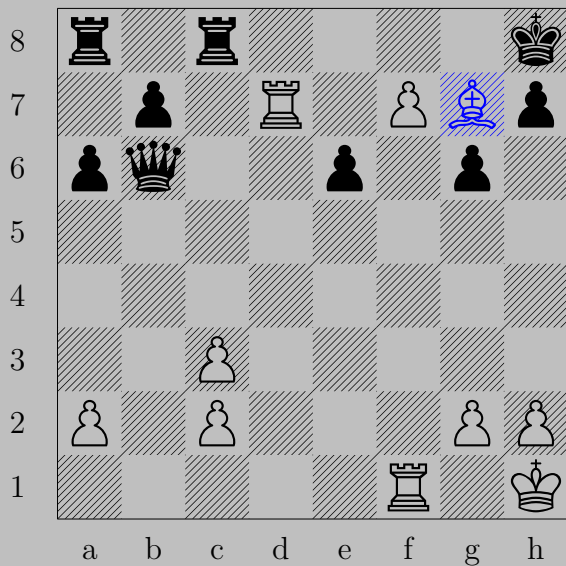


♘e8+, ♔xe8  
♔f7

1078

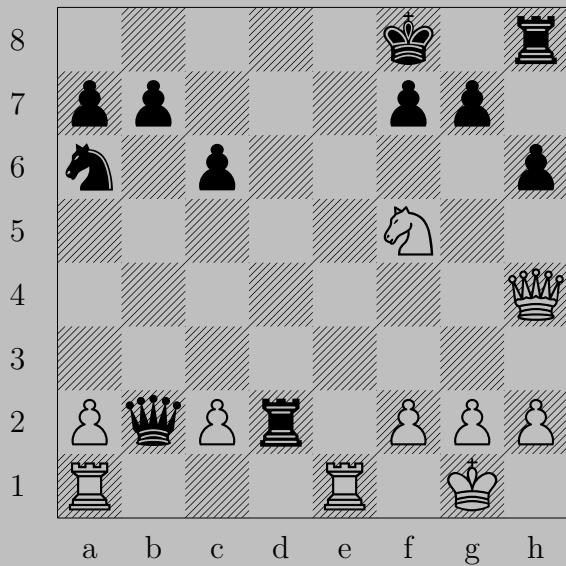


1078

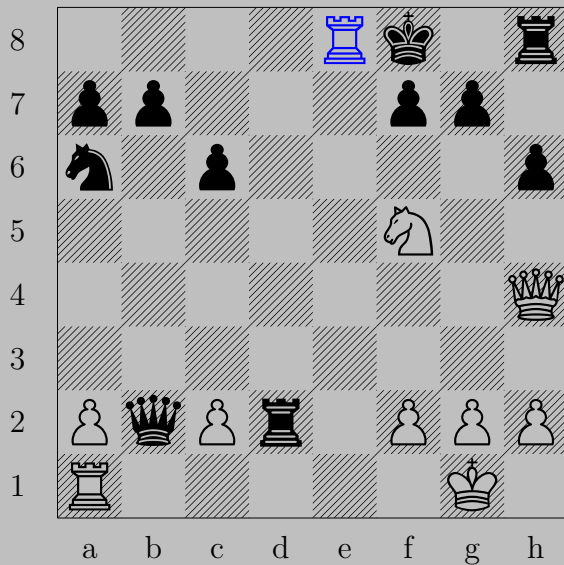


♘g7+, ♔×g7  
♙f8(♔)

1079

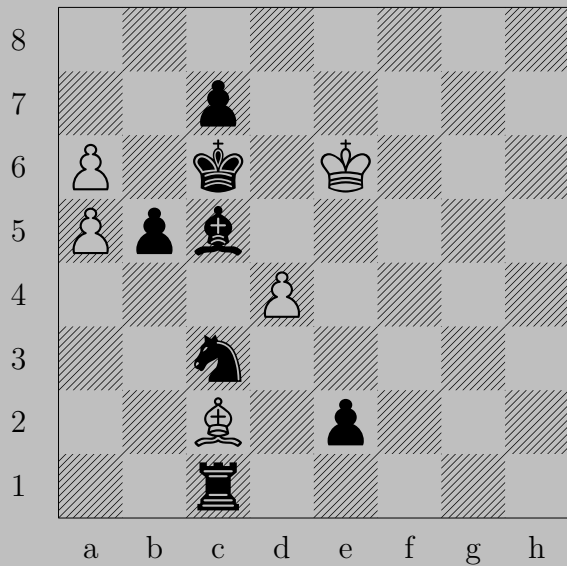


1079

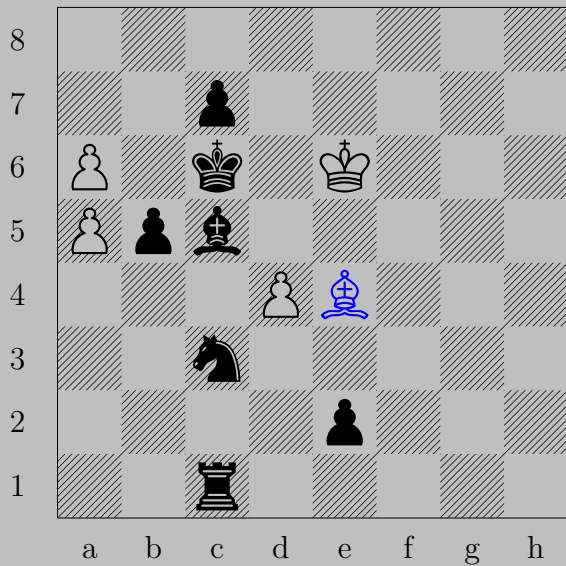


R<sub>8</sub>e8+, K<sub>8</sub>f8  
Q<sub>7</sub>e7

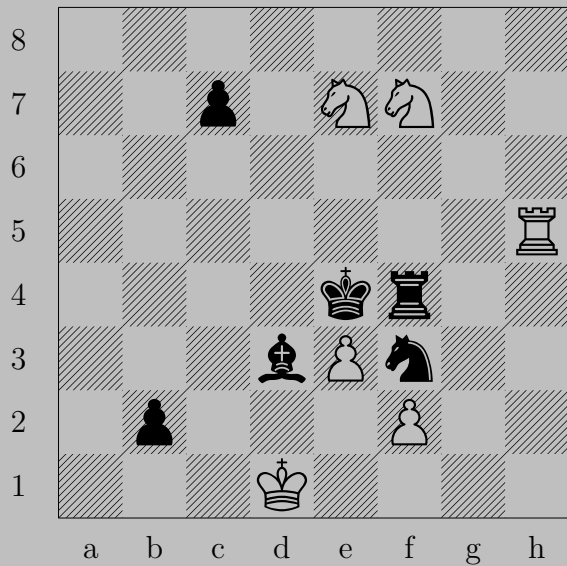




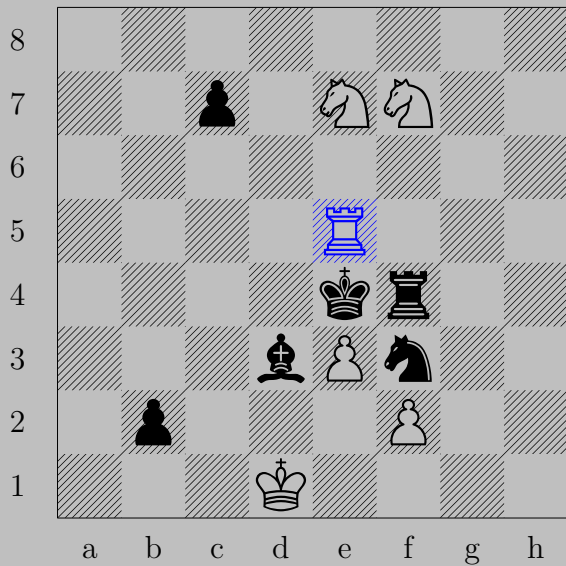
1080



♔e4+, ♞xe4  
♙d5

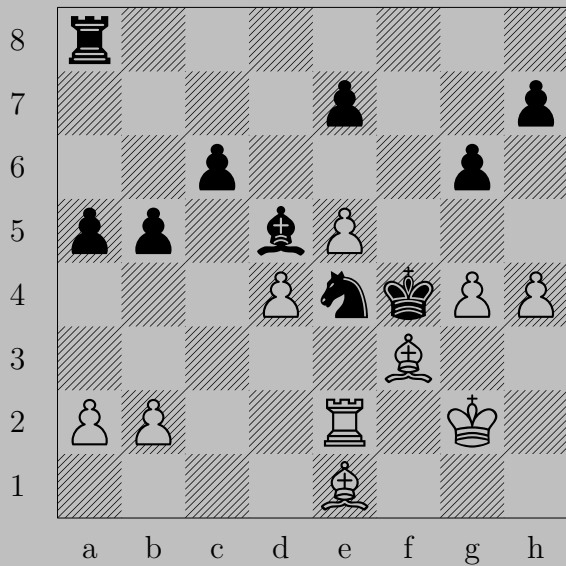


1081

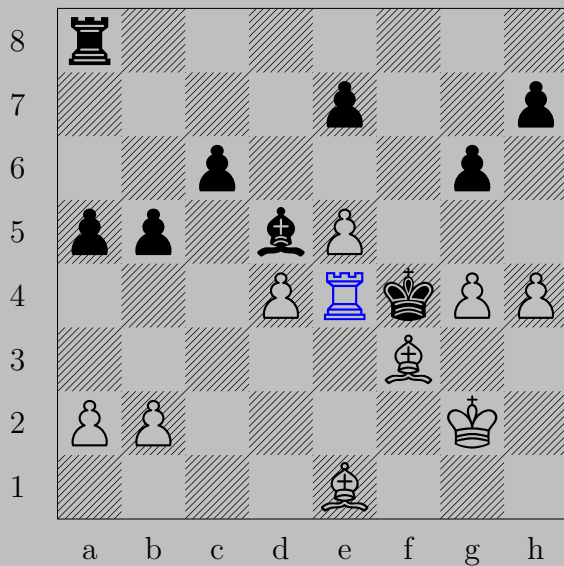


$\text{R}e5+, \text{N}xe5$   
 $\text{Ng5}$

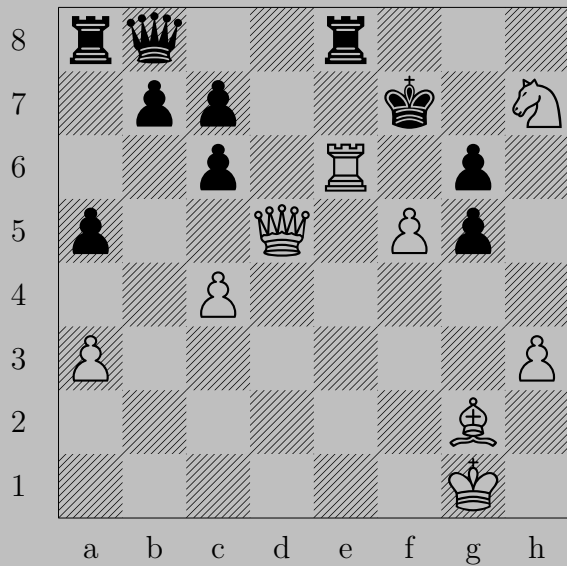
1082



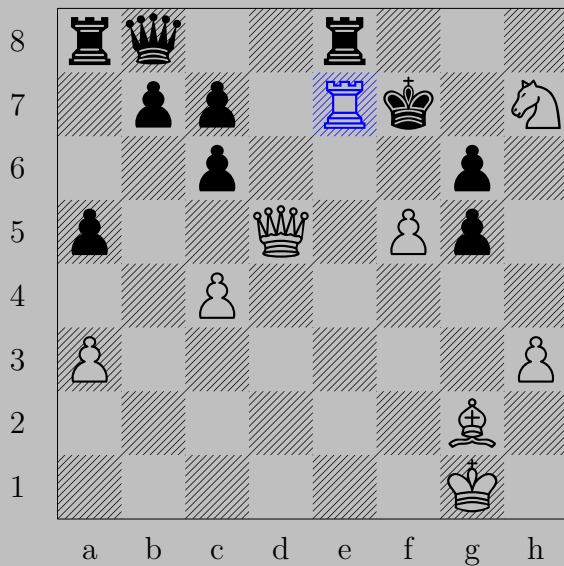
1082



$\text{♖xe4+}$ ,  $\text{♔xe4}$   
 $\text{♔d2}$

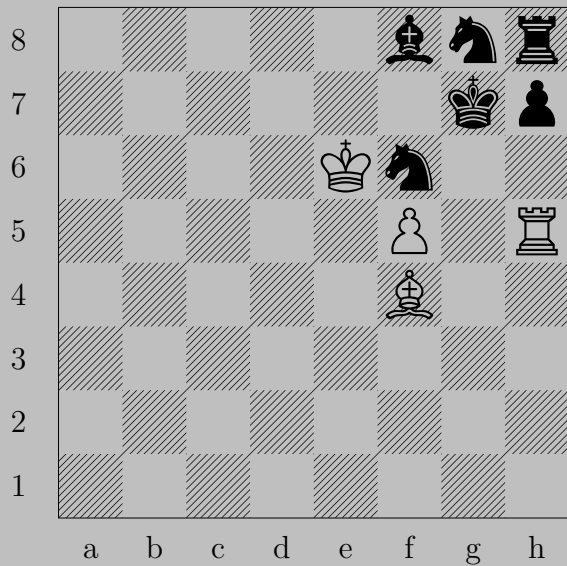


1083

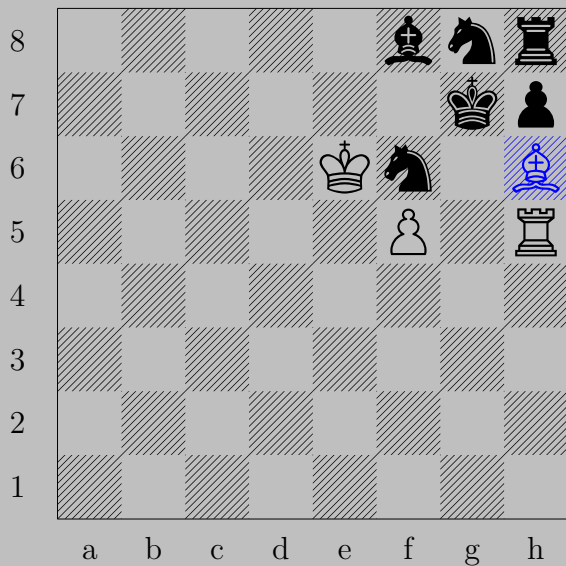


$\text{R}e7+, \text{K}xe7$   
 $\text{P}f6$



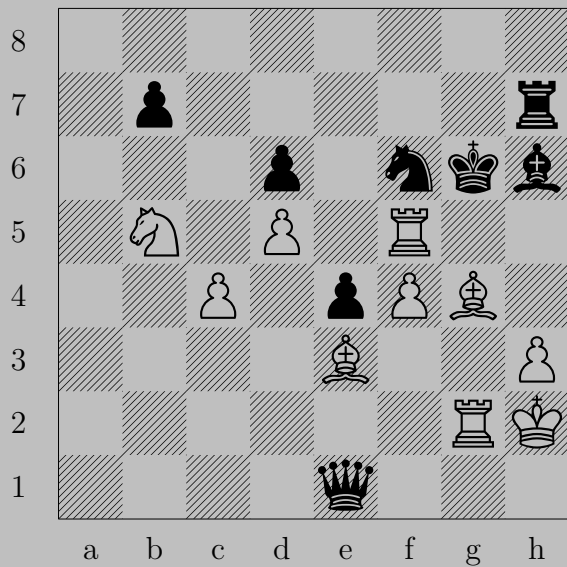


1084

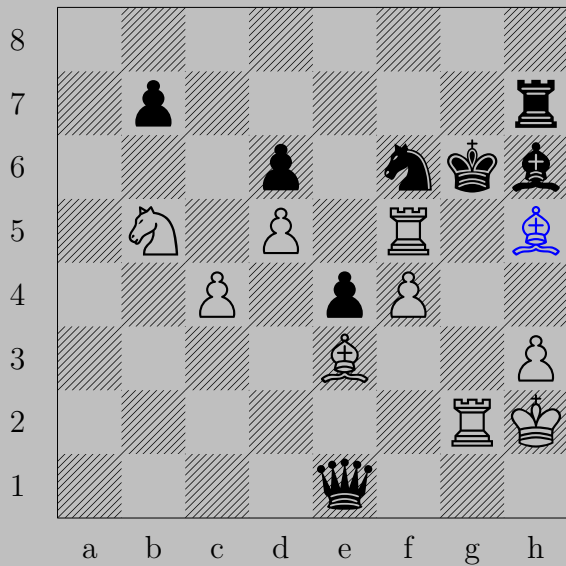


♙h6+, ♘xh6  
♖g5

1085

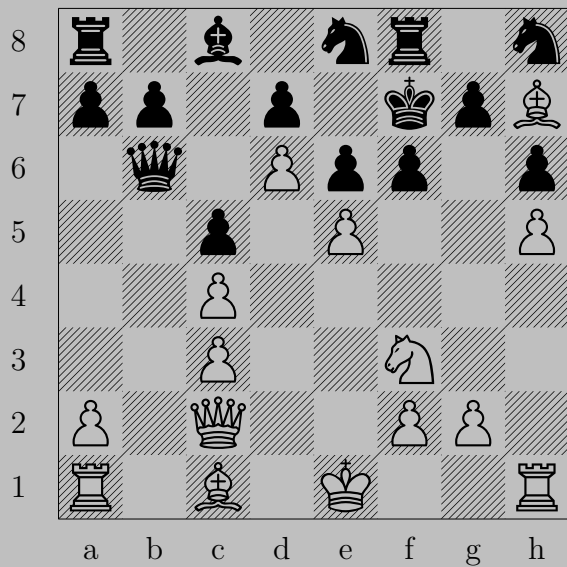


1085



♞h5+, ♔xf5

♞g6



1086



♚g6+, ♞xg6  
♙xg6



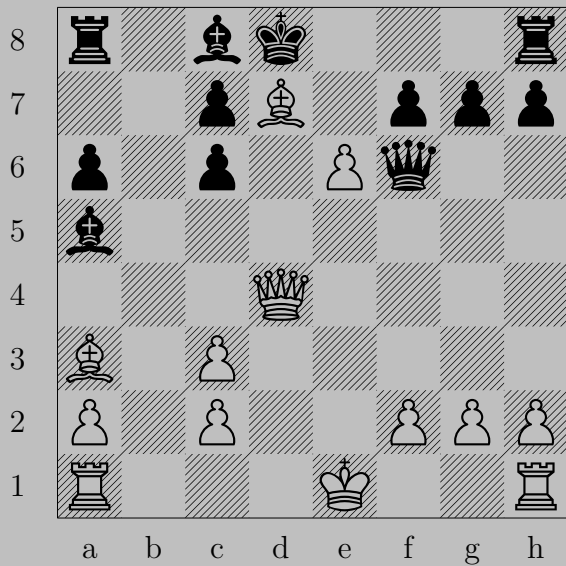
1087



♚xh7+, ♔xh7  
♖h4



1088

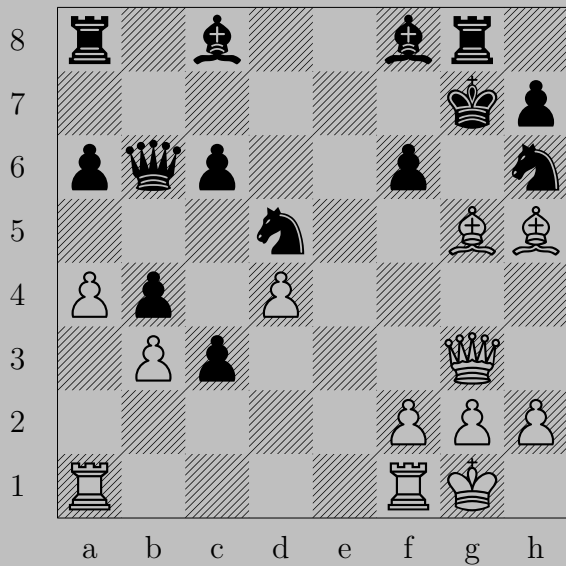




♘c6+

If ♙xd4, ♖e7. If ♘d7, ♙xd7.

1089

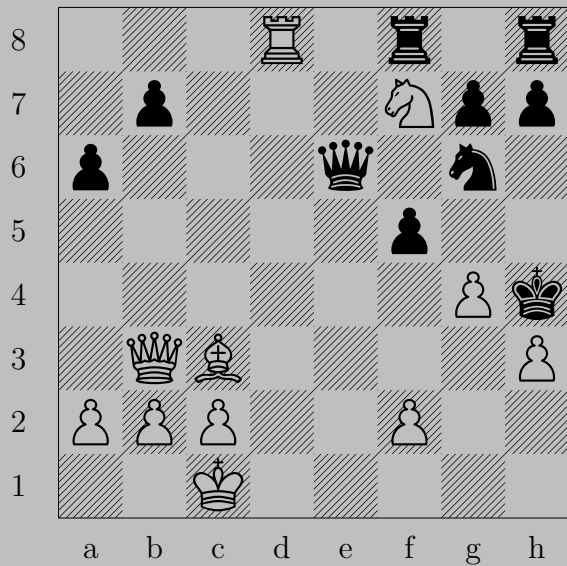


1089

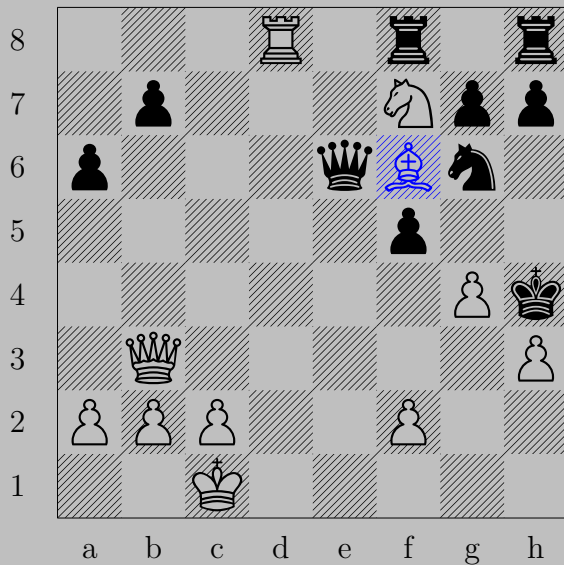


♖×f6+, ♔×f6  
♕e5

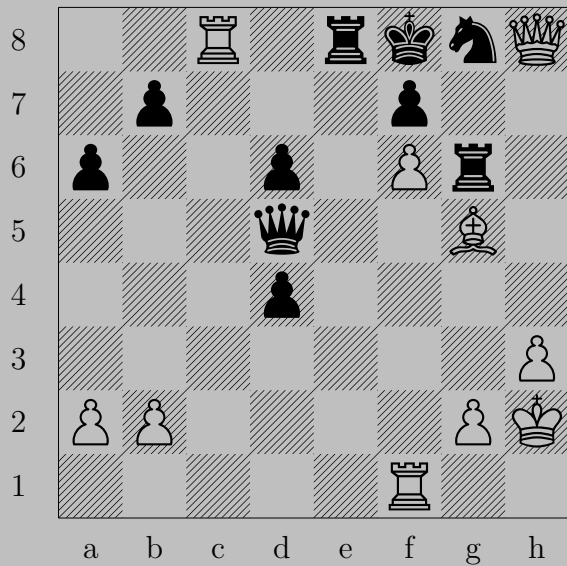
1090



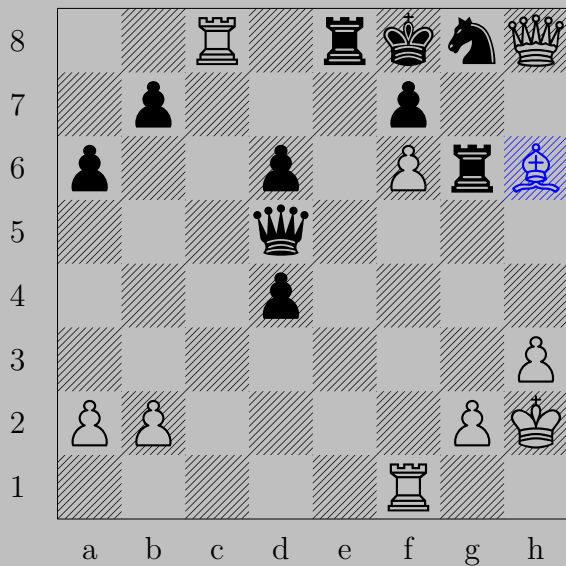
1090



$\text{♞f6+}$ ,  $\text{♚xf6}$  or  $\text{♜xf6}$   
 $\text{♚g3}$



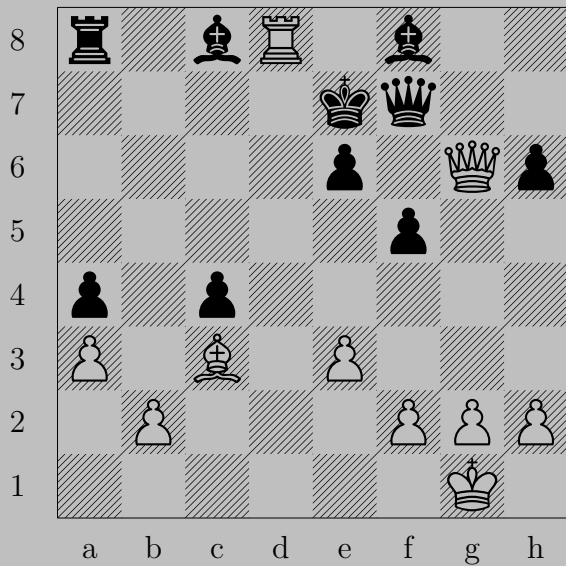
1091



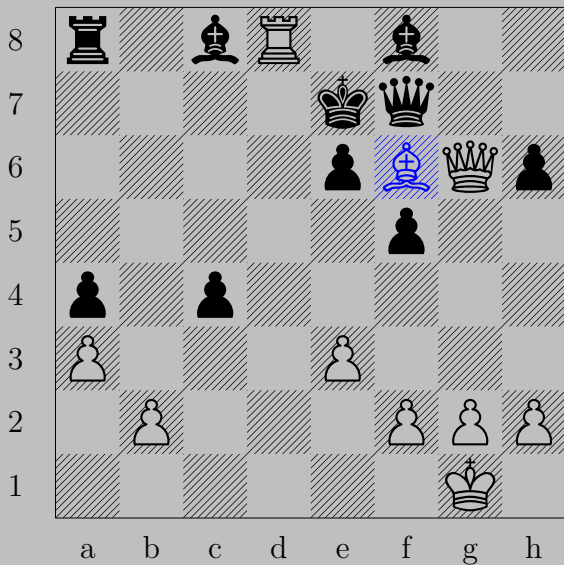
♔h6+, ♖xh6

♕g7

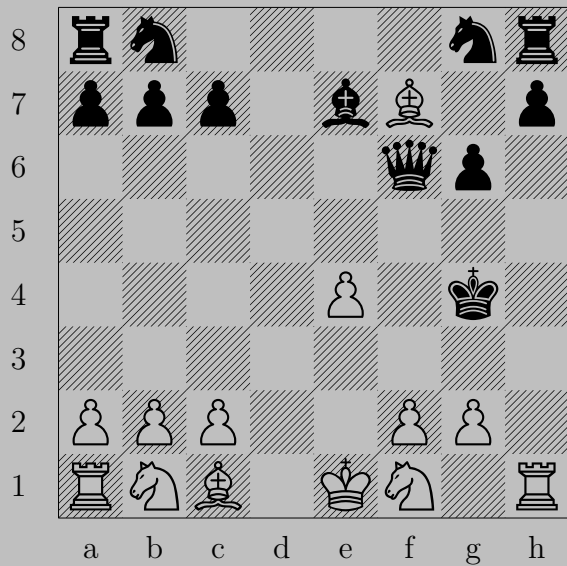




1092



♖f6+, ♔xf6  
♔e8



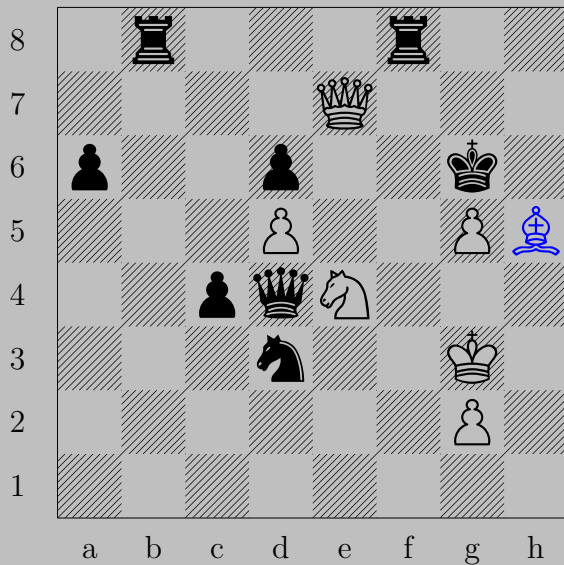
1093



♗e6+, ♔xe6

♙f3



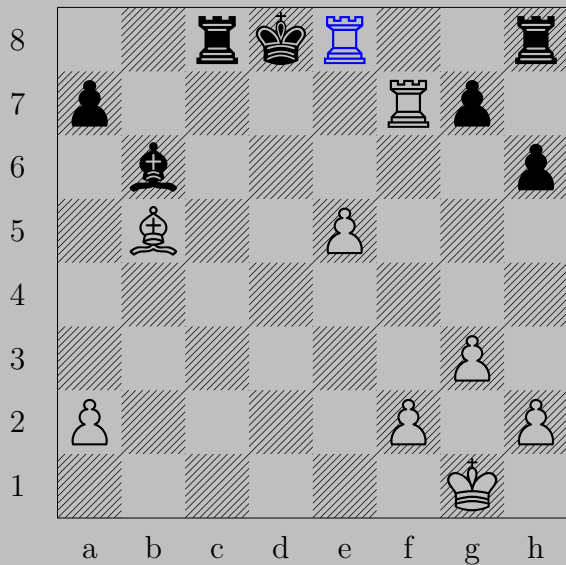


$\text{♞} \times h5+$

If  $\text{♞} \times h5$ ,  $\text{♚} h7$ . If  $\text{♞} f5$ ,  $\text{♚} e6$ .



1095



Rd8+, Rxe8  
Rd7





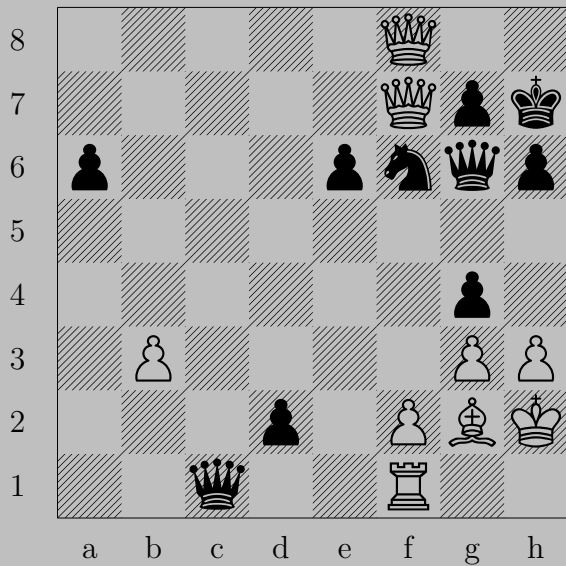
1096

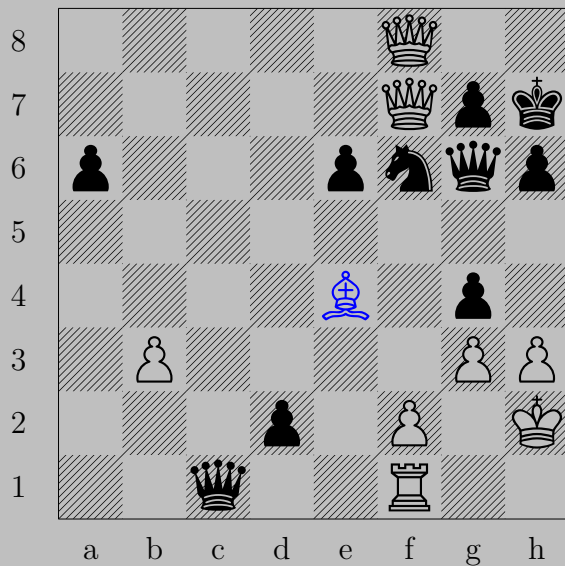


♞h7, ♔xh7 or ♔f7

♙g8(♔)

1097





$\text{♗e4}$

If  $\text{♕xe4}$  or  $\text{♕f5}$ ,  $\text{♕xg7}$ . If  $\text{♞xe4}$ ,  $\text{♕g8}$ .

Otherwise,  $\text{♕xg6}$ .

1098



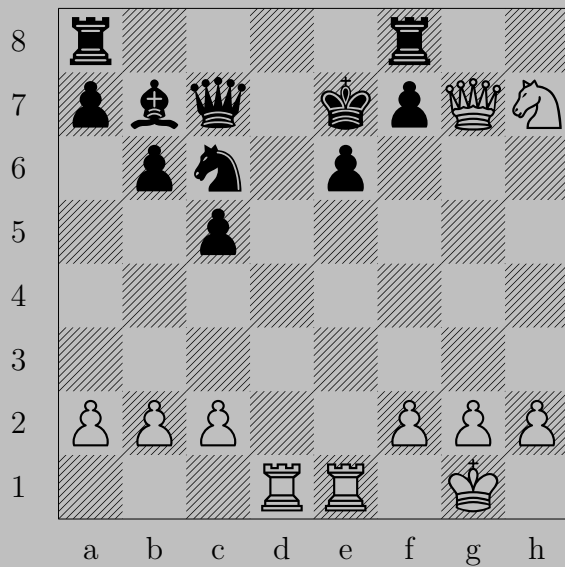
1098



$\text{♞h6+}$

If  $\text{♜xh6}$ ,  $\text{♞g5}$ . If  $\text{♜g8}$  or  $\text{♜h8}$ ,  $\text{♞xf8}$ .

1099



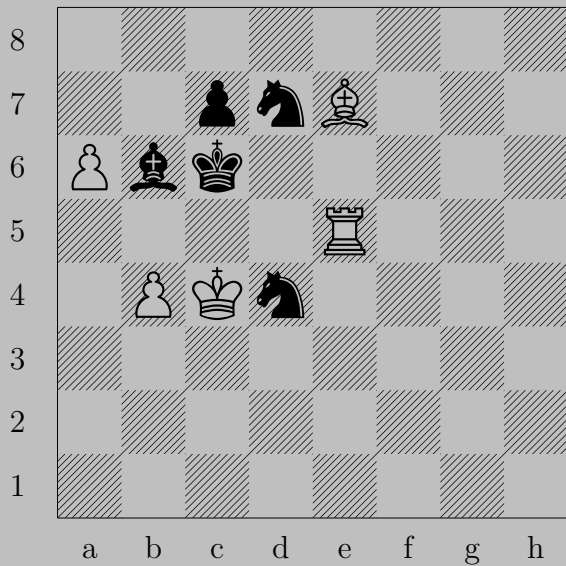
1099



Rook×e6+, King×e6  
Queenf6



1100



1100



♙b5+, ♞x b5  
♖e6